

ACCOMMODATIONS SYMBOL LEGEND

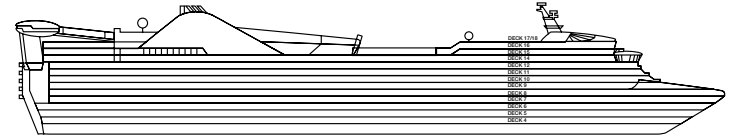
- \* Twin Beds do not convert to a King Bed
- ▶ King Bed does not convert to Twin Beds
- ★ 2 Twin Beds (convert to King) and Single Sofa Bed
- 2 Twin Beds (convert to King) and 1 Upper Pullman
- ✱ 2 Twin Beds (convert to King) and 1 Upper Pullman (Beds do not convert to King when Pullman in use)
- 2 Twin Beds (convert to King), Single Sofa Bed and 1 Upper Pullman
- † 2 Twin Beds (convert to King) and Double Sofa Bed

- ≡ 2 Twin Beds (convert to King), Single Sofa Bed with Convertible Bunk
  - ◀ King Bed (does not convert to Twin Beds) and Double Sofa Bed
  - ✳ 2 Twin Beds (convert to King) and 2 Upper Pullmans (Beds do not convert to King when Pullmans in use)
  - ▶▶ 2 Twin Beds (does not convert to King) and 2 Upper Pullmans
  - ◀ Connecting staterooms (ideal for families and groups of friends)
  - Ⓜ All accommodations are non-smoking.
- Stateroom features and layouts may vary. Deck plan is subject to change.

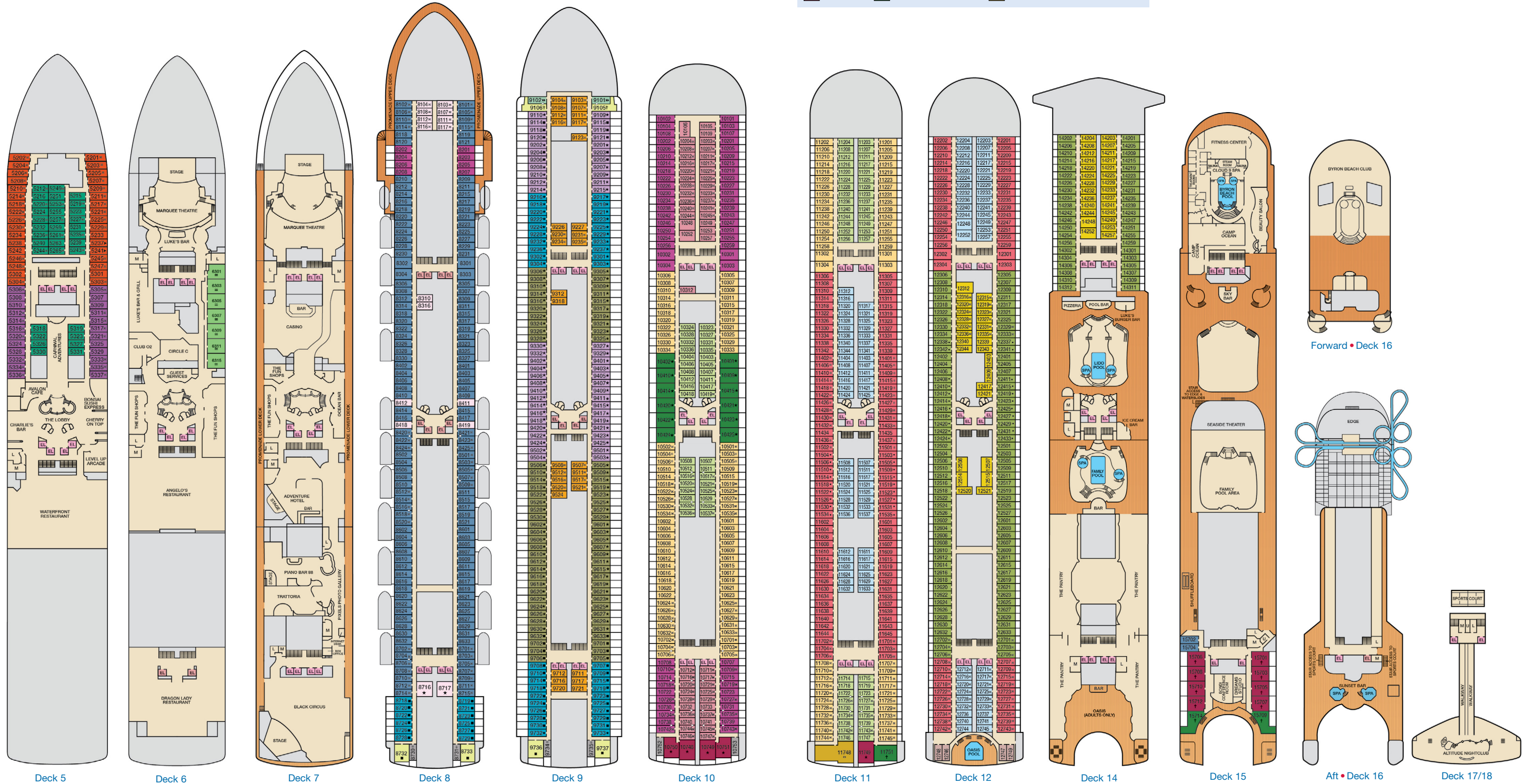
Accessible staterooms are available for guests with disabilities. For details, please contact: **For US guests:** Call Guest Access Services at 1-800-438-6744 ext. 70025, or visit <https://www.carnival.com/about-carnival/special-needs>  
**For Australia and New Zealand guests:** Call the Carnival Reservations Department, Guest Services: Australia 13 31 94; New Zealand 0800 442 095.

CATEGORIES

- PT Porthole
  - 4A 4B 4C 4D 4E 4F 4G 4H Interior
  - 5A Ocean View (obstructed views)
  - 6A 6B Ocean View
  - 8A 8B 8C 8D Balcony
  - 8M Aft-View Extended Balcony
  - OS 01 Ocean Suite
  - 6B Grand Suite
  - EB Extended Balcony Suite
  - SB Presidential Suite
- Byron Beach Accommodations: BV Ocean View Suite BY Ocean Suite VB Vista Suite



Gross Tonnage: 108,865 Length: 951 Feet Beam: 118 Feet  
 Cruising Speed: 20 Knots Guest Capacity: 2,636 (Double Occupancy)  
 Total Staff: 1,100 Registry: The Bahamas



# CARNIVAL ADVENTURE.

## ACCOMMODATIONS SYMBOL LEGEND

- \* Twin Beds do not convert to a King Bed
- ▲ King Bed does not convert to Twin Beds
- ▲ 2 Twin Beds (convert to King) and Single Sofa Bed
- 2 Twin Beds (convert to King) and 1 Upper Pullman
- ※ 2 Twin Beds (convert to King) and 1 Upper Pullman (Beds do not convert to King when Pullmans in use)
- 2 Twin Beds (convert to King), Single Sofa Bed and 1 Upper Pullman
- † 2 Twin Beds (convert to King) and Double Sofa Bed

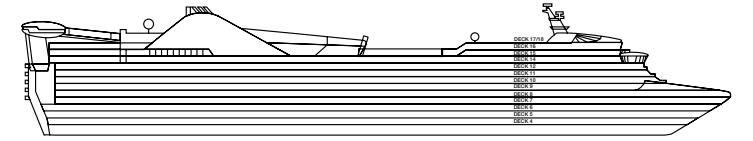
- ≡ 2 Twin Beds (convert to King), Single Sofa Bed with Convertible Bunk
- ↔ King Bed (does not convert to Twin Beds) and Double Sofa Bed
- ※ 2 Twin Beds (convert to King) and 2 Upper Pullmans (Beds do not convert to King when Pullmans in use)
- ▲ 2 Twin Beds (does not convert to King) and 2 Upper Pullmans
- ▷ Connecting staterooms (ideal for families and groups of friends)
- 🚭 All accommodations are non-smoking.

- Accessible Routes including Ramps
- Restrooms, Elevators, Lifts and other Accessible Areas
- Fully Accessible Staterooms (FAC)
- Fully Accessible Staterooms - Single Side Approach (FAC-SSA)
- Ambulatory Accessible Staterooms (AAC)

Stateroom features and layouts may vary. Deck plans subject to change.

## DECK PLANS

For specific ship accessibility features, please contact:  
**For US guests:** Call Guest Access Services at 1-800-438-6744 ext. 70025, or visit <https://www.carnival.com/about-carnival/special-needs>  
**For Australia and New Zealand guests:** Call the Carnival Reservations Department, Guest Services: Australia 13 31 94; New Zealand 0800 442 095.



Gross Tonnage: 108,865 Length: 951 Feet Beam: 118 Feet  
 Cruising Speed: 20 Knots Guest Capacity: 2,636 (Double Occupancy)  
 Total Staff: 1,100 Registry: The Bahamas

