

märklín

AC/DC[®]

ROCK N ROLL TRAIN





GET IT ON, GET IT UP, COM

A dark, close-up photograph of a train engine, likely a diesel locomotive, with the text "E ON GIVE IT ALL YOU GOT" overlaid in a bold, yellow, sans-serif font. The background is a dark, textured surface, possibly the side of the engine, with some mechanical details visible. The text is centered horizontally and spans most of the width of the image.

E ON GIVE IT ALL YOU GOT



© 2025 Leidseplein Presse B.V. Under License to Perryscope Productions LLC



BLACK ICE LOCOMOTIVE

39966 € 599,00 *

Passionate AC/DC fans will not forget the year 2008 too soon! They had to wait eight years for new material until in August the single ROCK N ROLL TRAIN hit like a comet. Shortly followed in October with the long-awaited album BLACK ICE – a true milestone in hard rock history.



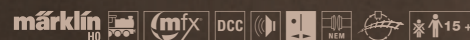
The oversized locomotive in the stage design of AC/DC's BLACK ICE live shows

The cover was originally supposed to show a train wreck, but Angus and Malcolm Young changed their minds. Instead, the railway motif was developed into the spectacular stage setting for the BLACK ICE tour.

At around 160 concerts in 20 months, a gigantic steam engine with devil horns thrilled the fans and became one of the most striking stage elements of the band's history. Accompanied by pyrotechnics and steam, it emphasized the raw power and unstoppable dynamics of AC/DC's sound. The locomotive became a symbol for the attitude to life of Rock'n'Roll - powerful, unstoppable and always on the move.

It is precisely this driving energy that connects AC/DC and Märklin! Märklin presents the impressive and iconic stage locomotive as a fully functional collector's item. Naturally with the legendary horns and, in the spirit of AC/DC, made of heavy metal. For those about to play – we salute you!

These covers make the hearts of all AC/DC fans beat faster immediately: the album BLACK ICE and the single ROCK N ROLL TRAIN.



Modell: The locomotive and tender are constructed mostly of metal. Equipped with extensive light and sound functions, the locomotive also has a smoke insert for dynamic smoke emission, a headlamp that can be switched to red, a cowcatcher and illuminated devil's horns. The locomotive is aged by hand and finished with the AC/DC logo of the tour.

This model is also available for direct current operation. You find it in the Trix H0 assortment under item number: 25492

TRIX

⚡ Many applied details of the famous AC/DC stage locomotive

⚡ AC/DC typical devil horns, can be switched on and off digitally

⚡ The used look of the stage locomotive is achieved by ageing the model by hand.

⚡ Being handmade makes each model locomotive unique.

⚡ Smoke insert with speed-dependent, dynamic smoke emission

⚡ Driver's cab and tender passage lighting digitally switchable

⚡ With mfx+ digital play world decoder and extensive light and sound functions

⚡ Buffer height on locomotive and tender according to NEM standards

The BLACK ICE locomotive from Märklin: only authentic with the devil's horns

Dynamic smoke output

Headlight can be switched to red

Cowcatcher as on the stage locomotive



ca. 24,5 cm

AC/DC





HELLS BELLS CAR

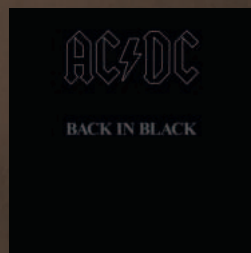
46270 € 79,99 *

Four chimes that not only give AC/DC fans immediately goose bumps! The year 1980 heralded drastic changes for the Australian hard rockers. The charismatic frontman Bon Scott died unexpectedly, and after intense mourning, the band leaders Angus and Malcolm Young hired the Brit Brian Johnson as the new singer.



A ritual for real rock fans: HELLS BELLS live – a truly unforgettable experience

In the same year, two more milestones in music history were published: the album BACK IN BLACK and the single HELLS BELLS. After the recordings in a bell tower didn't work due to disturbing background noises, the band – without further ado – had the legendary bell with the AC/DC logo casted. HELLS BELLS is undoubtedly one of the greatest rock songs of all time and the hypnotic bell intro is a must at every AC/DC concert. Märklin is bringing the model of the cult bell on a metal stake car onto the model railroad tracks.



BACK IN BLACK – an album for eternity



märklin H0

The car is constructed of a combination of metal and plastic. The car floor is equipped with air tanks and brake lines. The car body has brake wheels and grab rails handlebars and plug-in stanchions. The car is loaded with a miniature of the AC/DC HELLS BELLS bell made of brass. With the separately available interchangeable wheel sets E700580 the car can be converted to the Trix H0 DC system.

⚡ The miniature of the AC/DC HELLS BELLS bell is made of brass.

⚡ Matching loading frame to secure the bell on the car

⚡ The used look of this AC/DC wagon is achieved by ageing the model by hand.

⚡ Being handmade makes each wagon unique.

⚡ Freight wagon to go with the BLACK ICE steam locomotive

The iconic bell is secured with a specially designed frame.



ca. 15 cm



FOR THOSE ABOUT TO ROCK CAR

46930 € 79,99 *

In 1981, the Australian cult rockers elevated a cannon to an irreplaceable stage element in the AC/DC cosmos. In the title track of the album FOR THOSE ABOUT TO ROCK, the band honors all hard rock fans with gun salutes. Legend has it that AC/DC were inspired to use salutes by the British royal family of all people. The band were in the studio working on their new album while the wedding of Prince Charles and Lady Diana was being broadcast on television.



Pure energy and the spectacle that AC/DC concerts are all about. The legendary cannons, the unforgettable sound: this is where hard rock is at home.

AC/DC thought the cannons fired there were so cool that they initially used them as an effect for the song and later as a show element for their concerts. Since then, numerous concerts have started with the chimes of the song HELLS BELLS and ended with the dignified salute shots. It goes without saying that the Märklin model also features cannons. A stake wagon made of metal transports the cult objects from performance to performance. For those about to play – we salute you!



The cannons are thundering! For those who want to rock ... and that of course everybody wants at an AC/DC live show!



märklin
H0

The car is constructed of a combination of metal and plastic. The car floor is equipped with air tanks and brake lines. The car body has brake wheels and grab rails handlebars and plug-in stanchions. The car is loaded with two miniatures of the famous AC/DC cannons made of brass. With the separately available interchangeable wheel sets E700580 the car can be converted to the Trix H0 DC system.

⚡ The miniatures of the AC/DC cannons are made of brass.

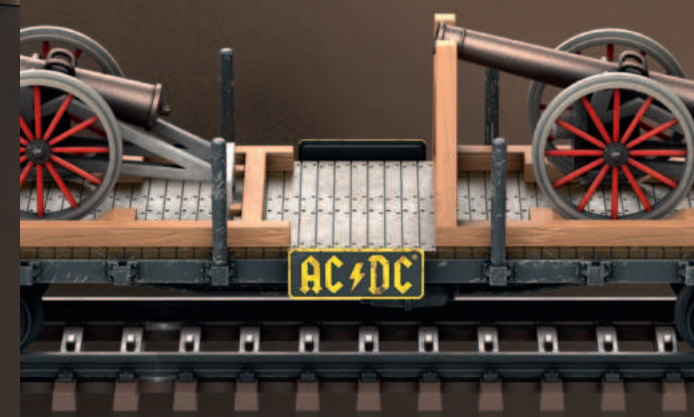
⚡ Matching loading racks to secure the cannons on the wagon

⚡ The used look of this AC/DC wagon is achieved by ageing the model by hand.

⚡ Being handmade makes each wagon unique.

⚡ Freight wagon to go with the BLACK ICE steam locomotive

These cannons give true AC/DC fans goose bumps.



STIFF UPPER LIP CAR

48837 € 79,99 *

Angus Young is one of the greatest guitarists of all time. He founded the legendary rock band AC/DC with his brother Malcolm in 1973 and is until today the only member who has been with the band without interruption since the beginning. In the studio he sets the tone for all productions, on stage he became world famous for his wild and energetic performances in a typical British school uniform. The band paid a long overdue tribute to him in 2000 with the release of the album STIFF UPPER LIP.



The unbridled power and passion of Angus Young as he shakes the stage with his legendary guitar riffs and duckwalk.

The cover shows the bronze statue of Angus Young in his typical stage pose with the legendary Gibson guitar. In a clip for the STIFF UPPER LIP world tour, the animated, oversized Angus statue first visits various cities around the world. During the year-long tour, the 15-metre-high Angus statue formed the stage set for the shows. During the performances, it emitted smoke and fire. The Angus statue is of course also a must on the ROCK N ROLL TRAIN from Märklin. Carefully transported on a stake car made of metal.

STIFF UPPER LIP – devilishly good. With the iconic statue of Angus Young, the spirit of Rock'n'Roll is immortalized on an album cover and the stage.



märklin H0

The car is constructed of a combination of metal and plastic. The car floor is equipped with air tanks and brake lines. The car body has brake wheels and grab rails handlebars and plug-in stanchions. The car is loaded with a miniature of the famous AC/DC statue. With the separately available interchangeable wheel sets E700580 the car can be converted to the Trix H0 DC system.

⚡ The miniature of the iconic AC/DC statue is made of brass.

⚡ Matching loading frame to secure the statue on the car

⚡ The used look of this AC/DC wagon is achieved by ageing the model by hand.

⚡ Being handmade makes each wagon unique.

⚡ Freight wagon to go with the BLACK ICE steam locomotive

Well secured on the way
to the next concert



ca. 15 cm



ROCK N ROLL TRAIN

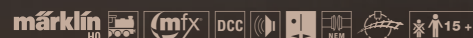


BLACK ICE LOCOMOTIVE

39966 € 599,00 *

DIGITAL FUNCTIONS	6021	60652	60653	60215	CS 3	6021	60652	60653	60215	CS 3
Peak signal										
Smoke insert										
Steam locomotive running noise										
Locomotive whistle										
Direct control										
Brake squeal off										
Firebox flare										
Lighting devil's horns										
Switching headlight red										
Light function										
Driver's cab lighting										
Shunting whistle										
Shunting gear										
Interior passage lighting										
Brake squeal off (mfx+)										
Steam release										
Special sound function 1										
Special sound function 2										
Special sound function 3										
Special sound function 4										
Shoveling coal & firebox										
Water pump										
Injector										
Air pump										
Refill water										
Refill coal										
Refill sand										
Close tender door										

Prototype: the steam locomotive with tender from the stage set of the AC/DC BLACK ICE World Tour 2008 until 2010.



This model is also available for direct current operation. You find it in the Trix H0 assortment under item number: 25492

TRIX

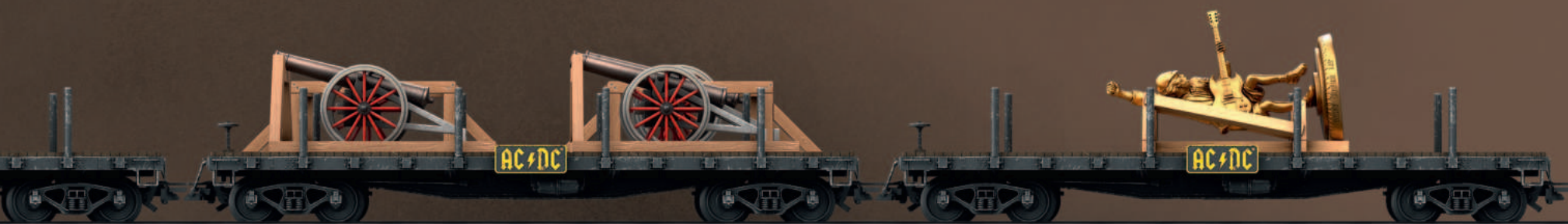


HELLS BELLS CAR

46270 € 79,99 *

Prototype: A four-axle flat car of American design. Used to transport the iconic AC/DC HELLS BELLS bell.





FOR THOSE ABOUT TO ROCK CAR

46930 € 79,99 *

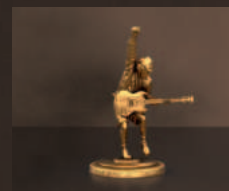
Prototype: A four-axle flat car of American design.
Used to transport two of the famous AC/DC cannons.



STIFF UPPER LIP CAR

48837 € 79,99 *

Prototype: A four-axle flat car of American design.
Used to transport the legendary statue.



FOR THOSE ABOUT TO PLAY



MÄRKLIN DIGITAL START SET

29000 € 199,00 *

If you want to bring the BLACK ICE locomotive to life in terms of play, the Digital Start Set is the ideal way to get started. The locomotive can be rocked across the track oval with the wireless Mobile Station. Horns in stage mode, switch on steam, activate sounds – all at the touch of a button!



- ⚡ 12 curved tracks (24230)
- ⚡ 4 straight tracks (24188)
- ⚡ 4 straight tracks (24172)
- ⚡ Track connection box
- ⚡ Power supply unit
- ⚡ Mobile Station
- ⚡ Expandable





Gebr. Märklin & Cie. GmbH
Stuttgarter Straße 55–57
73033 Göppingen
Germany

www.maerklin.de

Service phone: +49 (0) 71 61 / 608 222
 Service e-mail: service@maerklin.de

© Copyright by Gebr. Märklin & Cie. GmbH.
 All rights reserved. Reproduction, even excerpts, prohibited.

Printed in Germany.

Subject to changes and delivery options. Prices, data and dimensions are given without guarantee. Error and printing errors excepted, liability in this respect is excluded.

Prices: * All prices are non-binding recommended retail prices, recommended retail prices. Current prices at the time of printing date of printing - subject to price changes during the year Prices valid until the publication of the next price list/ next catalog. The illustrations are partly hand samples, retouchings and renderings. Series production may differ in details from the the models shown. Märklin reserves the right to cancel an announced novelty in the event of insufficient demand.



Digital decoder with up to 32 digitally controlled functions. The quantity depends on the controller being used.



Digital decoder mfx+ (Märklin World of Operation)



Attention: adults only



Metal frame and mostly metal locomotive body



Single headlights that change over with the direction of travel



Close couplers in standard pocket with guide mechanism



Metal car frame



Built-in sound effects circuit



Buffer capacitor included



RailCom® capable



DCC decoder



Scale 1:87



Wheel exchange



Märklin is again the brand of the century. For the fourth time in succession an expert committee consisting of brand specialists has chosen Märklin as the brand of the century. As the brand of the century Märklin is represented in the globally recognized brand registry "Deutsche Standards" / "German Standards".



ISO 9001
 Zertifiziertes
 Qualitätsmanagementsystem
www.tuev-sued.de/ms-zert

Märklin fulfills the requirements for a quality management system according to the ISO 9001 Standard. This is regularly checked and certified by the TÜV Süd testing organization. You thereby have the assurance of buying a quality product of a certified firm.

