



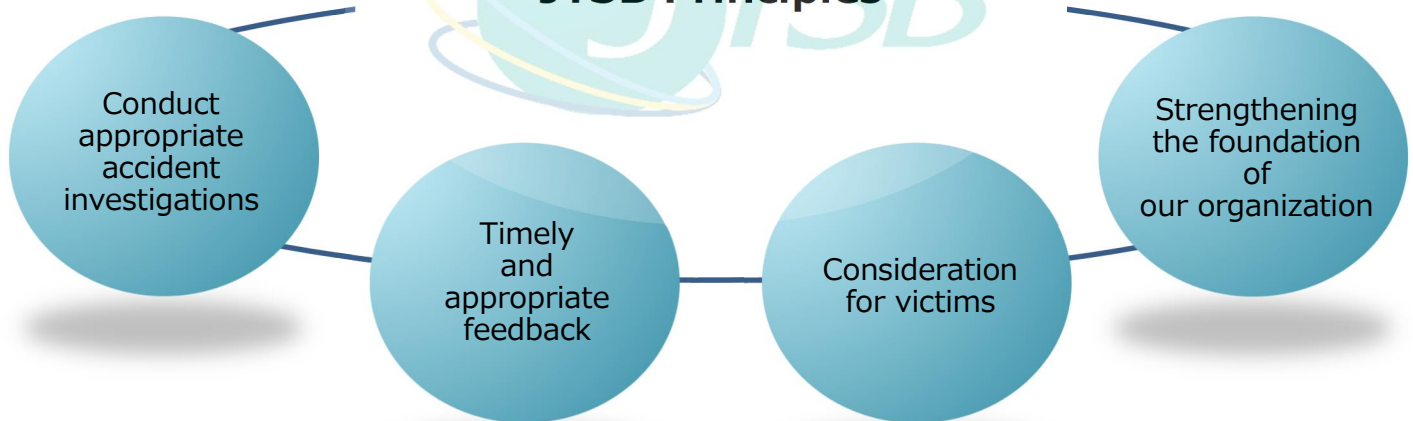
Safety investigation into the causes of aircraft, railway, and marine accidents/incidents, and the prevention of their recurrence

# JTSB Mission

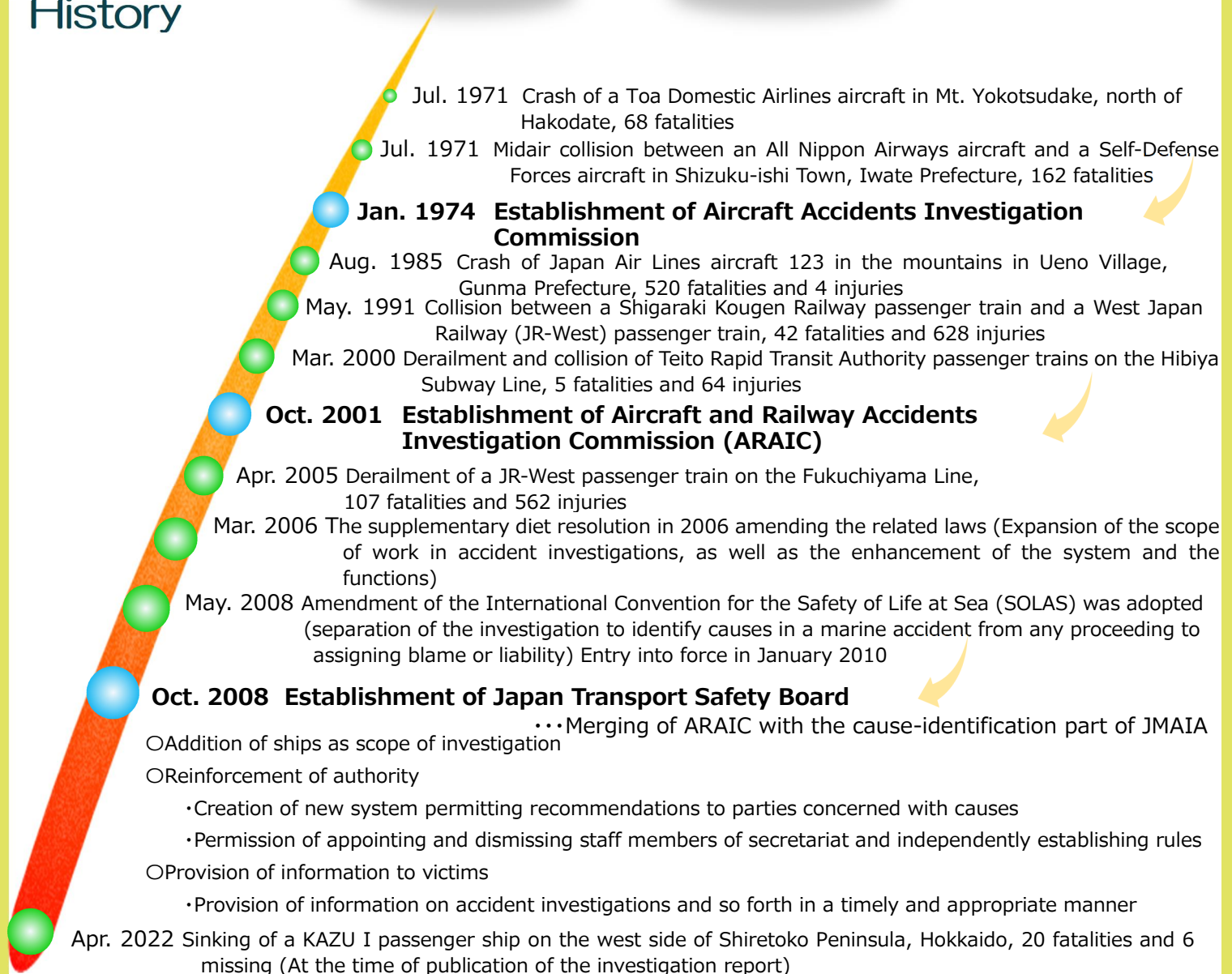
We contribute to

- preventing the occurrence of accidents and
- mitigating the damage caused by them, thus improving transport safety while raising public awareness for protecting people's lives by
- accomplishing appropriate accident investigations that thoroughly unveil the causes of accidents and damages incidental to them, and
- urging the implementation of necessary policies and measures through the issuance of safety recommendations, opinions, and provision of safety information.

## JTSB Principles



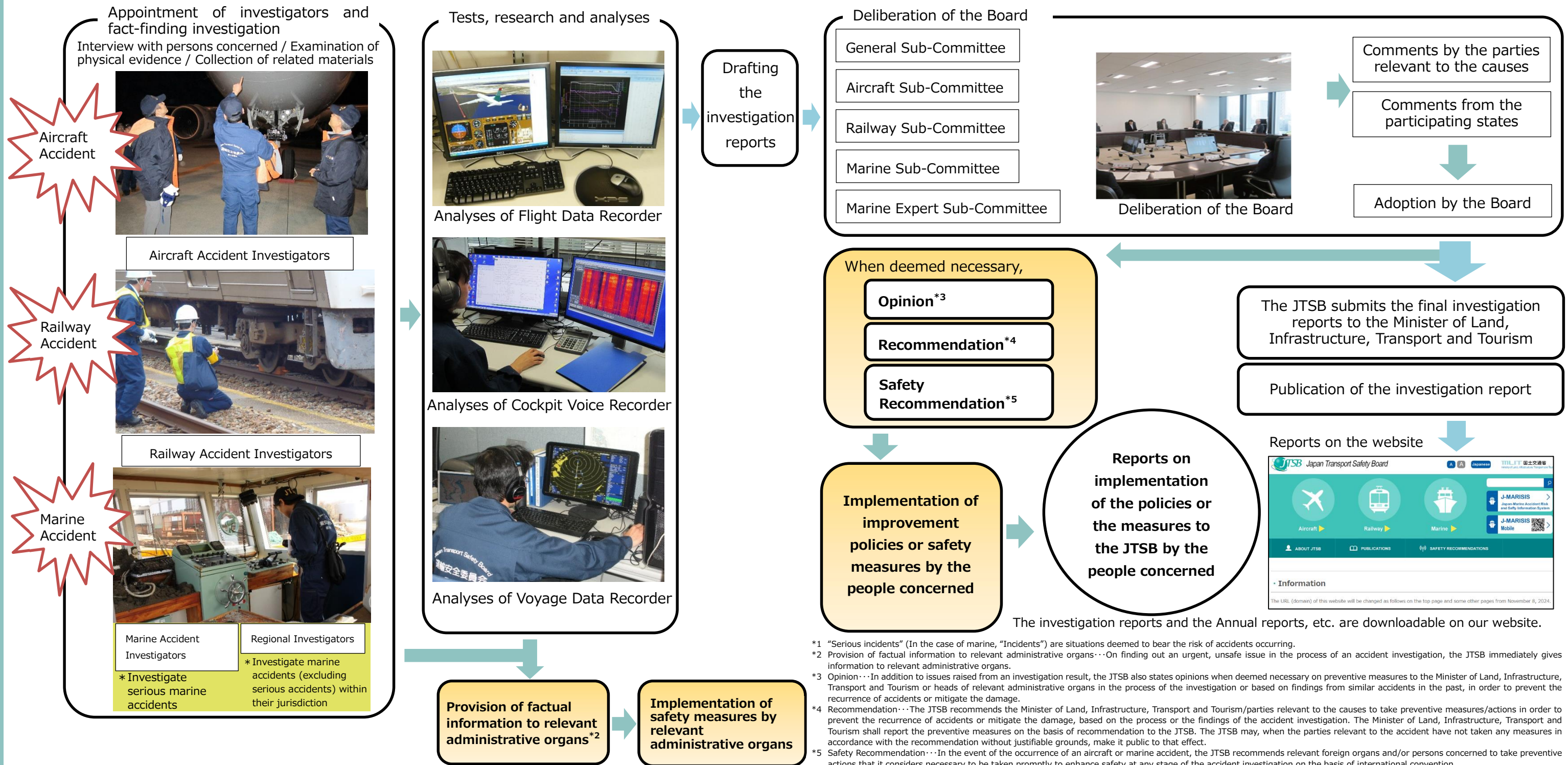
## History





# Investigation Procedure

The JTSB investigates to determine the causes of aircraft, railway, and marine accidents/serious incidents<sup>\*1</sup> and the damage caused by them. Based on the process or findings of the investigations, the JTSB issues recommendations or opinions to heads of administrative organs or parties relevant to the causes concerning the measures to prevent the recurrence of accidents and to mitigate damage caused by them. Investigations by the JTSB do not seek to assign blame or liability.



## Dissemination of Information

### JTSB Digests/Annual Reports, etc.

With the aim of fostering awareness of safety, and preventing similar accidents from occurring, we issue "JTSB Digests," "Annual Reports," "Regional Office Analysis," and "Safety Awareness Leaflets." These publications introduce you to statistics-based analyses, summaries of investigation reports, must-know cases of accidents, and region-specific subjects.

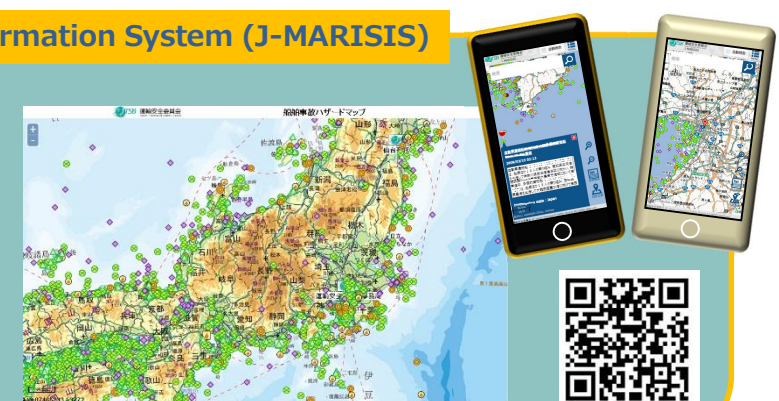
We also issue the English version of "JTSB Digests" and "Annual Reports" as part of our efforts to disseminate information overseas.



### Japan-Marine Accident Risk and Safety Information System (J-MARISIS)

In order to further enhance the safety of maritime transport, the J-MARISIS is provided on the website to display information on accidents and risk information on a map interface.

A global version that enables the search of investigation reports by accident investigation authorities overseas, as well as a mobile version for smartphones and tablets, are also available for use.

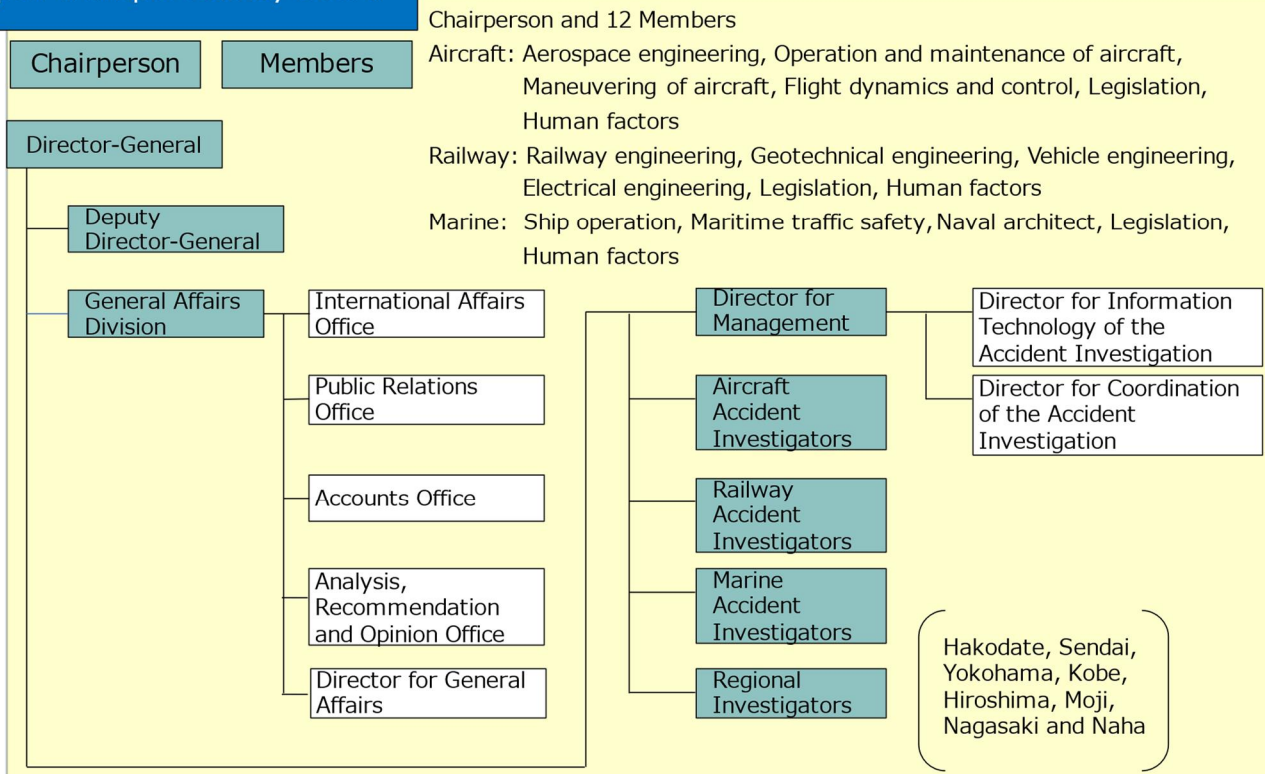


- \*1 "Serious incidents" (In the case of marine, "Incidents") are situations deemed to bear the risk of accidents occurring.
- \*2 Provision of factual information to relevant administrative organs...On finding out an urgent, unsafe issue in the process of an accident investigation, the JTSB immediately gives information to relevant administrative organs.
- \*3 Opinion...In addition to issues raised from an investigation result, the JTSB also states opinions when deemed necessary on preventive measures to the Minister of Land, Infrastructure, Transport and Tourism or heads of relevant administrative organs in the process of the investigation or based on findings from similar accidents in the past, in order to prevent the recurrence of accidents or mitigate the damage.
- \*4 Recommendation...The JTSB recommends the Minister of Land, Infrastructure, Transport and Tourism/parties relevant to the causes to take preventive measures/actions in order to prevent the recurrence of accidents or mitigate the damage, based on the process or the findings of the accident investigation. The Minister of Land, Infrastructure, Transport and Tourism shall report the preventive measures on the basis of recommendation to the JTSB. The JTSB may, when the parties relevant to the accident have not taken any measures in accordance with the recommendation without justifiable grounds, make it public to that effect.
- \*5 Safety Recommendation...In the event of the occurrence of an aircraft or marine accident, the JTSB recommends relevant foreign organs and/or persons concerned to take preventive actions that it considers necessary to be taken promptly to enhance safety at any stage of the accident investigation on the basis of international convention.



# Organization

## Japan Transport Safety Board



## Activities of JTBSB

### Consideration for victims

JTBSB provides information on accident investigations for victims and their families, or the bereaved, and responds to their voices.

Please do not hesitate to contact us.

Victims and their Families Liaison Office  
email: [hqt-jtsb-faminfo2021@gxb.mlit.go.jp](mailto:hqt-jtsb-faminfo2021@gxb.mlit.go.jp)



### Outreach lectures

Outreach lectures are conducted to broadly convey and communicate information about the work carried out by the JTBSB and to create an opportunity for collecting honest opinions and feedback from the general public.

Members of the staff are dispatched to schools and various seminars as lecturers to conduct sessions on contents that are useful for preventing and mitigating damage from aircraft, railway, and marine accidents. Please refer to the website of the JTBSB for application procedures.

<https://jtsb.mlit.go.jp/demaekouza.html>



### International activities

International organizations are involved in the development and operation of systems for investigating aircraft and marine accidents. In conducting such investigations, the cooperation and collaboration of accident investigation authorities of the relevant states is required.

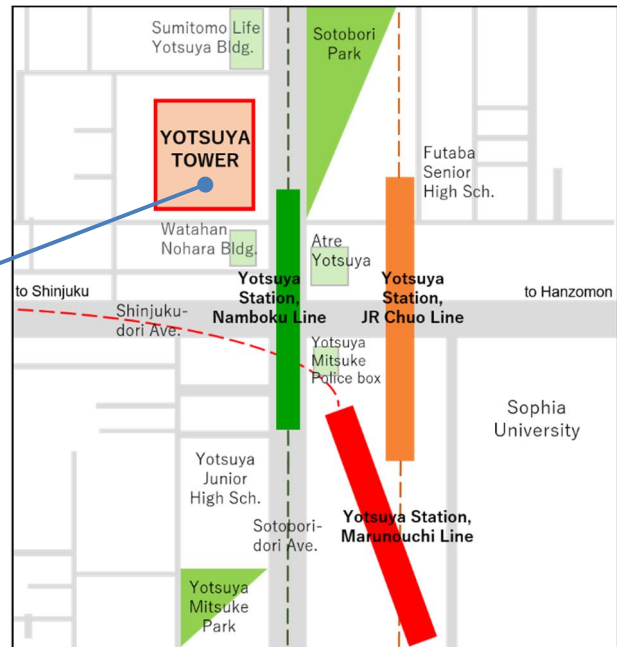
In addition to facilitating smooth cooperation and collaboration with other states, various international conferences are also organized in order to enhance the effectiveness of measures to prevent the recurrence of accidents, such as by sharing information on accidents and investigation methods. The JTBSB participates in these conferences actively.



**Japan Transport Safety Board**  
 1-6-1 Yotsuya Shinjuku-ku, Tokyo,  
 160-0004, Japan  
 Tel: +81-3-5367-5025



URL  
<https://jtsb.mlit.go.jp/english.html>



## Regional Offices and Jurisdictions

(The jurisdictions are divided only for the investigation of marine accidents/incidents)

### Hakodate Office

24-4, Kaigan-cho, Hakodate City, Hokkaido,  
 040-0061, Japan  
 Tel: +81-138-43-5517

### Sendai Office

1-3-15, Gorin, Miyagino-ku, Sendai City, Miyagi,  
 983-0842, Japan  
 Tel: +81-22-295-7313

### Yokohama Office

5-57, Kitanaka-dori, Naka-ku, Yokohama City,  
 Kanagawa, 231-0003, Japan  
 Tel: +81-45-201-8396

### Kobe Office

1-1, Hatoba-cho, Chuo-ku, Kobe City, Hyogo,  
 650-0042, Japan  
 Tel: +81-78-331-7258

### Hiroshima Office

3-10-17, Ujinakaigan, Minami-ku, Hiroshima City,  
 Hiroshima, 734-0011, Japan  
 Tel: +81-82-251-4603

### Moji Office

1-3-10, Nishikaigan, Moji-ku, Kitakyushu City,  
 Fukuoka, 801-0841, Japan  
 Tel: +81-93-331-3707

### Nagasaki Office

7-29, Matsugae-machi, Nagasaki City, Nagasaki,  
 850-0921, Japan  
 Tel: +81-95-821-3537

### Naha Office

2-11-1, Minato-machi, Naha City, Okinawa,  
 900-0001, Japan  
 Tel: +81-98-868-9335



\*As of April 2025