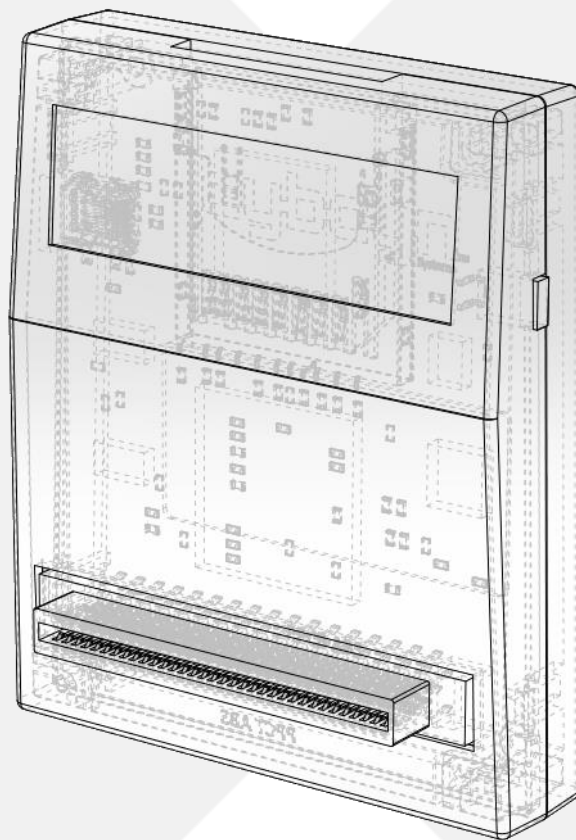




# PlayStation® Input Output

Systems Manual (Revision 3.4)



## Table of Contents:

### 0-0: About this Manual:

- [0-1: Revision History]
- [0-2: Introduction]
- [0-3: Warnings]
- [0-4: Legal]

### 1-0: Getting Started:

- [1-1: Switch Board]
- [1-2: SD Card and Menu System]
- [1-3: CDDA Audio]
- [1-4: Adding Games]
- [1-5: Powering on your PlayStation]
- [1-6: Starting a Game]
- [1-7: Unplugging PSIO]

### 2-0: The PSIO Menu System:

- [2-1: The Main Screen]
- [2-2: The Select Screen]
- [2-3: The Options Menu]
- [2-4: Load from the CD-ROM Drive]
- [2-5: Reboot the PlayStation]
- [2-6: Shortcuts]
- [2-7: Cover Art]
- [2-8: Wallpaper]
- [2-9: Lightgun Support]
- [2-10: Manually Defining the EXTDSP Mode]
- [2-11: Using the Search Option]
- [2-12: Speeding Up]

### 3-0: Switch Board:

- [3-1: Overview]
- [3-2: Installation]

### 4-0: CU2 Sheet Files:

- [4-1: Creating a CU2 Sheet]
- [4-2: Multi-BIN]

### 5-0: PSIO Systems Console:

- [5-1: Overview]
- [5-2: Uses]

## **6-0: Specifications and Usage:**

- [6-1: Technical Information]
- [6-2: PlayStation BIOS]
- [6-3: PAL vs. NTSC]
- [6-4: SCPH-9000/PSone]
- [6-5: Fastboot on System Boot]
- [6-6: Multi-Disc]

## **7-0: Updating and USB:**

- [7-1: Firmware]
- [7-2: USB]

## **8-0: Error Codes & Warnings:**

- [8-1: PSIO Cartridge]
- [8-2: Menu System]
- [8-3: System Loader]

## **9-0: Help and Troubleshooting:**

- [9-1: Generic Questions]
- [9-2: General]

## **10-0: Development Usage:**

- [10-1: PlayStation Programming with PSIO]

## **11-0: Memory Card Manager:**

- [11-1: Using the Memory Card Manager]

## **0-0: About this Manual:**

### **[0-1: Revision History]**

#### **R3.4 – Twenty Sixth Release**

- Added a new section for information regarding the Memory Card Manager.
- Improved the example of how sub-directories for 'Multidisc' files are handled.
- URL addresses updated to reflect the new PSIO link and CNAME.
- Adds all relevant information regarding the new Menu System registration process.

#### **R3.3 – Twenty Fifth Release**

- Explained that 'Covert Art' files must be 32-bits and not 8-bits.
- Improved the example of how sub-directories for 'Multidisc' files are handled.
- Other critical changes related to the latest Menu System firmware alterations.
- Improved the wording for the legacy firmware recovery procedure.
  
- Removed the old 'Lightgun' information since as of Menu System V2.6.17 a controller in Port 2 must be used to navigate the Menu System.

#### **R3.2 – Twenty Fourth Release**

- Added information stating that using "RECOVERY.BIN" requires the SD Card to be formatted as FAT32 and not exFAT.
  
- Added another Question and Answer to section [9-1] regarding the CD-ROM drive.
  
- Added information on how to speed up loading times in the Menu System for quicker boot times (see section [2-12]).
  
- The information in section [6-2] has been changed.

#### **R3.1 – Twenty Third Release**

- Changed the information in the Firmware Update section [7-1].
- Section [1-4] contains information about folder-in-folder navigation not being supported.
- Some spelling mistakes and terminology issues were fixed.

#### **R3.0 – Twenty Second Release**

- Some bookmark positions were fixed.
- New images added.
- Fixed some more grammar issues.

#### **R2.9 – Twenty First Release**

- Added and changed information that relates to Menu System V2.6.0.
- Fixed some grammar issues.
- Fixed some layout mistakes and unneeded text.
- Images updated with higher quality and resolution ones.

#### **R2.8 – Twentieth Release**

- Added information regarding unknown error codes.
- Added more 'Question and Answer' related information.
- Other minor changes and improvements throughout the document.

## R2.7 – Nineteenth Release

- New information for the CRC32 info under 'System Information' for the PlayStation BIOS.
- Error 80000017 added.

## R2.6 – Eighteenth Release

- Updated components relating to changes in Menu System V2.0.

## R2.5 – Sixteenth Release

- Fixed some grammar and general punctuation mistakes.
- Added detailed temperature information about the PSIO cartridge [6-1].

## R2.4 – Fifteenth Release

- Added information regarding LibCrypt.
- The Burn-in timer's exact time until triggered information was added [2-3].
- New information was added to do with systems crashing in certain video modes [1-5].

## R2.3 – Fourteenth Release

- New information regarding USB support for the new Systems Console [7-2].
- Added new generic information regarding changes to the Menu System.
- Added new information regarding the new 'Show Filesizes' option in the 'Options'.

## R2.2 – Thirteenth Release

- Updated the information regarding USB support on PSIO [7-2].
- Fixed a few general incorrect lines throughout the document.

## R2.1 – Twelfth Release

- Updated the information regarding CU2 generation for the new 'Systems Console' [4-0].
- Added Multi-BIN information [4-2].
- Added information on manually defining the EXTDSP Mode per image directory [2-9].
- Changed a few more minor details in most sections in regards to new firmware changes.

## R2.0 – Eleventh Release

- Added Multi-Disc information to [6-6].
- Added 'Game Shark' information to [9-1].

## R1.9 – Tenth Release

- Changed the first page image from a PlayStation console to a PSIO cartridge outline.
- Added a "Troubleshooting" section at [10-0] and moved "Development Usage" to [11-0].
- Added more information regarding 'Help' to section [9-0].
- Fixed the broken Wikipedia link to PlayStation Multi-Disc games.
- Added some Menu System screenshots to [2-1] and [2-2].

## R1.8 – Ninth Release

- Fixed all broken URL's.
- Fixed some grammar problems.
- Added more information regarding CU2 sheets to section [1-3].

## R1.7 – Eighth Release

- First public release!
- Changed the Copyright to 2016.
- Added KONAMI Justifier (Lightgun) information to section [2-8].

#### R1.6 – Seventh Release

- Added new information regarding the L3 and R3 buttons in the Menu System [2-6].
- Added information regarding Lightgun support [2-8].
- Changed the Lightgun error code description [8-2].

#### R1.5 – Sixth Release

- Fixed a few incorrect appendix numbers.

#### R1.4 – Fifth Release

- Added section [5-0].
- Added information on how to use USB with PSIO.
- Fixed some information in section [7-1].

#### R1.3 – Fourth Release

- Fixed a few grammar problems.

#### R1.2 – Third Release

- Added “Cover Art” information to section [2-7].
- Added “How to know if my PlayStation game has CDDA” to the Help section.

#### R1.1 – Second Release

- Added “Fastboot” information.
- Added ‘Modchip’ and ‘Colour Modification’ information.
- Added “How to Properly Unplug PSIO” information.
- Updated some Options information.
- Updated section [1-6], “Starting a Game”.
- Added an additional image to section [4-1], “Creating a CU2 Sheet”.

#### R1.0 – First Release

- N/A.

## [0-2: Introduction]

Congratulations on purchasing a genuine PSIO Cartridge! With PSIO we guarantee that your PlayStation console will provide you with many more years of entertainment.

PSIO began as a concept in August 2010. Development did not start until late 2012 by two PlayStation enthusiasts where the first prototype was designed from scratch. It took many revisions and prototypes until the end product was developed. The project has taken many years to complete, and the cartridge you now possess in your hands is the end result. Below are a list of important links.

Updates: <https://psio.cybdyn-systems.com.au/registrations>

Report Problems: <http://psio.cybdyn-systems.com.au/problem>

Game Compatibility: <https://psio.cybdyn-systems.com.au/compatibility>

## [0-3: Warnings]

DO NOT get your cartridge wet.

DO NOT leave your cartridge in or exposed to direct sunlight.

DO NOT expose your cartridge to extreme temperatures.

DO NOT store your cartridge where it is 'open to the elements' as dust will gather within the parallel connector, thus, not making a good connection with the PlayStation. To avoid this problem, package PSIO in the box it came with when it is not in use.

We DO NOT recommend running your PSIO cartridge without the Switch Board installed. Failure to do so will not allow PSIO to boot as it may cause bus contention which may damage your PlayStation.

We WILL NOT be held responsible for physical damage to your cartridge, nor are we responsible for the condition and or quality of your PlayStation Parallel Port.

There are NO user serviceable parts contained within your PSIO cartridge. Unscrewing or opening your cartridge will render your warranty void. Should your PSIO cartridge require repair, please contact us directly and we will assist you.

## [0-3: Legal]

'PlayStation', 'DUAL SHOCK', the "Triangle, Circle, Cross and Square" symbols and 'PSone' are registered trademarks (R) and are copyright (C) Sony Computer Entertainment Inc. All Rights Reserved. PSIO is in no way affiliated nor a licensed product by and of Sony Computer Entertainment Inc. Replication, duplication or reverse engineering of the PSIO hardware and or software is strictly prohibited, and may result in severe civil and criminal penalties.

All source codes, software, binaries, bitstreams and hardware for PSIO are Copyright (C) 2010-2024 Cybdyn Systems. All Rights Reserved.

By running our hardware on your PlayStation, you agree to our terms and conditions, and you agree that PSIO is a development tool and as such, it is solely intended for use as a developer's tool. PSIO is in no way a modchip, modcard or device which bypasses or circumvents the internal security of the PlayStation system hardware or software in any shape or form whatsoever. The user of PSIO assumes full responsibility ensuring its use in accordance with local and federal laws. PSIO is in no way affiliated nor a licensed product by and of Sony Computer Entertainment Inc. The software and hardware on this site is provided "as-is", without any express, implied warranty or guarantee.

## 1-0: Getting Started

### [1-1: Switch Board]

Upon unboxing your PSIO cartridge, you will find an included 'Switch Board' kit.

This *must* be installed by soldering it to your PlayStation's mainboard prior to plugging in PSIO to the 'Parallel I/O' port on the back of the PlayStation console. If this is not completed, PSIO will simply fail to function.

What the Switch Board does is it serves two functions. Firstly, it re-routes two important signals from the CXD-1815Q microcontroller (MCU) to the Parallel Port, and secondly, it allows 'switching' of the said MCU signals which allows your PlayStation to boot normally should the PSIO Cartridge be unplugged from your PlayStation console.

As mentioned, failure to install the Switch Board will not allow PSIO to boot and can cause bus contention which *may* damage your PlayStation.

To continue reading about the Switch Board setup process, please follow through to the section labelled [3-0: Switch Board].

For more help and information regarding the Switch Board, please see [http://psio.cybdyn-systems.com.au/switch\\_board](http://psio.cybdyn-systems.com.au/switch_board)

### [1-2: SD Card and Menu System]

Once the Switch Board has been installed, grab an SD Card that ranges from 4GB to 32GB (SDHC) or 32GB to 512 GB+ (SDXC), and plug it into your computer.

Using the table below, format the appropriate filesystem to the SD Card:

- 4GB to 32GB as FAT32
- 32GB to 512GB+ as exFAT

It is advisable to use 8 KB for the allocation sector/cluster size.

As you can see, only two filesystems are supported which are FAT32 or exFAT. Partitions such as GPT (which are popular on systems such as Linux) aren't supported.

Note that whilst the Menu System is running, changing SD Cards from FAT32 to exFAT (or vice versa) is okay as PSIO will re-initialise the correct filesystem as required. The Menu System file (MENU.SYS) must however be the exact same file that was initially booted on the PlayStation and the file must be present on the SD Card at all times.

Once you have done that, head over to <http://psio.cybdyn-systems.com.au/registrations> and download the 'Menu System' Firmware. Please login and register your device if you have not done so already. Once completed, extract and copy "MENU.SYS" to the root of your SD Card.

Next, you may begin copying your software images. PSIO only supports the \*.IMG, \*.ISO and \*.BIN image formats. The extensions are *not* case sensitive. Your images must also be contained within folders (an example is shown below in section [1-4: Adding Games]). Anything else that is present in the SD Cards root directory *will* be ignored by the Menu System (excluding the wallpaper bitmap image file and update files).



Any directories and or filenames greater than a certain number of characters (that is including the extension (EG: “.ISO”)) will be cut off within the Menu System by an ellipsis (three periods (“...”)) to avoid extrusion of the characters on screen. To scroll and see the game foldername, hold the RIGHT directional button down whilst in the primary game list.

Note that games will fail to mount if they exceed 60 characters, so be sure you do not exceed this amount.

The maximum amount of folders that PSIO will allow in the SD Card root directory is 1,000 and is file system independent (IE: FAT32 or exFAT do not have a separate limit and they are both set to 1,000).

Images *may* also fail to mount/open however if they contain two periods (full-stops) in the filename. EG: “Crash.Bandicoot.BIN” will fail since the Menu System thinks that the file to load will be “Crash.Ban”. This is because the three (3) letters after the first detected period are classified as the file extension.

We only guarantee that a copy (backup) from your original **black** PlayStation CD-ROM that has a matching checksum (CRC32) listed on [ReDump](#) will work correctly on PSIO (IE: the rip from your original disc must be ripped without any errors). We do not condone booting illegal copies or downloaded games from the Internet (which are also known as ‘pirated games’ or ‘warez’).

### [1-3: CDDA Audio]

If your PlayStation title supports and requires CDDA playback, a separate file (which we call a ‘CU2 sheet’) *will* be required in the games folder alongside your image file.

When using a CU2 sheet, the filenames must also match each other:

IE: “Destruction Derby.BIN” and “Destruction Derby.CU2”.

EG:

- SD:\Destruction Derby\DDERBY.BIN;
- SD:\Destruction Derby\DDERBY.CU2;

Note that white spaces are allowed in both the folder names as well as the file names.

The CU2 file essentially contains a list of track times. PSIO will look at them and utilise them in accordance with your game image as need automatically. If you do not specify a CU2 sheet, your game *should* work perfectly fine, but some games such as ‘Rayman’ have been reported to fail if it is not present. If no CU2 sheet is defined, you will not hear any in game music.

Note, that only games that use CDDA audio need a CU2 sheet. For details on how to create a CU2 sheet and use it with PSIO, please see [4-0: CU2 Sheet Files].

### [1-4: Adding Games]

Please keep in mind that whilst PSIO can boot downloaded PlayStation games from the Internet, this is illegal. PSIO was developed to play your personal backed-up games thus leaving your original copies secure and intact whilst avoiding troublesome CD-ROM issues (which is a common problem with most if not all PlayStation consoles).

With that info aside, please remember that games must be copied into folders first. Note that folder-in-folder navigation is not possible. So, as an example, the italic marked game title below is a directory and will be displayed in the Menu Systems list accordingly.

EG: “SD:\Crash Bandicoot [PAL]\crash bandicoot.BIN”.

## [1-5: Powering on your PlayStation]

Once you have the Menu System copied as well as some games on your SD Card, insert the SD Card into your PSIO Cartridge.

**Ensure that the label side of the SD Card is facing away from you, then, press the card all the way down until you hear it 'click'. The card should slide into its slot smoothly. If it does not, do not force it in. You may have the card the wrong way around or you are using an incompatible card.**

Once you have done that, ensure your PlayStation has all the required connections, such as power and video. So long as your Switch Board soldering is okay and you've re-assembled your PlayStation correctly, you may now press the power ("I/O" or "POWER") button on your console.

Your PlayStation will now begin its normal initial boot sequence, beginning with the BIOS, followed by the License Screen. Take notice that the original license information (EG: SCEI, SCEE or SCEA) beneath the PlayStation logo has been replaced with the words "PSIO". If you see this string of letters, the Switch Board has been installed correctly and the system should proceed to continue booting.

The setup screen will first ask you to set the required video mode (Region Setup). Whilst PSIO is very accurate at automatically reading the correct video mode for you to use, some PlayStations can utilise any video mode if and only if they are using RGB. We won't jump into the technicalities and the advantages/disadvantages of video modes at this stage, but, by pressing the 'Cross (ⓧ)' button [Yes], the automatically detected video mode will be selected for you, whilst 'Triangle (Ⓞ)' [No] will do the opposite. Please note that if for whatever reason your console either locks up or doesn't produce a video signal after selecting the video mode you wish to use, please reboot your console and select the opposite mode of what you previously had chosen, since the setups settings are not saved until you are asked to do so at the end of the setup procedure.

Note that if you're using a DUAL SHOCK controller, you will notice that vibration happens when navigating. This feature may however later be disabled in the Menu Systems under the option 'DUAL SHOCK Vibration'.

Next, a keyboard will fade in asking you to enter your name. All this feature does is use your name throughout the Menu System from time to time as a greeting. If you do not wish to enter your name however, simply leave it blank and press the 'Start' button to continue.

The following page is the screen position setup screen (Screen Adjustment). Simply use the directional buttons on your controller to position the example Menu System so it displays and fits as best as possible. Once you have settled on the desired position, press the 'Cross (ⓧ)' button [Accept/Select] to continue to the next screen.

The final page is a disclaimer for PSIO (IE: The 'Terms and Conditions'). We ask that you take your time and read this page as it contains useful information in regards to copyrights and legal advice regarding the use of your cartridge. Pressing 'Triangle (Ⓞ)' [Accept and Save Setup] will mean that you agree to the terms and conditions, and wish to save your settings.

You will now be presented with an introduction video. The video and setup screen will only be shown when your PSIO cartridge is brand new, but if you would like to skip it you may press either the 'Cross (ⓧ)' button or 'Triangle (Ⓞ)' button to skip it.

## [1-6: Starting a Game]

After the video has ended, your cartridge may execute some firmware updates. Follow the prompts as needed. Once completed you should now be presented with the Menu System. All of the games that you copied earlier will appear in the menu list. Use the directions buttons ('Up' and 'Down' arrows) to scroll, and press the 'Cross (ⓧ)' button [Select] to bring up a small window containing some information about your selected game image (alternatively, you may press the 'Start' button instead of 'Cross (ⓧ)').

Once the game information window is open, pressing the 'Circle (●)' [Details] button will display advanced information about the game image you just selected.

- PS-EXE: The PlayStation Executable that has been mounted and will be launched.
- STACK: The starting location of the PlayStation Executable stack.
- EVENT: The number of Events the PlayStation Executable will utilise.
- TCB: The amount of Task Control Blocks that the PlayStation Executable will use.
- FILESIZE: The total size of the mounted image in Kilobytes ('USB Mode' will show "N/A")\*.
- EXTDSP Mode: If a manually created XA/CDDA file exists, it will state the chosen setting.
- MULTIDISC.LST? Should you have a MULTIDISC file, this will output either "Yes" or "No".
- REGION? The Region detected from your image. Some games *may* output "Unknown".
- CU2 SHEET? If a CU2 sheet present, this will output "Yes". Otherwise "No" if not found.

\* 'EXTDSP Mode' will change to "Midboot" or "LoadExec" based on the "Execution Method".

Whether you are on the 'Display' or 'Details' screen, pressing 'Cross (ⓧ)' [Play] (or again, alternatively, 'Start') will finally boot your game. By default, the 'PlayStation Logo Popup' splash will chime in and take effect before booting your game (this may be changed or disabled in the 'Options' if need be under the option 'PlayStation Logo Popup').

To select a new game, simply press the 'RESET' button on your PlayStation console. You may also turn off and on your PlayStation should you need to. The whole procedure will now repeat. If you get tired of waiting for the 'BIOS' and 'License Screen' to run their toll, when the Menu System has booted, press the 'Triangle (△)' [Options] button, and toggle "Fastboot on System Boot" to "Yes" by pressing the 'Cross (ⓧ)' [Toggle] button. This will skip both boot screens, thus reducing your boot up times and getting you into your games quicker (see [6-5: Fastboot on System Boot] for more detailed information regarding Fastboot).

To boot your original PlayStation format 'black' CD-ROM games, open the PlayStation drive door, place your game disc into the PlayStation drive and close the drive door. As long as you're not in 'USB Mode', you may then go ahead and press the 'Circle (●)' [Load CD] button. Your game will now boot as if the PSIO cartridge were never installed. Note that your CD-ROM will only boot if the Switch Board has been installed. Also note that should booting from a CD-ROM fail, you must reset your PlayStation. Keep in mind that when a disc is in the CD-ROM drive, the disc will be kept in an idle state (IE: the disc will be 'free spinning' at 1x speed).

### **[1-7: Unplugging PSIO]**

When it comes time to unplug your PSIO cartridge from your PlayStation, it is important that you do not twist and or unplug the cartridge on an angle. This will put stress on PSIO's gold plated pins housed within the Parallel Port, the Parallel Port plastic and your PlayStation console.

Instead, firmly grasp the cartridge with a single hand on either side of the plastic case near the top, and pull the top of the cartridge towards you to generate a 'pivot' effect. The bottom side (Parallel Port) should 'pop' out equally on both sides, thus putting no stress on any of the pins or any angle on the cartridge.

The same principle applies to plugging in your cartridge. Ensure that when you are plugging in PSIO, both corners are straight (parallel), and in-line with the PlayStation before inserting the cartridge.

We are not responsible for any damaged caused to your cartridge by improper insertion or removal.

## 2-0: The PSIO Menu System:

### [2-1: The Main Screen]

At the top of screen is the PSIO logo.

The centre of the screen will display all folders found within the SD Cards root directory. We recommend naming each folder the same as the games title that the developers intended to keep the list clean and concise.

The list is hardcoded to display everything alphabetically. The Menu System will alphabetically sort all 64 characters of the directory string. If you have more than or equal to 256 folders in the root directory, this number drops considerably down to 16. As a result, some elements will may not be sorted correctly. This is done to ensure that the Menu System operates at a high speed. This option cannot be changed. Note that if you do have more than 256 files on the SD Card, whilst booting, the Menu System will take longer to load, and hence, display the string "Please Wait" whilst it is loading up and processing data.

If you have more than 11 games in NTSC mode or 13 games for PAL mode, on the right side of the screen, arrows will be displayed to indicate where you are positioned within the games list. You may fast scroll though the list by pressing and holding 'L2' for up and 'R2' for down, or if you have a "DUAL SHOCK" controller, by using the left 'Analog Stick' (see section [2-5: Shortcuts] for more information).

Under the games list is a scroll box that contains copyright information. Lastly, below the scroll box are the navigation buttons.

Take notice that the Menu System is for use under the English language only, and no other languages are supported. This includes both file names and directory names as well. Using another language *may* result in strange behaviour of the Menu System.



## [2-2: The Select Screen]

The games selection window contains your game title (from the folders name), followed by a cover art image in the centre.

Pressing 'Circle (○)' [Details] will display information about your game (see [1-6: Starting a Game] for more information on these elements). Pressing 'Circle (○)' [Display] again will change back to the cover art.

Note that if you have a MULTIDISC.LST file, pressing 'Circle (○)' [Display] yet again will show more information. Once you are in the 'M-Disc' dialog window, it is possible to scroll in a mini-list should more than one game be listed in your MULTIDISC.LST file. Using this method, you can select which disc you would prefer to load first which is exceptionally useful.

Pressing 'Cross (×)' will boot your selected game, and pressing 'Triangle (△)' will return you back to the primary games list.



## [2-3: The Options Menu]

### **Video Mode:**

This will change the Menu System into either PAL or NTSC for your TV. PAL will run at 50Hz whilst NTSC will run at 60Hz, thus the NTSC menu runs 'smoother'. NTSC is also running at a screen height of 240 pixels, whilst PAL is capable of rendering at 256 pixels, thus, the PAL menu can fit more games on the screen. As a note, the Menu System is hardcoded to run at 25 frames/sec for PAL and 30 frames/sec for NTSC.

### **Progressive Scan:**

Setting this to either 'Yes' or 'No' will change the GPU scan mode from either 'Progressive' or 'Interlaced' respectively.

### **Sound Effects:**

Enable or disable Sound Effects within the menu.

### **PlayStation Logo Popup:**

When you launch a game, you have the option to display a popup icon or animation. The available options for this setting are:

- '94 Splash (PlayStation 1994 TV Commercial Splash Sound),
- Japanese (The word "PlayStation" pronounced in Japanese),
- Off (Disable the popup logo entirely).

### **Background Music:**

There are 7 selections to choose from, which are:

- Off (disable the background music within the menu from playing entirely),
- Original Menu (the original classic Menu System theme),
- DEMO 1 (V1) (iconic DEMO 1 theme from Version 1+ discs),
- DEMO 1 (V3) (iconic DEMO 1 theme from Version 3+ discs),
- Underwater (DEMO 1 Version 6+ (written by Jason Page)),
- UK DEMO #18 (Official PlayStation Magazine UK Demo Disc #18),
- UK DEMO #58 (Official PlayStation Magazine UK Demo Disc #58), and
- UK DEMO #22 (Official PlayStation Magazine UK Demo Disc #22),

### **Burn-in Timer:**

CRT (Cathode Ray Tube) televisions (TV) and Plasma televisions have a tendency to 'paint' themselves with a permanent picture should that picture be displayed for more than several minutes (this is called 'Burn-in'). If a static picture is left idle for several hours, the burn-in is much more catastrophic.

What the burn-in timer (screen saver) does is when you are away from the PlayStation for 15 seconds, it will automatically blank the screen to an RGB value of 0, 0, 0 (black), and move a PlayStation logo around the screen randomly. This technique will avoid the Menu System from being burnt into your display.

*It is highly recommended that CRT or Plasma TV owners turn on this setting to prevent picture tube burn-in to prolong the life of their display(s), but it is only beneficial if the 'Menu System' will be left on idle for more than several minutes (EG: Leaving PSIO running at a kiosk).*



**Selection Bar Colour:**

Changes the selection bar colour from the standard Blue, Red, Green, Yellow, Grey or White.

**Japanese Navigation:**

Asia specific PlayStations tend to have the 'Circle (○)' button as 'Accept or Okay', and the 'Cross (×)' button as 'Decline or Back'. This option will invert the system so that 'Circle (○)' and 'Cross (×)' are effectively swapped.

**MC68HC705 License:**

This option allows the license string contained within the HC05 (CD-ROM command handler microcontroller) to be forcefully changed when launching a game. This string may be more recognisable by you as the four letters which appear underneath the PlayStation logo during the BIOS bootup stage (also known as the license screen). The reason for adding this option is because some software titles (such as "Dino Crisis") check this license string, so the option to either make it "SCEA", "SCEE", "SCEI" or "AUTO" has been added.

**Advanced Information:**

**SCEA** will set it to an American "Sony Computer Entertainment America" license string.

**SCEE** will set it to a European "Sony Computer Entertainment Europe" license string.

**SCEI** will set it to a Japanese "Sony Computer Entertainment Inc." license string.

**AUTO** will set the license string automatically to either "SCEA", "SCEE" or "SCEI" directly based off of the data pulled from the selected software image (this can be seen on the 'Details' page when the game information window is open under the text section labelled "REGION?").

**Fastboot on System Boot:**

This option enables or disables Fastboot. This program code is built into your PSIO Cartridge and no external files are required to use this feature. Fastboot will essentially skip the PlayStation BIOS boot procedure, thus getting you into the Menu System and your games quicker. Note that the Fastboot toggle option is disabled whilst in USB Mode.

**Fastboot on Game Boot:**

Enabling this option will effectively shorten the boot times as it enables skipping the Sony BIOS bootup sequence thus getting you into your game quicker. Disabling it will run the full startup procedure of the Sony BIOS (which many users enjoy for nostalgic reasons). As a trick, if this mode ("Fastboot on Game Boot") is disabled we recommend having "Fastboot on System Boot" enabled so that resetting the PlayStation does not run the Sony BIOS bootup procedure.

Note: This option does not work on some Japanese consoles and will be disabled on them if it is not supported by your BIOS.

**Execution Mode:**

Selects whether to use "LoadExec" or "Midboot" for executing PS-EXE's. When 'Midboot' mode is active, the "EXTDSP Mode" option is disabled since 'Midboot' operates by rebooting the PlayStation, skipping the startup procedure and using the BIOS to execute the game directly. 'LoadExec' however loads the PS-EXE into RAM and jumps to it whilst preserving some elements in memory (as well as some registers) which can cause problems for some games. 'Midboot' uses the 'K1V4 EXTDSP' mode internally and is recommend to use for maximum compatibility.



### **EXTDSP Mode:**

This will allow you to toggle between four (4) levels of our intelligent R3000A CPU register 'hook' that enables eXtended Architecture (XA) audio or Compact Disc Digital Audio (CDDA) to function correctly. The default option is 'Midboot' and there are no modes for it (IE: It is set to 'N/A').

You have the ability to completely disable "EXTDSP Mode" but this is only available when the "Execution Mode" is set to 'LoadExec' and the mode for 'LoadExec' is set to 'Off'. Setting this to 'Off' will only be useful if you find your game freezes or crashes. However please note that all CDDA and XA audio will be disabled. Please be sure to contact us if you find this is the case with your game so we may address the problem and release a new firmware update.

If you would like to set a game selection to forcefully use an option automatically so you do not have to manually keep changing and remembering modes for specific games, please read section **[2-10: Manually Defining the EXTDSP Mode]**.

### **Advanced Information:**

**K1V1** is the first version of our hook. It stores the register space and CD volume registers very low in the PlayStation Kernel. Some games require this setting in order to run correctly. This setting is mostly used with 'Psygnosis' titles.

**K1V2** is the same as K1V1, but restores the K1 register *after* updating the K1 register value. Not too many games will work with this option, but it is included nonetheless.

**K1V3** is directly based off of K1V1 but stores the register space and 'CD Volume Registers' much higher in the PlayStation Kernel. Most if not all games work with this option.

**K1V4** was completely written from scratch. It only updates the registers at the same rate as the display update rate thus giving the highest compatibility. It is the default and recommended option to use.

**K1V5** was based off of K1V4 but installs into the exception handler instead of a kernel location.

**K1V5\_SPUH** operates the same as K1V5 but copies the lower SPU RAM (only half of it) to the expansion addressing for PSIO to read and process. It is the most complex hook on the system and fixes a plethora of titles which depend on this SPU data being present.

**K1V5\_SPUF** is the same as K1V5\_SPUH but copies all of the lower SPU RAM.

### **DUAL SHOCK Vibration:**

If a DUAL SHOCK controller is present, this option will be able to be changed to either "On", "Popup Only" or "Off".

The setting "On" will enable vibration on all menu selections and dialog windows, whilst the setting "Popup Only" will only cause the DUAL SHOCK controller to vibrate when the "PlayStation Logo Popup" occurs during a game selection and execution stage. Note that both the '94 Splash' and 'Japanese' popups have different vibration patterns.

Also note that if no DUAL SHOCK controller is detected, this option will not be able to be changed and the resulting option will contain "N/A".

**MemCard Pro/PS1 Digital ID:**

When set to 'Yes' this will enable the MemCard Pro and PS1 Digital game identification features. It will also permit the PSIO logo to be displayed on the MemCard Pro.

**Enable Wallpaper:**

This option allows you to show or hide the 'WALLPAPER.BMP' file present in the root of your SD Card. If the file is not detected, an error is present regarding the file, you're in USB Mode or your PlayStation GPU is the old model, this option will be disabled. For more information on setting up the wallpaper, please see section [2-8: Wallpaper].

**Alphabetise Folders on Boot:**

This option allows you to forcefully enable or disable the automatic alphabetical sorting of folders on the SD Card. Disabling this option results in a considerable speed up if you have a large number of directories on the SD Card.

**> Memory Card Manager:**

Selecting this will start the Memory Card Manager program which can be used to copy, delete and move saves on, to or from Memory Cards as well as the SD Card you have plugged into your PSIO Cartridge. For more information, see section [11-0: Memory Card Manager].

**> Change Username:**

Selecting this option will bring up an on-screen keyboard which will allow you to change a username. Usernames have a maximum input length of 20 characters. If you'd like to remove or clear a username, simply leave the text input section blank and press the 'Start' button.

**> System Diagnostics:**

Will show some basic information about your PlayStation such as the amount of memory free and the current load of the CPU and GPU as well as the type of GPU model detected and controller detected. It will also state the current warning or error present in the system (if applicable).

**> System Information:**

This will display the Menu System version, the total amount of games (folders) found, the 'ARM Firmware' version, the 'FPGA Firmware' version, your PlayStation BIOS ROM version (including the CRC32), what file system is detected on your SD Card (USB mode will show "USB" however), your cartridge Serial Number and other miscellaneous information.

Pressing the 'Circle (○)' [Credits] button show further information about your cartridge, including the System Loader version, the Fastboot version, the Username and SD Card File System.

**> Legal Information:**

Displays copyright notices to prevent Sony from attacking us with their "Move Controllers". Pressing the 'Circle (○)' [Next] button will trigger a sound bite, and display further copyright information on the behalf of Sony Computer Entertainment Inc.

**> Play the Intro Video:**

Self-explanatory.

**> Show the Credits:**

Explanation is redundant.

**> Show List of Changes:**

Shows a list of fixes, improvements and adjustments that have recently been carried out on your PSIO Cartridge during the last update.

**> Adjust the Screen:**

Changes the position of the drawing vectors that the PlayStation uses for its coordinates. PAL mode will display a 320x256 image for adjustment, while NTSC mode will display a 320x240 image for adjustment.

**> Install the PlayStation Debugger:**

This will allow you to install our debugger for use with the 'Systems Console'. It will only function once a game has been booted. Debugging the Menu System is prohibited.

**> Go to the PlayStation BIOS:**

Reboots the PlayStation and goes to the BIOS (useful for accessing the Memory Card manager).

**> Reset Options Defaults:**

Resets everything back to their factory default settings.

Alternatively, you may hold the 'START' + 'SELECT' buttons during the Menu Systems boot process (the screen where the loading icon and PSIO logo are displayed) to force a hard reset.

**Saving Changes:**

Changes are not actively saved (you must do it manually). Whilst still in the [PSIO System Software Options] menu, pressing the 'Circle (○)' [Save] button will bring up a secondary window asking if you would like to save your chosen settings to PSIO's internal Flash ROM. Pressing 'Cross (✕)' [Yes] will save your chosen settings, in which they will then be loaded on boot automatically the next time you start your PlayStation.

#### [2-4: Load from the CD-ROM Drive]

To load an original disc based PlayStation game, first insert your PlayStation formatted game into the disc drive. Once you have done that, boot up the Menu System and press 'Circle (○)' [Load CD] to bring up the "Load from the CD-ROM Drive" window. You may now press 'Cross (×)' [Yes] to boot your game. Due to the nature of how PSIO functions, if loading from the CD-ROM fails, you must reset your PlayStation 1 manually.



#### [2-5: Reboot the PlayStation]

Should you wish to restart your PlayStation 1 from within the Menu System, there is an option to do so. Simply go to the 'Options Menu' by pressing 'Triangle (△)' [Options] and scrolling down to the option "Restart the PlayStation".

#### [2-6: Shortcuts]

Within the Menu System, shortcuts have been implemented to help speed up navigation. You may use the 'L2' and 'R2' buttons within the primary games list to fast scroll. Fast scrolling may also be used within the "PSIO System Software Options" screen. For an instant fast scroll with no delay, DUAL SHOCK controller users may use the left 'Analog Stick', or click either the 'L3' and 'R3' buttons to jump to the top of the games list, or the bottom of the games list.

Note that (when "Sound Effects" are enabled) the 'L2' and 'R2' buttons do not produce any audible scrolling sounds. This is because when scrolling at a high speed, the sound effect must be disabled systematically as it sounds like one continuous tone due to a lack of pause/delay.

As mentioned in the [2-3: The Options Menu] section, to reset the Menu System and restore the default settings, you may hold the 'START' + 'SELECT' buttons during the Menu Systems boot process (the screen where the white loading bar and PSIO logo are displayed). Note that this will also enable the first time boot video to be played again.

### [2-7: Cover Art]

To add custom covers, you *must* have a bitmap (.BMP) image that is 80 pixels wide by 84 pixels high (80x84) for use on the PlayStation. You may not use any other size, be it larger, or smaller. The bitmap file *must* also be 32-bits and not 8-bits, so ensure you save it as so. Once you have a bitmap in those dimensions (and it is 32-bits), simply copy and place the bitmap image (cover art) in your games folder.

You may use any name for the cover art as the Menu System will automatically look for the filename extension, “.BMP” (uppercase or lowercase is fine as the extension is *not* case sensitive). However, you must *not* exceed the maximum character length of 60 chars, otherwise, it will fail to detect the bitmap file.

### [2-8: Wallpaper]

The Menu System allows the use of custom background images (IE: wallpapers). To enable this feature, simply create a Bitmap (BMP) file which is exactly 320x256 pixels in size and place the file in the root directory of your SD Card as the filename ‘WALLPAPER.BMP’.

Note that the file size must not exceed 250,814 Kilobytes (KB).

### [2-9: Lightgun Support]

When a Lightgun is plugged into the PlayStation and the Menu System is running, you must use a controller in Port 2 to control the Menu System.

### [2-10: Manually Defining the EXTDSP Mode]

Based on the information in section [2-3: The Options Menu], option 9 (EXTDSP Mode), it is possible to toggle between our different intelligent R3000A CPU register hooks that enables the ‘eXtended Architecture’ (XA) audio or Compact Disc Digital Audio (known as CDDA or also known as Redbook audio) to function correctly. However, it can be very tedious and frustrating to manually change this option every time you wish to play a different game.

To overcome this issue, we have added into the Menu System logic the option to manually define this settings value. To do so, simply create a file named either “K1V1”, “K1V2”, “K1V3” or “K1V4” and place it in your images directory (along with the Bitmap image (\*.BMP) and “MULTIDISC.LST” file if they exist).

The file must *not* have an extension associated with it (EG: “K1V1.TXT”), or the Menu System will fail to detect it (IE: It must only be called “K1V1”). Do not place more than one (1) manually defined file in your images directory.

Note: Toggling the setting ‘EXTDSP Mode’ in the ‘Options’ to “Off” will override any of the four (4) defined files. You will also know when you’re using a forced/overridden EXTDSP mode when an asterisks (\*) appears next to the “EXTDSP MODE:” text whilst you are on the ‘Details’ screen of the current game selection.

### [2-11: Using the Search Option]

The Menu System has a very unique feature which enables the use of searching for titles present on your SD Card. To use this feature, simply press the ‘Square (◻)’ [Search] button and begin typing a known game that is present on your SD Card. This feature is very useful as it not only makes finding your game easier, but much quicker too.

Searches use the well-known ‘strstr’ C function. The search is case insensitive, and it simply searches for the first location of the text you have entered within the games list. There are no wild-cards in this search routine. Note that processing times can be slow on the PlayStation due to the speed of the CPU.



#### [2-12: Speeding Up]

You may notice that the Menu System takes several seconds to load when powering on your PlayStation. This is because the system performs multiple checks which takes time for the CPU in the PlayStation to calculate.

However, some other options can be altered to assist in speeding up load times, such as:

- Setting "Enable Wallpaper" to 'No',
- Ensure "Fastboot on System Boot" and "Fastboot on Game Boot" are set to 'Yes',
- Setting the "Background Music" to 'Off',
- Setting "Alphabetise Folders on Boot" to 'No',
- Keeping the amount of games on the SD card small (under 200 is best), and
- Not using Bitmap cover art files for games.

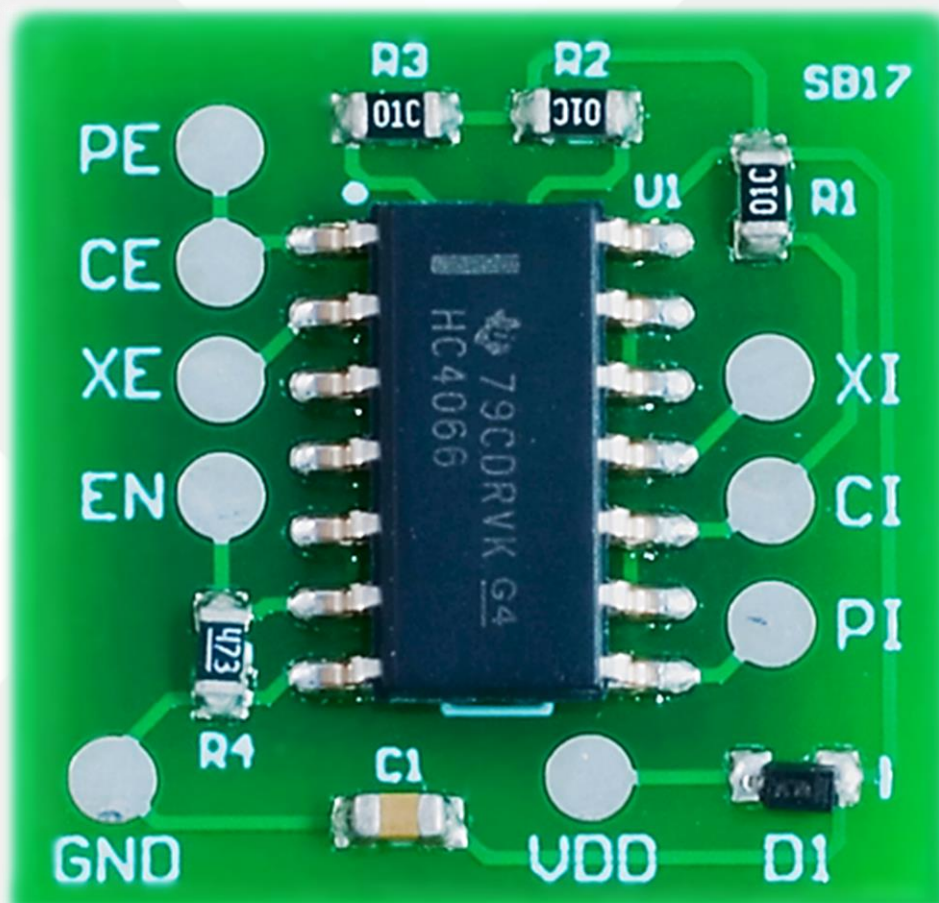
### 3-0: Switch Board:

#### [3-1: Overview]

Sony never provided direct access to the CD-ROM CPU on the Parallel I/O bus. In our case, access to the Chip Select and Interrupt lines. What the Switch Board does is it actually switches the required address lines and forwards them through to the PSIO cartridge. The Switch Board also allows PSIO to control the CD-ROM directly and give us complete control over it which is why booting original discs still works.

#### [3-2: Installation]

We will not cover installation of the Switch Board in this document. Setup and installation information can be found in separate files located at [http://psio.cybdyn-systems.com.au/switch\\_board](http://psio.cybdyn-systems.com.au/switch_board)





## 4-0: CU2 Sheet Files:

### [4-1: Creating a CU2 Sheet]



There are two ways to create a CU2 sheet for use with CDDA. The recommended way is to use automated compilation which will compile a CU2 sheet directly based off of your image data. The second way is manual compilation which is slower and might produce errors in the CU2 data because of different file structure integrities.

As a note, both options involve using our 'Systems Console' program which runs under Windows.

Note that PSIO will always look for a BIN, IMG or ISO file and use the filename to associate itself with the CU2 sheet. CU2 sheets are not mounted but are rather referenced by the image file itself.

#### *Automated Compilation:*

In order to create a CU2 sheet automatically, you must first have your image ready to be processed by the 'Systems Console'. Most typical game images will consist of a 'Single-BIN' array which typically looks like this:

Name	Date modified	Type
 Crash Bandicoot 2 - Cortex Strikes Back (Europe).bin	21/01/2015 6:21 AM	BIN Image
 Crash Bandicoot 2 - Cortex Strikes Back (Europe).cue	21/01/2015 6:21 AM	CUE File

If you have a 'Multi-BIN' array that consists of multiple tracks where you need to convert them for use with PSIO and to also generate a CU2 sheet from them, please skip this section and jump ahead to section [4-2].

To generate a CU2 sheet from your 'Single-BIN' image for use with PSIO, simply run the 'Systems Console', and click on 'File' -> 'Convert CUE/CU3 to CU2...'. Once this is completed, you will have your original single image with a CU2 sheet for use with PSIO.

Lastly, copy your game images to your SD Card (taking into note that the BIN and CU2 must be contained within a directory on the SD Cards root directory).

Your game will now have CDDA audio.



## Manual Compilation:

In order to create a CU2 sheet manually, you must first create an empty file with the “CU3” extension. For an example on how to do that, simply create a ‘New Text Document’ and rename the extension from “.TXT” to “.CU3”. Be sure you call the CU3 file the exact same name as your game image name as mentioned in [1-3: CDDA Audio] since it will be converted using the same name from a CU3 to a CU2 later on.

Next, head over to <http://REDUMP.org/> and find your game title in the games list. For example, if your game is “Destruction Derby”, you would press ‘D’ where the “Starts with” section is, and scroll down until you see Destruction Derby. However, please take care in picking your game as you have Europe (PAL), American (NTSC-U/C) and Japanese (NTSC-J) titles available. In this example, we will assume my title is PAL, so I will click the blue European flag.

Once you have found your game and have clicked on its link, you must highlight and select the track dump listing. In the image below, you can see I’ve done that as per marked in the red outline:

**Main Discs Downloads Site Guide Wiki Forum**

Download: SHA1 • MDS • SFV • Cuesheet

### Destruction Derby

System Sony PlayStation  
Media CD  
Category Games  
Region PAL  
Languages  
Serial SCES-00008  
EXE date 1995-08-16  
Edition Original, Platinum, Rental  
EDC No  
Anti-modchip No  
LibCrypt No  
Errors count 1  
Number of tracks 20  
Write offset +2

Dumpers Jackal  
iROb0t  
Sotho Tal Ker  
pablogm123

Barcode  
7 11719 61032 8, 7 11719 61242 1

Last modified 2012-08-07 19:17

Track(s)  Cuesheet

#	Type	Pregap	Length	Sectors	Size	CRC-32	MD5	SHA-1
1	Data/Mode 2	00:00:00	01:39:18	7443	17505936	903f6210	404b066fdb3ca0e6df736693e3a302c7	09afab875c289d231b989730fd0a9d3e3159a13d
2	Audio	00:02:00	05:35:55	25180	59223360	896b55bf	00901d5163d859a28eb9e34b2ea2408b	c1a34dc96148df32785cf1fbeat6f0df1e3930c4
3	Audio	00:02:00	05:21:20	24095	56671440	001253ae	bf4662268c50f02be4453238f08d2186	0327f0b93ad8996f5402830e22d6bad15ec87dc9
4	Audio	00:02:00	05:24:09	24309	57174768	6ec65808	7617d4cfbcc37c9031e96e471863f4ec	9bda1d67ecb0a27d037d980d1ac6cd5d2e2f326
5	Audio	00:02:00	05:14:59	23609	55528368	2274c268	a3099106843a3ace21c7405429ebdbfd	2e206482b3f7a0bb2ee7a13bae62597b7c8de8bd
6	Audio	00:02:00	05:18:47	23897	56205744	7ec00bbs	a6eeda71e40b1e82fa272b061b612ec	30e514ae2dec661b0e1708f6d20e4c6b8f0d3c8d
7	Audio	00:02:00	05:13:01	23476	55215552	5a93aff9	7e5928416388ff2a5dd88c5351c9fe27	d7c86f87878d7f24027fc8f45c0023d2367cc6
8	Audio	00:02:00	02:22:34	10684	25128768	f8911a3b	b497ff7d12511efdba25ec66726d108e	3554854af1eccb0d56d778e086dca14390ce4279
9	Audio	00:02:00	03:07:63	14088	33134976	941bcf94	9d86413272993d8756c1939521c87741	357213d2b5c2736ab5036d9e4982c37e7d3539
10	Audio	00:02:00	00:24:55	1855	4362960	bbf925b8	d605efb3815e2992a7f16f984bb0290	1eaffb499307901fb0a32e9b759f945bf349541d
11	Audio	00:02:00	00:11:62	887	2086224	03ff9b15	568f7ffd4465792ebfbc6d1782c4cf9	79f256ecd44c1e666f2f2e27cd72f887876166
12	Audio	00:02:00	00:12:34	934	2196768	3ef1a02d	d1cc2db64833706e1331bdcdffcf9820	65950aa143fd632118d494d7f66b4026c9b9b9f1
13	Audio	00:02:00	02:39:56	11981	28179312	4d9d34cb	c2437e0723d7366a6597cb8b2365347	c8c8ad58bb01dead245a25461363c8b5ade05b85
14	Audio	00:02:00	02:38:26	11876	27932352	6c5b8c62	c69ebfdba6d1336156c443484f183552	1c61620cf4fb926fffd02375785696f61b01dd23
15	Audio	00:02:00	05:10:66	23316	54839232	4d627b50	fafbbe8feca370e3ce07f926e5639998	704db645b35f6d254fe7b46b1d2f65da6216217
16	Audio	00:02:00	04:36:60	20760	48827520	d76e51bc	99cf2ddbe098867e815b22b8fbde346b	8b58cad991bf24d6f0cac9c12f5ec39147add59e
17	Audio	00:02:00	00:10:56	806	1895712	abf7914f	3f3d54d5865807918a84acc205198f5e	8e1bb57e7979037aa4e3bbc073259a4358e2acd
18	Audio	00:02:00	04:58:33	22383	52644816	c58030c2	392ce53e717a9fe0eff3deea10b8e80e	4ba8802110c5f79cd80bb1633f868f5035b8e30e
19	Audio	00:02:00	00:20:67	1567	3685584	2210dbde	bf4c4c8a8f7b8cd980a999c01b94d208	63d22e75c6124750fbcbe7a1f50e79d801d7a566
20	Audio	00:02:00	00:57:43	4318	10155936	e3b3cdcb	289251943c0777ace734cc11ab376f3f65c	969a0647722f546e4434fb08850ac48f801bab38
<b>Total</b>			<b>61:39:39</b>	<b>277464</b>	<b>652595328</b>	<b>23259049</b>		

**Rings**

#	Mould SID Code	Write offset
1	IFPI 94B8	NULL
2	IFPI 94D4	NULL

Registered users online: 0 • Guests online: 33 • Feed readers online: 15

Redump 0.4  
© 2005–2015 Redump Team

Once you have highlighted it, copy it to your clip board (CTRL+C) and paste it to your newly created file, "Destruction Derby.CU3".

Next, remove the lines "Data/" from track 1, leaving just the words "Mode 2".

Following that, move the last line labelled "Total" and place that above track 1.

Finally, add in front of the word "Total" the last track number. In our case, it's track 20.

Here is an example of how your text file layout should look:

20	Total	61:39:39	277464	652595328	23259049	
1	Mode 2	00:00:00	01:39:18	7443	17505936	903f6210
2	Audio	00:02:00	05:35:55	25180	59223360	896b55bf
3	Audio	00:02:00	05:21:20	24095	56671440	001253ae
4	Audio	00:02:00	05:24:09	24309	57174768	6ec65808
5	Audio	00:02:00	05:14:59	23609	55528368	2274c268
6	Audio	00:02:00	05:18:47	23897	56205744	7ec00bb5
7	Audio	00:02:00	05:13:01	23476	55215552	5a93aff9
8	Audio	00:02:00	02:22:34	10684	25128768	f8911a3b
9	Audio	00:02:00	03:07:63	14088	33134976	941bcf94
10	Audio	00:02:00	00:24:55	1855	4362960	bbf925b8
11	Audio	00:02:00	00:11:62	887	2086224	03ffb915
12	Audio	00:02:00	00:12:34	934	2196768	3ef1a02d
13	Audio	00:02:00	02:39:56	11981	28179312	4d9d34cb
14	Audio	00:02:00	02:38:26	11876	27932352	6c5b8c62
15	Audio	00:02:00	05:10:66	23316	54839232	4d627b50
16	Audio	00:02:00	04:36:60	20760	48827520	d76e51bc
17	Audio	00:02:00	00:10:56	806	1895712	abf7914f
18	Audio	00:02:00	04:58:33	22383	52644816	c58030c2
19	Audio	00:02:00	00:20:67	1567	3685584	2210dbee
20	Audio	00:02:00	00:57:43	4318	10155936	e3b3cdbb

Don't forget to save your changes.

Your CU3 sheet is now ready for conversion into a CU2 sheet using our "System Console" program which may be downloaded from <http://psio.cybdyn-systems.com.au/downloads>.

Once you have ran the 'Systems Console' program, convert your CU3 into a CU2 by going to 'File' -> 'Convert CUE/CU3 to CU2...'. This will generate the final needed CU2 sheet. So long as your CU3 data was correct, copy your newly outputted CU2 file (Destruction Derby.CU2) to your Destruction Derby folder on your SD Card and boot your PSIO cartridge into the Menu System. As mentioned in section [1-3: CDDA Audio], the CU2 sheet name *must* match your image name or else the Menu System will fail to detect it.

Once the Menu System has booted, if you select the Destruction Derby folder, you should now see in the 'Details' screen, "CU2: Yes". Once the game has been started, CDDA (Redbook) audio should play correctly so long as your disc image has been ripped correctly.

#### [4-2: Multi-BIN]

PSIO doesn't support Multi-BIN images. However, Multi-BIN images may be converted into a single image which PSIO will accept and use. In order to merge and convert a Multi-BIN image into a single image, the 'Systems Console' program must be used.

To convert your images into a single image for use with PSIO which will also generate a CU2 sheet, simply run the 'Systems Console' and click on 'File' -> 'Batch Image Conversion...'

Next, click on the directory you would like to convert followed by 'OK'. The 'Systems Console' will now start processing the data automatically. Depending on how many tracks there are, how large they are and your computers processing power, the process may take anywhere from 5 seconds to 1 minute. Once this is completed however, you will have a single image with a CU2 sheet for use with PSIO. Lastly, copy this to your SD Card (taking into note that the image and BIN must be contained within folders on the SD Cards root directory) and your game will now have CDDA audio.

## 5-0: PSIO Systems Console:

### [5-1: Overview]

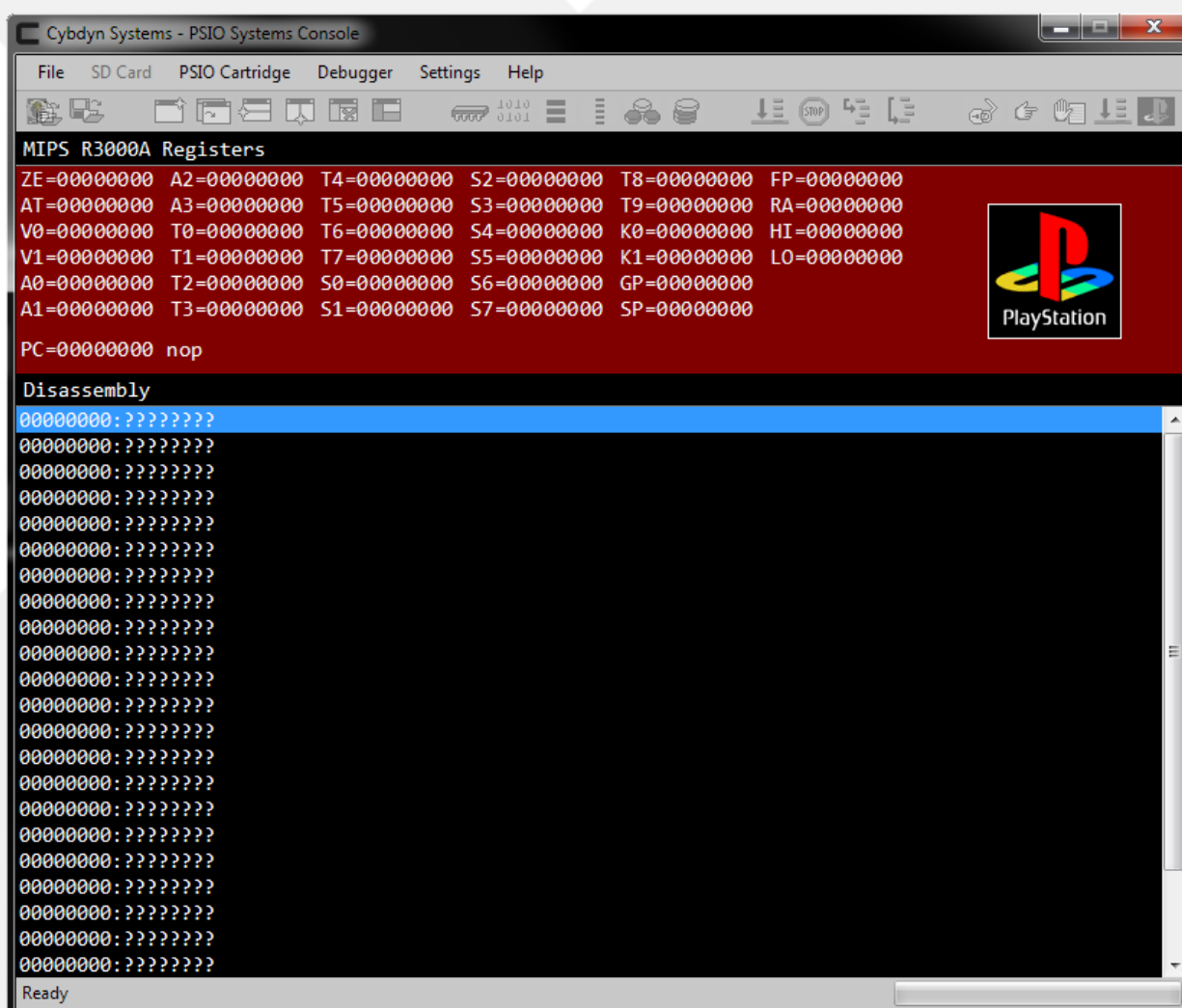
The PSIO Systems Console is a Window application that enables useful tooling for PSIO, such as the ability to run software images from USB directly instead of the SD Card.

If you have any problems regarding starting the software or if you cannot load images via USB, please contact us.

### [5-2: Uses]

The primary usage for the Systems Console is to:

- Enable USB software booting,
- Automatically scan Multi-BIN files and check their CRC32 with the ReDump database,
- Automatically convert Multi-BIN images to Single-BIN images,
- Convert Multi-Disc titles into the correct format whilst auto-generating the MULTIDISC.LST file,
- Automatically generate CU2 data,
- Convert CUE/CU3 to CU2 data, and
- PlayStation Debugging.



## 6-0: Specifications and Usage:

### [6-1: Technical Information]

Your PSIO cartridge contains a custom printed circuit board with delicate electronics inside.

Do not get your cartridge wet, do not leave it in direct sunlight and do not store the cartridge open to the elements as dust will gather within the parallel connector. Thus, this will then not allow PSIO to establish a good connection with your PlayStation console. We recommend leaving an SD Card in PSIO to prevent dust from accumulating in the SD slot, or to put PSIO back in its original box to protect it.

We will not be held responsible for physical damage to your cartridge, nor are we responsible for the condition and/or quality of your PlayStation's Parallel Port.

If your PlayStation has a Modchip installed, PSIO will work fine alongside with it, even with the Switch Board installed.

There is a yellow LED on your PSIO cartridge. This LED will blink heavily whenever the cartridge is busy handling commands. It is not recommended to remove an SD Card whilst the LED is active.

There are no user serviceable parts contained within your PSIO cartridge (EG: fuses or electrolytic capacitors). Unscrewing or attempting opening your cartridge will render your warranty void. Should your PSIO cartridge require repair, please contact us directly and we will assist you.

PSIO uses 7.5V directly from the PlayStation console which is regulated to three other voltages afterwards. It draws a maximum of 174mA at its peak, an average of 168mA and a standby rating of 156mA. The PlayStation power supply can *easily* handle this additional minor current draw with no setbacks.

The plastic case of PSIO is made from ABS plastic which we designed from scratch and was made for us specially. The Parallel Port contains brass pins which were gold-plated and were also custom created by us.

After long periods of use, your PSIO cartridge will get very warm. This is due to the fact that there is a high-speed ARM processor and FPGA inside your PSIO cartridge which are both passively cooled. This means that the heat is contained within your cartridge. This is normal. There are no air vents in your PSIO cartridge as they are simply not needed. The SD Card frame also acts as a heatsink, so do not be alarmed if your SD Card becomes quite warm too. Whilst testing at an ambient temperature of approximately 28 degrees Celsius, the average temperature PSIO will reach internally is approximately 55 degrees Celsius. It is not recommend to use your PSIO Cartridge in a very hot room (EG: 40+ degrees Celsius) since this will raise the internal temperature considerably which *may* cause damage to your SD Card and or PSIO Cartridge.

### [6-2: PlayStation BIOS]

To boot to the standard PlayStation BIOS Menu Screen to access the "Memory Card" and "CD-ROM Player" functions, you can either select from the Menu System options list, "Go to the PlayStation BIOS" or you can physically unplug your PSIO Cartridge and boot up your PlayStation.

Please note that if you boot PSIO without an SD Card, your PlayStation will boot to the 'System Loader' which is also another method of gaining access to the BIOS. If you come across This screen by Error however and the SD Card is inserted, please go back and read section [1-2: SD Card and Menu System].

### [6-3: PAL vs. NTSC]

PAL (Phase Alternating Line) games will run on an NTSC console with PSIO, and NTSC (National Television Standard Committee) games will run on a PAL console with PSIO. However, if you are *not* using RGB directly, a colour modification is required to your PlayStation mainboard. Depending on your PlayStation model, a pin from the GPU must be lifted and its solder pad must either be pulled low (grounded), or pulled high (connected to voltage) to force a PAL60 or NTSC60 picture.

Also note that some PlayStation games use the R3000A (CPU) free running timer as a sync method for audio timing. As an example, playing the NTSC version of “Bust A Groove” on a PAL PlayStation (and vice versa) will cause sync issues.

### [6-4: SCPH-9000/PSone]

Your PSIO cartridge was specifically designed for use only with a PlayStation console that contains a Parallel Port (‘Parallel I/O’). As for the PlayStation consoles that do not have this port, no support is offered at the moment.

### [6-5: Fastboot on System Boot]

PSIO has the potential to skip the PlayStation BIOS boot sequence thus getting you into the Menu System much faster. To enable Fastboot, simply go to the ‘Options’ window by pressing ‘Triangle (△)’ [Options] and then changing the option “Enable Fastboot” to ‘Yes’. Do not forget to save changes by pressing ‘Circle (●)’ [Save] from the ‘Menu System Option’ window or else the PlayStation will not detect that Fastboot is enabled the next time you power on your console.

## [6-6: Multi-Disc]

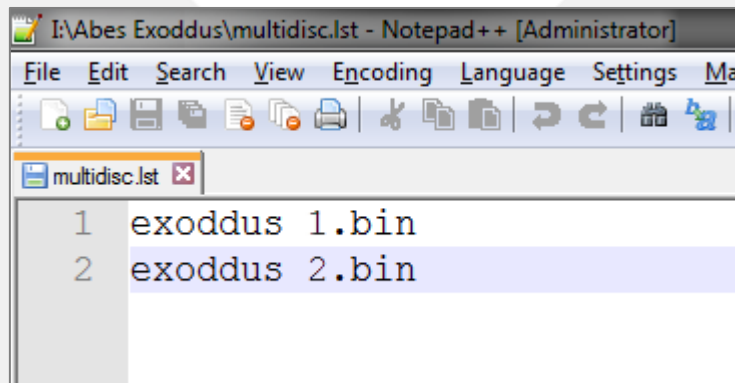
PSIO has the option to support Multi-Disc titles. To enable and use Multi-Disc images, you must create a file in your game directory called “MULTIDISC.LST” (not case sensitive).

IE: “exoddus 1.BIN”, “exoddus 2.BIN” and “MULTIDISC.LST”.

EG:

- SD:\Oddworld - Abes Exoddus\exoddus 1.BIN;
- SD:\Oddworld - Abes Exoddus\exoddus 2.BIN;
- SD:\Oddworld - Abes Exoddus\MULTIDISC.LST;

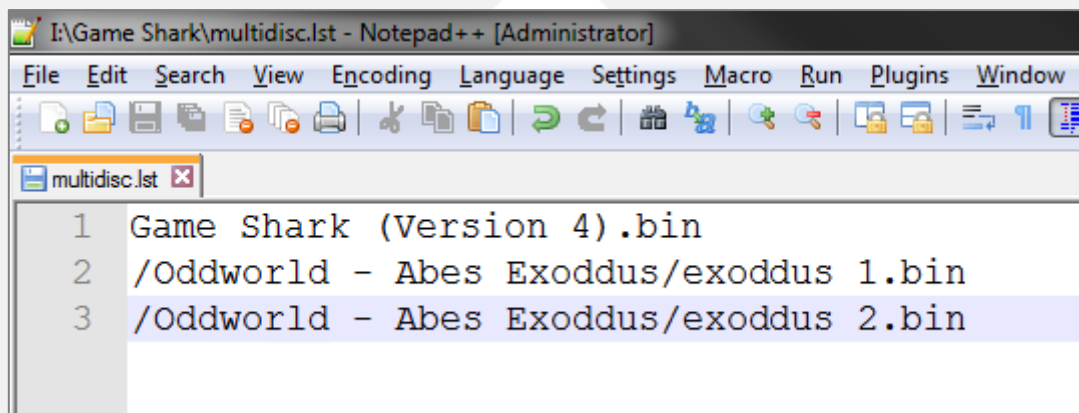
The “MULTIDISC.LST” file must then contain your game images. Each image is defined on a new line. The first defined image is the image that PSIO will boot first. As a note, ensure that there is no ‘return’ on the last line (IE: take notice that there is no line 3 as seen in the image below).



```
I:\Abes Exoddus\multidisc.lst - Notepad++ [Administrator]
File Edit Search View Encoding Language Settings Ma
multidisc.lst x
1 exoddus 1.bin
2 exoddus 2.bin
```

For some advanced redirecting, you may point to the original directory location where you may then pre-define other directory listings from the root of the SD Card to act as Multi-Disc games. In the example below, you can see we have loaded a “Game Shark” image as the first disc (Disc 1). When a disc change event happens (by simply ejecting the SD Card and re-inserting it when the game has been booted), PSIO will swap and use “exoddus 1.BIN” (IE: Disc 2). Whilst this feature isn’t very practical for consumers, it’s great for developers that may need to jump between different versions or builds of their game to load in different data.

To navigate to other directories on the SD Card, simply use a leading forward slash (as seen in our example below) to issue a path from the root.



```
I:\Game Shark\multidisc.lst - Notepad++ [Administrator]
File Edit Search View Encoding Language Settings Macro Run Plugins Window
multidisc.lst x
1 Game Shark (Version 4).bin
2 /Oddworld - Abes Exoddus/exoddus 1.bin
3 /Oddworld - Abes Exoddus/exoddus 2.bin
```



As mentioned above, to actually swap a disc, simply eject the SD Card, wait a second or two, and then re-insert the SD Card. So long as your “MULTIDISC.LST” file is correct, your disc will swap will happen seamlessly.

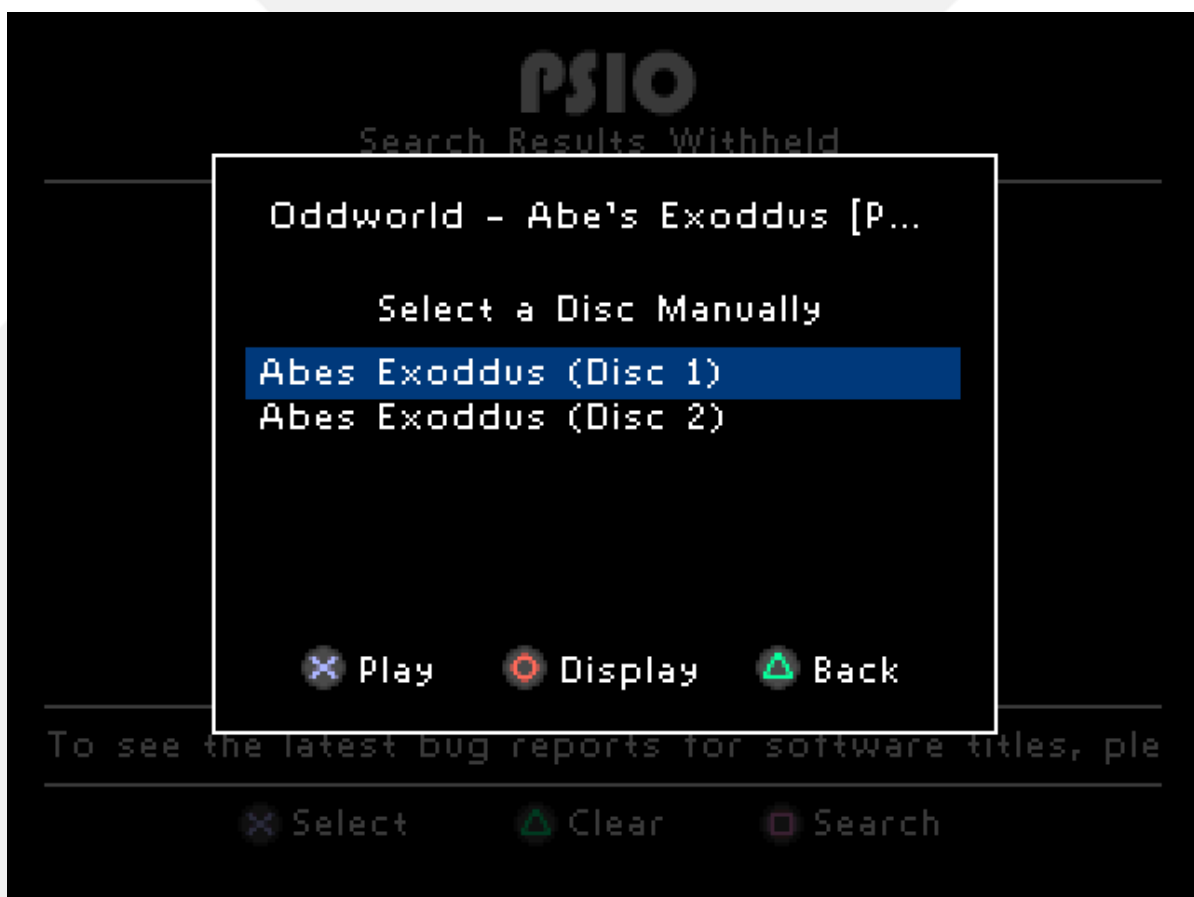
As a sanity check, if the Menu System detects a “MULTIDISC.LST” file, you will have a third option [M-Disc] to cycle through to display the contents of the “MULTIDISC.LST” file (as seen in the image below).

As a note, when using the ‘Systems Console’ with ‘Multi-BIN’ images which are Multi-Disc based, the software will generate the required MULTIDISC.LST file automatically when doing a Batch Conversion (see section [4-1: Creating a CU2 Sheet]).

If for some reason the file refuses to be detected in the Menu System and/or is causing the system to freeze, ensure that a “CR + LF” (line feed + carriage return) exists at the end of the ‘MULTIDISC.LST’ file. This is an advanced technicality, so the details of how to do it will not be explained here. However, to avoid such a problem, the file should be created and saved in the ‘ANSI’ format and not ‘UNICODE’.

When editing a MULTIDISC.LST file, we recommend using the program ‘Notepad++’ for Windows.

The Menu System also gives you the option to select what disc you would like to boot as there is a mini-menu within the ‘M-Disc’ dialog window. Simply highlight the disc you would like to boot and press the ‘Cross (⊗)’ [Play] button. If you have a very long filename, you can hold the ‘Right’ button on your direction pad (d-pad) to scroll (if Analog mode is enabled on your DUAL SHOCK controller, you may also use the left stick to scroll by holding it to the right). This assists in figuring out the disc titles.





## 7-0: Updating and USB:

[7-1: Firmware]

### **DO NOT USE UNKNOWN/NON-GENUINE FIRMWARE(S) ON YOUR PSIO CARTRIDGE**

Your PSIO cartridge has two firmwares and a Menu System, all of which are updatable without any additional cables or dongles. Use the points listed below depending on your situation.

- Please jump to **Section A** if your **ARM Firmware** is newer than **V2.5.4**.
- If you have an **ARM Firmware** less than or equal to **V2.5.4**, jump to **Section B**.
- If your yellow LED is blinking, please contact us (your unit is bricked/damaged).

#### Section A:

As of 2024, we have released a *major* update and overhauled our download system. In order to now get the latest firmware, you simply need to login to your account at <http://psio.cybdyn-systems.com.au/my-account>

If you have purchased your PSIO Cartridge from a wholesaler/distributor, please contact them and request a 'license transfer'. If you have purchased a second-hand PSIO Cartridge, you will need to contact the original owner to transfer ownership to you. If the original owner does not respond, you may contact us and we will assist you further.

Once you have logged into your account, click on the 'Registrations' option from the menu on the left. You will then be shown a list with all of your PSIO Cartridges.

Select from the list the matching serial number of the cartridge you are preparing to update and click on 'Register'. From here, please follow the instructions on the website. If you have any issues, please contact us.

Once registered, the button text will change to 'Update' when a new update is pending for that particular cartridge.

#### Section B:

### **DO NOT PROCEED UNLESS YOUR ARM IS LESS THAN OR EQUAL TO V2.5.4**

As of Menu System V2.6.4 and above, the ARM firmware and the FPGA Firmware are updated internally from the Menu System and no longer required as separate files. However, because the logic for internal updating is not present on the older ARM firmware (prior or equal to V2.5.4), you will need to update it to at least V2.5.5 manually in order to gain the internal updating functionality from the Menu System.

To flash your PSIO Cartridge with the legacy firmwares required in order to let the cartridge automatically update to the latest version via the Menu System, go to <http://psio.cybdyn-systems.com.au/downloads> and get the download called "LEGACY.ZIP".

Next, format your SD Card as FAT32. This is **CRITICAL**. Your SD Card must be FAT32 or the legacy firmware(s) will not re-flash.

Using your computer, extract both of the firmware files (RECOVERY.BIN and UPDATE.FPG) from LEGACY.ZIP to your SD Card root directory. Also be sure to copy the Menu System (MENU.SYS) to the SD Card as well which can be obtained by registering your device.

Next, make sure your PlayStation is turned off. Also ensure that any USB cables are unplugged and your cartridge is not plugged into your computer (the firmware will not flash and your cartridge will not boot if you have it connected via USB).

Insert the SD Card in you PSIO Cartridge and power on your PlayStation. Note that the PlayStation must be powered off and then powered back on to run the re-flashing procedure (pressing the 'Reset' button if it's already powered on will not trigger the update procedure).

After 3-5 seconds, the PlayStation will reboot and attempt to start the Menu System.

**DO NOT POWER OFF YOUR PLAYSTATION ONCE YOU HAVE TURNED IT ON**

Even when the console is displaying a blank screen, it is currently flashing the built in Flash ROM that your PSIO Cartridge contains. This process generally takes a *maximum* of 5 seconds. Turning off your PlayStation within this timeframe whilst re-flashing *may* brick your PSIO cartridge and you will have to contact us for repair assistance.

Once the Menu System boots up, if you have any of the firmware files still present on the SD Card the Menu System will not function until you delete these files (it will actually notify you). Remove the SD Card from your PSIO Cartridge, turn off the PlayStation, insert the SD Card into your computer and delete the ARM and FPGA update files (RECOVERY.BIN and UPDATE.FPG). Leave the MENU.SYS file on your SD Card (do not delete this).

Once you have turned on your PlayStation, wait until the Menu System boots up. If there is a new update contained in the Menu System, it will update your PSIO Cartridge for you and reboot your PlayStation automatically. If you have not finished the registration process, please continue with it. Your PSIO cartridge is now updated to the latest version and should be fully operational.

**USB IS CURRENTLY DISABLED ON MENU SYSTEM V2.7.7 AND UPWARDS UNTIL FURTHER NOTICE**

To use the USB (Universal Serial Bus) communication link function that PSIO offers, simply plug PSIO into any computer running an operating system (OS) greater than or equal to Windows 7.

To load an image via USB, first be sure that your PlayStation 1 is off. You may then attach a USB Type-B mini cable to your cartridge and turn the PlayStation on. USB mode will then be initialised. On your computer, you will see a notification saying that a “PSIO (Cybdyn Systems) USB Device” is being installed. During this period, the driver is automatically being installed for you using the generic “DISK.SYS”, “PARTMGR.SYS” and “PSSNAP.SYS” drivers which come with Windows.

Please note, that your PlayStation will show a black screen whilst a USB connection is present, and your reset button will no longer function. This is normal. In order to know whether you’re in USB mode or not, PSIO will blink its activity LED 3 times rapidly, and on the third blink the LED will stay on for a second or so and then turn off. When the LED turns off, a connection between PSIO and your computer has been established, and as such, PSIO is in USB standby mode waiting to receive data from your PC.

Whilst PSIO is still connected to your computer by USB and in standby mode, your computer will show “PSIO” mounted under ‘My Computer’ as a physical drive with corrupted looking files and folders. This is because the ARM microcontroller that PSIO contains has a file system embedded within it which we use for proprietary use. Please do not attempt to copy files to this area, nor attempt to format it. Whilst Windows will deny you from actually carrying out these operations, attempts at doing so may brick or damage your PSIO cartridge and in which case, it will need to be sent back to us for repair.

Next, to transmit data (such as a “\*.BIN”, “\*.ISO” or “\*.IMG” software image), load up the “Systems Console” program (available as a download from the PSIO website). The program will automatically attempt to detect your PSIO Cartridge for you. Once auto-detection has been completed and your cartridge has been mounted, you may now load an image by selecting ‘File’, and then ‘Open and Run Image’.

Note that running images directly will not provide XA/CDDA audio. To enable XA/CDDA audio, you must open and mount the Menu System. To do this, whilst the Menu System is running as a USB image, you must un-mount it once it has booted. This can be done by simply clicking ‘USB’ and then ‘Open the PlayStation Door...’. Now you can re-mount your new desired software image by going to ‘File’ and then ‘Open and Run Image’ again. Note that the Menu System will always show “PlayStation (USB) CD-ROM” as the mounted image name, even when you re-mount with a different image.

## 8-0: Error Codes & Warnings:

### [8-1: PSIO Cartridge]

#### **Error code: 80000SB0:**

There is no Switch Board installed or the Switch Board has not been installed incorrectly. Please check that one has been installed and that the soldering and trace cuts are correct.

#### **Miscellaneous Codes and Warnings:**

- An error screen will show saying “NO MENU SYSTEM” if an SD Card is not present or the ‘MENU.SYS’ file is not present on your SD Cards root directory. Note that your PSIO Cartridge will also do this if your parallel port in your PlayStation is dirty or corroded.
- If you see error code “AFEHC05L” and the text “INVALID SYSTEM REQUIREMENTS. SOFTWARE TERMINATED.” on your screen, this means your PSIO Cartridge has failed to authenticate and is not running on genuine PlayStation hardware. This error may also happen because you’re using an old ARM firmware on a newer Menu System.
- If you are running non-genuine firmware that was not downloaded from the official PSIO website for your cartridge, you will see a warning window with a countdown timer. This cannot be bypassed. Make sure you download genuine firmware as soon as possible by using your Order ID, Email Address and Serial Number.

### [8-2: Menu System]

#### **Error code: 80000014:**

There is no controller in Port 1.  
Please re-insert a PlayStation controller.

#### **Error code: 80000A14:**

There is no controller in Port 1, Multi-Tap Port A.  
Please re-insert a PlayStation controller.

#### **Error code: 80000F14:**

The SCPH-1180 in 'Green Mode' (also known as 'Flight Stick Mode') isn't supported. Please change controller modes by pressing the 'ANALOG' button on your controller or replace the controller with a standard control pad or DUAL SHOCK controller.

#### **Error code: 80000G14:**

The Menu System failed to find a PlayStation Gun (EG: NAMCO G-Con45, Konami Justifier and etcetera). Please re-insert either the Lightgun or a PlayStation controller directly into Port 1.

#### **Error code: 80000M14:**

The Menu System does not support the PlayStation Mouse.  
Please re-insert a PlayStation controller.

#### **Error code: 80000P14:**

The controller in Port 1, Multi-Tap Port A is not supported. Please remove it and use a supported PlayStation controller.

**Error code: 80000013:**

A different Menu System version was detected on the SD Card. Ensure that the SD Card you recently inserted into your PSIO cartridge has the current matching Menu System version. To check versions, insert your old card and open the Options menu by pressing 'Triangle (△)' [Options], scrolling down in the "PSIO Menu System Options" list to "System Information" and pressing 'Cross (×)' [Select] to see the string "Menu System: V\*. \* Build \*\*".

**Error code: 80000012:**

Too many files were found on your Secure Digital (SD) Card. Remove the card from PSIO, insert it into your computer and delete some files. You must keep the amount under 1,000 folders in total, including the files in the root directory required for PSIO to boot correctly (IE: "MENU.SYS"). Also be sure to read question 16 in section [9-1].

**Error code: 80000010:**

You need to manually update your ARM Firmware. Please go to the PSIO website and download the ARM Firmware update and apply it to your PSIO Cartridge. Please read section [7-1: Firmware] for more information requiring this issue.

**Error code: 80000011:**

No CD-ROM was detected in the PlayStation drive.  
Open the door, insert a PlayStation format disc and close the door.

**Error code: 80000007:**

The Flash ROM inside your PSIO cartridge has become corrupted. For security reasons and to keep the integrity of PSIO safe, we will not continue to boot your cartridge. Please contact us for further assistance.

**Error code: 80000005:**

No folders were found on your Secure Digital (SD) Card. Please place your PlayStation format game images within a self-contained directory and re-insert your SD Card to continue.

**Error code: 80000004:**

The Menu System has not passed validation. If you continue to see this error even after restarting your PlayStation, please contact us directly.

**Error code: 80000006:**

Contact us for further information from the email displayed on your TV screen.

**Error code: 80000001:**

The Secure Digital (SD) Card has been removed from your PSIO cartridge. Please re-insert an SD Card that contains PlayStation format game images contained within folders to continue.

**Error code: 80000FB1:**

The Secure Digital (SD) Card has been removed from your PSIO cartridge during the initial setup stage. Please re-insert the same card that contains the same PSIO Menu System to continue.

**Error code: 800000U1:**

The USB image which was previously mounted by the 'Systems Console' program has been un-mounted and or the PlayStation CD-ROM drive door has been opened (by simulation). Please re-mount an image to continue.

**Error code: 800000C1:**

There is no disc in the CD-ROM drive. Please open the drive door on your console, insert a PlayStation format CD-ROM and close the drive door to continue.

**Error code: 800000D1:**

No PlayStation formatted CD-ROM was detected. To continue loading, please insert a CD-ROM and close the drive door.

**Error code: 80000015:**

The detected ARM Firmware on your PSIO cartridge is not designed for the Menu System currently running. Please update your PSIO Menu System or your ARM firmware to the version specified on your screen in order to proceed.

**Error code: 80000016:**

No Menu System has been detected on the SD Card re-inserted. Please copy to the SD Card the same version of the currently running Menu System to continue.

**Error code: 80000017:**

One of the update files is still present on your SD Card. Please remove the card, delete the corresponding update file (it will tell you what file is causing the problem) and re-insert your SD Card to continue.

**Error code: 80000018:**

The maximum disc limit has been reached in the MULTIDISC.LST file. Only six (6) images are allowed.

**[8-3: System Loader]**

If you power on your PlayStation console without an SD Card in your PSIO Cartridge, the 'System Loader' will boot which will show the PSIO logo with the text "NO MENU SYSTEM". To fix this, simply insert an SD Card with the "MENU.SYS" file and press the 'RESET' button on your PlayStation console.

## 9-0: Help and Troubleshooting:

### [9-1: Generic Questions]

**Q1)** I was trying to play my game, and it froze! Why does this happen?

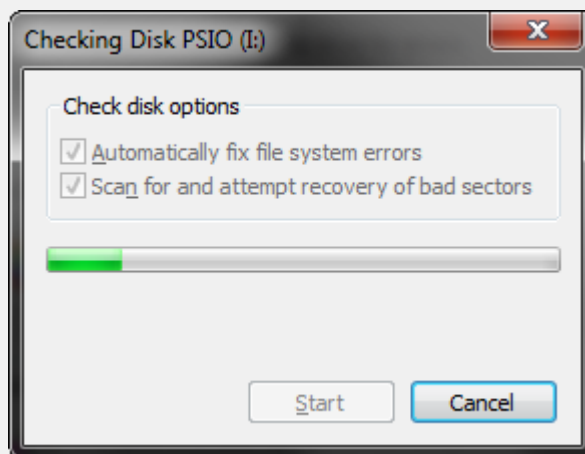
**A1)** There are many possibilities why your game may have locked up. One important factor is to ensure that your image has been dumped correctly, and is in fact a direct one-to-one copy from the original CD-ROM. One major problem with most titles is the fact that Sony added copy protection called LibCrypt. If one bit is missing or damaged, the game will not boot. Please read the 'LibCrypt' section below.

You should also ensure that all your firmwares are up to date within your PSIO cartridge. More about firmwares may be found under **[7-1: Firmwares]**.

Also take caution and notice in ensuring that your PSIO cartridge has been inserted firmly into the PlayStation Parallel Port ('Parallel I/O'). A corroded or damaged Parallel Port will cause games to lockup and crash if the data connection is not stable, especially if the cartridge is bumped whilst playing. If you suspect your Parallel Port is corroded or damaged (this can be done by visually inspecting it), try using PSIO on a PlayStation with a cleaner or less susceptible damaged Parallel Port.

One consideration to take care is that the SD Card may become fragmented. Now, whilst our programming does handle fragmentation for the SD Card, it is always best to avoid this by safely ejecting your SD Card before removing it from your computer. You can run a 'Check Disk' under Windows to scan and fix damaged sectors. Please be patient as the scan usually takes ~25 minutes on a 32GB SD Card. Do not cancel the scan once you have started it, as cancelling will corrupt the card entirely and you will have to copy your games again manually.

If you find your game still freezes, please try a different EXTDSP mode. Otherwise, submit your problem to <http://psio.cybdyn-systems.com.au/problem> and we will assess it as soon as possible.



**Q2)** What is LibCrypt and why is it making my game not work?

**A2)** LibCrypt was Sony's later method of adding copy protection to prevent piracy. PSIO does not support LibCrypt titles at this time. However, patches are available for most if not all games with LibCrypt. Please see <https://psio.cybdyn-systems.com.au/help/> and look for the 'LibCrypt Patches' section.

**Q3)** Does having a 'Colour Modification' or 'Modchip' installed cause any problems with PSIO?

**A3)** No. Even with the Switch Board is installed, it will not cause any problems.

**Q4)** How do I know whether my PlayStation game is a Multi-Disc title?

**A4)** Please see [here](#).

**Q5)** Why does my PSIO cartridge get warm after a few hours of playing?

**A5)** Please see section [6-1].

**Q6)** When I took my SD Card out it was very hot!

**A6)** Please see section [6-1].

**Q7)** Can I use the 'Game Shark' image like the Multi-Disc demonstration shows?

**A7)** You may, but the 'Game Shark' image *may* overwrite the K1 register which will destroy the XA and CDDA audio channels which are part of the EXTDSP logic. Cheats may also adversely affect PSIO which can result in games crashing.

**Q8)** When I select my game, I get a message saying "No Image Found".

**A8)** This happens when no image exists in the directory you've created. Make sure you have a BIN, IMG or ISO file in the directory you're trying to access and try again. It can also mean that the filename you're trying to mount is greater than 60 chars, or you may have a corrupt SD Card. Please perform a 'Check Disk' as mentioned in Q1.

**Q9)** When I select my game, I get a message saying "High Fragmentation!".

**A9)** This happens when your SD Card is in a fragmented state. To fix it, you will have to format your SD Card and re-copy the software image you are trying to boot again. Otherwise, try copying the file again whilst leaving the other file and renaming the extension to something like your initials to help skip this particular sector on your SD Card.

**Q10)** When I begin the initial PSIO setup and select my desired video mode, my PlayStation crashes!

**A10)** This happens on a very rare type of PlayStation mainboard model. It is due to the video you have selected not being supported at all and the system actually crashes because of it. To fix it, reboot your PlayStation and select another video mode. Please note that your console will also crash if you change video modes from the Menu System or if you boot a software title that is hard-coded to use that video mode.

**Q11)** Why isn't the 'Burn-In Timer' triggering?

**A11)** An error might be displaying or the controller is pressing a button which is not allowing the timer logic to trip.

**Q12)** Should I care if my folders/file are flagged as 'Hidden', 'Archive' or 'Read-Only'?

**A12)** No. All files will display and be detected no matter what their flag state is.

**Q13)** Do I need a working CD-ROM drive for PSIO to function?

**A13)** No. You don't need a functioning CD-ROM drive. You can even remove the drive if you would like.



**Q14)** Why is my game in black and white?

**A14)** If you play a PAL game on an NTSC PlayStation (and vice-versa), the colour carrier signal may be missing if you play via composite video. Instead, please use RGB out or colour modify your PlayStation mainboard. Note that the 'Colour Modification' will require a TV which supports PAL50 and/or PAL60.

**Q15)** Does PSIO support CloneCD (\*.CCD) or Sub Information Track Data (\*.SBI) files?

**A15)** Not at the moment, so LibCrypt patches must be used in the meantime.

**Q16)** Why do I get error code 80000012 when I have the exact amount that's required?

**A16)** Ensure that you have checked your SD Card for any hidden or system protected files and/or directories.

**Q17)** Wait, I have more questions!

**A17)** Please see our FAQ on our website, or send us a message via our website if we have not answered one of your questions.

## [9-2: General]

If you cannot find your problem listed below, or if you have any other issues, queries or concerns with your PSIO cartridge, please let us know directly on our website and we will assist you further.

### **Problem A**

When I select my software image, nothing happens.

### **Solution A**

Ensure that your software filename does not exceed 60 characters.

---

### **Problem B**

When I plug in my PSIO Cartridge it boots to the PlayStation BIOS menu.

### **Solution B**

Make sure that you have installed the Switch Board correctly and that you have the "MENU.SYS" file in the root of your exFAT or FAT32 formatted SD Card. Also ensure that your PlayStation's Parallel Port (Parallel I/O) is not corroded nor damaged by visually inspecting it.

---

### **Problem C**

I can't boot my original games from the CD-ROM drive!

### **Solution C**

Ensure that the Switch Board is properly installed.  
Also check that your PlayStation laser is not damaged and is functional.

---

### **Problem D**

My software images are not playing any audio. I don't hear any music or background audio.

### **Solution D**

Many software images use "Compact Disc Digital Audio" (CDDA). To make CDDA work, please see section [4-0].

---

### **Problem E**

My PlayStation just boots to the white Sony BIOS screen and does absolutely nothing.

### **Solution E**

Read **Problem B** first.

Again, ensure that you have installed the Switch Board correctly (this is the number one cause of problems related to boot issues).

Try using a different SD Card (we do not recommend using Micro SD Cards with adapters as they cause issues). Also make sure your SD Card is formatted correctly (as explained above in **Problem B**).

Your PSIO Cartridge may be bricked. Try performing a recovery as explained in section **[7-1: Firmware]**.

## **10-0: Development Usage:**

[10-1: PlayStation Programming with PSIO]

**The libraries for specific use with PSIO are currently not released as they are in development**

## **11-0: Memory Card Manager:**

[11-1: Using the Memory Card Manager]

This program offers the ability to manage saves for your Memory Cards. This software is currently in development but is quite functional and offers assistance with MemCard Pro devices.

The current version currently cannot copy to/from the PSIO SD Card.

END OF DOCUMENT