

BUILD THE LEGENDARY

H.M.S.

BOUNTY

ADMIRALTY MODEL

PACK 03



BUILD THE LEGENDARY
H.M.S.
BOUNTY

ADMIRALTY MODEL

PHASE

PAGE

18	Shipyard 03	59
19	Culverin 03	66
20	Theory - Mitred corner	67
21	Frame 5	75
22	Frame 6	77
23	Frame I	79
24	Frame L	83
25	Hawse Pieces 01	87

Design and production by Incipit srl

Assembly guide edited by Milanoedit srl - www.milanoedit.com

Published in Italy by De Agostini Publishing Italia S.p.A., 28100 Novara, Via G. da Verrazano 15

All rights reserved © 2020.

UNSUITABLE FOR CHILDREN UNDER 14. THE PRODUCT IS NOT A TOY
AND MUST BE USED UNDER ADULT SUPERVISION.

PARTS MAY BE DIFFERENT FROM THE PICTURED ONES

DE AGOSTINI
MODELSPACE™
www.model-space.com

ASSEMBLY INSTRUCTIONS

PACK 03

Shipyard Base:
Board MDF 3-07
Board MDF 3-08
Board MDF 3-09

Oarlocks:
wooden plate 3-05
wooden plate 3-06

Frames:
wooden plate 3-01
wooden plate 3-02
wooden plate 3-03
wooden plate 3-04

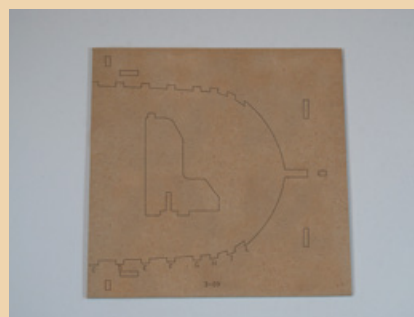
2 culverins
2 forks



3-07



3-08



3-09



3-06



3-01



3-02



3-05



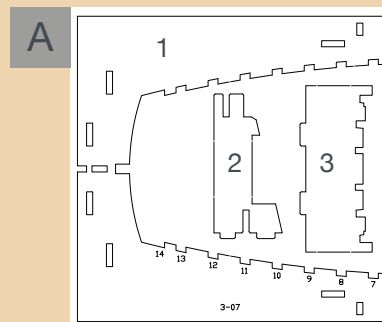
3-03



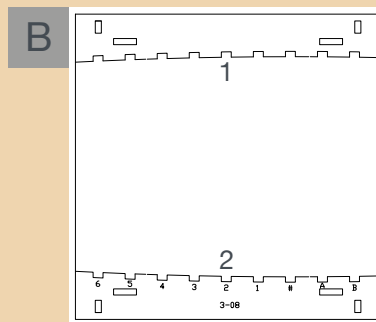
3-04

PHASE 18

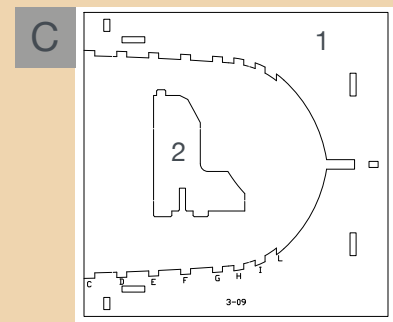
SHIPYARD 03



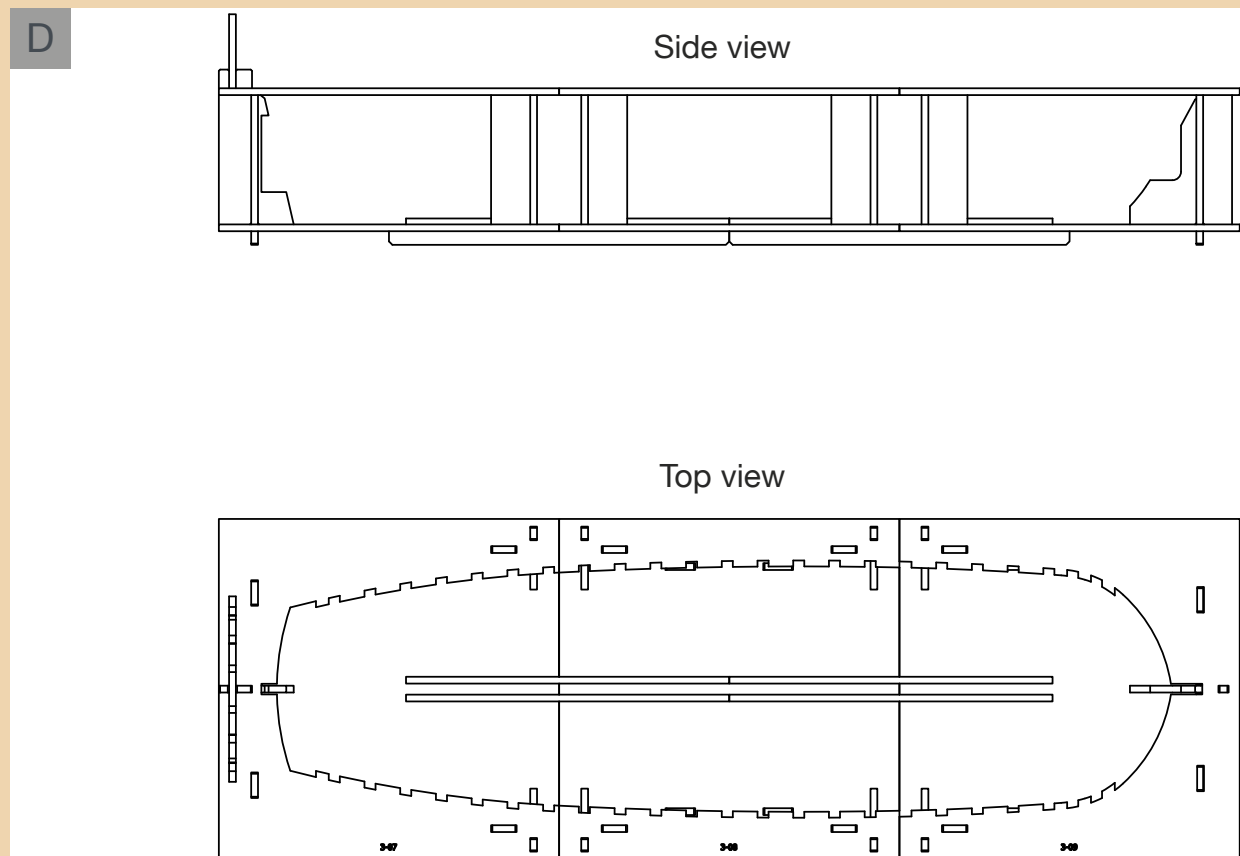
A Board 3-07



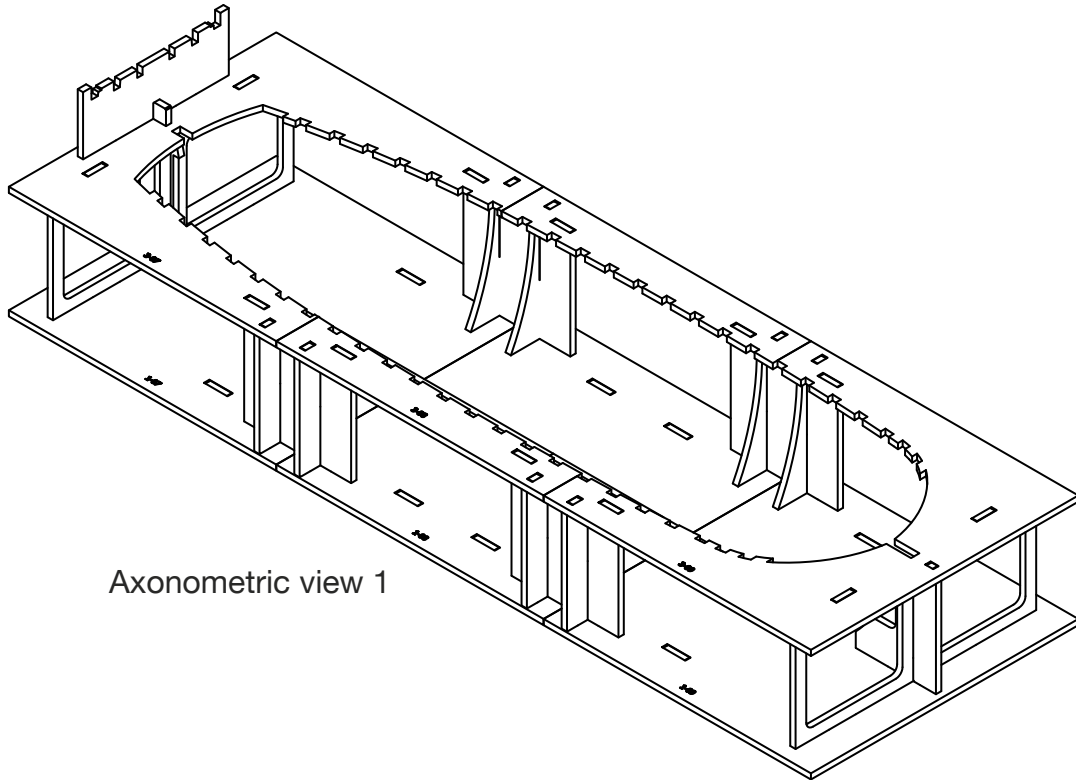
B Board 3-08



C Board 3-09



E

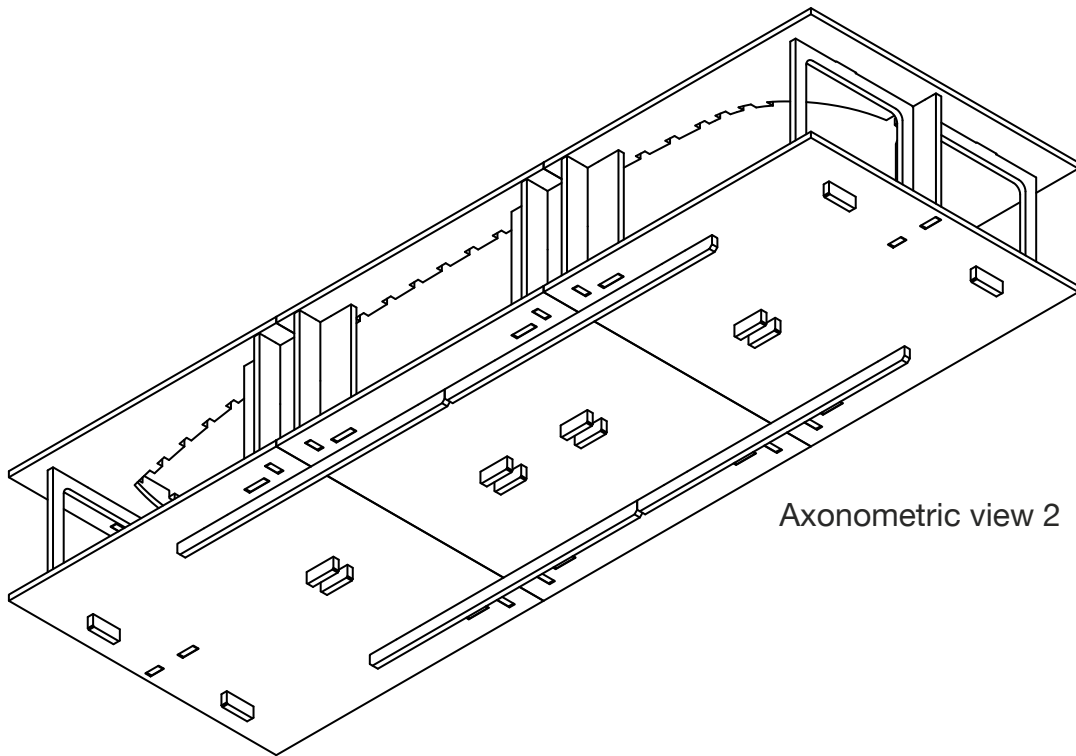


Axonometric view 1

E

Shipyard - axonometric view 1

F

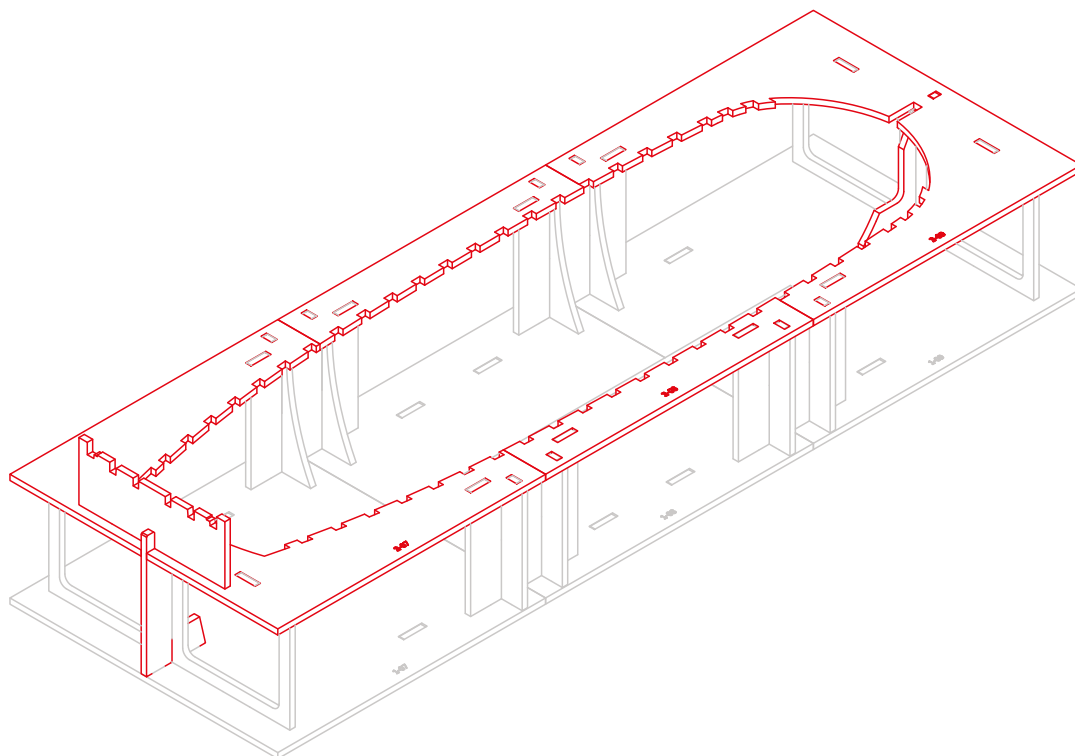


Axonometric view 2

F

Shipyard - axonometric view 2

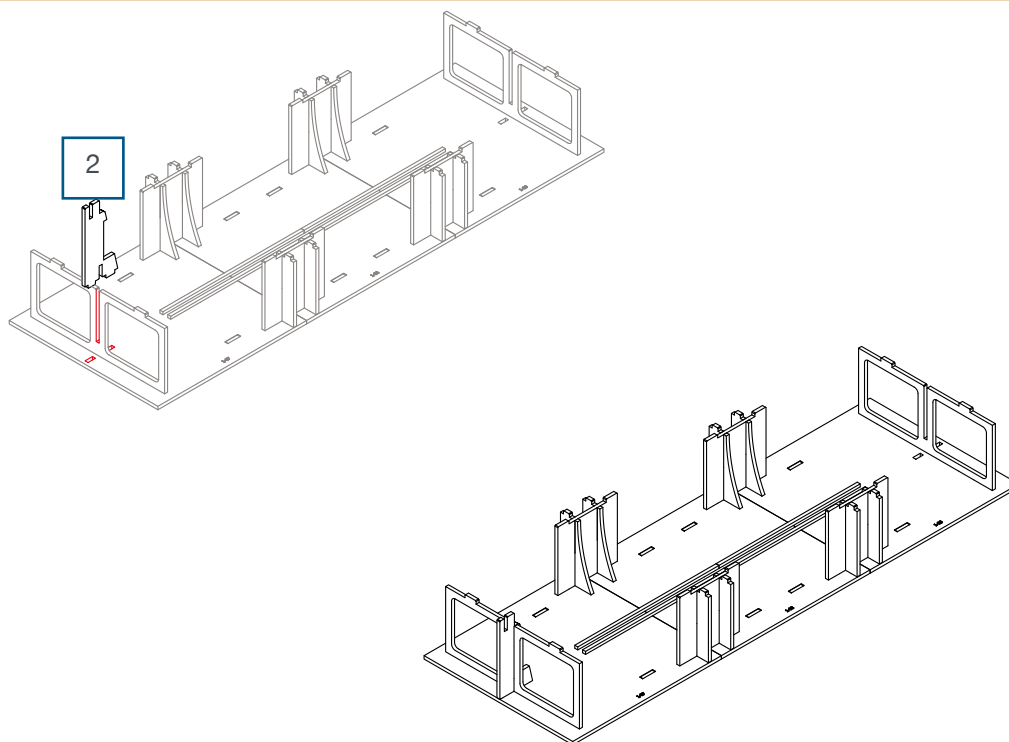
1



1

The parts highlighted in red are contained in Pack 3 (plates 3-07, 3-08 and 3-09).

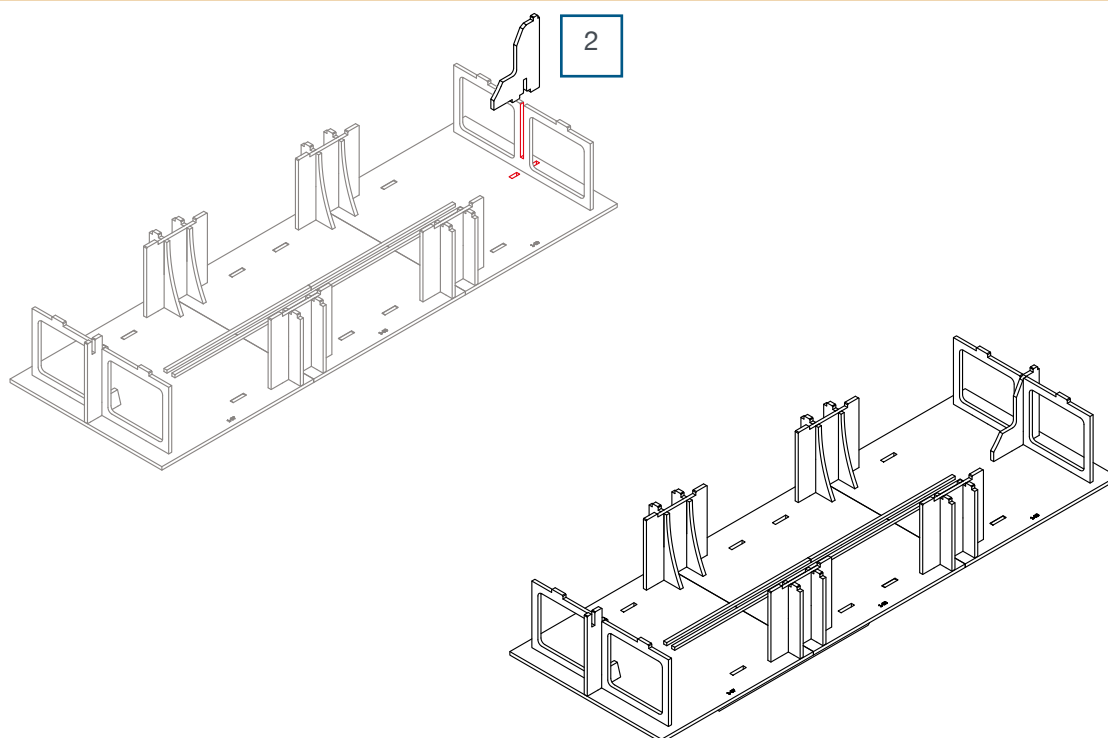
2



2

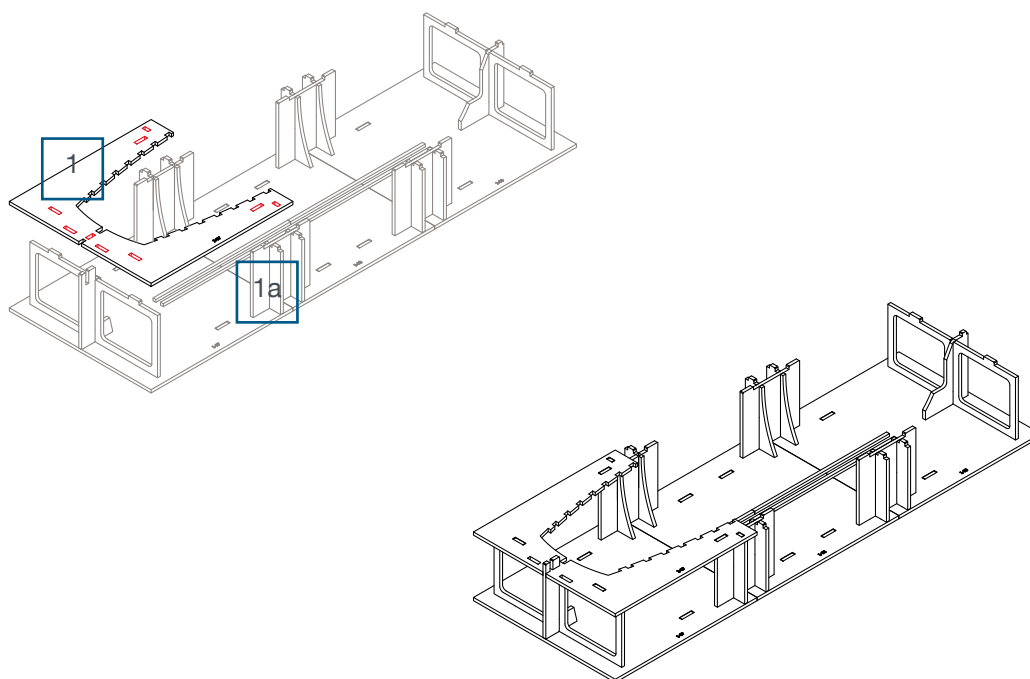
Remove piece 2 from plate 3-07 and glue it to the shipyard joints, applying glue on the parts highlighted in red..

3



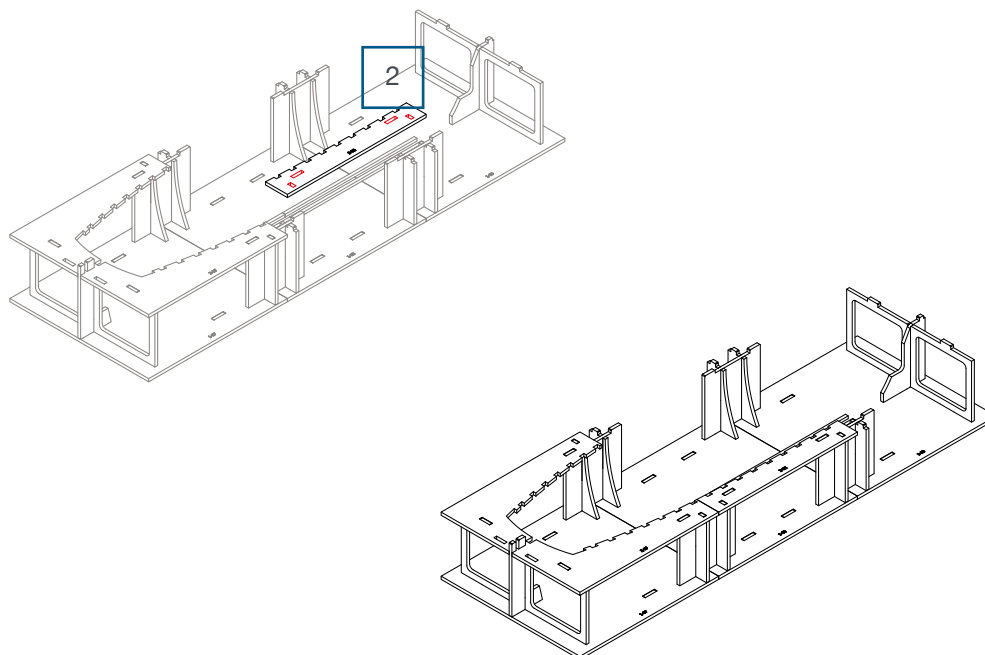
3 Remove piece 2 from plate 3-09 and glue it to the shipyard joints, applying glue on the parts highlighted in red.

4



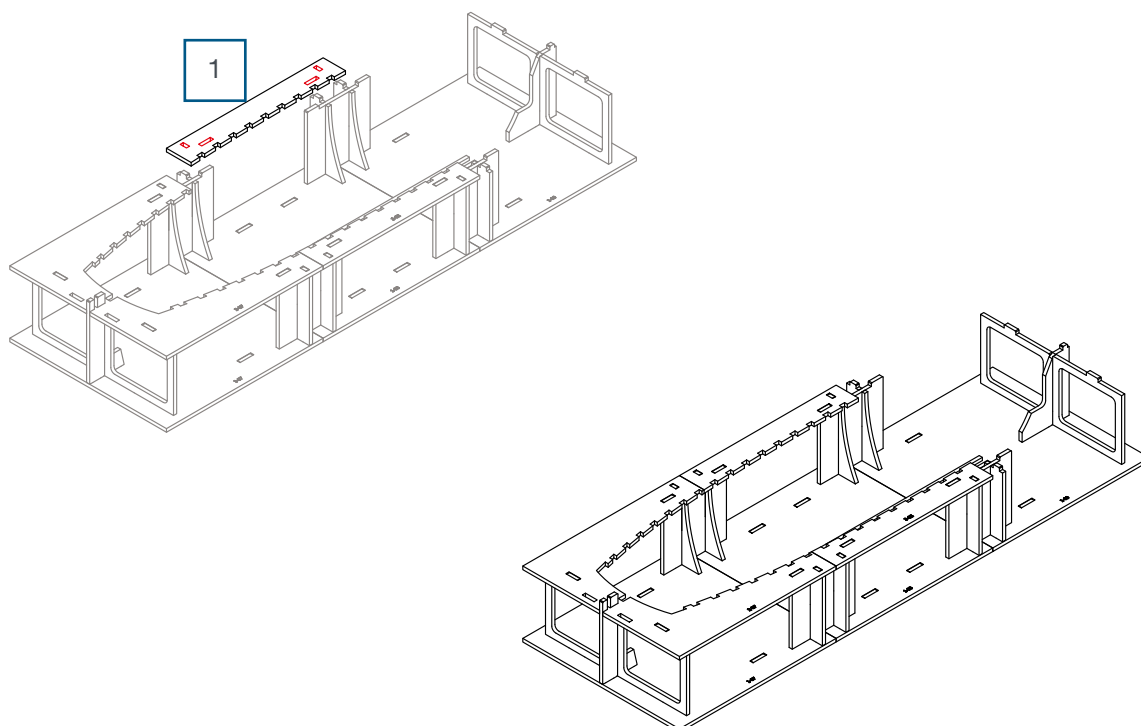
4 Remove piece 1 from plate 3-07 and glue it applying glue on the parts highlighted in red..

5



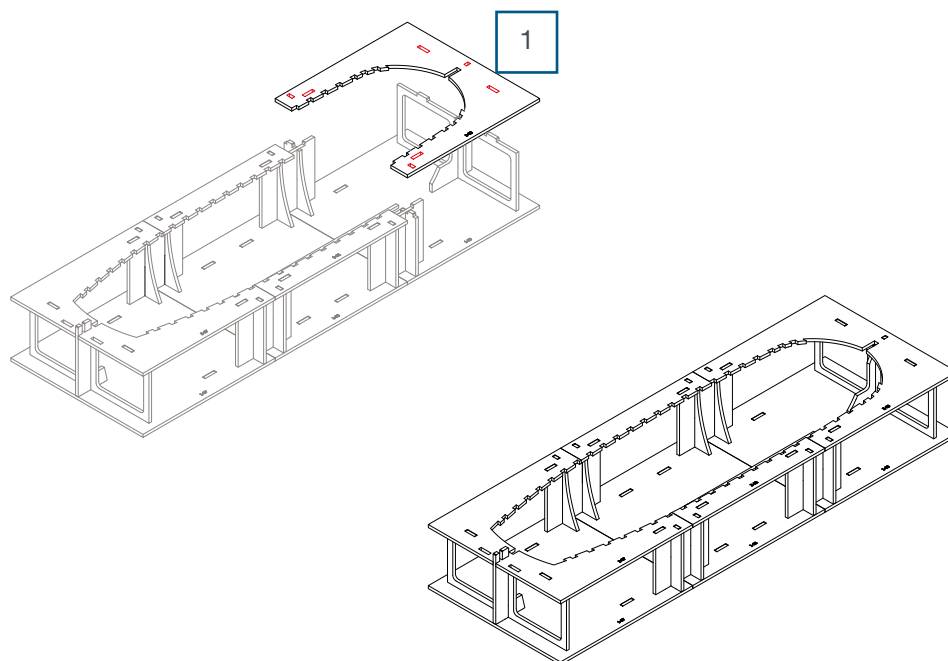
- 5 Remove piece 2 from plate 3-08 and glue it to the shipyard joints, applying glue on the parts highlighted in red.

6



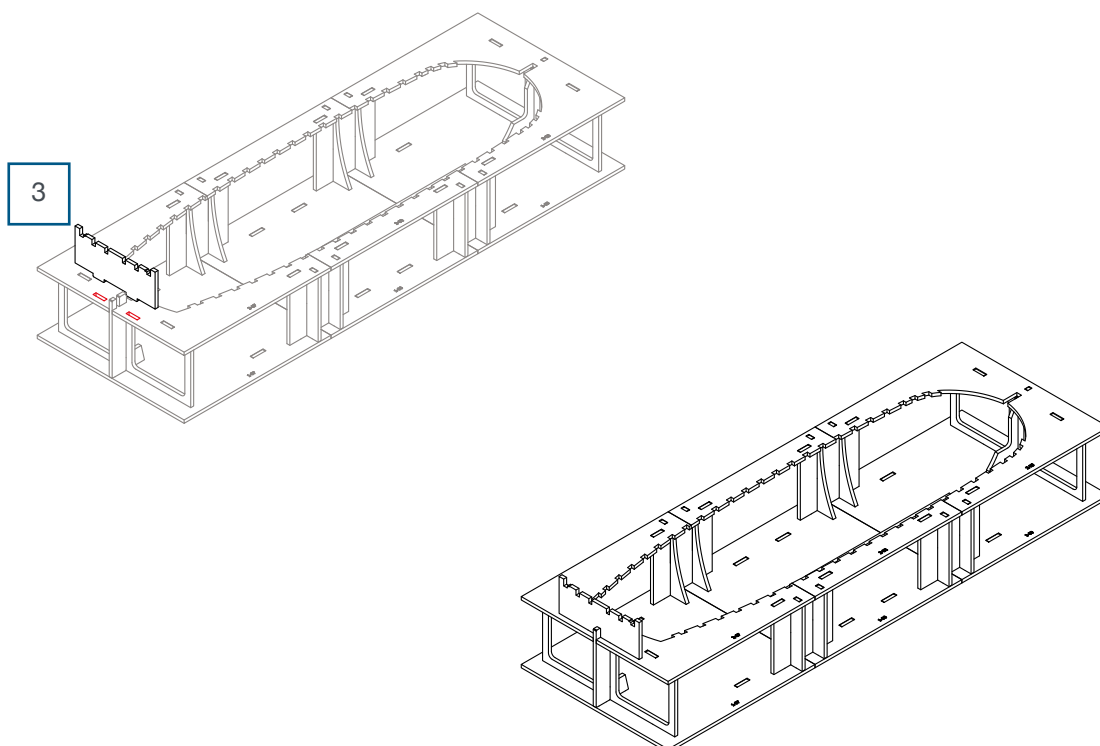
- 6 Remove piece 1 from plate 3-08 and glue it to the shipyard joints, applying glue on the parts highlighted in red.

7



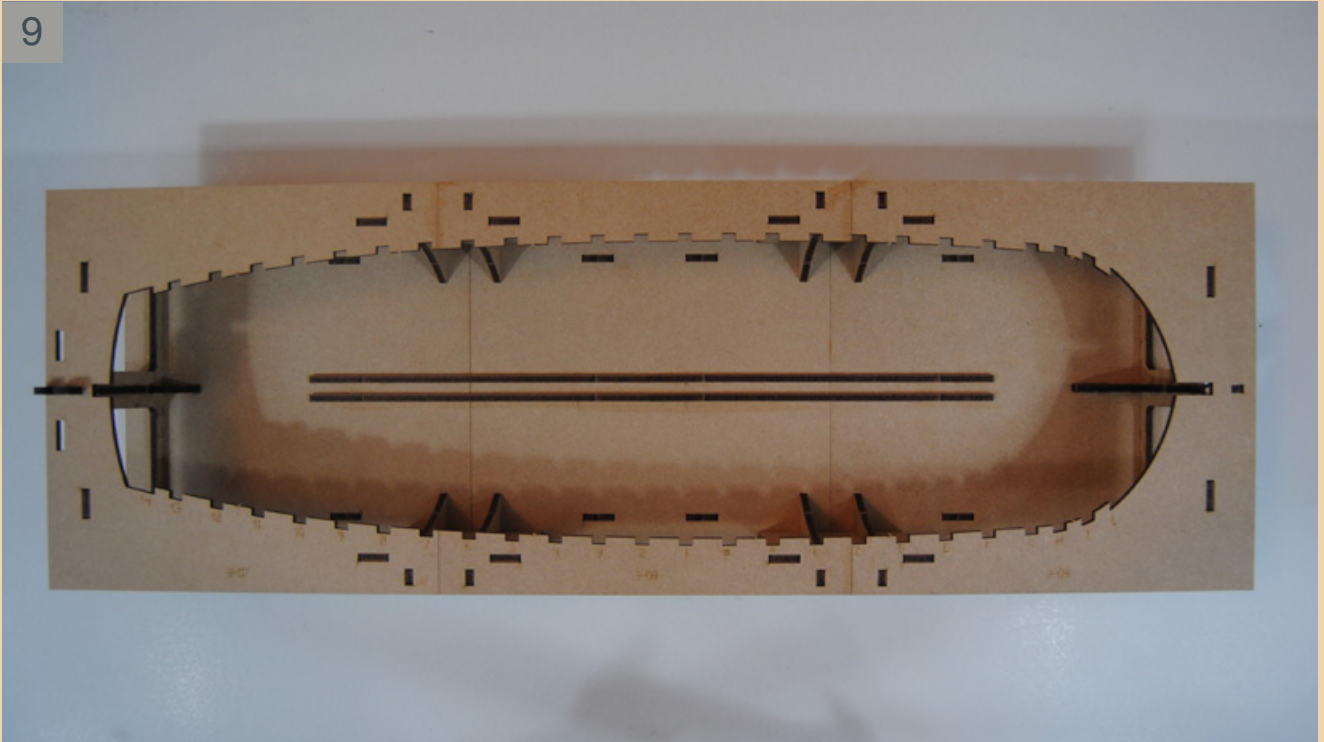
- 7 Remove piece 3 from plate 3-07 and glue it to the shipyard joints, applying glue on the parts highlighted in red.

8



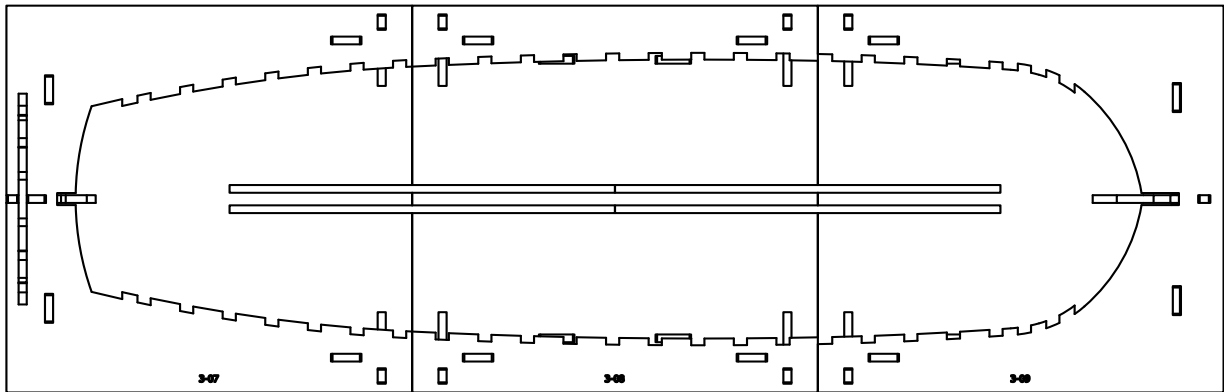
- 8 Remove piece 1 from plate 3-09 and glue it to the shipyard joints, applying glue on the parts highlighted in red.

9



9 The completed shipyard (top view).

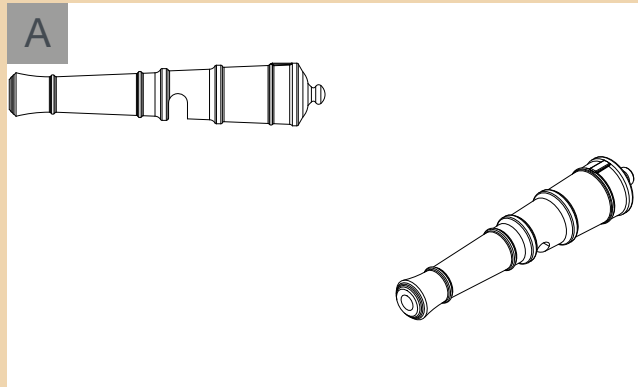
10



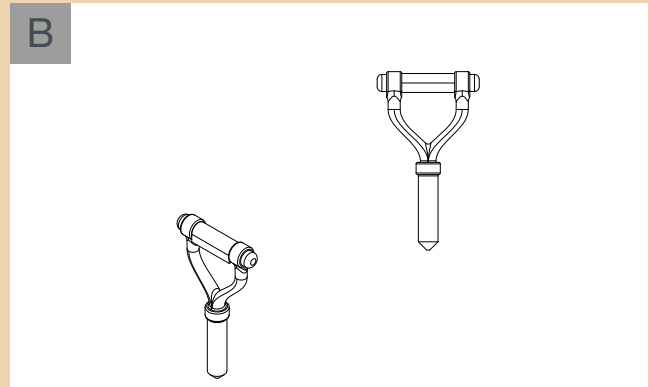
10 Picture of the completed shipyard (top view).

PHASE 19

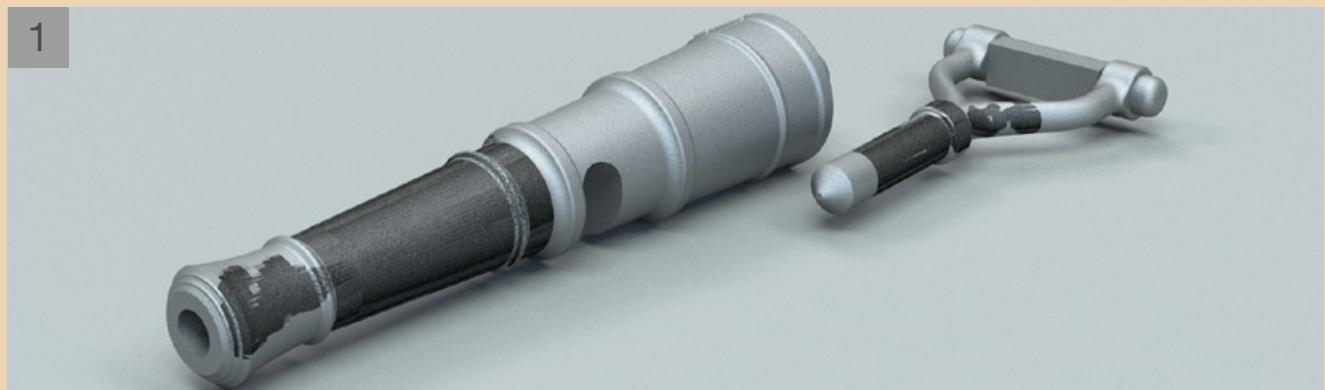
CULVERIN 03



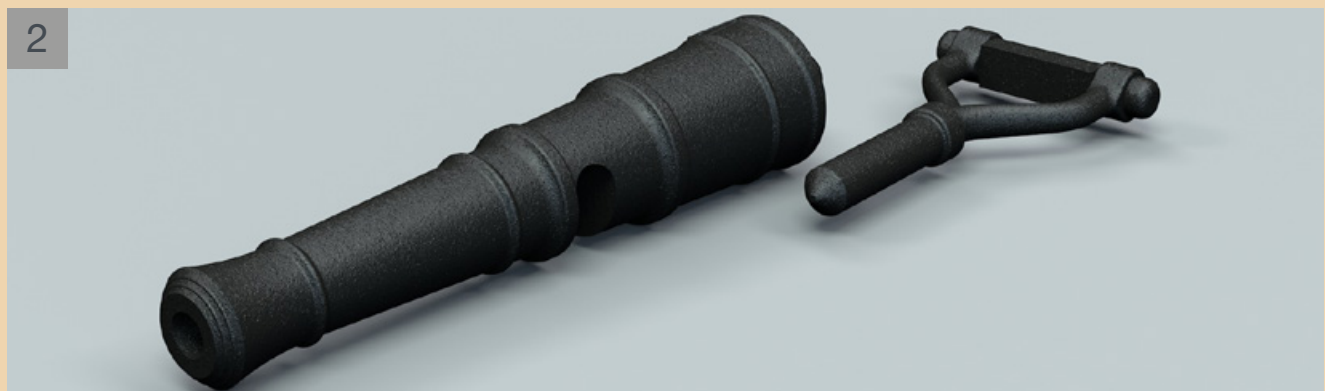
A Side and axonometric view of the the half-pound culverin.



B Side and axonometric view of the fork of the half-pound culverin.



1 Paint the culverin and the fork in Gun Metal.



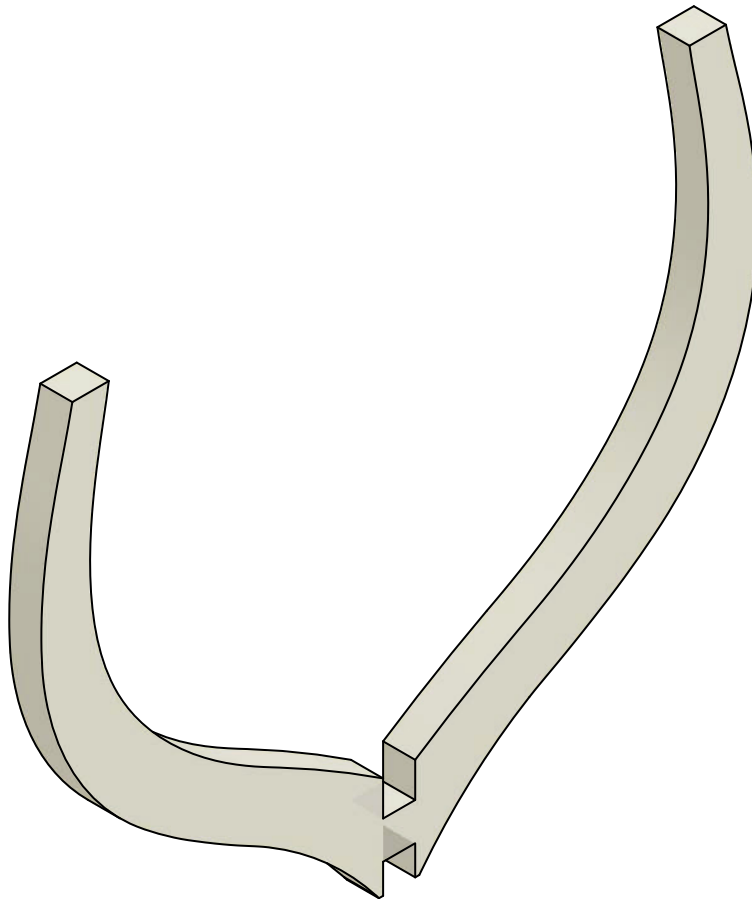
2 The culverin and the fork painted. Do not assemble the culverin and the fork yet: this operation will be carried out later. Keep the two pieces in a safe placeso they won't get lost .

PHASE 20

THEORY - MITRED CORNER

The mitred corner allows plating, which lays on the bow and stern frames, to fit perfectly. To carry out the mitred corner, a wooden section of each frame is to be removed from the top to the bottom end. According to the length of the model, the frames at the centre of the ship can make an exception as they often do not have a mitred corner. The frames most involved in the mitred corner are the bow and stern ones, where plating has more emphasized bends.

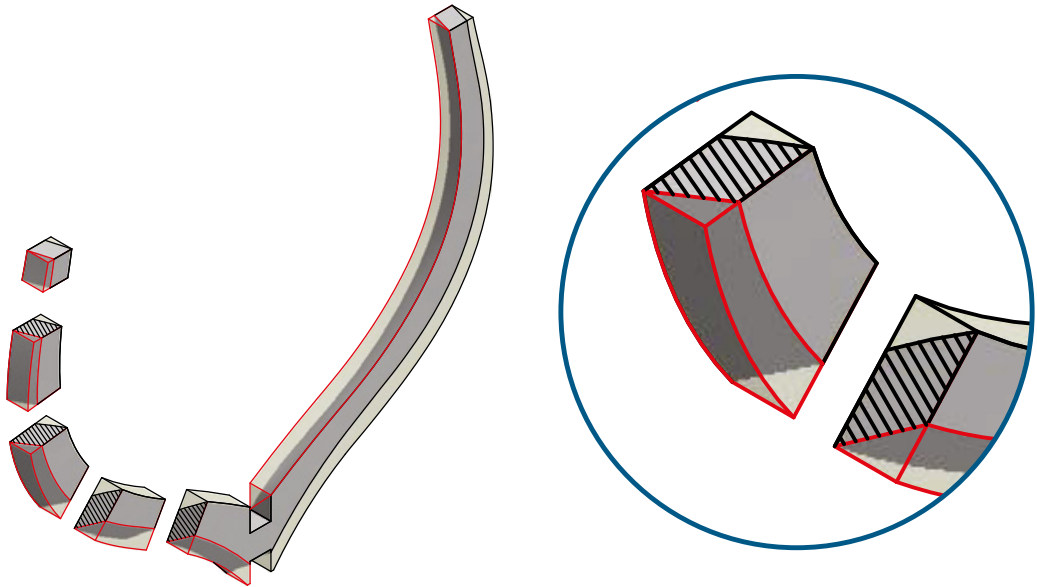
A



A

Picture of the frame without mitred corner.

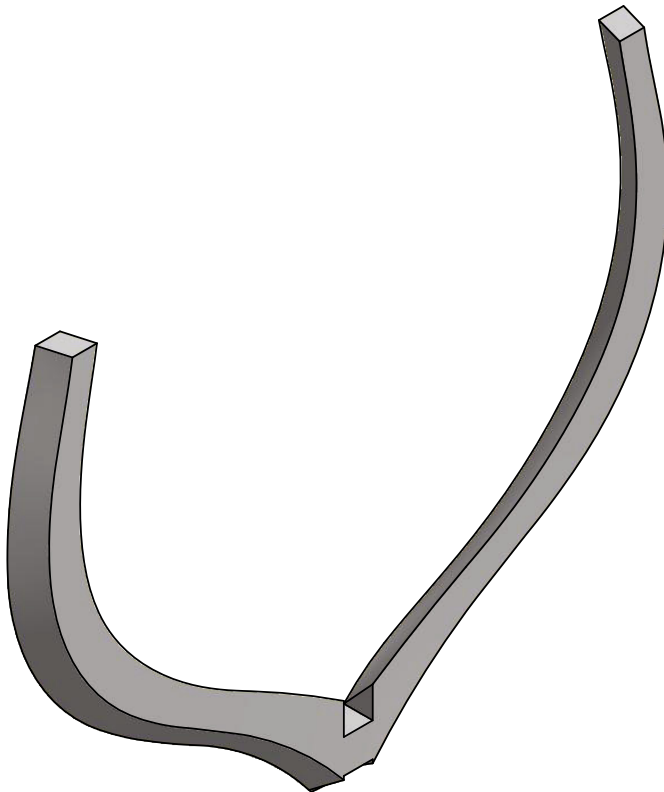
B



B

Picture of the section to be removed from the frame to make the mitred corner. The section marked in red is the part to be removed.

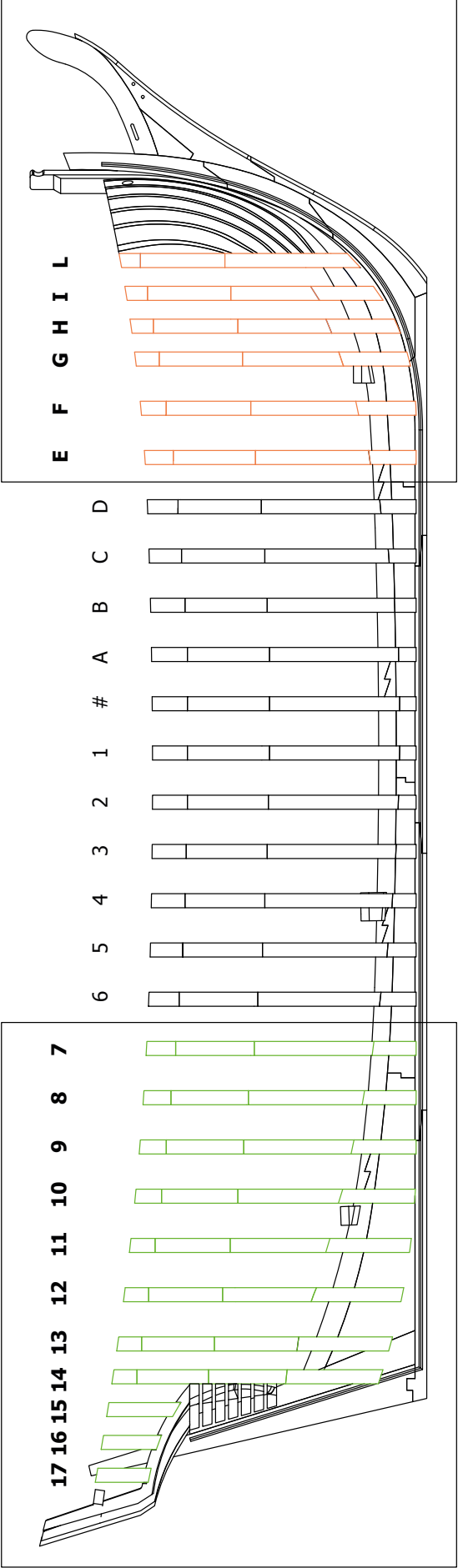
C



C

Picture of the frame with the mitred corner.

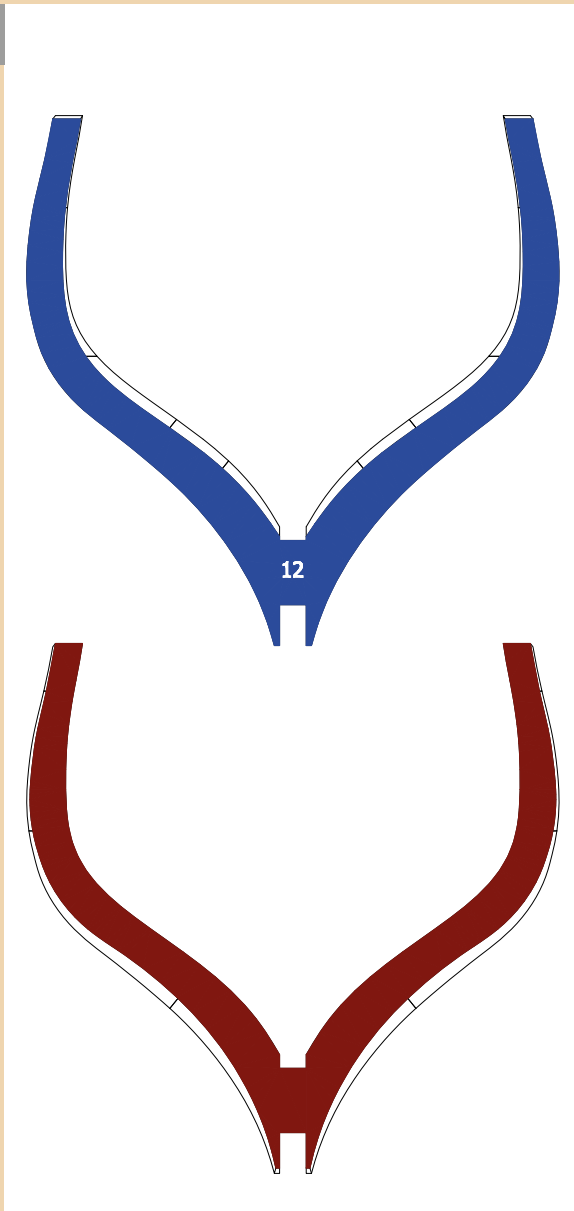
A



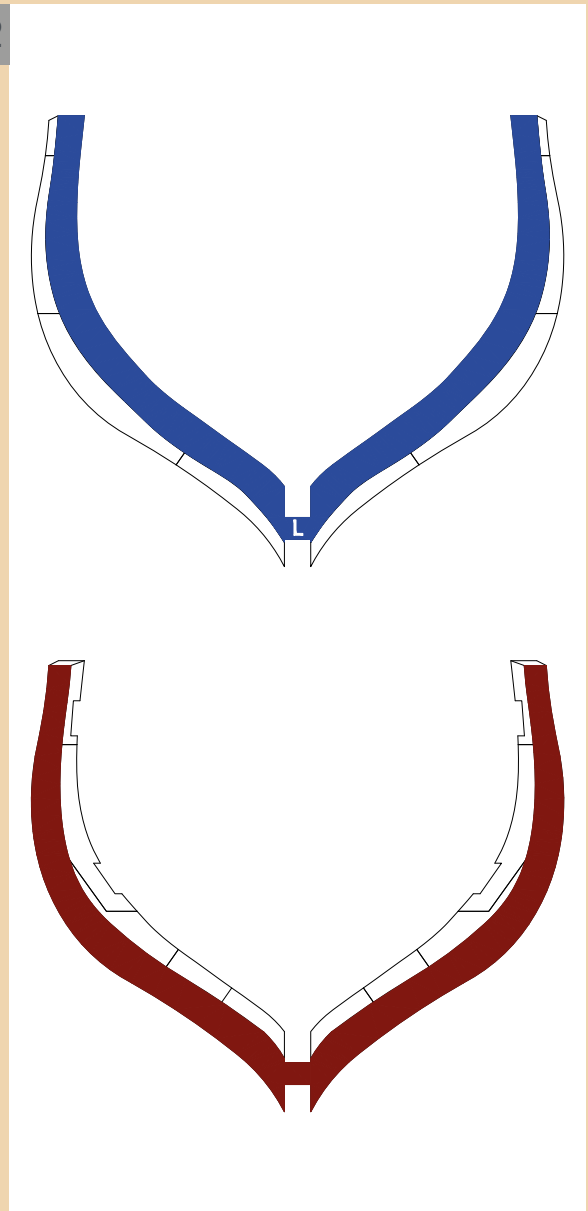
Picture of the ship - side view.

A

B1



B2



Picture A on the previous page is the picture of the ship's side view with numbers and letters assigned to the frames.

General observations:

- the main frame is labelled by sign #
- from the main frame the frames towards the bow are labelled by letters A to L, whereas the ones towards the stern are labelled by numbers 1 to 17.
- the frames towards the bow (in red) from letters E to L, and the ones towards the stern (in green) from numbers 7 to 17, are the frames Pack 03 templates are to be applied to, to make the mitred corner.

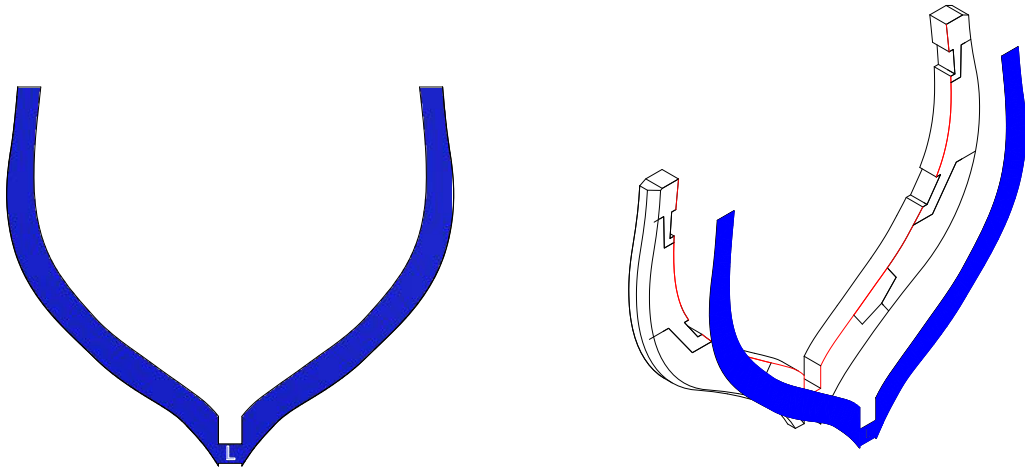
REMEMBER: all the frames are to be glued to the keel with letters and numbers towards the bow.

Pictures B1 and B2 display a sample of frames where the two paper templates are to be applied and printed on an A4 sheet of paper at a scale of 1:1.

The blue template is always to be applied on the side of the number or the letter; the red template is always to be applied on the other side. The main difference is: in the frames with numbers (7-17) the blue template is to be glued following the external outline of the frame, whereas the red template on the other side has to follow the internal outline (see picture B1). In the frames with letters (E - L), the blue template is to be glued on the internal outline of the frame, whereas the red one on the other side is to be glued on the external outline (see picture B2).

A

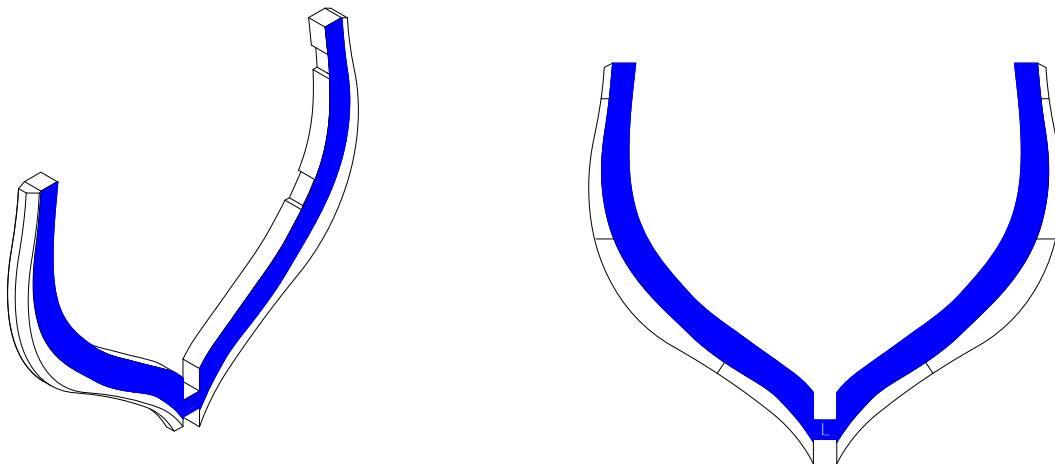
An example of how to glue the templates on the frames with letters.



A

Print the template of frame L on an A4 sheet of paper at a scale of 1:1. Cut out the templates (red and blue) and glue the blue template from letter L side following the internal outline of the frame (picture A).

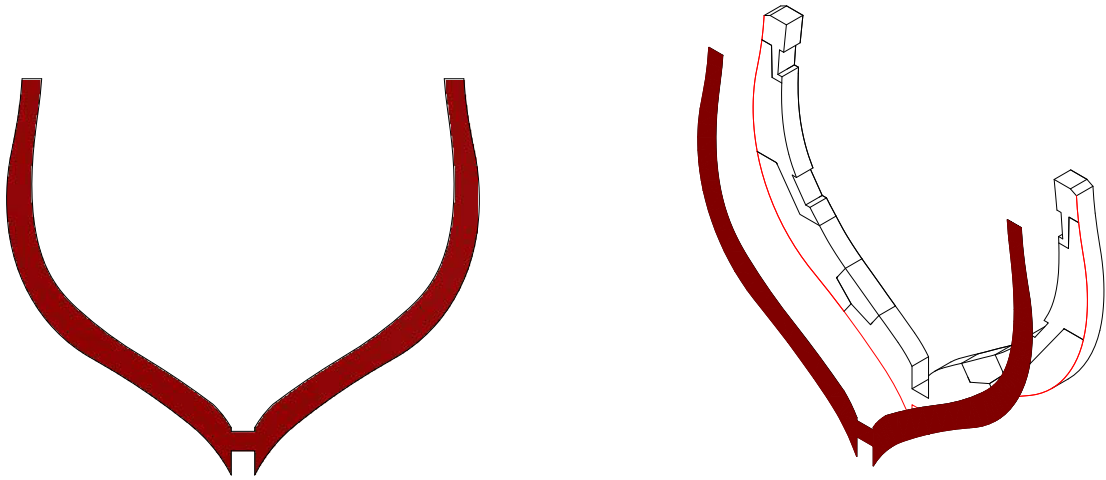
B



B

Blue template glued to the frame on the side labelled with a letter.

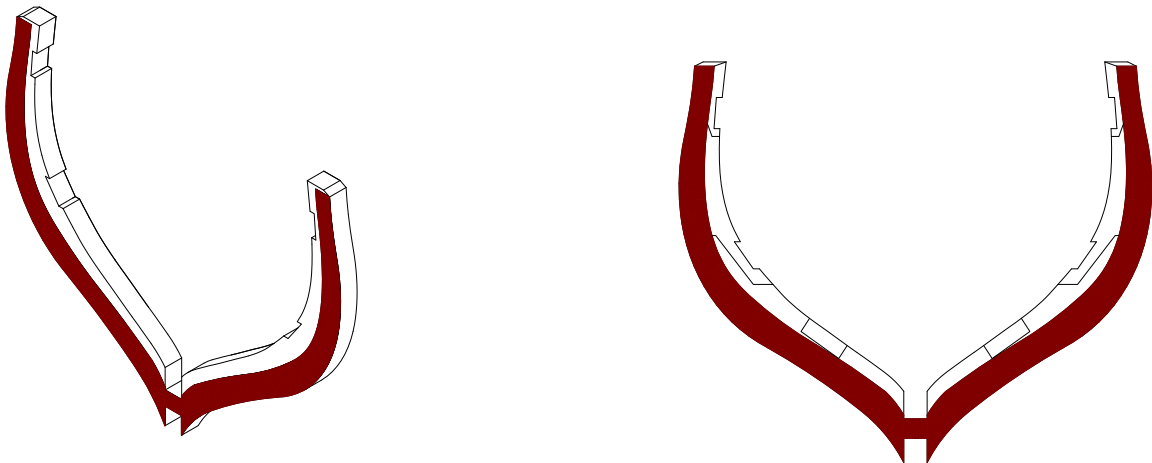
C



C

Glue the red template on the frames following the external outline of the other side.

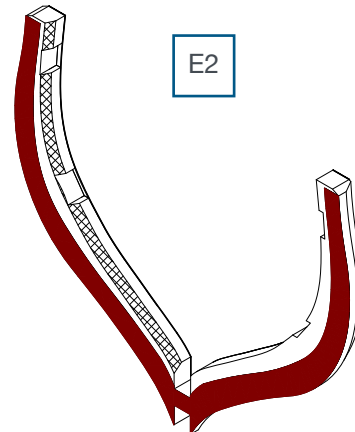
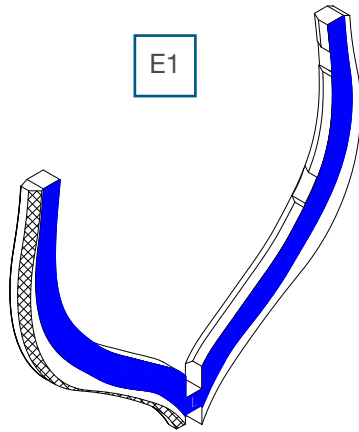
D



D

The red template glued to frame L.

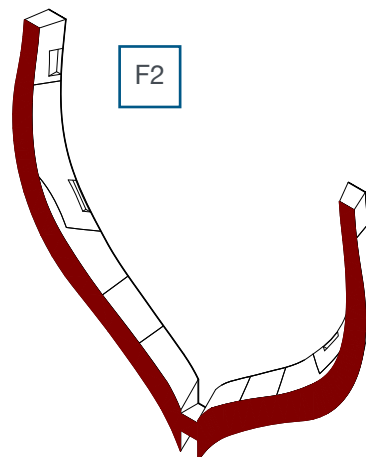
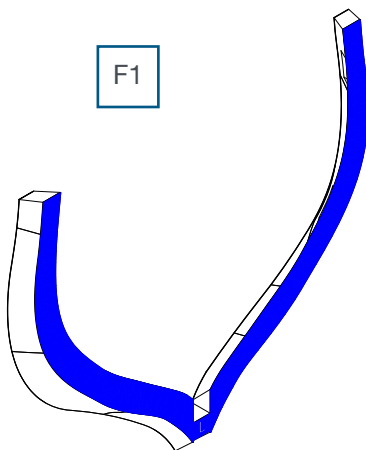
E



E

With the file, start removing the frame external corners with a 45 degree inclination from the external corner of the blue template up to the external corner of the red template glued on the other side (picture E1). Then start removing the frame internal corners with a 45 degree inclination from the internal corner of the red template up to the internal corner of the blue template glued on the other side (picture E2).

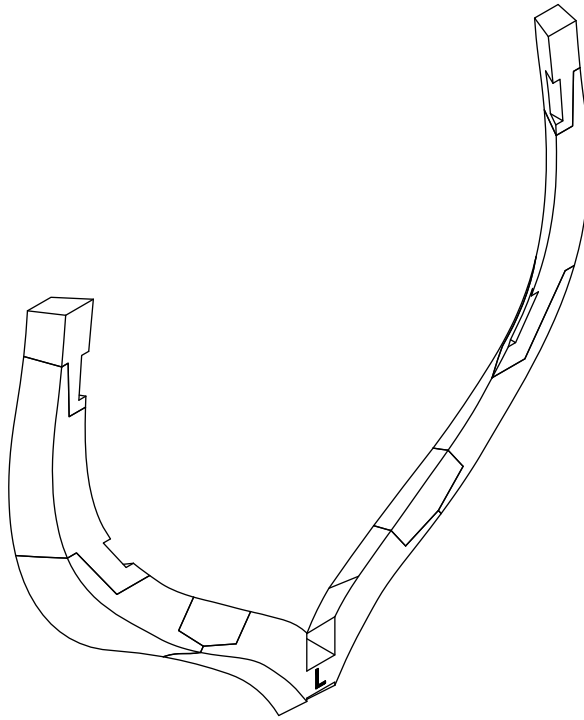
F



F

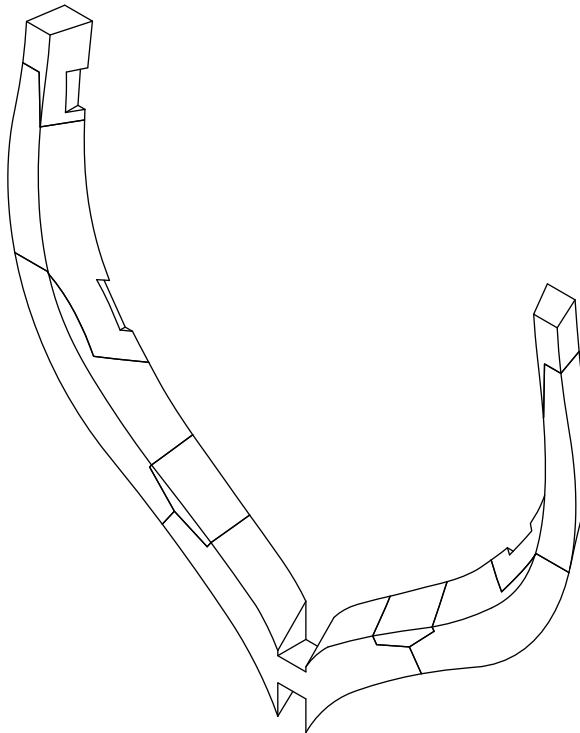
Finish the operation gently with an abrasive sponge until you get a smooth surface at 45 degrees between the external and internal outlines of the paper templates (pictures F1 and F2).

G



G Frame L with mitred corner completed (side labelled with a letter).

H

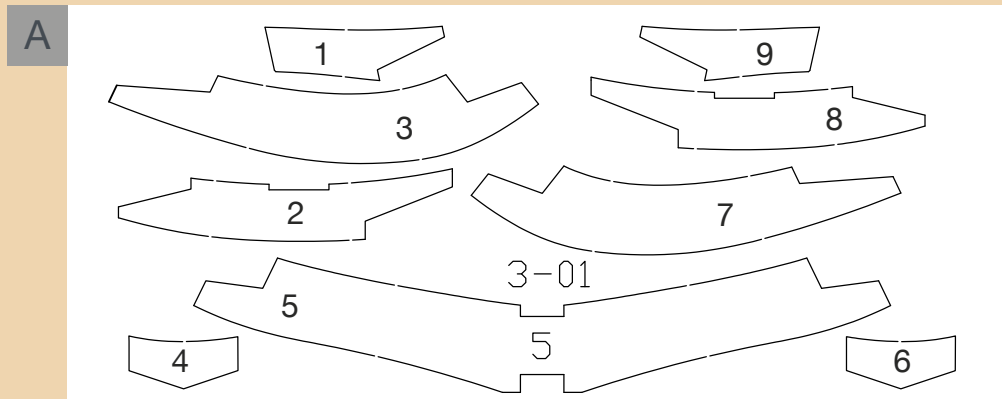


H Frame L with mitred corner completed (opposite side without letter).

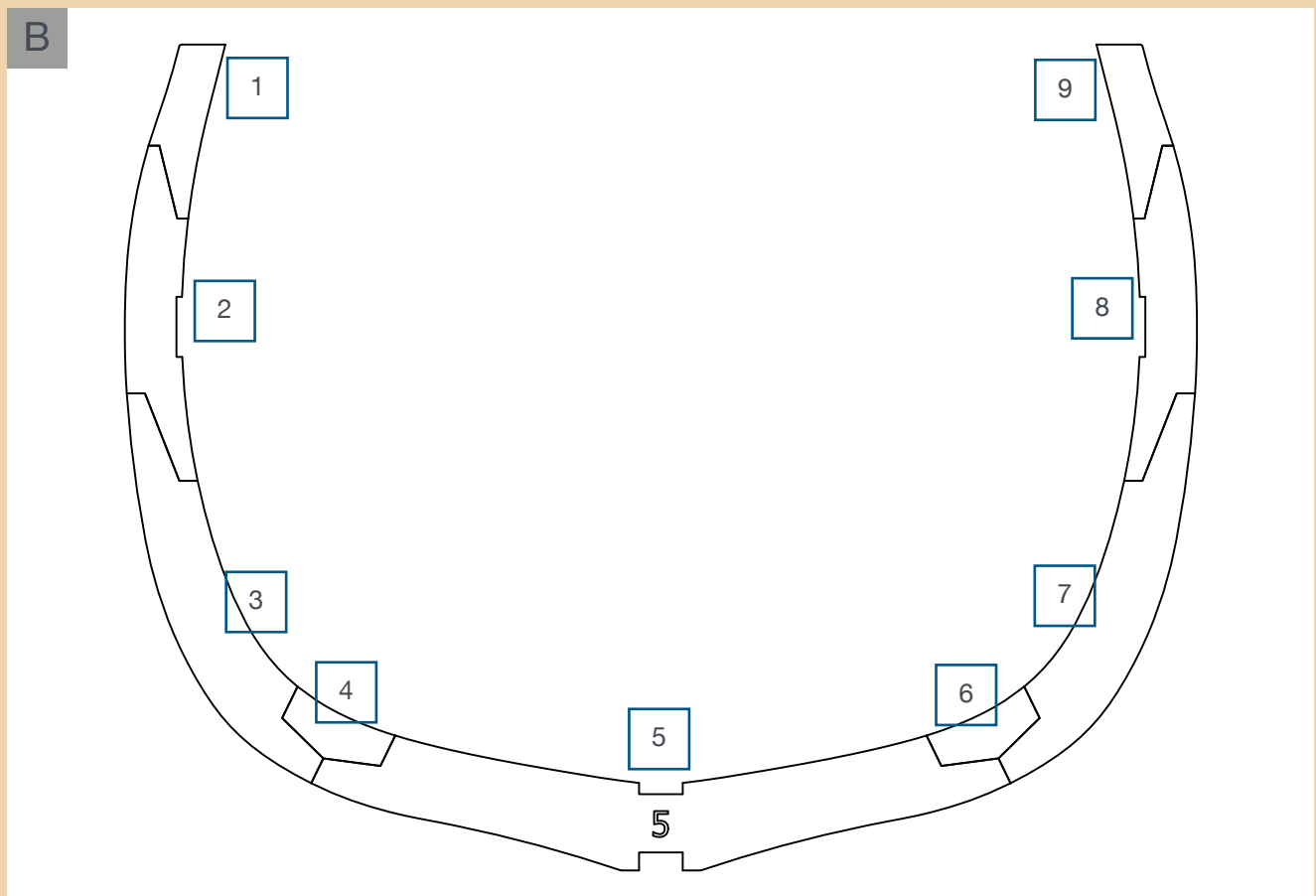
PHASE 21

FRAME 5

Print the template of frame 5 on an A4 sheet of paper at a scale of 1:1.

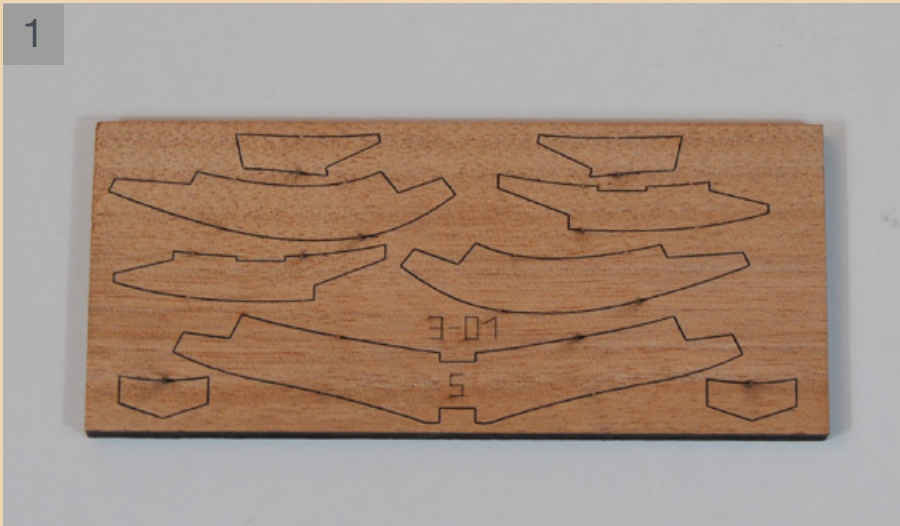


A Plate 3-01 picture.



B Print the template of frame 5 on an A4 sheet of paper at a scale of 1:1. Picture B shows the numbers of plate 3-01 pieces on the template to help you with the right sequence for gluing the frame.

1



1

Frame 5 plate 3-01.

2



2

Glue the frame pieces before the glue dries, overlap it on the template at a scale of 1:1 to check the outline of the frame.

3



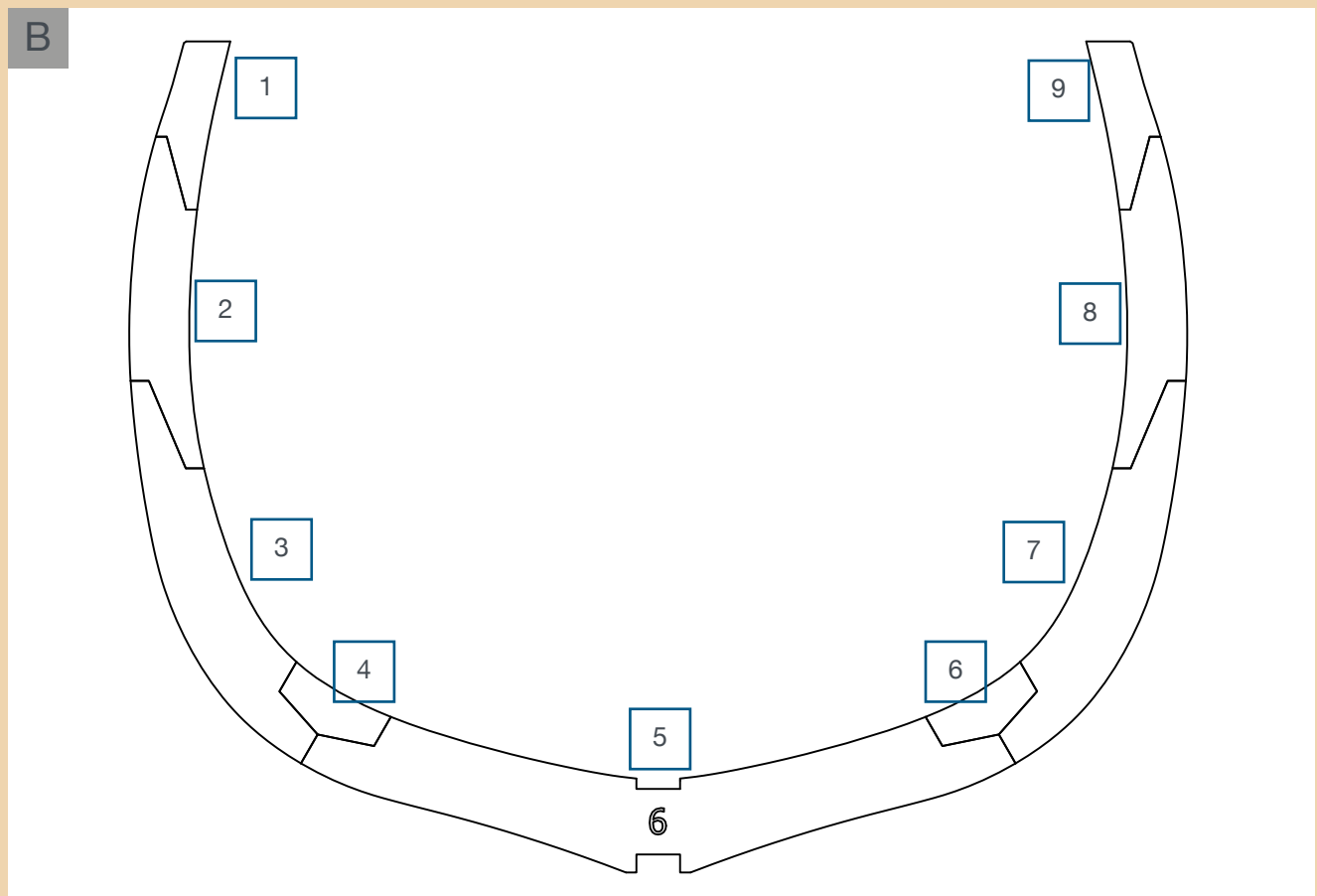
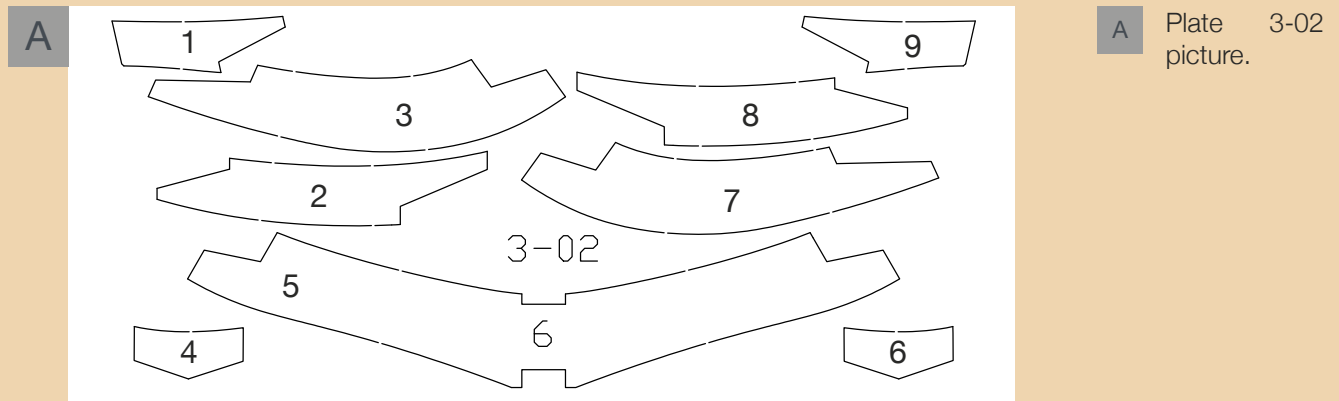
3

Clean laser burns gently inside and outside the frame with an abrasive sponge.

PHASE 22

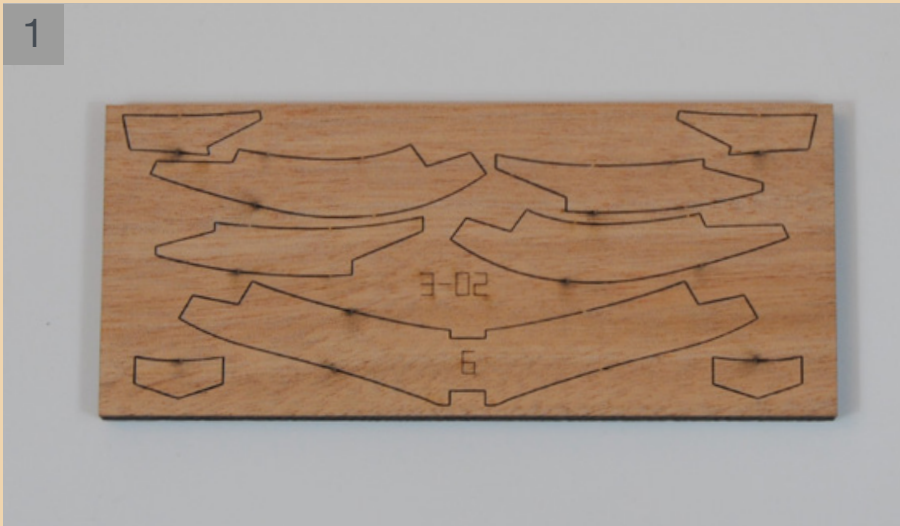
FRAME 6

Print the template of frame 6 on an A4 sheet of paper at a scale of 1:1.



B Print the template of frame 6 on an A4 sheet of paper at a scale of 1:1. Picture B shows the numbers of plate 3-02 pieces on the template to help you with the right sequence for gluing the frame.

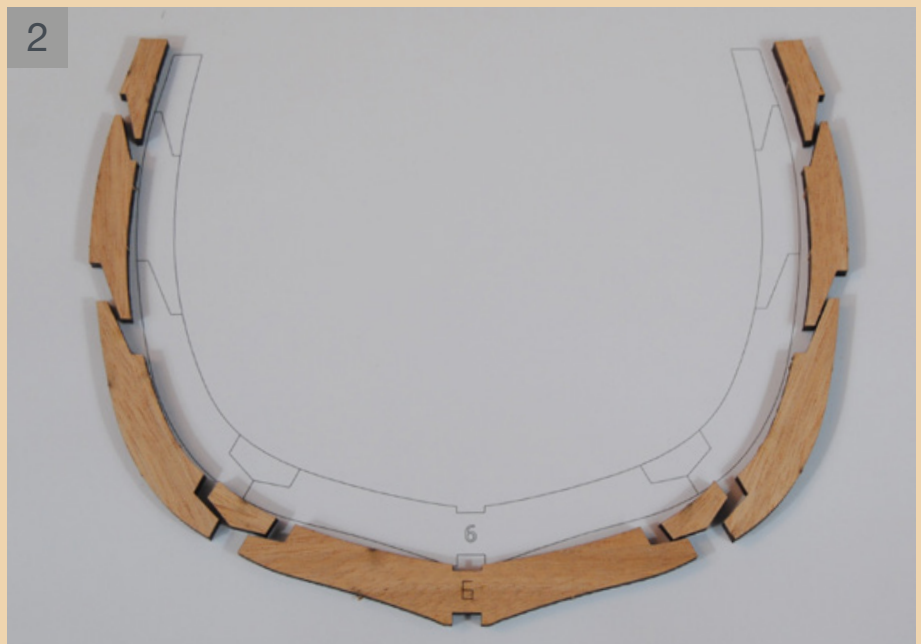
1



1

Frame 6 plate 3-02.

2



2

Glue the frame pieces before the glue dries, overlap it on the template at a scale of 1:1 to check the outline of the frame.

3



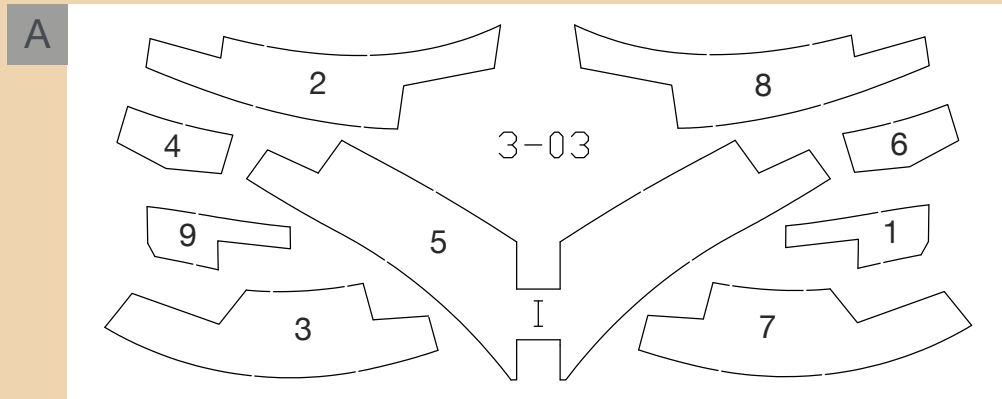
3

Clean laser burns gently inside and outside the frame with an abrasive sponge.

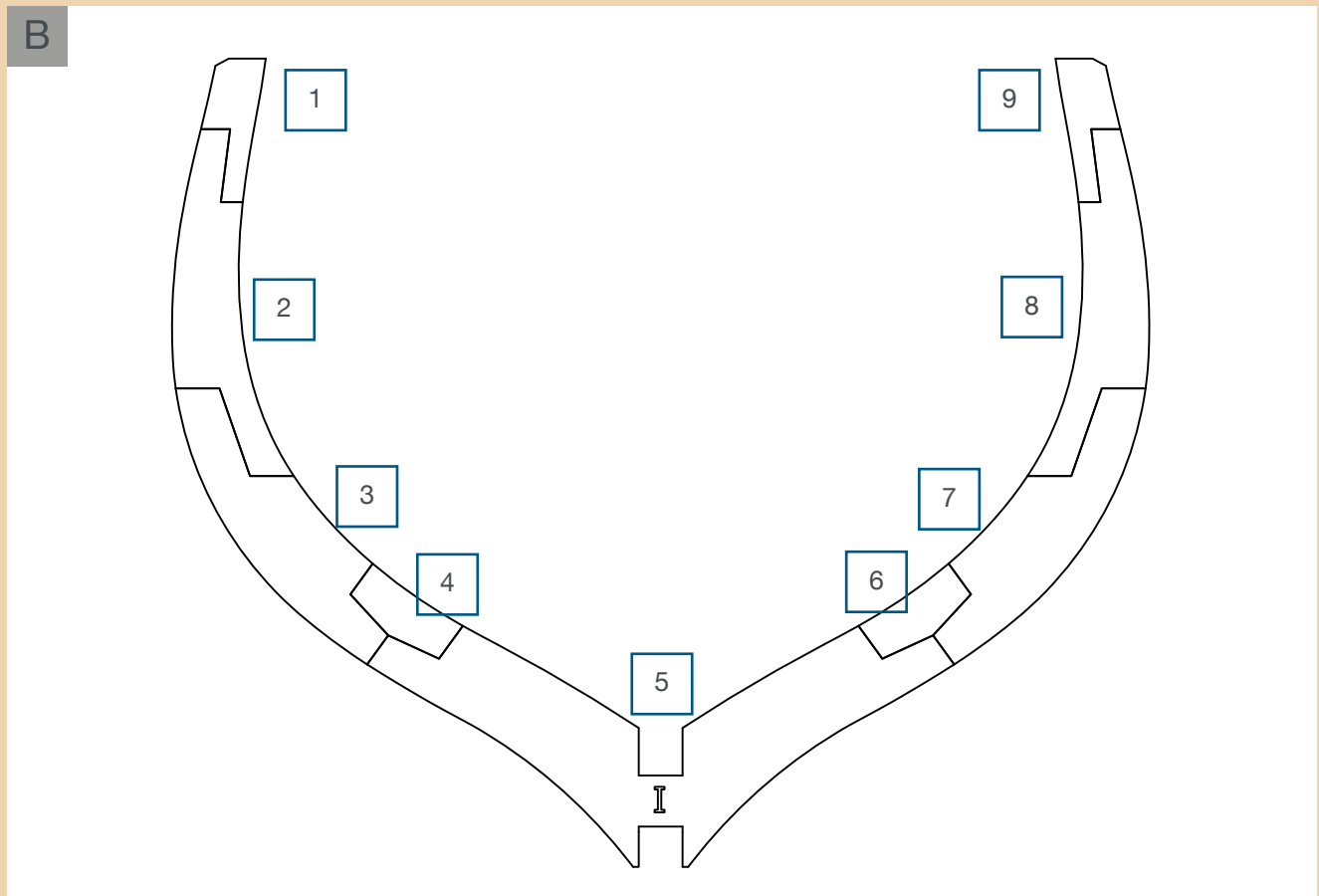
PHASE 23

FRAME I

Print the template of frame I on an A4 sheet of paper at a scale of 1:1.



A Plate 3-03 picture.



B Print the template of frame I on an A4 sheet of paper at a scale of 1:1. Picture B shows the numbers of plate 3-03 pieces on the template to help you with the right sequence for gluing the frame.

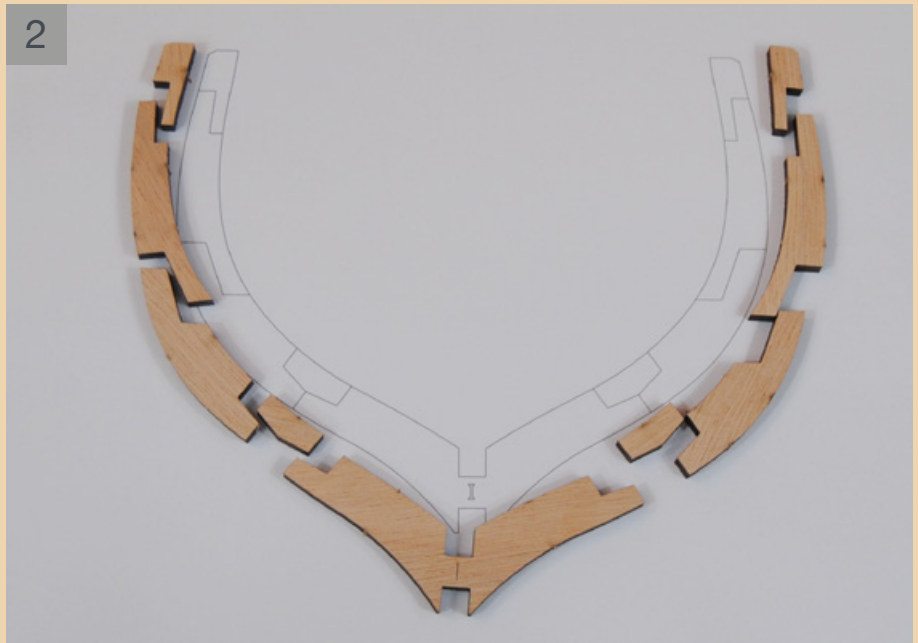
1



1

Frame I plate 3-03.

2



2

Glue the frame pieces before the glue dries, overlap it on the template at a scale of 1:1 to check the outline of the frame.

3



3

Frame I glued. Read the assembly instructions carefully on the following pages to glue the templates and make the mitred corner.

4



4

Cut out the templates you printed on the A4 sheet of paper at a scale of 1:1.
Glue the blue template on the side labelled with a letter following the internal outline of the frame.

5



5

Turn the frame and glue the red template following the external outline of the frame.

6



6

Gently file the external part of the frame from the external outline of the blue template up to the external outline of the red template on the other side of the frame.

7



7

Gently file the internal part of the frame from the internal outline of the red template up to the internal outline of the blue template on the other side of the frame.

8



8

Remove the blue template from the frame on the side labelled with a letter.

9



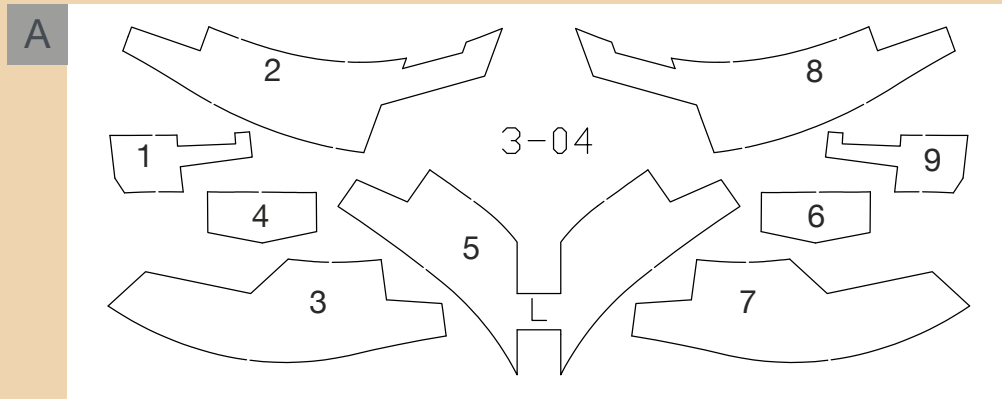
9

Remove the red template from the frame on the other side.

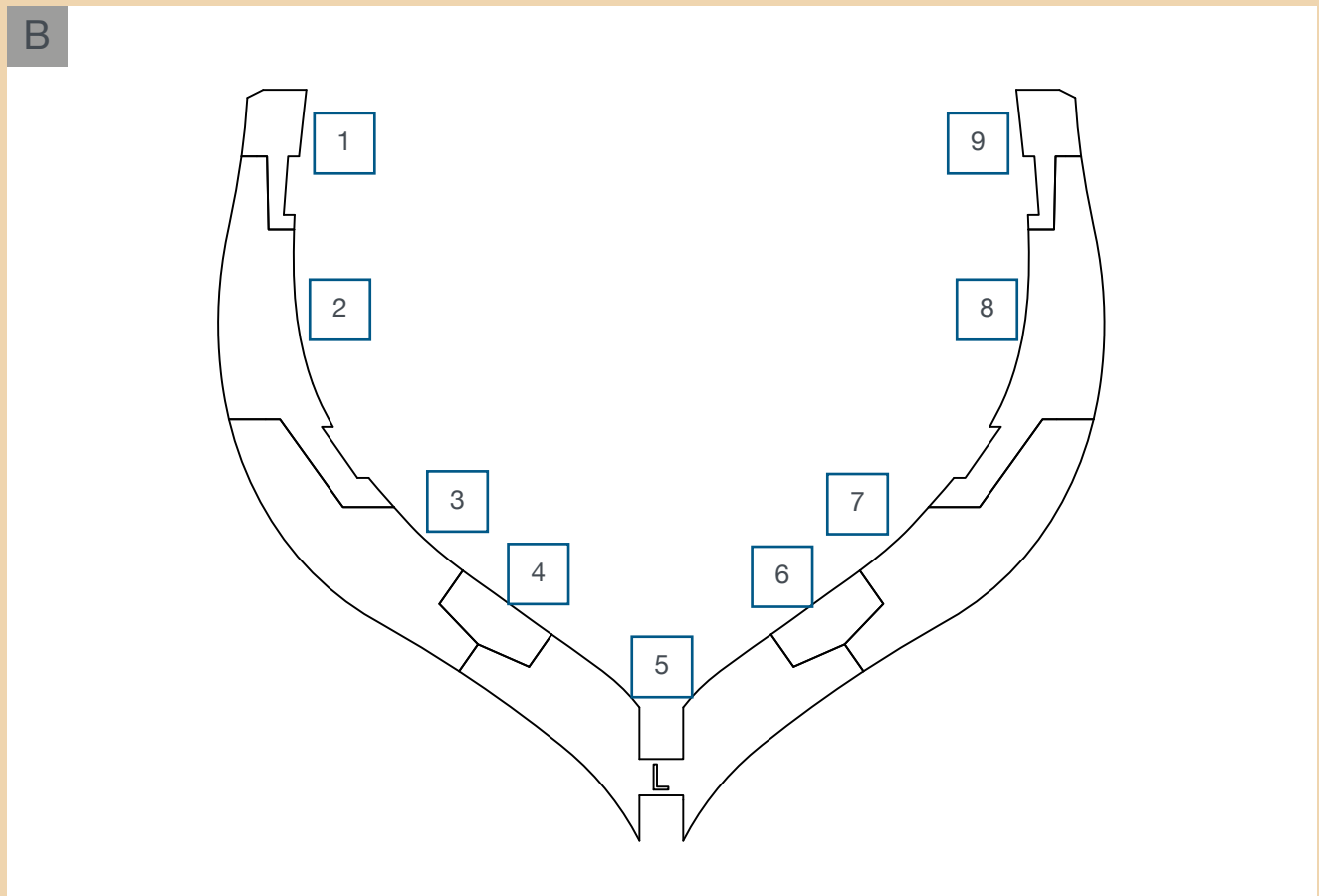
PHASE 24

FRAME L

Print the template of frame L on an A4 sheet of paper at a scale of 1:1.

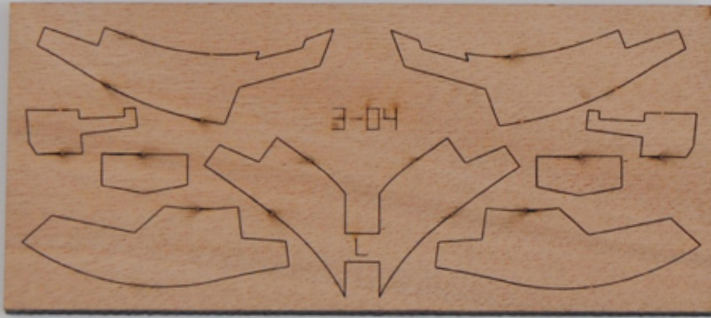


A Plate 3-04 picture.



B Print the template of frame L on an A4 sheet of paper at a scale of 1:1. Picture B shows the numbers of plate 3-04 pieces on the template to help you with the right sequence for gluing the frame.

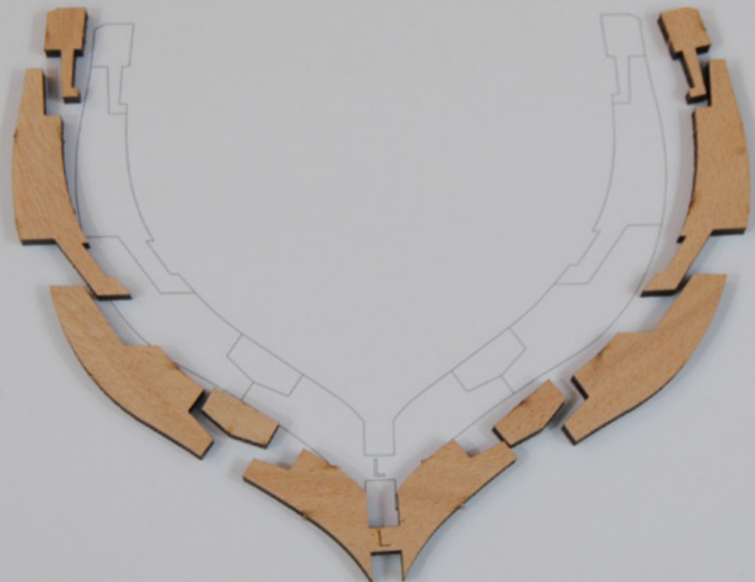
1



1

Frame L plate 3-04.

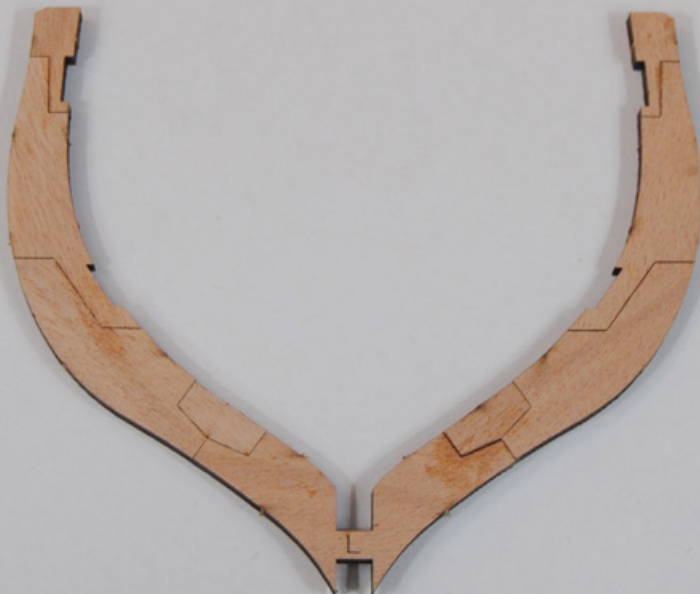
2



2

Glue the frame pieces before the glue dries, overlap it on the template at a scale of 1:1 to check the outline of the frame.

3



3

Frame L glued. Read the assembly instructions carefully on the following pages to glue the templates and make the mitred corner.

4



4

Cut out the templates you printed on the A4 sheet of paper at a scale of 1:1.
Glue the blue template on the side labelled with a letter following the internal outline of the frame.

5



5

Turn the frame and glue the red template following the external outline of the frame.

6



6

Gently file the external part of the frame from the external outline of the blue template up to the external outline of the red template on the other side of the frame.

7



7

Gently file the internal part of the frame from the internal outline of the red template up to the internal outline of the blue template on the other side of the frame.

8



8

Remove the blue template from the frame on the side labelled with a letter.

9



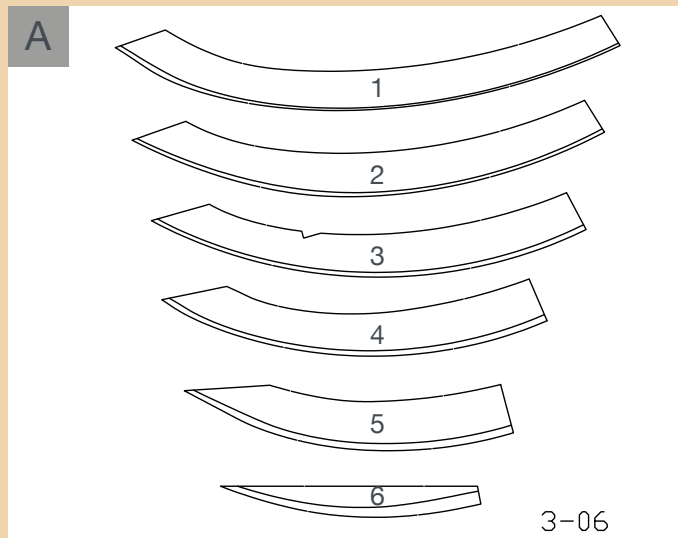
9

Remove the red template from the frame on the other side.

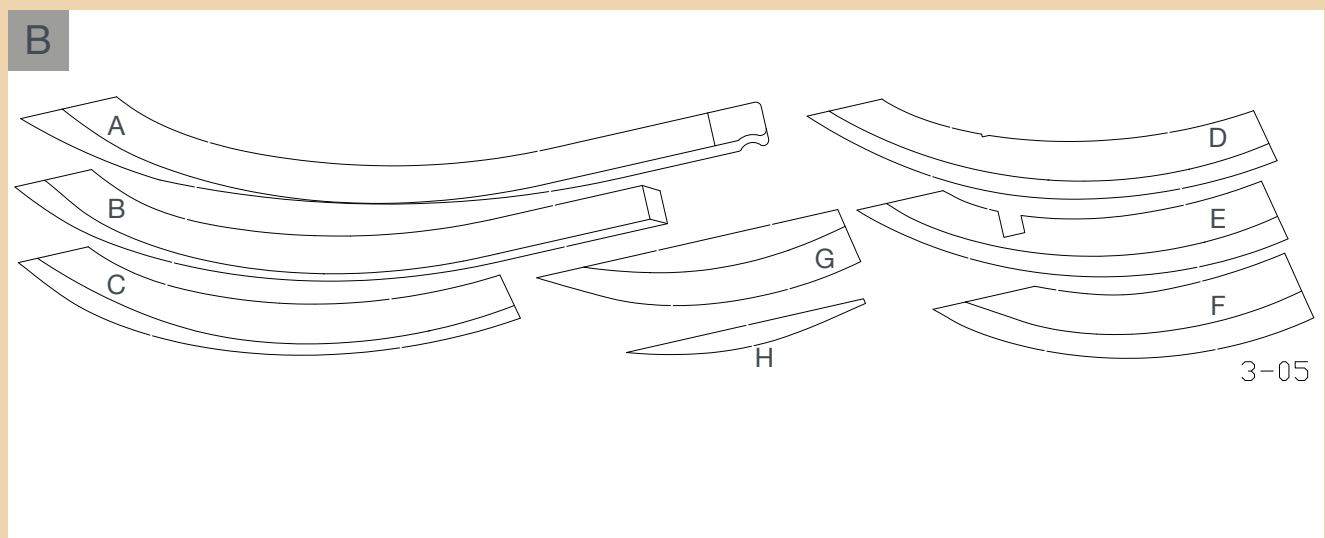
PHASE 25

HAWSE PIECES 01

Print the template of the hawse pieces at a scale of 1:1 on an A4 sheet of paper.

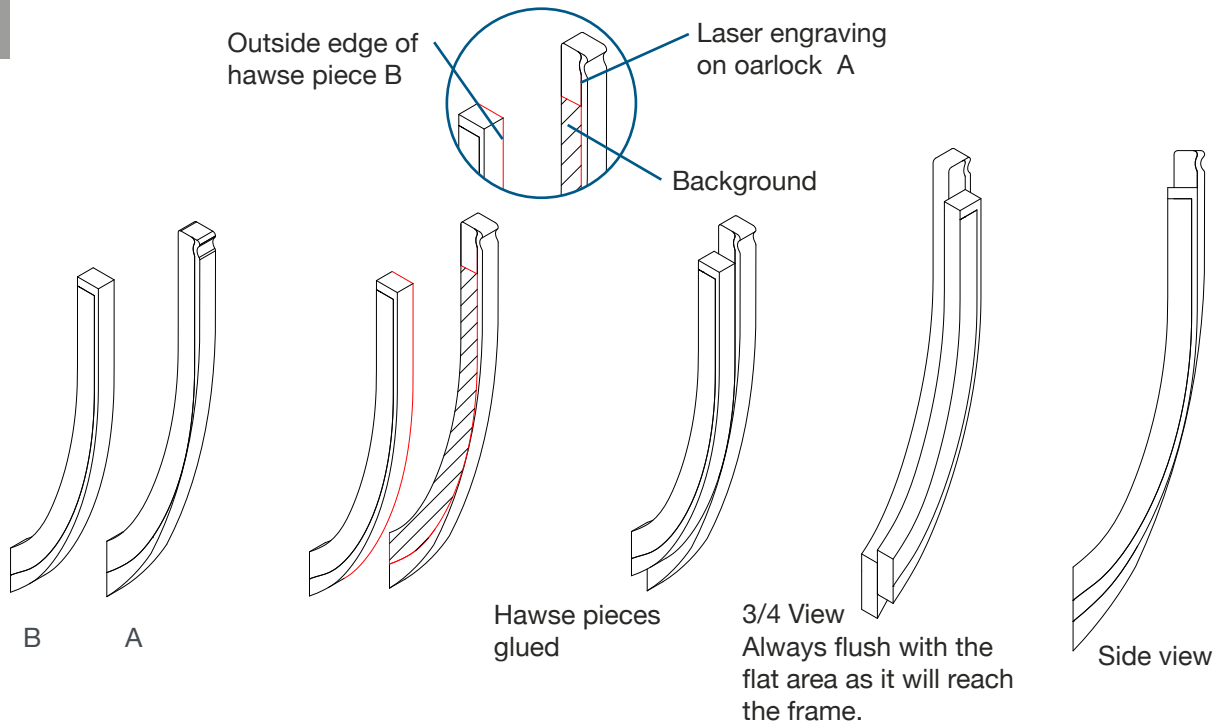


A Plate 3-06 picture.



B Plate 3-05 picture.

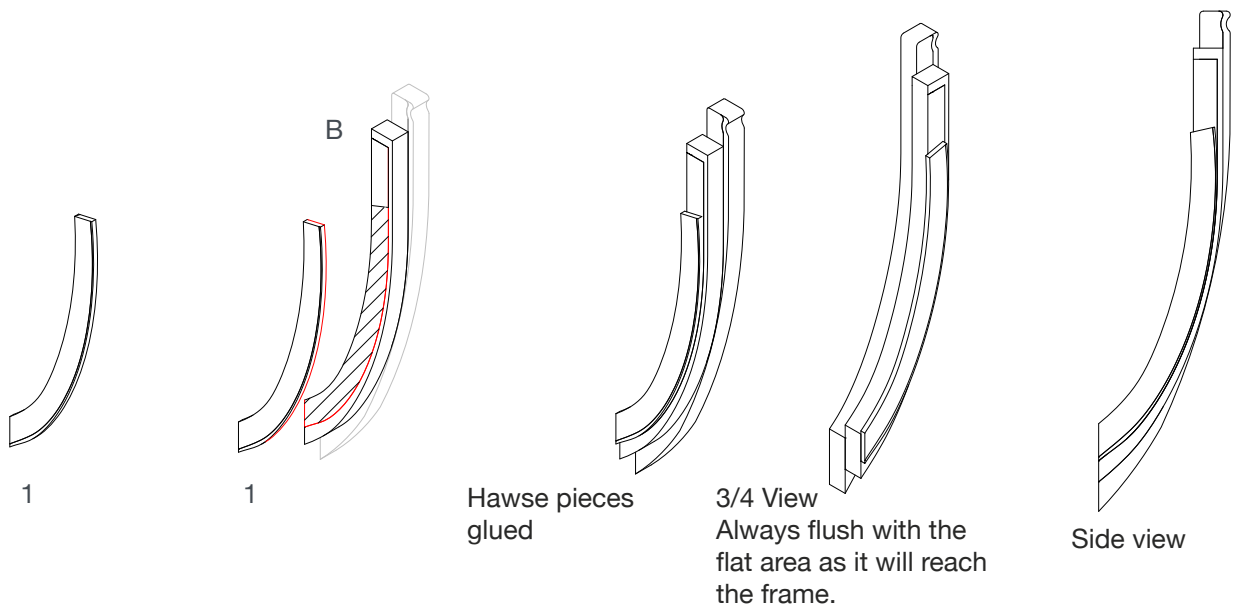
1



1

Remove pieces A and B from plate 3-05, apply glue on hawse piece A background and glue hawse piece B to match hawse piece B red outline with hawse piece A laser engraving (marked by the background on the picture).

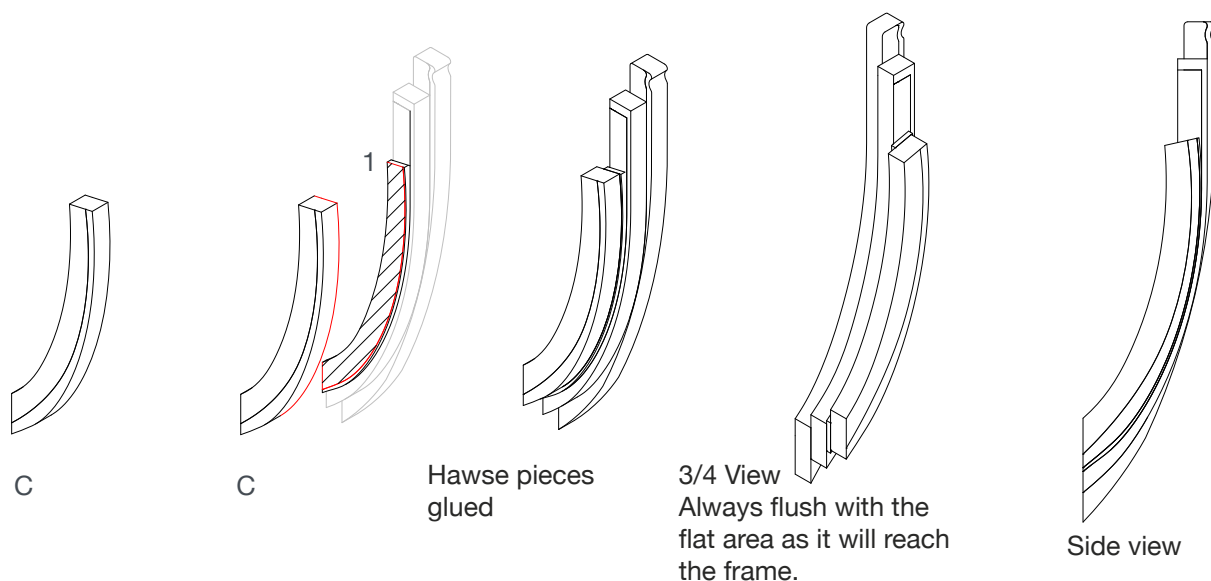
2



2

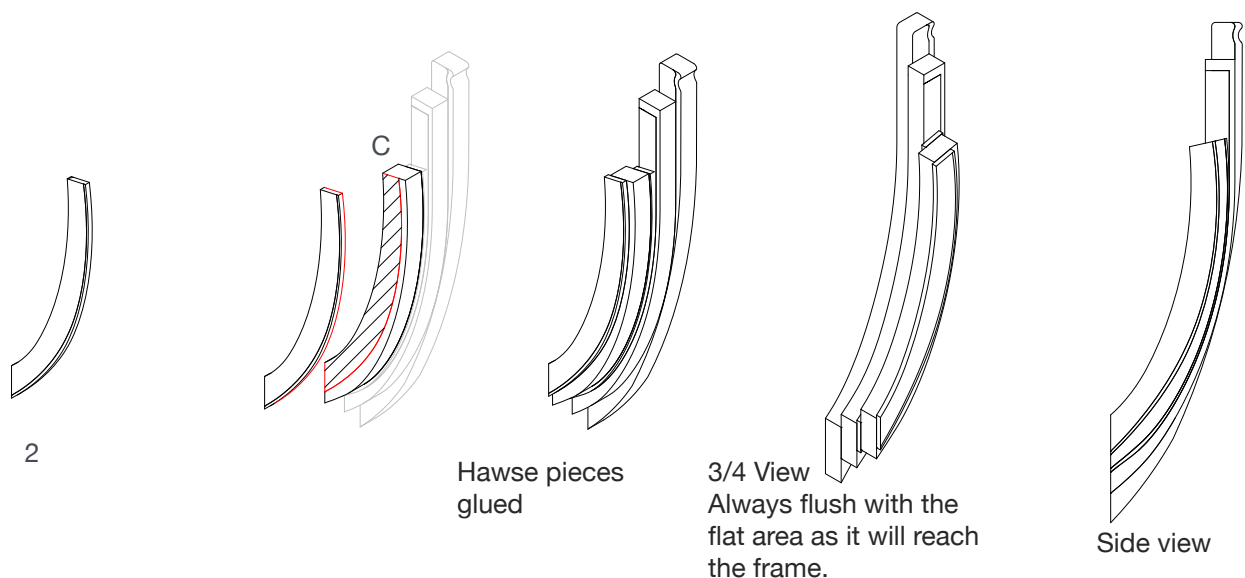
Remove piece 1 from plate 3-06, apply glue on hawse piece B background and glue spacer 1 to match spacer 1 red outline with hawse piece B laser engraving (marked by the background on the picture).

3



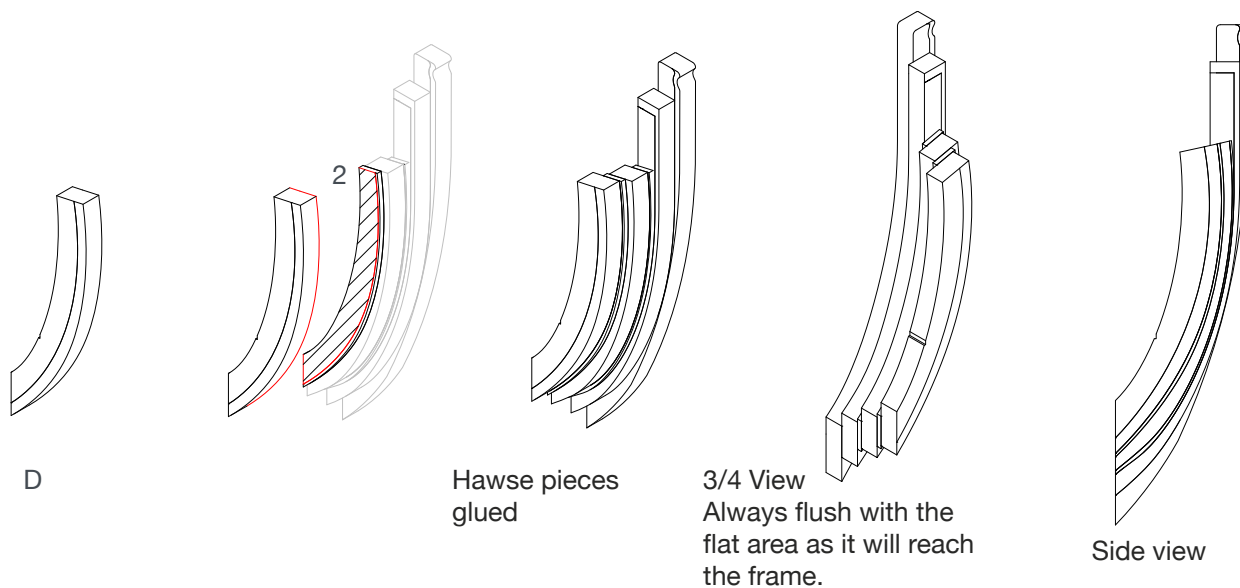
- 3 Remove piece C from plate 3-05, apply glue on spacer 1 background and glue oarlock C to match hawse piece C red outline with spacer 1 laser engraving (marked by the background on the picture).

4



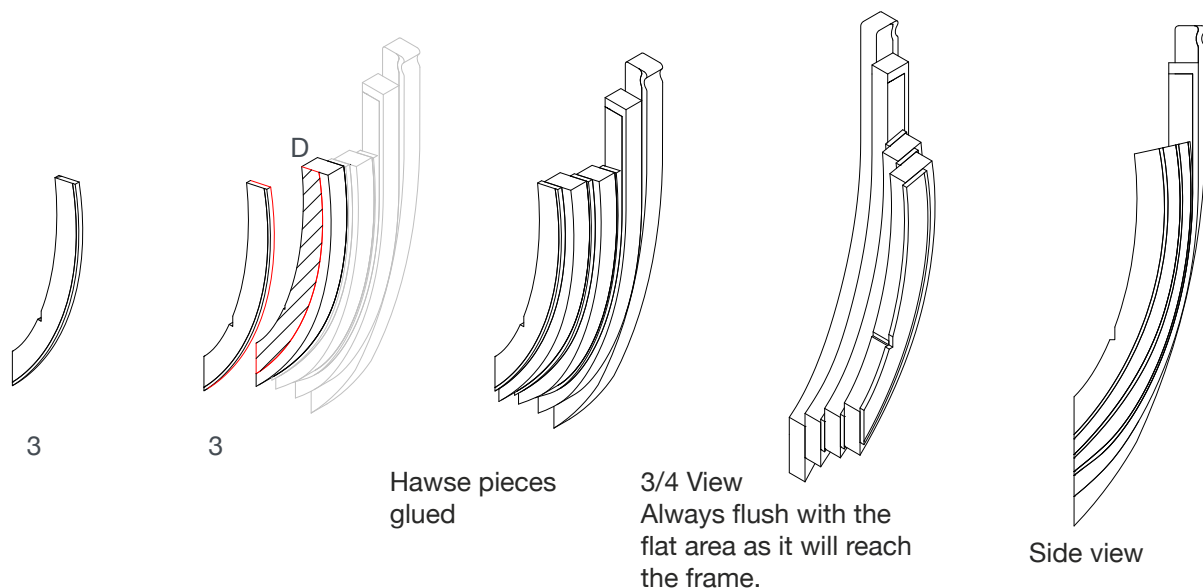
- 4 Remove piece 2 from plate 3-06, apply glue on hawse piece C background and glue spacer 2 to match spacer 2 red outline with hawse piece C laser engraving (marked by the background on the picture).

5



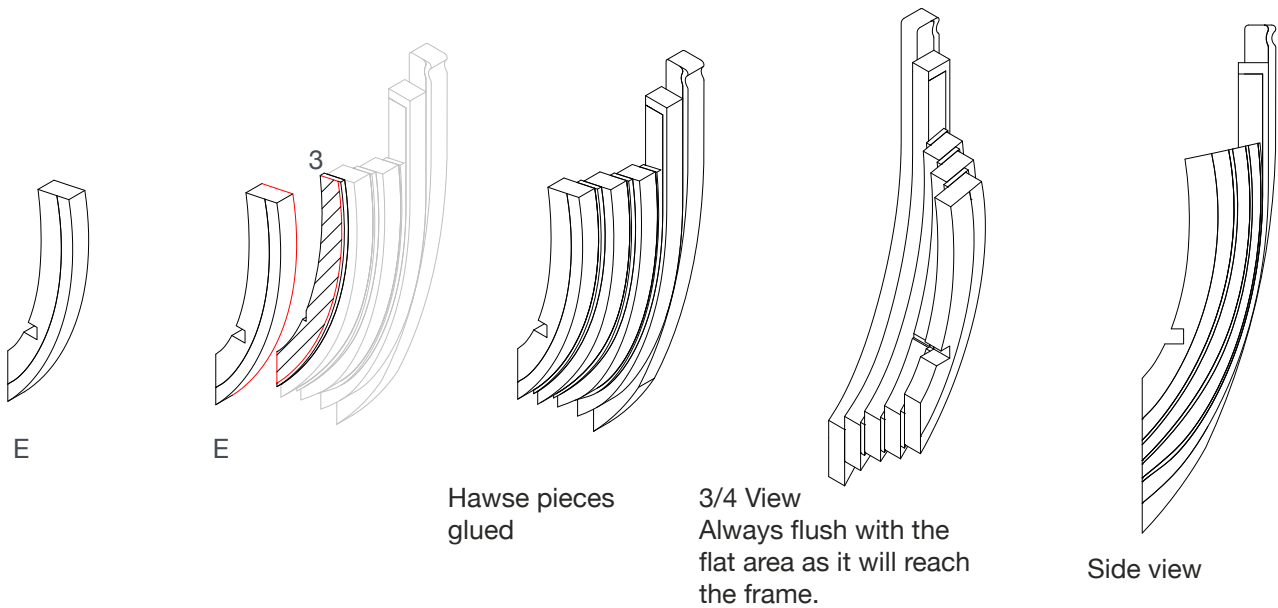
- 5 Remove piece D from plate 3-05, apply glue on spacer 2 background and glue hawse piece D to match hawse piece D red outline with spacer 2 laser engraving (marked by the background on the picture).

6



- 6 Remove piece 3 from plate 3-06, apply glue on hawse piece D background and glue spacer 3 to match spacer 3 red outline with hawse piece D laser engraving (marked by the background on the picture).

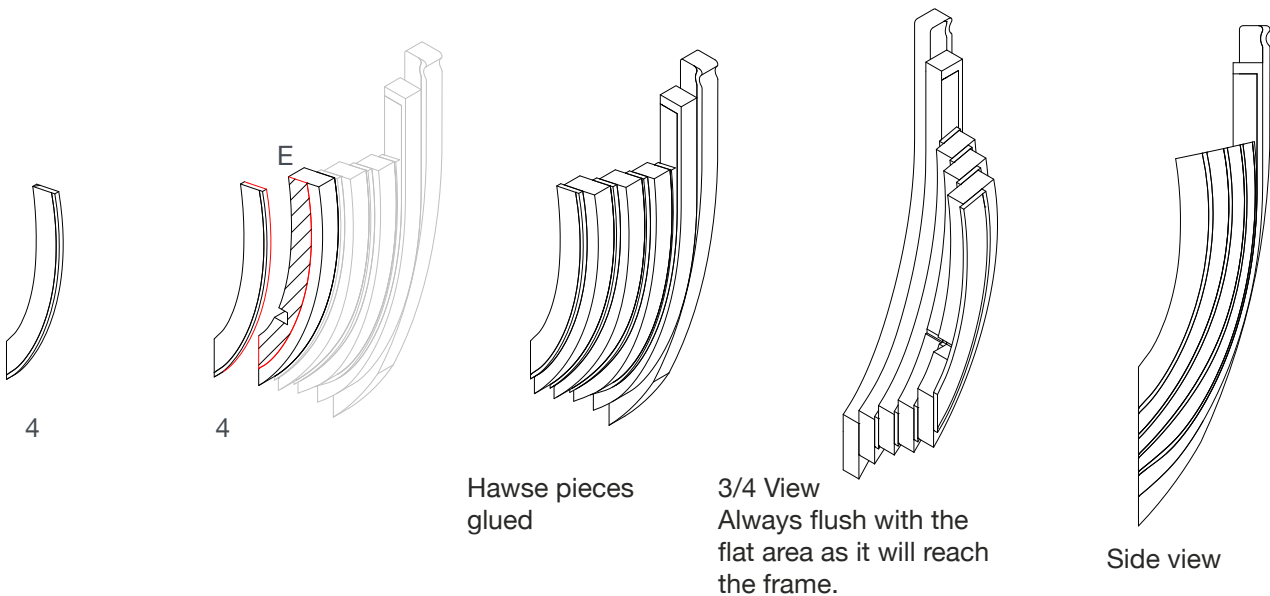
7



7

Remove piece E from plate 3-05, apply glue on spacer 3 background and glue hawse piece E to match hawse piece E red outline with spacer 3 laser engraving (marked by the background on the picture).

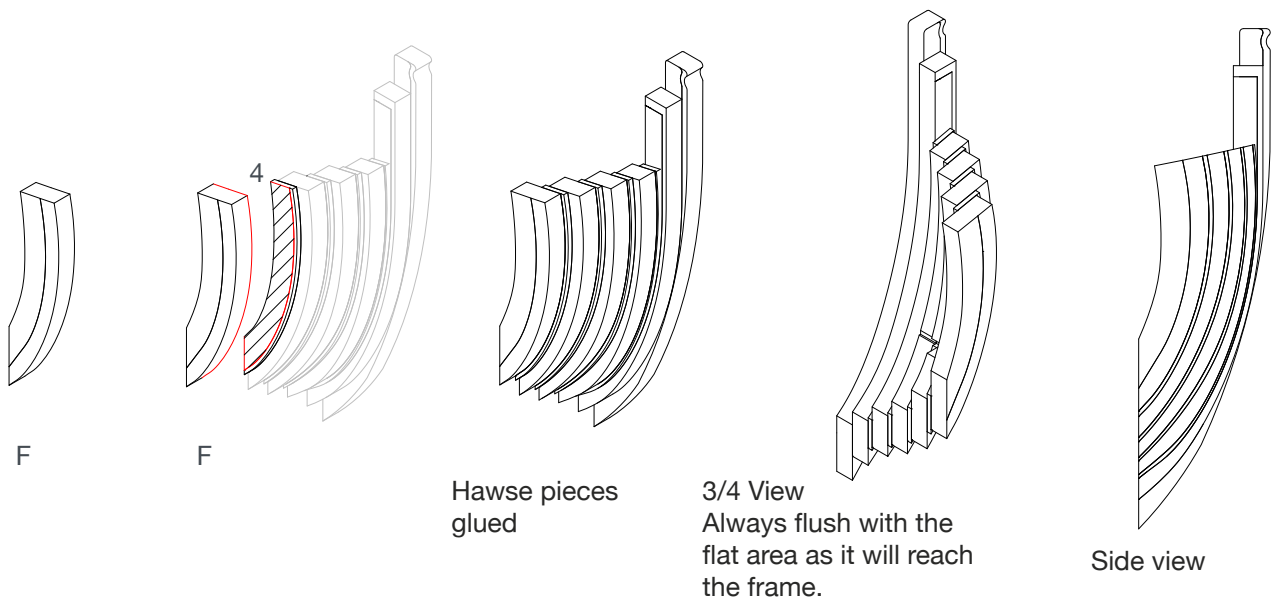
8



8

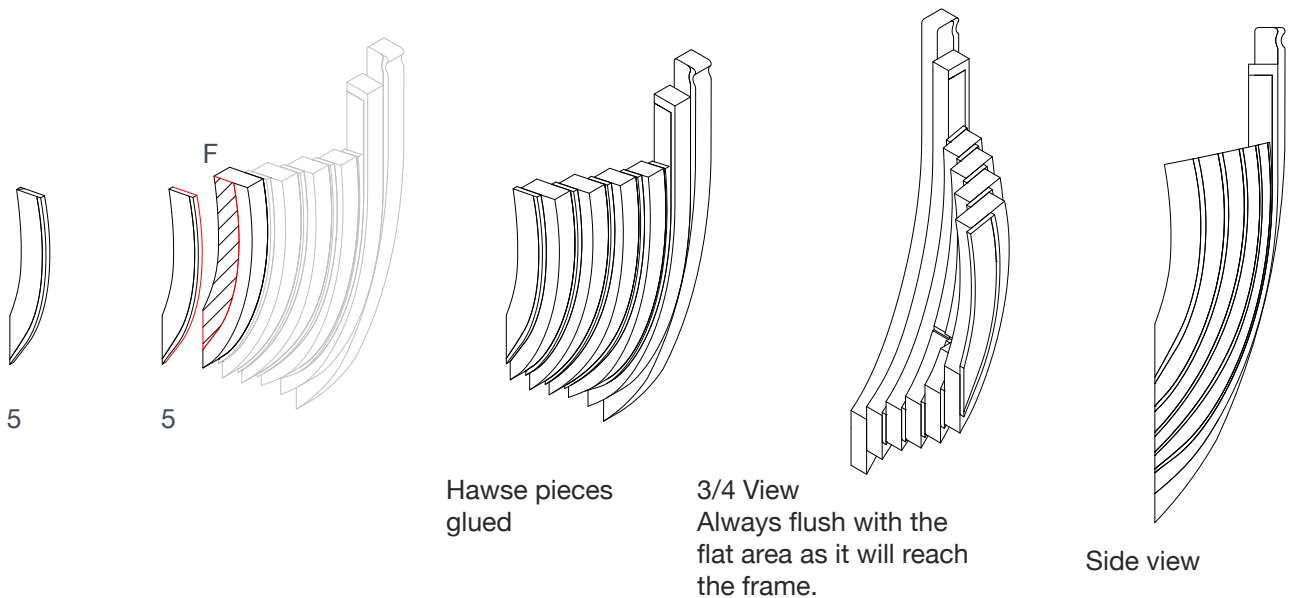
Remove piece 4 from plate 3-06, apply glue on hawse piece E background and glue spacer 4 to match spacer 4 red outline with hawse piece D laser engraving (marked by the background on the picture).

9



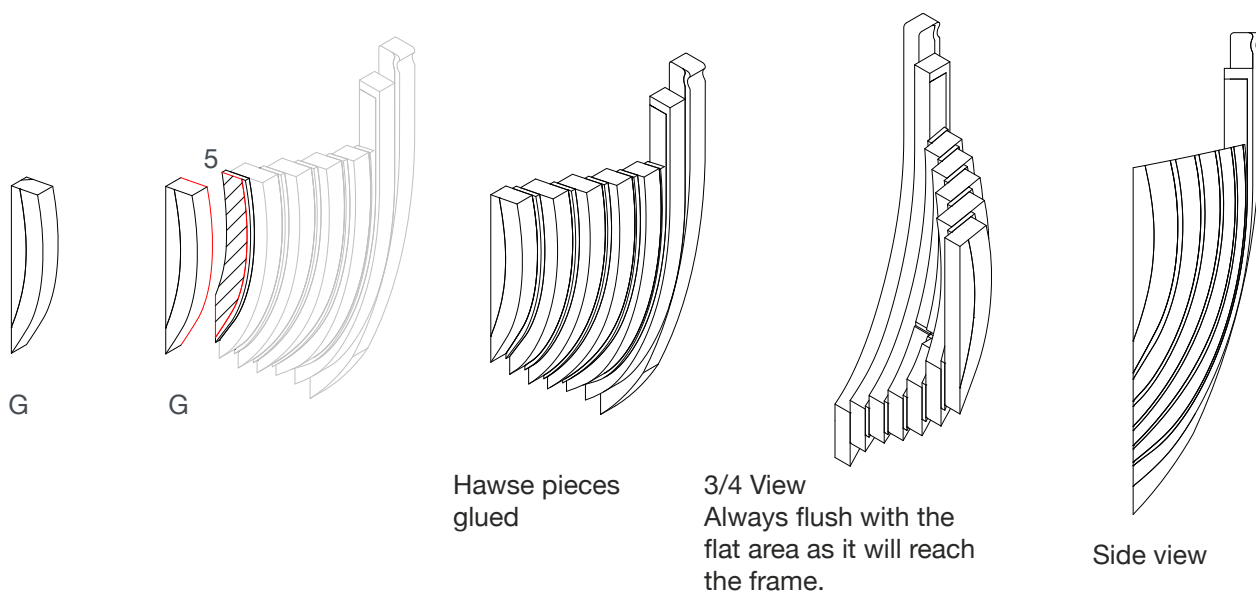
- 9 Remove piece F from plate 3-05, apply glue on spacer 4 background and glue hawse piece F to match hawse piece F red outline with spacer 4 laser engraving (marked by the background on the picture).

10



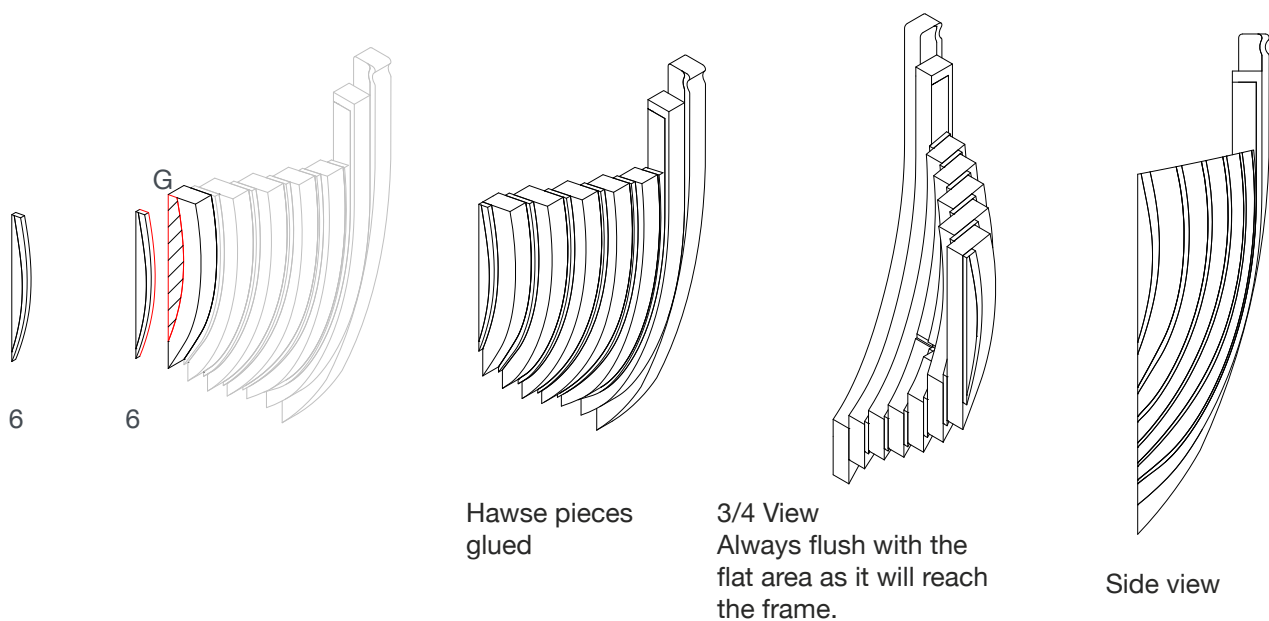
- 10 Remove piece 5 from plate 3-06, apply glue on hawse piece F background and glue spacer 5 to match spacer 5 red outline with hawse piece F laser engraving (marked by the background on the picture).

11



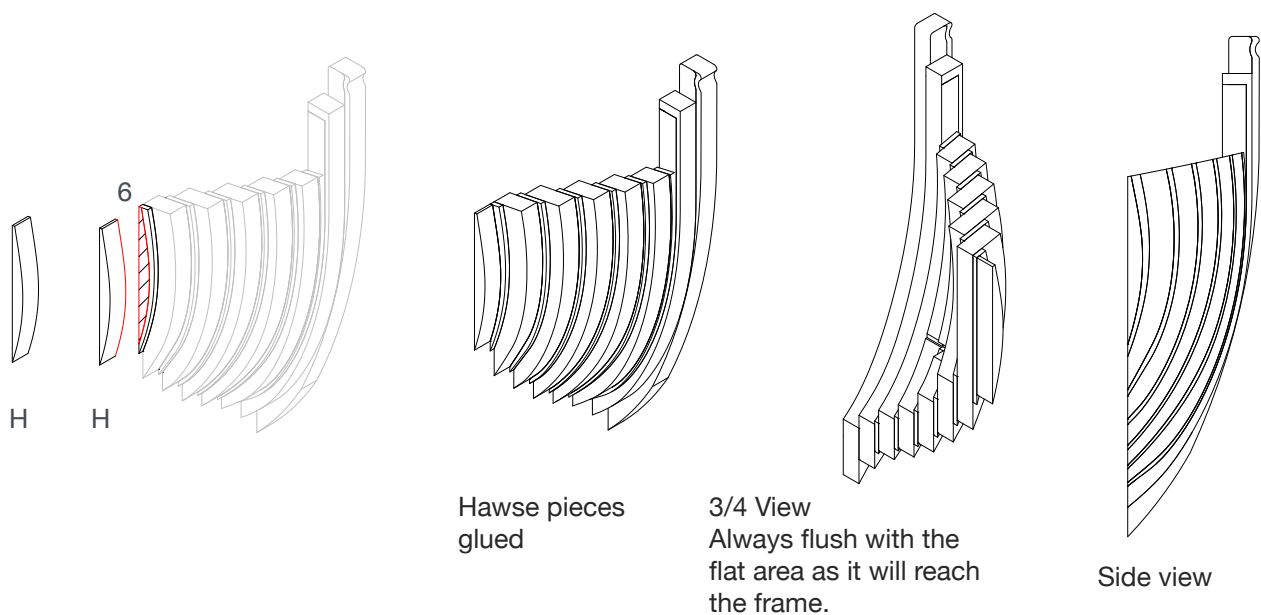
- 11 Remove piece G from plate 3-05, apply glue on spacer 5 background and glue hawse piece G to match hawse piece G red outline with spacer 5 laser engraving (marked by the background on the picture).

12



- 12 Remove piece 6 from plate 3-06, apply glue on hawse piece G background and glue spacer 6 to match spacer 6 red outline with hawse piece G laser engraving (marked by the background on the picture).

13



13 Remove piece H from plate 3-05, apply glue on spacer 6 background and glue hawse piece H to match hawse piece H red outline with spacer 6 laser engraving (marked by the background on the picture).

14



14 Hawse piece - rear view.

15



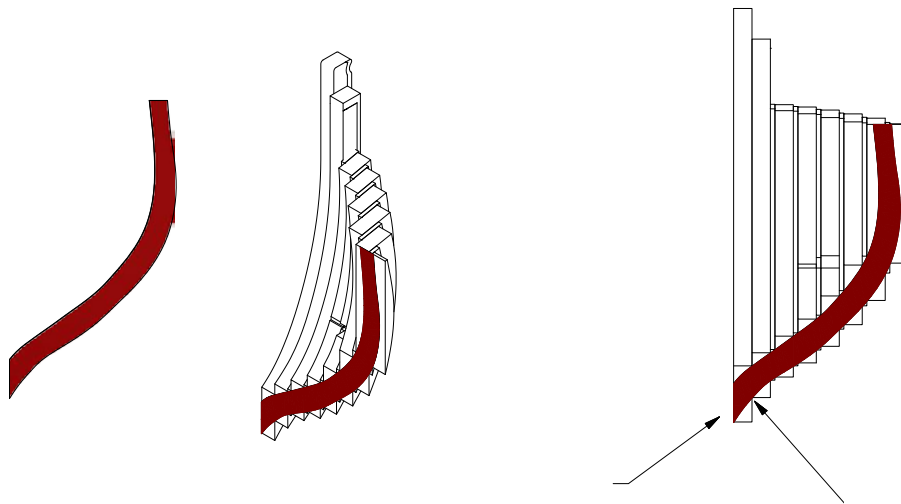
15 Hawse piece - front view.

16



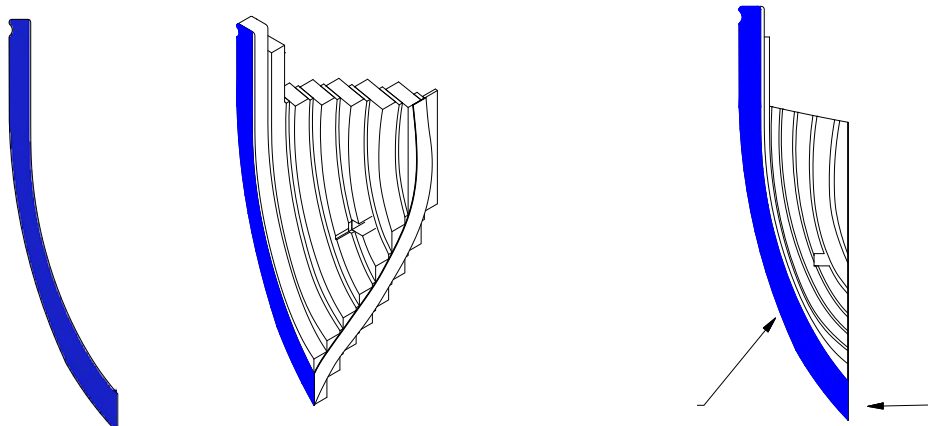
16 Hawse piece - side view.

17



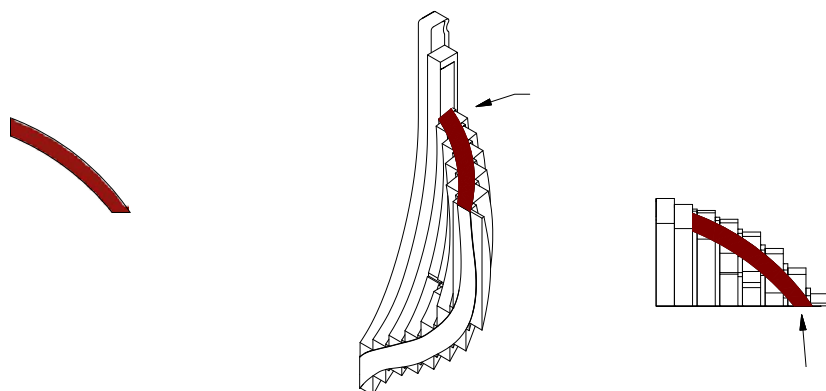
17 Template - frame L side.

18



18 Template - keel side.

19



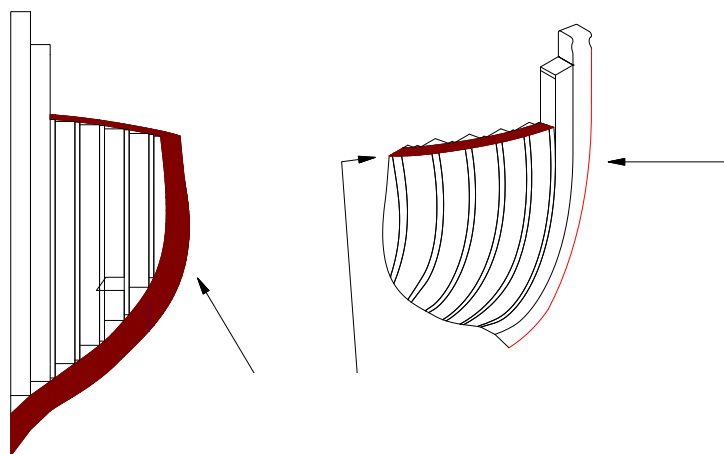
19 Template - top side.

20



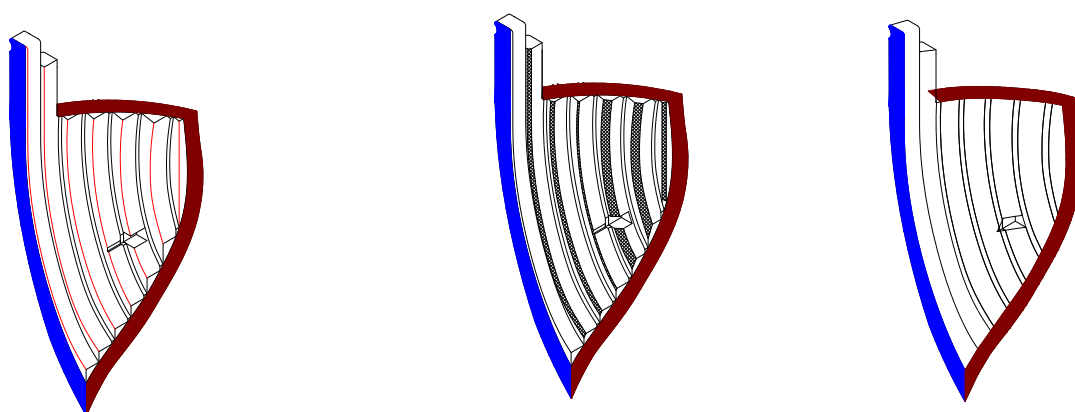
20 Start beveling the corners highlighted in red with the file (see picture).

21



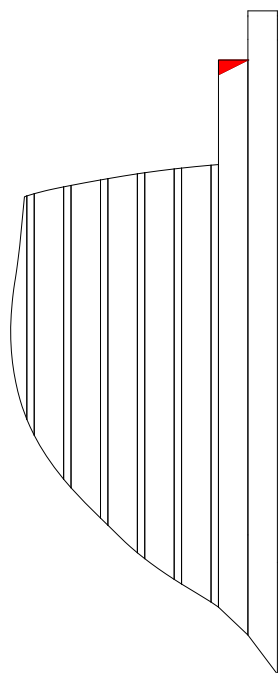
21 Hawse piece - external side completed.

22



22 Start bevelling corners highlighted in red with the file (see picture) until you get a smooth surface matching with the templates.

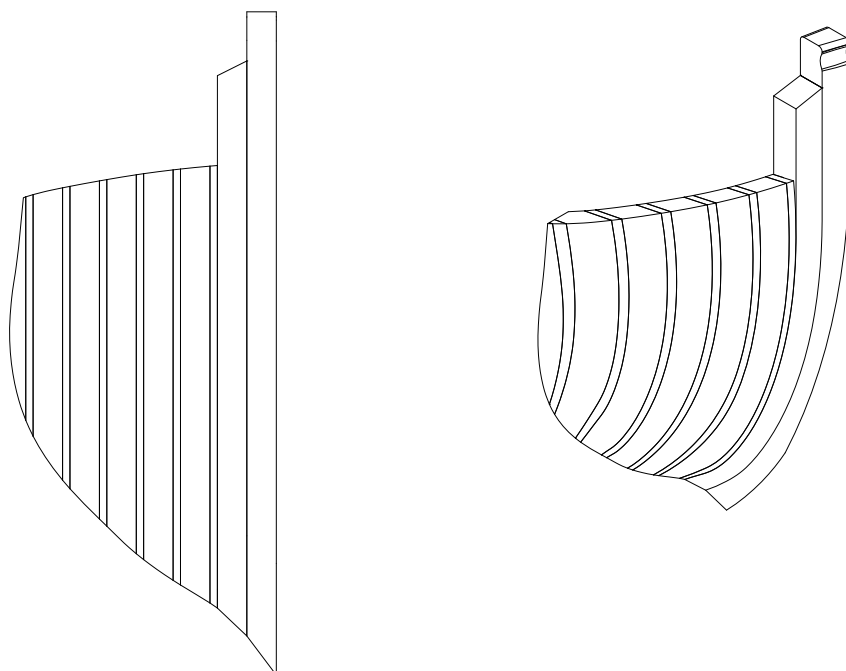
23



23

Remove the corner marked in red (marking reference on hawse piece B).

24



24

Completed hawse piece after removing templates.

25



25 Hawse piece with template - frame L side.

26



26 Hawse piece with template - keel side.

27



27 Completed hawse piece - rear view.

28



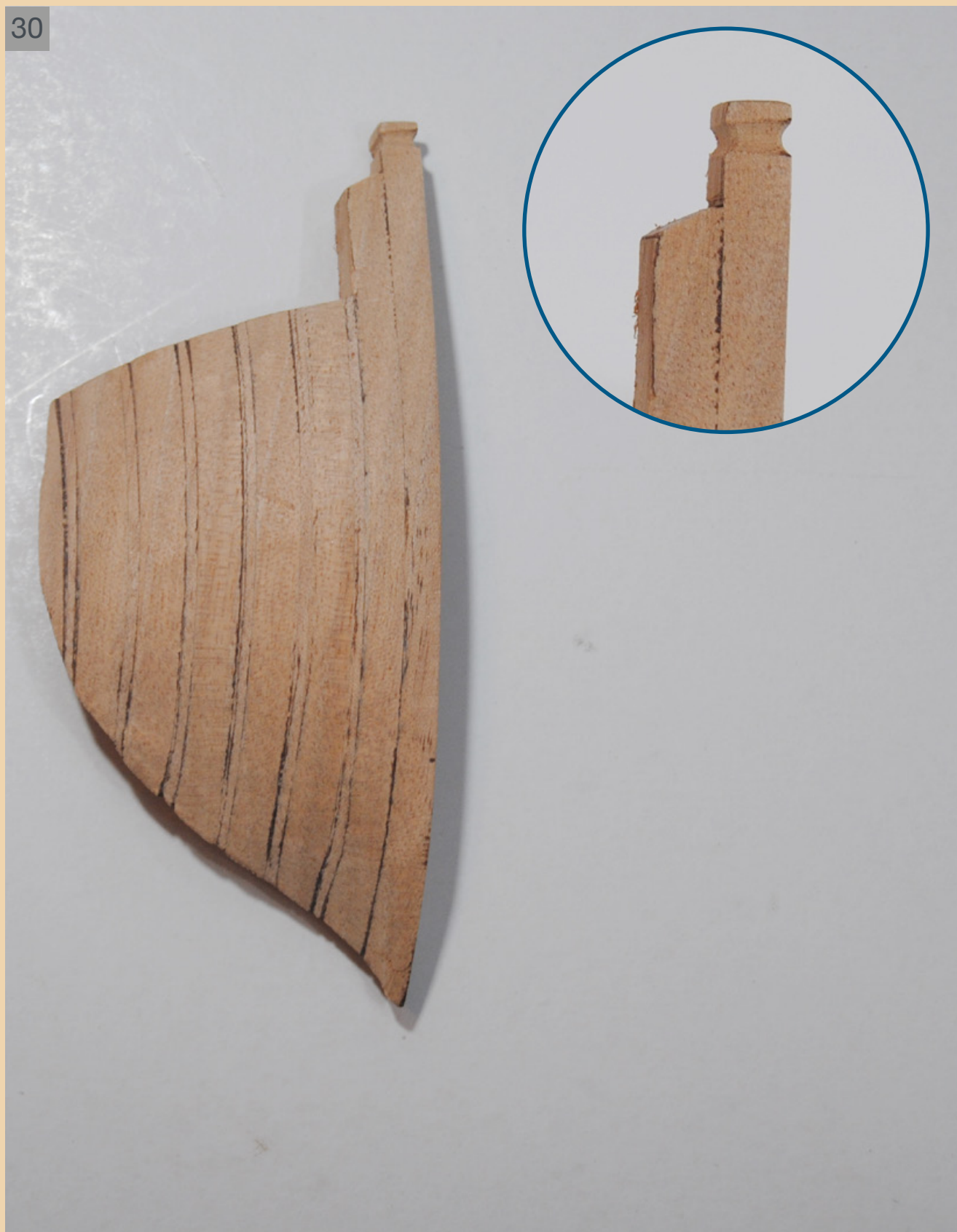
28 Completed hawse piece - keel side lateral view.

29



29 Completed hawse piece - frame L side lateral view.

30



30 Completed hawse piece - front view. Work hawse piece A edge with a round file, as in the enlarged picture.