

BUILD THE LEGENDARY

H.M.S.

BOUNTY

ADMIRALTY MODEL

PACK 05



BUILD THE LEGENDARY H.M.S. BOUNTY

ADMIRALTY MODEL

PHASE

PAGE

35	Frame 7	156
36	Frame 8	160
37	Frame 14	164
38	Frame D	168
39	Frame E	170
40	Frame F	174
41	Frames and Keel 1	178
42	Culverin 05	186
43	Lifeboat Yard 2	187

Design and production by Incipit srl

Assembly guide edited by Milanoedit srl - www.milanoedit.com

Published in Italy by De Agostini Publishing Italia S.p.A., 28100 Novara, Via G. da Verrazano 15

All rights reserved © 2020.

UNSUITABLE FOR CHILDREN UNDER 14. THE PRODUCT IS NOT A TOY
AND MUST BE USED UNDER ADULT SUPERVISION.

PARTS MAY BE DIFFERENT FROM THOSE PICTURED

DE AGOSTINI
MODELSPACE™
www.model-space.com

ASSEMBLY INSTRUCTIONS

PACK 05

List of Components

Lifeboat yard:
MDF board 5-10

Frames:

wooden tablet 5-01
wooden tablet 5-02
wooden tablet 5-03
wooden tablet 5-04
wooden tablet 5-05
wooden tablet 5-06

Gun Carriage:

wooden tablet 5-07
wooden tablet 5-08
wooden tablet 5-09

1 culverin
1 cannon



*** Note:** Store tablet 5-07, 5-08, 5-09 and the cannon with care, you will use them in the next packs.



5-07



5-08



5-09



5-10



5-01



5-02



5-03



5-04



5-05

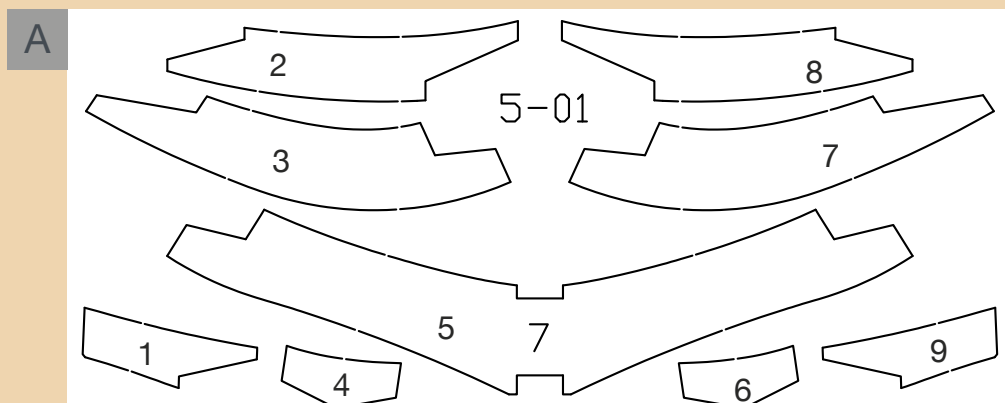


5-06

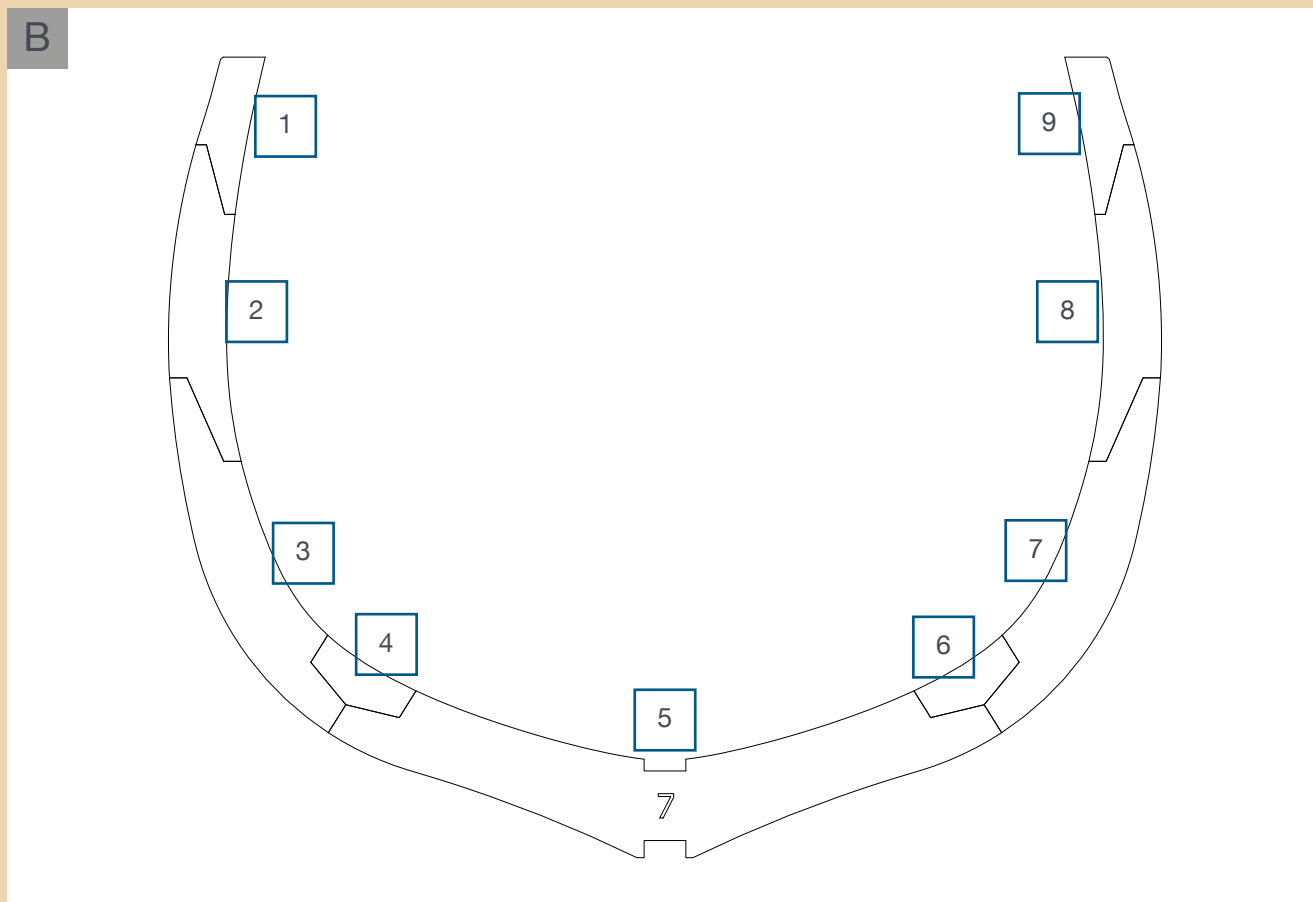
PHASE 35

Frame 7

Print the template of frame 7 in 1:1 scale on A4 size paper.



A Drawing of tablet 5-01



B Place the pieces of the frame 7 as shown in picture B.

1



1

Frame 7
tablet 5-01.

2



2

Glue the pieces of the frame and before the glue dries, superimpose it onto the 1:1 scale template to check if the pieces have been properly placed.

3



3

Completed frame 7.

4



4

Cut out the templates. Glue the blue template onto the part marked with a number following the outer edge of the frame.

5



5

Turn the frame over and glue the red template onto it following the inner edge of the frame.

6



6

Gently file the inner part of the frame from the inner edge of the blue template to the inner edge of the red template on the other side of the frame.

7



7

Gently file the outer part of the frame from the outer edge of the red template to the outer edge of the blue template on the other side of the frame.

8



8

Remove the blue template from the frame on the side marked with a number.

9



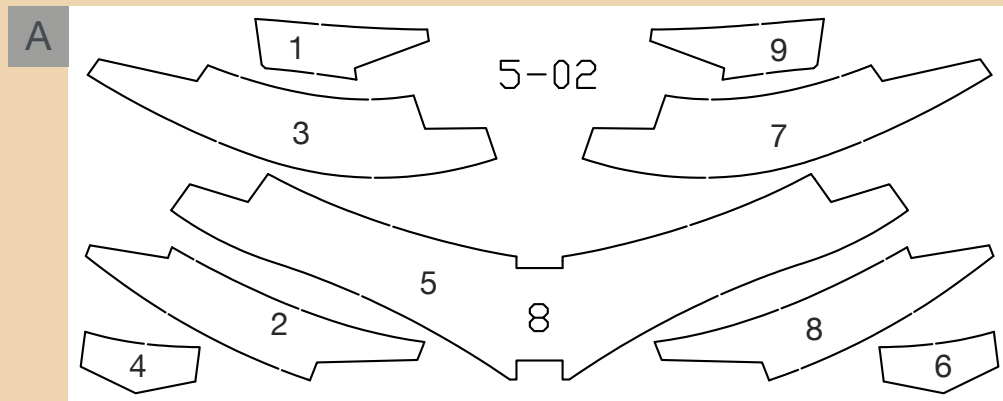
9

Remove the red template from the other side of the frame.

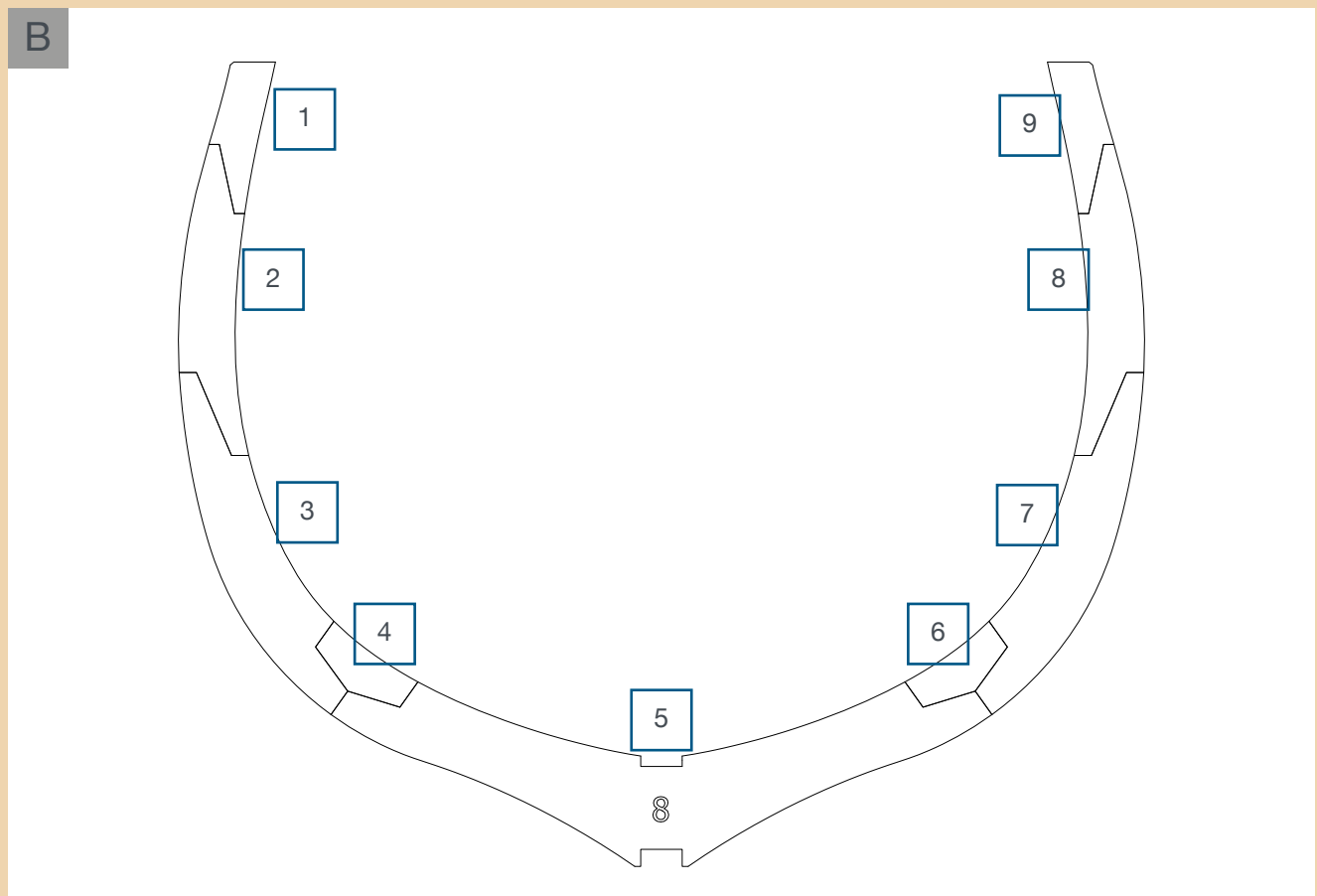
PHASE 36

Frame 8

Print the template of frame 8 in 1:1 scale on A4 size paper.

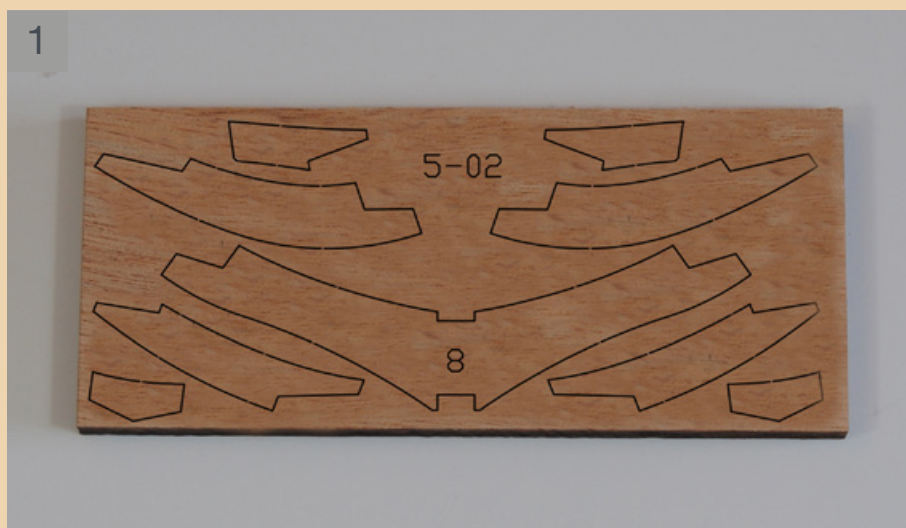


A Drawing of
tablet 5-02



B Place the pieces of the frame 8 as shown in picture B.

1



1

Frame 8
tablet 5-02.

2



2

Glue the pieces of the frame and, before the glue dries, superimpose it onto the 1:1 scale template to check if the pieces have been properly placed.

3



3

Completed frame 8.

4



4

Cut out the templates. Glue the blue template onto the part marked with a number following the outer edge of the frame.

5



5

Turn the frame over and glue the red template onto it following the inner edge of the frame.

6



6

Gently file the inner part of the frame from the inner edge of the blue template to the inner edge of the red template on the other side of the frame.

7



7

Gently file the outer part of the frame from the outer edge of the red template to the outer edge of the blue template on the other side of the frame.

8



8

Remove the blue template from the frame on the side marked with a number.

9



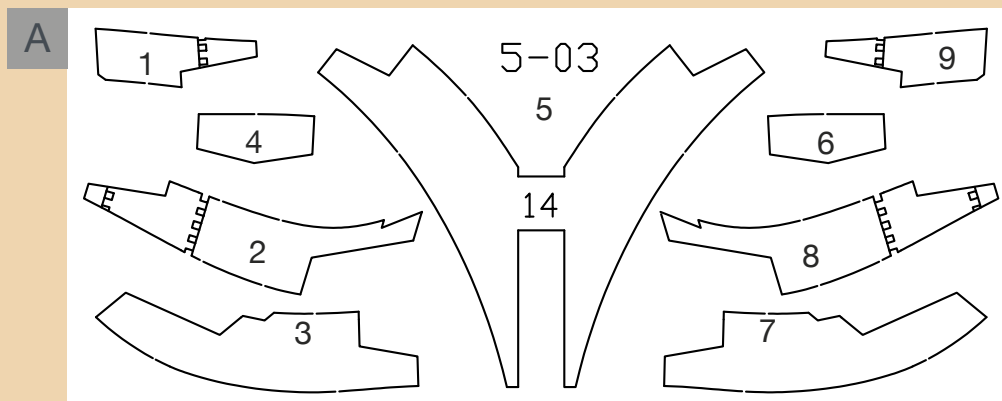
9

Remove the red template from the other side of the frame.

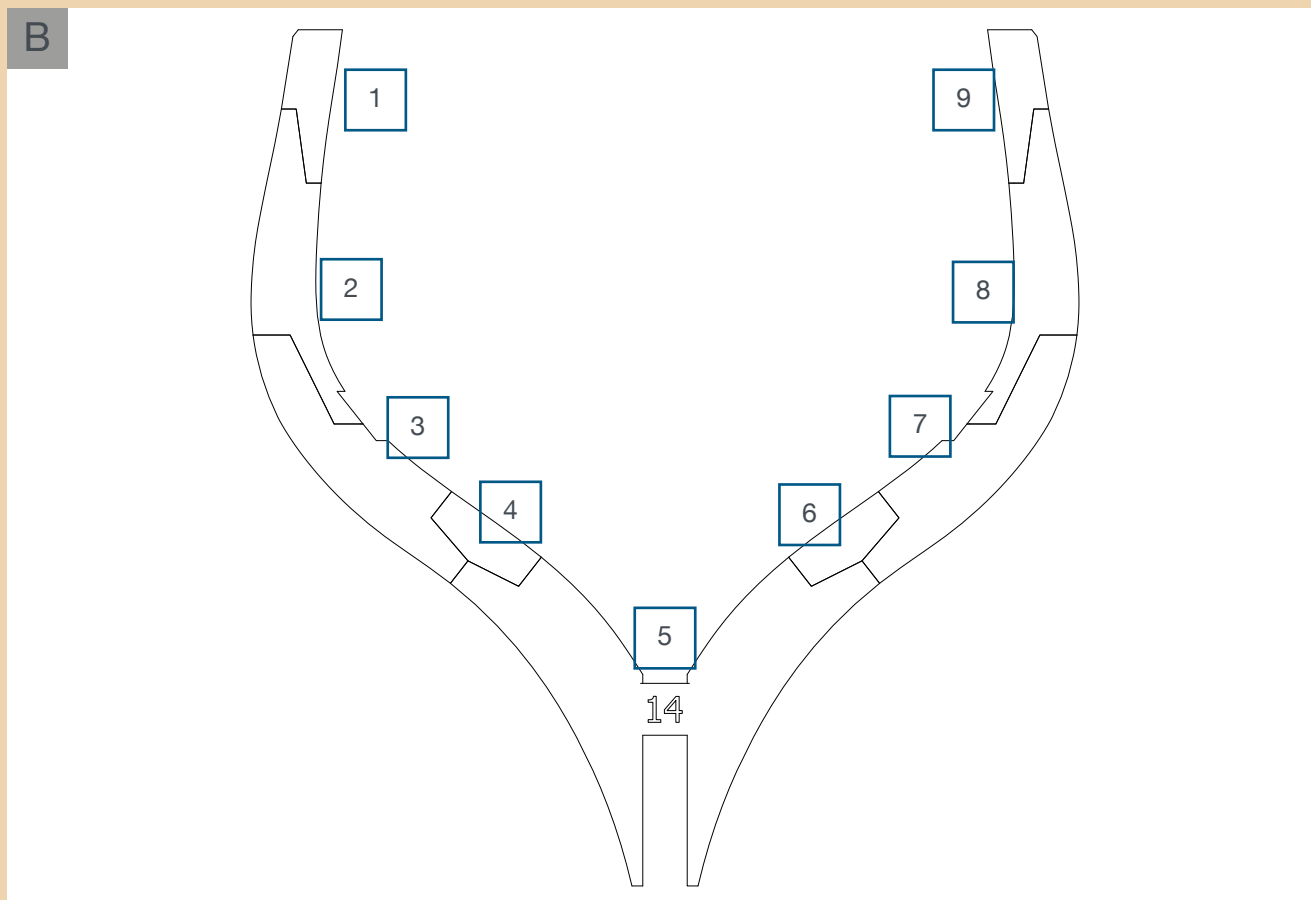
PHASE 37

Frame 14

Print the template of frame 14 in 1:1 scale on A4 size paper.



A Drawing of tablet 5-03



B Place the pieces of the frame 14 as shown in picture B.

1



1

Frame 14
tablet 5-03.

2



2

Glue the pieces of the frame and, before the glue dries, superimpose it onto the 1:1 scale template to check if the pieces have been properly placed.

3



3

Completed frame 14.

4



4

Cut out the templates. Glue the blue template onto the part marked with a number following the outer edge of the frame.

5



5

Turn the frame over and glue the red template onto it following the outer edge of the frame.

6



6

Gently file the outer part of the frame from the outer edge of the blue template to the outer edge of the red template on the other side of the frame.

7



7

Gently file the inner part of the frame from the inner edge of the red template to the inner edge of the blue template on the other side of the frame.

8



8

Remove the blue template from the frame on the side marked with a letter.

9



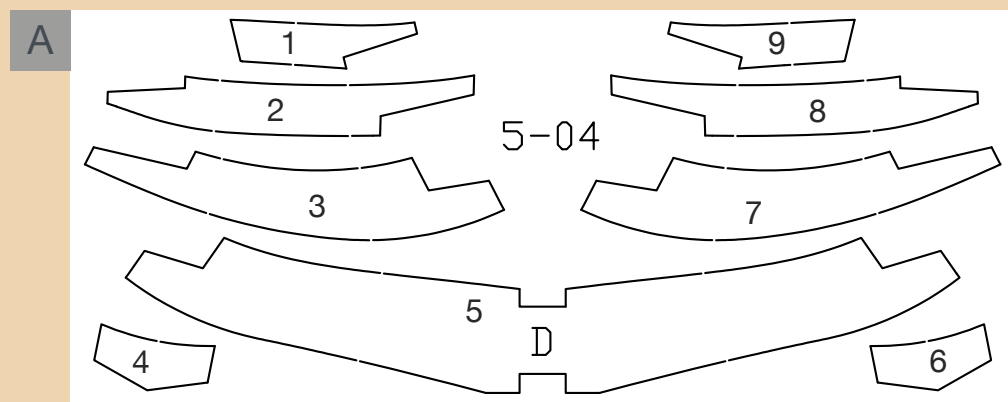
9

Remove the red template from the other side of the frame.

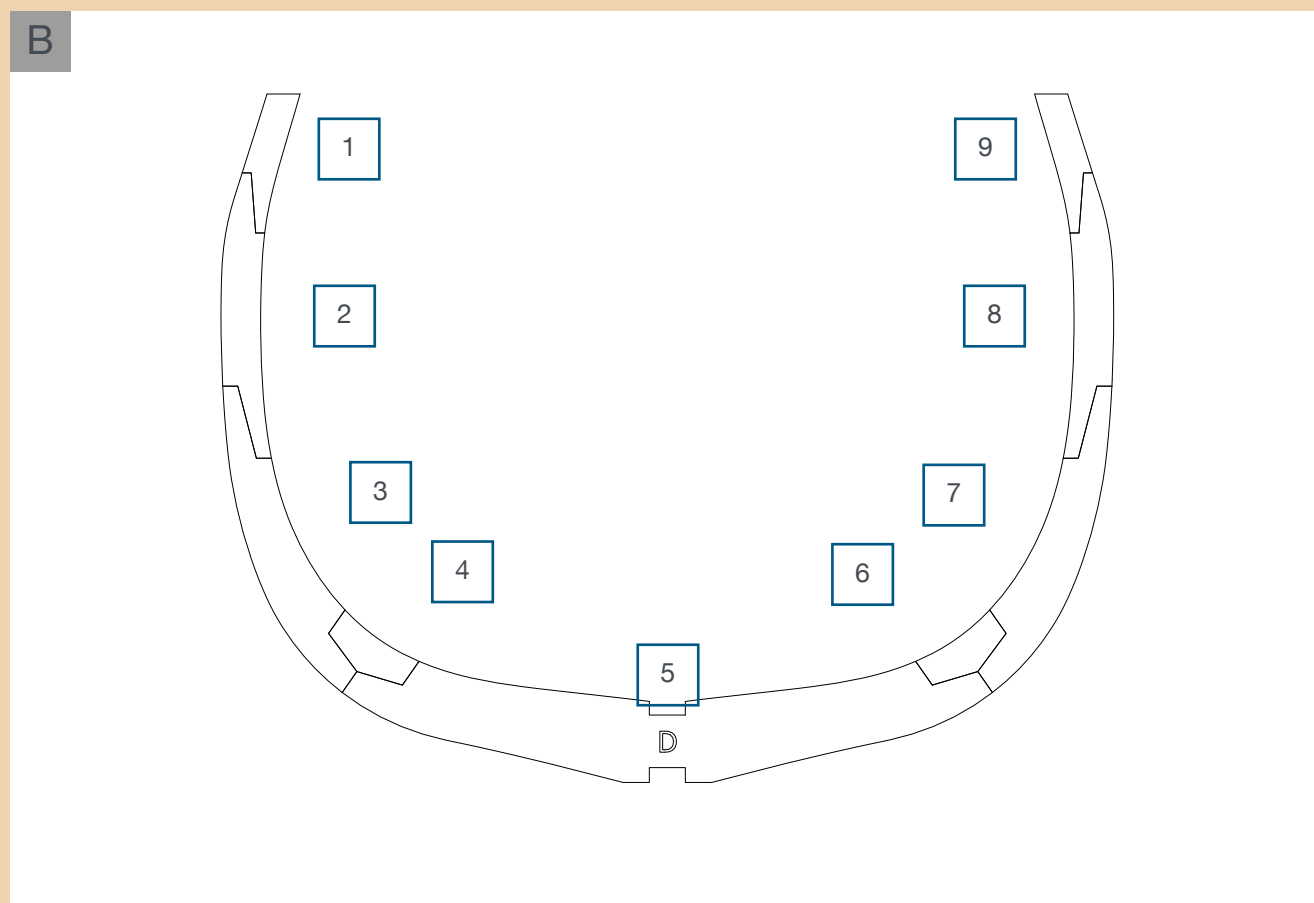
PHASE 38

Frame D

Print the template of frame D in 1:1 scale on A4 size paper.

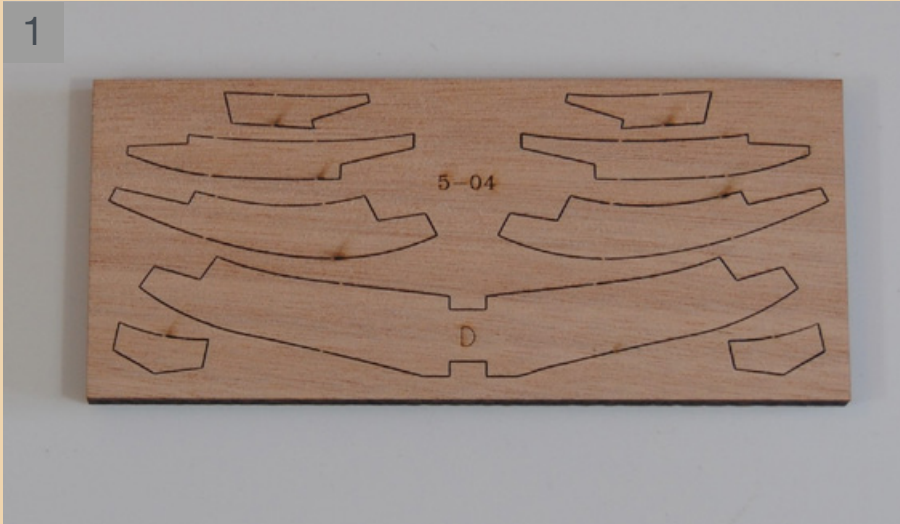


A Drawing of tablet 5-04



B Place the pieces of the frame D as shown in picture B.

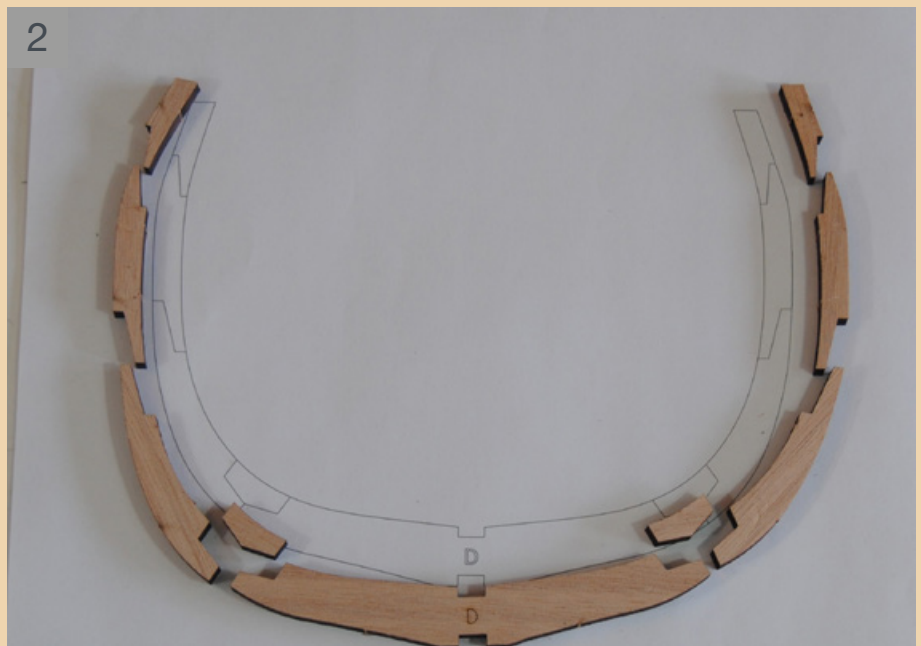
1



1

Frame D
tablet 5-04.

2



2

Glue the pieces of the frame and, before the glue dries, superimpose it onto the 1:1 scale template to check if the pieces have been properly placed.

3



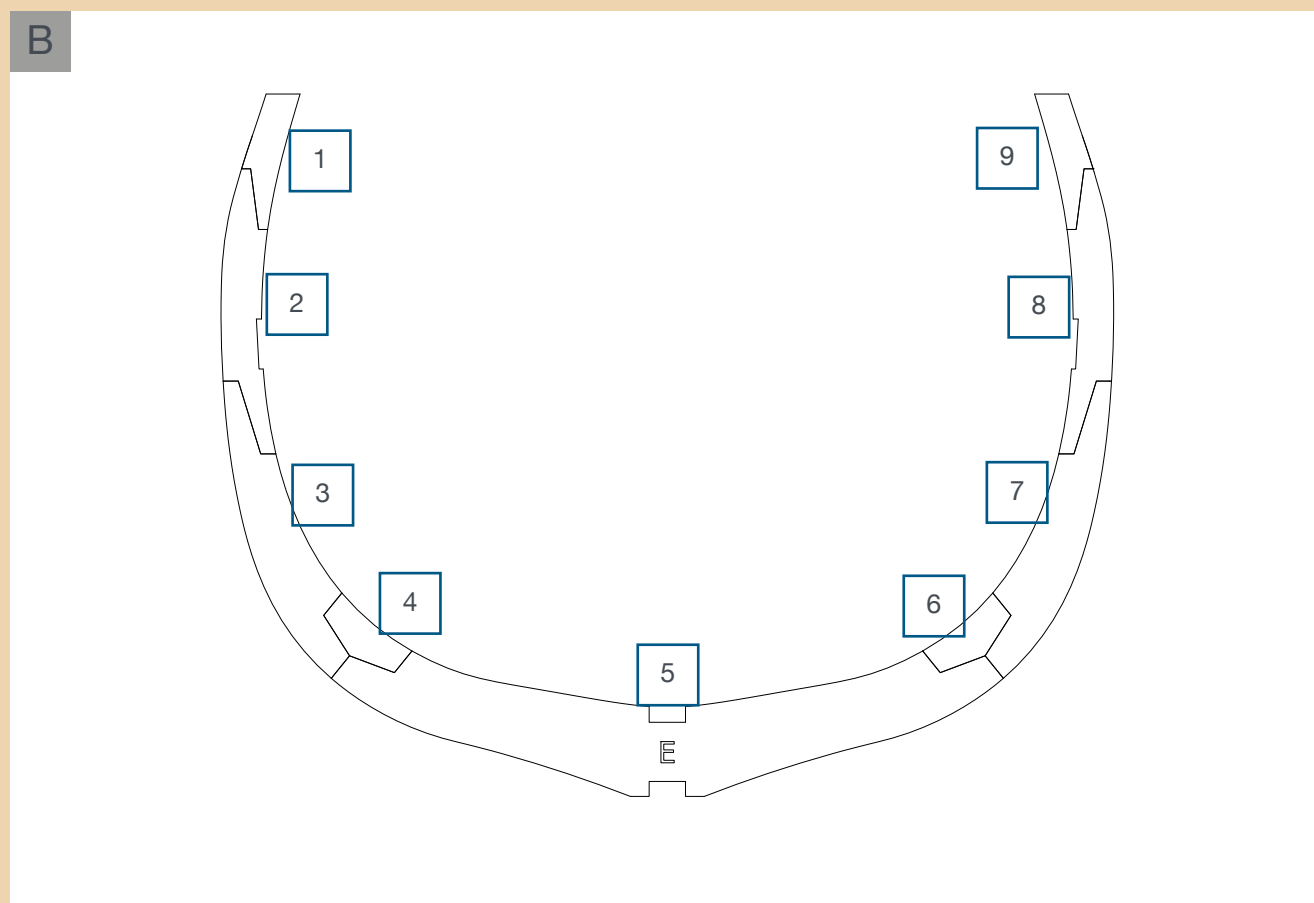
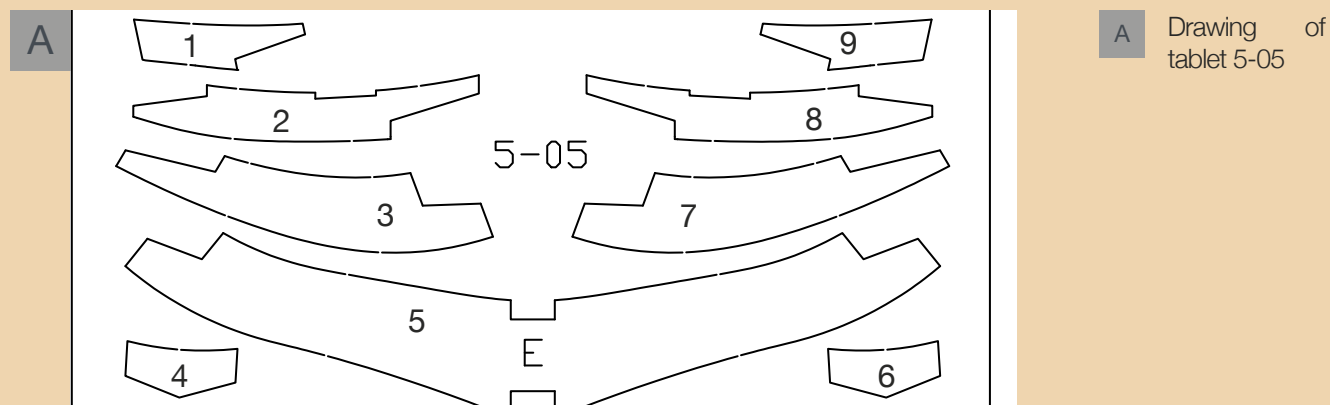
3

Completed frame D.

PHASE 39

Frame E

Print the template of frame E in 1:1 scale on A4 size paper.



B Place the pieces of the frame E as shown in picture B.

1



1

Frame E
tablet 5-05.

2



2

Glue the pieces of the frame and, before the glue dries, superimpose it onto the 1:1 scale template to check if the pieces have been properly placed.

3



3

Completed frame E.

4



4

Cut out the templates. Glue the blue template onto the part marked with a letter following the inner edge of the frame.

5



5

Turn the frame over and glue the red template onto it following the outer edge of the frame.

6



6

Gently file the outer part of the frame from the outer edge of the blue template to the outer edge of the red template on the other side of the frame.

7



7

Gently file the inner part of the frame from the inner edge of the red template to the inner edge of the blue template on the other side of the frame.

8



8

Remove the blue template from the frame on the side marked with a letter.

9



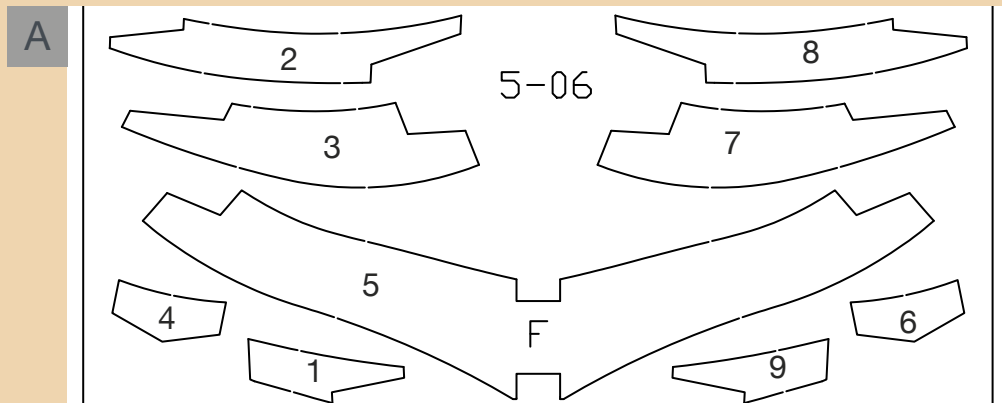
9

Remove the red template from the other side of the frame.

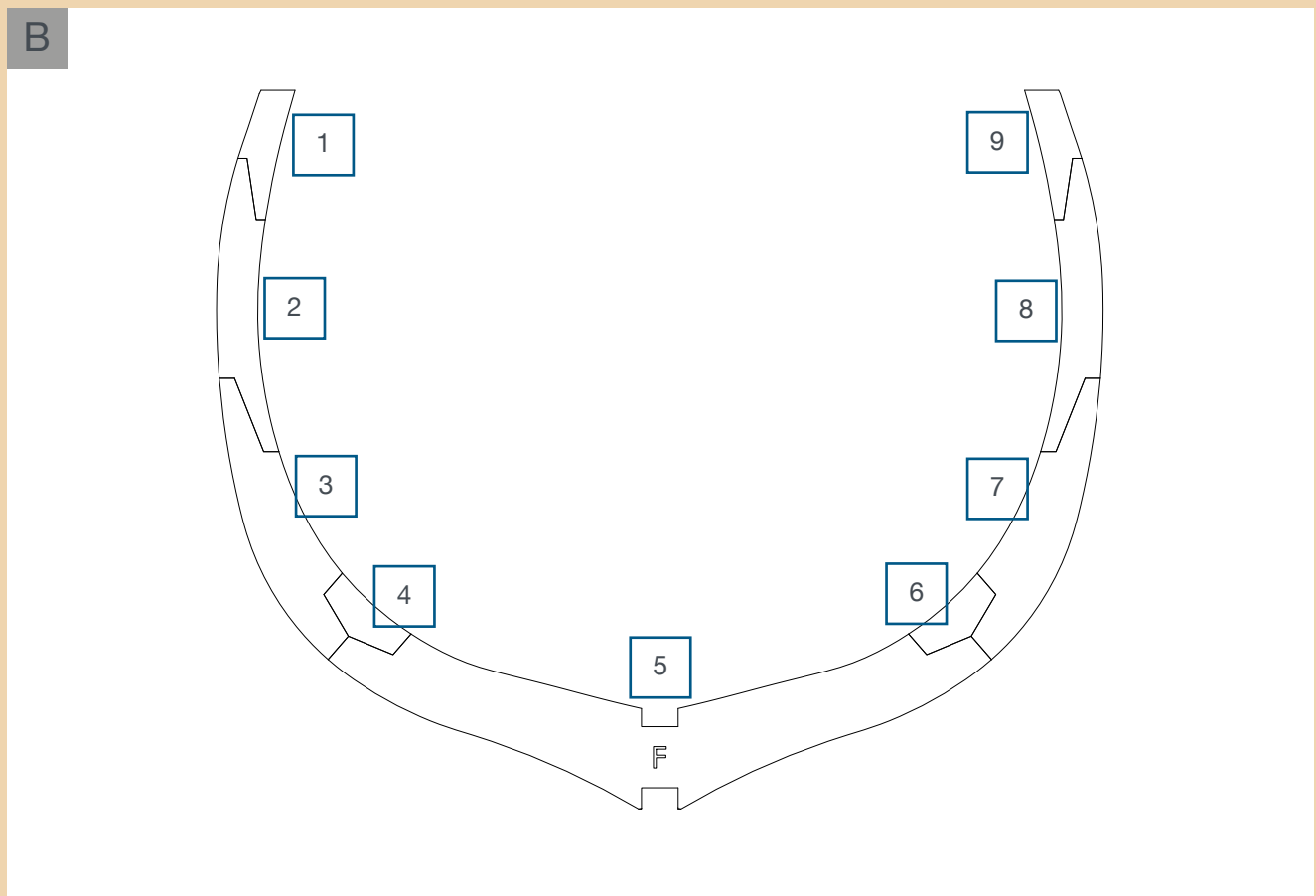
PHASE 40

Frame F

Print the template of frame F in 1:1 scale on A4 size paper.

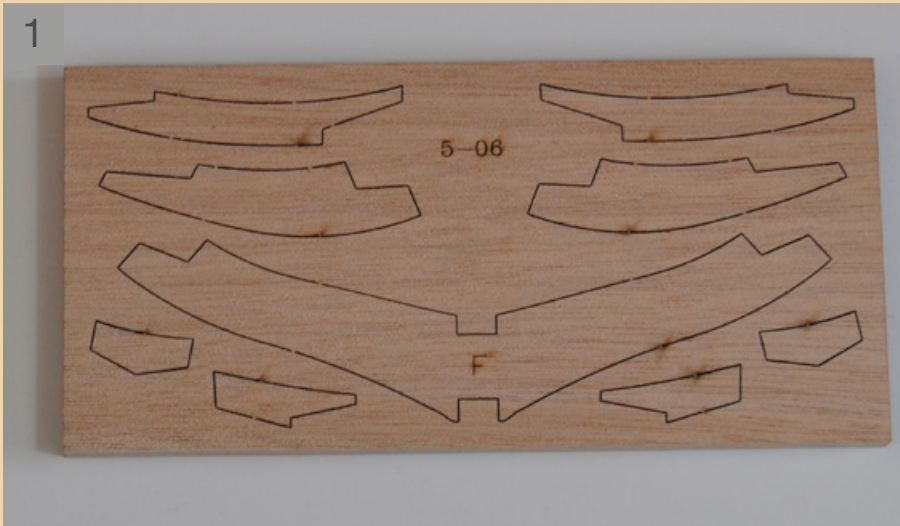


A Drawing of
tablet 5-06



B Place the pieces of the frame F as shown in picture B.

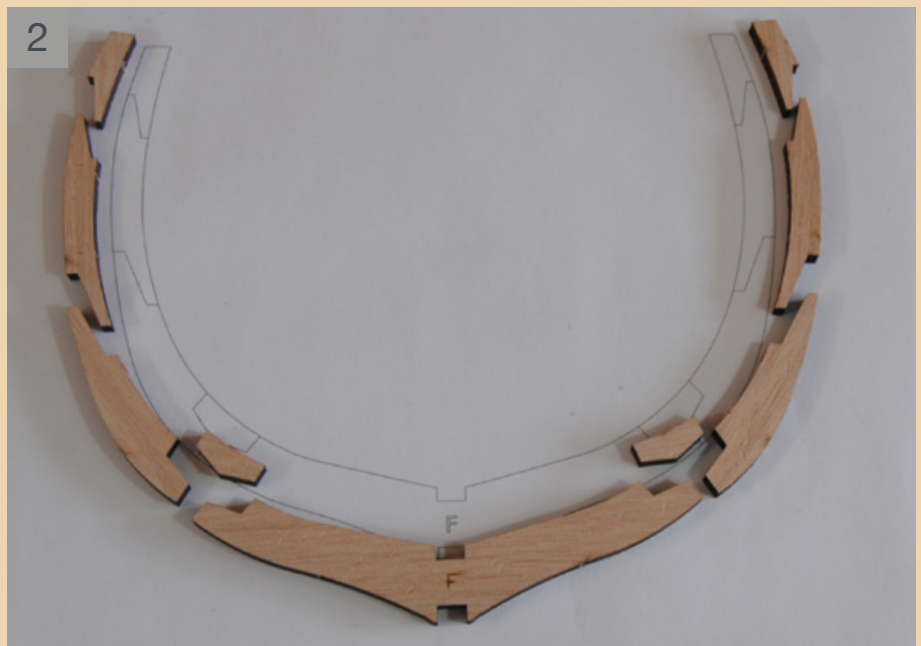
1



1

Frame F
tablet 5-06.

2



2

Glue the pieces of the frame and, before the glue dries, superimpose it onto the 1:1 scale template to check if the pieces have been properly placed.

3



3

Completed frame F.

4



4

Cut out the templates. Glue the blue template onto the part marked with a letter following the inner edge of the frame.

5



5

Turn the frame over and glue the red template onto it following the outer edge of the frame.

6



6

Gently file the outer part of the frame from the outer edge of the blue template to the outer edge of the red template on the other side of the frame.

7



7

Gently file the inner part of the frame from the inner edge of the red template to the inner edge of the blue template on the other side of the frame.

8



8

Remove the blue template from the frame on the side marked with a letter.

9



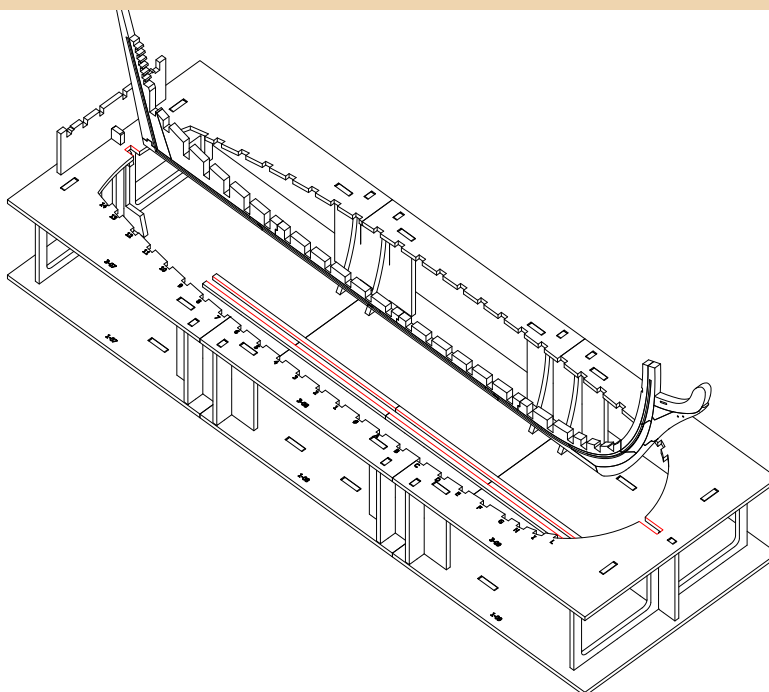
9

Remove the red template from the other side of the frame.

PHASE 41

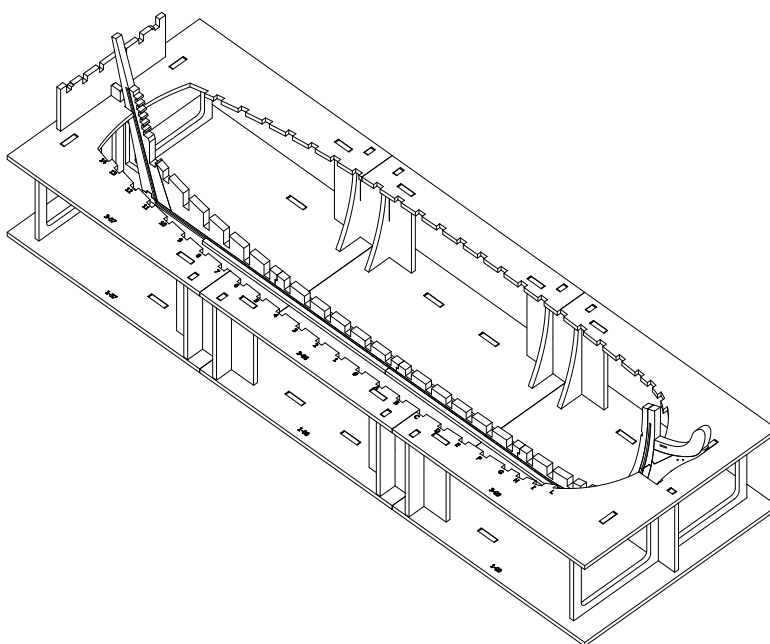
FRAMES AND KEEL 1

1



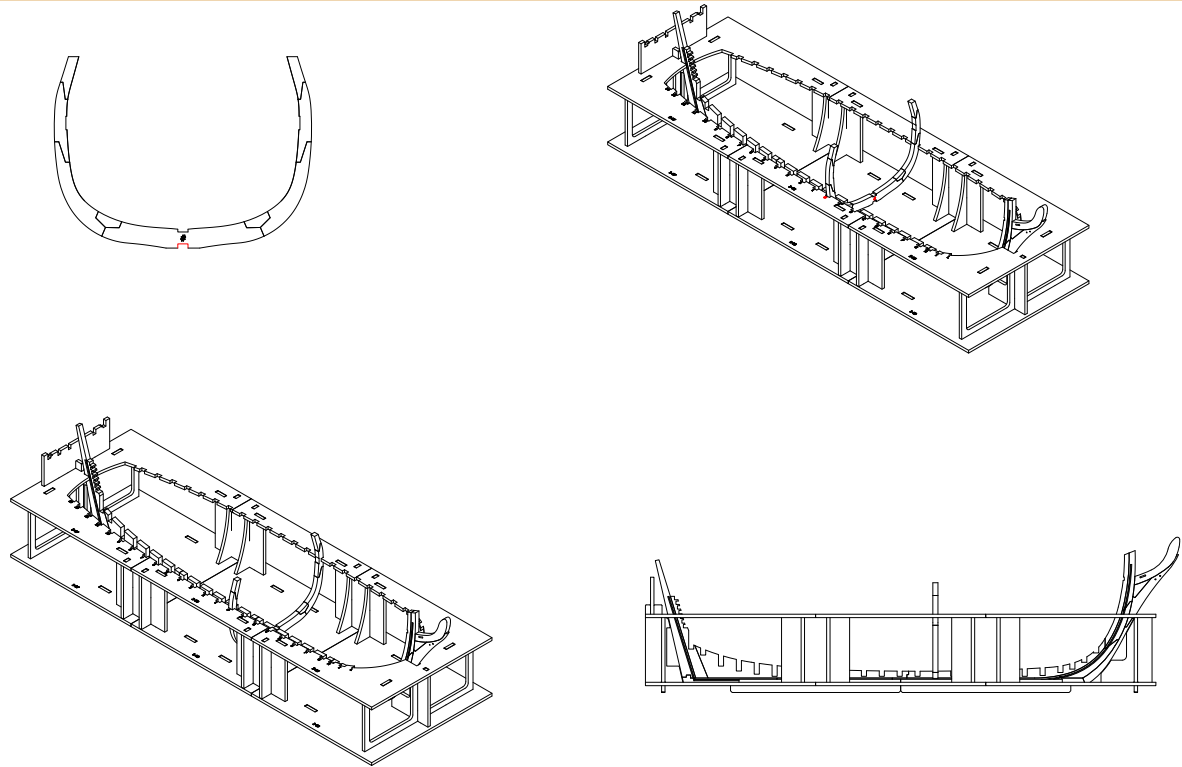
1 Insert the keel into the guides of the shipyard, marked in red in the picture.

2



2 Inserted keel.

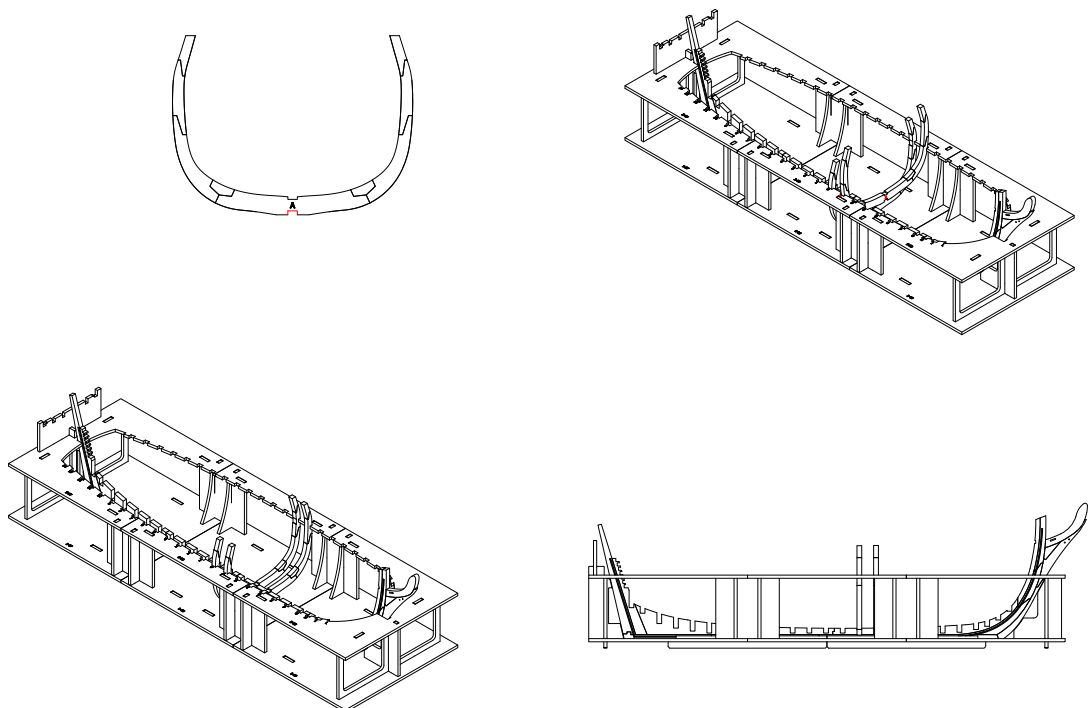
3



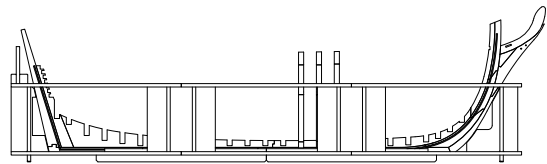
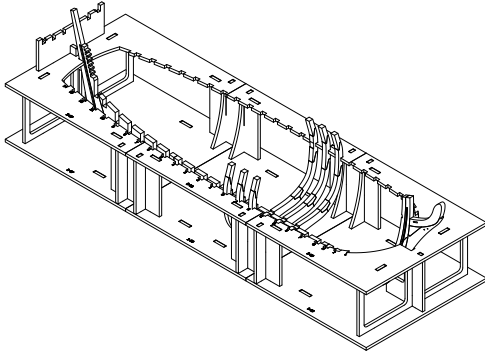
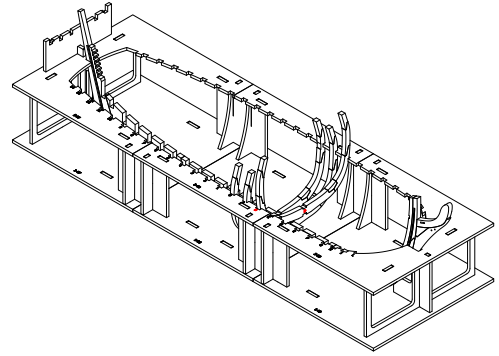
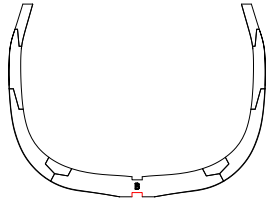
3

Take the main frame (#) and glue it into the joints of the keel, following the numbers and the letters marked on the shipyard, and applying glue onto the parts highlighted in red in the pictures. Follow the drawings on the next pages and glue all the frames (marked with the letters) with the letter towards the bow. Then glue the 2 bow hawse pieces.

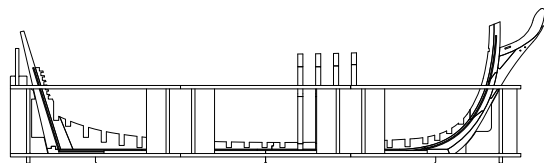
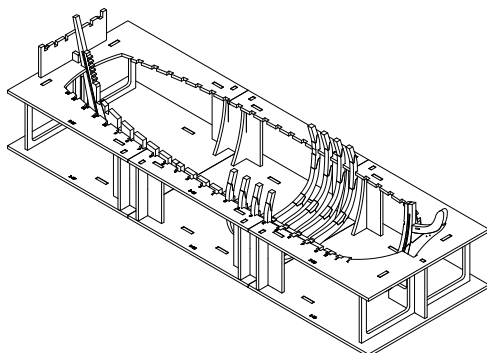
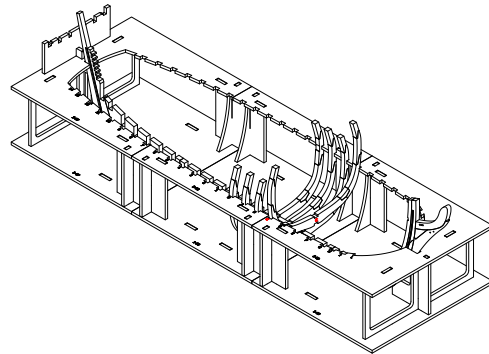
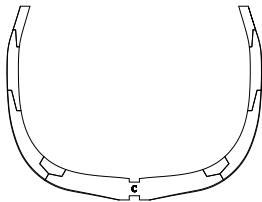
4



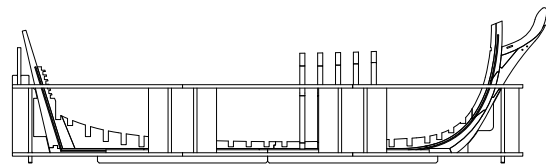
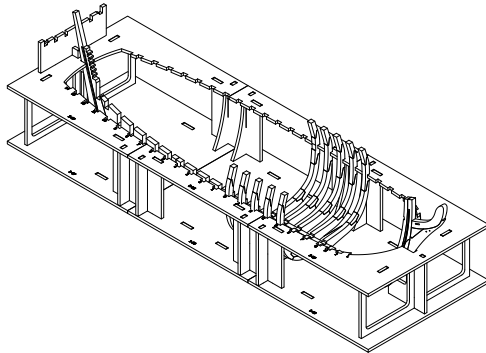
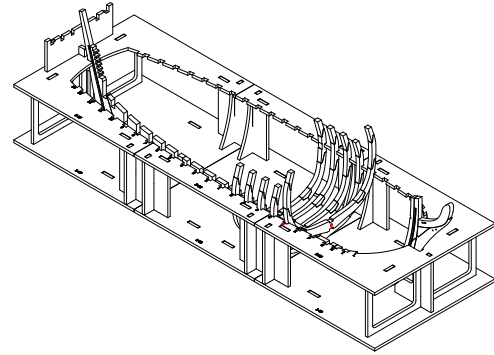
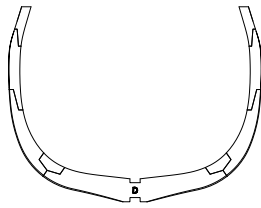
5



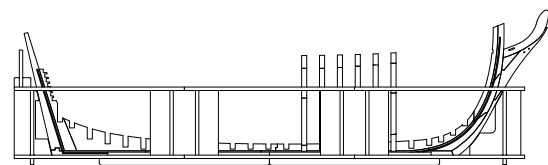
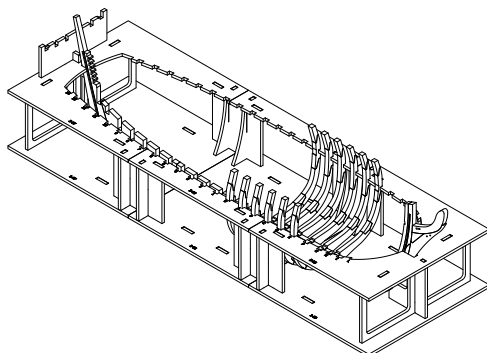
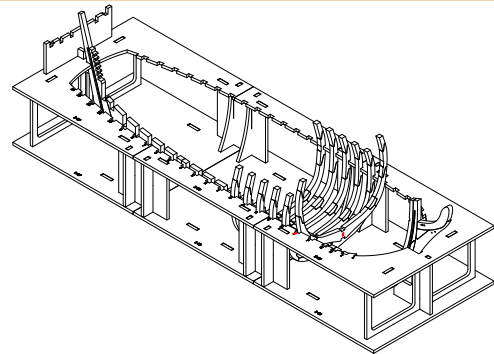
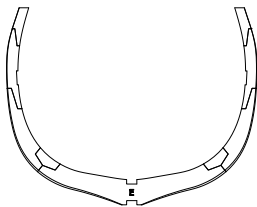
6



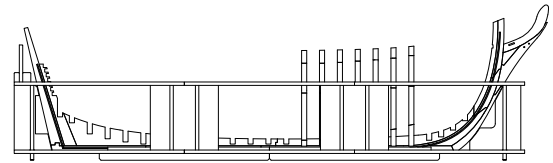
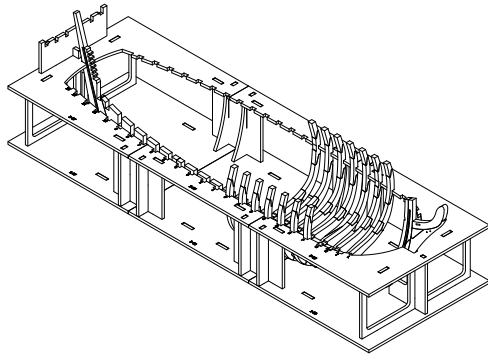
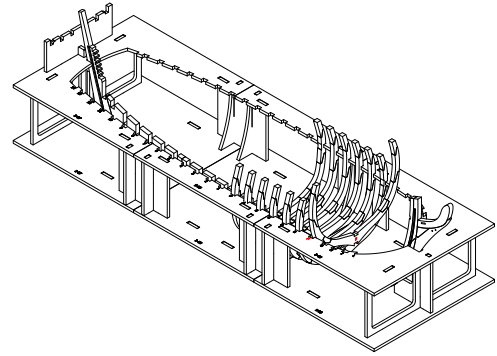
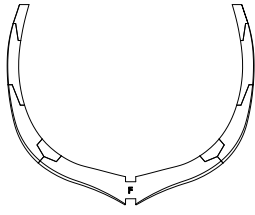
7



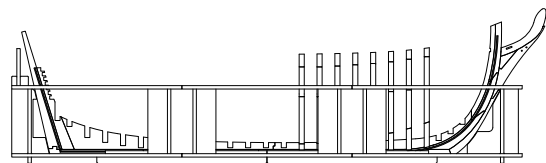
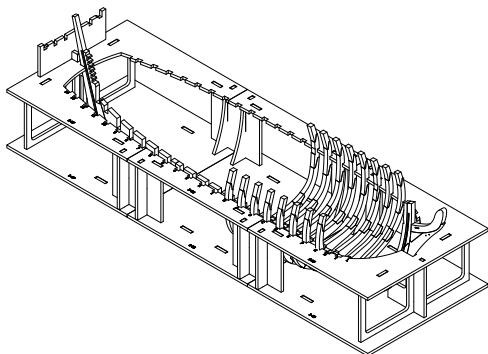
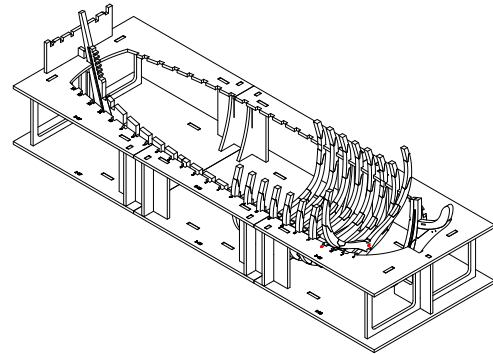
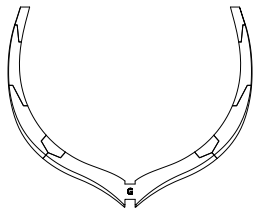
8



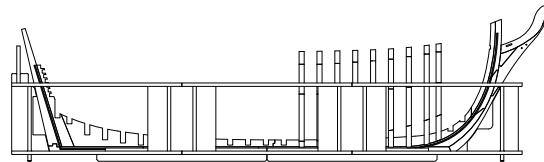
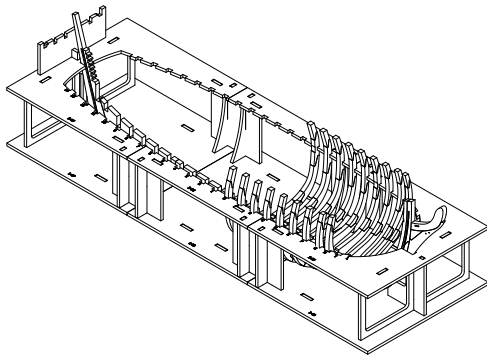
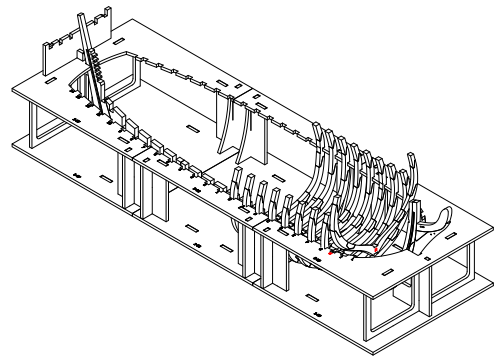
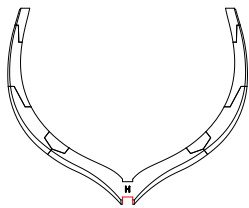
9



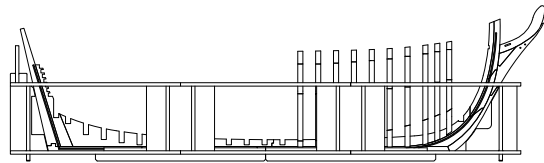
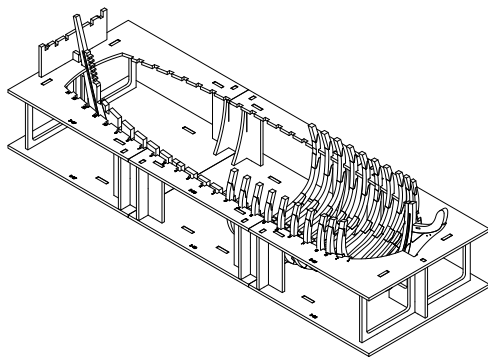
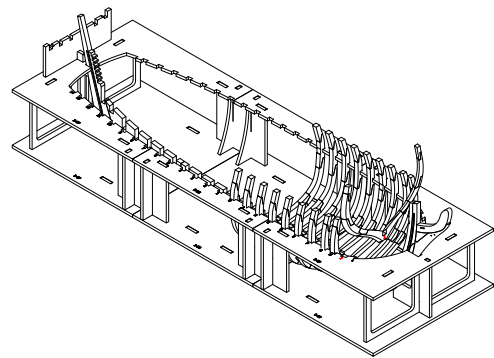
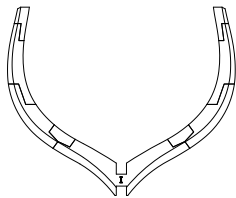
10



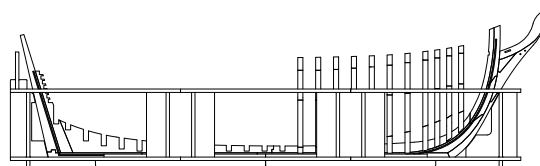
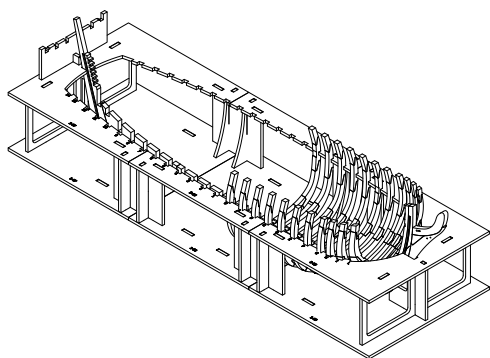
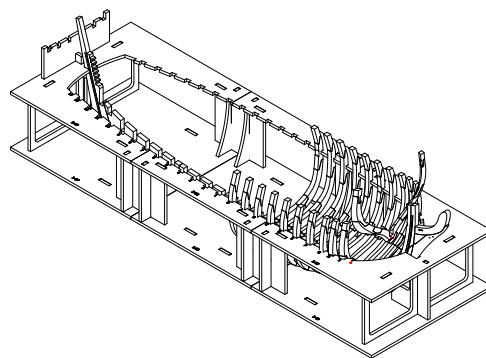
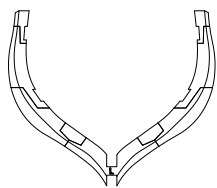
11



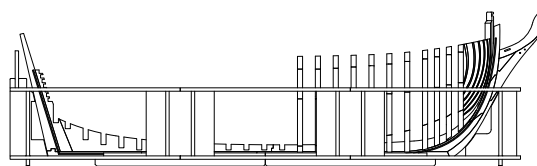
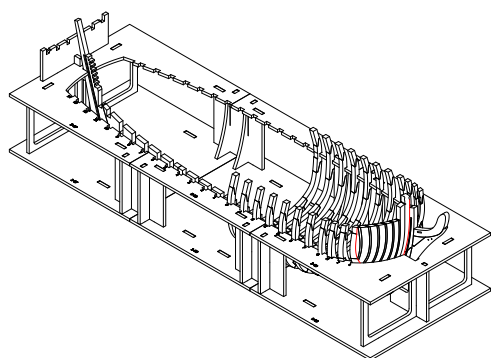
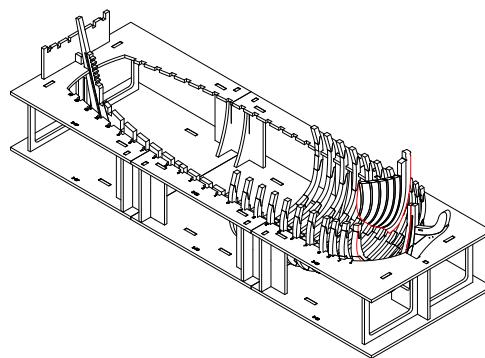
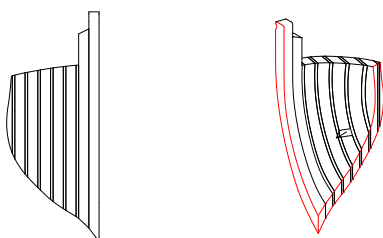
12



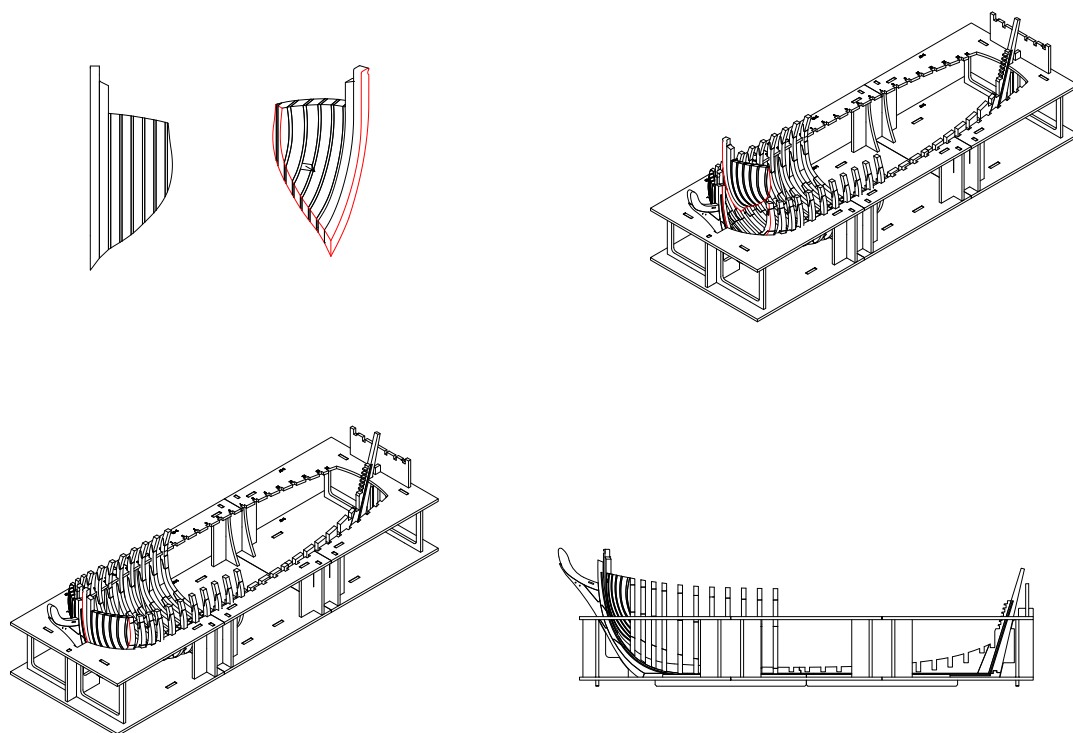
13



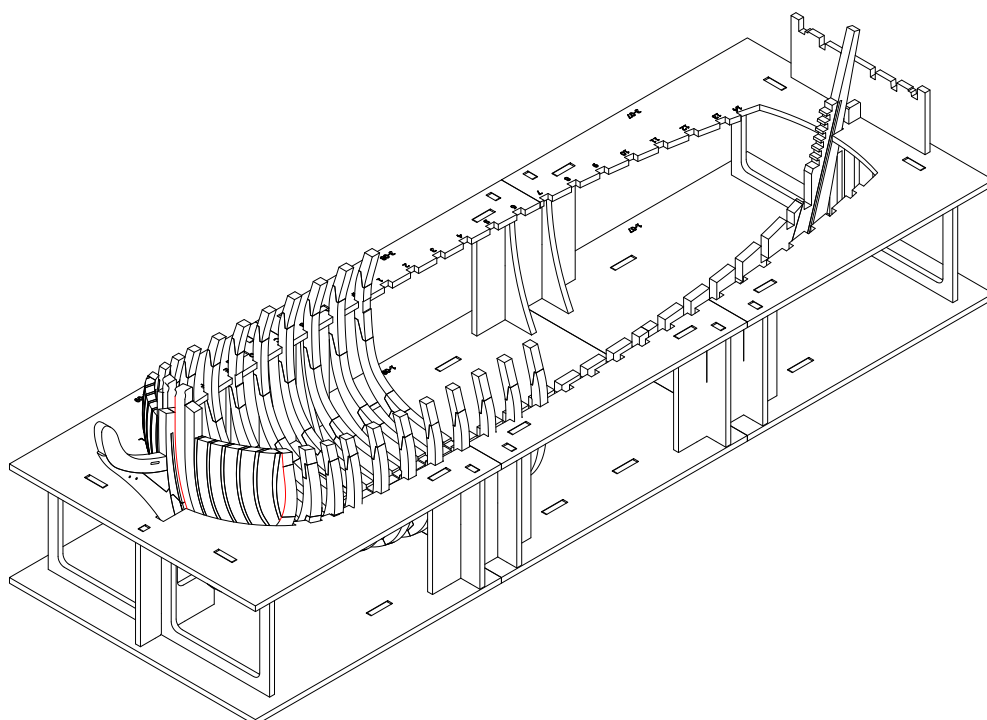
14



15



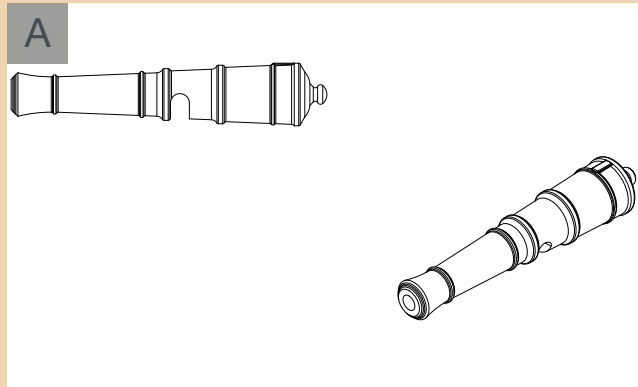
16



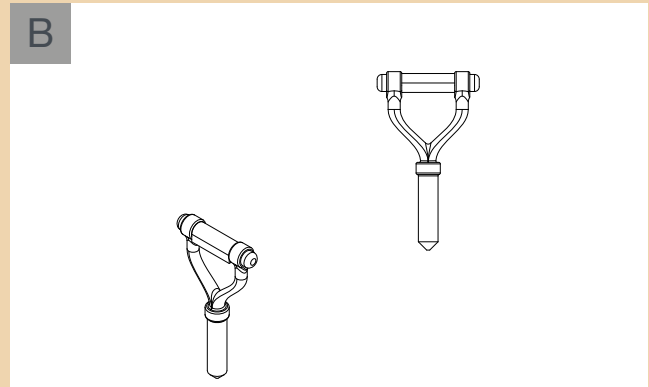
16 Final drawing of the frames glued from letter A to letter L and the main frame (#). In the next pack you will glue the frames marked with numbers.

PHASE 42

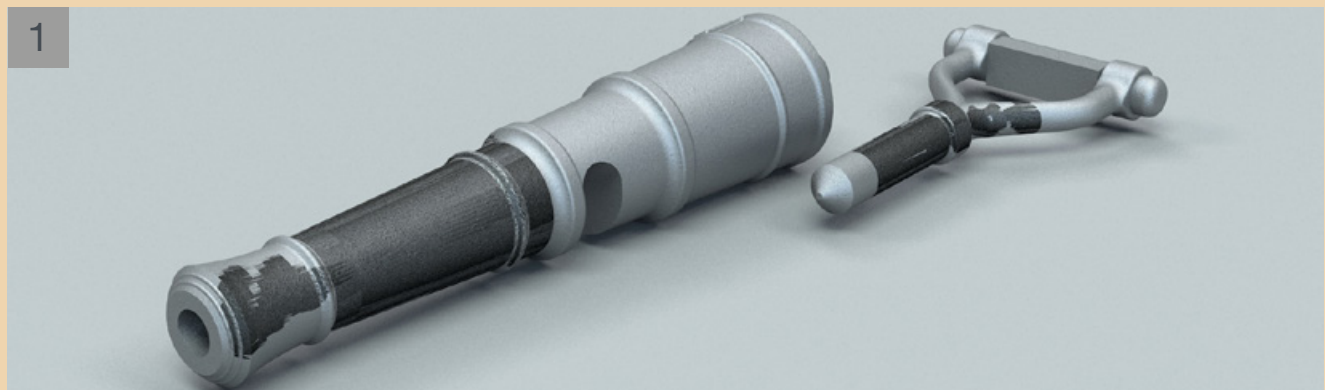
CULVERIN 05



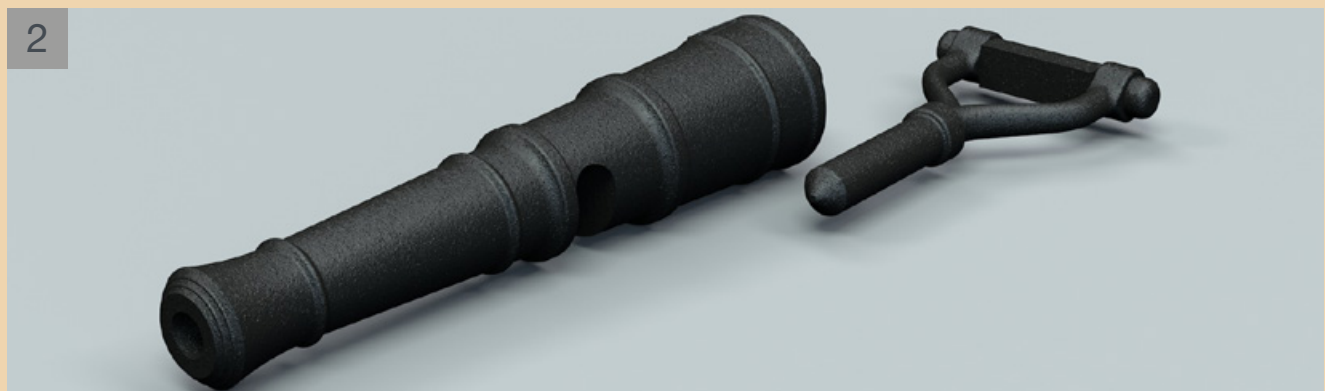
A Side and axonometric view of 1/2 pound culverin.



B Side and axonometric view of the 1/2 pound culverin fork.



1 Paint the culverin and fork with Gun Metal.

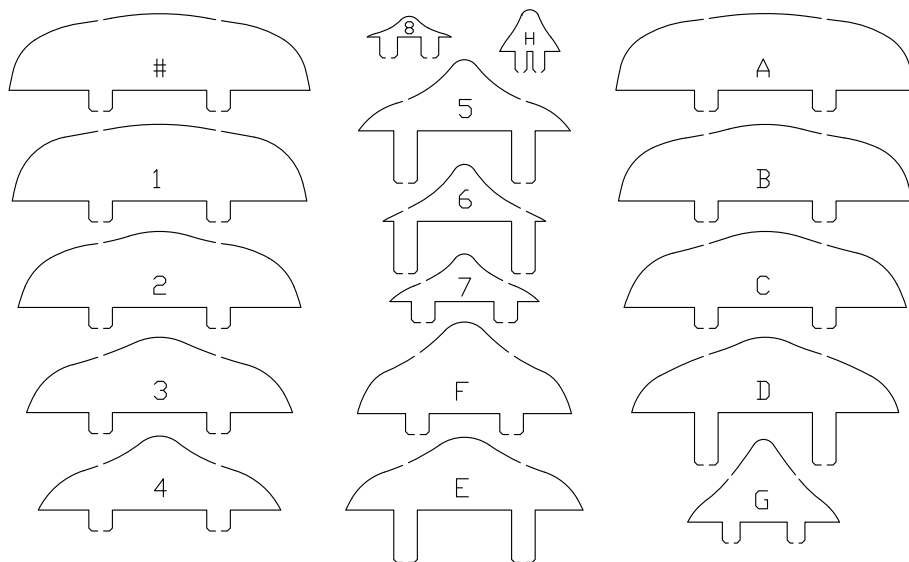


2 The painted culverin and fork. Do not assemble the culverin and the fork yet: this operation will be carried out later. Store the two pieces with care so as not to risk losing them.

PHASE 43

LIFEBOAT YARD 2

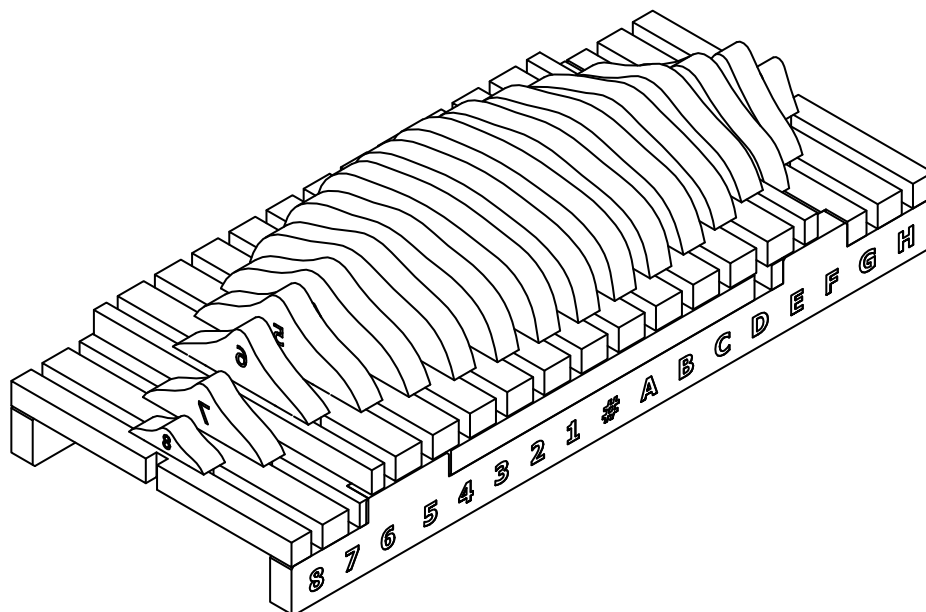
A



5-10

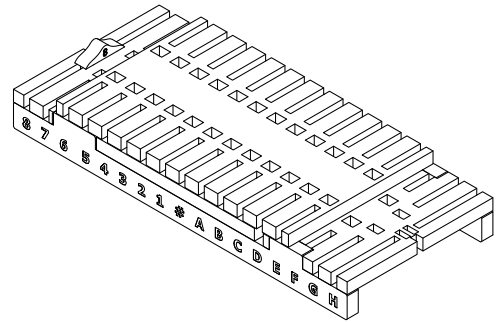
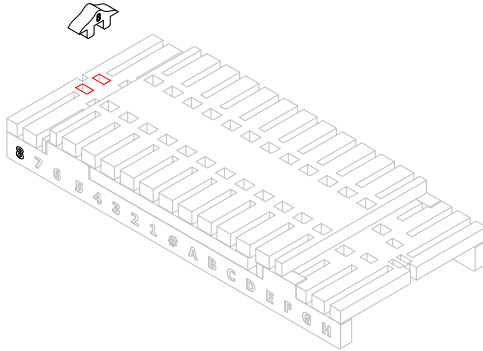
A Drawing of board 5-10.

B



Completed lifeboat yard

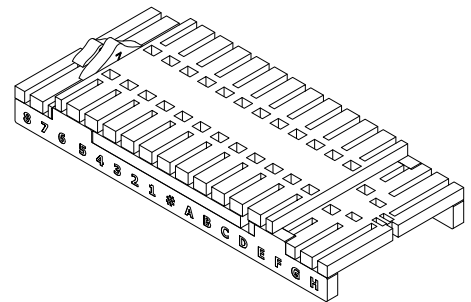
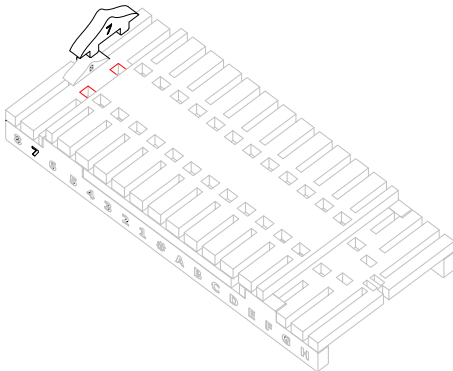
1



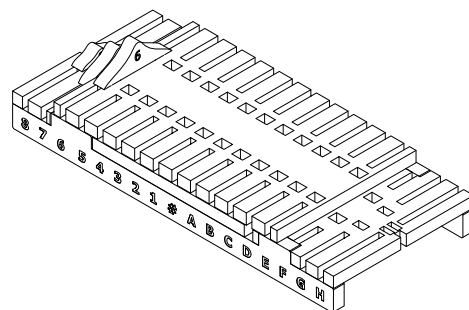
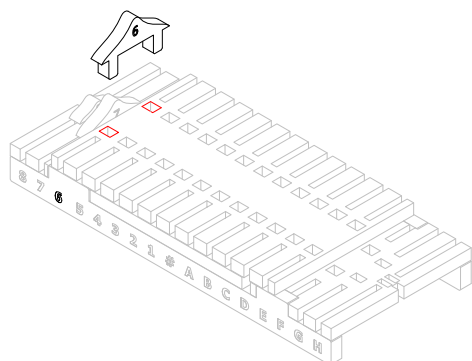
1

Detach the pieces from board 5-10 and glue them into the joints of the shipyard, applying glue onto the parts highlighted in red in the pictures. Follow the drawings on the next pages and glue the pieces marked with numbers and letters in their position.

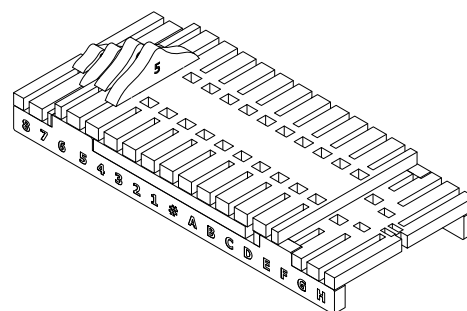
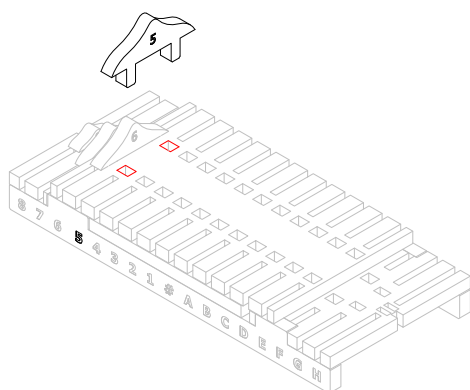
2



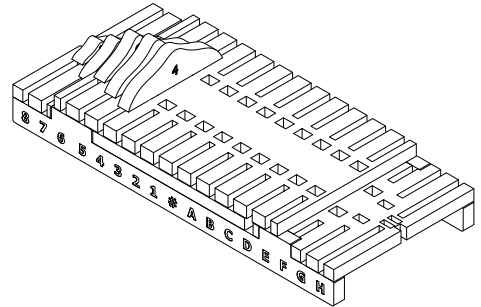
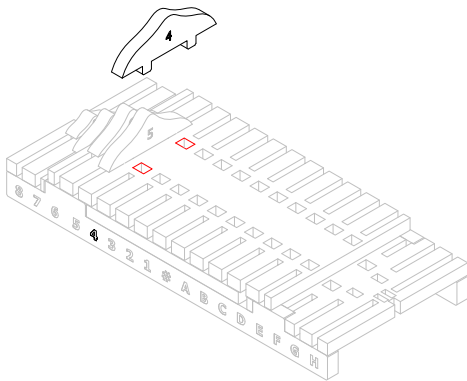
3



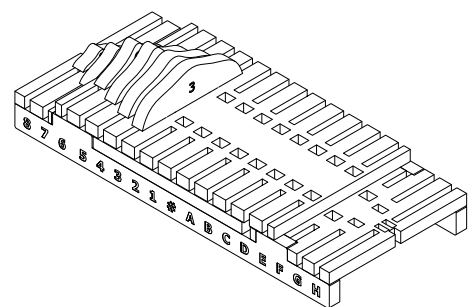
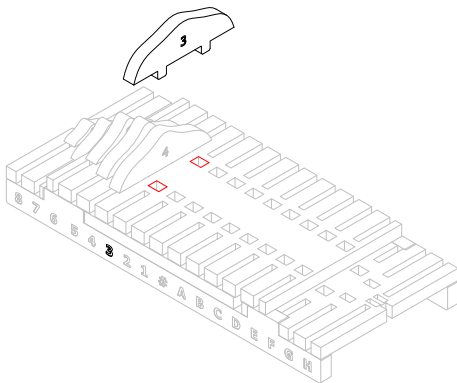
4



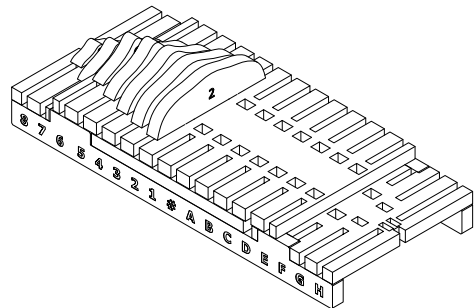
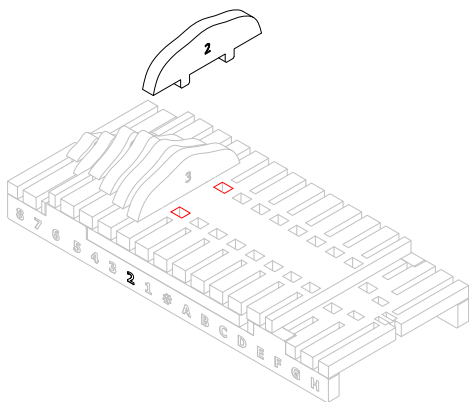
5



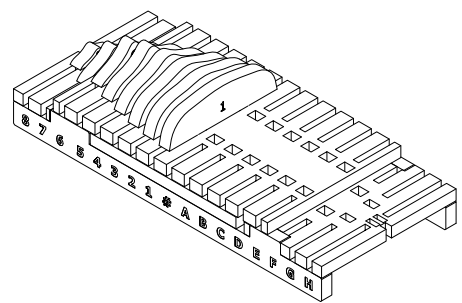
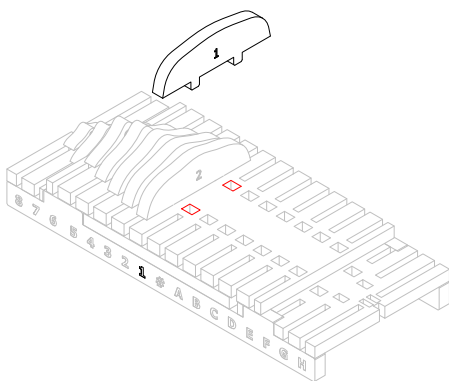
6



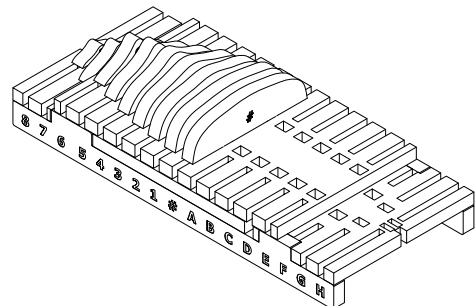
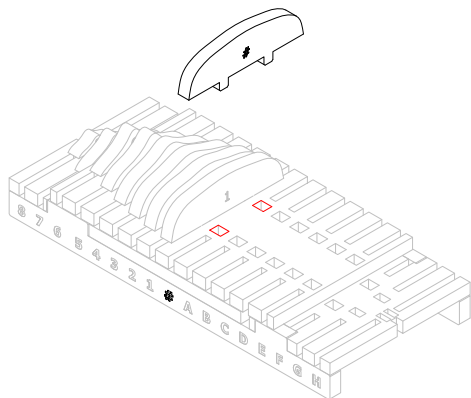
7



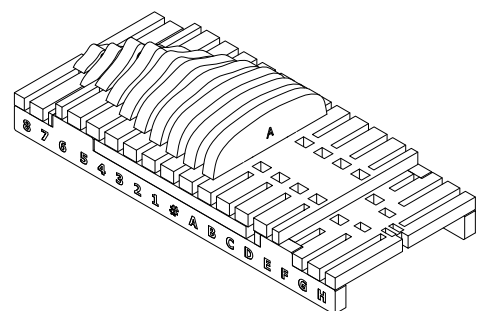
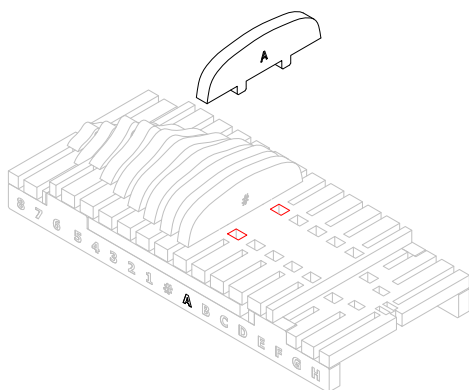
8



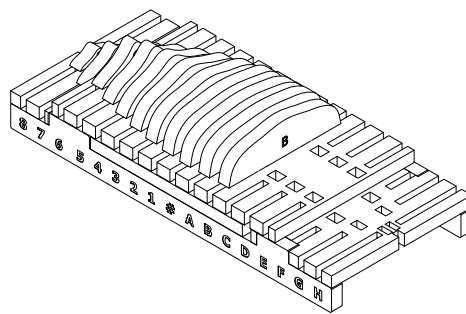
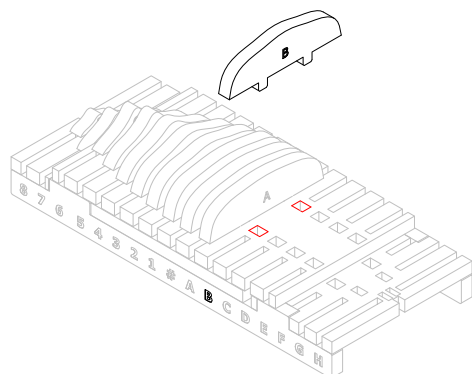
9



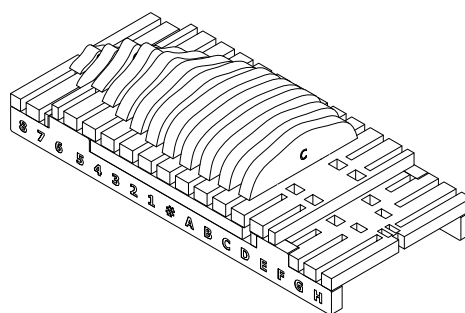
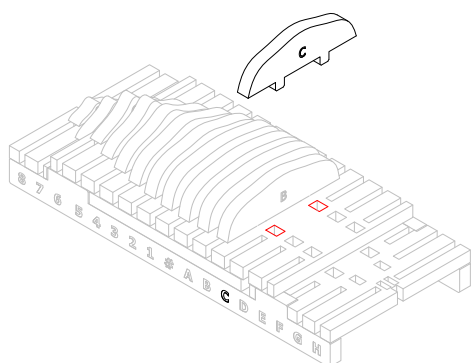
10



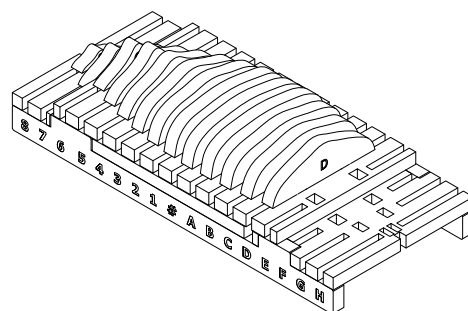
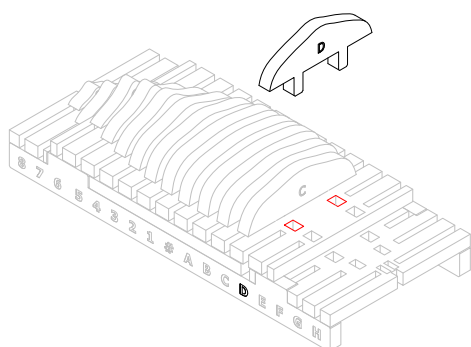
11



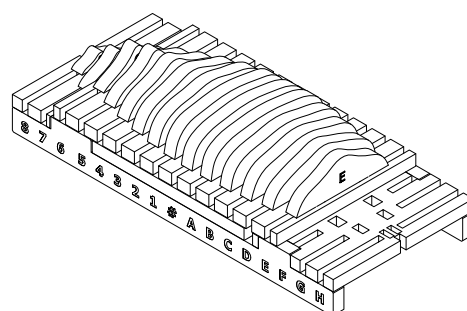
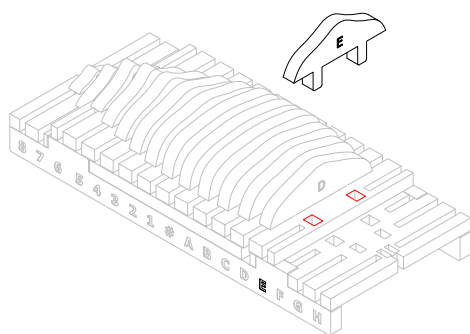
12



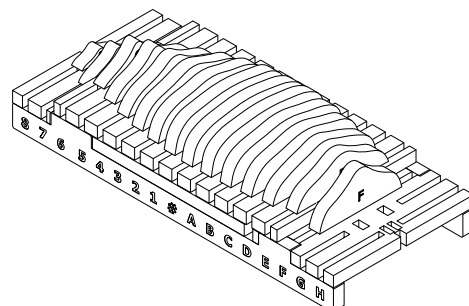
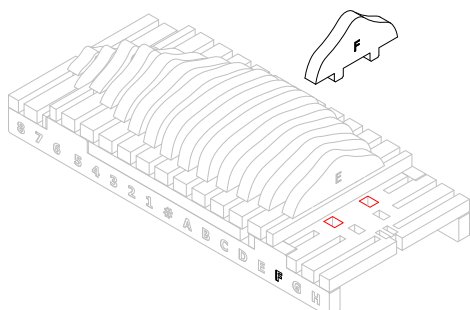
13



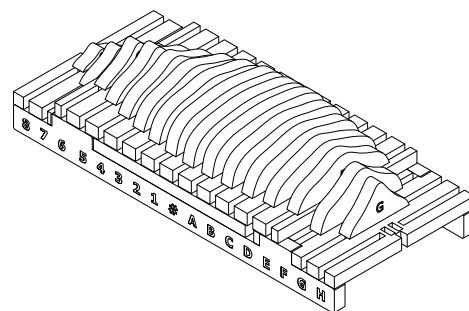
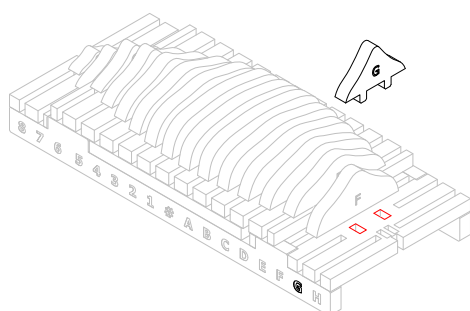
14



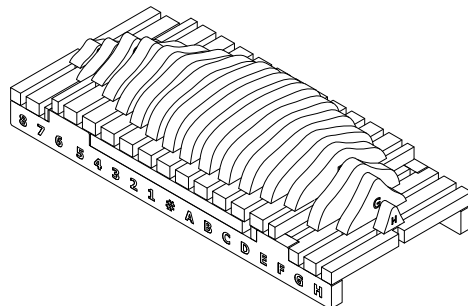
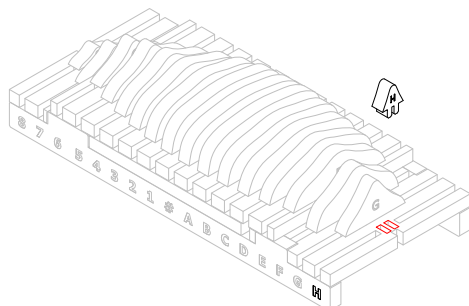
15



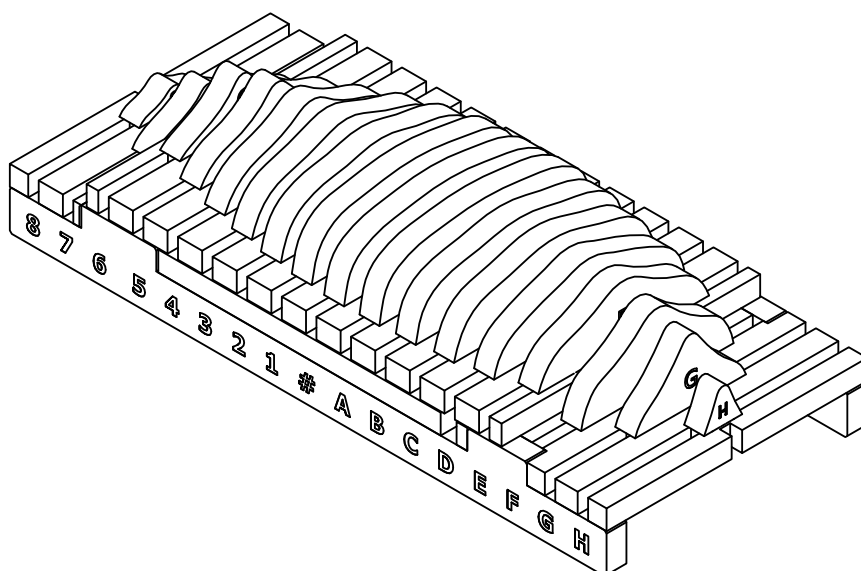
16



17



18



18 Completed lifeboat yard.