

Ayrton Senna's McLaren Honda MP4/4

DEAGOSTINI
MODEL SPACE™
www.model-space.com

McLaren Honda MP4/4

AYRTON SENNA'S 1988 TITLE-WINNING CAR



KYOSHO
THE FINEST RADIO CONTROL MODELS



All proceeds from
the licensing of
Ayrton Senna's
image are invested
in the Ayrton
Senna Institute.

Ayrton Senna's McLaren Honda MP4/4



"It is rare to see such a detailed and authentic representation of any Formula One car, and especially rare to see one that shows what goes on under the bodywork. I hope that it will give readers a much deeper understanding of the engineering solutions we employed."

Professor Gordon Murray
DIP MECH ENG SAIMechE AIED FRSA

1:8 Scale

Disc brakes

The calipers, pads and disc are reproduced to match those of the actual vehicle. It is possible to remove the wheels even after the model is complete.



Cockpit

The seatbelt is faithfully reproduced. The steering wheel is removable, just as with the real car. The front tyres move in accordance with the steering.



Engine unit

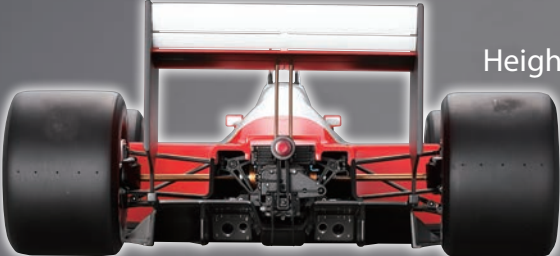
The highly detailed and authentically reproduced Honda V6 turbo engine can be removed from the rest of the model to display as a stand-alone piece.

Front view



Width: 268 mm

Rear view



Height: 124 mm

Side view



Length: 552 mm



The Senna Story

Covers the highs and lows of Ayrton Senna's career, tracing his racing history back to his first karting days in Brazil and on to his Formula One years.

Racing the MP4/4

An in-depth account of each of 1988's 16 Formula One races, the story of the all-conquering MP4/4 – and the relevant statistics.



Senna's World

The people and places that were major parts of Ayrton Senna's life – including his family, friends, team-mates and key F1 personalities.

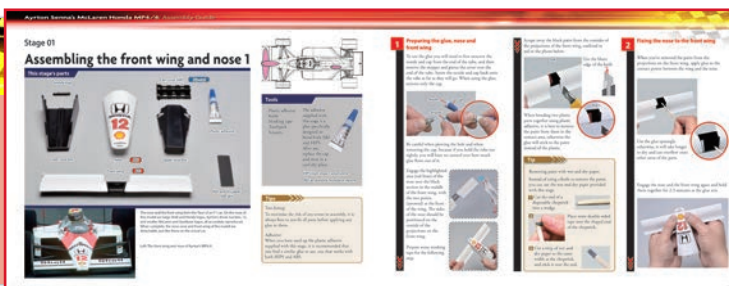
Senna's Cars

A detailed overview of the McLaren F1 cars that Ayrton Senna drove, starting with the featured model, the McLaren MP4/4.



Assembly Guide

The step-by-step instructions for the highly detailed 1/8th scale McLaren MP4/4 model.



Specifications:

Scale	1:8
Materials	ABS, HIPS and die-cast metal
Finished Dimensions	L 552mm, H 124mm, W 268mm
Difficulty Rating	5

Customer Service Information:

Email: customerservices@deagostini.co.uk
Phone: 0845 1489 250
Website: www.model-space.com

www.model-space.com