



Cosmo

SPORT



PACK 07

DEAGOSTINI
MODELSPACE™
www.model-space.com



Cosmo **SPORT**

STAGE

51	THE DIFFERENTIAL
52	THE REAR SHOCK ABSORBERS
53	THE REAR SUSPENSION
54	THE EXHAUSTS – 1
55	THE EXHAUSTS – 2
56	THE REAR WHEELS
57	THE CONTROL UNIT – 1
58	THE CONTROL UNIT – 2
59	THE BATTERY HOLDER – 1



P.

120

124

126

130

132

134

136

138

140



DEAGOSTINI
MODELSPACE™
www.model-space.com

Designed and produced by Milanoedit srl – www.milanoedit.com

Published by De Agostini Publishing S.p.A., 28100 Novara,
Via G. da Verrazzano 15

All rights reserved © 2020

NOT SUITABLE FOR CHILDREN UNDER THE AGE OF 14.

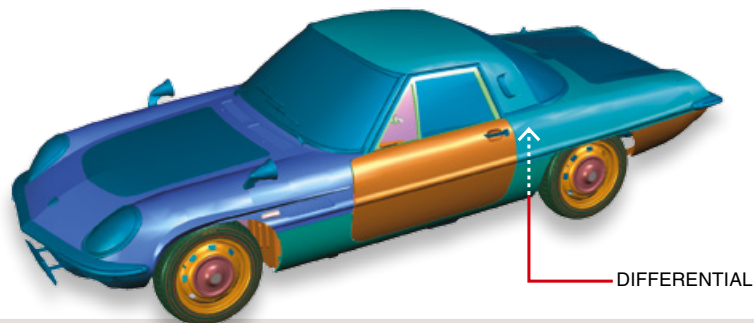
THIS PRODUCT IS NOT A TOY AND MUST BE USED UNDER
THE SUPERVISION OF AN ADULT.

ITEMS MAY VARY FROM THOSE SHOWN.



51 THE DIFFERENTIAL

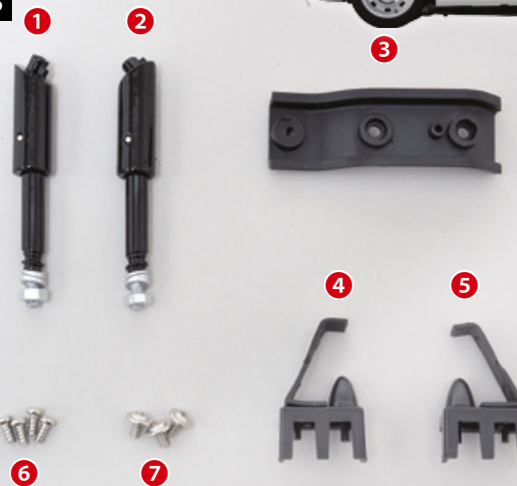
In this stage you will install the differential on your model car. Be careful not to damage the components provided.



TOOLS NEEDED

- Cross screwdriver no. 1
- Adhesive tape
- Modelling glue
- Pliers

LIST OF PIECES



- | | |
|-------------------------|---------------------------|
| 1 Rear shock absorber L | 6 Screws A (2.3 x 4mm) x4 |
| 2 Rear shock absorber R | 7 Screws B (2.3 x 4mm) x3 |
| 3 Bracket | |
| 4 Jounce bumper L | |
| 5 Jounce bumper R | |

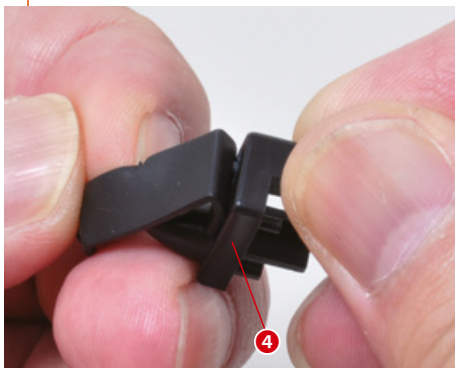
COSMO SPORT

Step

1

The jounce bumpers – 1

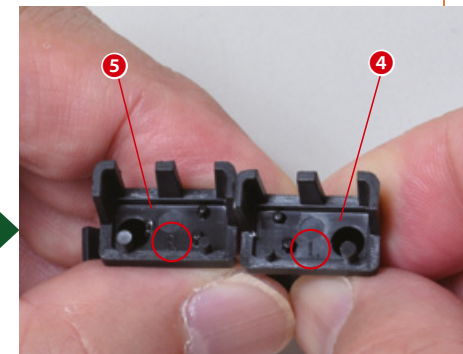
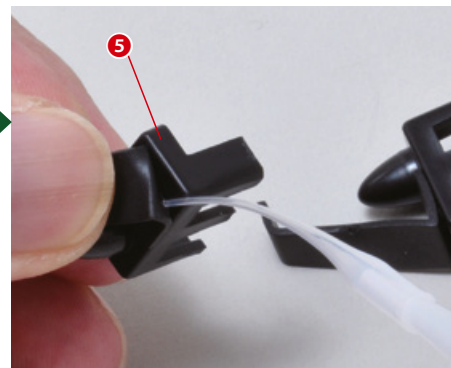
* If the components join perfectly, go directly to step 2



The two jounce bumpers are made of resin and rubber; each component should already be securely glued together.



If there is a gap, apply a drop of glue and press the pieces together.





COSMO SPORT

Step

2

The jounce bumpers – 2



Loosen the four nuts on the rear left suspension.



Raise the bolt about 1mm, as shown in the photo.



Position the pieces as shown in the photo, then attach the left jounce bumper to the rear left suspension.



Retighten the four nuts.

COSMO SPORT

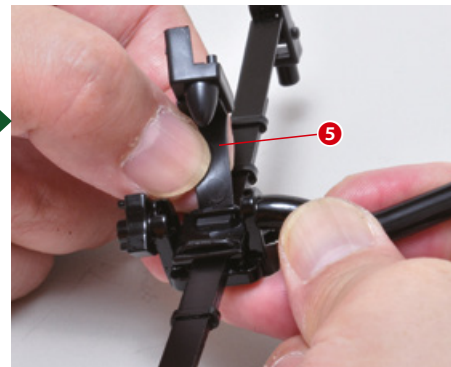
Step

3

The jounce bumpers – 3



Repeat step 2 to attach the right jounce bumper to the rear right suspension.



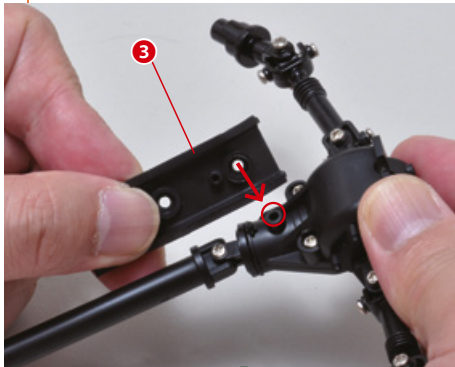


COSMO SPORT

Step

4

The differential – 1



Attach the bracket to the differential gearbox, as shown in the photo.



Secure the pieces together with a type A screw, but don't tighten it completely.



Turn the piece over and apply a strip of adhesive tape to identify the side of the differential shown in the photo.



Temporarily remove the screw and the driveshaft.

COSMO SPORT

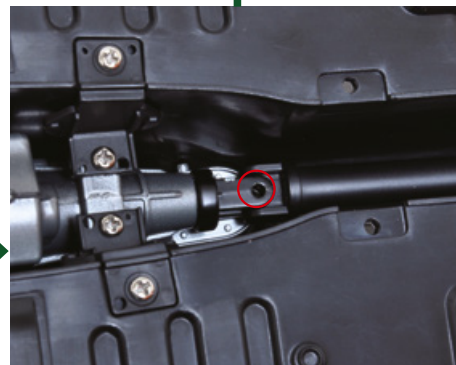
Step

5

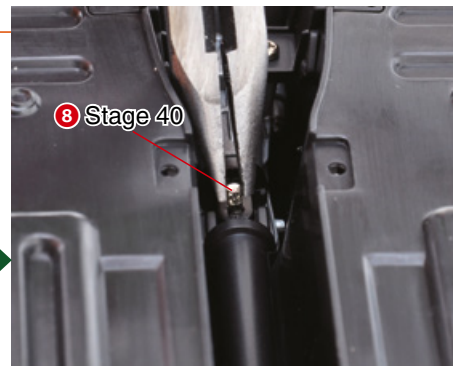
The differential – 2



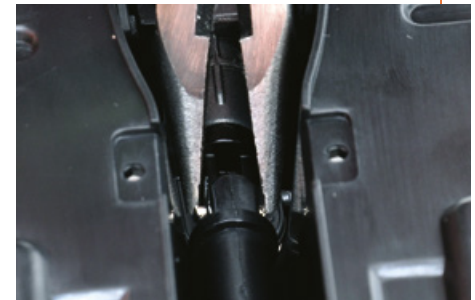
Position the main body of your model as shown in the photo, and insert the driveshaft you removed in step 4 into the transmission.



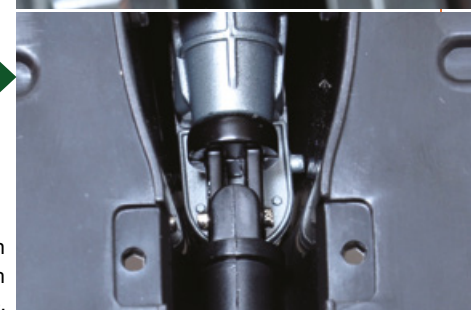
Connect the pieces as shown in the photo.



Gently insert the linchpin you received with stage 40, but don't push it all the way in. Do not use excessive force.



Turn the yoke on the transmission and use the pliers to push the linchpin into place.



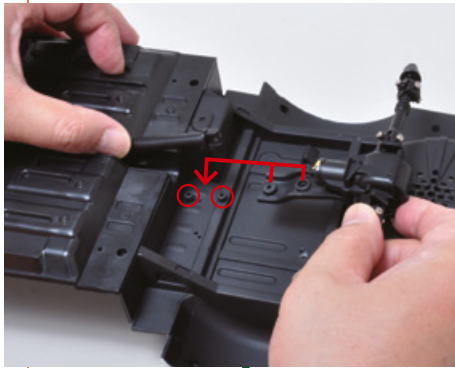


COSMO SPORT

Step

6

The differential – 3



Install the differential as shown in the photo.

Insert and tighten two type A screws in the circled holes.



Reattach the driveshaft to the differential.



Secure the pieces together with the screw you removed in step 4, then remove the strip of adhesive tape.



COSMO SPORT

Step

7

The silencer mount bracket



Position the silencer mount bracket as shown in the photo.

Gently press the pieces together.



FINAL RESULT

This is the result of this assembly session. As always, keep the pieces in a safe place.



The next stage

52 THE REAR SHOCK ABSORBERS

In this stage you will assemble a wheel and attach the shock absorbers to the rear suspension system.



REAR SHOCK ABSORBERS

TOOLS NEEDED

- Tweezers
- Pliers

LIST OF PIECES

- 1 Tyre
- 2 Rim
- 3 Hubcap
- 4 Emblem
- 5 Screws (3 x 4mm) x2



COSMO SPORT

Step

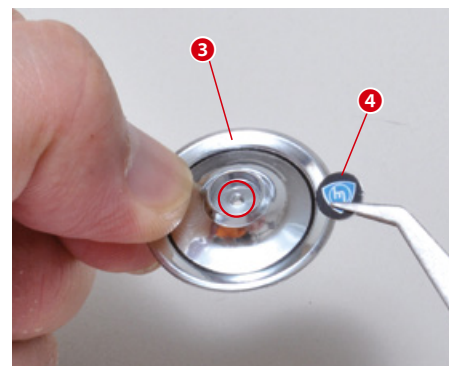
1 The wheel



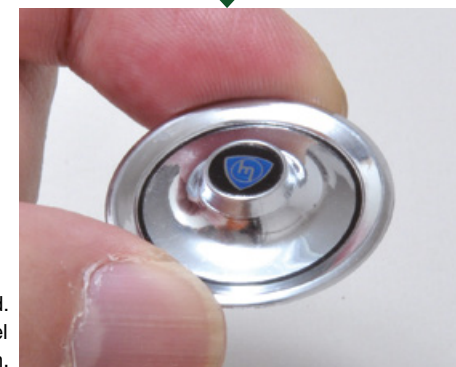
Insert the rim into the tyre, positioning the pieces as shown in the photo.



Look at the photo to check that you have joined the pieces correctly.



Now attach the emblem to the hubcap.



The hubcap is now finished. You will assemble the wheel components later on.



COSMO SPORT

Step

2

The rear shock absorbers – 1

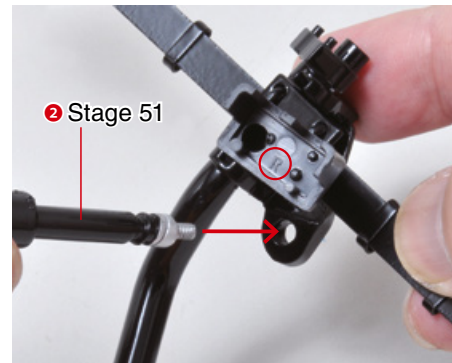
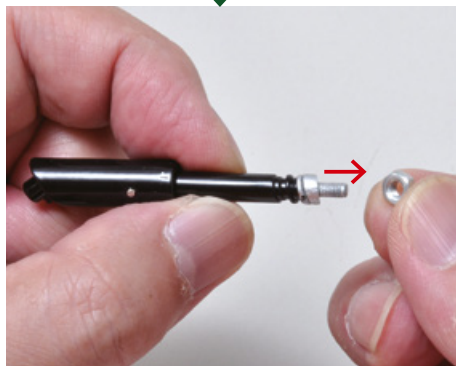
1 Stage 51

2 Stage 51



Temporarily remove the nuts on both components.

Get the two rear shock absorbers you received with stage 51.



Position the pieces as shown in the photo, then attach the right shock absorber to the right side of the rear suspension.

Reattach the nut you removed in this step to the end of the shock absorber.



COSMO SPORT

Step

3

The rear shock absorbers – 2



1 Stage 51

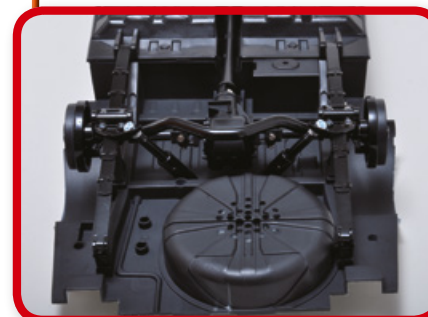
Now attach the left shock absorber to the left side of the rear suspension.



Reattach the nut you removed in step 2 to the end of the shock absorber.

FINAL RESULT

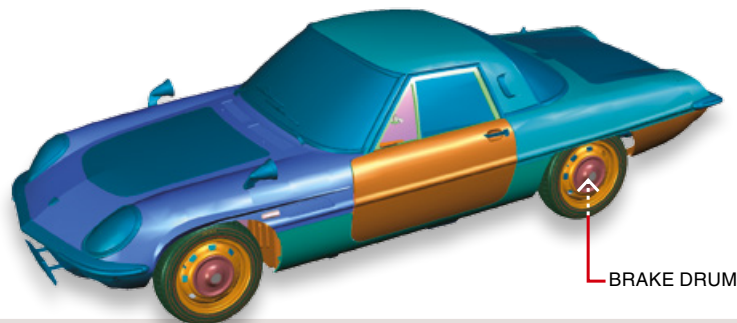
This is the result of this assembly session. Keep the pieces in a safe place.



The next stage

53 THE REAR SUSPENSION

In this stage you will attach the rear suspension system to the main body of your 1:8 scale Mazda Cosmo Sport model.



BRAKE DRUM

TOOLS NEEDED

- Cross screwdriver no. 1
- Thread-locker
- Pliers

LIST OF PIECES



- | | |
|-------------|----------------------------|
| 1 Disc L | 7 Bracket R |
| 2 Disc R | 8 Housing L |
| 3 Drum L | 9 Housing R |
| 4 Drum R | 10 Screws A (2.3 x 8mm) x3 |
| 5 Arms x2 | 11 Screws B (2.3 x 4mm) x5 |
| 6 Bracket L | 12 Screws C (2.3 x 4mm) x3 |

COSMO SPORT

Step

1 The housings



Put the housings you received with this stage on your work surface.



Position the pieces as shown in the photo, then insert the left housing into its housing on the rear suspension.

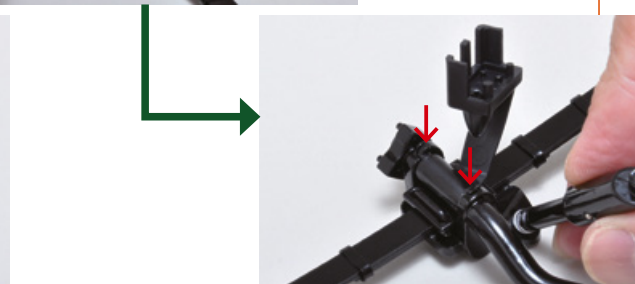


In the same way, attach the right housing to the right side of the rear suspension.

The two pieces are not identical: they can be identified by their shape and the letter stamped on the outer side.



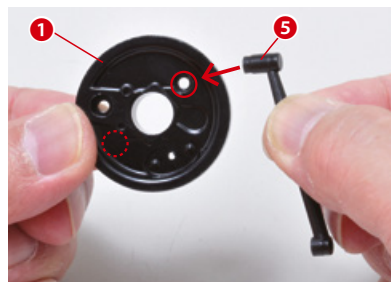
Press down gently until the pieces click into place.





COSMO SPORT

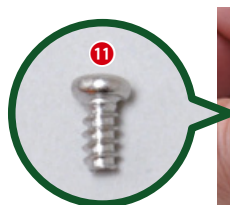
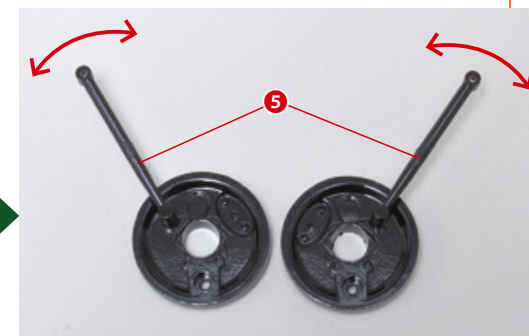
Step 2 The brakes – 1



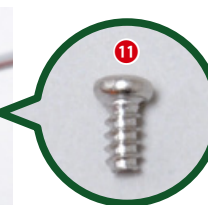
Attach one of the arms to the left disc.



Attach the other arm to the right disc in the same way.



Insert and tighten a type B screw to secure the pieces.



Again, secure the pieces with a type B screw.

Do not tighten the screws completely: the arms must be free to move, as shown in the photo.

COSMO SPORT

Step 3 The rear suspension system



Position the main body of your model as shown in the photo, then attach the rear suspension.

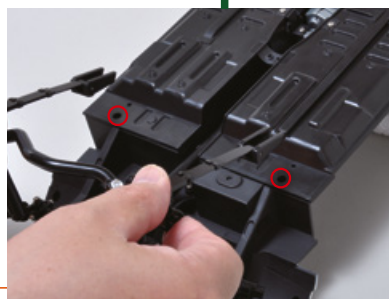


Insert the ends of the rear shock absorbers into the circled holes.



Finally, insert the linchpins on both jounce bumpers into the circled holes.

Insert the linchpins on the front brackets of the leaf springs into the holes circled in the photo.



Now insert the linchpins on the rear brackets of the leaf springs, as shown in the photo.





COSMO SPORT

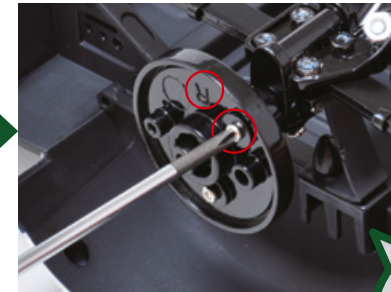
Step 4 The brakes – 2



Attach the left disc to the corresponding end of the rear suspension, as shown in the photo.



Insert and tighten a type C screw to secure the pieces.



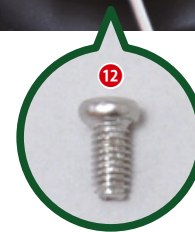
Secure the pieces with another type C screw.



Turn the components to align the screw holes, as shown in the photo.

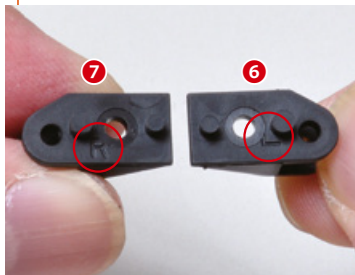


Repeat the previous steps to attach the right disc to the other end of the rear suspension.



COSMO SPORT

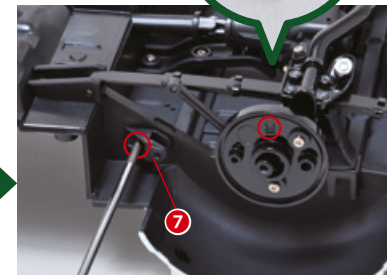
Step 5 The brakes – 3



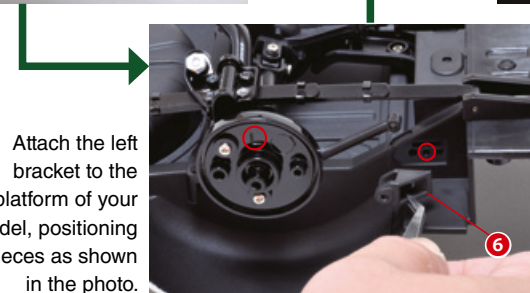
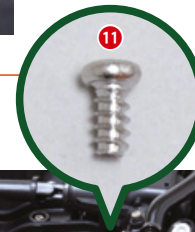
Get the two brackets you received with this stage.



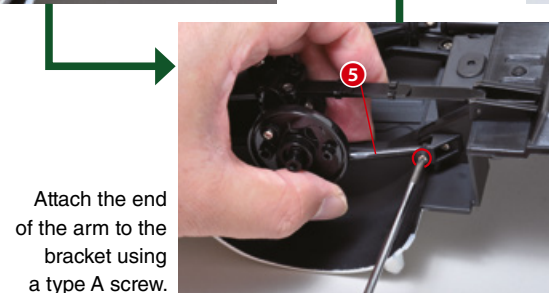
Secure the pieces with a type B screw.



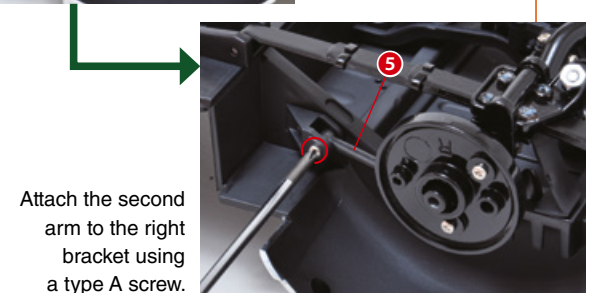
Repeat the previous steps to attach the right bracket to the other side of the platform.



Attach the left bracket to the platform of your model, positioning the pieces as shown in the photo.



Attach the end of the arm to the bracket using a type A screw.



Attach the second arm to the right bracket using a type A screw.



COSMO SPORT

Step 6 The brakes – 4



Attach the left drum to its disc, positioning the pieces as shown in the photo.

Fully tighten the nuts on both sides of the rear suspension.



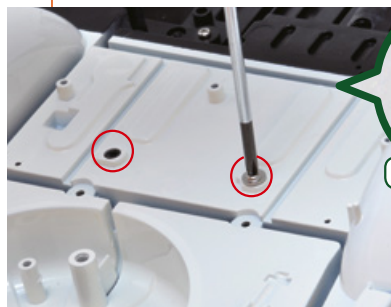
Attach the right drum to its brake disc in the same way.

Now also tighten the nuts on the rear shock absorbers, applying a small amount of thread-locker.



COSMO SPORT

Step 7 Securing the pieces



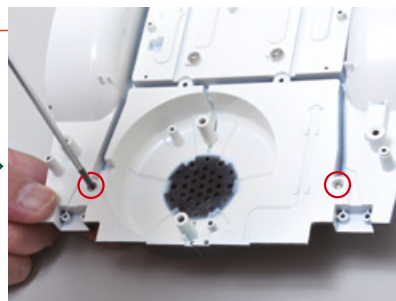
7 Stage 51

Insert and tighten two type B screws, received with stage 51, in the circled holes in the top side of the platform.

Insert and tighten two of the screws you received with stage 47 in the circled holes.



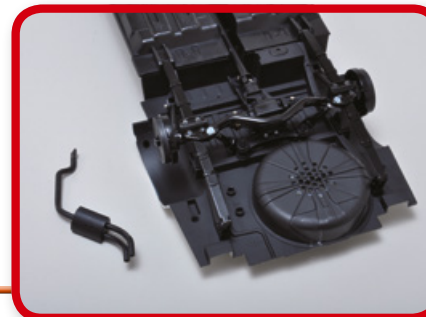
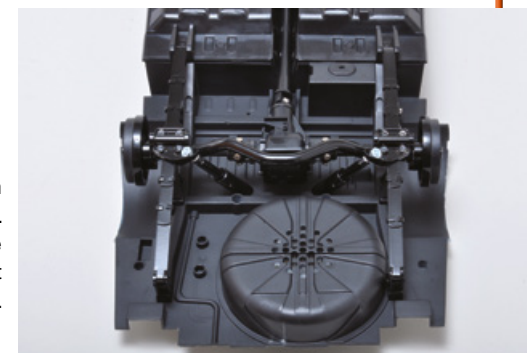
6 Stage 47
6 Stage 48



Finally, insert and tighten two of the screws you received with stage 48 in the circled holes.

FINAL RESULT

The rear suspension system of your model is now finished. Keep everything in a safe place, together with the rest of the pieces.

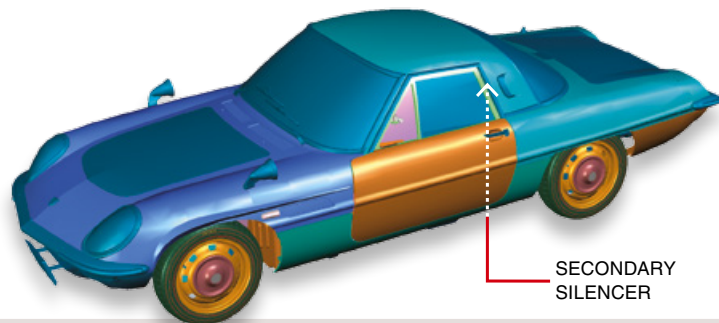


The next stage



54 THE EXHAUSTS – 1

In this stage you will start working on your model's exhausts. As always, follow our instructions and the photographs carefully.



TOOLS NEEDED

- Cross screwdriver no. 1

LIST OF PIECES



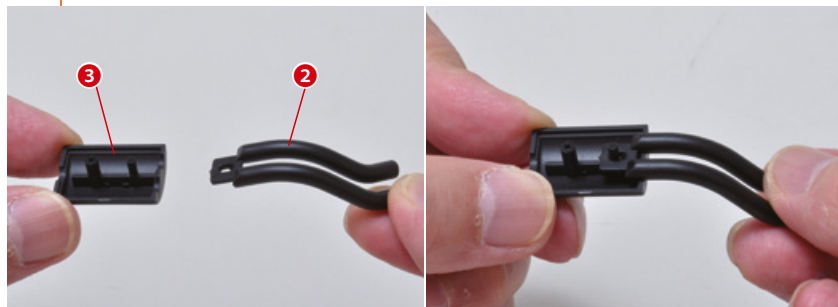
- | | |
|------------------------|---------------------------|
| 1 Exhaust pipe 1 | 6 Screws A (2 x 4mm) x3 |
| 2 Exhaust pipe 2 | 7 Screws B (2.3 x 4mm) x3 |
| 3 Secondary silencer A | |
| 4 Secondary silencer B | |
| 5 Mount bracket | |

COSMO SPORT

Step

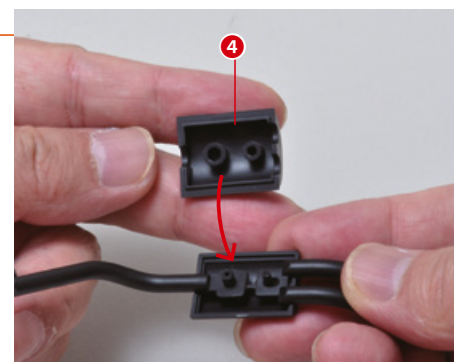
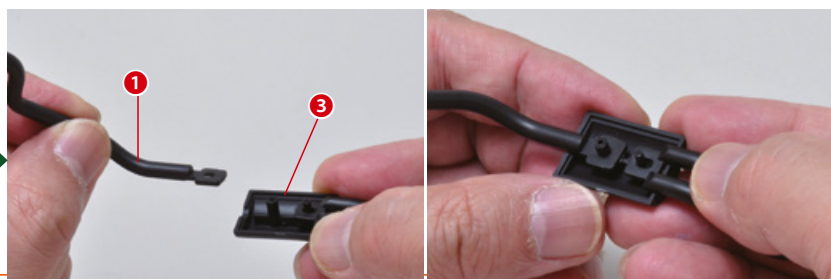
1

The secondary silencer



Attach part A of the secondary silencer to exhaust pipe 2, as shown in the photo.

Also attach exhaust pipe 1, positioning the pieces as shown in the photo.



Finally, attach part B of the secondary silencer to the unit.



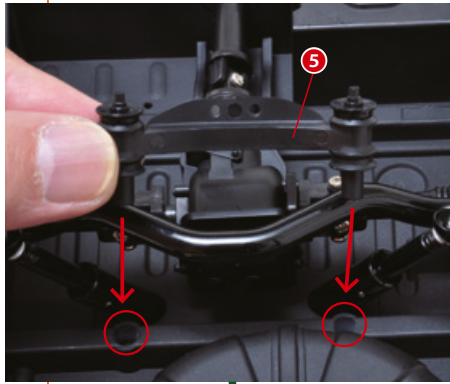
The secondary silencer is now finished.



COSMO SPORT

Step
2

The mount bracket – 1



Attach the mount bracket to the underside of your model's main body, positioning the pieces as shown in the photo.



Press until the components click into place.

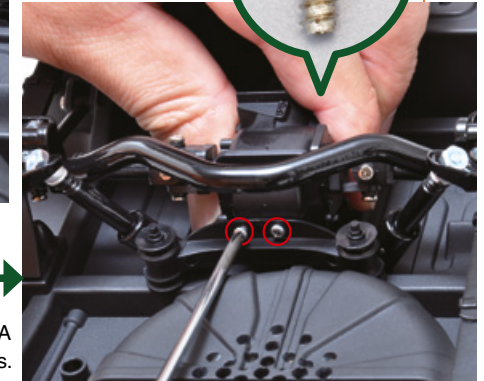
COSMO SPORT

Step
3

The mount bracket – 2



Lift the differential until the screw holes circled in the photo are aligned.

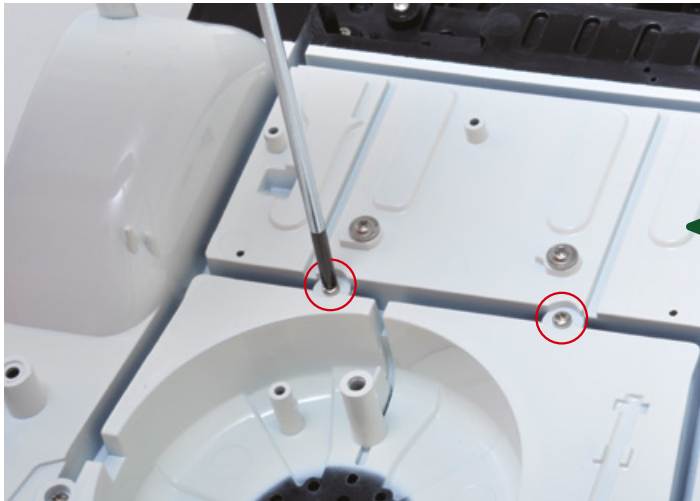


Insert and tighten two type A screws in the circled holes.

COSMO SPORT

Step
4

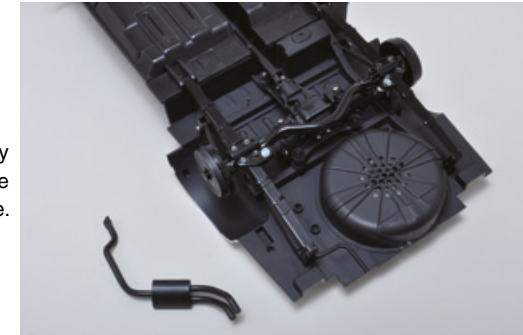
The mount bracket – 3



To secure the mount bracket, turn the pieces over and insert and tighten two type B screws in the circled holes.

FINAL RESULT

This is the result of this assembly session. As always, keep the pieces in a safe place.

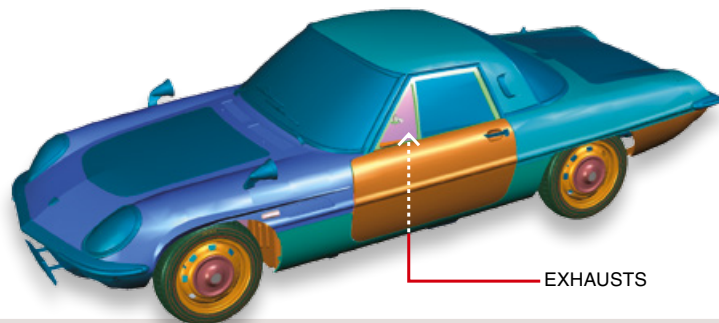


The next stage



55 THE EXHAUSTS – 2

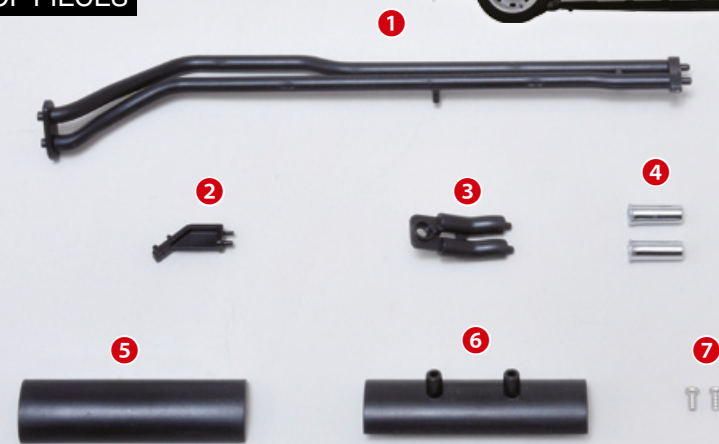
In this stage you will assemble the main silencer and attach it to your model along with the secondary silencer.



TOOLS NEEDED

- Cross screwdriver no. 1

LIST OF PIECES

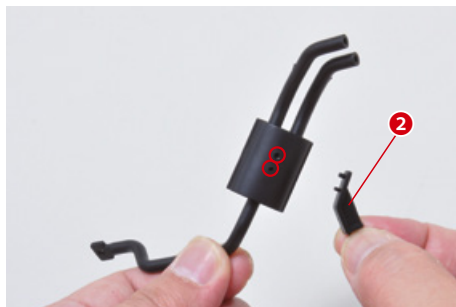


- 1 Exhaust pipe
- 2 Hook
- 3 Exhaust tip
- 4 Details
- 5 Main silencer A
- 6 Main silencer B

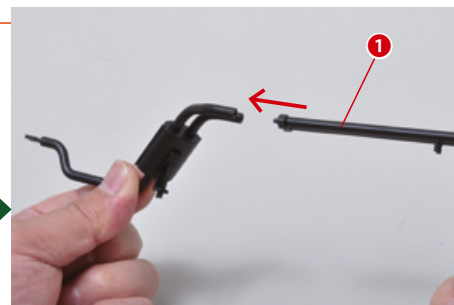
- 7 Screws (2.3 x 4mm) x2

COSMO SPORT

Step 1 The exhaust pipes – 1



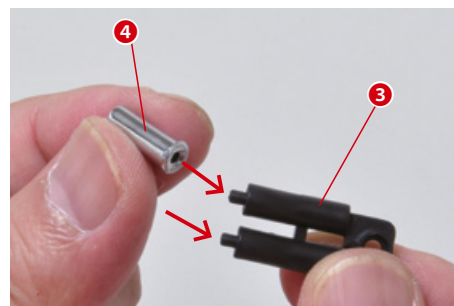
Attach the hook to the secondary silencer you assembled in stage 54.



Attach the exhaust pipe to the secondary silencer as shown in the photo.



Secure the pieces with one of the screws received with this stage.



Attach the two details to the exhaust tip.

Attach the exhaust tip to part B of the main silencer.



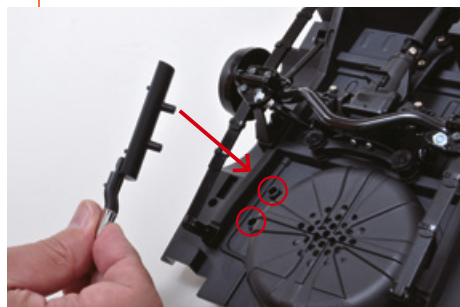


COSMO SPORT

Step

2

The exhaust pipes – 2



Attach the completed part B of the main silencer to your model, in the position shown in the photo.

Attach the completed secondary silencer to part B of the main silencer, positioning the pieces as shown in the photo.



Insert the two linchpins on the hook into the holes circled in the photo.

Insert the linchpins on the exhaust pipe into the circled holes.



Attach the end of the exhaust pipe to the header, as shown in the photo.

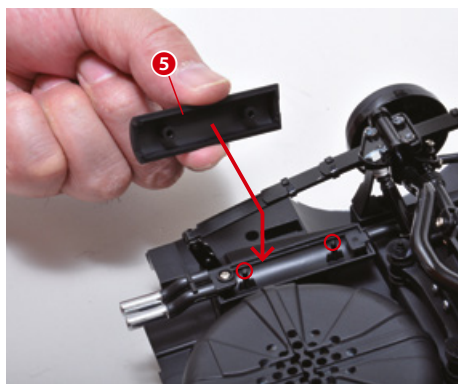


COSMO SPORT

Step

3

The exhaust pipes – 3



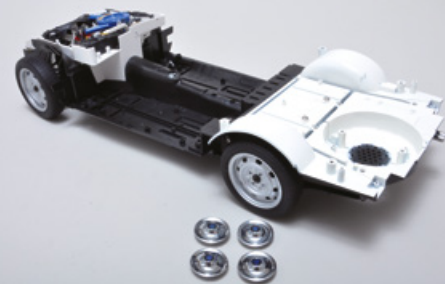
Complete the main silencer by covering it with part A.



Press the pieces together until they click into place.

FINAL RESULT

This is the result of this assembly session. Keep everything in a safe place.

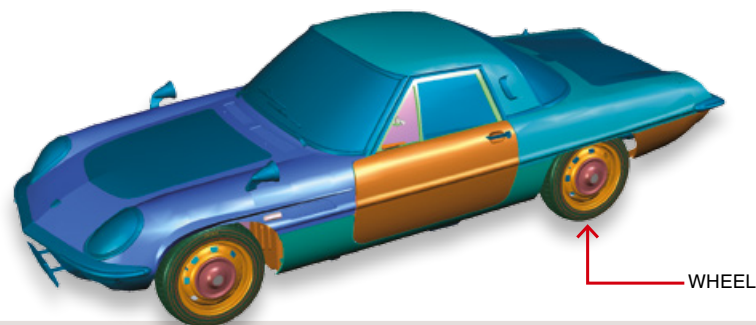


The next stage



56 THE REAR WHEELS

In this stage you will assemble the last wheel and attach the rear wheels to your model.



TOOLS NEEDED

- Cross screwdriver no. 2

LIST OF PIECES



- 1 Tyre
- 2 Rim
- 3 Hubcap
- 4 Emblem
- 5 Screws (3 x 4mm) x2
- 6 Washers

COSMO SPORT

Step

1 The wheel



Insert the rim into the tyre, positioning the pieces as shown in the photo.

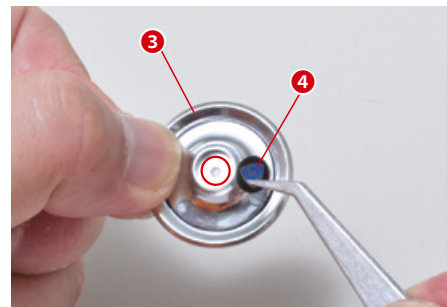
Ensure that all of the tyre bead is sitting on the rim.



COSMO SPORT

Step

2 The hubcap



Attach the emblem to the hubcap.





COSMO SPORT

Step

3 The rear wheels – 1



Put the main body of your model on your work surface, with the underside facing up.



Put a washer on the linchpin on the inside of the rim. Attach the wheel to the end of the rear axle.

Secure the pieces together with one of the screws received with this stage.



COSMO SPORT

Step

4 The rear wheels – 2



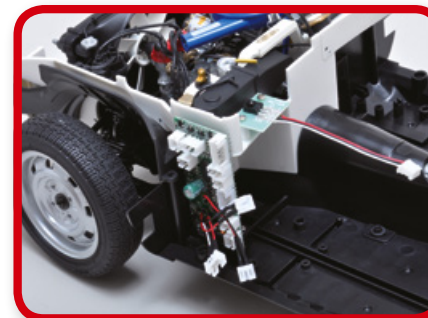
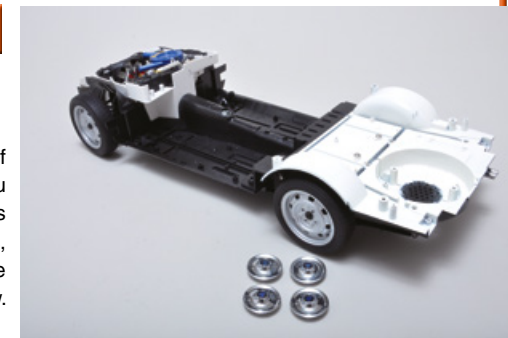
Get the wheel you assembled in stage 52 and put a washer on the inside. Attach the wheel to the other end of the rear axle.



Secure the pieces with one of the screws you received with stage 52.

FINAL RESULT

You have now attached all of the wheels to your model. You will be attaching the hubcaps in one of the following stages, so keep them in a safe place for now.

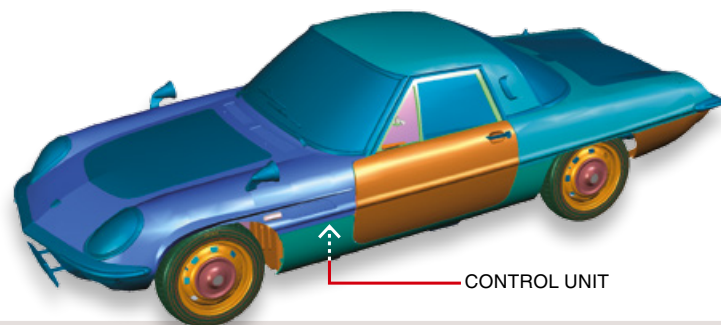


The next stage



57 THE CONTROL UNIT – 1

In this stage you will start working on the control unit of your 1:8 scale Mazda Cosmo Sport model. Handle the components carefully.

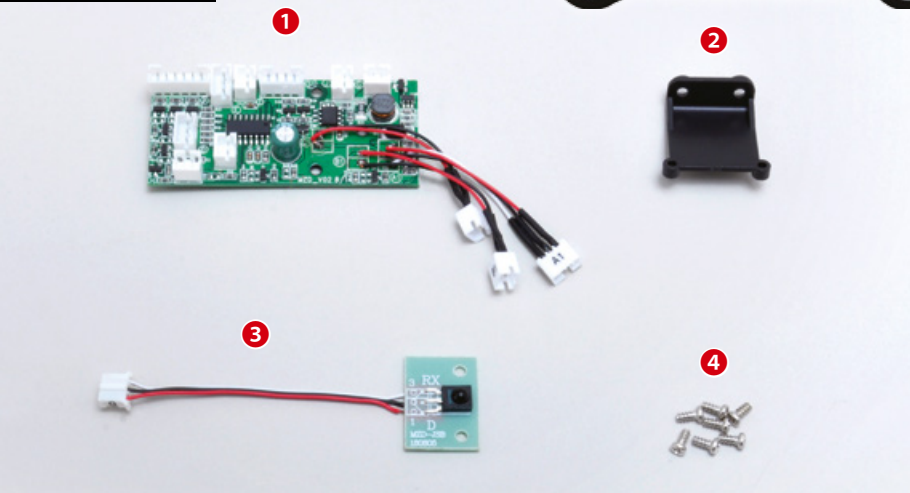


CONTROL UNIT

TOOLS NEEDED

- Cross screwdriver no. 1

LIST OF PIECES



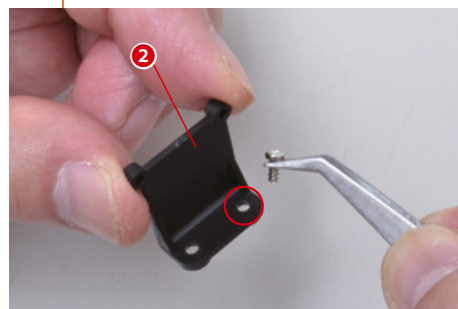
- 1 Control unit
- 2 Mount bracket
- 3 Circuit board
- 4 Screws (2.3 x 4mm) x7

COSMO SPORT

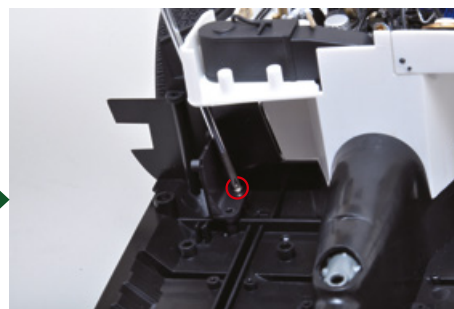
Step

1

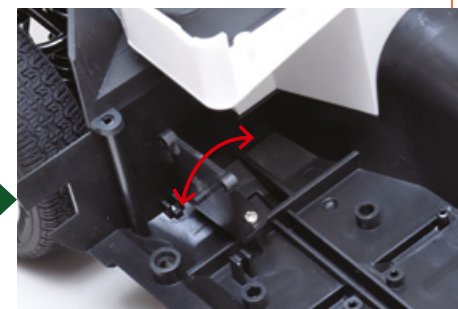
The control unit – 1



Insert one of the screws received with this stage into the hole in the mount bracket circled in the photo.



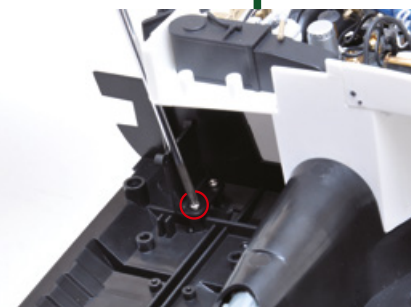
Tighten the screw as shown in the photo.



Attach the mount bracket to the platform of your model, positioning the pieces as shown in the photo.



Insert and tighten a second screw in the other hole in the mount bracket.



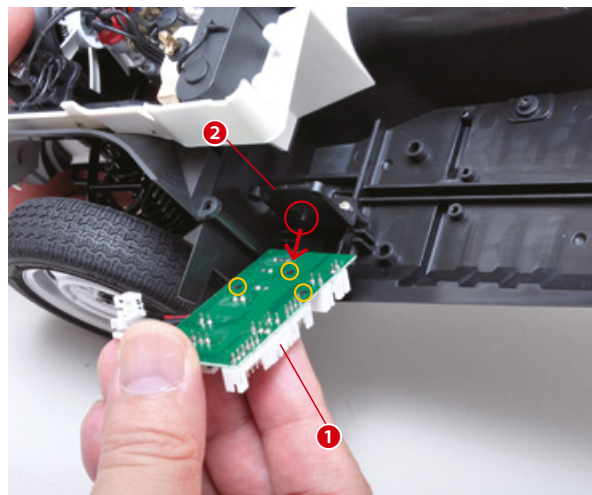
Check that the mount bracket is able to move as shown in the photo.



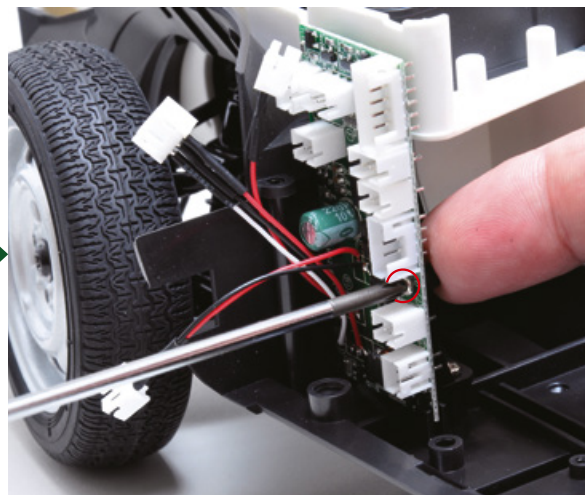
COSMO SPORT

Step

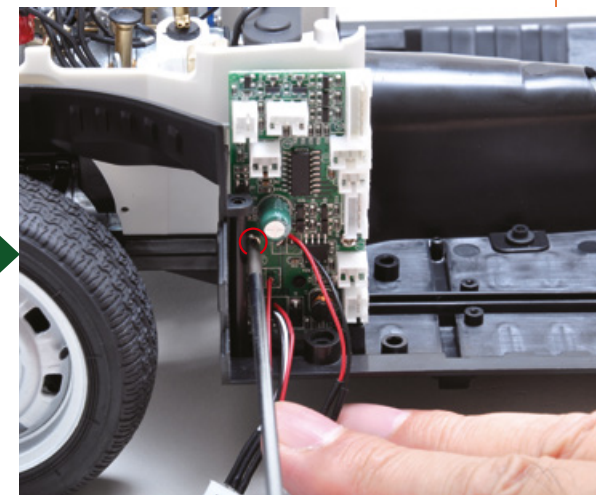
2 The control unit – 2



Position the control unit as shown in the photo and then attach it to the mount bracket.



Insert and tighten one of the screws received with this stage in the circled hole.

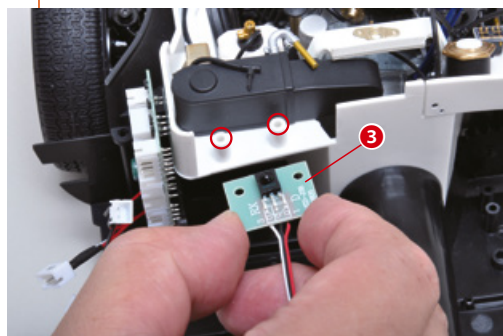


Insert and tighten a second screw in the hole circled in the photo.

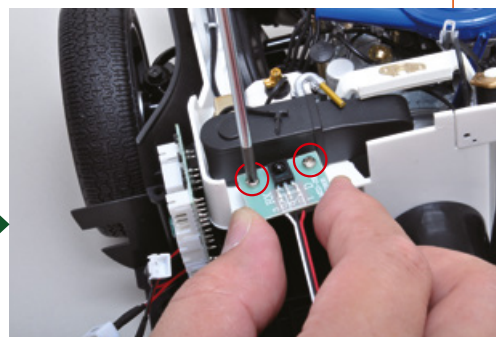
COSMO SPORT

Step

3 The control unit – 3



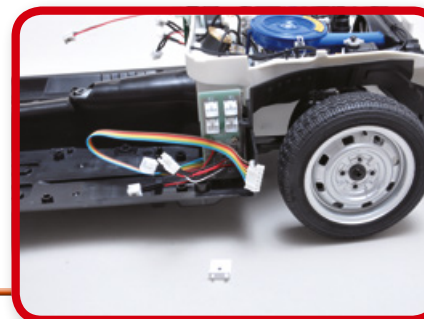
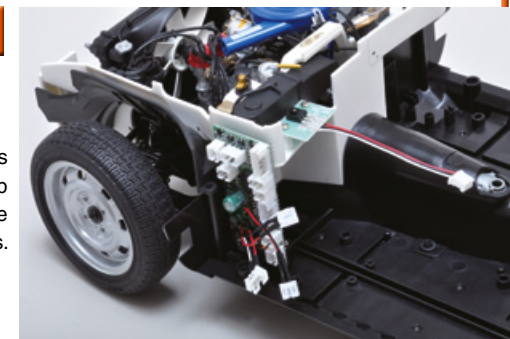
Position the circuit board as shown in the photo.



Secure the pieces with two of the screws received with this stage.

FINAL RESULT

This is the result of this assembly session. Keep everything in a safe place with the rest of the pieces.



The next stage



58 THE CONTROL UNIT – 2

In this stage you will continue to work on the control unit of your model, installing a secondary circuit board.

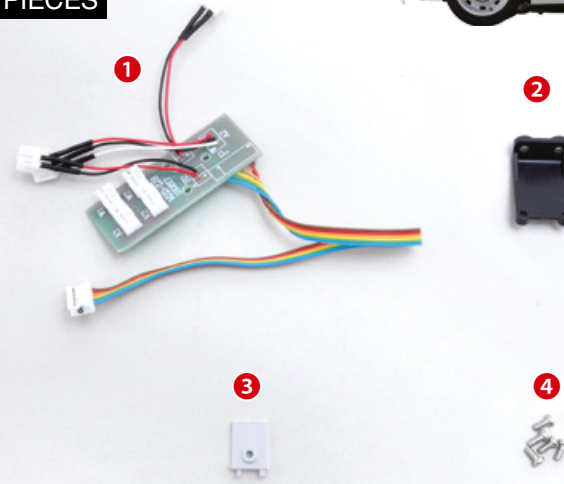
SECONDARY
CIRCUIT BOARD



TOOLS NEEDED

- Cross screwdriver no. 1

LIST OF PIECES

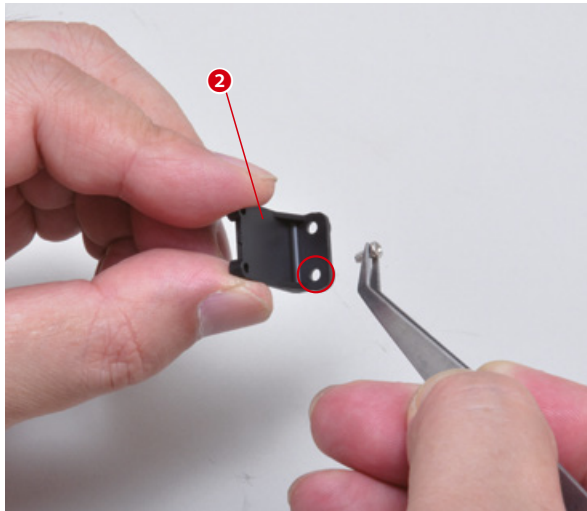


- 1 Secondary circuit board
- 2 Circuit board mount bracket
- 3 Light bulb holder
- 4 Screws (2.3 x 4mm) x5

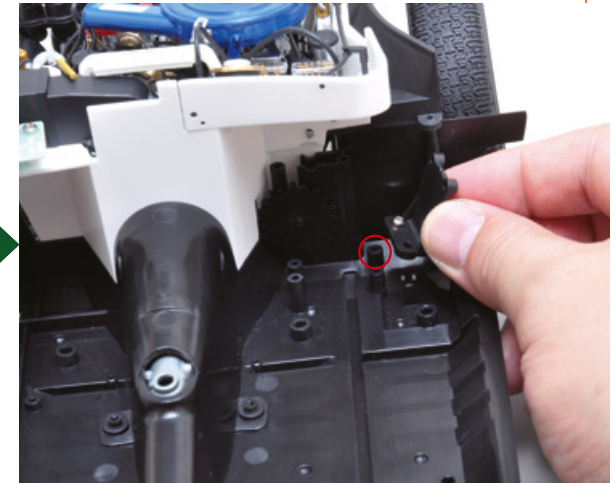
COSMO SPORT

Step

1 The secondary circuit board – 1



Insert one of the screws received with this stage into the hole in the circuit board mount bracket, circled in the photo.



Attach the mount bracket to your model, positioning the pieces as shown in the photo.

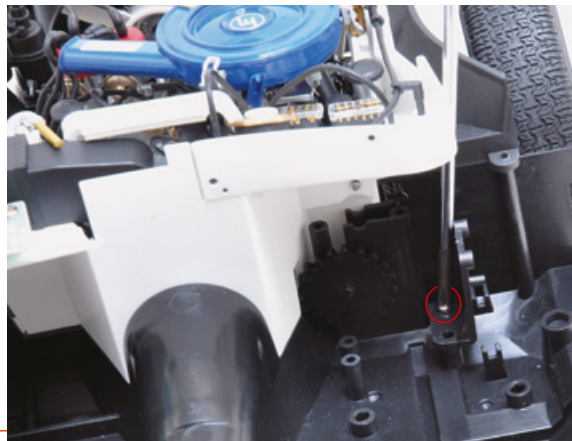


COSMO SPORT

Step

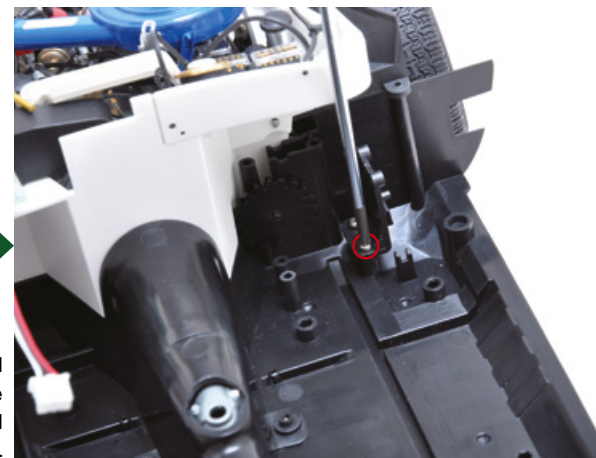
2

The secondary circuit board – 2



Fully tighten the screw you inserted in step 1.

Insert and tighten a second screw in the hole in the mount bracket circled in the photo.

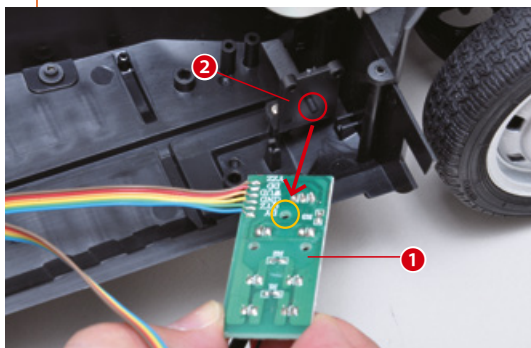


COSMO SPORT

Step

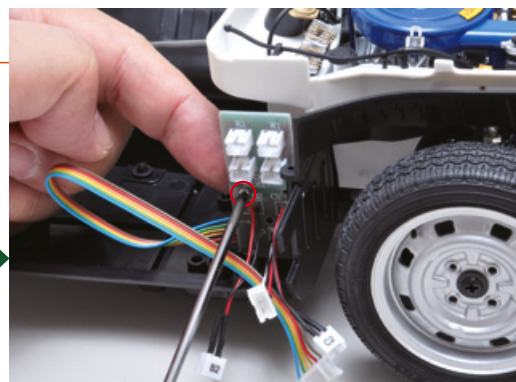
3

The secondary circuit board – 3

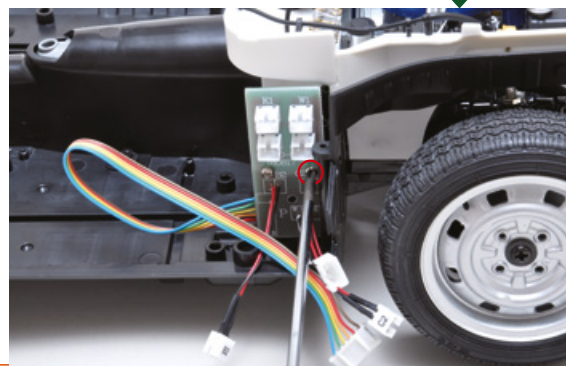


Position the pieces as shown in the photo and attach the secondary circuit board to its mount bracket.

Insert and tighten a second screw in the circled hole.

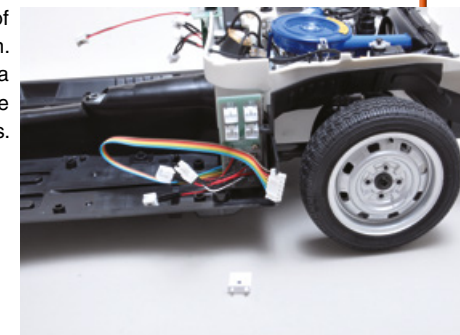


Secure the pieces with one of the screws you received with this stage.

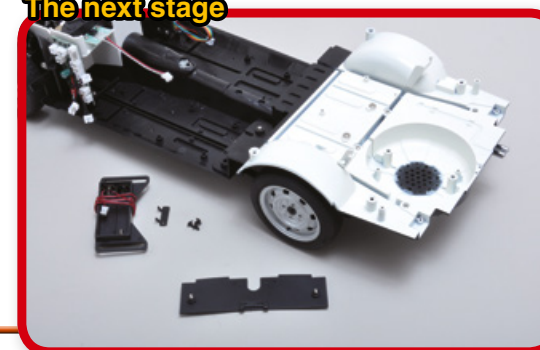


FINAL RESULT

This is the result of this assembly session. Keep everything in a safe place with the rest of the pieces.

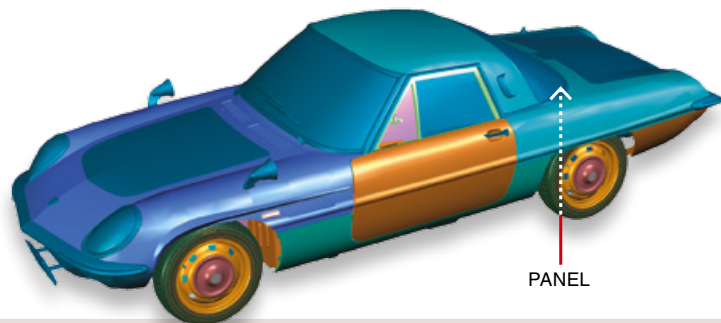


The next stage



59 THE BATTERY HOLDER – 1

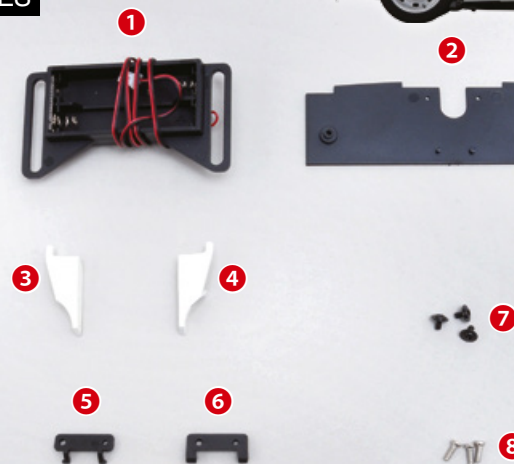
In this stage you will start working on the components related to the battery holder of your 1:8 scale Mazda Cosmo Sport model.



TOOLS NEEDED

- Cross screwdriver no. 1
- Modelling glue

LIST OF PIECES

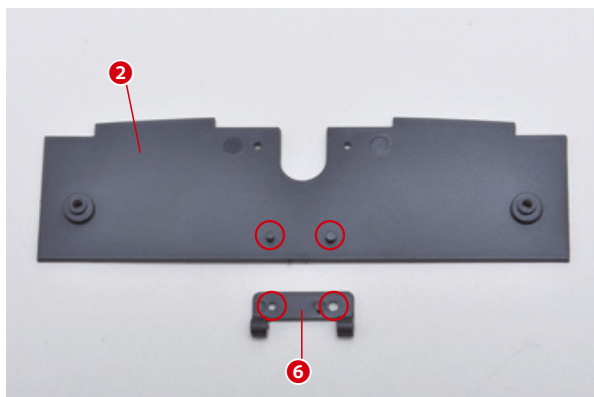


- | | |
|--------------------------|---------------------------|
| 1 Battery holder | 7 Screws A (2.3 x 4mm) x3 |
| 2 Panel | 8 Screws B (2.3 x 6mm) x3 |
| 3 Hinge mounting bracket | |
| 4 Hinge mounting bracket | |
| 5 Hinge 1 | |
| 6 Hinge 2 | |

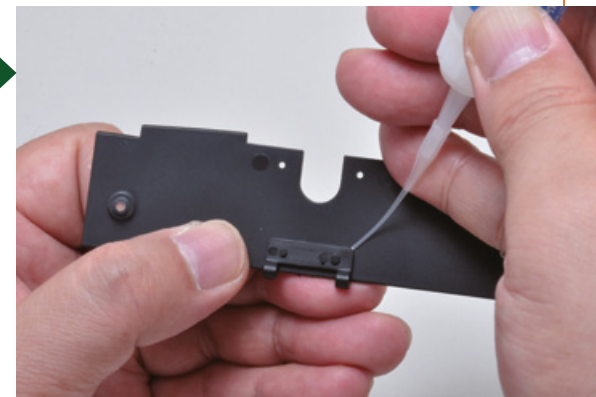
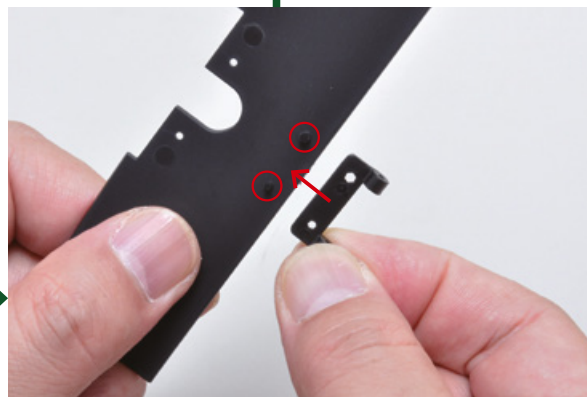
COSMO SPORT

Step

1 The panel – 1



Attach hinge 2 to the panel, positioning the pieces as shown in the photos on this page.

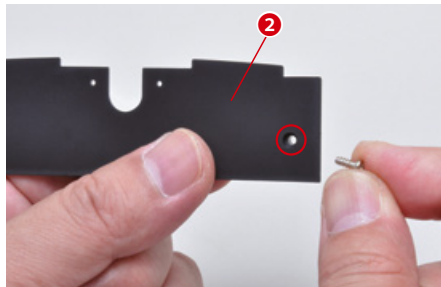


We recommend that you apply a small amount of glue before attaching the hinge completely, this way it will remain firmly secured in place.



COSMO SPORT

Step
2 The panel – 2



Insert a type B screw into the hole in the panel shown in the photo, on the opposite side to the one you attached the hinge.



Tighten the screw completely.



Now insert and tighten another type B screw in the hole on the other side of the panel.



Look at the photo to make sure that you have inserted the screws correctly.

COSMO SPORT

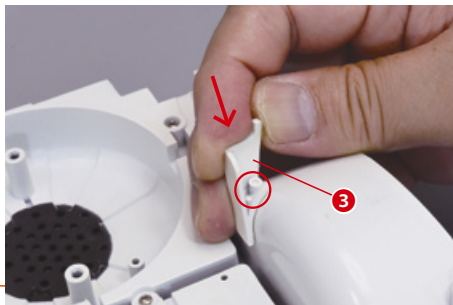
Step
3 The hinge mounting brackets



Attach the right hinge mounting bracket to your model's rear right mudguard, positioning the pieces as shown in the photo.



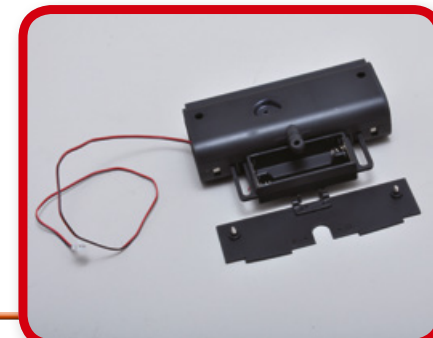
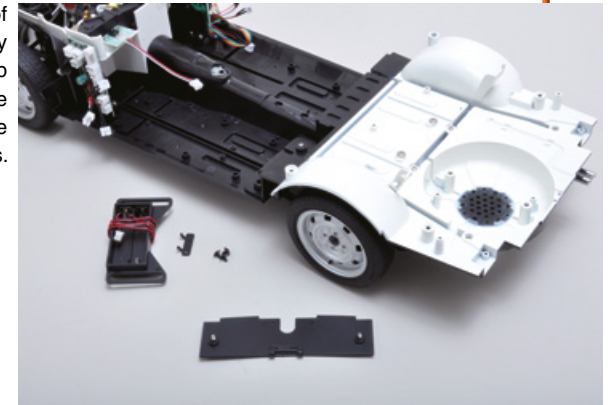
Press the hinge mounting bracket until it clicks into place.



Now attach the left hinge mounting bracket to the rear left mudguard in the same way.

FINAL RESULT

This is the result of this simple assembly session. As always, keep everything in a safe place together with the rest of the pieces.



The next stage