



Cosmo **SPORT**



PACK 06

DEAGOSTINI
MODELSPACE™
www.model-space.com



Cosmo **SPORT**

STAGE

42	THE FLOOR MATS – 1
43	THE SEATS – 1
44	THE SEATS – 2
45	THE FLOOR MATS – 2
46	THE SEATS – 3
47	THE LEAF SPRINGS – 1
48	THE LEAF SPRINGS – 2
49	THE REAR SUSPENSION
50	THE REAR PLATFORM



P.

100
102
104
106
108
110
112
114
118



DEAGOSTINI
MODELSPACE™
www.model-space.com

Designed and produced by Milanoedit srl – www.milanoedit.com

Published by De Agostini Publishing S.p.A., 28100 Novara,
Via G. da Verrazzano 15

All rights reserved © 2020

NOT SUITABLE FOR CHILDREN UNDER THE AGE OF 14.

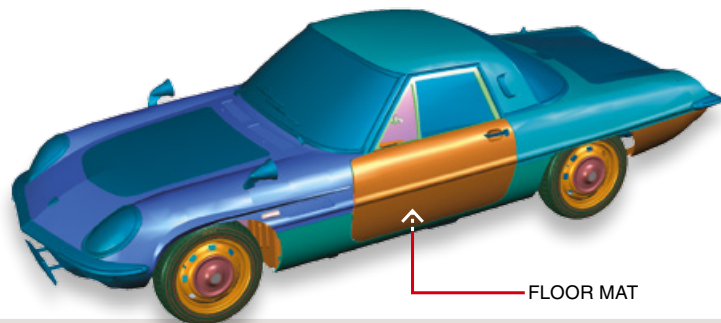
THIS PRODUCT IS NOT A TOY AND MUST BE USED UNDER
THE SUPERVISION OF AN ADULT.

ITEMS MAY VARY FROM THOSE SHOWN.



42 THE FLOOR MATS – 1

In this stage you will attach the left floor mat to the platform and then attach the seat cushion you received with the previous stage.



TOOLS NEEDED

- Tweezers

LIST OF PIECES

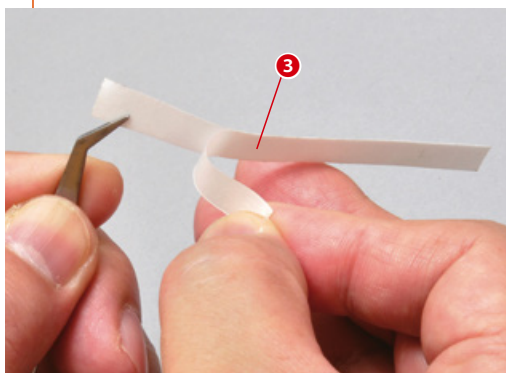


COSMO SPORT

Step

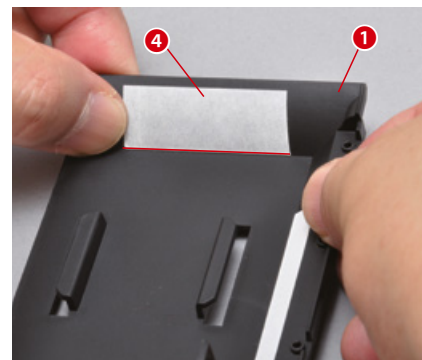
1

The double-sided tape

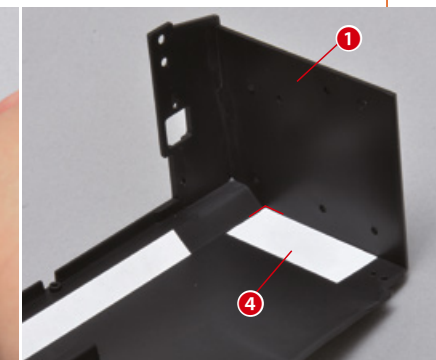


Remove the protective film from one side of the long strip of double-sided tape.

Stick the long strip of tape on section L of the platform, as shown in the photo.



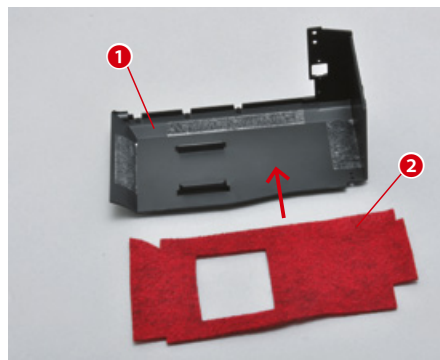
Now stick the two short strips of tape on section L of the platform in the same way, as shown in the photo.





COSMO SPORT

Step 2 The floor mat



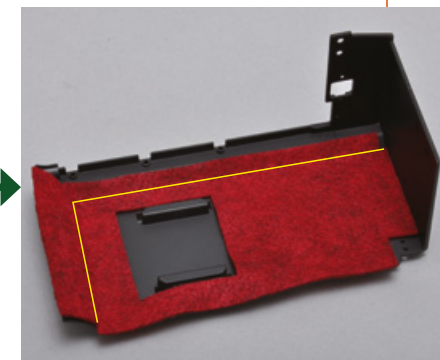
Remove the protective films from all the strips of double-sided tape.



Position the floor mat following the shape of the pieces and the photos.



Align the long side and press it down so that it sticks firmly to the corresponding strip of double-sided tape.



Do the same to ensure that the floor mat adheres to the short strips.

COSMO SPORT

Step 3 The seat cushion



Get the seat cushion you worked on in the previous stage, and position the pieces as shown in the photo.



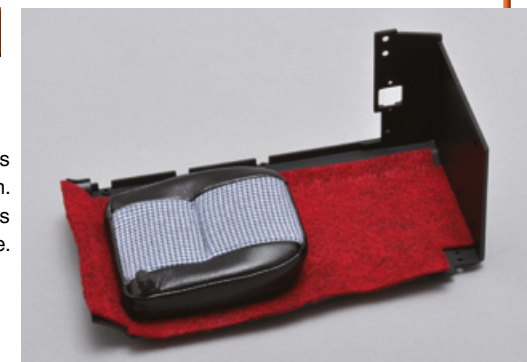
Attach the seat cushion to the platform. Make sure the seat adjustment lever is between the floor mat and the seat cushion.



If the lever is not in the correct position, remove the seat cushion from the floor and adjust the height of the lever.

FINAL RESULT

This is the result of this simple assembly session.
Keep all the pieces in a safe place.

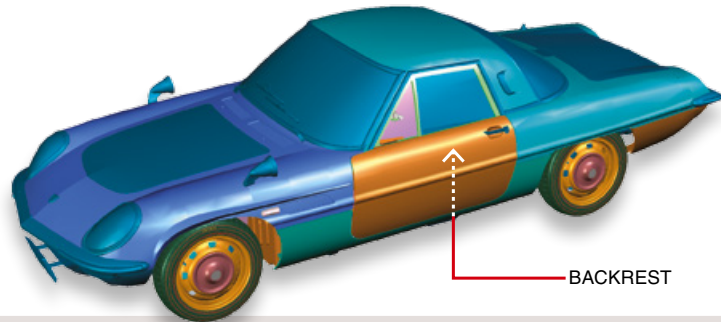


The next stage



43 THE SEATS – 1

In this stage you will attach the rest of the left seat to the seat cushion. Follow our instructions and the accompanying photographs carefully.



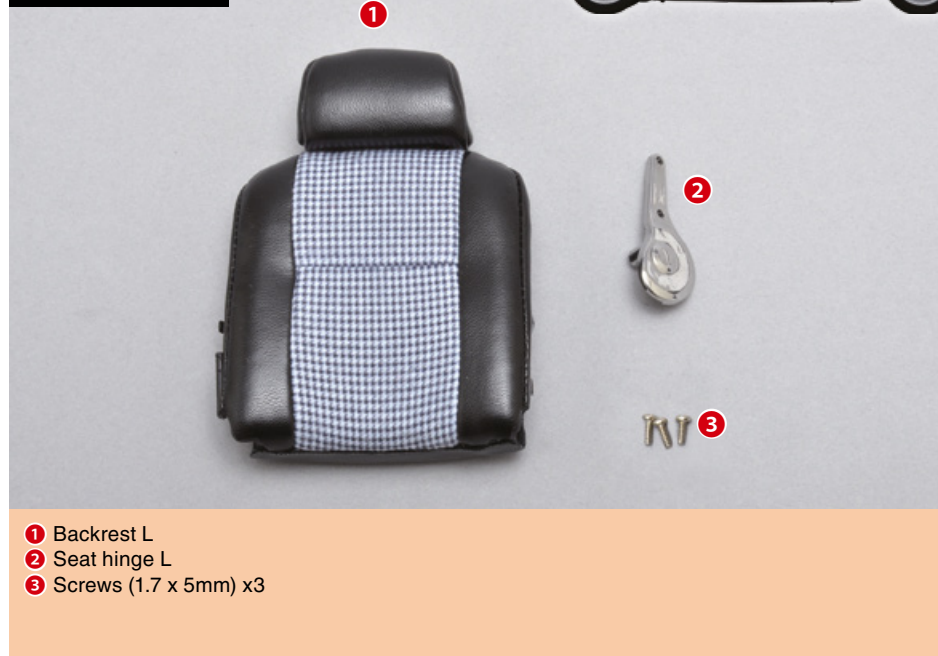
TOOLS NEEDED

- Cross screwdriver no. 0

RECOMMENDED TOOLS

- Adhesive tape

LIST OF PIECES



- 1 Backrest L
- 2 Seat hinge L
- 3 Screws (1.7 x 5mm) x3

COSMO SPORT

Step

1 The backrest – 1



Remove the seat cushion from the platform and attach it to its backrest.

Look at the photo carefully to identify the interlocking elements on the two pieces.



COSMO SPORT

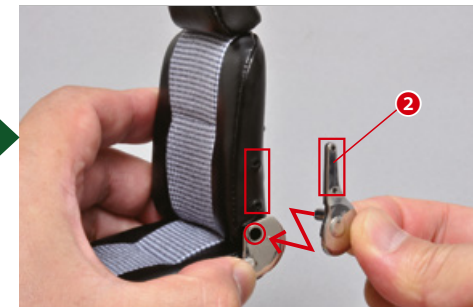
Step

2 The backrest – 2



Get the hinge from the pieces that came with stage 41 and attach it to the seat using the interlocking elements indicated in the photo.

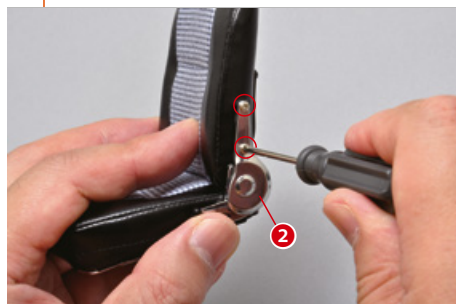
Now attach the hinge you received with this stage to the backrest.





COSMO SPORT

Step 3 The backrest – 3



Secure the pieces with two of the screws you received with this stage.

Now secure the other end by inserting two of the screws you received with stage 41 into the holes circled in the photo.



COSMO SPORT

Step 4 Test



Make sure the seat folds smoothly in both directions. Be careful not to damage the components.

The headrest can also be raised and lowered. Be careful not to separate it completely from the backrest.



COSMO SPORT

Step 5 The seat



Attach the completed seat to section L of the platform.



The first seat installed correctly. This is a temporary assembly; during the following stages you will be removing it to continue assembling the pieces.

FINAL RESULT

The first seat is now finished and attached to the platform. Keep everything you have assembled in a safe place with all the other pieces.

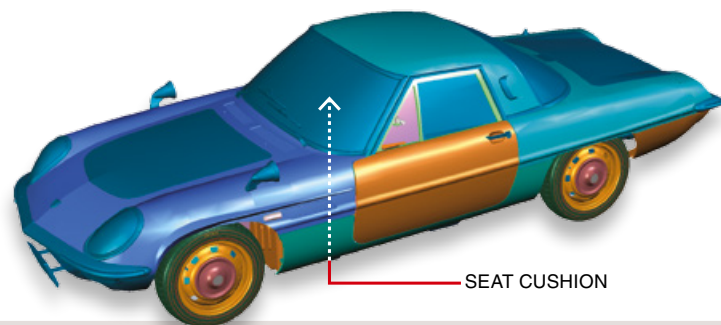


The next stage



44 THE SEATS – 2

In this stage you will start working on the right seat cushion; we will also give you some maintenance tips for your suspension and steering.



TOOLS NEEDED

- Cross screwdrivers no. 1 and no. 2
- Model car oil
- Instant glue

LIST OF PIECES



- 1 Seat cushion R
- 2 Hinge R
- 3 Lever R
- 4 Screws (1.7 x 5mm) x3

COSMO SPORT

Step

1

The seat cushion



Attach the lever to the bottom of the seat cushion by aligning the interlocking elements indicated in the photo.

The right seat cushion is now also finished.

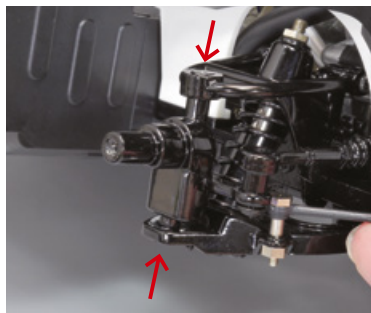


A FEW MAINTENANCE TIPS

On this page, we will give you some maintenance tips for the front suspension and the steering system.



The suspension system



Leave a 2 mm gap between the screws indicated in the photo (where the wheel has been removed) and the surface. If necessary, you can loosen or tighten the screws as required.



If the screw in the tie rod (circled in the photo) becomes loose, you can apply a drop of instant glue to secure it. Before doing this, fully tighten the screw and then loosen it by about a 1/4 turn, then put some glue in the hole (from the opposite end of the screw head).



Apply a small amount of oil to the area of the suspension system circled in the photo, where the end of the tie rod goes.

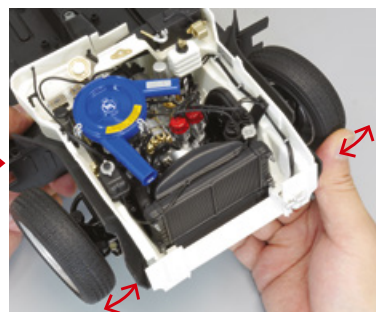
The tips on this page are obviously valid for both sides of the suspension.



The steering wheel



Apply a small amount of oil to the flat part of the tie rod cog, circled in the photo.



Slowly move the wheels in the direction of the arrows in the photo to ensure that the oil has been applied correctly. Do not force the wheels to move, as you may damage them.



Pick up your model and try to turn the steering column as shown in the photo. Once you have applied the oil, the wheels should turn smoothly.

FINAL RESULT

This is the result of this assembly session, in which you also adjusted the suspension system and the steering. Keep everything you have assembled in a safe place with the rest of the pieces.



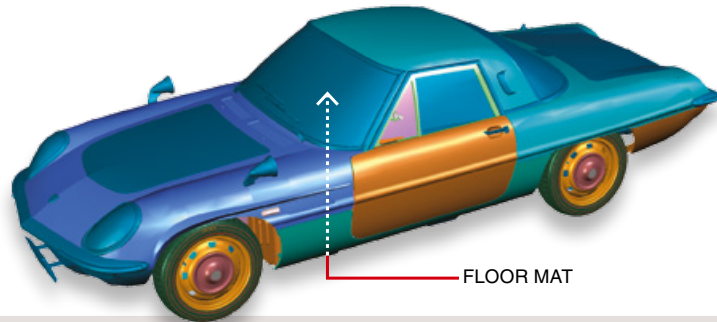
The next stage





45 THE FLOOR MATS – 2

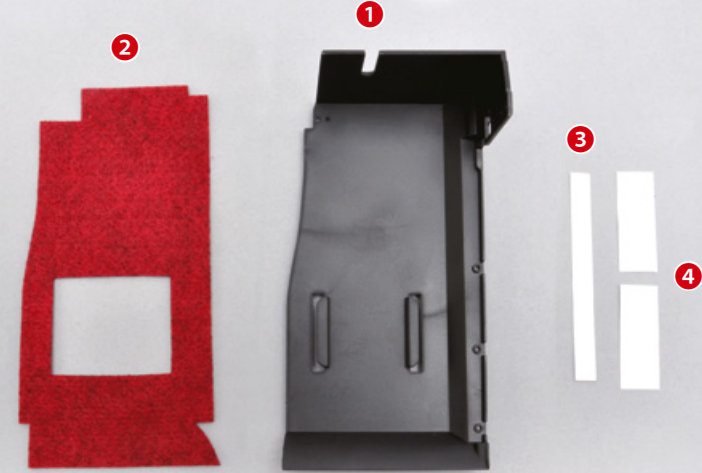
In this stage you will attach the right floor mat to the platform and then attach the seat cushion you received with the previous stage.



TOOLS NEEDED

- Tweezers

LIST OF PIECES



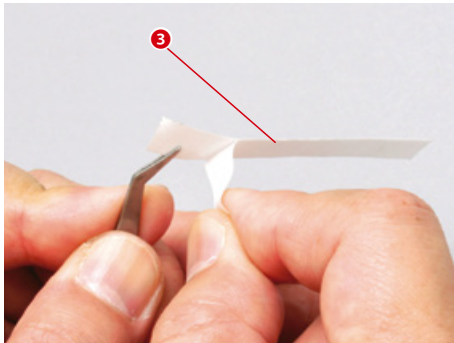
- 1 Platform – section R
- 2 Floor mat R
- 3 Long double-sided tape
- 4 Short double-sided tape x2

COSMO SPORT

Step

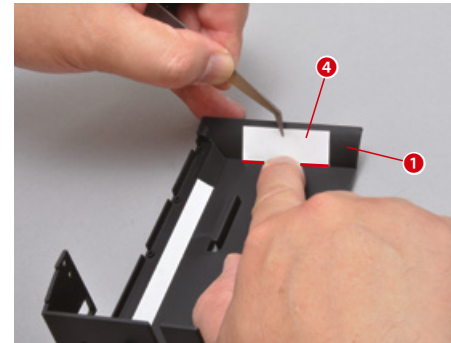
1

The double-sided tape



Remove the protective film from one side of the long strip of double-sided tape.

Stick the long strip of tape on section R of the platform, as shown in the photo.



Now stick the two short strips of tape on section R of the floor in the same way, as shown in the photo.

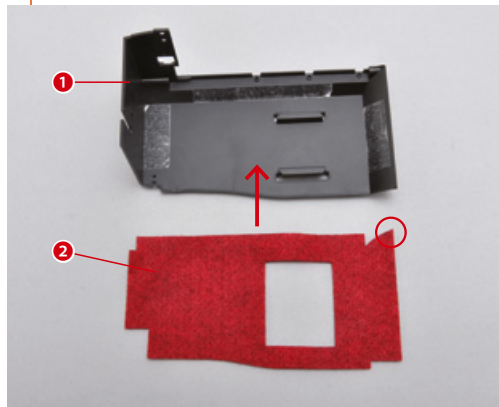




COSMO SPORT

Step

2 The floor mat

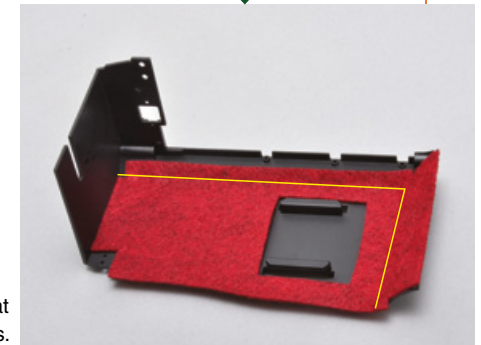


Remove the protective films from all the strips of double-sided tape.

Position the floor mat following the shape of the pieces and the photos.



Align the long side and press it down so that it sticks firmly to the corresponding strip of double-sided tape.



Do the same to ensure that the floor mat adheres to the short strips.

COSMO SPORT

Step

3 The seat cushion



Get the seat cushion you worked on in the previous stage, and position the pieces as shown in the photo.



Attach the seat cushion to the platform. Make sure the seat adjustment lever is between the floor mat and the seat cushion.



If the lever is not in the correct position, remove the seat cushion from the floor and adjust the height of the lever.

FINAL RESULT

This is the result of this simple assembly session. Keep all the pieces in a safe place.

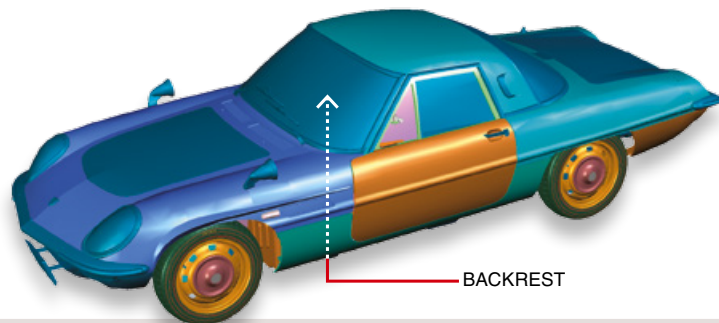


The next stage



46 THE SEATS – 3

In this stage you will attach the rest of the right seat to the seat cushion, which you will then attach to the corresponding section of the platform.



TOOLS NEEDED

- Cross screwdriver no. 0

RECOMMENDED TOOLS

- Adhesive tape

LIST OF PIECES



- 1 Backrest R
- 2 Seat hinge R
- 3 Screws (1.7 x 5mm) x3

COSMO SPORT

Step

1

The backrest – 1



Remove the seat cushion from the platform and attach it to its backrest.

Look at the photo carefully to identify the interlocking elements on the two pieces.



COSMO SPORT

Step

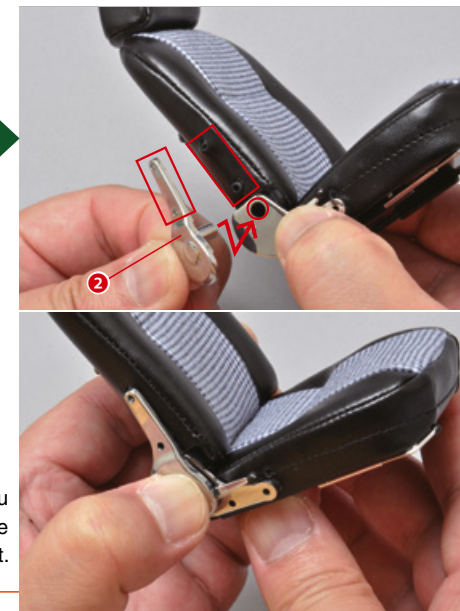
2

The backrest – 2



Get the hinge from the pieces that came with stage 44 and attach it to the seat using the interlocking elements indicated in the photo.

Now attach the hinge you received with this stage to the backrest.





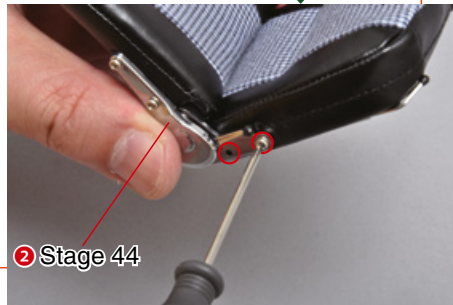
COSMO SPORT

Step 3 The backrest – 3



Secure the pieces with two of the screws you received with this stage.

Now secure the other end by inserting two of the screws you received with stage 44 into the holes circled in the photo.



COSMO SPORT

Step 4 Test



Make sure the seat folds smoothly in both directions. Be careful not to damage the components.

The headrest can also be raised and lowered. Be careful not to separate it completely from the backrest.



COSMO SPORT

Step 5 The seat



Attach the completed seat to section R of the platform.



The second seat has now also been installed correctly. This is a temporary assembly; during the following stages you will be removing it to continue assembling the pieces.

FINAL RESULT

This is the result of this satisfying assembly session. Keep the piece in a safe place with all the other pieces.

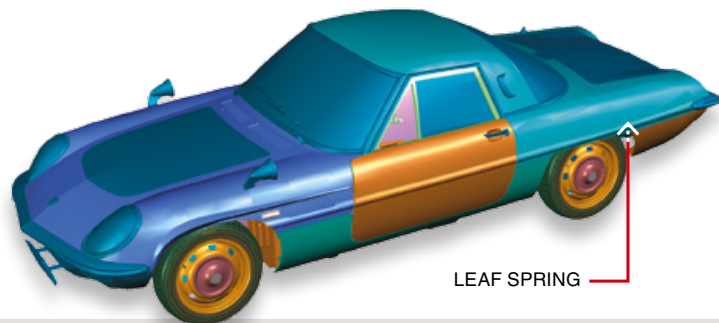


The next stage



47 THE LEAF SPRINGS – 1

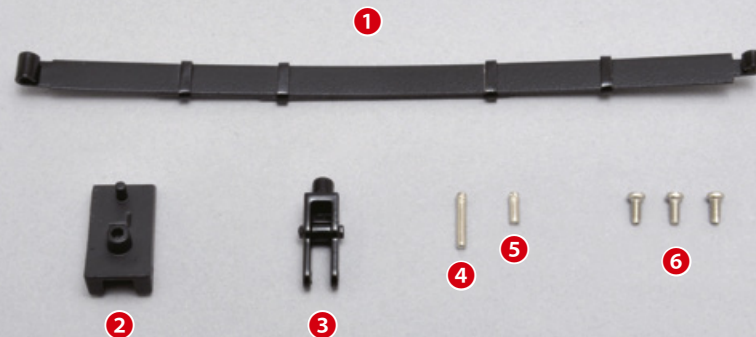
In this stage you will be working on the left leaf spring of the rear suspension system. Follow our instructions and the accompanying photos carefully.



TOOLS NEEDED

- Hammer (received with stage 17)
- Board (received with stage 17)

LIST OF PIECES



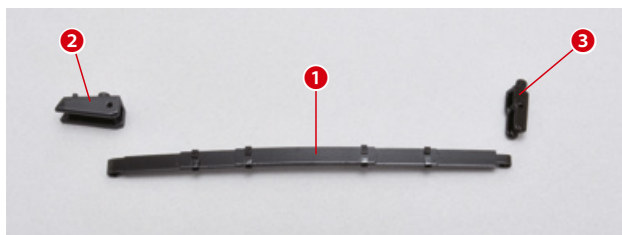
- 1 Leaf spring L
- 2 Bracket A
- 3 Bracket B
- 4 Long linchpin
- 5 Short linchpin
- 6 Screws (2.3 x 4mm) x3

COSMO SPORT

Step

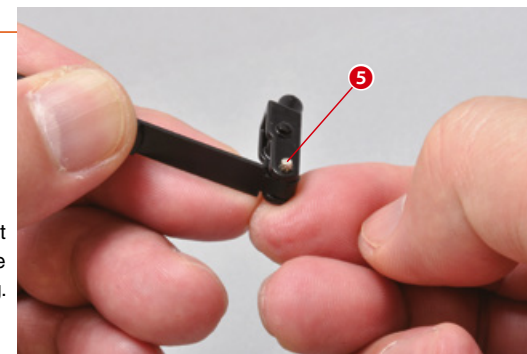
1

The brackets – 1

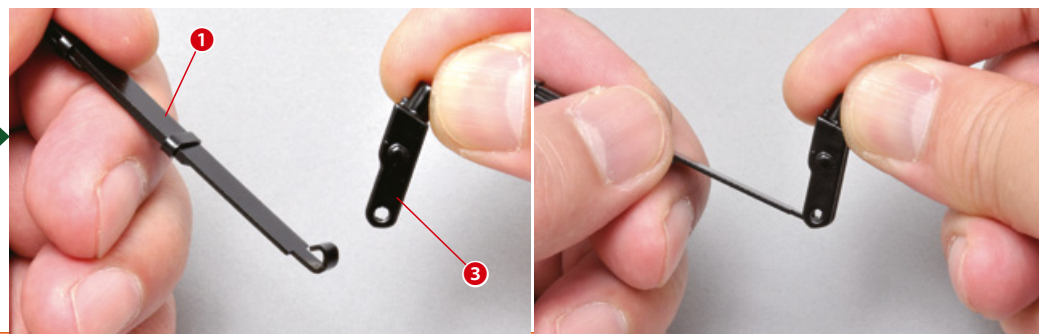


Put the leaf spring L and the two brackets on your work surface, positioning the pieces as shown in the photo.

To join the pieces, put the short linchpin through the holes in the bracket and the leaf spring.



Look at the photos carefully and then attach bracket B to the corresponding end of the leaf spring.





COSMO SPORT

Step 2 The brackets – 2



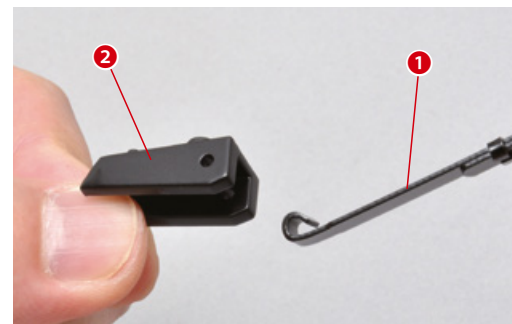
Get the board and hammer you received with stage 17 and hammer the linchpin until it is completely inserted.



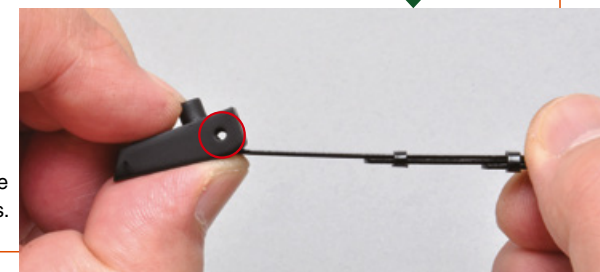
Don't worry if one end of the linchpin is flattened by the hammer; it will have no effect on the rest of the assembly.

COSMO SPORT

Step 3 The brackets – 3



Now join bracket A to the other end of the leaf spring, positioning the pieces as shown in the photo.



Align the holes in the two pieces.

COSMO SPORT

Step 4 The brackets – 4



Put the long linchpin through the holes.



Again, you can use the hammer and board to help you insert the linchpin completely.

FINAL RESULT

The first leaf spring of your model is now finished. Keep it in a safe place with the rest of the pieces.

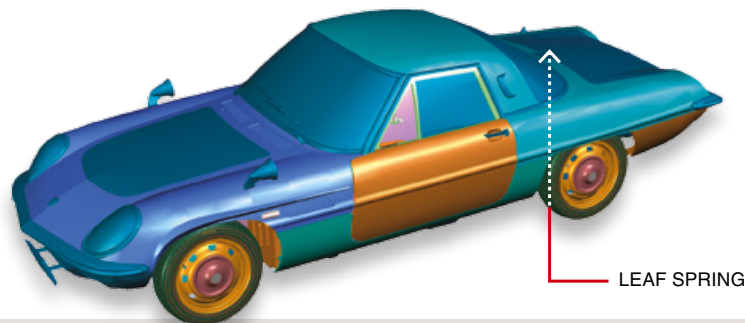


The next stage



48 THE LEAF SPRINGS – 2

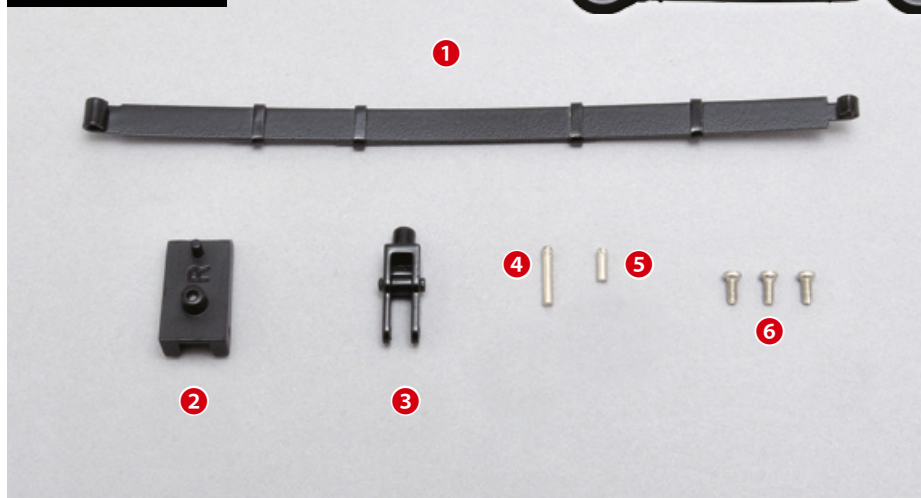
In this stage you will work on the right leaf spring of the rear suspension system. The steps are the same as those in the previous stage; follow our instructions and the accompanying photos carefully.



TOOLS NEEDED

- Hammer (received with stage 17)
- Board (received with stage 17)

LIST OF PIECES

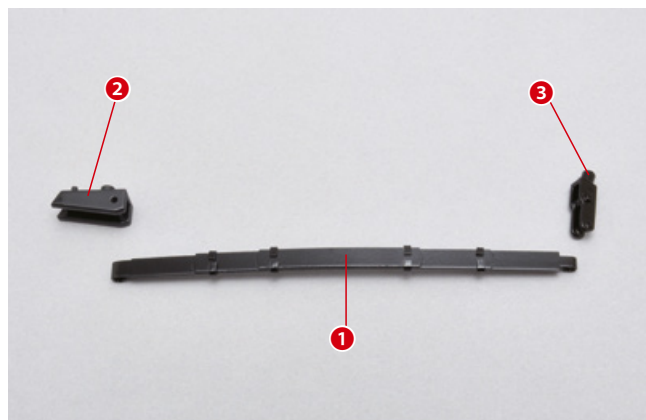


- 1 Leaf spring R
- 2 Bracket A
- 3 Bracket B
- 4 Long linchpin
- 5 Short linchpin
- 6 Screws (2.3 x 4mm) x3

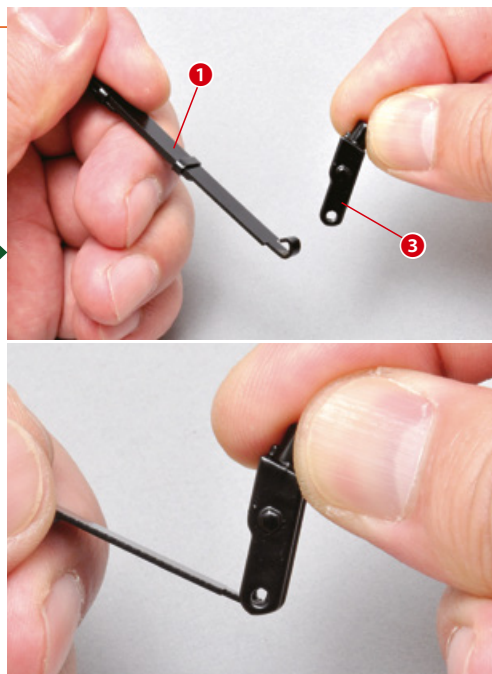
COSMO SPORT

Step

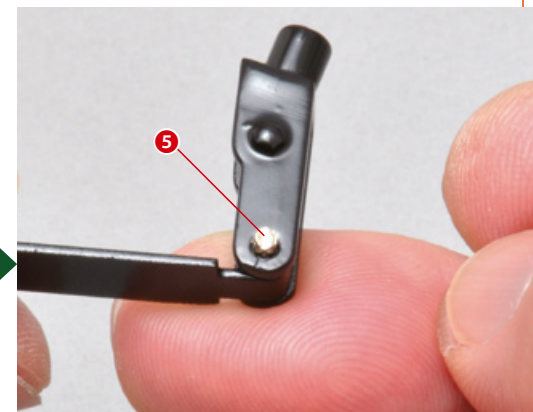
1 The brackets – 1



Put the leaf spring R and the two brackets on your work surface, positioning the pieces as shown in the photo.



Look at the photos carefully and then attach bracket B to the corresponding end of the leaf spring.



To join the pieces, put the short linchpin through the holes in the bracket and the leaf spring.



COSMO SPORT

Step 2 The brackets – 2



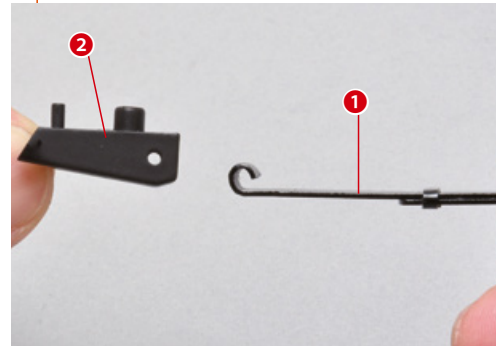
Get the board and hammer you received with stage 17 and hammer the linchpin until it is completely inserted.



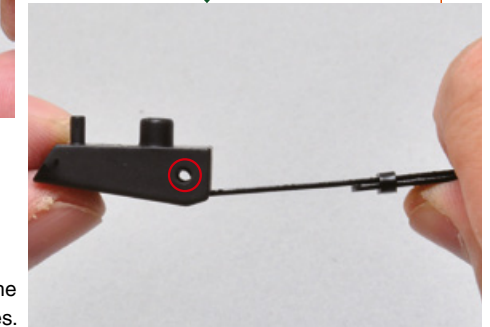
As in the previous step, don't worry if one end of the linchpin is flattened.

COSMO SPORT

Step 3 The brackets – 3



Now join bracket A to the other end of the leaf spring, positioning the pieces as shown in the photo.



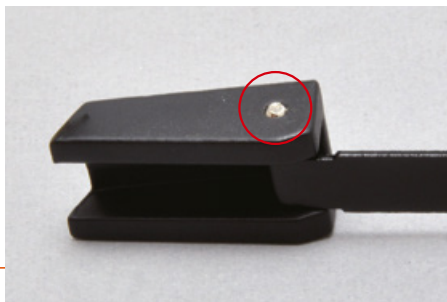
Align the holes in the two pieces.

COSMO SPORT

Step 4 The brackets – 4



Put the long linchpin through the holes.



Again, you can use the hammer and board to help you insert the linchpin completely.

FINAL RESULT

The second leaf spring is also finished. Keep it in a safe place with the rest of the pieces.

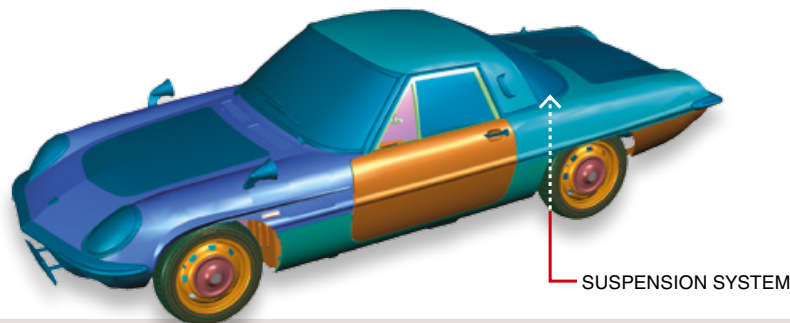


The next stage



49 THE REAR SUSPENSION

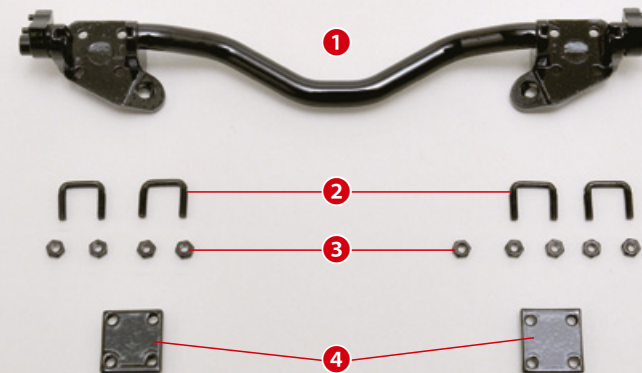
In this stage you start assembling the rear suspension system by attaching the leaf springs to the De Dion axle. Follow our instructions and the explanatory photos carefully.



TOOLS NEEDED

- Thread-locker
- Tweezers

LIST OF PIECES



- 1 De Dion axle
- 2 Bolts x4
- 3 Nuts x9
- 4 Plates x2

COSMO SPORT

Step

1 Preparation



In this stage you will need to use a liquid thread-locker, like the example in the photo on the left.



Look at the photo carefully to see which way the leaf springs and the axle should face.

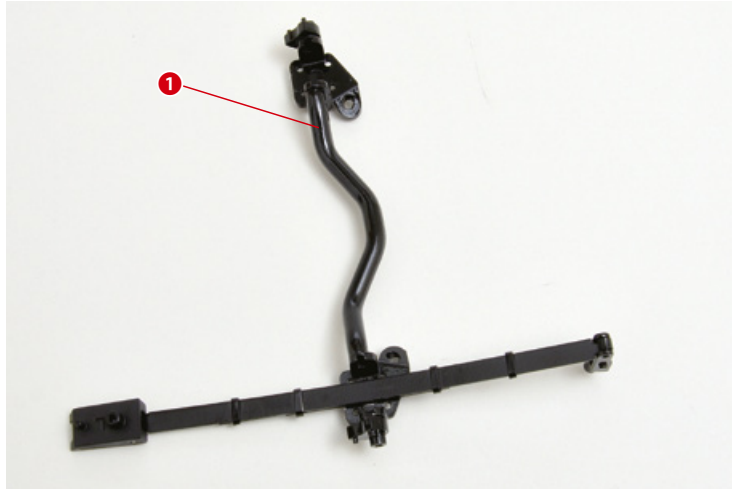


COSMO SPORT

Step

2

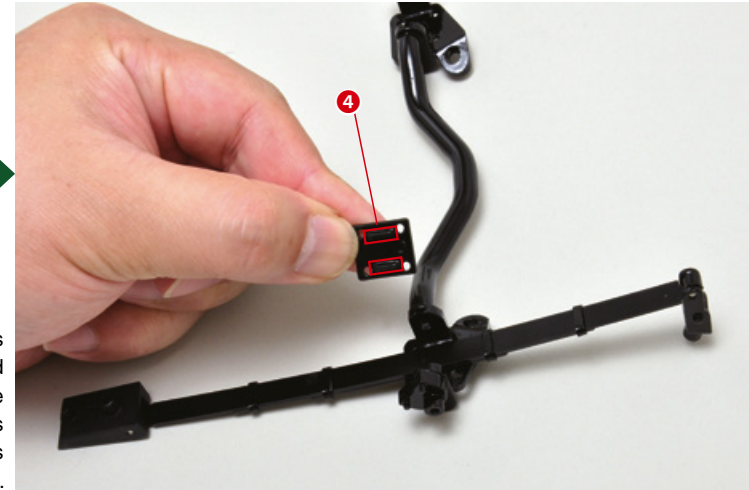
The leaf springs – 1



Position the left leaf spring on the axle as shown in the photo.



Get one of the plates supplied with this stage and position it as shown in the photo, using the elements indicated by the red boxes to help you.

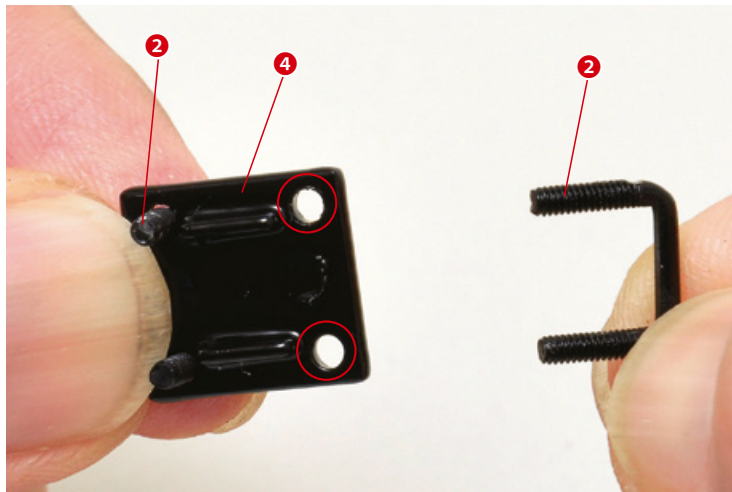


COSMO SPORT

Step

3

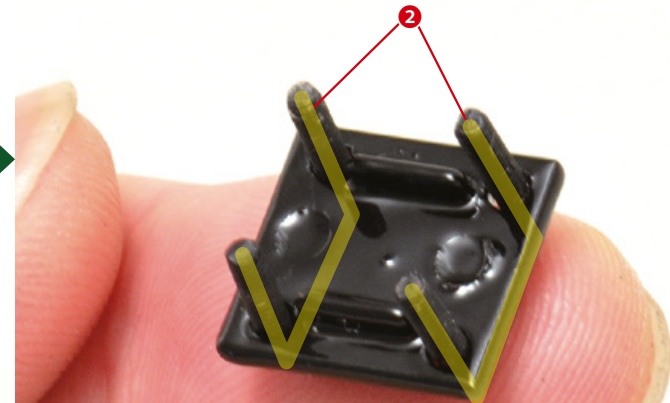
The leaf springs – 2



Insert two bolts into the plate, positioning the pieces as shown in the photo.



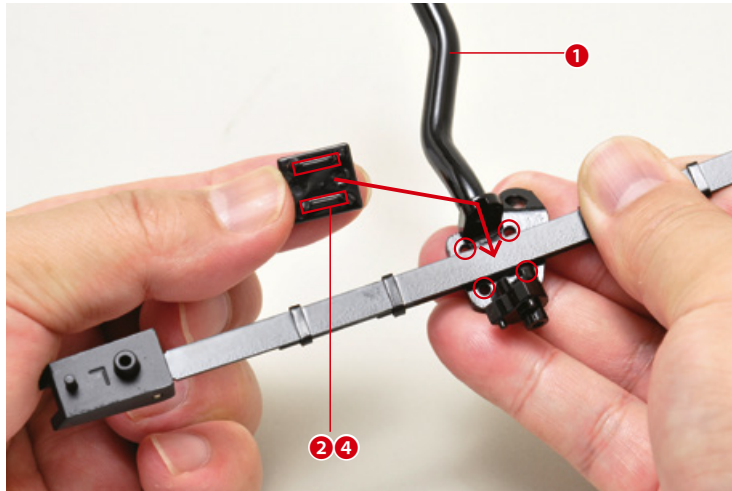
The two bolts correctly inserted into the plate.





COSMO SPORT

Step

4 The leaf springs – 3

Insert the bolts on the plate into the holes in the piece composed of the axle and the left leaf spring.



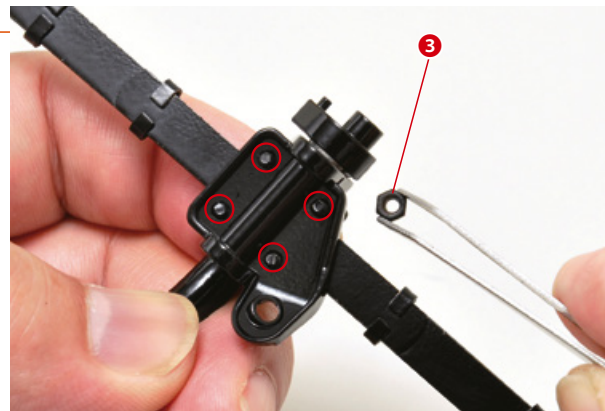
Press down until the pieces click into place.

COSMO SPORT

Step

5 The leaf springs – 4

Turn the suspension over and hold the plate in place with your finger.



Screw four nuts onto the ends of the bolts.

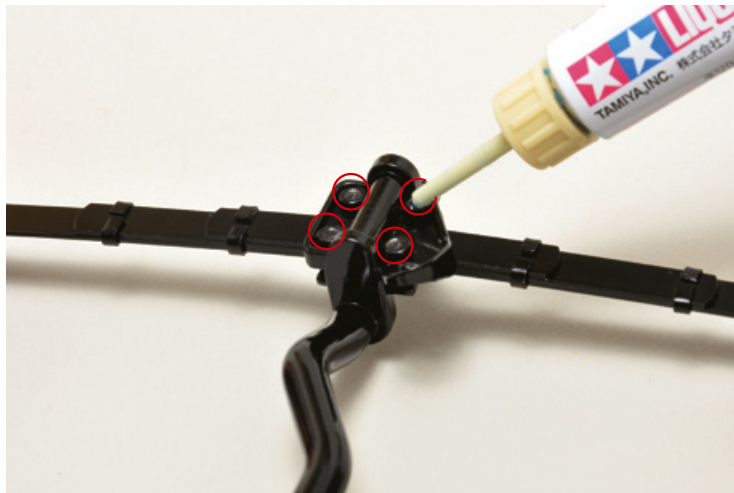


Tighten the nuts to lock the bolts in place, but don't over tighten them. All the nuts should be the same height.



COSMO SPORT

Step 6 The leaf springs – 5



Apply a small amount of thread-locker to the four ends of the bolts.

At this point, the nuts should not have been overtightened and therefore the leaf spring is still free to move back and forth. This piece will be adjusted in one of the next stages.

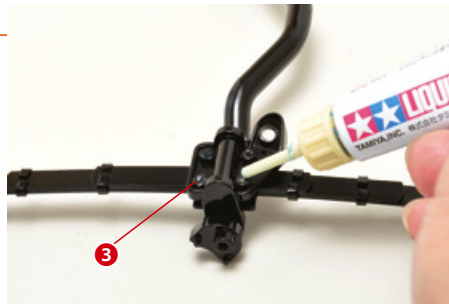


COSMO SPORT

Step 7 The leaf springs – 6

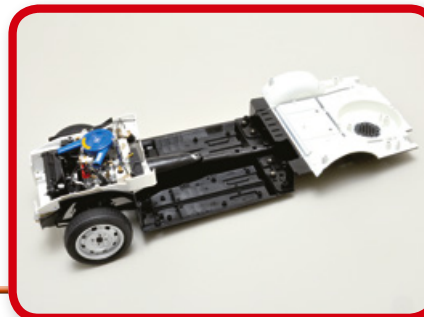


Repeat the previous steps to attach the right leaf spring to the other end of the axle.



FINAL RESULT

This is the result of this satisfying assembly session. Keep the rear suspension in a safe place, along with the rest of the pieces.

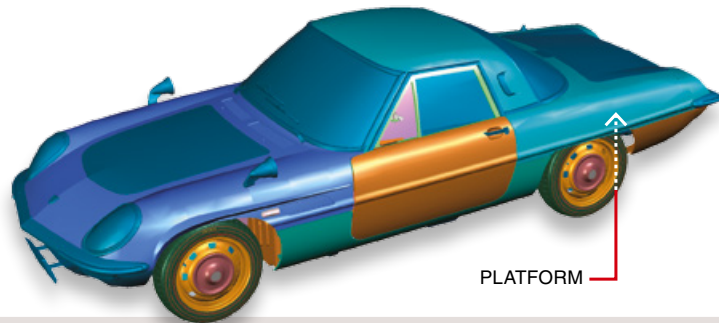


The next stage



50 THE REAR PLATFORM

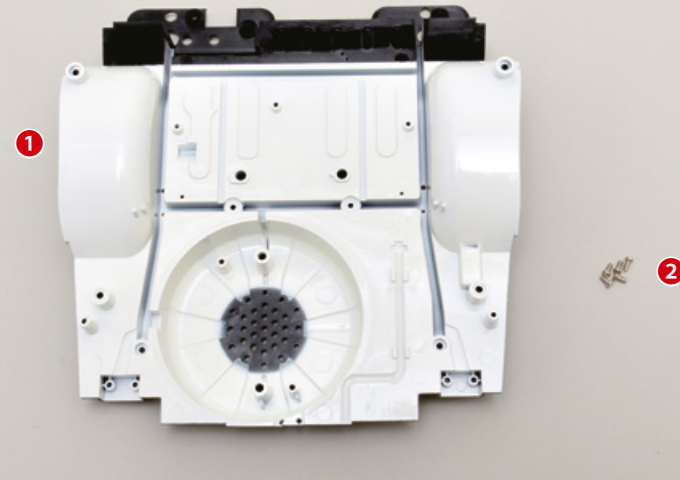
In this stage you will attach the rear platform to the front half of your model: you will then begin to get an idea of the final size of your 1:8 scale Mazda Cosmo Sport.



TOOLS NEEDED

- Cross screwdriver no. 1

LIST OF PIECES

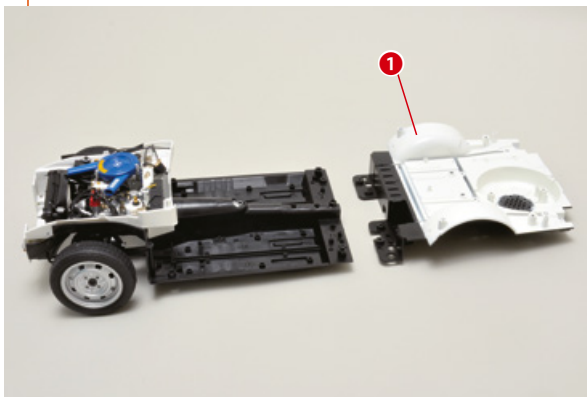


- 1 Rear platform
- 2 Screws (2.3 x 4mm) x5

COSMO SPORT

Step

1 The platform – 1



Put the front half of your model and the rear platform that came with this stage on your work surface.



Join the pieces by aligning the interlocking elements indicated in the photo.



Press the parts together until they lock.

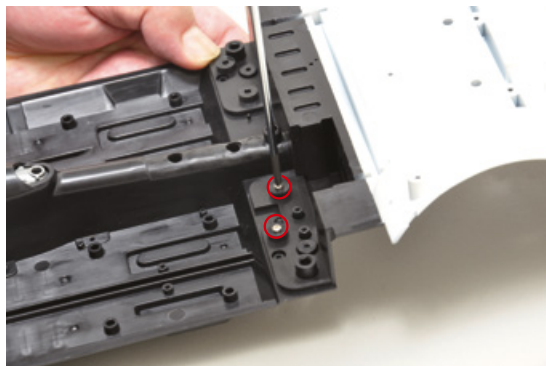


COSMO SPORT

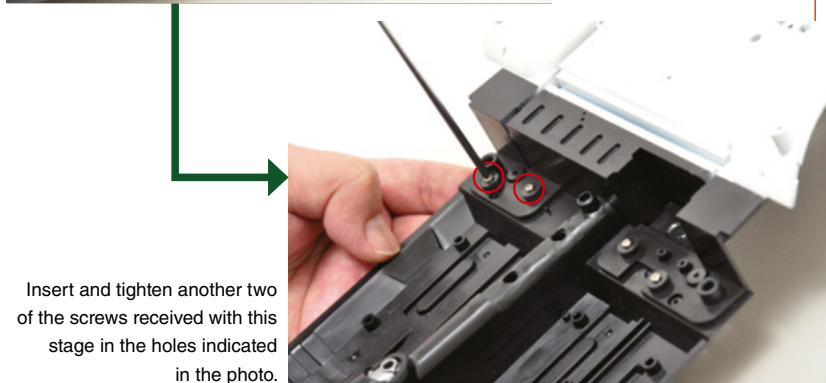
Step

2

The platform – 2



Insert and tighten two of the screws received with this stage in the holes indicated in the photo.



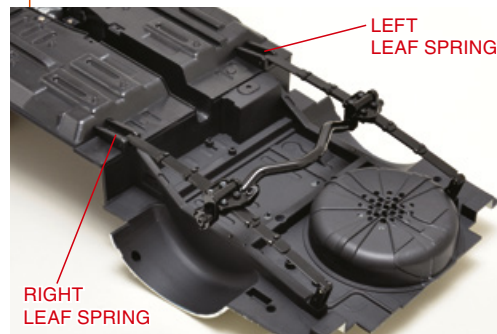
Insert and tighten another two of the screws received with this stage in the holes indicated in the photo.

COSMO SPORT

Step

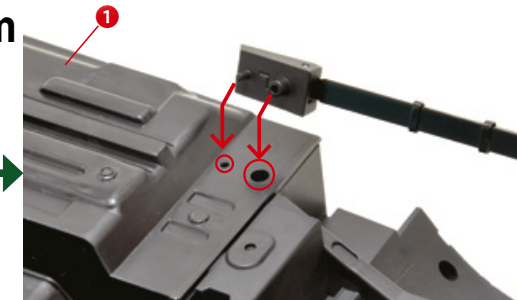
3

The suspension system



Temporarily install the rear suspension on your model, as shown in the photo. You will secure it permanently in one of the next stages.

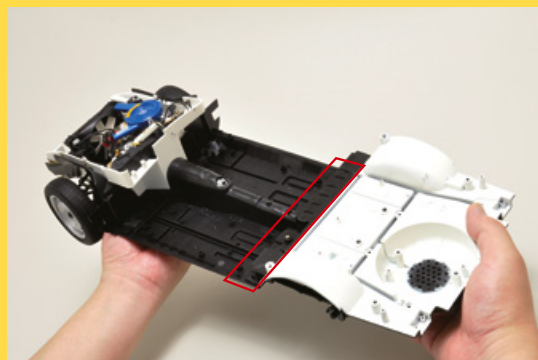
Insert the linchpins on brackets B of both leaf springs into the corresponding holes in the platform.



Insert the linchpins on bracket A of the left leaf spring into the holes in the platform circled in the photo; repeat for the right leaf spring.



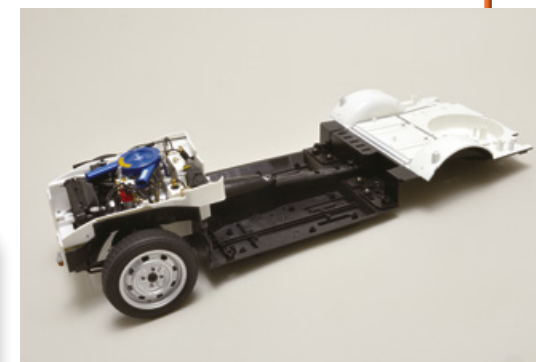
WARNING!



Your model is now quite heavy, and the two halves of the platform are only joined together by four screws. To prevent components being damaged while moving them, we recommend that you hold your model as shown in the photo on the left.

FINAL RESULT

You can now start seeing what your Mazda Cosmo Sport model will look like when it's finished. Be careful when you handle it, and remove the rear suspension for now.



The next stage