

Lexington-Richland School District Five

Growth Forecasting and Redistricting Study

Additional Scenarios (5 & 6)

January 25, 2021



Recap of Process to Date



Collected and Analyzed Data



Identified Trends



Projected Enrollment



Assessed Growth and Facilities



Engaged the Community



Developed Initial Scenarios

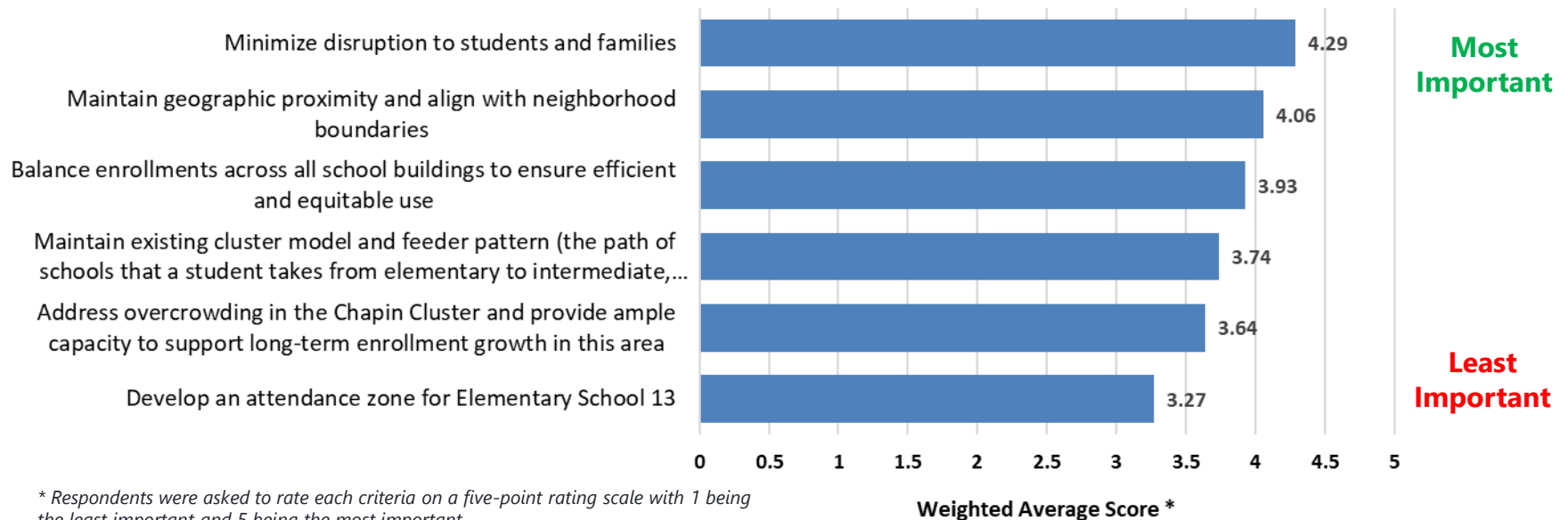
Initial Scenarios: Recap

Scenario	Objective	Pros	Cons
Scenario 1	<ul style="list-style-type: none"> Minimize Disruption Focus on Chapin Cluster Eliminate Split Feeder Pattern Piney Woods PK-4 	<ul style="list-style-type: none"> ES enrollment balance Lowest redistricting impacts 	<ul style="list-style-type: none"> CHS would be overcrowded “Pocket” redistricting at HS level
Scenario 2	<ul style="list-style-type: none"> Minimize Disruption Focus on Chapin Cluster Address CHS overcrowding Piney Woods PK-5 	<ul style="list-style-type: none"> Enrollment balance across all grade groupings HS can be “phased in” over time 	<ul style="list-style-type: none"> Greater redistricting impacts than Scenario 1 Split HS feeder pattern
Scenario 3	<ul style="list-style-type: none"> Optimize Elementary Enrollment Comprehensive Redistricting Piney Woods PK-5 	<ul style="list-style-type: none"> Optimized ES enrollment ensures efficient and equitable use Direct feeder pattern 	<ul style="list-style-type: none"> DFMS would be overcrowded Greatest redistricting impacts “Pocket” redistricting
Scenario 4	<ul style="list-style-type: none"> Balance Disruption with Enrollment Optimization Piney Woods PK-5 	<ul style="list-style-type: none"> Enrollment balance across all grade groupings MS/HS can be “phased in” over time 	<ul style="list-style-type: none"> Moderate redistricting impacts “Pocket” redistricting Split MS/HS feeder pattern

Online Community Survey

- Provided feedback on Guiding Criteria
- Ran from July 14, 2020 through July 31, 2020
- **7,664 individual responses**

Guiding Criteria: Weighted Average Score



Virtual Platform Map Viewer

Scenario 1

Use the magnifying glass in the upper left hand corner to search by address, or use the cross hairs on the bottom right to zoom to your location. The map is colored based on the elementary attendance zones under Scenario 1. Click on an attendance zone to discover the intermediate, middle, and high schools that belong to each area.

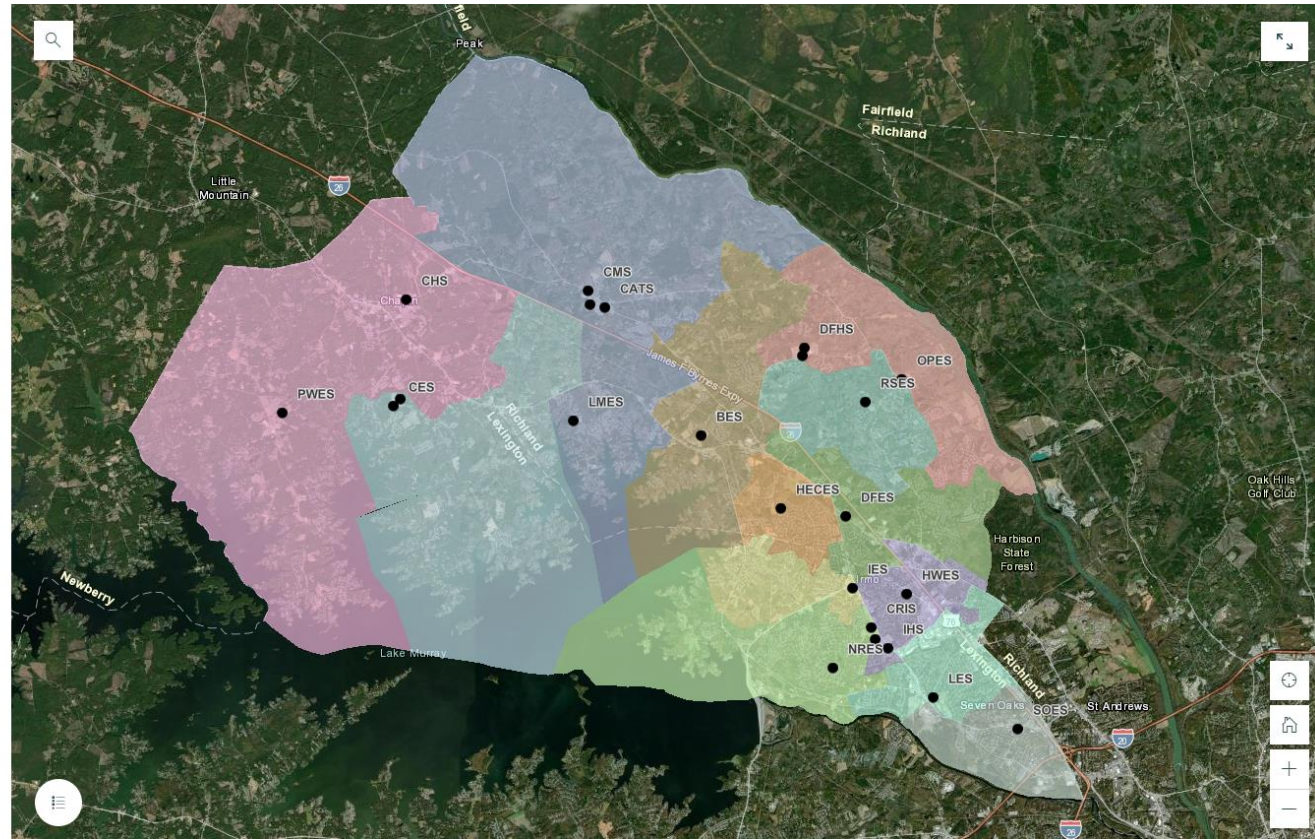
Legend

District Schools



Scenario 1

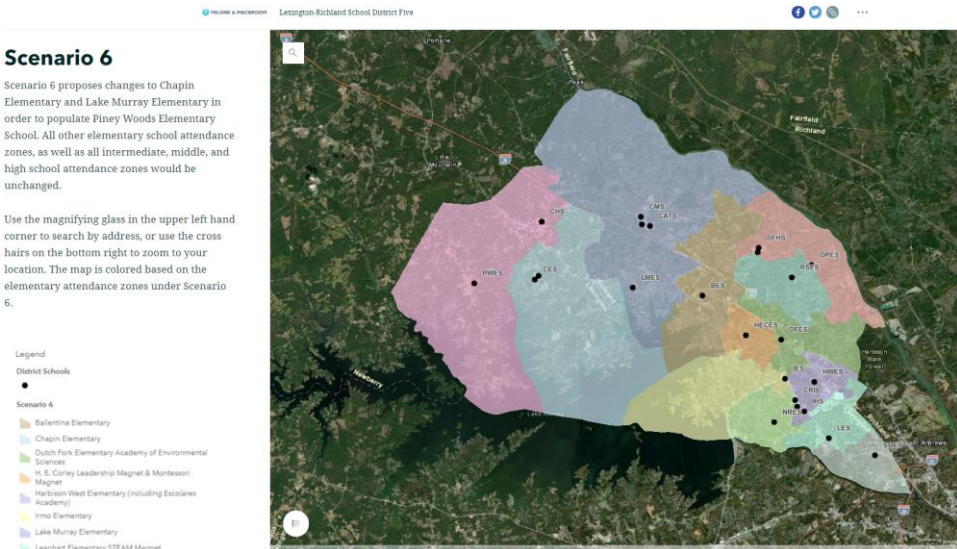
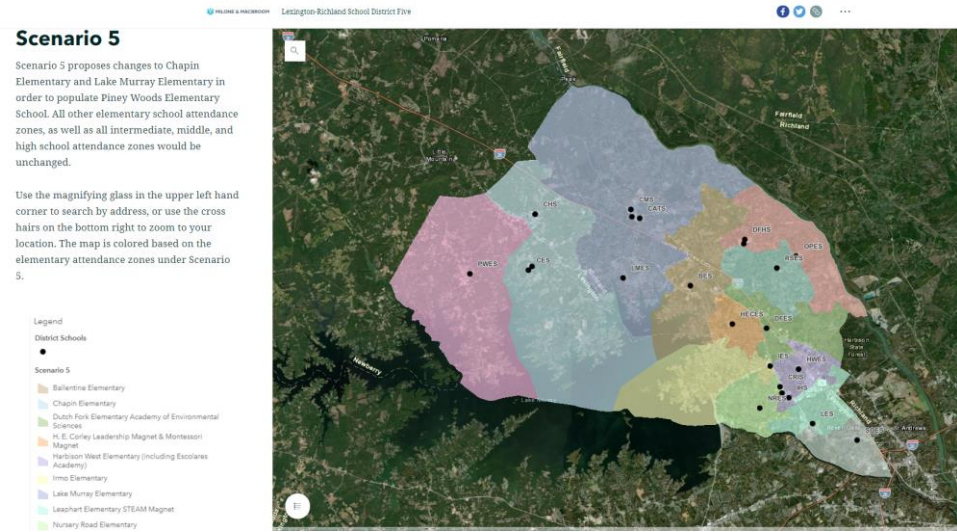
- Ballentine Elementary
- Chapin Elementary
- Dutch Fork Elementary Academy of Environmental Sciences
- H. E. Corley Leadership Magnet & Montessori Magnet
- Harbison West Elementary (including Escolares Academy)
- Irmo Elementary
- Lake Murray Elementary
- Leaphart Elementary STEAM Magnet
- Nursery Road Elementary
- Oak Pointe Elementary
- Piney Woods Elementary



- Allows public to view Scenarios, understand impacts, and provide feedback
- Launched on October 12, 2020
- **3,133 page views through January 14, 2021**

Virtual Platform Update

- Updates to virtual platform launched on January 15th, 2021
- Includes maps for the additional scenarios
- 660 additional page views



Additional Scenarios

Additional Scenarios

- Focus on short term efforts needed for next school year:
 - Create attendance zone for Piney Woods for the 2021-2022 school year
 - PK-4 Grade Configuration
 - No immediate changes to intermediate, middle, and high school attendance zones or grade level configuration
- Based on Feedback and Direction from Board Workshop, two additional elementary school Scenarios (5 & 6) were generated for consideration

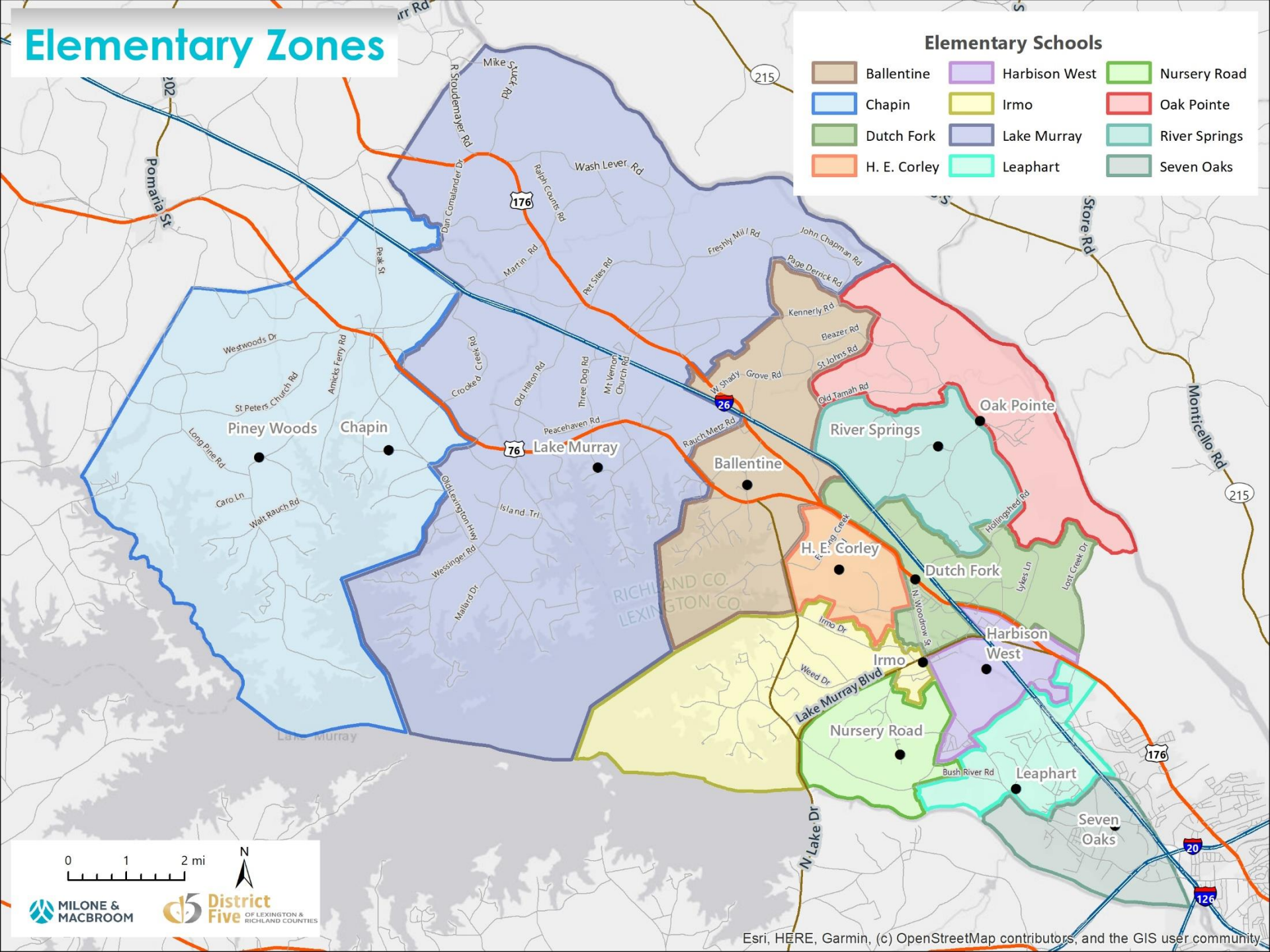
Assumptions

- No changes to current open choice or magnet students and programs
- No changes to current special education students and programs
- Students impacted by the enrollment freeze are assumed to stay in current buildings and pathways
- No changes to current Pre-K enrollment levels or program placement
 - Assumes 40 additional Pre-K students at Piney Woods

Elementary Zones

Elementary Schools

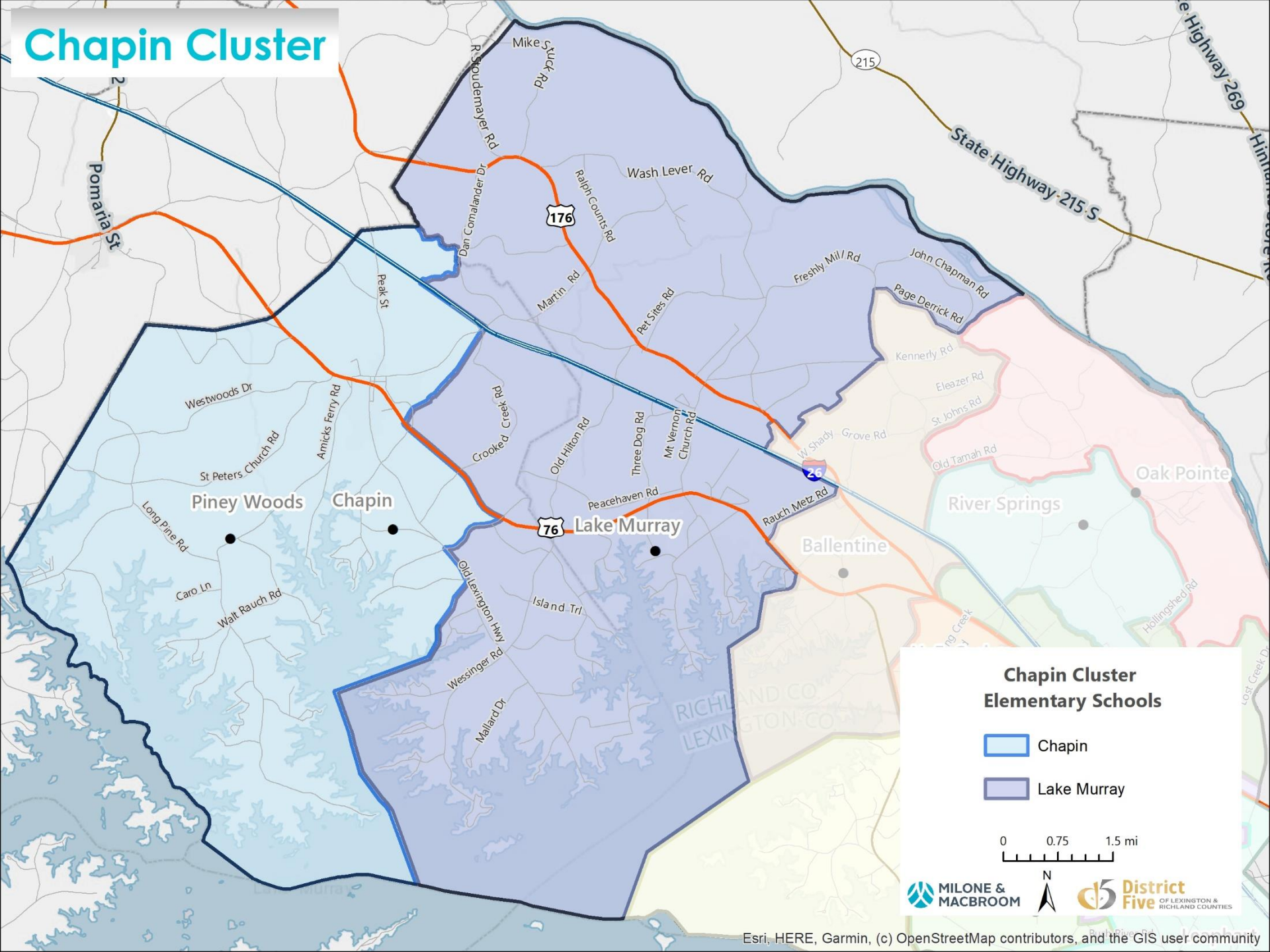
- | | | |
|--|--|---|
|  Ballentine |  Harbison West |  Nursery Road |
|  Chapin |  Irmo |  Oak Pointe |
|  Dutch Fork |  Lake Murray |  River Springs |
|  H. E. Corley |  Leaphart |  Seven Oaks |



0 1 2 mi



Chapin Cluster



Chapin Cluster Elementary Schools

-  Chapin
-  Lake Murray

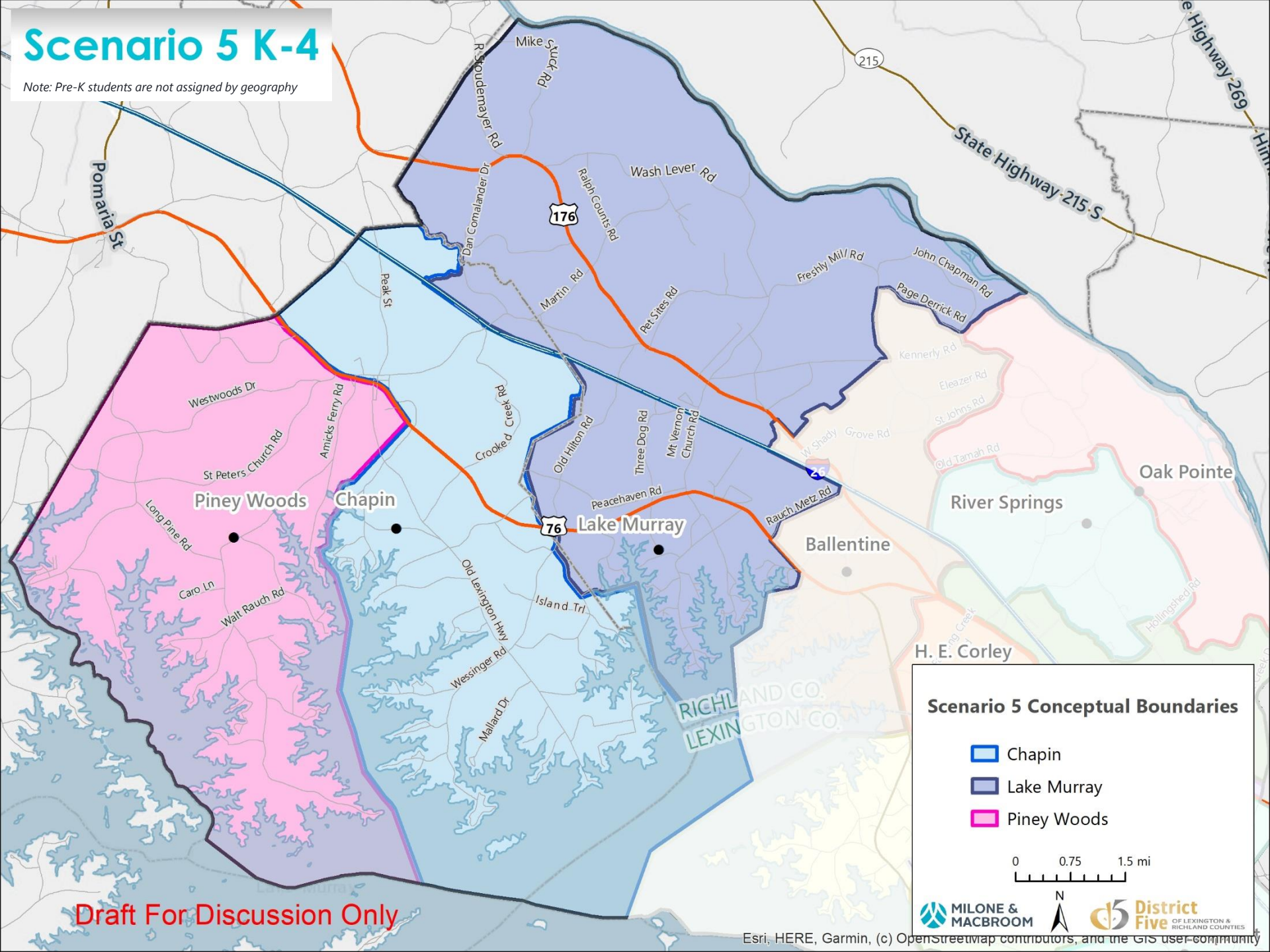


Scenario 5: Objectives

- Create attendance zone for Piney Woods Elementary School
- Opens with a PK-4 grade configuration at Piney Woods
 - Assumes 40 PK students at Piney Woods
- Align boundaries with major roadways to optimize travel times and traffic flow in the Chapin area
- Preserve space for future residential development in Piney Woods area

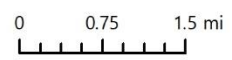
Scenario 5 K-4

Note: Pre-K students are not assigned by geography



Scenario 5 Conceptual Boundaries

- Chapin
- Lake Murray
- Piney Woods



MILONE & MACBROOM
District Five
OF LEXINGTON & RICHLAND COUNTIES

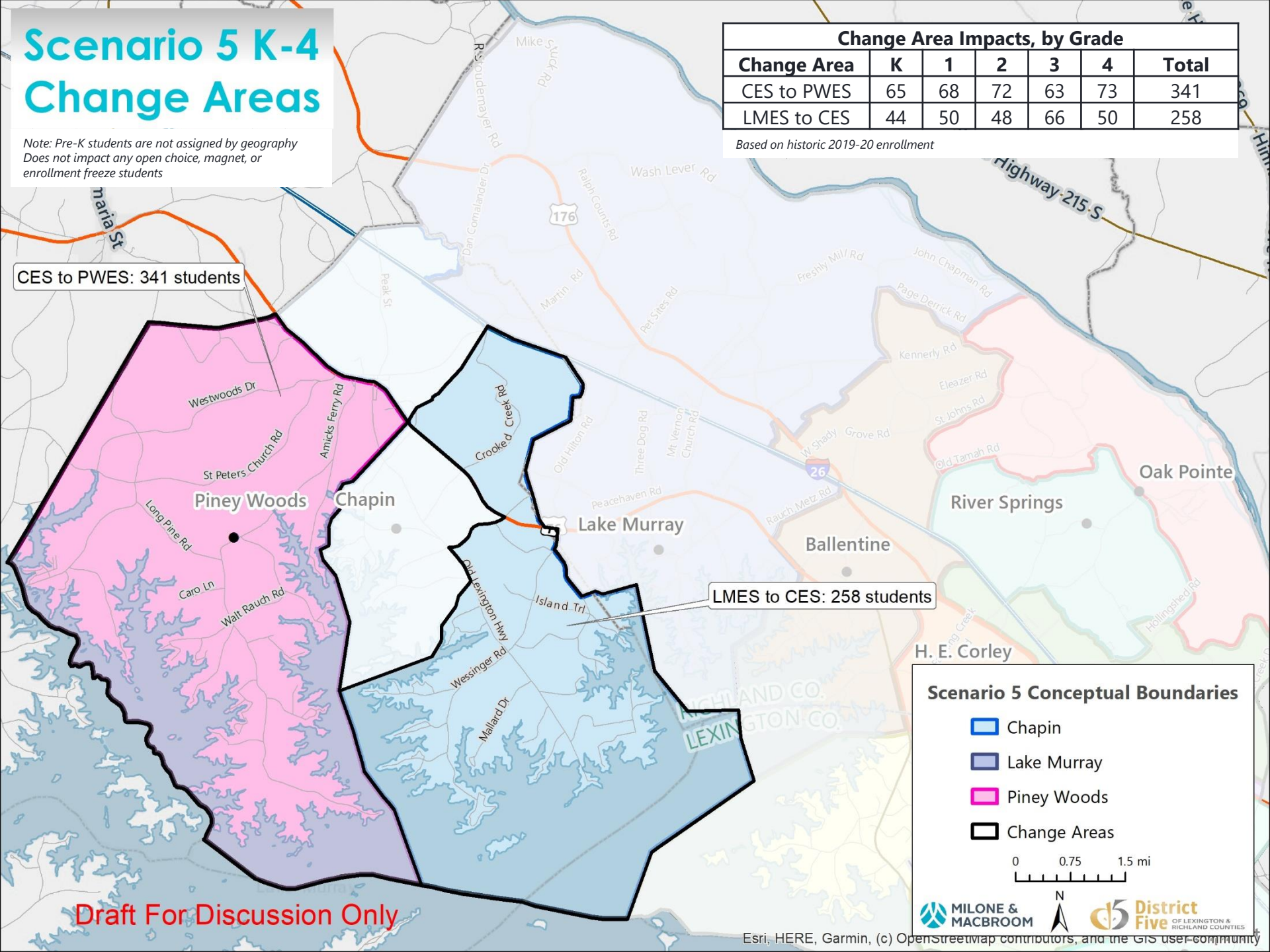
Draft For Discussion Only

Scenario 5 K-4 Change Areas

Note: Pre-K students are not assigned by geography
Does not impact any open choice, magnet, or enrollment freeze students

Change Area Impacts, by Grade						
Change Area	K	1	2	3	4	Total
CES to PWES	65	68	72	63	73	341
LMES to CES	44	50	48	66	50	258

Based on historic 2019-20 enrollment



CES to PWES: 341 students

LMES to CES: 258 students

Draft For Discussion Only

Scenario 5 Conceptual Boundaries

- Chapin
- Lake Murray
- Piney Woods
- Change Areas

0 0.75 1.5 mi



Scenario 5: Elementary Projections

Projections for Impacted Schools in Chapin Cluster

School	2020-21	2021-22	2022-23	2023-24	2024-25	2025-26	2026-27	2027-28	2028-29	2029-30	Enrollment Target
Chapin Elementary	812	803	834	812	808	799	796	795	802	800	824
Lake Murray Elementary	715	731	753	749	749	743	739	738	746	744	764
Piney Woods Elementary School	397	419	422	428	434	430	429	428	432	431	630

Source: MMI Medium Projections

Assumes current choice, magnet, and enrollment freeze students remain in current buildings

Optimal

Near Target

Over Target

- Addresses elementary overcrowding in Chapin Cluster
 - PWES populated at ~430 PK-4 students
 - CES and LMES both operating near enrollment target
- At some point in the future, should the Board decide to include 5th grade at PWES, it would add an additional ~70 students (approx. 500 total)
- Opportunities to expand programming at PWES (larger Pre-K program, Open Choice, etc.)

Scenario 5: Takeaways

Scenario	Pros	Cons
Scenario 5	<ul style="list-style-type: none">• Minimizes redistricting impacts (8% of elementary students)• ES enrollment balance• No changes to IS, MS, and HS attendance zones• Maintains feeder pattern	<ul style="list-style-type: none">• Overcrowding projected at CIS, CMS, and CHS beginning in 2025-26• Capacity to support future growth primarily at PWES.

Considerations for the Future

- Near Term: Consider expanding programming at PWES to increase student population (4k program, Open Choice, other)
- Long Term: Consider adding 5th grade to PWES if enrollment pressures warrant
- Long Term: Address projected overcrowding at CIS, CMS, and CHS

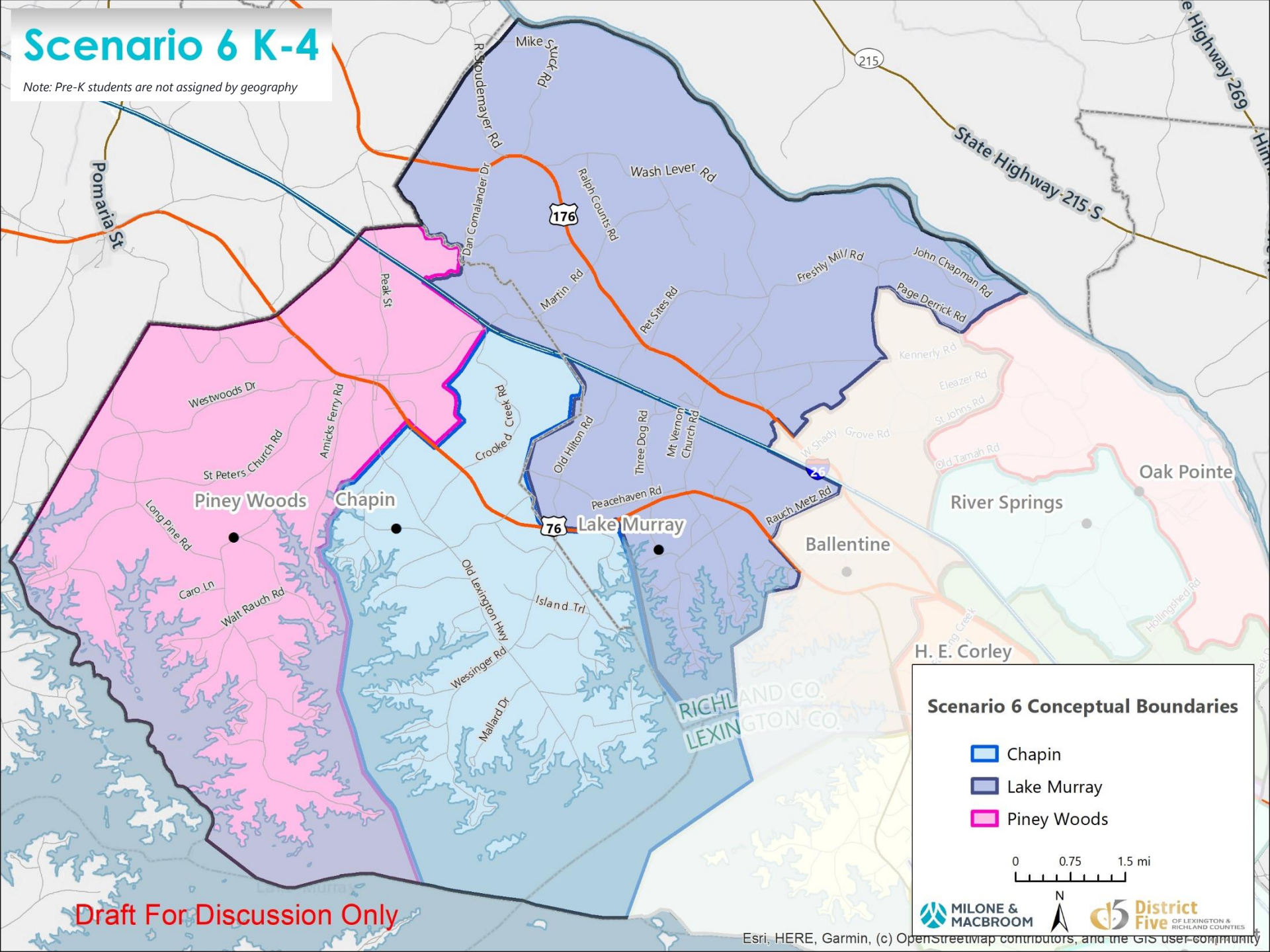
Scenario 6: Objectives

Similar to Scenario 5:

- Create attendance zone for Piney Woods Elementary School
- Opens with a PK-4 grade configuration at Piney Woods
 - Assumes 40 PK students at Piney Woods
- Align boundaries to optimize travel times and traffic flow in the Chapin area
 - Slightly larger PWES attendance zone compared to Scenario 5

Scenario 6 K-4

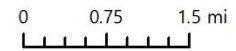
Note: Pre-K students are not assigned by geography



Draft For Discussion Only

Scenario 6 Conceptual Boundaries

- Chapin
- Lake Murray
- Piney Woods

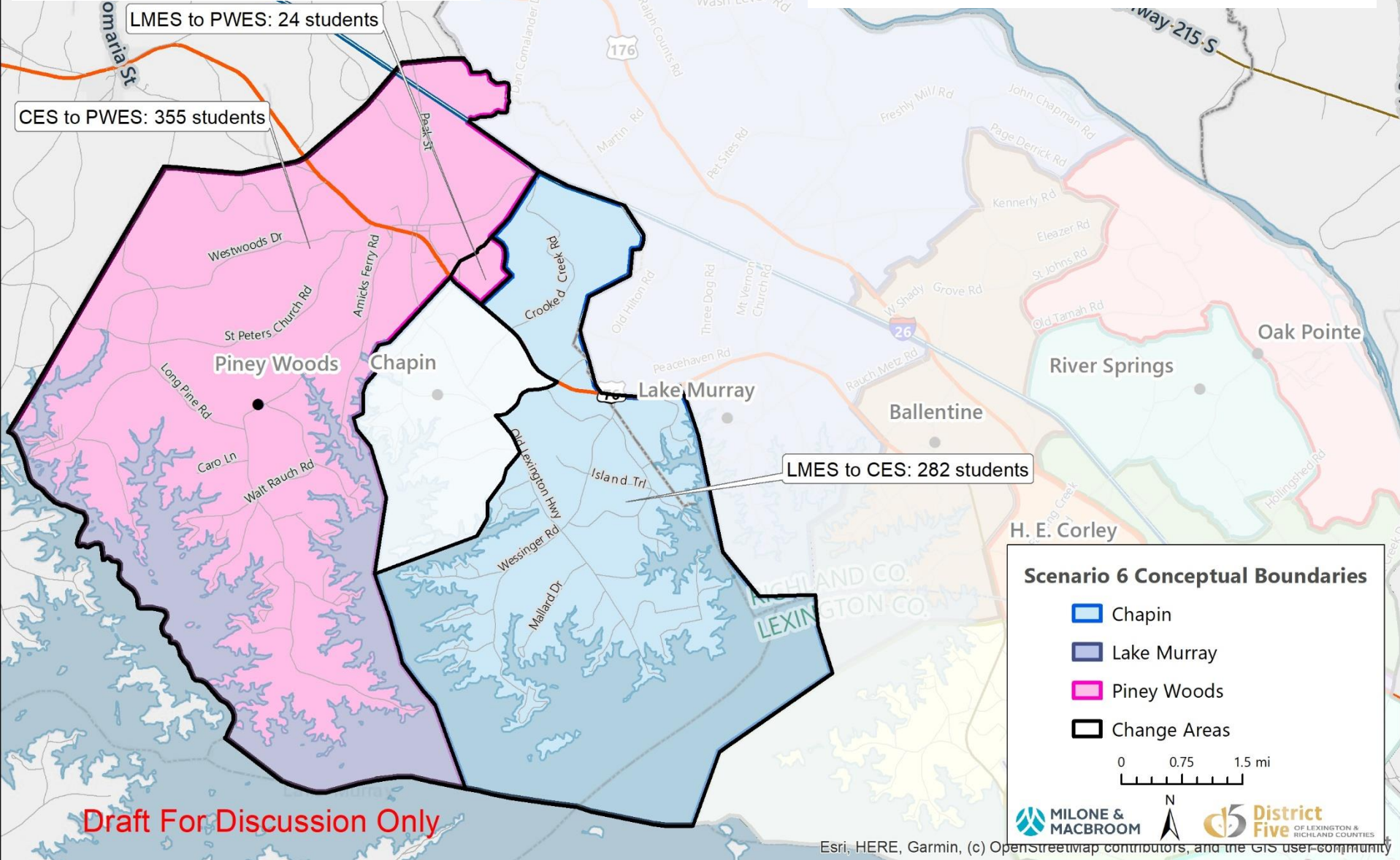


Scenario 6 K-4 Change Areas

Note: Pre-K students are not assigned by geography
Does not impact any open choice, magnet, or enrollment freeze students

Change Area Impacts, by Grade						
Change Area	K	1	2	3	4	Total
CES to PWES	68	71	77	65	74	355
LMES to PWES	7	4	1	9	3	24
LMES to CES	48	55	53	66	60	282

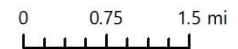
Based on historic 2019-20 enrollment



Draft For Discussion Only

Scenario 6 Conceptual Boundaries

- █ Chapin
- █ Lake Murray
- █ Piney Woods
- █ Change Areas



Scenario 6: Elementary Projections

Projections for Impacted Schools in Chapin Cluster

School	2020-21	2021-22	2022-23	2023-24	2024-25	2025-26	2026-27	2027-28	2028-29	2029-30	Enrollment Target
Chapin Elementary	811	805	832	803	799	792	790	788	796	790	824
Lake Murray Elementary	667	681	702	698	700	694	691	688	695	694	764
Piney Woods Elementary School	435	450	452	457	460	456	455	455	458	457	630

Source: MMI Medium Projections

Assumes current choice, magnet, and enrollment freeze students remain in current buildings

Optimal

Near Target

Over Target

- Addresses elementary overcrowding in Chapin Cluster
 - PWES populated at ~460 PK-4 students
- At some point in the future, should the Board decide to include 5th grade at PWES, it would add an additional ~85 students (approx. 545 total)
- Opportunities to expand programming at PWES (larger Pre-K program, Open Choice, etc.)

Scenario 6: Takeaways

Scenario	Pros	Cons
Scenario 6	<ul style="list-style-type: none"> Minimizes redistricting impacts (9% of elementary students) ES enrollment balance No changes to IS, MS, and HS attendance zones Maintains feeder pattern Better enrollment balance in Chapin Cluster compared to Scenario 5 	<ul style="list-style-type: none"> Overcrowding projected at CIS, CMS, and CHS beginning in 2025-26 Capacity to support future growth primarily at PWES.

Considerations for the Future

- Near Term: Consider expanding programming at PWES to increase student population (4k program, Open Choice, other)
- Long Term: Consider adding 5th grade to PWES if enrollment pressures warrant
- Long Term: Address projected overcrowding at CIS, CMS, and CHS

Scenario Recap

Scenarios	PWES Grade Configuration	Redistricting Impacts	Overcrowding	Projected Enrollment (Target)		
				PWES (630)	CES (824)	LMES (764)
Scenario 1	PK-4	ES: 11% IS/MS: 1% HS: 1%	Overcrowding at CHS	520-544 students	726-780 students	645-675 students
Scenario 2	PK-5	ES: 11% IS/MS: 1% HS: 3%	None	532-570 students	799-846 students	647-679 students
Scenario 3	PK-5	ES: 26% IS/MS: 7% HS: 4%	Overcrowding at DFMS	534-571 students	748-795 students	658-711 students
Scenario 4	PK-5	ES: 13% IS/MS: 7% HS: 7%	None	534-570 students	780-828 students	664-701 students
Scenario 5	PK-4	ES: 8% IS/MS: None HS: None	Overcrowding at CIS, CMS, and CHS	397-434 students	795-834 students	715-753 students
Scenario 6	PK-4	ES: 9% IS/MS: None HS: None	Overcrowding at CIS, CMS, and CHS	435-460 students	788-832 students	667-702 students

Discussion Items

Question: What are the current and projected enrollments by grade without School Choice?

Question: What are the current and projected enrollments in other programs such as PK4, speech therapy, etc?

Answer: We recognize that there are numerous programs and populations that are based on unique needs and therefore fall outside of “what can be projected.” We do not project enrollment separately for special programs such as Speech Therapy, Special Education, Open Choice, or Magnet programs due to their small sample size and concerns over student privacy. However, these students are accounted for in our methodology as noted in our assumptions.

Discussion Items

Question: What is the capacity of PWES? What is the number of students PWES is configured to hold based on current programs and other limitations?

Answer: PWES has a capacity of 700 students. We are using an enrollment target of 630 students, which is 90% of the building's capacity. When opening a new school, we recommend leaving ample buffer space to account for future housing development, student growth, and programmatic changes.

Question: What are the number of students in each planning block under each scenario?

Answer: The planning blocks do not align exactly with Scenarios 5 and 6. They merely serve as a starting point for the Board Workshop and have since been refined as we developed our scenarios. The maps show redistricted areas under Scenarios 5 and 6 as well as the number of students who would be impacted. This excludes any students who are enrolled in choice programs, magnet programs, or are impacted by the enrollment freeze as discussed in our assumptions.

Discussion Items

Question: How many students would be impacted by grade level? Do these numbers include any choice students?

Answer: The number of impacted students by grade level are shown on the maps. Our projections assume a continuation of current open choice, magnet, and other special programs as noted in our assumptions. These students were not reassigned under any of the Scenarios.

Question: What is the feedback received from parents on the proposed scenarios?

Answer: There have been 660 additional page views on the virtual platform since it was updated on January 15th.

Lexington-Richland School District Five

Growth Forecasting and Redistricting Study

Additional Scenarios

January 25, 2021

