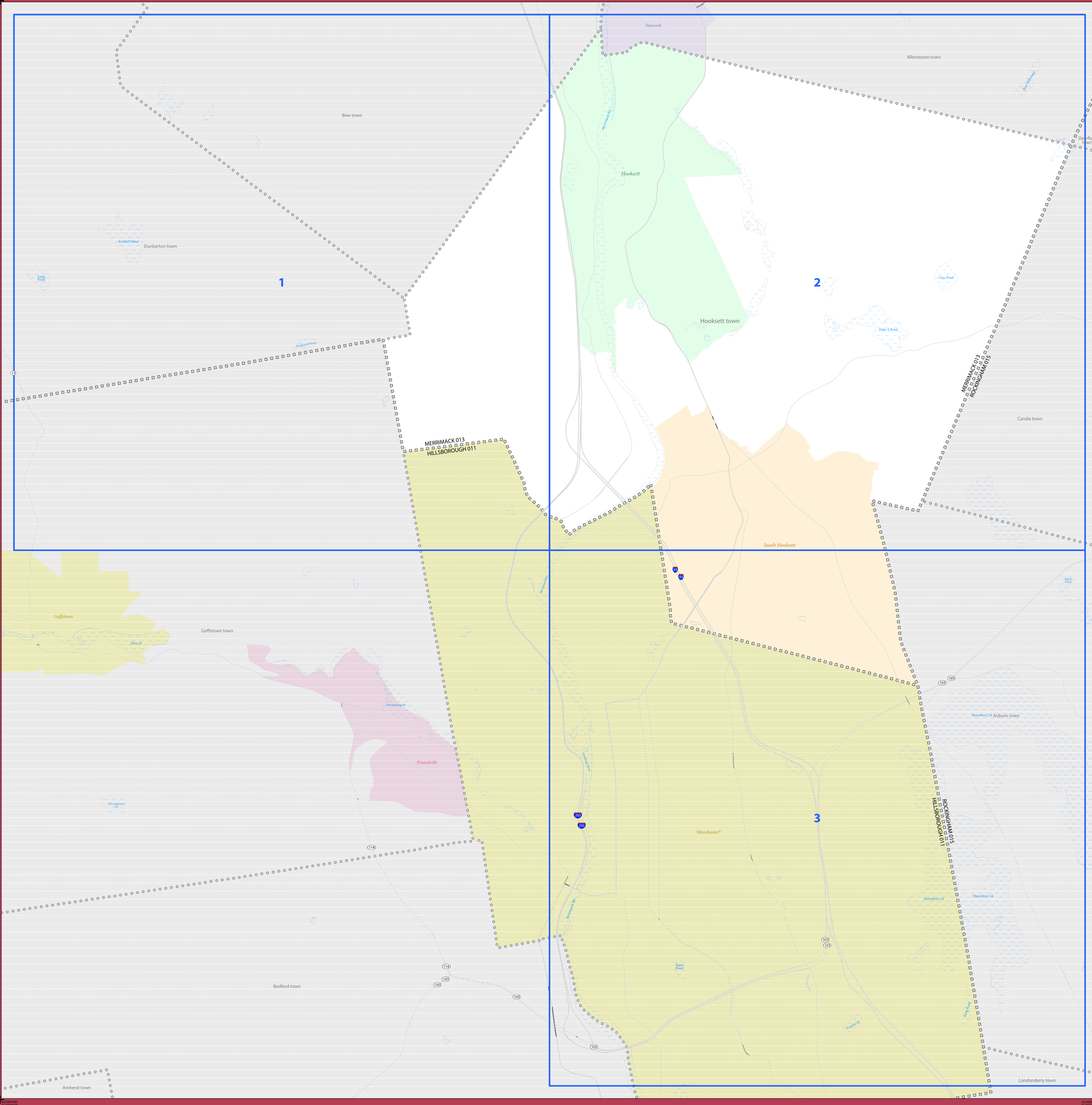


2020 CENSUS - CENSUS BLOCK MAP (INDEX): Hooksett town, NH



LEGEND		
SYMBOL DESCRIPTION	SYMBOL	LABEL STYLE
International or State Water Limit	☆☆☆☆☆	CANADA
Federal American Indian Reservation	★ ★ ★ ★ ★	L'ANSE RESVN 1880
Off-Reservation Trust Land or Hawaiian Home Land	+ + + + +	T1880
Oklahoma Tribal Statistical Area, Alaska Native Village Statistical Area, or Tribal Designated Statistical Area	◆ ◆ ◆ ◆ ◆	KAW OTSA 5690
American Indian Tribal Subdivision	● ● ● ● ●	EAGLE NEST DIST 200
State American Indian Reservation	/// ///	Tama Resvn 9400
State Designated Tribal Statistical Area	◆ ◆ ◆ ◆ ◆	Lumbee SDTSA 9815
Alaska Native Regional Corporation	▼ ▼ ▼ ▼ ▼	MANA ANRC 52120
State (or statistically equivalent entity)	▭ ▭ ▭ ▭ ▭	NEW YORK 36
County (or statistically equivalent entity)	▣ ▣ ▣ ▣ ▣	MONTGOMERY 031
Minor Civil Division (MCD) ¹	○ ○ ○ ○ ○	Bristol town 07485
Census County Division (CCD), Census Subarea (CSA), or Unorganized Territory (UT)	○ ○ ○ ○ ○	Hanna CCD 91650
Consolidated City	○ ○ ○ ○ ○	MILFORD 47500
Incorporated Place ^{1,2}	■ ■ ■ ■ ■	Davis 18100
Census Designated Place (CDP) ²	■ ■ ■ ■ ■	Incline Village 35100
Census Tract ³	■ ■ ■ ■ ■	33.07
Census Block ⁴	■ ■ ■ ■ ■	3012

DESCRIPTION	SYMBOL	DESCRIPTION	SYMBOL
Interstate		Geographic Offset or Corridor	
U.S. Highway		Water Body	
State Highway		Swamp, Marsh, Gravel Pit, or Quarry	
Other Road		Glacier	
Cul-de-sac		Military	
Circle		National or State Park, Forest, or Recreation Area	
RTD Trail, Stairway, Alley, Walkway, or Ferry		College or University	
Railroad		Prison or Juvenile Detention Center	
Pipeline or Power Line		Airport, Airfield, or Helicopter Landing Pad	
Ridge or Fence		Selected Mountain Peaks	
Perennial Stream			
Intermittent Stream			
Island Name	DEER IS		
Nonvisible Boundary or Feature Not Elsewhere Classified			
Inset Area	A	Outside Subject Area	

Where international, state, county, and/or MCD/CCD boundaries coincide, the map shows the boundary symbol for only the highest-ranking of these boundaries. Where American Indian reservation and American Indian tribal subdivision boundaries coincide, the map shows only the American Indian reservation boundaries. Where Oklahoma tribal statistical area boundaries and American Indian tribal subdivision boundaries coincide, the map shows only the Oklahoma tribal statistical area boundaries.

Geographic area names are followed by either their FIPS or census code.

1 A " " following an MCD name denotes a false MCD. A " " following a place name indicates that a false MCD exists that is coterminous with the place and has the same name and FIPS code as the place; the false MCD label is not shown.

2 Place label color corresponds to the place fill color.

3 Census tracts are identified by an up to four-digit integer number and may have an optional two-digit suffix; for example 23 or 1457.02. The census tract codes consist of six digits with an implied decimal between the fourth and fifth digit corresponding to the basic census tract number, but with leading zeros, and trailing zeros for census tracts without a suffix. The tract number examples above would have codes of 002300 and 145702, respectively.

4 A " " following a block number indicates that the block number is repeated elsewhere in the block.

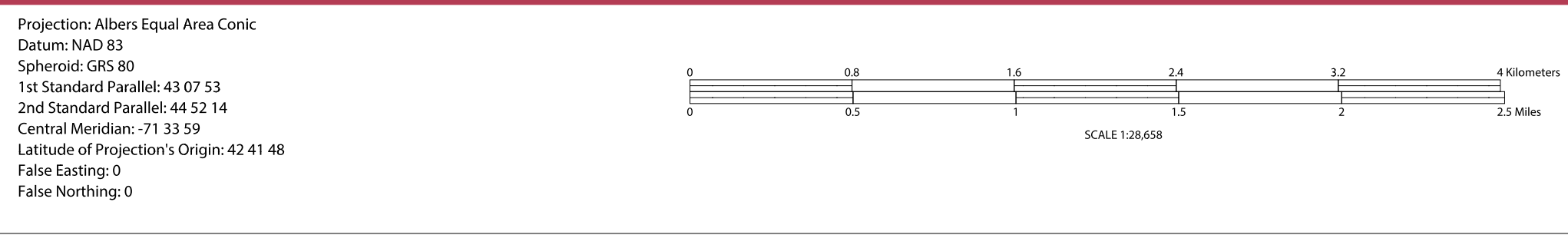
Due to space limitations, some areas and features such as water bodies, colleges, prisons, and roads may not be labeled.

Note: This index map sheet provides the map sheet configuration in relation to the subject entity. Due to scale limitations, map content may be simplified. Refer to parent and/or inset map sheets for detailed map content.

All legal boundaries and names are as of January 1, 2020. The boundaries shown on this map are for Census Bureau statistical data collection and tabulation purposes only; their depiction and designation for statistical purposes does not constitute a determination of jurisdictional authority or rights of ownership or entitlement.

Geographic Vintage: 2020 Census (reference date: January 1, 2020)
Data Source: U.S. Census Bureau's MA7/TIGER database (TAB20)
Map Created by Geography Division: April 14, 2021

U.S. DEPARTMENT OF COMMERCE U.S. Census Bureau

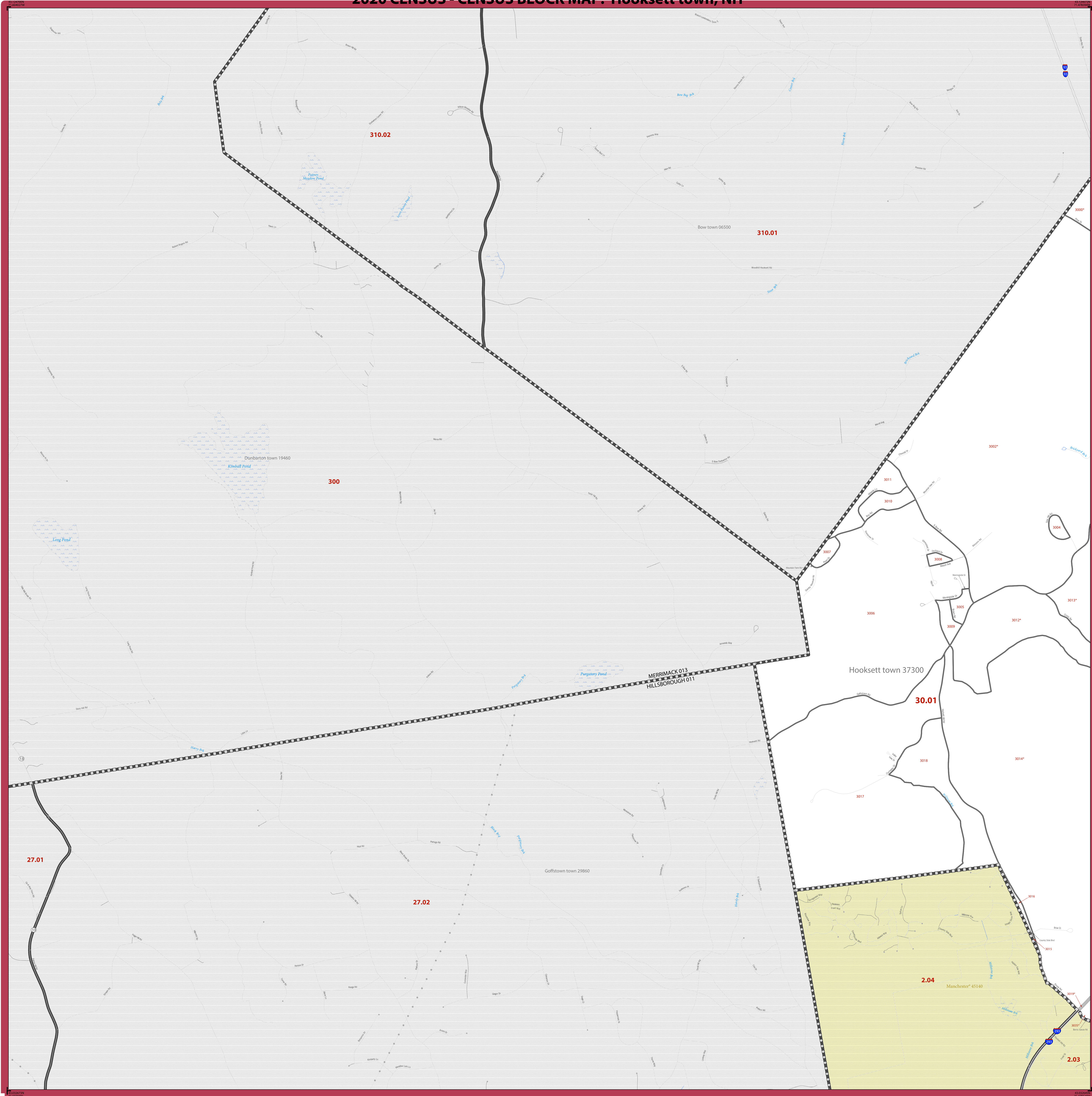


Total Sheets: 4 (Index 1; Parent 3; Inset 0)

NAME: Hooksett town (37300)
ENTITY TYPE: Minor Civil Division
ST: New Hampshire (33)
CO: Merrimack (013)

Geographic Unit (GU) Block Map Series
2020 CENSUS BLOCK MAP (INDEX) - Sheet ID: 2562330133730000

2020 CENSUS - CENSUS BLOCK MAP: Hooksett town, NH



LEGEND

SYMBOL DESCRIPTION	SYMBOL	LABEL STYLE
International or State Water Limit	☆☆☆☆☆	CANADA
Federal American Indian Reservation	*****	L'ANSE RESV N 1880
Off-Reservation Trust Land or Hawaiian Home Land	+++++	T1880
Oklahoma Tribal Statistical Area, Alaska Native Village Statistical Area, or Tribal Designated Statistical Area	◆◆◆◆◆	KAW OTSA 5690
American Indian Tribal Subdivision	●●●●●	EAGLE NEST DIST 200
State American Indian Reservation	//////	Tama Resv n 9400
State Designated Tribal Statistical Area	◆◆◆◆◆	Lumbee SDTSA 9815
Alaska Native Regional Corporation	▼▼▼▼▼	MANA ANRC 52120
State (or statistically equivalent entity)		NEW YORK 36
County (or statistically equivalent entity)	□□□□□	MONTGOMERY 031
Minor Civil Division (MCD) ¹	○○○○○	Bristol town 07485
Census County Division (CCD), Census Subarea (CSA), or Unorganized Territory (UT)	○○○○○	Hanna CCD 91650
Consolidated City	○○○○○	MILFORD 47500
Incorporated Place ^{1,2}	Color fill	Davis 18100
Census Designated Place (CDP) ²	Color fill	Incline Village 35100
Census Tract ³	Color fill	33.07
Census Block ⁴	Color fill	3012

DESCRIPTION	SYMBOL	DESCRIPTION	SYMBOL
Interstate	Blue line with shield	Geographic Offset or Corridor	Grey line
U.S. Highway	Black line with shield	Water Body	Blue area
State Highway	Black line with shield	Swamp, Marsh, Gravel Pit, or Quarry	Green area
Other Road	Black line	Glacier	Blue area
Cul-de-sac	Black line with T-junction	Military	Red area
Circle	Black line with circle	National or State Park, Forest, or Recreation Area	Green area
Over Trail, Stairway, Alley, Walkway, or Ferry	Black line with cross-ticks	College or University	Blue area
Railroad	Black line with cross-ticks	Prison or Juvenile Detention Center	Red area
Pipeline or Power Line	Black line with cross-ticks	Airport, Airfield, or Helicopter Landing Pad	Black area
Ridge or Fence	Black line with cross-ticks	Selected Mountain Peaks	Black triangle
Perennial Stream	Blue line	Island Name	DEER IS
Intermittent Stream	Blue line with dashes	Nonvisible Boundary or Feature Not Elsewhere Classified	Dotted line
Inset Area	Grey box with 'A'	Outside Subject Area	Light grey box

Where international, state, county, and/or MCD/CCD boundaries coincide, the map shows the boundary symbol for only the highest-ranking of these boundaries. Where American Indian reservation and American Indian tribal subdivision boundaries coincide, the map shows only the American Indian reservation boundaries. Where Oklahoma tribal statistical area boundaries and American Indian tribal subdivision boundaries coincide, the map shows only the Oklahoma tribal statistical area boundaries.

Geographic area names are followed by either their FIPS or census code.

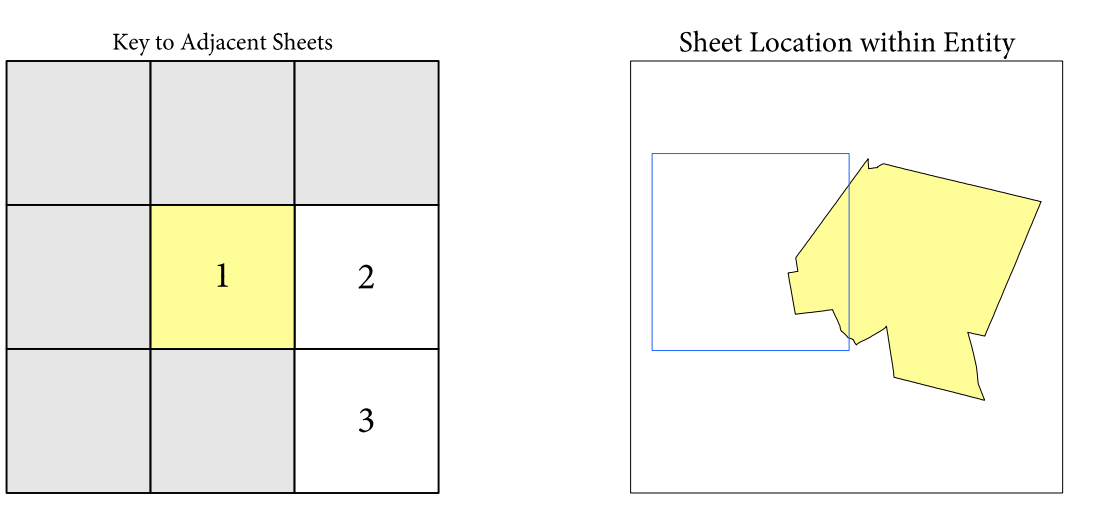
1 A "*" following an MCD name denotes a false MCD. A "*" following a place name indicates that a false MCD exists that is coterminous with the place and has the same name and FIPS code as the place; the false MCD label is not shown.

2 Place label color corresponds to the place fill color.

3 Census tracts are identified by an up to four-digit integer number and may have an optional two-digit suffix; for example 23 or 1457.02. The census tract codes consist of six digits with an implied decimal between the fourth and fifth digit corresponding to the basic census tract number, but with leading zeros, and trailing zeros for census tracts without a suffix. The tract number examples above would have codes of 002300 and 145702, respectively.

4 A "*" following a block number indicates that the block number is repeated elsewhere in the block.

Due to space limitations, some areas and features such as water bodies, colleges, prisons, and roads may not be labeled.

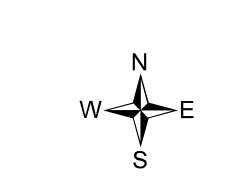
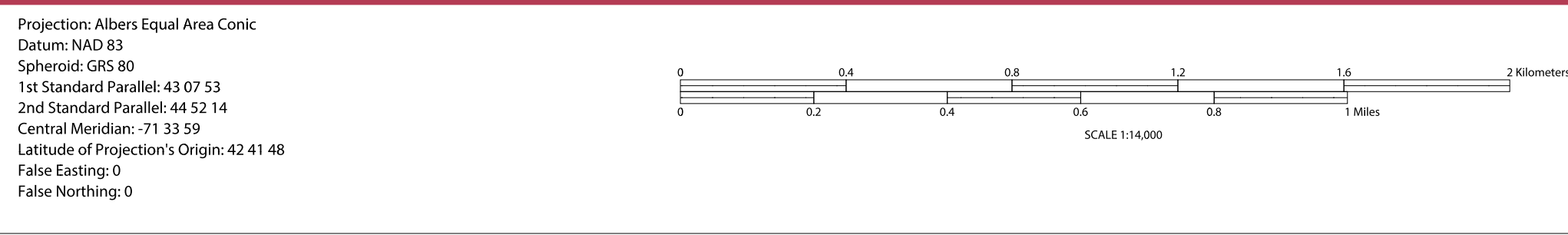


Sheet 1 of 3 PARENT sheets
Total Sheets: 4 (Index 1; Parent 3; Inset 0)

All legal boundaries and names are as of January 1, 2020. The boundaries shown on this map are for Census Bureau statistical data collection and tabulation purposes only; their depiction and designation for statistical purposes does not constitute a determination of jurisdictional authority or rights of ownership or entitlement.

Geographic: Vintage: 2020 Census (reference date: January 1, 2020)
Data Source: U.S. Census Bureau's MAINTENANCE database (TAB20)
Map Created by Geography Division: April 14, 2021

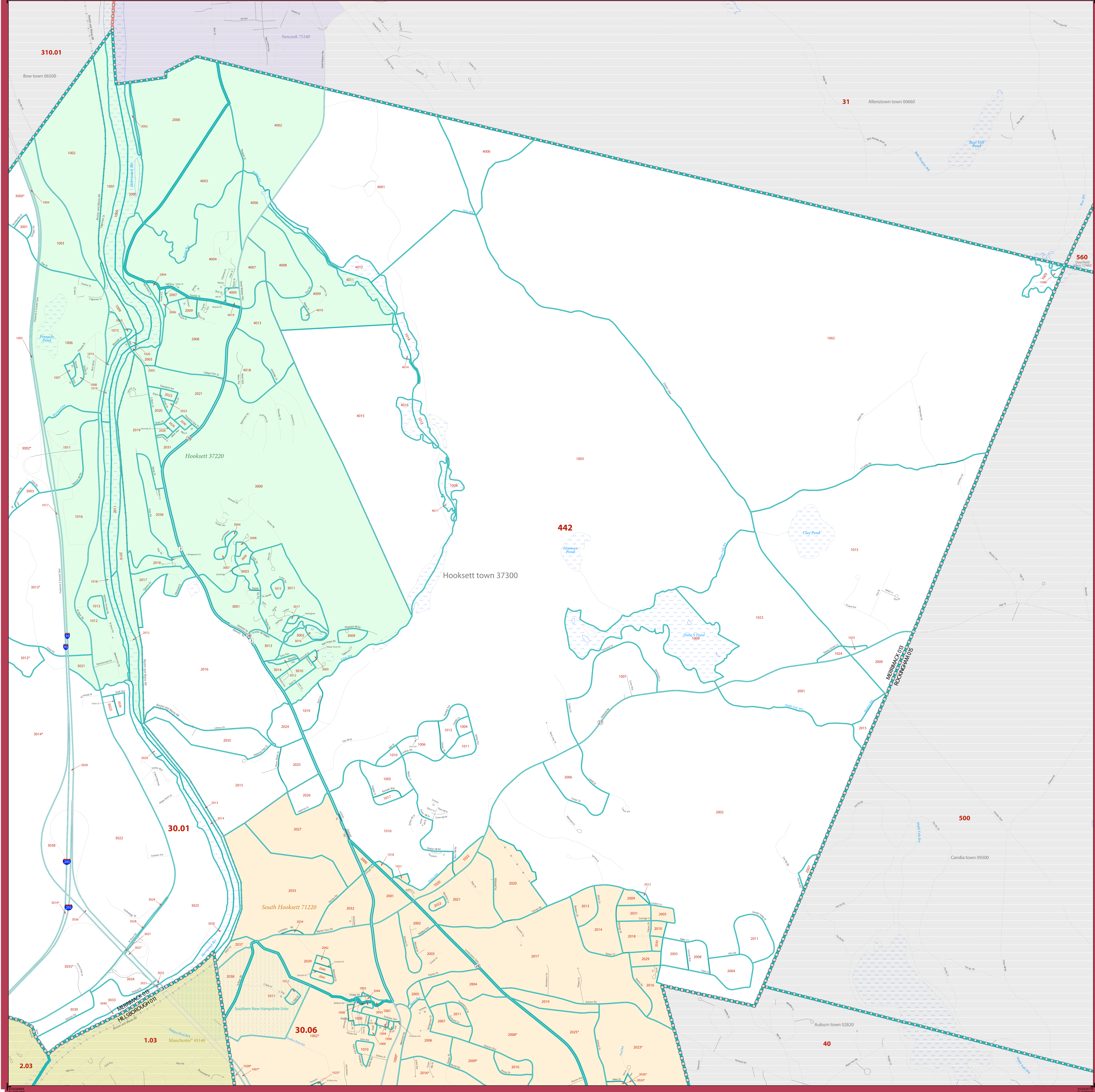
U.S. DEPARTMENT OF COMMERCE U.S. Census Bureau



NAME: Hooksett town (37300)
ENTITY TYPE: Minor Civil Division
ST: New Hampshire (33)
CO: Merrimack (013)

Geographic Unit (GU) Block Map Series
2020 CENSUS BLOCK MAP (PARENT) - Sheet ID: 2562301337300001

2020 CENSUS - CENSUS BLOCK MAP: Hooksett town, NH



LEGEND

SYMBOL DESCRIPTION	SYMBOL	LABEL STYLE
International or State Water Limit	☆☆☆☆☆	CANADA
Federal American Indian Reservation	*****	L'ANSE RESVN 1880
Off-Reservation Trust Land or Hawaiian Home Land	+++++	T1880
Oklahoma Tribal Statistical Area, Alaska Native Village Statistical Area, or Tribal Designated Statistical Area	◆◆◆◆◆	KAW OTSA 5690
American Indian Tribal Subdivision	●●●●●	EAGLE NEST DIST 200
State American Indian Reservation	//////	Tama Resvn 9400
State Designated Tribal Statistical Area	◆◆◆◆◆	Lumbee SDTSA 9815
Alaska Native Regional Corporation	▽▽▽▽▽	NANA ANRC 52120
State (or statistically equivalent entity)		NEW YORK 36
County (or statistically equivalent entity)	□□□□□	MONTGOMERY 031
Minor Civil Division (MCD) ¹	○ ○ ○ ○ ○	Bristol town 07485
Census County Division (CCD), Census Subarea (CSA), or Unorganized Territory (UT)	○ ○ ○ ○ ○	Hanna CCD 91650
Consolidated City	○ ○ ○ ○ ○	MILFORD 47500
Incorporated Place ^{1,2}	■ ■ ■ ■ ■	Davis 18100
Census Designated Place (CDP) ²	■ ■ ■ ■ ■	Incline Village 35100
Census Tract ³	■ ■ ■ ■ ■	33.07
Census Block ⁴	■ ■ ■ ■ ■	3012

DESCRIPTION	SYMBOL	DESCRIPTION	SYMBOL
Interstate	— — —	Geographic Offset or Corridor	— — —
U.S. Highway	— —	Water Body	■ ■ ■ ■ ■
State Highway	— —	Swamp, Marsh, Gravel Pit, or Quarry	■ ■ ■ ■ ■
Other Road	— —	Glacier	■ ■ ■ ■ ■
Cul-de-sac	— —	Military	■ ■ ■ ■ ■
Circle	○	National or State Park, Forest, or Recreation Area	■ ■ ■ ■ ■
4WD Trail, Steepway, Alley, Walkway, or Ferry	— —	Yosemite Natl PK	■ ■ ■ ■ ■
Railroad	— —	College or University	■ ■ ■ ■ ■
Pipeline or Power Line	— —	Prison or Juvenile Detention Center	■ ■ ■ ■ ■
Ridge or Fence	— —	Airport, Airfield, or Helicopter Landing Pad	■ ■ ■ ■ ■
Perennial Stream	— —	Selected Mountain Peaks	■ ■ ■ ■ ■
Intermittent Stream	— —	Island Name	DEER IS
Island Name	DEER IS	Nonvisible Boundary or Feature Not Elsewhere Classified	— —
Inset Area	A	Outside Subject Area	■ ■ ■ ■ ■

Where international, state, county, and/or MCD/CCD boundaries coincide, the map shows the boundary symbol for only the highest-ranking of these boundaries. Where American Indian reservation and American Indian tribal subdivision boundaries coincide, the map shows only the American Indian reservation boundaries. Where Oklahoma tribal statistical area boundaries and American Indian tribal subdivision boundaries coincide, the map shows only the Oklahoma tribal statistical area boundaries.

Geographic area names are followed by either their FIPS or census code.

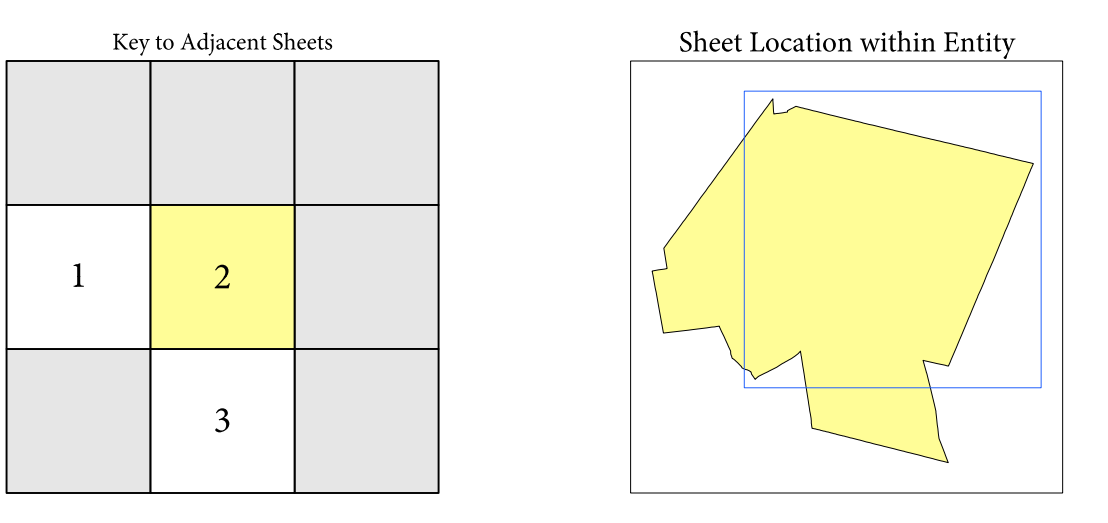
1 A "*" following an MCD name denotes a false MCD. A "*" following a place name indicates that a false MCD exists that is coterminous with the place and has the same name and FIPS code as the place; the false MCD label is not shown.

2 Place label color corresponds to the place fill color.

3 Census tracts are identified by an up to four-digit integer number and may have an optional two-digit suffix; for example 23 or 1457.02. The census tract codes consist of six digits with an implied decimal between the fourth and fifth digit corresponding to the basic census tract number, but with leading zeros, and trailing zeros for census tracts without a suffix. The tract number examples above would have codes of 002300 and 145702, respectively.

4 A "*" following a block number indicates that the block number is repeated elsewhere in the block.

Due to space limitations, some areas and features such as water bodies, colleges, prisons, and roads may not be labeled.

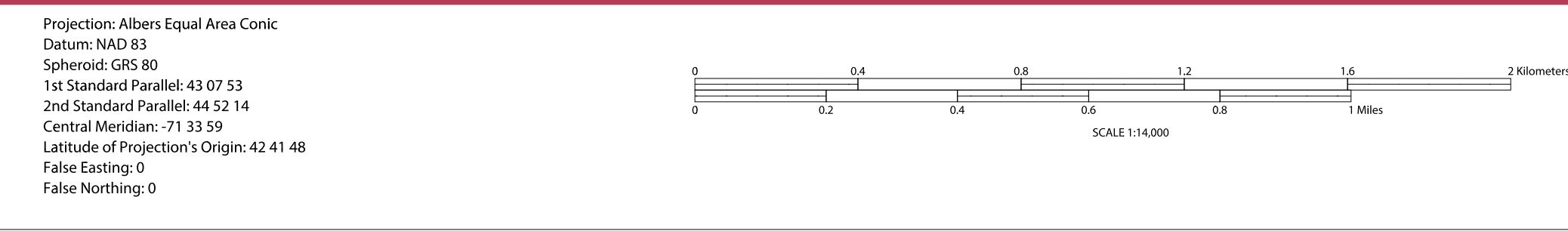


Sheet 2 of 3 PARENT sheets
Total Sheets: 4 (Index 1; Parent 3; Inset 0)

All legal boundaries and names are as of January 1, 2020. The boundaries shown on this map are for Census Bureau statistical data collection and tabulation purposes only; their depiction and designation for statistical purposes does not constitute a determination of jurisdictional authority or rights of ownership or entitlement.

Geographic: Vintage: 2020 Census (reference date: January 1, 2020)
Data Source: U.S. Census Bureau's MAINTIGR database (TIGER20)
Map Created by Geography Division: April 14, 2021

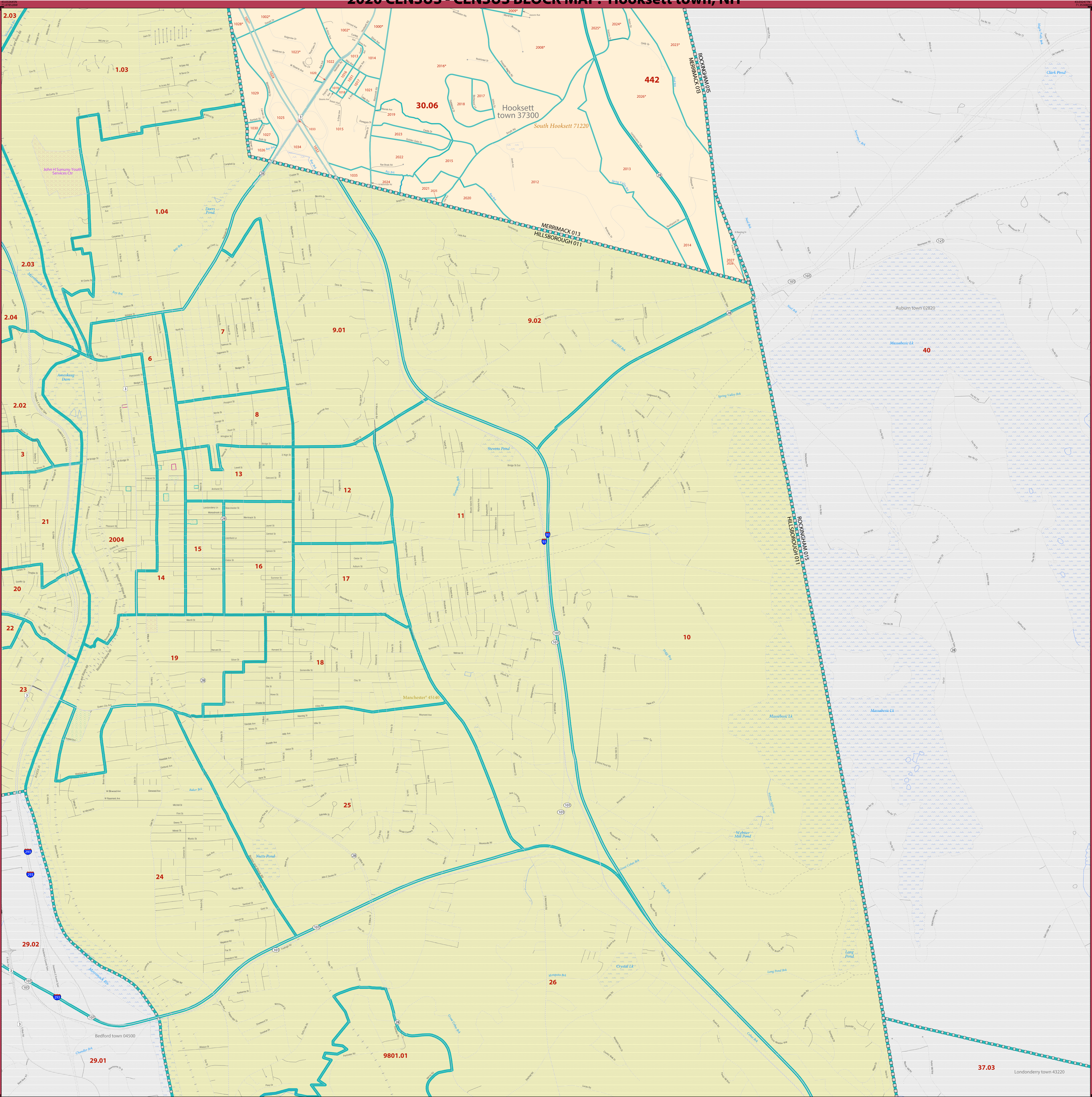
U.S. DEPARTMENT OF COMMERCE U.S. Census Bureau



NAME: Hooksett town (37300)
ENTITY TYPE: Minor Civil Division
ST: New Hampshire (33)
CO: Merrimack (013)

Geographic Unit (GU) Block Map Series
2020 CENSUS BLOCK MAP (PARENT) - Sheet ID: 2562301337300002

2020 CENSUS - CENSUS BLOCK MAP: Hooksett town, NH



LEGEND

SYMBOL DESCRIPTION	SYMBOL	LABEL STYLE
International or State Water Limit	☆☆☆☆☆	CANADA
Federal American Indian Reservation	*****	L'ANSE RESVN 1880
Off-Reservation Trust Land or Hawaiian Home Land	+ + + + +	T1880
Oklahoma Tribal Statistical Area, Alaska Native Village Statistical Area, or Tribal Designated Statistical Area	◆◆◆◆◆	KAW OTSA 5690
American Indian Tribal Subdivision	●●●●●	EAGLE NEST DIST 200
State American Indian Reservation	///////	Tama Resvn 9400
State Designated Tribal Statistical Area	◆◆◆◆◆	Lumbee SDTSA 9815
Alaska Native Regional Corporation	▼▼▼▼▼	NANA ANRC 52120
State (or statistically equivalent entity)		NEW YORK 36
County (or statistically equivalent entity)	□□□□□	MONTGOMERY 031
Minor Civil Division (MCD) ¹	○○○○○	Bristol town 07485
Census County Division (CCD), Census Subdiv (CSA), or Unincorporated Territory (UT)	○○○○○	Hanna CCD 91650
Consolidated City	○○○○○	MILFORD 47500
Incorporated Place ²		Davis 18100
Census Designated Place (CDP) ²		Incline Village 35100
Census Tract ³	—	33.07
Census Block ⁴	—	3012

DESCRIPTION	SYMBOL	DESCRIPTION	SYMBOL
Interstate		Geographic Offset or Corridor	
U.S. Highway		Water Body	
State Highway		Swamp, Marsh, Gravel Pit, or Quarry	
Other Road		Glacier	
Cul-de-sac		Military	
Circle		National or State Park, Forest, or Recreation Area	
Road-Trail, Station, Alley, Walkway, or Ferry		Yosemite Natl PK	
Railroad		College or University	
Pipeline or Power Line		Prison or Juvenile Detention Center	
Perennial Stream		Airport, Airfield, or Helicopter Landing Pad	
Intermittent Stream		Selected Mountain Peaks	
Island Name			
Nonvisible Boundary or Feature Not Elsewhere Classified			
Inset Area		Outside Subject Area	

Where international, state, county, and/or MCD/CCD boundaries coincide, the map shows the boundary symbol for only the highest-ranking of these boundaries. Where American Indian reservation and American Indian tribal subdivision boundaries coincide, the map shows only the American Indian reservation boundaries. Where Oklahoma tribal statistical area boundaries and American Indian tribal subdivision boundaries coincide, the map shows only the Oklahoma tribal statistical area boundaries.

Geographic area names are followed by either their FIPS or census code.

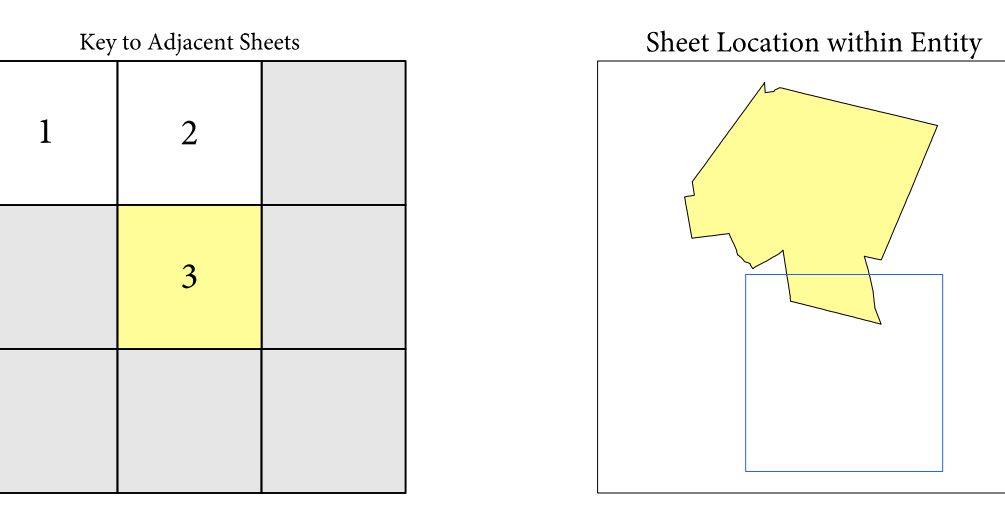
1 A " " following an MCD name denotes a false MCD. A " " following a place name indicates that a false MCD exists that is coextensive with the place and has the same name and FIPS code as the place; the false MCD label is not shown.

2 Place label color corresponds to the place fill color.

3 Census tracts are identified by an up to four-digit integer number and may have an optional two-digit suffix; for example 23 or 1457.02. The census tract codes consist of six digits with an implied decimal between the fourth and fifth digit corresponding to the basic census tract number, but with leading zeros, and trailing zeros for census tracts without a suffix. The tract number examples above would have codes of 002300 and 145702, respectively.

4 A " " following a block number indicates that the block number is repeated elsewhere in the block.

Due to space limitations, some areas and features such as water bodies, colleges, prisons, and roads may not be labeled.

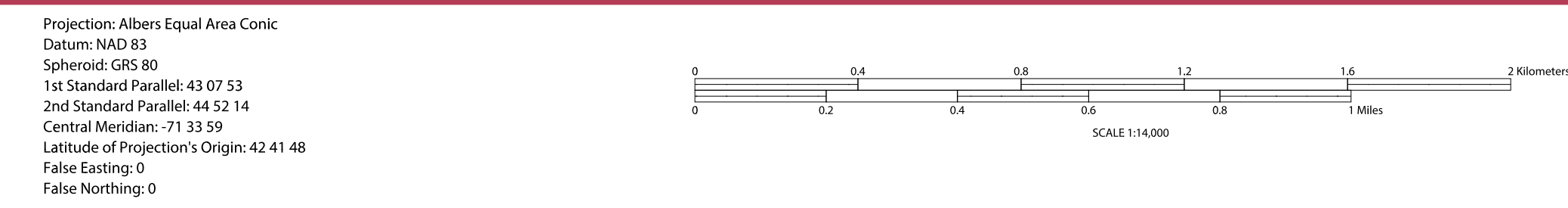


Sheet 3 of 3 PARENT sheets
Total Sheets: 4 (Index 1; Parent 3; Inset 0)

All legal boundaries and names are as of January 1, 2020. The boundaries shown on this map are for Census Bureau statistical data collection and tabulation purposes only; their depiction and designation for statistical purposes does not constitute a determination of jurisdictional authority or rights of ownership or entitlement.

Geographic: Vintage: 2020 Census (reference date: January 1, 2020)
Data Source: U.S. Census Bureau's MAI/TRACTS database (TAB20)
Map Created by Geography Division: April 14, 2021

U.S. DEPARTMENT OF COMMERCE U.S. Census Bureau



NAME: Hooksett town (37300)
ENTITY TYPE: Minor Civil Division
ST: New Hampshire (33)
CO: Merrimack (013)

Geographic Unit (GU) Block Map Series
2020 CENSUS BLOCK MAP (PARENT) - Sheet ID: 2562330133730003