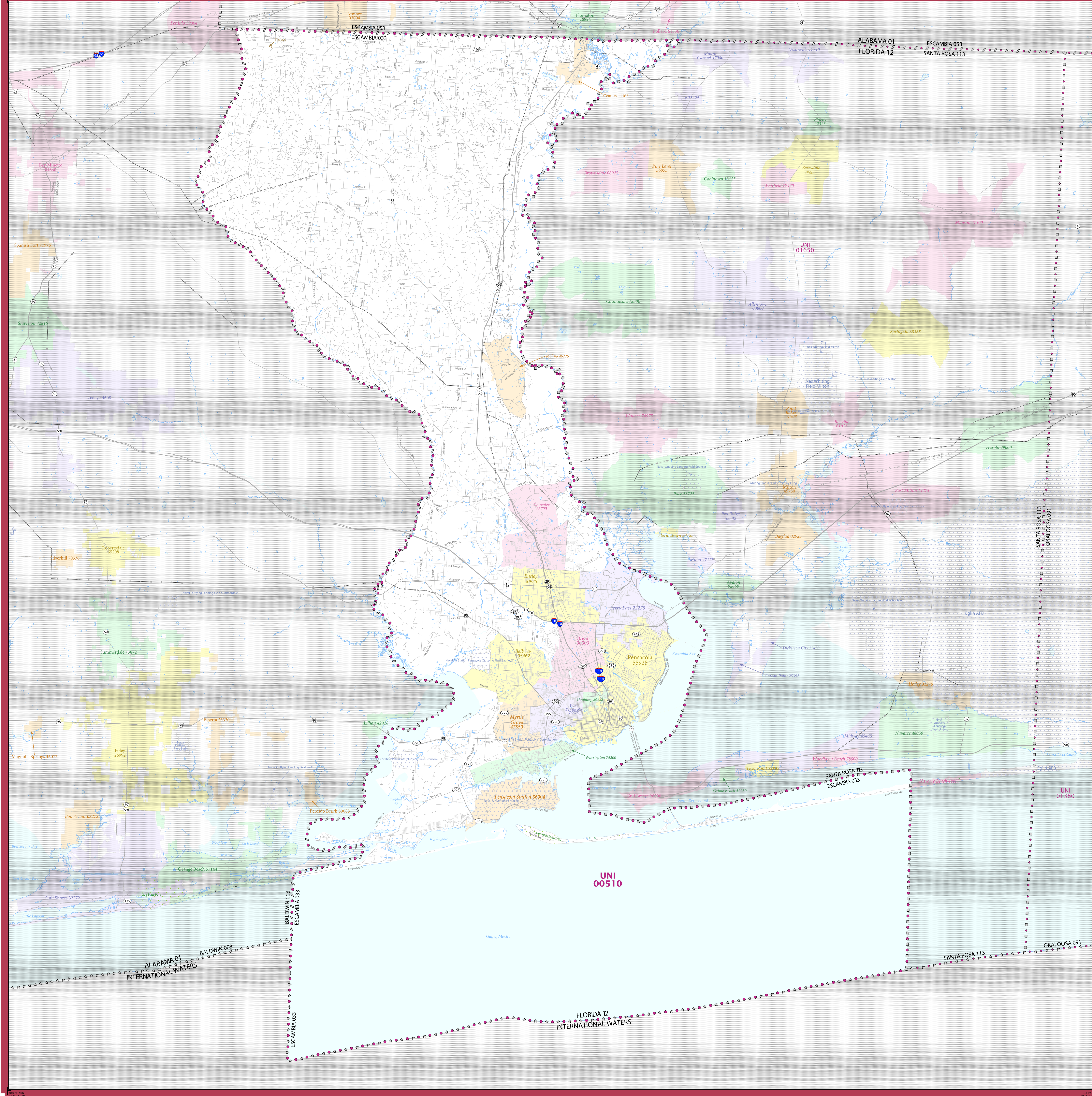


2020 CENSUS - SCHOOL DISTRICT REFERENCE MAP: Escambia County, FL



SYMBOL DESCRIPTION		LEGEND	
SYMBOL DESCRIPTION	SYMBOL	SYMBOL	LABEL STYLE
International	☆☆☆☆☆	☆☆☆☆☆	CANADA
Federal American Indian Reservation	[Dotted Pattern]	[Dotted Pattern]	L'ANSE RES 1880
Off-Reservation Trust Land	[Dotted Pattern]	[Dotted Pattern]	T1880
State American Indian Reservation	[Dotted Pattern]	[Dotted Pattern]	Tama Res 9400
Alaska Native Regional Corporation	+++++	+++++	NANA ANRC 52120
State (or statistically equivalent entity)			NEW YORK 36
County (or statistically equivalent entity)	□□□□□	□□□□□	ERIE 029
Minor Civil Division (MCD) ^{1,2}	○○○○○	○○○○○	Bristol town 07485
Consolidated City	○●○○○	○●○○○	MILFORD 47500
Incorporated Place ^{3,4}	[Color Swatches]	[Color Swatches]	Davis 18100
Census Designated Place (CDP) ⁵	[Color Swatches]	[Color Swatches]	Incline Village 35100
Unified School District ⁴	[Color Swatches]	[Color Swatches]	UNI 03370 SEC 99965 ELM 02220
Secondary School District ⁴	[Color Swatches]	[Color Swatches]	
Elementary School District ⁴	[Color Swatches]	[Color Swatches]	

DESCRIPTION	SYMBOL	DESCRIPTION	SYMBOL
Interstate	[Thick Blue Line]	Water Body	[Blue Area]
U.S. Highway	[Thick Grey Line]	Military	[Blue Area]
State Highway or State Road	[Thin Grey Line]	National or State Park, Forest, or Recreation Area	[Green Area]
Other Road	[Thin Grey Line]	Yosemite NP	[Green Area]
Railroad	[Black Line with Cross-ticks]	Inset Area	[Green Area]
Pipeline or Power Line	[Thin Grey Line]	Outside Subject Area	[Grey Area]
Ridge or Fence	[Dashed Line]		
Non-labeled Boundary or Feature Not Elsewhere Classified	[Thin Grey Line]		

Where international, state, county, and/or MCD boundaries coincide, the map shows the boundary symbol for only the highest-ranking of these boundaries.

Geographic area names are followed by either their FIPS or census code.

1 MCD boundaries are shown in the following states in which some or all MCDs function as general-purpose governmental units: Connecticut, Illinois, Indiana, Kansas, Maine, Massachusetts, Michigan, Minnesota, Missouri, Nebraska, New Hampshire, New Jersey, New York, North Dakota, Ohio, Pennsylvania, Rhode Island, South Dakota, Vermont, and Wisconsin. (Note that Illinois and Nebraska have some counties covered by nongovernmental precincts and Missouri has most counties covered by nongovernmental townships.)

2 A " " following an MCD name denotes a false MCD. A " " following a place name indicates that a false MCD exists with the same name and FIPS code as the place; the false MCD label is not shown.

3 Place label color corresponds to the place fill color.

4 A " " following a label indicates that the school district is in more than one county.

Due to space limitations, some areas and features such as water bodies, parks, and roads may not be labeled.

OFF-RESERVATION TRUST LAND NAMES

12865 - Fourth Creek

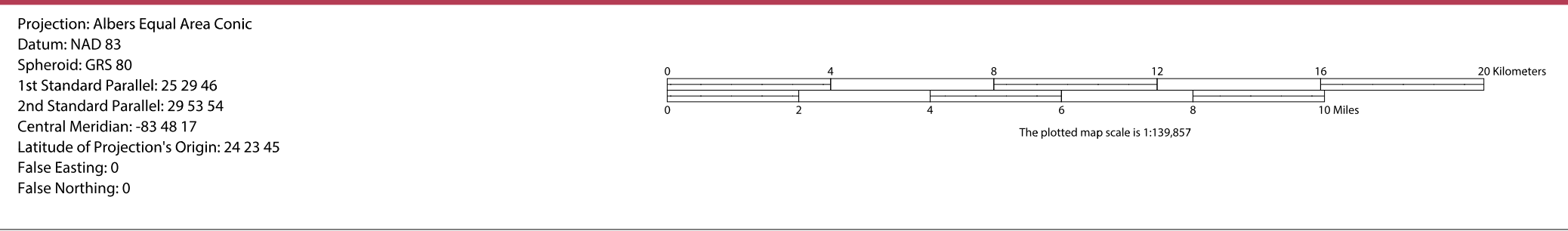
SUBJECT AREA SCHOOL DISTRICTS ON MAP SHEET

TYPE	CODE	NAME
UNI	00510	Escambia County School District

All legal boundaries and names are as of January 1, 2020. The boundaries shown on this map are for Census Bureau statistical data collection and tabulation purposes only; their depiction and designation for statistical purposes does not constitute a determination of jurisdictional authority or rights of ownership or entitlement.

Geographic Vintage: 2020 Census (reference date: January 1, 2020)
 Data Source: U.S. Census Bureau's MA7/TIGER database (TIGER20)
 Map Created by Geography Division: December 23, 2020

U.S. DEPARTMENT OF COMMERCE U.S. Census Bureau



Sheet 1 of 1 PARENT sheets
 Total Sheets: 1 (Index 0; Parent 1; Inset 0)

NAME: Escambia County (033)
 ENTITY TYPE: County or statistically equivalent entity
 ST: Florida (12)

2020 CENSUS SD REF MAP (PARENT)
 Sheet ID: 25151003001