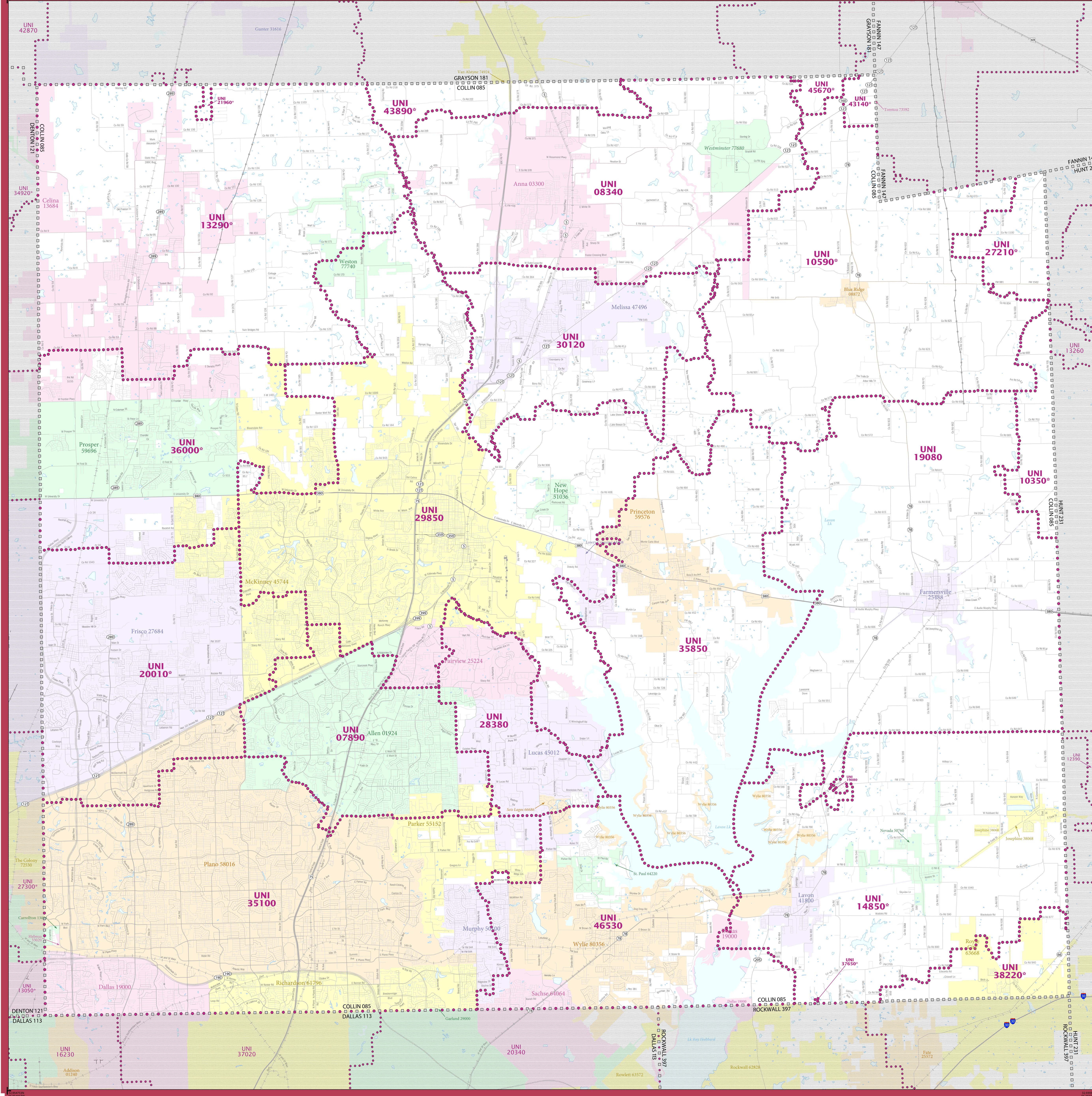


2020 CENSUS - SCHOOL DISTRICT REFERENCE MAP: Collin County, TX



LEGEND

SYMBOL DESCRIPTION	SYMBOL	LABEL STYLE
International	☆☆☆☆☆	CANADA
Federal American Indian Reservation	■ ■ ■ ■ ■	L'ANSE RES 1880
Off-Reservation Trust Land	■ ■ ■ ■ ■	T1880
State American Indian Reservation	■ ■ ■ ■ ■	Tama Res 9400
Alaska Native Regional Corporation	+++++	NANA ANRC 52120
State (or statistically equivalent entity)		NEW YORK 36
County (or statistically equivalent entity)	□ □ □ □ □	ERIE 029
Minor Civil Division (MCD) 1,2	○ ○ ○ ○ ○	Bristol town 07485
Consolidated City	○ ○ ○ ○ ○	MILFORD 47500
Incorporated Place 3,3	■ ■ ■ ■ ■	Davis 18100
Census Designated Place (CDP) 3	■ ■ ■ ■ ■	Incline Village 35100
Unified School District 4	● ● ● ● ●	UNI 0370
Secondary School District 4	■ ■ ■ ■ ■	SEC 99965
Elementary School District 4	■ ■ ■ ■ ■	ELM 02220

DESCRIPTION	SYMBOL	DESCRIPTION	SYMBOL
Interstate	—	Water Body	■ ■ ■ ■ ■
U.S. Highway	—	Military	■ ■ ■ ■ ■
State Highway or State Road	—	National or State Park, Forest, or Recreation Area	■ ■ ■ ■ ■
Other Road	—	Yosemite NP	■ ■ ■ ■ ■
Other Road	—	Inset Area	■ ■ ■ ■ ■
4WD Trail, Steamer, Alley, Walkway, or Ferry	—	Outside Subject Area	■ ■ ■ ■ ■
Railroad	—		
Pipeline or Power Line	—		
Ridge or Fence	—		
Notable Boundary or Feature Not Elsewhere Classified	—		

Where international, state, county, and/or MCD boundaries coincide, the map shows the boundary symbol for only the highest-ranking of these boundaries.

Geographic area names are followed by either their FIPS or census code.

1 MCD boundaries are shown in the following states in which some or all MCDs function as general-purpose governmental units: Connecticut, Illinois, Indiana, Kansas, Maine, Massachusetts, Michigan, Minnesota, Missouri, Nebraska, New Hampshire, New Jersey, New York, North Dakota, Ohio, Pennsylvania, Rhode Island, South Dakota, Vermont, and Wisconsin. (Note that Illinois and Nebraska have some counties covered by nongovernmental precincts and Missouri has most counties covered by nongovernmental townships.)

2 A " " following an MCD name denotes a false MCD. A " " following a place name indicates that a false MCD exists with the same name and FIPS code as the place; the false MCD label is not shown.

3 Place label color corresponds to the place fill color.

4 A " " following a label indicates that the school district is in more than one county.

Due to space limitations, some areas and features such as water bodies, parks, and roads may not be labeled.

SUBJECT AREA SCHOOL DISTRICTS ON MAP SHEET

TYPE	CODE	NAME
UNI	0790	Allen Independent School District
UNI	08340	Anna Independent School District
UNI	10150	Blair Independent School District
UNI	10590	Blue Ridge Independent School District
UNI	13290	Celina Independent School District
UNI	14850	Community Independent School District
UNI	19080	Farmersville Independent School District
UNI	20010	Frisco Independent School District
UNI	21960	Gunter Independent School District
UNI	27210	Leonard Independent School District
UNI	28380	Lowrey Independent School District
UNI	29850	McKinney Independent School District
UNI	30120	Melissa Independent School District
UNI	31300	Piano Independent School District
UNI	33650	Precinct Independent School District
UNI	36000	Prosper Independent School District
UNI	37650	Rockwall Independent School District
UNI	38220	Royce City Independent School District
UNI	41740	Trenton Independent School District
UNI	43890	Van Alstyne Independent School District
UNI	45670	Whitehouse Independent School District
UNI	46390	Wylie Independent School District

All legal boundaries and names are as of January 1, 2020. The boundaries shown on this map are for Census Bureau statistical data collection and tabulation purposes only; their depiction and designation for statistical purposes does not constitute a determination of jurisdictional authority or rights of ownership or entitlement.

Geographic Vintage: 2020 Census (reference date: January 1, 2020)
 Data Source: U.S. Census Bureau's MAINTIGR database (TAB20)
 Map Created by Geography Division: December 22, 2020

U.S. DEPARTMENT OF COMMERCE U.S. Census Bureau

Projection: Albers Equal Area Conic
 Datum: NAD 83
 Spheroid: GRS 80
 1st Standard Parallel: 27 36 51
 2nd Standard Parallel: 34 43 24
 Central Meridian: -100 04 35
 Latitude of Projection's Origin: 25 50 13
 False Easting: 0
 False Northing: 0

The plotted map scale is 1:74,351

Scale: 0 to 10 kilometers / 0 to 10 miles

United States
Census 2020

Sheet 1 of 1 PARENT sheets
 Total Sheets: 1 (Index 0; Parent 1; Inset 0)

NAME: Collin County (085)
 ENTITY TYPE: County or statistically equivalent entity
 ST: Texas (48)

2020 CENSUS SD REF MAP (PARENT)
 Sheet ID: 2515480001