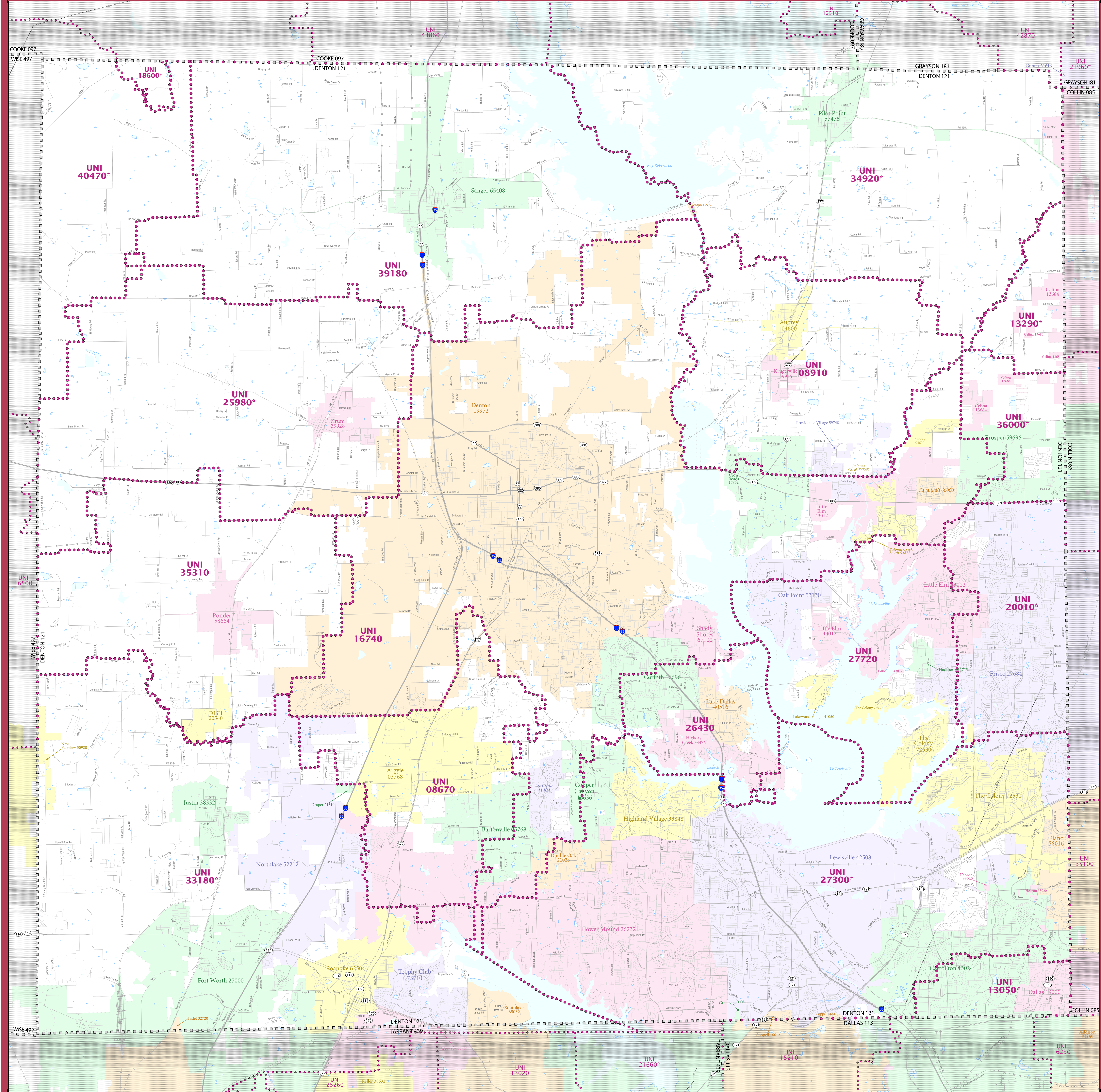


# 2020 CENSUS - SCHOOL DISTRICT REFERENCE MAP: Denton County, TX



### LEGEND

SYMBOL DESCRIPTION	SYMBOL	LABEL STYLE
International	☆☆☆☆☆	CANADA
Federal American Indian Reservation	[Dotted Pattern]	L'ANSE RES 1880
Off-Reservation Trust Land	[Dotted Pattern]	T1880
State American Indian Reservation	[Dotted Pattern]	Tama Res 9400
Alaska Native Regional Corporation	+++++	NANA ANRC 52120
State (or statistically equivalent entity)	[Dotted Pattern]	NEW YORK 36
County (or statistically equivalent entity)	[Dotted Pattern]	ERIE 029
Minor Civil Division (MCD) <sup>1,2</sup>	○○○○○	Bristol town 07485
Consolidated City	○ ○ ○ ○ ○	MILFORD 47500
Incorporated Place <sup>3,4</sup>	[Color Swatches]	Davis 18100
Census Designated Place (CDP) <sup>5</sup>	[Color Swatches]	Incline Village 35100
Unified School District <sup>4</sup>	[Thick Dotted Line]	UNI 03370
Secondary School District <sup>4</sup>	[Thick Solid Line]	SEC 99965
Elementary School District <sup>4</sup>	[Thin Solid Line]	ELM 02220

DESCRIPTION	SYMBOL	DESCRIPTION	SYMBOL
Interstate	[Blue Line]	Water Body	[Blue Area]
U.S. Highway	[Yellow Line]	Military	[Blue Line]
State Highway or State Road	[Orange Line]	National or State Park, Forest, or Recreation Area	[Green Area]
Other Road	[Grey Line]	Yosemite NP	[Green Area]
RTD Trail, Stairway, Alley, Walkway, or Ferry	[Thin Grey Line]	Inset Area	[Green Area]
Railroad	[Black Line]	Outside Subject Area	[Grey Area]
Pipeline or Power Line	[Thin Black Line]		
Ridge or Fence	[Dashed Line]		
Navigable Boundary or Feature Not Elsewhere Classified	[Thin Dotted Line]		

Where international, state, county, and/or MCD boundaries coincide, the map shows the boundary symbol for only the highest-ranking of these boundaries.

Geographic area names are followed by either their FIPS or census code.

- MCD boundaries are shown in the following states in which some or all MCDs function as general-purpose governmental units: Connecticut, Illinois, Indiana, Kansas, Maine, Massachusetts, Michigan, Minnesota, Missouri, Nebraska, New Hampshire, New Jersey, New York, North Dakota, Ohio, Pennsylvania, Rhode Island, South Dakota, Vermont, and Wisconsin. (Note that Illinois and Nebraska have some counties covered by nongovernmental precincts and Missouri has most counties covered by nongovernmental townships.)
- A " " following an MCD name denotes a false MCD. A " " following a place name indicates that a false MCD exists with the same name and FIPS code as the place; the false MCD label is not shown.
- Place label color corresponds to the place fill color.
- A " " following a label indicates that the school district is in more than one county.

Due to space limitations, some areas and features such as water bodies, parks, and roads may not be labeled.

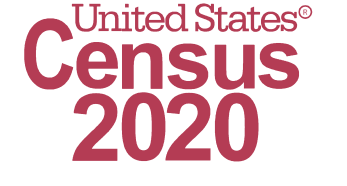
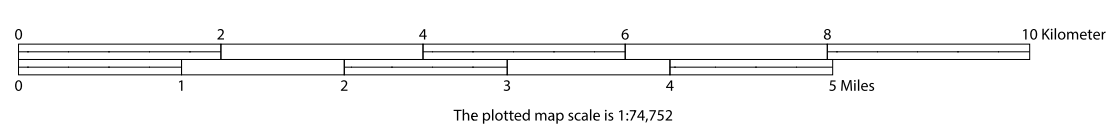
#### SUBJECT AREA SCHOOL DISTRICTS ON MAP SHEET

TYPE	CODE	NAME
UNI	08670	Argyle Independent School District
UNI	08910	Aubrey Independent School District
UNI	13290	Carrollton Farmers Branch Independent School District
UNI	13290	Celina Independent School District
UNI	16740	Denton Independent School District
UNI	18600	Eva Independent School District
UNI	20010	Frisco Independent School District
UNI	25980	Krum Independent School District
UNI	26430	Lake Dallas Independent School District
UNI	27300	Levellie Independent School District
UNI	27720	Little Elm Independent School District
UNI	33180	Northwest Independent School District
UNI	34920	Pilot Point Independent School District
UNI	35310	Ponder Independent School District
UNI	36000	Prosper Independent School District
UNI	39180	Sanger Independent School District
UNI	40470	Stallard Independent School District

All legal boundaries and names are as of January 1, 2020. The boundaries shown on this map are for Census Bureau statistical data collection and tabulation purposes only; their depiction and designation for statistical purposes does not constitute a determination of jurisdictional authority or rights of ownership or entitlement.

Geographic Vintage: 2020 Census (reference date: January 1, 2020)  
 Data Source: U.S. Census Bureau's MA7/TIGER database (TIGER20)  
 Map Created by Geography Division: December 22, 2020

Projection: Albers Equal Area Conic  
 Datum: NAD 83  
 Spheroid: GRS 80  
 1st Standard Parallel: 27 36 51  
 2nd Standard Parallel: 34 43 24  
 Central Meridian: -100 04 35  
 Latitude of Projection's Origin: 25 50 13  
 False Easting: 0  
 False Northing: 0



Sheet 1 of 1 PARENT sheets  
 Total Sheets: 1 (Index 0; Parent 1; Inset 0)

NAME: Denton County (121)  
 ENTITY TYPE: County or statistically equivalent entity  
 ST: Texas (48)

2020 CENSUS 50 REF MAP (PARENT)  
 Sheet ID: 251548121001