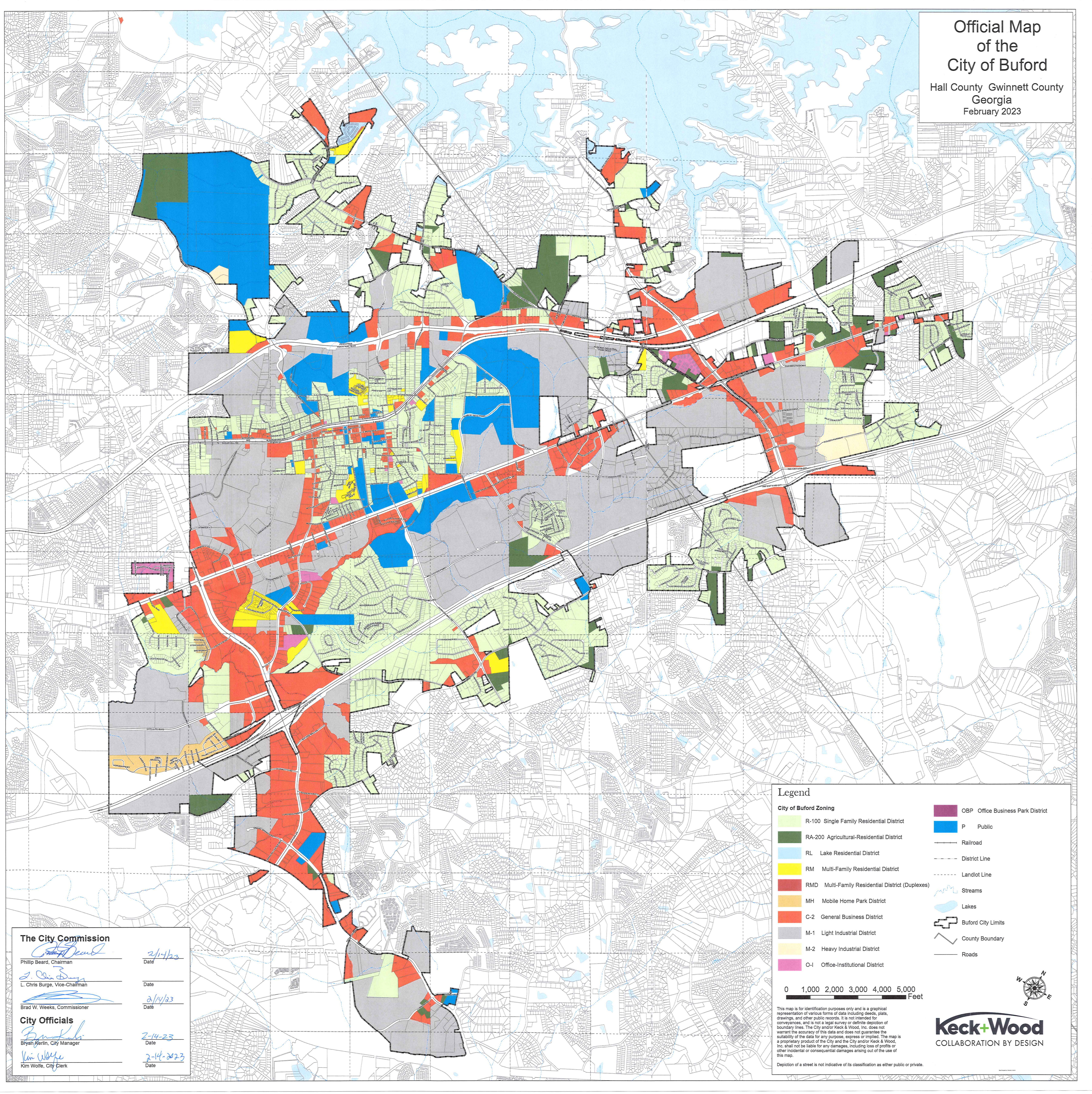


Official Map of the City of Buford

Hall County Gwinnett County
Georgia
February 2023

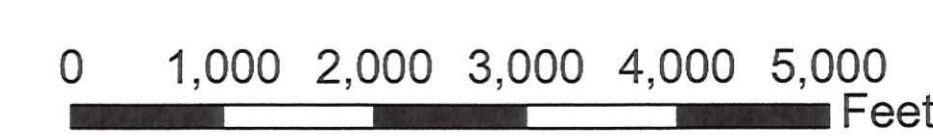


Legend

City of Buford Zoning

- R-100 Single Family Residential District
- RA-200 Agricultural-Residential District
- RL Lake Residential District
- RM Multi-Family Residential District
- RMD Multi-Family Residential District (Duplexes)
- MH Mobile Home Park District
- C-2 General Business District
- M-1 Light Industrial District
- M-2 Heavy Industrial District
- O-1 Office-Institutional District
- OBP Office Business Park District
- P Public

- Railroad
- District Line
- Landlot Line
- Streams
- Lakes
- Buford City Limits
- County Boundary
- Roads



This map is for identification purposes only and is a graphical representation of various forms of data including deeds, plats, drawings, and other public records. It is not intended for conveyances, and is not a legal survey or definite depiction of boundary lines. The City and/or Keck & Wood, Inc. does not warrant the accuracy of this data and does not guarantee the suitability of the data for any purpose, express or implied. The map is a proprietary product of the City and the City and/or Keck & Wood, Inc. shall not be liable for any damages, including loss of profits or other incidental or consequential damages arising out of the use of this map.

Depiction of a street is not indicative of its classification as either public or private.

keck+wood
COLLABORATION BY DESIGN

The City Commission

Phillip Beard, Chairman
Date: 2/14/23

L. Chris Burge, Vice-Chairman
Date: 2/14/23

Brad W. Weeks, Commissioner
Date: 2/14/23

City Officials

Bryan Kerlin, City Manager
Date: 2-14-23

Kim Wolfe, City Clerk
Date: 2-14-23