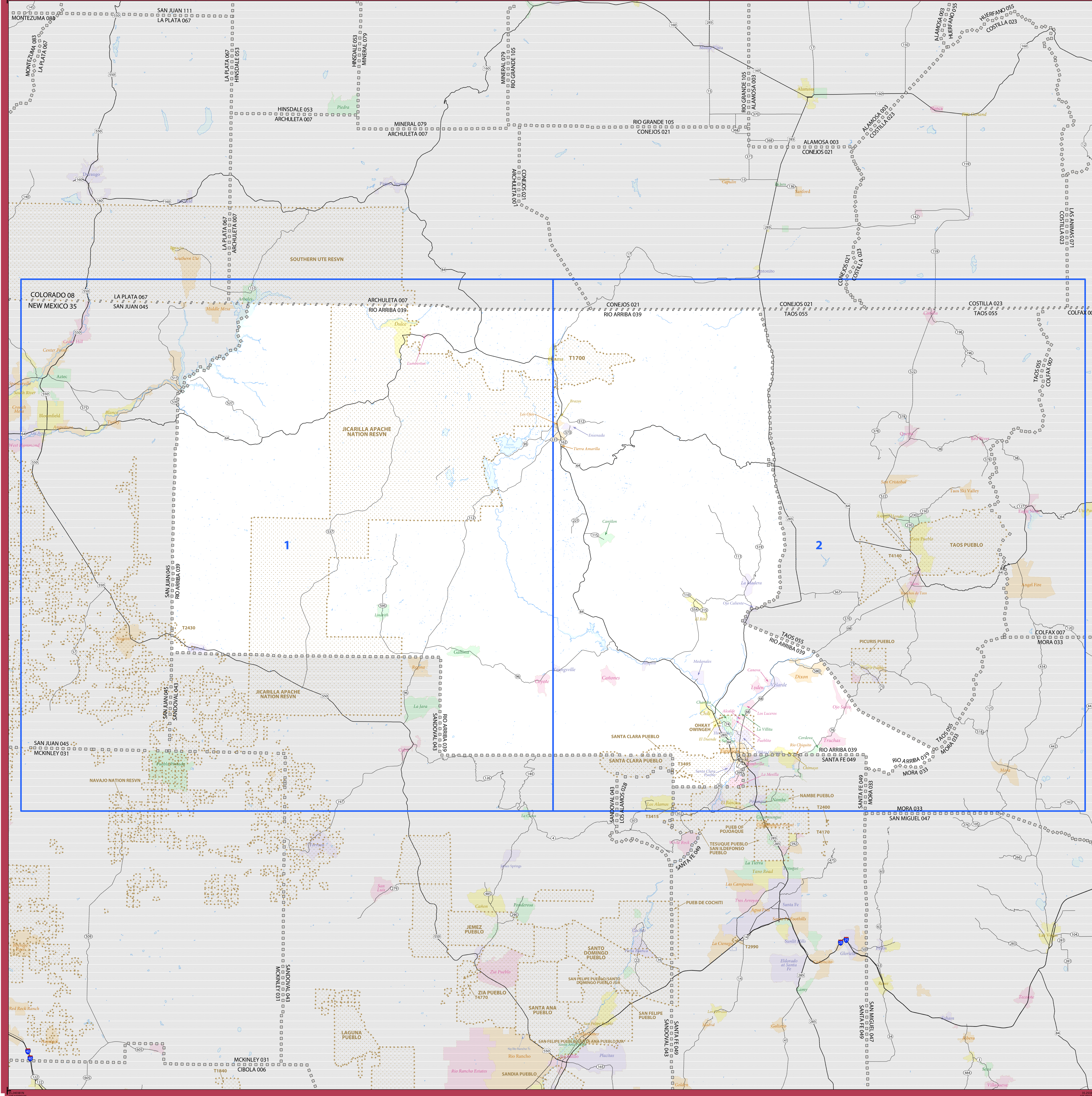


2020 CENSUS - SCHOOL DISTRICT REFERENCE MAP: Rio Arriba County, NM



SYMBOL DESCRIPTION	SYMBOL	SYMBOL	SYMBOL	DESCRIPTION	SYMBOL
International	☆☆☆☆	☆☆☆☆	☆☆☆☆	Water Body	Pleasant Lake
Federal American Indian Reservation	Military	Port Belvoir
Off-Reservation Trust Land	National or State Park, Forest, or Recreation Area	Yosemite NP
State American Indian Reservation	Inset Area	A1
Alaska Native Regional Corporation	+++++	+++++	+++++	Outside Subject Area	
State (or statistically equivalent entity)					
County (or statistically equivalent entity)	□□□□	□□□□	□□□□		
Minor Civil Division (MCD) ^{1,2}	○○○○	○○○○	○○○○		
Consolidated City	○○○○○	○○○○○	○○○○○		
Incorporated Place ^{3,4}	■■■■■	■■■■■	■■■■■		
Census Designated Place (CDP) ⁵	■■■■■	■■■■■	■■■■■		
Unified School District ⁴		
Secondary School District ⁴		
Elementary School District ⁴		

Where international, state, county, and/or MCD boundaries coincide, the map shows the boundary symbol for only the highest-ranking of these boundaries.
 Geographic area names are followed by either their FIPS or census code.

1 MCD boundaries are shown in the following states in which some or all MCDs function as general-purpose governmental units: Connecticut, Illinois, Indiana, Kansas, Maine, Massachusetts, Michigan, Minnesota, Missouri, Nebraska, New Hampshire, New Jersey, New York, North Dakota, Ohio, Pennsylvania, Rhode Island, South Dakota, Vermont, and Wisconsin. (Note that Illinois and Nebraska have some counties covered by nongovernmental precincts and Missouri has most counties covered by nongovernmental townships.)

2 A " " following an MCD name denotes a false MCD. A " " following a place name indicates that a false MCD exists with the same name and FIPS code as the place; the false MCD label is not shown.

3 Place label color corresponds to the place fill color.

4 A " " following a label indicates that the school district is in more than one county.

Due to space limitations, some areas and features such as water bodies, parks, and roads may not be labeled.

Note: This index map sheet provides the map sheet configuration in relation to the subject entity. Due to scale limitations, map content may be simplified. Refer to parent and/or inset map sheets for detailed map content.

OFF-RESERVATION TRUST LAND NAMES

T1700	Jicarilla Apache Nation
T1840	Laguna
T2400	Nambe
T2430	Navajo Nation
T2990	Pojoaque
T3415	San Ildefonso
T3495	Santa Clara
T4140	Taos
T4170	Tesuque
T4770	Zia

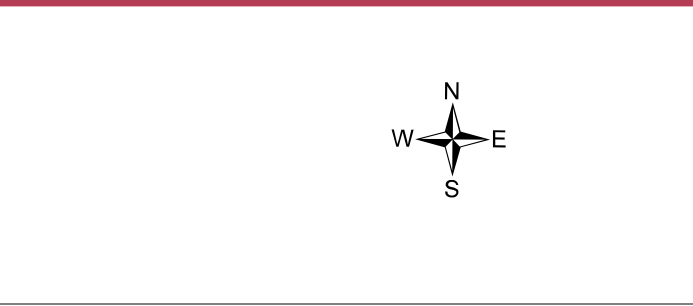
All legal boundaries and names are as of January 1, 2020. The boundaries shown on this map are for Census Bureau statistical data collection and tabulation purposes only; their depiction and designation for statistical purposes does not constitute a determination of jurisdictional authority or rights of ownership or entitlement.

Geographic Vintage: 2020 Census (reference date: January 1, 2020)
 Data Source: U.S. Census Bureau's MA7/TIGER database (TAB20)
 Map Created by Geography Division: December 23, 2020

U.S. DEPARTMENT OF COMMERCE U.S. Census Bureau

Projection: Albers Equal Area Conic
 Datum: NAD83
 Spheroid: GRS 80
 1st Standard Parallel: 32 16 36
 2nd Standard Parallel: 36 03 20
 Central Meridian: -106 01 31
 Latitude of Projection's Origin: 31 19 55
 False Easting: 0
 False Northing: 0

The plotted map scale is 1:308,400

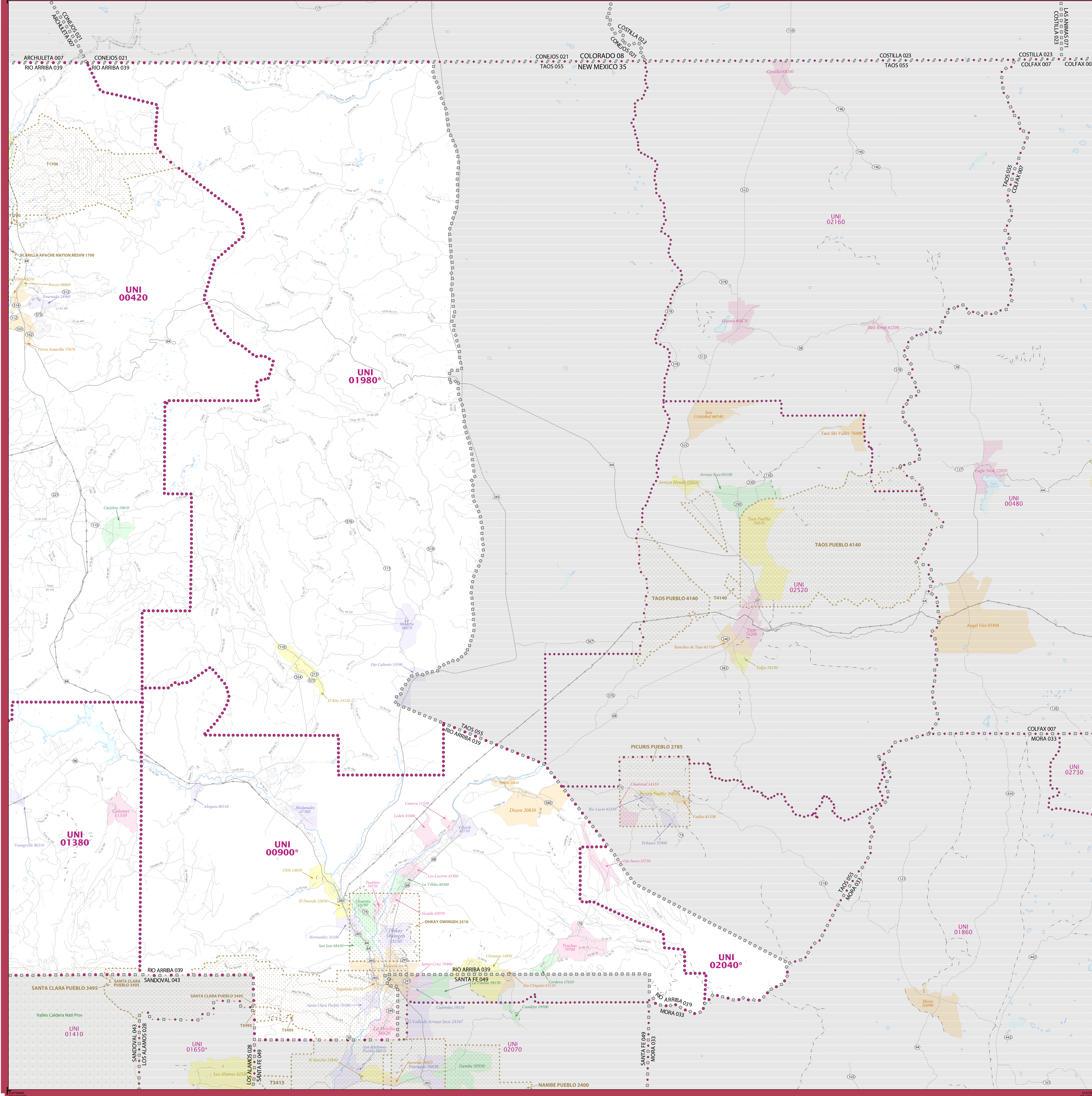


NAME: Rio Arriba County (039)
 ENTITY TYPE: County or statistically equivalent entity
 ST: New Mexico (35)

2020 CENSUS SD REF MAP (INDEX)
 Sheet ID: 25135030000

Total Sheets: 3 (Index 1; Parent 2; Inset 0)

2020 CENSUS - SCHOOL DISTRICT REFERENCE MAP: Rio Arriba County, NM



LEGEND

SYMBOL DESCRIPTION	SYMBOL	LABEL STYLE
International	☆☆☆☆☆	CANADA
Federal American Indian Reservation	[Dotted Pattern]	L'ANSE RES 1880
Off-Reservation Trust Land	[Dotted Pattern]	T1880
State American Indian Reservation	[Dotted Pattern]	Tama Res 9400
Alaska Native Regional Corporation	+++++	NANA ANRC 52120
State (or statistically equivalent entity)		NEW YORK 36
County (or statistically equivalent entity)	□□□□	ERIE 029
Minor Civil Division (MCD) ^{1,2}	○○○○	Bristol town 07485
Consolidated City	○●○○○	MILFORD 47500
Incorporated Place ^{3,4}	[Color Fill]	Davis 18100
Census Designated Place (CDP) ⁵	[Color Fill]	Incline Village 35100
Unified School District ⁴	[Purple Dotted]	UNI 03370
Secondary School District ⁴	[Orange Dotted]	SEC 99965
Elementary School District ⁴	[Green Dotted]	ELM 02220

DESCRIPTION	SYMBOL	DESCRIPTION	SYMBOL
Interstate	[Blue Line]	Water Body	[Blue Area]
U.S. Highway	[Black Line]	Port Belvoir	[Blue Box]
State Highway or State Road	[Black Line]	National or State Park, Forest, or Recreation Area	[Green Box]
Other Road	[Thin Black Line]	Yosemite NP	[Green Box]
Railroad	[Black Line]	Inset Area	[Green Box]
Pipeline or Power Line	[Black Line]	Outside Subject Area	[Grey Box]
Ridge or Fence	[Black Line]		
Nonlinear Boundary or Feature Not Elsewhere Classified	[Black Line]		

Where international, state, county, and/or MCD boundaries coincide, the map shows the boundary symbol for only the highest-ranking of these boundaries.

Geographic area names are followed by either their FIPS or census code.

1 MCD boundaries are shown in the following states in which some or all MCDs function as general-purpose governmental units: Connecticut, Illinois, Indiana, Kansas, Maine, Massachusetts, Michigan, Minnesota, Missouri, Nebraska, New Hampshire, New Jersey, New York, North Dakota, Ohio, Pennsylvania, Rhode Island, South Dakota, Vermont, and Wisconsin. (Note that Illinois and Nebraska have some counties covered by nongovernmental precincts and Missouri has most counties covered by nongovernmental townships.)

2 A " " following an MCD name denotes a false MCD. A " " following a place name indicates that a false MCD exists with the same name and FIPS code as the place; the false MCD label is not shown.

3 Place label color corresponds to the place fill color.

4 A " " following a label indicates that the school district is in more than one county.

Due to space limitations, some areas and features such as water bodies, parks, and roads may not be labeled.

OFF-RESERVATION TRUST LAND NAMES

11700 Jicarilla Apache Nation
 13415 San Ildefonso
 13495 Santa Clara
 14140 Taos

SUBJECT AREA SCHOOL DISTRICTS ON MAP SHEET

TYPE	CODE	NAME
UNI	00420	Charina Valley Independent Schools
UNI	00900	Espulvita Municipal Schools
UNI	01380	Jemez Mountain Public Schools
UNI	01980	Mesa Vista Consolidated Schools
UNI	02040	Peliasco Independent Schools

Key to Adjacent Sheets

1	2
---	---

Sheet Location within Entity