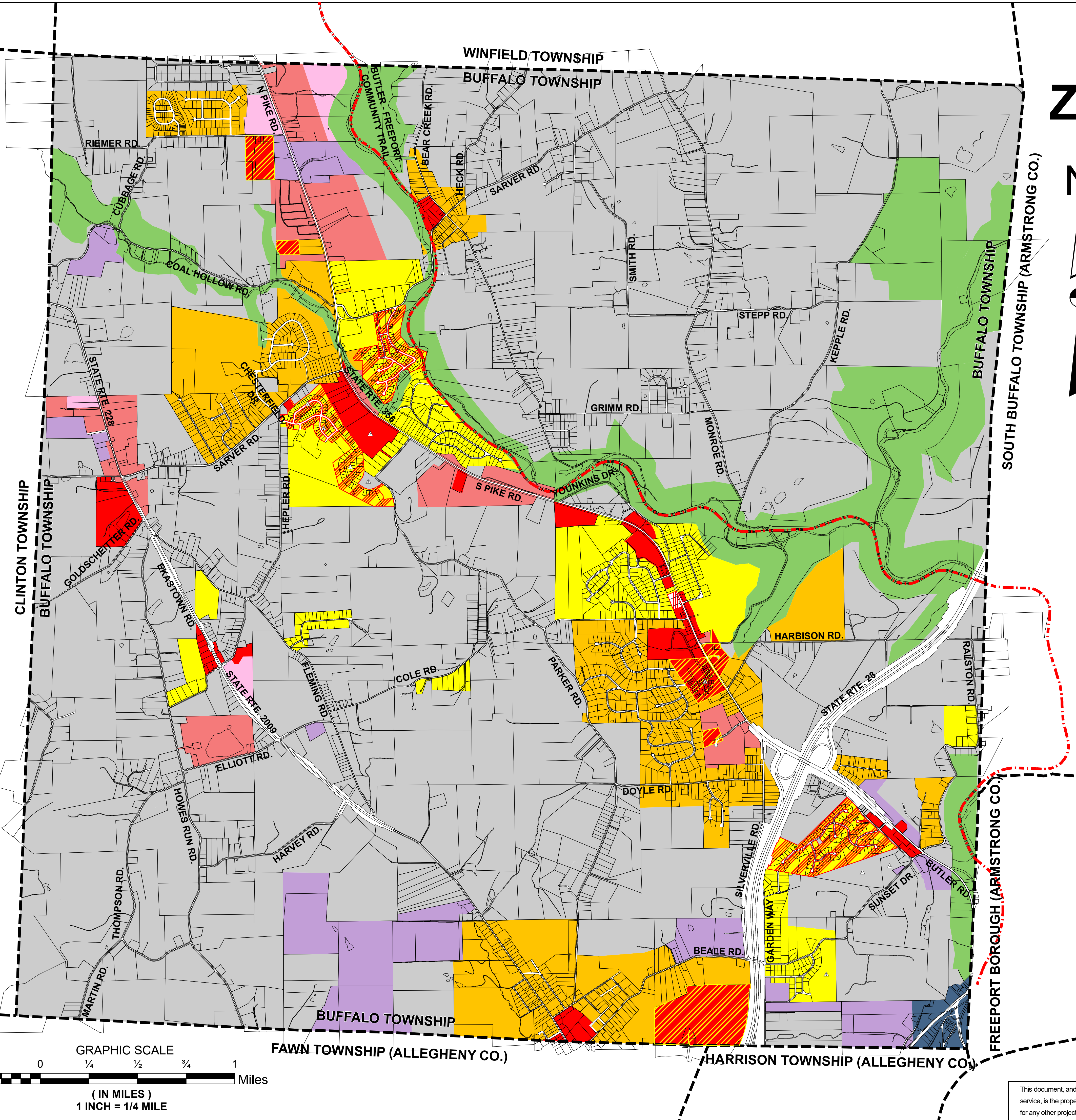


BUFFALO TOWNSHIP ZONING DISTRICTS MAP



LEGEND

- BUTLER - FREEPORT COMMUNITY TRAIL
- MUNICIPAL BOUNDARY LINE
- PARCEL BOUNDARY

ZONING DISTRICTS:

- A-1 AGRICULTURAL DISTRICT
- B-1 BUSINESS DISTRICT
- B-1 B-2 BUSINESS DISTRICT
- B-2 CENTRAL BUSINESS DISTRICT
- B-3 BUSINESS DISTRICT
- C-1 CONSERVATION DISTRICT
- CB-1 CONSERVATION AND TRADITIONAL NEIGHBORHOOD BUSINESS DISTRICT
- M-1 LIGHT MANUFACTURING DISTRICT
- M-2 MANUFACTURING DISTRICT
- PRD PLANNED RESIDENTIAL DEVELOPMENT
- R-1 SINGLE FAMILY RESIDENTIAL DISTRICT
- R-2 GENERAL RESIDENTIAL DISTRICT

THIS OFFICIAL ZONING MAP IS PART OF THE ZONING ORDINANCE OF THE TOWNSHIP OF BUFFALO, COUNTY OF BUTLER, COMMONWEALTH OF PENNSYLVANIA, ORDAINED AND ENACTED THIS 12TH DAY OF SEPTEMBER 2018

Janice J. Galore
SECRETARY

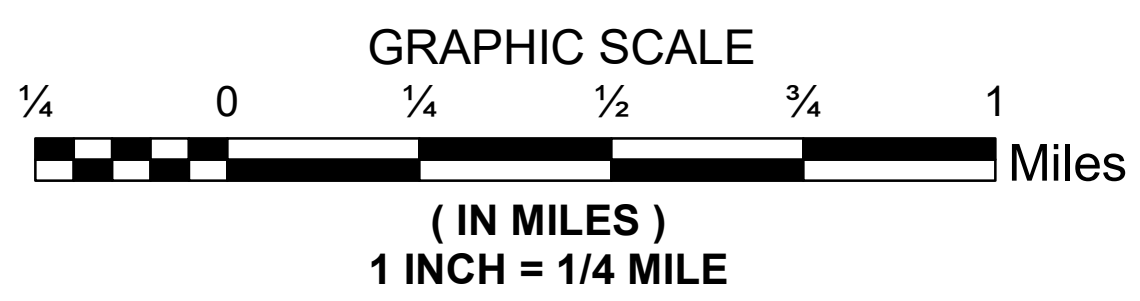
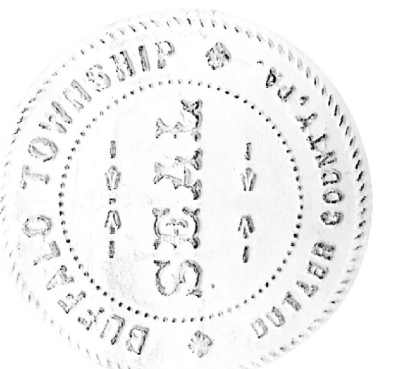
Russell Goff
CHAIRMAN

Rayl Dech
VICE-CHAIRMAN

John Lando
SUPERVISOR

SUPERVISOR

Matthew Schumacher
SUPERVISOR



ORIGINAL DRAWING
SCALE VERIFICATION

IF LINE IS NOT ONE INCH ON THIS DRAWING, ADJUST ALL SCALES AS REQUIRED

NO.	REVISION	DATE	BY
1	ISSUED FOR PUBLIC COMMENT	08/15/2018	JTG
2	REVISION	08/15/2018	JTG
3	REVISION	08/15/2018	JTG
4	REVISION	08/15/2018	JTG
5	REVISION	08/15/2018	JTG
6	REVISION	08/15/2018	JTG
7	REVISION	08/15/2018	JTG
8	REVISION	08/15/2018	JTG
9	REVISION	08/15/2018	JTG
10	REVISION	08/15/2018	JTG
11	REVISION	08/15/2018	JTG
12	REVISION	08/15/2018	JTG
13	REVISION	08/15/2018	JTG
14	REVISION	08/15/2018	JTG
15	REVISION	08/15/2018	JTG
16	REVISION	08/15/2018	JTG
17	REVISION	08/15/2018	JTG
18	REVISION	08/15/2018	JTG
19	REVISION	08/15/2018	JTG
20	REVISION	08/15/2018	JTG
21	REVISION	08/15/2018	JTG
22	REVISION	08/15/2018	JTG
23	REVISION	08/15/2018	JTG
24	REVISION	08/15/2018	JTG
25	REVISION	08/15/2018	JTG
26	REVISION	08/15/2018	JTG
27	REVISION	08/15/2018	JTG
28	REVISION	08/15/2018	JTG
29	REVISION	08/15/2018	JTG
30	REVISION	08/15/2018	JTG
31	REVISION	08/15/2018	JTG
32	REVISION	08/15/2018	JTG
33	REVISION	08/15/2018	JTG
34	REVISION	08/15/2018	JTG
35	REVISION	08/15/2018	JTG
36	REVISION	08/15/2018	JTG
37	REVISION	08/15/2018	JTG
38	REVISION	08/15/2018	JTG
39	REVISION	08/15/2018	JTG
40	REVISION	08/15/2018	JTG
41	REVISION	08/15/2018	JTG
42	REVISION	08/15/2018	JTG
43	REVISION	08/15/2018	JTG
44	REVISION	08/15/2018	JTG
45	REVISION	08/15/2018	JTG
46	REVISION	08/15/2018	JTG
47	REVISION	08/15/2018	JTG
48	REVISION	08/15/2018	JTG
49	REVISION	08/15/2018	JTG
50	REVISION	08/15/2018	JTG

BUFFALO TOWNSHIP
BUTLER COUNTY PENNSYLVANIA
BUFFALO TOWNSHIP ZONING DISTRICTS MAP

This document, and the ideas and designs incorporated herein, as an instrument of professional service, is the property of Bankson Engineers, Inc., and is not to be used, in whole or in part, for any other project without the written authorization of Bankson Engineers, Inc.

BE BANKSON ENGINEERS, INC.
CONSULTING ENGINEERS
CHESWICK, PA 15024

SCALE AS NOTED	DRAWN BY Z.T.F.	SHEETS IN SET 2
DATE AUG. 2018	APPROVED BY K.A.H.	DRAWING NUMBER 1-701-35-1

Coordinate System: NAD 1983 StatePlane Pennsylvania South FIPS 3702 Feet / Projection: Lambert Conformal Conic / Datum: North American 1983