

LEGEND	
	BP: BUSINESS PARK
	GC: GENERAL COMMERCIAL
	I: INDUSTRIAL
	MI: MINERAL INDUSTRIAL
	MRB: MIXED RESIDENTIAL BUSINESS
	RA: RURAL AGRICULTURAL
	RAR: RURAL AGRICULTURAL RESIDENTIAL
	RC: RURAL CONSERVATION
	NC: NEIGHBORHOOD COMMERCIAL
	SR: SUBURBAN RESIDENTIAL
	UR: URBAN RESIDENTIAL
	WTO/SEO: WIND TURBINE/SOLAR ENERGY OVERLAY
	PRD: PLANNED RESIDENTIAL DEVELOPMENT OVERLAY

HOLLENBACK TOWNSHIP

DORRANCE TOWNSHIP

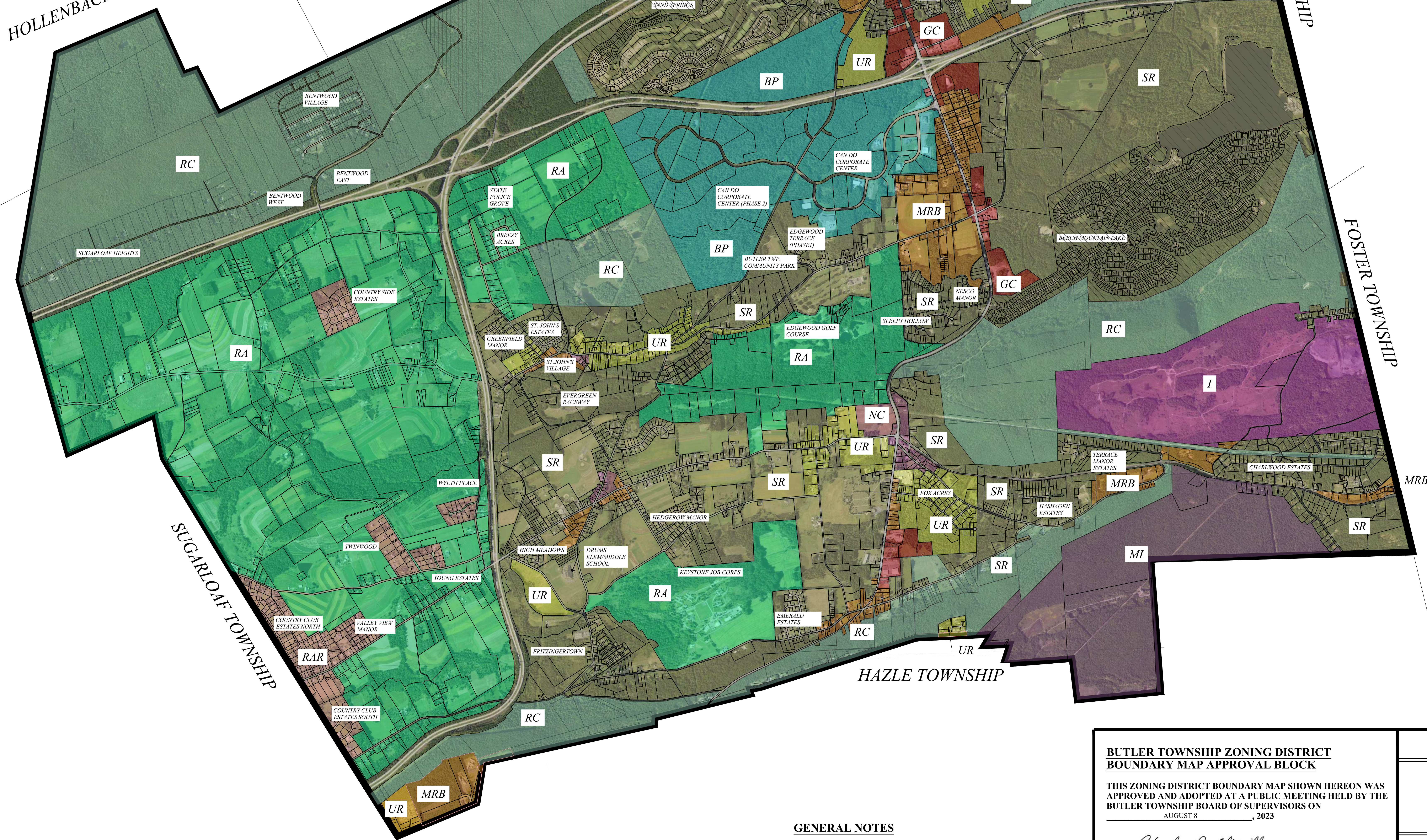
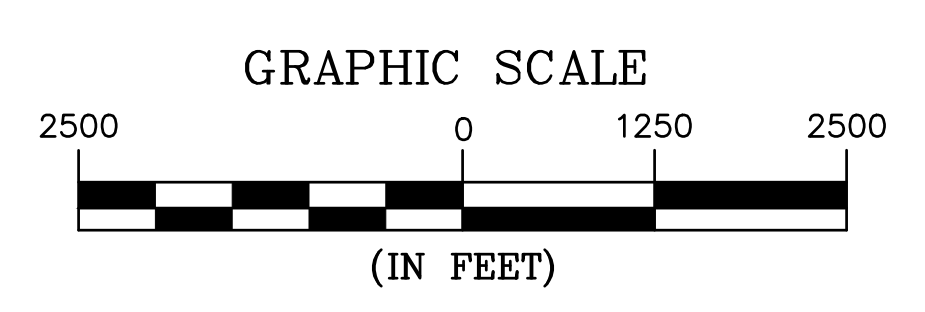
WRIGHT TOWNSHIP

DENISON TOWNSHIP

FOSTER TOWNSHIP

SUGARLOAF TOWNSHIP

HAZLE TOWNSHIP



**GENERAL NOTES**

1. AERIAL PHOTOGRAPHY SHOWN HEREON IS FROM 2019 PASDA MAPPING.
2. TAX PARCEL BOUNDARY LINES, SHOWN HEREON, ARE BASED ON AN OVERLAY OF DIGITAL DATA ATTAINED FROM THE LUZERNE COUNTY GIS/MAPPING DEPARTMENT.
3. MUNICIPAL BOUNDARIES SHOWN HEREON ARE FROM PASDA.

**BUTLER TOWNSHIP ZONING DISTRICT BOUNDARY MAP APPROVAL BLOCK**

THIS ZONING DISTRICT BOUNDARY MAP SHOWN HEREON WAS APPROVED AND ADOPTED AT A PUBLIC MEETING HELD BY THE BUTLER TOWNSHIP BOARD OF SUPERVISORS ON AUGUST 8, 2023

*Charles P. Altmiller* 08/08/2023  
MR. CHARLES P. ALTMILLER - CHAIRMAN DATE

*Michael J. Reich* 08/08/2023  
MR. MICHAEL J. REICH - VICE CHAIRMAN DATE

**RJD ENGINEERING INC.**

ZONING DISTRICT BOUNDARY MAP FOR BUTLER TOWNSHIP

BUTLER TOWNSHIP : LUZERNE COUNTY, PA

DATE: 05/03/23 : SCALE: AS SHOWN : SHEET 1 / 1

RJD ENGINEERING, INC.  
8 WEST BROAD STREET-SUITE 700  
HAZLETON, PA 18201  
(570) 459-2609

RJD JOB NO. 23-100