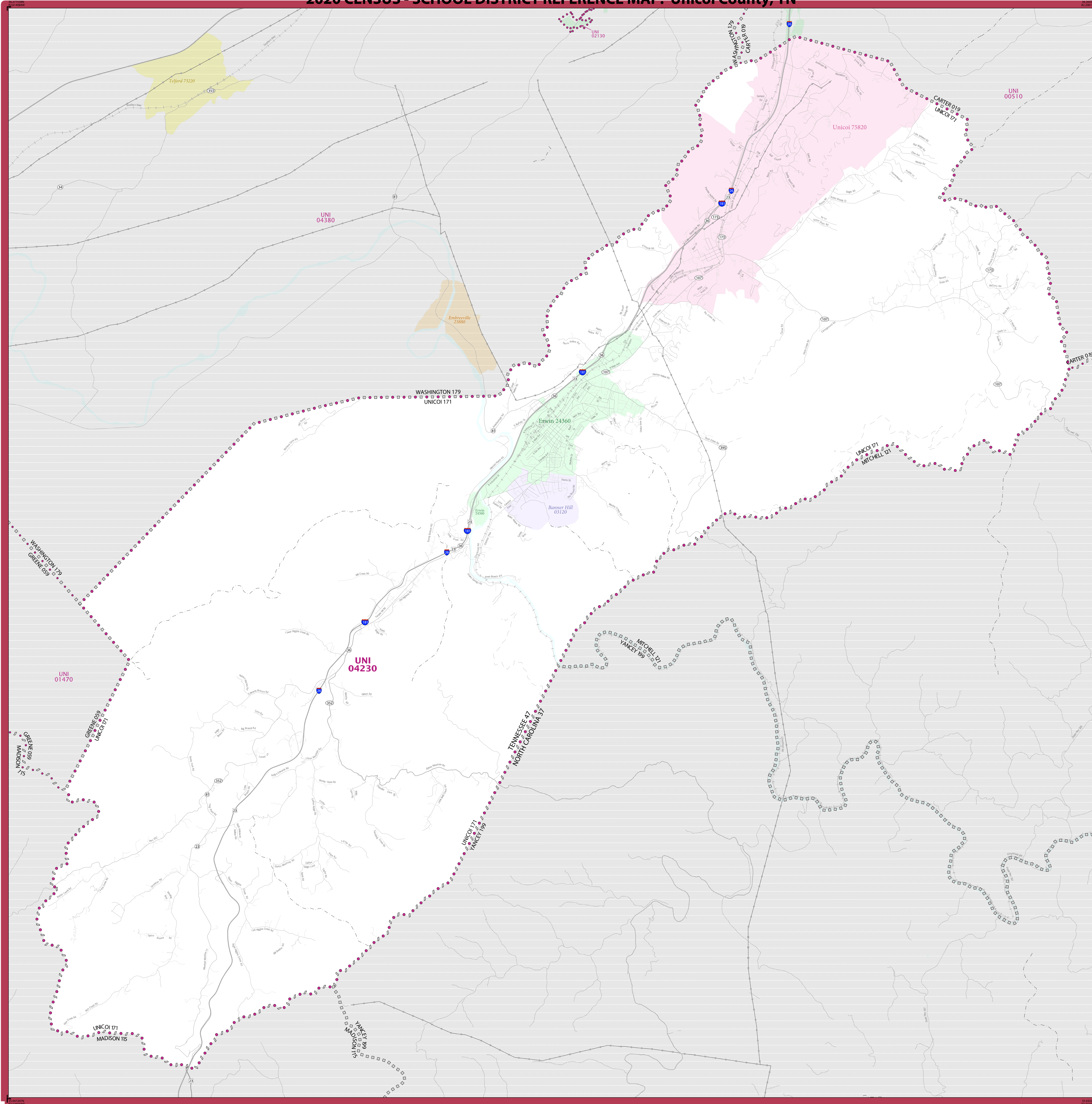


2020 CENSUS - SCHOOL DISTRICT REFERENCE MAP: Unicoi County, TN



LEGEND	
SYMBOL DESCRIPTION	LABEL STYLE
International	☆☆☆☆☆ CANADA
Federal American Indian Reservation	L'ANSE RES 1880
Off-Reservation Trust Land	T1880
State American Indian Reservation	Tama Res 9400
Alaska Native Regional Corporation	NANA ANRC 52120
State (or statistically equivalent entity)	NEW YORK 36
County (or statistically equivalent entity)	ERIE 029
Minor Civil Division (MCD) ^{1,2}	Bristol town 07485
Consolidated City	MILFORD 47500
Incorporated Place ^{3,3}	Davis 18100
Census Designated Place (CDP) ³	Incline Village 35100
Unified School District ⁴	UNI 03370
Secondary School District ⁴	SEC 99965
Elementary School District ⁴	ELM 02220

DESCRIPTION	SYMBOL	DESCRIPTION	SYMBOL
Interstate	[Blue line with shield]	Water Body	[Blue wavy line]
U.S. Highway	[Black line with shield]	Military	[Black line with star]
State Highway or State Road	[Black line with circle]	National or State Park, forest, or Recreation Area	[Green outline]
Other Road	[Grey line]	Yosemite NP	[Green outline]
4WD Trail, Steepway, Alley, Walkway, or Ferry	[Dashed line]	Inset Area	[Green outline]
Railroad	[Black line with cross-ticks]	Outside Subject Area	[Grey outline]
Pipeline or Power Line	[Black line with cross-ticks]		
Ridge or Fence	[Dashed line]		
Nonvisible Boundary or Feature Not Elsewhere Classified	[Dotted line]		

Where international, state, county, and/or MCD boundaries coincide, the map shows the boundary symbol for only the highest-ranking of these boundaries.

Geographic area names are followed by either their FIPS or census code.

1 MCD boundaries are shown in the following states in which some or all MCDs function as general-purpose governmental units: Connecticut, Illinois, Indiana, Kansas, Maine, Massachusetts, Michigan, Minnesota, Missouri, Nebraska, New Hampshire, New Jersey, New York, North Dakota, Ohio, Pennsylvania, Rhode Island, South Dakota, Vermont, and Wisconsin. (Note that Illinois and Nebraska have some counties covered by nongovernmental precincts and Missouri has most counties covered by nongovernmental townships.)

2 A " " following an MCD name denotes a false MCD. A " " following a place name indicates that a false MCD exists with the same name and FIPS code as the place; the false MCD label is not shown.

3 Place label color corresponds to the place fill color.

4 A " " following a label indicates that the school district is in more than one county.

Due to space limitations, some areas and features such as water bodies, parks, and roads may not be labeled.

SUBJECT AREA SCHOOL DISTRICTS ON MAP SHEET

TYPE	CODE	NAME
UNI	04230	Unicoi County School District

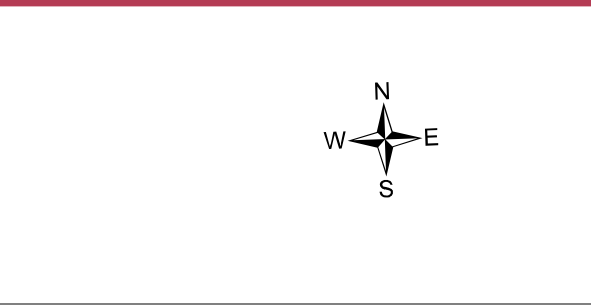
All legal boundaries and names are as of January 1, 2020. The boundaries shown on this map are for Census Bureau statistical data collection and tabulation purposes only; their depiction and designation for statistical purposes does not constitute a determination of jurisdictional authority or rights of ownership or entitlement.

Geographic Vintage: 2020 Census (reference date: January 1, 2020)
 Data Source: U.S. Census Bureau's MAINTIGR database (TAB20)
 Map Created by Geography Division: December 23, 2020

U.S. DEPARTMENT OF COMMERCE U.S. Census Bureau

Projection: Albers Equal Area Conic
 Datum: NAD 83
 Spheroid: GRS 80
 1st Standard Parallel: 35 16 28
 2nd Standard Parallel: 36 53 50
 Central Meridian: 85 58 43
 Latitude of Projection's Origin: 34 59 38
 False Easting: 0
 False Northing: 0

The plotted map scale is 1:50,228



Sheet 1 of 1 PARENT sheets
 Total Sheets: 1 (Index 0; Parent 1; Inset 0)

NAME: Unicoi County (171)
 ENTITY TYPE: County or statistically equivalent entity
 ST: Tennessee (47)

2020 CENSUS 50 REF MAP (PARENT)
 Sheet ID: 25154717101