

**Western  
Connecticut**

**2018**

**Commuter  
Parking Inventory**

**Individual Lot Summaries**

Prepared for WestCOG by  
Housatonic Area Regional Transit

# Western Connecticut Commuter Parking Inventory

## INDIVIDUAL LOT SUMMARIES

April 2018

The preparation of this report has been financed in part through funds from the US Department of Transportation, under Title 23 USC, and from the Connecticut Department of Transportation. This document is disseminated under the sponsorship of the Department of Transportation in the interest of information exchange. The contents of this report reflect the views of HVMPO and do not necessarily reflect the official view of the US or the Connecticut Department of Transportation. The report does not constitute a specification or regulation

Prepared for WestCOG by



Eric C. Bergstraesser, Chief Executive Officer

### Report Staff

Richard A. Schreiner, Director of Service Development

Harrison G. Wenchell, Transportation Planner

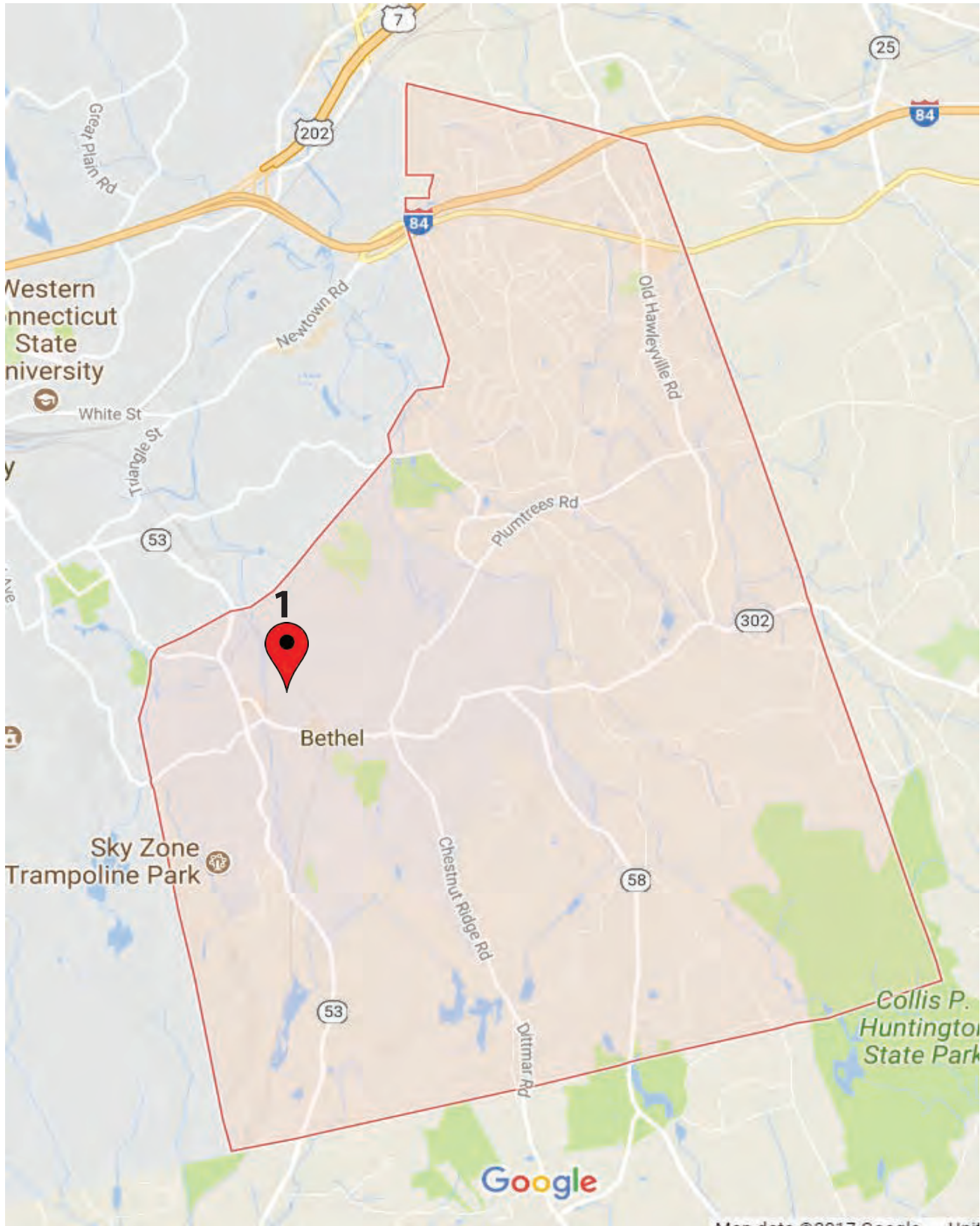
John Gatto, Graphic Design and Marketing Coordinator



## CONTENTS

Bethel	Lot Map	3
	Bethel MNRR Station	4
Danbury	Lot Map	5
	Danbury MNRR Station	6
	Federal Road	7
	I-84 @ Exit 1	8
	I-84 @ Exit 2	9
	Miry Brook	10
	I-84 @ Segar Street	11
	White Turkey Ext.	12
Darien	Lot Map	13
	Darien MNRR Station	14
	Noroton Heights MNRR Station	15
Greenwich	Lot Map	16
	Cos Cob MNRR Station	17
	Greenwich MNRR Station	18
	Old Greenwich MNRR Station	19
	Riverside MNRR Station	20
New Canaan	Lot Map	21
	New Canaan MNRR Station	22
	Talmadge Hill MNRR Station	23
New Fairfield	Lot Map	24
	Ball Pond Firehouse	25
	Company A Firehouse	26
Newtown	Lot Map	27
	I-84 @ Exit 9	28
	I-84 @ Exit 11	29
Norwalk	Lot Map	30
	East Norwalk MNRR Station	31
	I-95 @ Exit 16	32
	Merritt 7 MNRR Station	33
	Route 15 @ Exit 38	34
	Rowayton MNRR Station	35
	South Norwalk MNRR Station	36
Redding	Lot Map	37
	West Redding MNRR Station	38
Ridgefield	Lot Map	39
	Bark Park Lot	40
	Branchville MNRR Station	41
	Jesse Lee Church	42
Stamford	Lot Map	43
	Glenbrook MNRR Station	44
	Route 15 @ Exit 35	45
	Springdale MNRR Station	46
	Stamford Transportation Center	47
Westport	Lot Map	48
	Greens Farms MNRR Station	49
	I-95 @ Exit 18	50
	Route 15 @ Exit 41	51
	Route 15 @ Exit 42	52
	Saugatuck MNRR Station	53
Wilton	Lot Map	54
	Cannondale	55
	Wilton MNRR Station	56
	Wolfpit Road	57
Park and Ride Matrix		58
Transit Connections		59
Rail Station Parking Cost / Capacity Verification Form		60





# BETHEL

Train Station Lot Locations

Number	Location	Capacity
1	Bethel MNRR Station, Durant Avenue	197



# Bethel Metro-North Train Station



Parking at the Bethel train station is managed through the town clerk's office which sets policy, issues permits and maintains waiting lists. Parking enforcement and security are the responsibility of the Police Department.

## The Bethel Railroad Station is located at:



13 Durant Avenue, opposite Bishop Curtis Homes. Bethel's station is 20.6 rail miles north of the main line at the South Norwalk Railroad Station and 3.3 miles north of the West Redding Station. The location is at 41.3176°N, 73.4173°W.

Lot maintenance is provided by the Bethel Public Works Department. Annual parking permits may be purchased for \$250.

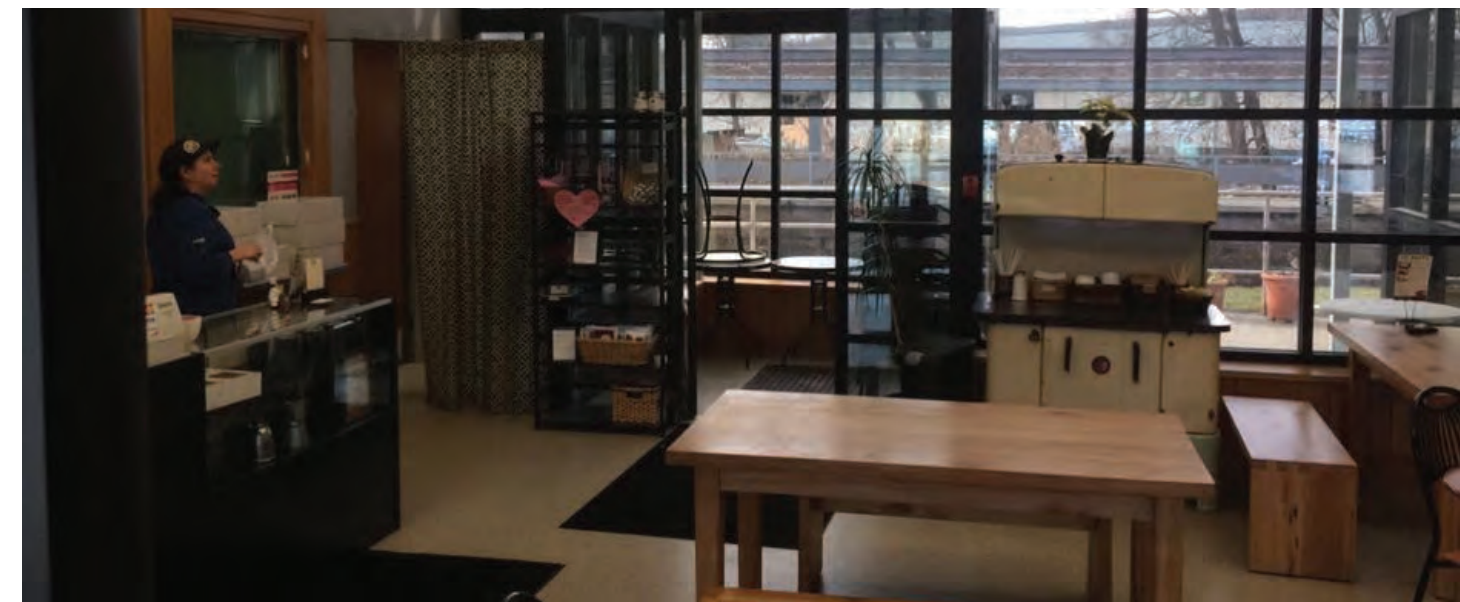
At the time of publication, there was a 50 person waiting list; the town issues about 250 permits annually. Metered spaces are available for \$0.25 per hour with a 24 hour maximum for more casual users.

On the date of the observations, there were 9 empty daily spaces, 4 empty spaces designated for persons with disabilities and 41 monthly permit spaces open in the 188 space lot. Both the EV spaces were empty as were two spaces marked "reserved" and one for Metro-North employees. The lot is currently undergoing an expansion with an additional 132 spaces under construction.



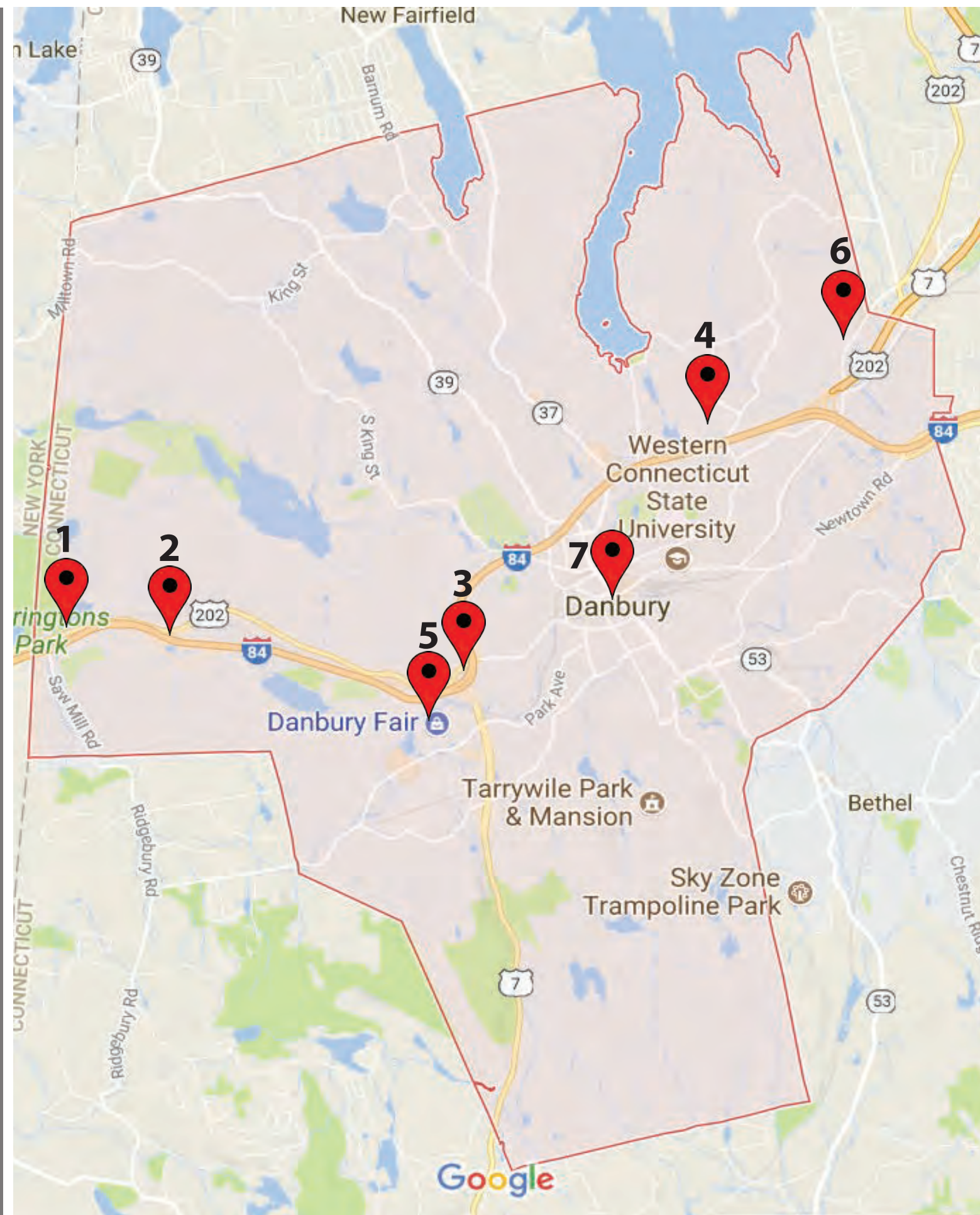
Signage on nearby Durant Avenue and in the lot is in good condition. Pavement in the lot was cracked and potholed. The lot was clean and free from trash. It is accessible to the HARTransit 5 Bethel Center Route.

The facility features pedestrian access, permit and metered parking, preferred parking and charging stations for 2 EV's, bicycle racks, a station building housing the Daily Fare Café, restrooms, outdoor tables, a high-level platform with a lighted canopy, payphone and benches and ramps for persons with disabilities. Metro-North Railroad and HARTransit bus schedules are available. A camera system is installed in the parking area. Since observations of this lot were noted in January of 2017, the Bethel Train Station has had about 130 new parking spaces constructed. Permit prices will remain at \$250 annually.



Key Observations: Prior to the new construction of this lot, the Bethel Train Station was approaching maximum capacity of the available daily and permit spaces during peak hours. The addition of over 130 new spaces has addressed this concern, allowing the lot to more comfortably accommodate commuters. The lot's infrastructure is in good condition, offers key amenities and provides a transit connection.





# DANBURY

Park and Ride Lot Locations

Number	Location	Capacity
1	I-84 @ Exit 1	160
2	I-84 @ Exit 2	112
3	I-84 @ Segar Street	45
4	Route 7 @ Federal Road	115
5	Route 7 @ Miry Brook	171
6	White Turkey ext.	75

Train Station Lot locations

Number	Location	Capacity
7	Danbury MNRR Station, Patriot Drive	146



# Danbury Metro-North Train Station

Policy is set by the Mayor's office and implemented by the Danbury Parking Authority (DPA). The DPA is responsible for permit sales, maintenance of waiting lists and parking enforcement. Maintenance of the lot and structure is the responsibility of the public buildings department and the Department of Public Works. Security is provided by the Danbury Police Department and the DPA. At the time of publication for this report there was no waiting list for parking permits.



## The Danbury MTA station is located at:



Patriot Drive in Danbury opposite the Patriot Garage at 41.3961°N, 73.4488°W. There is a 146 space lot including paid daily and monthly parking spaces (week-end parking is free) as well as 15 minute temporary parking spaces.

Open spaces included: 81 of 129 permitted spaces, 6 of 12 daily (10 hour) metered spaces, 4 of 5 spaces for persons with disabilities

Rates: Metered spaces are \$0.25 per 15 minutes with a 10 hour limit. Daily permits are sold at the Patriot garage for \$9. Annual permits are sold the Patriot Garage for \$250.

The lot is served by HARtransit 2 Stony Hill bus route and is a short distance from the 7 New Milford and New Milford LOOP bus routes traveling on White Street.



Amenities include a station building with restrooms, newspaper vending machines, ticket vending machines, train schedules, waste receptacles, benches, bike racks and variable message signs for train arrivals and departures.



Construction equipment and materials and a shipping container were observed in the lot and were taking up a number of spaces. There was one open 15 minute parking space.

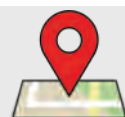
**Key Observations:** The Danbury Metro-North Train Station, overall, is well maintained. The facility building seems to be in good shape, offering several amenities. The lot needs restriping, especially by the staged construction equipment on the east side of the lot. This equipment should be moved to a site where it does not block parking spaces.



# Federal Road Park and Ride Lot



The Federal Road Park and Ride Lot is located at:



41.4229°N, 73.4195°W at Federal Road in Danbury near its junction with Route 7.

There is no charge to park in the 115 space lot.

There were 78 empty spaces in the general parking area.

All of the 5 spaces designated for persons with disabilities were unoccupied.

The lot is managed and maintained by CTDOT.

Signage around the lot was in good condition and overhead lighting is installed. Pavement was cracked and some trash was observed in the lot.



A shelter is present facing Federal Road adjacent to the lot. The pathway to the shelter was obstructed by a snow pile at the time of observation. The shelter condition is fair with several lower panels missing or damaged. Bus schedule information in the shelter was outdated.



The lot is served by the HARtransit Danbury-Brewster Shuttle, as well as the 7, 4 and New Milford LOOP bus routes.

**Key Observations:** This lot is fairly well accessible for persons with disabilities, as it is flat and provides parking spaces directly in front of the sidewalk to the bus shelter. Lot striping is in good condition and the lot offers transit connections. Recommendations include the need for the sidewalk to the bus shelter to consistently be cleared of snow. The bus shelter needs to include updated schedule information.



# I-84 Exit 1 Park and Ride Lot



I-84 Exit 1, Danbury Park and Ride Lot is located at:



Exit 2 off I-84 in Danbury CT 41.3916°N 73.5366°W.

This is a large linear lot with 160 total spaces including 5 spaces designated for persons with disabilities.

There were 126 empty spaces observed, including all spaces designated for disabled commuters.

There is signage marking the lot location.

Sections of curbing are broken.

There is no fee to use this CTDOT managed lot.



The lot has cracked pavement, fencing on the margin of the lot is overgrown with shrubs and small trees. Trash was observed on the margins of the lot.



A passenger shelter was installed roughly in the center of the lot. The shelter was destroyed in a motor vehicle accident on 12/15/16 and removed by CTDOT.



The lot is served by HARTtransit's Danbury-Brewster Shuttle and #3 Mill Plain bus routes.

**Key Observations:** This park and ride lot would benefit from the routine pick up of trash and debris along the perimeter fencing. It would also help to keep up with the repair of the broken pieces of curbing so they do not accumulate into a larger problem over time.



## I-84 Exit 2 Park and Ride Lot



**I-84 Exit 2, Danbury Park and Ride Lot is located at:**



I-84 exit 2 in Danbury CT 41.3915°N, 73.5203°W.

This large lot has 112 spaces including 8 designated for persons with disabilities.

There were 42 empty spaces observed including all spaces for disabled commuters.

There is no charge to park in this CTDOT managed lot.

Paving in the lot is cracked. Signage in the lot and fencing on the margins is damaged



A passenger shelter is present, also damaged and with outdated schedule information.

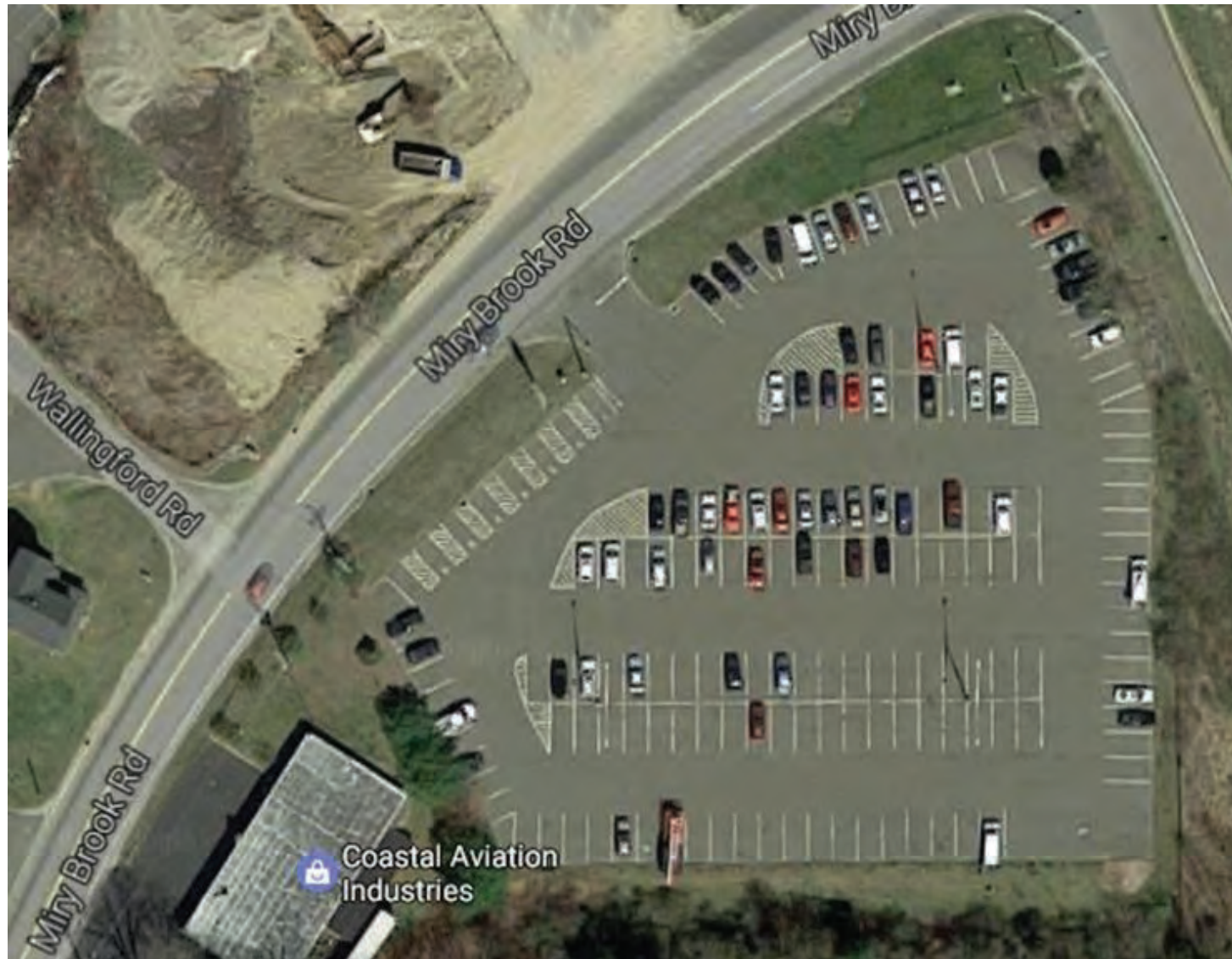


The lot is served by the HARtransit Danbury-Brewster Shuttle and #3 Mill Plain bus routes.

**Key Observations:** This lot has various segments of cracked pavement that could become larger potholes, potentially impeding accessibility and efficiency for commuters in the future. This location is accessible to several public bus routes. The bus shelter needs updated schedule information and the repair of several missing or damaged panels.



# Miry Brook Park and Ride



## The Miry Brook Road Park and Ride lot is located at:



Miry Brook Road in Danbury at 41.3700°N, 73.4764°W. This large CTDOT managed lot is adjacent to Miry Brook Road at its intersection with Sugar Hollow Road.

There were 105 empty spaces observed in the 171 space lot.

There are 7 spaces dedicated to persons with disabilities that were all unoccupied.

The unusual shape of the lot results in sections of unusable paving in the corners, especially in the south east section of lot.

The lot is served by the Danbury Route 7 Link bus.



The lot has cracked curbing and cracked and potholed pavement and is in need of restriping. There was a disused stanchion for the former pay-phone still in place. The lot had overhead lighting and directional signage in place.



**Key Observations:** It is recommended that the outdated equipment, mainly the payphone station, be removed. Also, the State of Connecticut should consider restriping this lot in a way that maximizes the available lot space.



# I-84 Exit 4 Segar Street Park and Ride



The fence bordering the lot near a small stream is in disrepair. The angled posts on the fence may be evidence of soil creep on the slope down to the stream.

I-84 Exit 4, Segar Street, Danbury Park and Ride is located at:



Segar Street, approximately 0.3 mi. from exit 4 of I-84 in Danbury; 41.3856°N, 73.4753°W. There is no charge for parking.

Lot has 45 spaces according to information published by CTDOT, but is unstriped and unpaved.

There were 40 empty spaces in the lot.

The lot is signed and lit but there are no specially designated parking areas for persons with disabilities.

It is served by HARtransit's 6 and Mall-Hospital LOOP bus routes.



The condition of the process material was good and the lot is clean.



**Key Observations:** It is recommended that there be a more distinguishable boundary established for this lot. The current layout gives the impression that this lot acts as overflow parking for the neighboring restaurant, which is what it is largely and unofficially used for during off-peak hours. The lot should be paved and striped to establish clear limits between parking for the commuter lot and the nearby restaurant. The lot is not easily accessible for persons with disabilities due to the lack of pavement and designated parking spaces.



# White Turkey Park and Ride Lot



## The White Turkey Park and Ride Lot is located at:



41.4285°N, 73.4112°W on White Turkey Extension near the entrance to Berkshire Corporate Park.

This is a CTDOT owned and maintained facility.

There is no charge to park.

There were 36 open spaces in the general parking area and 2 open spaces of 3 reserved for persons with disabilities.

The entire lot has 75 spaces.

The facility is served by the HARtransit Danbury-Brewster Shuttle.

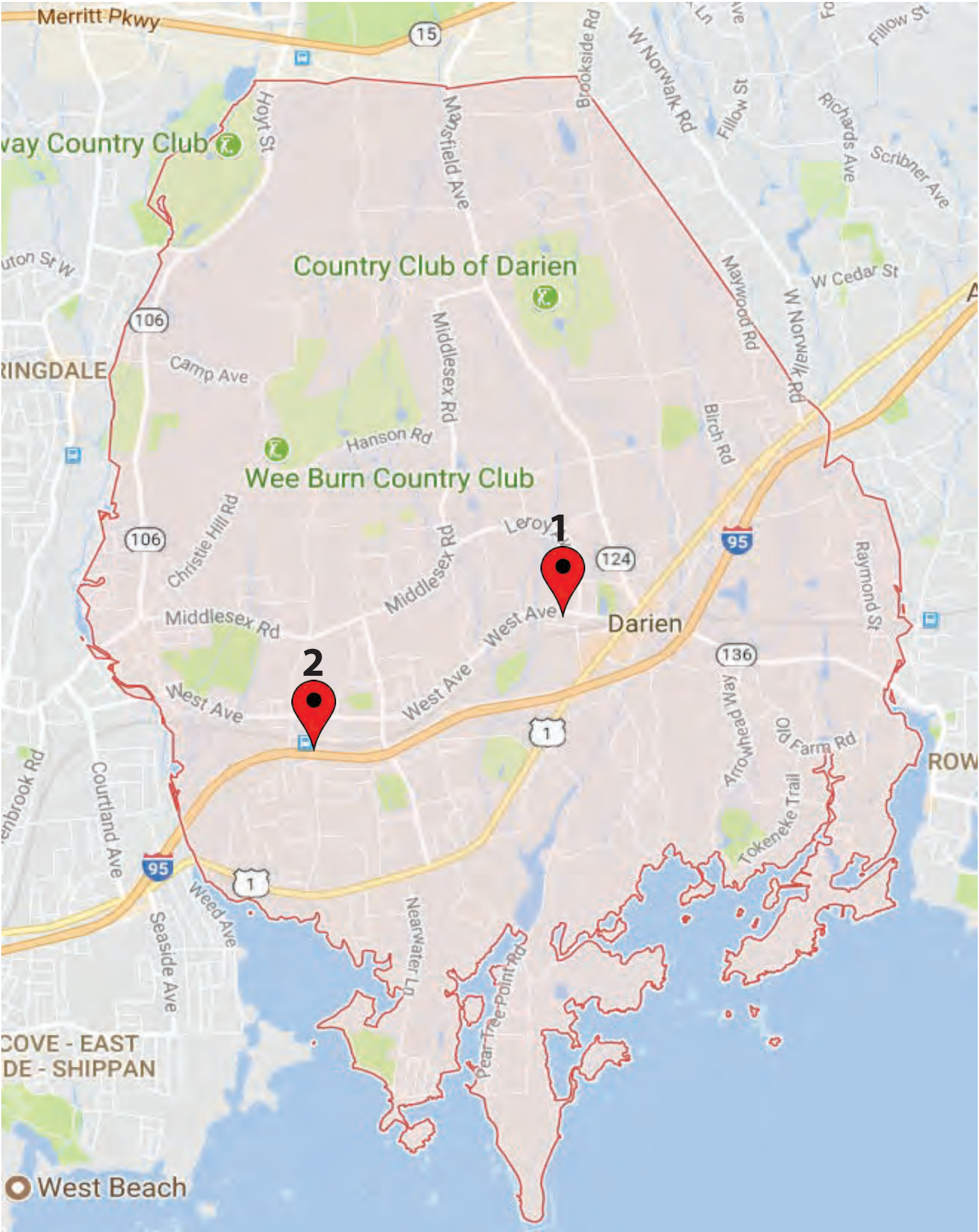


A gate to a service road in the southwest corner of the lot was open. The fencing on either side of the gate is overgrown and in disrepair. There was also a downed light post near the entrance to the lot at the time of observation in January, which remained on the lot property as of August. There was light trash in the lot.



**Key Observations:** This location has cracked and potholed pavement and needs restriping. The signage is damaged and needs to be replaced.





# DARIEN

Train Station Lot Locations

Number	Location	Capacity
1	Darien MNRR Station, 33 West Avenue	638
2	Noroton Heights MNRR Station, 325 Heights Road	765



# Darien Metro-North Train Station



**The Darien MTA station is located at:**



33 West Avenue in Darien at 41.0769°N, 73.4718°W. Amenities at the station building include restrooms, benches, ticket vending machine, waste receptacles and a soda vending machine. The Leroy West Lot at the Darien Train Station is owned by the Town of Darien and only Darien residents may hold permits for the Leroy West Lot. There are 638 spaces here.

This lot is served by CTtransit route 344 Glenbrook Road.

Leroy Avenue East – There was one open permit space in this lot.

Darien Station – No open spaces in this lot. The pavement was cracked and needs restriping.

Mechanic Street – 7 open permit spaces were noted.

Leroy Avenue West – There was some cracked pavement but lot is in overall good condition. 55 open permit spaces.

Squab Lane – A narrow strip of parking with 15 open permit spaces. Pavement is cracked.

Center Street South – 6 open permit spaces.

Center Street North – 8 open permit spaces.

Tokeneke Road – 10 open permit spaces.

Fee for annual permits is \$400.00 for the year. There is a waiting list of about six years for annual permits, with a charge of \$10 per year to remain on the wait list. Daily parking is available in designated parking spaces. Payment is required from 7 a.m. to 3:30 p.m., Monday through Friday. Parking is free on weekends and on holidays. Daily parking is \$4 per day. Monthly permits are available for \$65 and are valid for a calendar month.



Parking is managed primarily by the Darien Parking Authority and Department of Public Works. The town Planning and Zoning office and Board of Selectman maintain control over other management aspects.

**Key Observations:** The station building in this lot has one missing glass exterior panel and interior displays that are in disrepair. The town should consider repairing these as well as repainting the station building. The station provides key amenities to commuters and is otherwise in good condition. The lots are well maintained.



# Noroton Heights Metro-North Train Station



## The Noroton Heights train station is located:



325 Heights Road in Darien at 41.0687°N, 73.4970°W. The parking areas are placed adjacent to the platforms.

Daily parking is available in designated parking spaces. Payment is required from 7 a.m. to 3:30 p.m., Monday through Friday. Parking is free on weekends and on holidays. Effective 1/1/2017, daily parking is \$4 per day. Multiple consecutive days may be purchased at once.

Monthly Passes may be purchased for daily lots for \$65 for a calendar month. The monthly pass is for use in the pay station lots but may be used to park in permit lots after 9:30 am.

This station is served by CTtransit Route 344 Glenbrook Road.

Noroton Heights west lot – There were 22 open daily spaces and one open spot reserved for persons with disabilities in this 218 space lot.

Noroton Heights east lot –17 permit spaces and 3 additional spaces were open for persons with disabilities in this lot. Normal capacity for this lot is 442 spaces.

Noroton Heights Post 53 Lot – There were 18 open daily spaces in this 105 space lot.

The lots at the Noroton Heights Train Station are operated by the Town of Darien, but owned by the State of Connecticut; non-residents can purchase a Noroton Heights Lot permit.

Fee for annual permits is \$400.00 for the year. After mid-December there are late fees for renewals. No renewals are accepted after end of January for the current year. There is a waiting list of 7.5 years for annual permits, with a charge of \$10 per year to remain on the wait list.

There is a large corrugated metal lean-to shelter on the west side of the tracks and basic transit bus shelters on the opposite platform. Amenities include trash receptacles, ticket vending machine, benches and bicycle parking. The original historic station building is preserved near the intersection of Heights Road and Noroton Avenue. Explorer Post 53 operates an ambulance station near the intersection of Noroton Avenue and the Connecticut Turnpike.

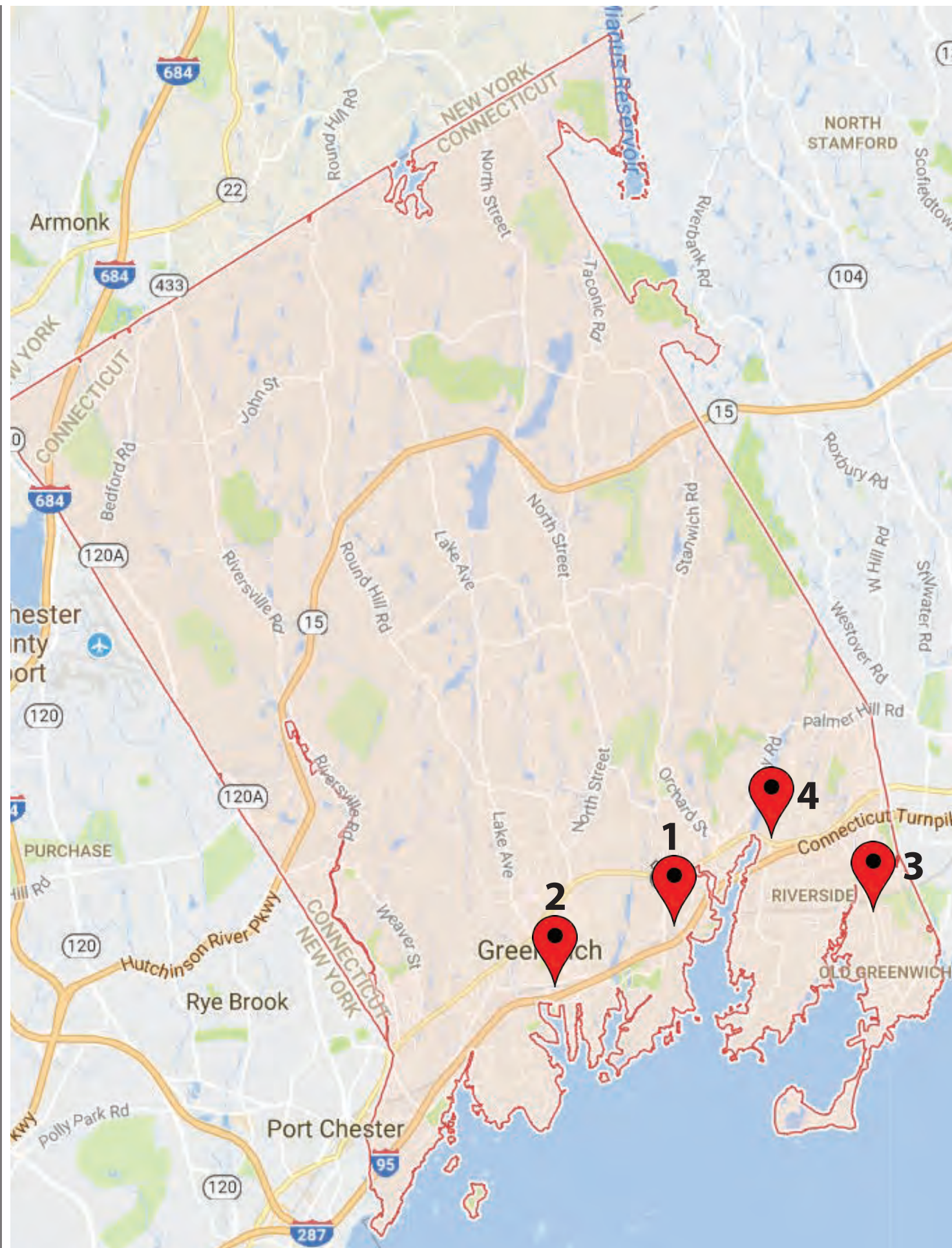
The pavement in the lots were cracked. The Noroton Heights East lower lot was being used for staging construction for a platform replacement project at the time of the observation and approximately 30 spaces were inaccessible.



Parking is managed primarily by the Darien Parking Authority and Department of Public Works. The town Planning and Zoning office and Board of Selectman maintain control over other management aspects.

**Key Observations:** This lot location offers easy access to Interstate 95 and is uniquely situated next to the Darien Emergency Medical Services building. The lot is in good condition and is well maintained.





# GREENWICH

Train Station Lot Locations

<i><b>Number</b></i>	<i><b>Location</b></i>	<i><b>Capacity</b></i>
1	Cos Cob MNRR Station, 1 Station Drive	611
2	Greenwich MNRR Station, 20 Railroad Avenue	1117
3	Old Greenwich MNRR Station, 1 Sound Beach Ave	571
4	Riverside MNRR Station, 1 Riverside Avenue	319



# Cos Cob Metro-North Train Station



## The Cos Cob Metro-North train Station is located at:

1 Station Drive in Greenwich at 41.0299°N, 73.6000°W.



There are a total of 611 parking spaces available in this location in surface lots adjacent to the station building and platform. The total is comprised of 555 total permit spaces and 56 total daily spaces.

Amenities include indoor waiting area, restrooms, concession, waste receptacles, seating, TVM, Bicycle and Scooter parking.

A shelter is located on the platform opposite the station building.

There is no public bus service to this station.

Permit parking is \$415 annually with a waiting list of 1.5 years. Daily parking is \$5.

Parking is managed by the Greenwich Department of Parking Services.

In the lot on the opposite side there were 2 open daily spaces, 6 permit spaces and one open space for persons with disabilities.



On the station side there were 44 open permit spaces and one space open designated for the stationmaster.



**Key Observations:** This location has pavement and curbing that is patched and broken. There were occasional potholes in the spaces, specifically underneath the bridge by the main station building. The lot should be restriped.



# Greenwich Metro-North Train Station



**The Greenwich Railroad Station lot is located at:**



20 Railroad Avenue in Greenwich at 41.0214°N, 73.6252°W. Parking is managed by the Greenwich Parking Services Department. Additional permit parking is leased by the town adjacent to the station in the Greenwich Plaza lot level A; annual permits are \$655.

There are three surface lots near the station. All were in good condition.

Soundview lot has both permit (\$655 annually) and daily parking (\$5). There were 5 open permit spaces the day of the observation in this lot.

Horseneck Lot is Permit only. There were 70 open spaces at this location.

Island Ferry Lot has daily and permit parking. There were 15 daily spaces, 27 permit spaces and 4 spaces open designated for persons with disabilities. This lot is also used for beach parking during the summer months.

The Station is served by NTD WHEELS Central and West Loop buses as well as CTtransit's 311 and I-Bus routes.



Station amenities include trash receptacles, indoor waiting area, restrooms, seating, elevators, bike racks (in surface lots) and taxi stand.



**Key Observations:**  
This lot is well connected to various transit options as it is served by multiple bus routes from CTTransit and Norwalk Transit District. It also allows for easy access to Interstate 95. The station building offers a variety of amenities and is equally accessible for persons with disabilities, as it has elevators and a bridge to cross the tracks. Overall, the lots at this location are in good condition.



# Old Greenwich Metro-North Train Station



## The Old Greenwich Metro-North Train Station is located on:



1 Sound Beach Avenue in Greenwich at 41.0334°N, 73.5678°W. There are 571 total spaces in two lots on either side of the tracks. This total is comprised of 498 permit spaces, 67 daily spaces and 6 spaces for persons with disabilities.

There is limited wayfinding to this location.

There were 10 open daily spaces and 43 open permit parking spaces at the time of the observations.

Under normal conditions, prior to construction, permit fees for parking were \$415 annually. Daily parking is \$5.

Parking is managed by the Greenwich Department of Parking Services.

The station is served by CTtransit Stamford Division's routes 311 and 324.



The lot on the station side had cracked paving and a large sinkhole. The opposite side lot was in good condition and included a very large and full bicycle parking area.

**Key Observations:** The Old Greenwich Train Station was under construction at the time of observation, on June 8th, 2017. According to the Greenwich Director of Parking Services, between 100 and 200 new daily parking spaces are to be added to the station. Many of the spaces are unavailable due to the staging of various construction equipment. The Town of Greenwich is not currently distributing permits for this location due to the ongoing project. Additionally, because this lot was observed in the summer, the park and ride lots throughout Greenwich tend to represent a lot of beach traffic, which does not reflect maximum commuter traffic volume. The most heavily trafficked period is during the school year, when students are back in school and an increased amount of workers begin traveling back into New York City after the summer months. During these more heavily trafficked times, it is common to only see a single-digit number of open spaces available.



# Riverside Metro-North Train Station



## The Riverside Metro-North Station is located at:



1 Riverside Avenue in Greenwich at 41.03174°N, 73.5872°W. There are two lots on either side of the New Haven Mainline tracks.

At the time of the observations there were 10 permit spaces open on the north side of the tracks and nine on the south side of the tracks. There are a total of 319 parking spaces here, a combination of 39 daily and 280 permit spaces. Annual permits are \$415 at this location, daily parking is \$5. The waiting list for permits is 1.5 years long.

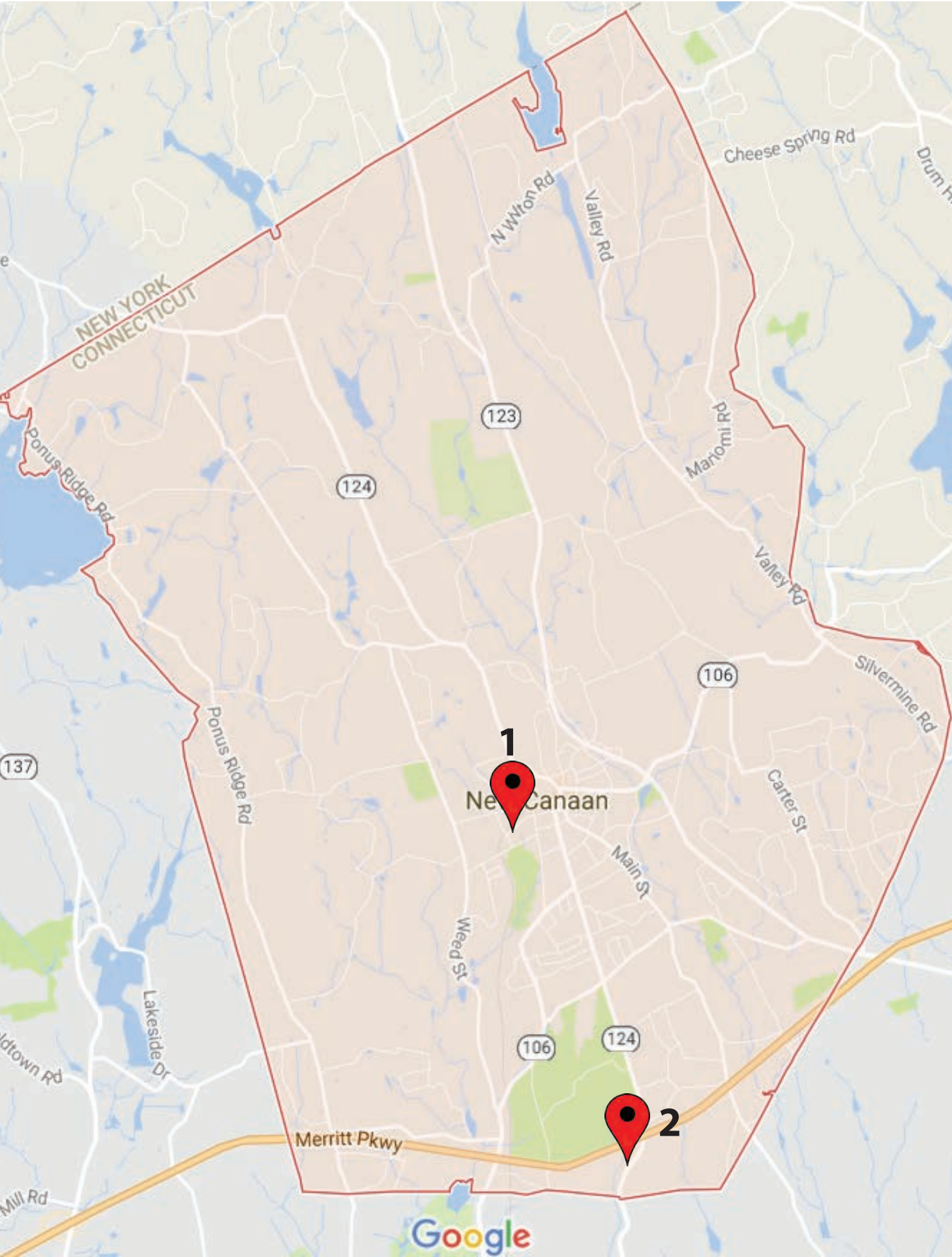
Amenities include seating, bicycle racks, waste receptacles, ticket vending machine, Payphone, soda and newspaper vending machines. The station building was locked.

Parking is managed by the Greenwich Department of Parking Services. There are no direct bus transit connections to this facility.

**Key Observations:** The paving in this lot was cracked in various places, curbing was damaged and restriping is needed. This location is not served by any bus routes.







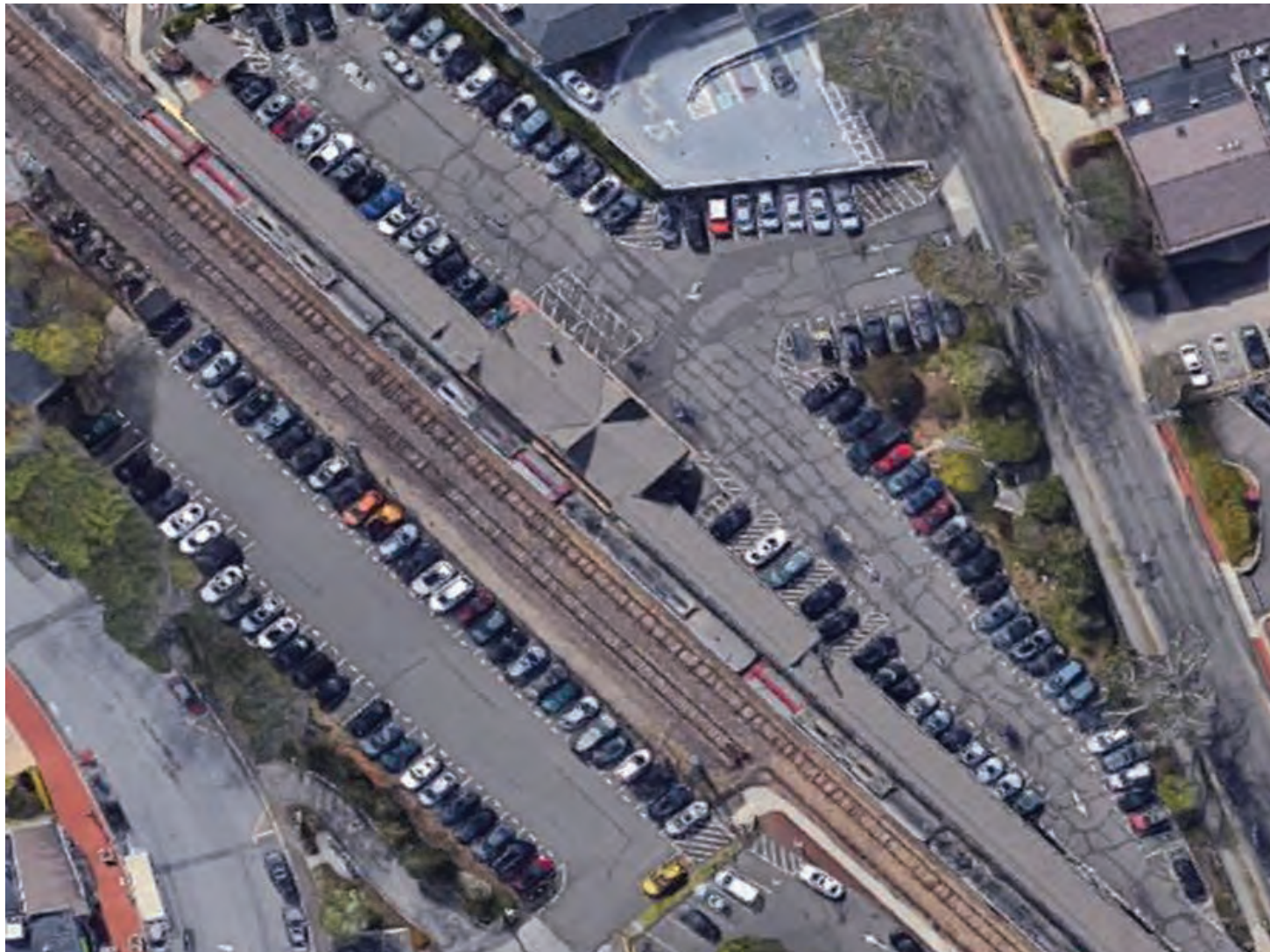
# NEW CANAAN

Train Station Lot Locations

Number	Location	Capacity
1	New Canaan MNRR Station, 198 Elm Street	570
2	Talmadge Hill MNRR Station, 1 Talmadge Hill Road	366



# New Canaan Metro-North Train Station



## The New Canaan Metro North Train station is located:



198 Elm Street in New Canaan at 41.1457°N , 73.4964°W. There are two lots adjacent to the station. These two lots contain 146 “pay-daily” metered spaces and 12 90-minute spaces.

The Lumberyard lot had 17 open permit spaces. There was ponding of water in the lot and the pavement is cracked. Some signage at the lot was damaged.

There were 5 handicapped parking permit spaces / handicapped parking permit required - no time limit.

There is a parking lot about a block south of the tracks that contains permit-only spaces, located on Richmond Hill Road. A fourth lot is referred to as the “lumberyard” lot and also contains permit-only spaces. These two lots contain a total of 418 permit spaces. The New Canaan Train Station is fully maintained by the New Canaan Parking Bureau.

All of the permit spaces are for New Canaan residents only. An annual permit can be purchased for this lot at \$612 and is valid from July 1 through June 30. At the time of this report, the waiting list for a New Canaan Train Station parking permit is currently 6.5-7 years long, with 627 people on the list.



The station building is in good condition and includes a waiting area and restrooms. The site includes bike racks (which were not used by cyclists who were chaining their bikes on the platform), waste receptacles, ticket vending machine, benches, mailbox and a payphone. The station is equipped with an electronic sign messaging system which was not operational.

At the time of observations there was one permit space open in the Pine Street lot. The main lot was overfull, with cars double parked.

At the station lot there are 12-hour daily spaces. The rate is \$5 a day.



**Key Observations:** The large demand for this train station caused some areas close to the station building to experience double parking. Opportunities for additional parking space during peak hours should be explored. The Pine Street lot needs restriping, but the station building and all affiliated lots are otherwise well maintained.



# Talmadge Hill Metro-North Train Station



**The Talmadge Hill Railroad Station lot is located at:**

41.1162°N, 73.4974°W on 281 Talmadge Hill Road in New Canaan. The station has 6 terraced parking lots, 270 permit, 96 daily.



Among the 6 lots there were 57 open permit spaces and one space for persons with disabilities on the date of the observation.

The 270 permit spaces are for New Canaan residents only. An annual permit can be purchased for \$465 and is valid from July 1 through June 30. At the time of this report, the waiting list for a parking permit is currently 1.5 years long, with 226 people on the list. The 96 daily spaces are \$5 a day for daily permit parking.

Talmadge Hill is fully maintained by the New Canaan Parking Bureau.

Permit spaces are free after 1:15 p.m. Monday-Friday. All spaces are free on weekends and holidays. There are 2 parking permit spaces for persons with disabilities.

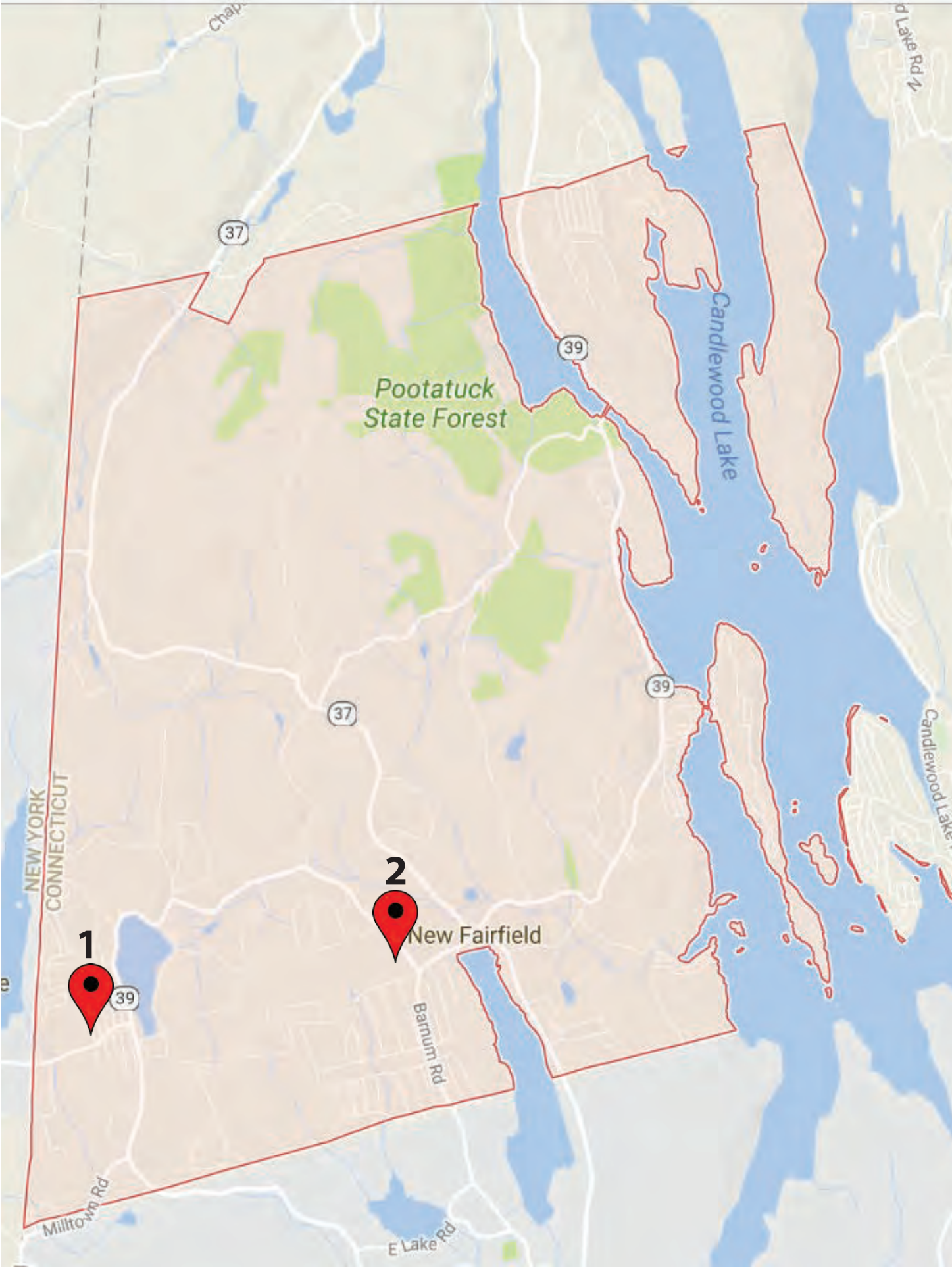


There is a small platform with bus-style shelters present which are in good condition but need cleaning. Amenities include seating, waste receptacles and bike racks.



**Key Observations:** This lot is in need of restriping across some of the different tiers of parking. There is cracked, buckled and potholed pavement that should be repaired. The metal railing in the uppermost lot should be fixed and cleaned up. Separately, given the grade of this location, the layout of this lot functions well, but can pose challenges to persons with disabilities in situations where they may need to park in the higher sections.





# NEW FAIRFIELD

Park and Ride Lot Locations

Number	Location	Capacity
1	Ball Pond Firehouse	12
2	Company A Firehouse	30



# Ball Pond Firehouse Park and Ride Lot



**Ball Pond Firehouse, New Fairfield park and ride lot is located at:**  
 41.4569°N, 73.5284°W Small lot with 12 spots marked off adjacent to Ball Pond Firehouse, 7 Fairfield Drive, New Fairfield.



- There is a small lot with 12 spots marked off adjacent to Ball Pond.
- Directional and lot signage is present, as well as a kiosk with the current New Fairfield - Southeast Shuttle schedule, which HARTransit operates on weekdays.
- There were 8 empty spaces observed.
- There are no specially designated handicapped spaces.
- Signage needs updating.



The lot has lighting and is served by the New Fairfield-Southeast shuttle. The lot is managed by the Town of New Fairfield and there is no charge to park here.



**Key Observations:** The town should consider creating spaces for persons with disabilities using the existing spaces in the lot. The usage rate is low for this lot, which could allow for the transition of spaces without causing complications for existing commuters. The pavement is cracked in places, but the lot is in good condition.



# Company A Firehouse Park and Ride Lot



**The Company A Firehouse is located at:**

41.4646°N, 73.4946°W 302 Ball Pond Road in New Fairfield. This is a 30 space lot located adjacent to the Company A. Firehouse in New Fairfield



It is well marked with directional signage and includes a kiosk with a New Fairfield-South-east Shuttle schedule posted, which HAR-Transit operates on weekdays.

There were 21 empty spaces observed in the 30 space lot.

There are no designated handicapped spaces.

The Lot is managed by the New Fairfield Volunteer Fire Department and there is no charge to park here.

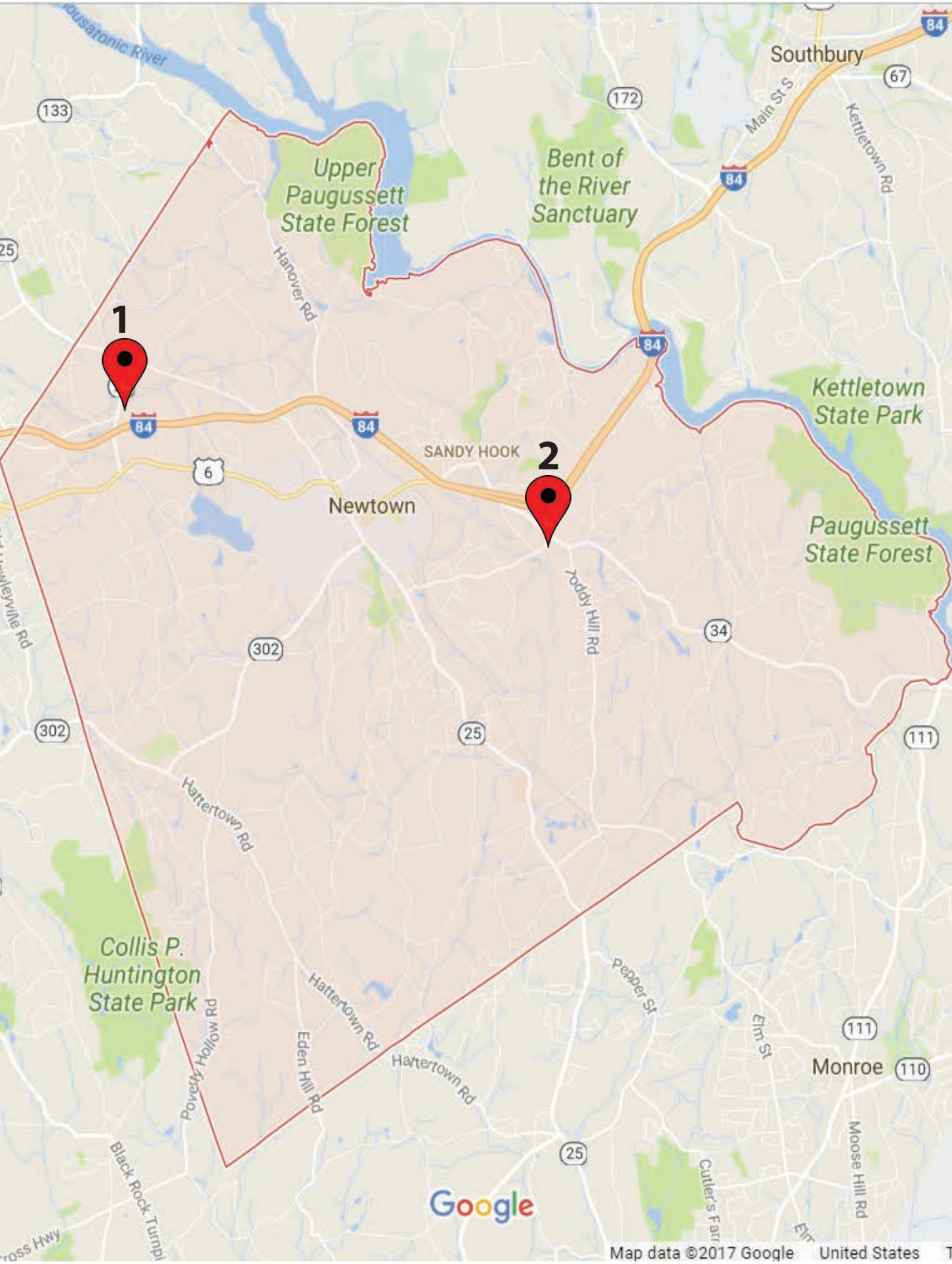


An abandoned car (Solectria) that appeared to have been there for some time was present. Lot has lighting but no other amenities.



**Key Observations:** The addition of spaces for persons with disabilities should be considered. There is an adequate number of spaces to transition some into handicapped spaces without causing complications for existing commuters. Additionally, the abandoned car should be removed from the site. There are several signs that need updating to reflect existing contact information, but the lot is in good condition.





# NEWTOWN

Park and Ride Lot Locations

Number	Location	Capacity
1	I-84 @ Exit 9	53
2	I-84 @ Exit 11	78



# I-84 Exit 9 Park and Ride Lot



I-84 Exit 9, Newtown Park and Ride Lot is located at:



The junction of Hawleyville and Barnabas Roads in Newtown at 41.4282°N, 73.3546°W.

Fence along the eastern boundary of the lot is in good condition but overgrown with vines.

There is no connection to transit at this location.

The lot is managed by CTDOT and there is no charge to park.



There was significant ponding of water around a storm drain located in the travel lane and roughly two thirds of the length of the lot from the intersection. Pavement is cracked and lot needs restriping.



Handicap parking signage in the lot was damaged. The remnants of a pay telephone are present.



**Key Observations:** Redirected drainage could help to reduce the large amounts of icing and ponding. The handicapped sign post should be repaired. The pay phone pedestal should be removed from the site.



# I-84 Exit 11 Park and Ride Lot



I-84 Exit 11, Newtown Park and Ride Lot is located at:



Wasserman Way in Newtown at 41.4087°N, 73.2677°W. There is no charge to park in the CTDOT-managed 78 space lot.

Signage was in good condition and minimal trash was observed. Overhead lighting is installed.

There is no transit service to the facility.

There were 36 empty spaces in the general parking area and 3 of 5 spaces for persons with disabilities were unoccupied.

Pavement was cracked and curbs were broken or absent. The lot needs restriping.

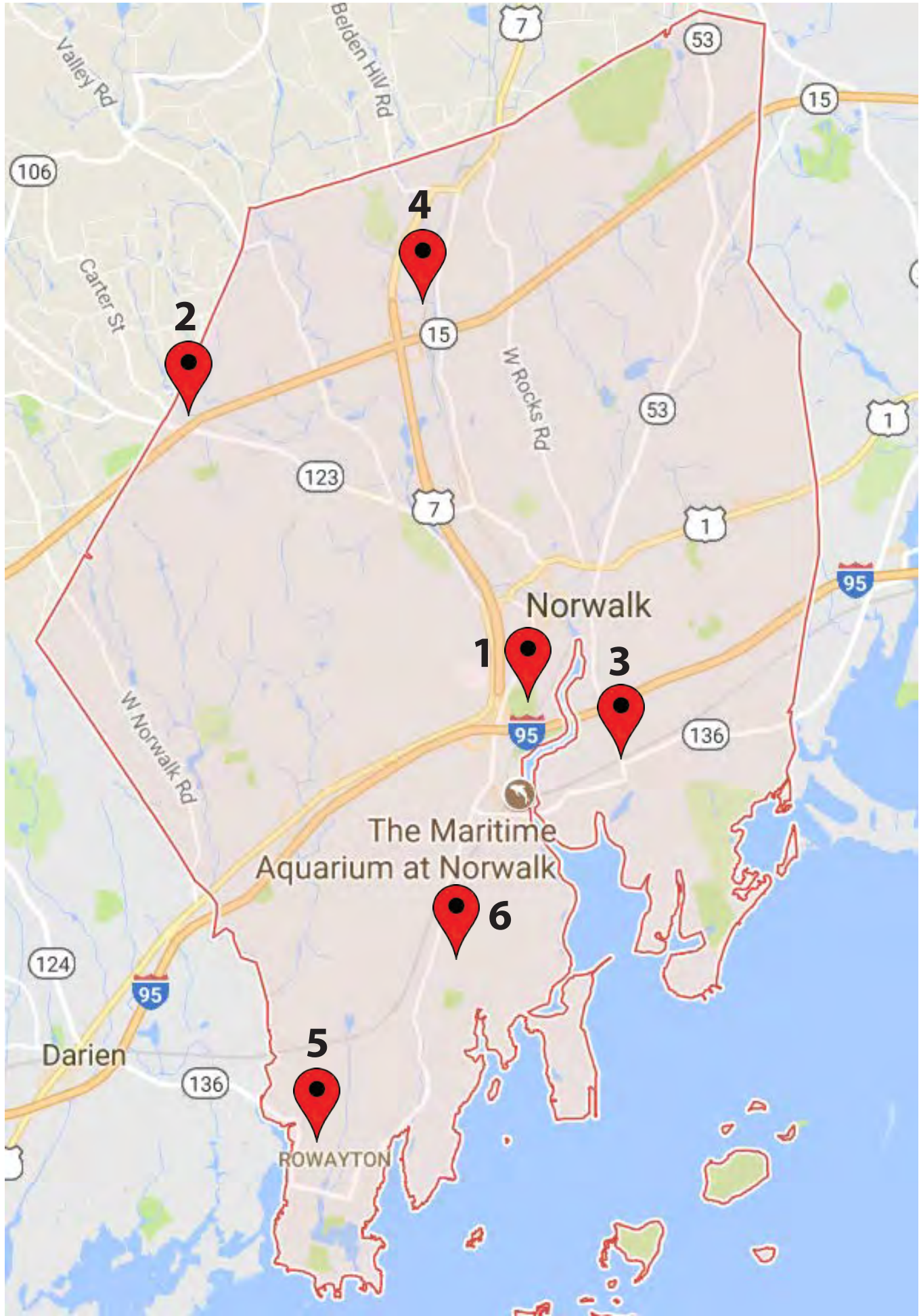


Remnants of a hurricane fence are present in the Northwestern corner as well as the pedestal from a pay telephone.



**Key Observations:** This lot requires restriping and the removal or repair of a fence around its perimeter. The lot is otherwise in good condition, with the exception of missing pieces of curb that should be replaced. The remnant of the pay phone should be removed.





# NORWALK

Park and Ride Lot locations

Number	Location	Capacity
1	I-95 @ Exit 16	35
2	Route 15 @ Exit 38 ( 2 lots)	40

Train Station Lot Locations

Number	Location	Capacity
3	East Norwalk MNRR Station, 213 East Avenue	186
4	Merritt 7 MNRR Station, 1 Glover Avenue	88
5	Rowayton MNRR Station, 299 Rowayton Avenue	330
6	South Norwalk MNRR Station, 29 Monroe Street	941



# East Norwalk Metro-North Train Station



## The East Norwalk MTA station is located at:



213 East Avenue in Norwalk at 41.1040°N, 73.4046°W. Amenities at the station include bike racks, bus-type shelters, waste receptacles and benches, and a TVM. A small building, in the parking lot near the New York Bound platform side of the station, houses a concession and restrooms which are open during morning peak hours.

A large segment of the parking area adjacent to the New Haven bound side of the tracks is currently unavailable to commuters.

There were 30 open permit spaces in the 100 space segment near the intersection of Rowan St. and Osborne Avenue.

The 50 space lot on the New York bound side of the tracks had one open space dedicated to persons with disabilities.

A 26 space lot located across from the station entrance on the corner of Fort Point Road and East Avenue had nine open permit spaces.

The Station is served by NTD's WHEELS Routes 8 and 11.

Parking is managed by the Norwalk Parking Authority. The Mayor and Director of Public Works are ex-officio members. Parking at the station is limited to monthly permit holders only during the week; there is a current waiting list of 136 permits. Permit fees are \$68/month.



**Key Observations:** The two lots on either side of the tracks should be restriped and patched in areas where there are excessive cracks. The third parking lot across the street from the station entrance appeared to be recently striped at the time of observations and requires no further maintenance at this time.



# I-95 Exit 16 Park and Ride Lot



**I-95 Exit 16 Park and Ride Lot,  
Norwalk is located at:**



Hendricks Avenue near its intersection with  
East Avenue at 41.1087°N, 73.4077°W.

Signage needs to be replaced; a sign in the lot  
marked by spray paint was noted as damaged  
in a SWRPA inventory in 2013 and has not  
been repaired.

There was trash on the margin of the lot slop-  
ing up to I-95.

The lot is within walking distance to NTD  
Routes 8 and 11 on East Avenue.

Directional signage to lot off highway is not  
clear.

This is a CTDOT-managed park and ride lot  
and there is no charge to park.

There were 5 open spaces (two for persons  
with disabilities) in the 35 space lot on the date  
of the observation.

The lot has broken curbing, cracked pavement and needs restriping.



**Key Observations:** This small commuter lot would benefit from better wayfinding signage off of I-95.  
The damaged sign marked by spray paint, which has been present in the lot for over five years and  
was referenced in the 2013 SWRPA study, needs to be removed. General pavement maintenance is  
needed as well as restriping for a majority of the spaces. The trash should also be cleaned up along  
the perimeter of the property.



# Merritt 7 Metro-North Station



## The Merrit 7 Metro-North Location is :



1 Glover Avenue at 41.1490°N, 73.4277°W in Norwalk.

The station is served by the Merritt 7 complex shuttle service as well as the NTD - Norwalk Commuter Shuttle.

There are two narrow lots on either side of a small bus shelter style structure adjacent to the platform.

There were 17 open daily parking spaces on the date of the observation in the 86 space lot.

Amenities include bike racks, benches, trash receptacles and schedule information.

The pavement is cracked, buckled and potholed and the lot is not striped in several areas. Storm drains were above the level of the pavement and there are areas of damaged curbing.



The shelter panels are becoming opaque and need replacement.

**Key Observations:** This location requires that the pavement be repaved to address the potholes, damaged curbing and uneven surfaces created by the grade of the lot in comparison to the storm drains. The lot needs to be restriped, as there are areas throughout the lot where there is no striping present and creates issues for commuters seeking to park their cars, while also maintaining their distance relative to adjacent parked cars.



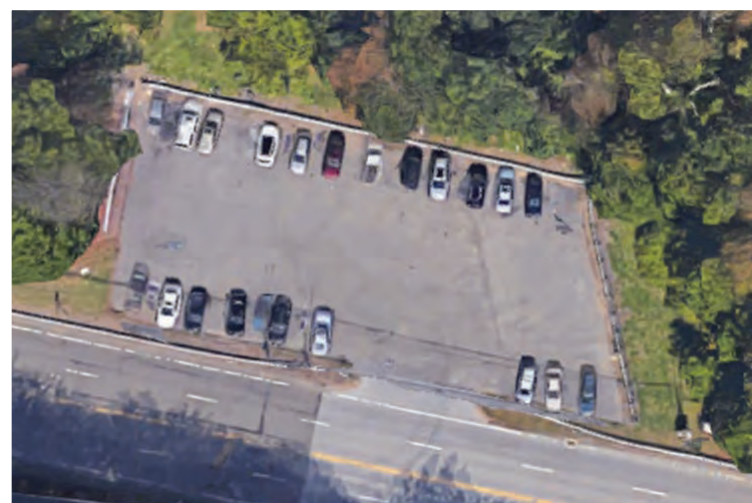
# Route 15 at Exit 38 Park and Ride Lot



Route 15 at Exit 38 park and ride lots are located at:



There are two lots on Route 123 off of exit 38 at 73.4576°N, 41.1338°W. The smaller lot is the more northern of the two.



The second, 28 space lot at 41.1337°N, 73.4555°W had 7 spaces open in the general parking area and one space open designated for persons with disabilities.

The lot is cracked, potholed and needs restriping. Curbs and landscaping are damaged. Signage was faded and support posts are bent.

There is no transit access to these facilities.

7 cars were parked in the smaller 12 space lot. The lot is clean but has no striping; pavement is potholed.



Signage was faded, support posts are bent. A large pile of trash was observed off one corner of the lot. A rusted payphone pedestal was present.



**Key Observations:** This location has a growing number of maintenance issues that should be addressed in the near future. The combination of spaces not being striped and pavement having significant potholes in both of the lots are factors that can contribute to deterring commuters from utilizing this park and ride location. In the smaller of the two lots at this site, the trash along the perimeter and the old payphone stand need to be removed. Both lots also require repaving, restriping and new curbing.



# Rowayton Metro-North Train Station



**The Rowayton train station is located at:**

299 Rowayton Avenue at 1 Belmont Place in Norwalk at 41.0777°N, 73.4443°W. The station building was locked at the time of observations.



There are two lots at this location one on either side of the tracks. The Rowayton Sixth Taxing District operates the parking lots on behalf of the State of Connecticut Department of Transportation under a long-term lease. The eastbound and westbound lots have a total of 330 parking spaces.

Amenities include schedule information, bike racks, waste receptacles, benches and AED.

Daily parking is \$7/day, permits are available for \$30 per month with a wait list of 100 names at time of publication.

There is no connecting bus service at this location.

At the time of observations there were 41 open spaces on the northern lot. There was one open space for general parking and one open space for persons with disabilities on the south side of the tracks.

**Key Observations:** The pavement in this lot is cracked and patched in several areas, especially towards the far end on the north side of the tracks. It should be repaired to prevent further damage. An important point to note is that since the time of observations in June of 2017, this location now has a new automated payment system for daily parking and annual permits. The annual permits are now renewed on a monthly basis. Commuters are billed \$30 per month, rather than one total payment each year, which has contributed to a decrease in the turnover of permits at this location.





# South Norwalk Metro-North Train Station



## The South Norwalk Railroad Station lot is located at:



29 Monroe Street at 1 Chestnut Street in Norwalk at 41.0955°N, 73.4218°W. Parking is managed by the Norwalk Parking Authority. The Mayor and Director of Public Works are ex-officio members.

There is a large parking structure here for permit holders with 706 spaces. There were 140 open spaces at the time of the observation. Permit fees are \$97 per month with a waiting list of about 2 years.

A surface lot located on the southeast side of the tracks had one open EV space, five open permit spaces, two open spaces for persons with disabilities and one 30 minute parking space. The capacity of this lot is 941 spaces. There are 941 spaces available for permit and daily parkers on a first come first serve basis.

The Station building was undergoing renovation at the time of the observation. The facility was well maintained and included a large indoor waiting area, restrooms, concession/cafe, vending machines, seating, passenger shelters on platforms, police emergency call button, and waste receptacles.

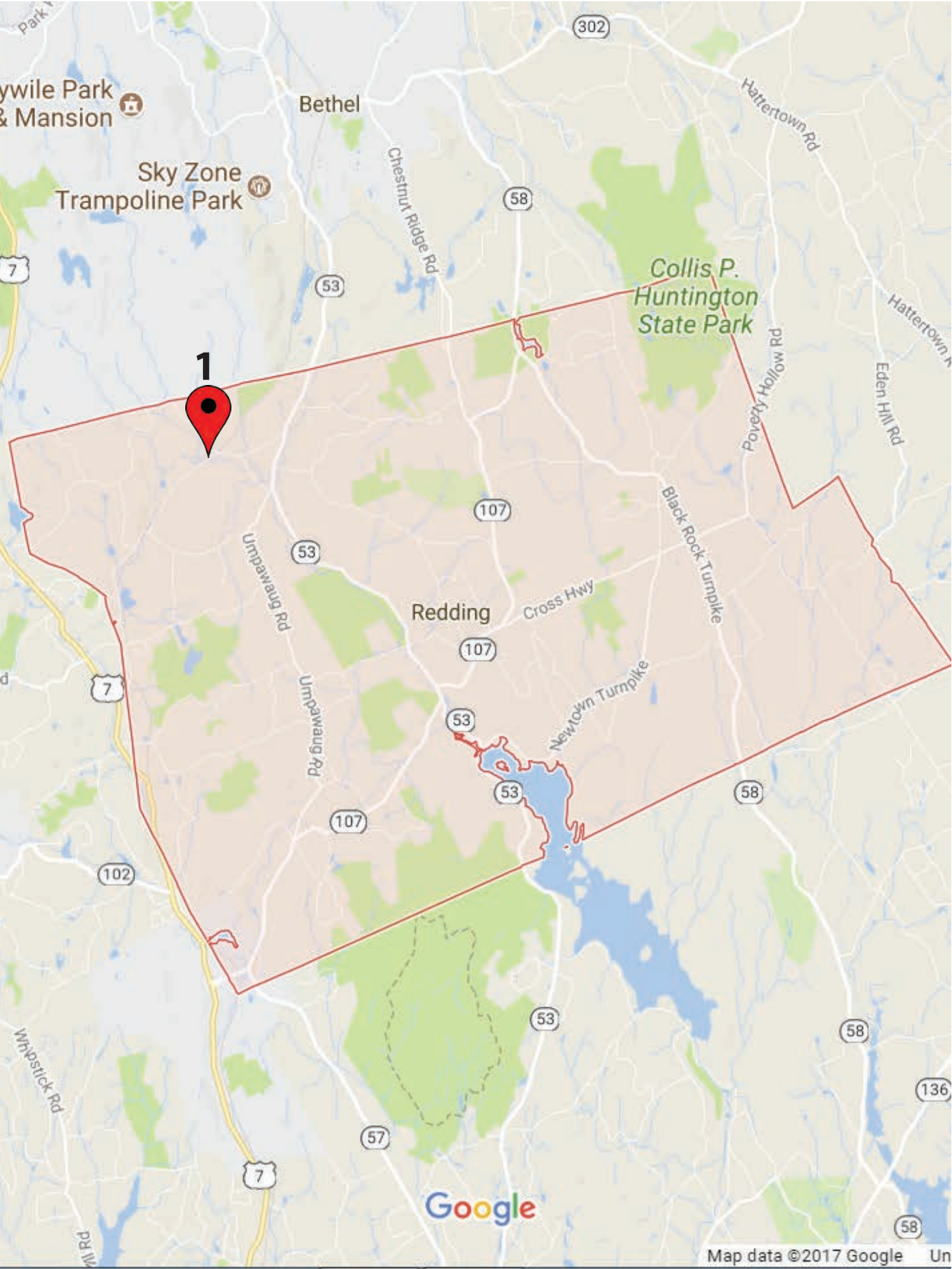


The Station is served by Norwalk Transit District WHEELS Routes 10, 11 and 12. There were electronic message signs with real time bus information installed next to the bus stop. This Metro-North station also serves the Danbury Branch Line.



**Key Observations:** Pavement in the parking lot section of this location was patched in various areas and needs to be repaired. Overall, the lot offers key amenities to commuters. The improved station building will help drive demand for this rail station. The electronic messaging signs offer a convenient way for rail and bus riders to track the status of Norwalk Transit District buses in relation to the station.





# REDDING

Train Station Lot Locations

Number	Location	Capacity
1	West Redding MNRR Station, 3 Long Ridge Road	82



# West Redding Metro-North Train Station



**The West Redding Railroad Station lot is located at:**

41.3251°N, 73.4357°W on Route 53, near the Bethel and Danbury border. The station is on Long Ridge Road near a three way intersection with Simpaug Turnpike and Station Road.



This station includes a high level platform with disabled access and shelter. There are waste receptacles, bike rack, and a public telephone. Rail schedules are posted. The Mark Twain Library maintains a small collection of books here in the shelter for the use of rail riders. There is overhead lighting installed.

There were 5 empty spaces in the daily parking section, 5 empty spaces designated for persons with disabilities and 18 spaces in the annual permit parking area. There are a total of 82 spaces in the lot. There is no connecting transit service here.

Overall policy and oversight of the station is through the First Selectman's office, and daily operations are handled through the Redding Police Department. Most of the basic functions are handled through this office, including annual permits, waiting lists and daily parking fees. Maintenance is conducted by the Town of Redding Public Works Department. Annual permits can be purchased at the Redding Police Department.



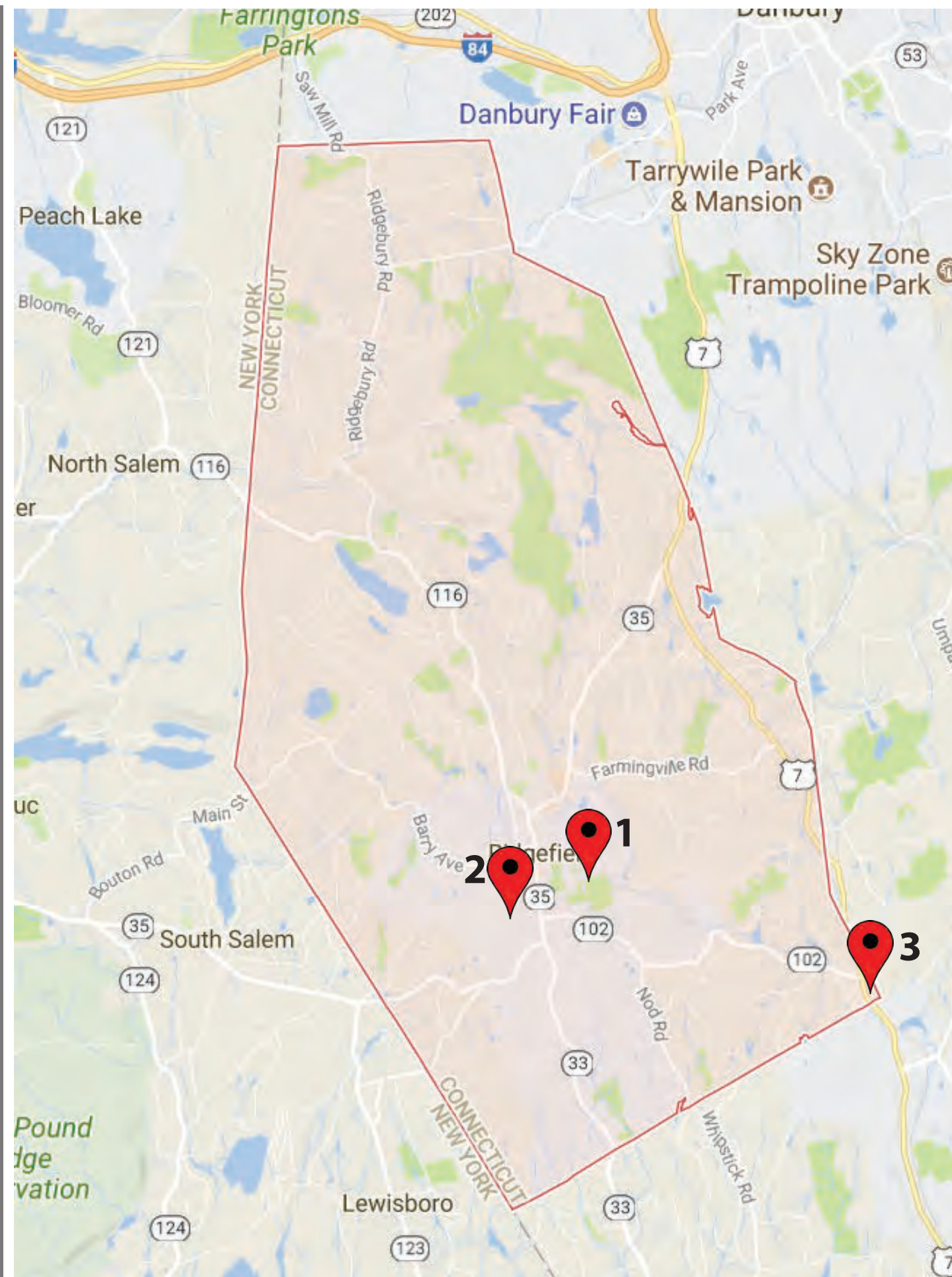
A wooden fence on the perimeter of the lot is in disrepair, a wire hurricane fence on the southeastern edge of the lot is overgrown with vegetation. The lot pavement is cracked. Significant concrete damage was observed around a footing drain in the north western quadrant of the lot. Several signs and sign posts are damaged or missing. The lot was clean and free of trash and debris. The railroad platform and shelter are in good condition.

Permit spaces are free after 1:15 p.m. Monday-Friday. All spaces are free on weekends and holidays. Annual parking permits are \$250/-year and are valid from January 1- December 31. Renewal notices are sent out in November. Fees are prorated for those that purchase later in the year. Day parking is ticketed at \$5 per day by the Redding PD. There was no waiting list for annual permits at the time of this report.



**Key Observations:** The broken fence and the footing drain damage should be addressed to minimize the potential hazard to commuters. The damaged sign posts and fencing should also be repaired moving forward.





# RIDGEFIELD

Park and Ride Lot Locations

Number	Location	Capacity
1	Dog Park, 58 Prospect Ridge Road	30
2	Jesse Lee Church, King Lane	46

Train Station Lot Locations

Number	Location	Capacity
3	Branchville MNRR Station, Routes 35 and 102	161



# Ridgefield Bark Park - Park and Ride Lot



## The Ridgefield Dog Park - Park and Ride Lot is located at:



41.2803°N, 73.4896°W on Prospect Ridge Road in Ridgefield. The parking area is managed by the town Parks and Recreation Department. It is an unpaved multipurpose gravel facility with overhead lighting. There are no amenities.

The lot serves as a parking facility for riders of the HARTransit Ridgefield-Katonah Shuttle and also for users of the town dog park and a nearby baseball field.

Commuters are not currently parking in the designated parking area in the southeast portion of the facility and have chosen to park closer to the road along a stone fence, which was occupied by 13 vehicles. There is no striping or specially designated parking for persons with disabilities here.

The lot was clean and free of trash and debris.



Rear section of lot. (Below)



**Key Observations:** This lot is sloped in a way that allows water and snow to accumulate at the bottom section of the lot, which is where the designated commuter parking is intended to be. The designated area becomes difficult to park in inclement weather and is further away from the pick-up area. Perhaps commuters would better utilize the designated parking area if it were paved or cleared in a way that did not saturate the ground to the point pedestrians avoided walking over it. This lot also poses a challenge for potential commuters with disabilities. The softened ground does not provide a stable footing for people to use mobility devices, as it would likely be difficult to maneuver over the saturated ground in the condition it was seen at the time of observations.



# Branchville Metro-North Railroad Parking



**Branchville Railroad Station, Ridgefield is located at:**



41.2672°N, 73.4411°W directly off of Route 7, near the intersection of Route 7 and Route 102.

The town sells permits based on need, whereby persons that can demonstrate they are daily commuters on the rail system get to apply for permits first.

The 161 space lot has 140 spaces dedicated to annual permits, which sell for \$250 per year. Ten spaces are for daily parking at \$5 per space. Eight spaces in the lot are dedicated for use by bakery patrons, there are two dedicated for EV charging.

Overall lot program and policy is set by the Ridgefield Board of Selectman. Day to day operations are managed by the Parking Authority through the Town Human Resources office.

The Parking Authority handles matters such as permitting and parking enforcement.

Daily maintenance of the lot is coordinated through the Parks Department, with more significant work completed by the Town Highway Department.

The Whistle Stop Bakery is responsible for building maintenance.

Lot security is provided by the Ridgefield Police Department.

There were three empty spaces in the daily parking area, four empty spaces dedicated for persons with disabilities, five empty spaces for the Whistle Stop. There is no waiting list.

The Danbury Route 7 Link bus route stops adjacent to the facility on Route 7.

The historic 1905 Branchville Station building is occupied by the Whistle Stop Bakery. The facility has benches, schedule information for MTA trains and waste receptacles.



The pavement in the lot is cracked and potholed. Signage on the platform is faded and needs replacement. The station building and signage on the structure is in need of repainting. There was some concrete damage to the platform structure.



**Key Observations:** It is clear this lot approaches maximum capacity during peak hours, as was seen during observations. The repeated use has caused some wear and tear to the lot. The maintenance of the station building, lot signage and pavement should be addressed moving forward.



# Jesse Lee Church Park and Ride Lot



**The Jesse Lee Memorial Methodist Church Park and Ride is located at:**



The rear of Jesse Lee Church on the corner of King Lane and Main Street, Ridgefield at 41.2756°N, 73.4998°W.

- The lot was in good condition and was clear of trash and debris.
- There were 3 spaces in the 46 space lot which is served by the HARtransit's Ridgefield-Katonah Shuttle.
- Signage for the lot is present with pathfinder signage on Route 35 (Main Street). All signage was in good condition.
- The free parking lot is managed by Jesse Lee Church and is leased by CTDOT through an agreement between HARtransit and the church.

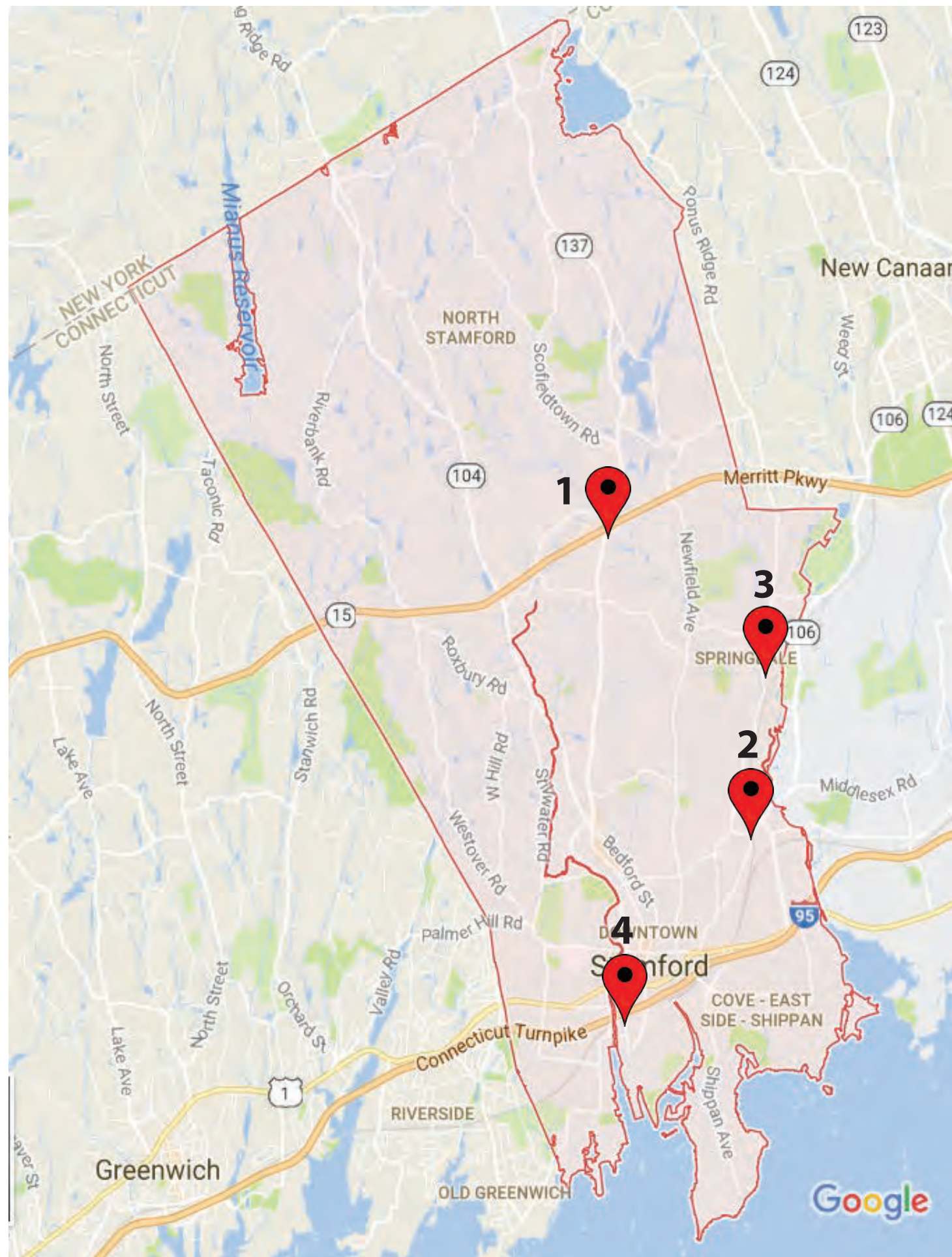


The lot is lighted. There are no designated spaces for persons with disabilities or amenities.



**Key Observations:** This lot was in good condition at the time of observation. The pavement shows no signs of damage, the signs are up to date and the lot is clean. The addition of several parking spaces for persons with disabilities should be explored.





# STAMFORD

Park and Ride Lot locations

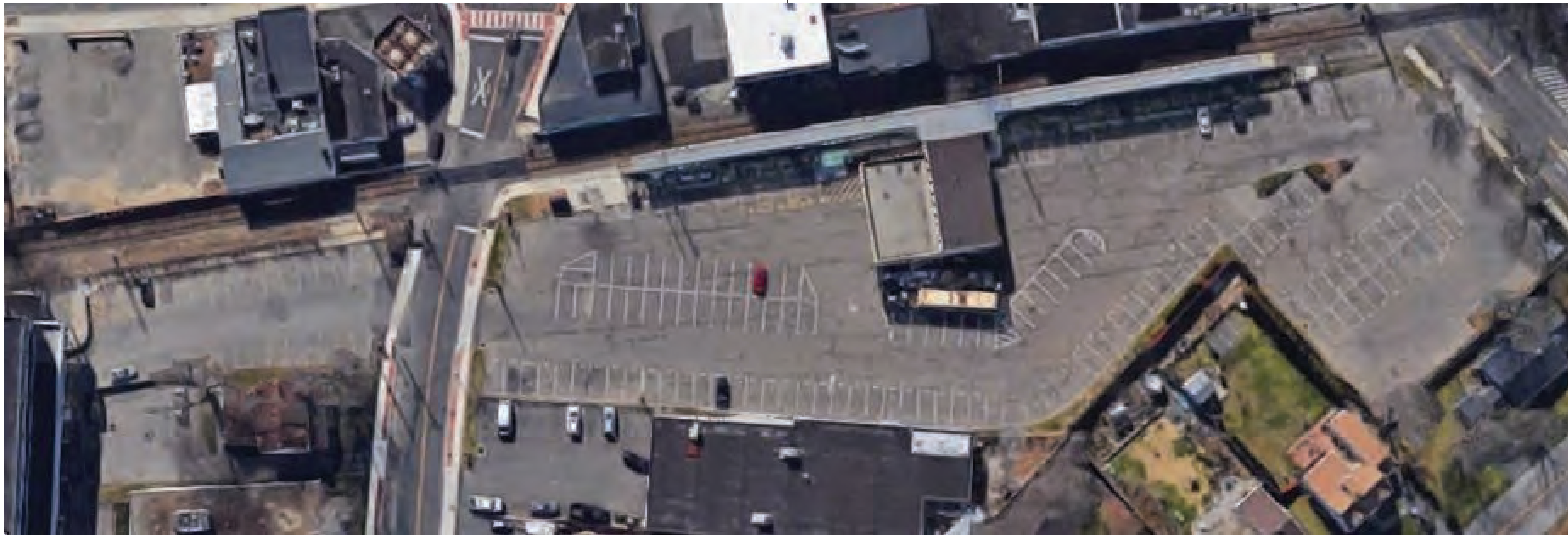
Number	Location	Capacity
1	Route 15 @ Exit 35	55

Train Station Lot Locations

Number	Location	Capacity
2	Glenbrook MNRR Station, 2 Crescent Street	156
3	Springdale MNRR Station, 886 Hope Street	211
4	Stamford Transportation Center, 490 Washington Blvd.	1583



# Glenbrook Metro North Train Station



**The Glenbrook Metro-North train Station is located at:**

41.0710°N, 73.5199°W 2 on Crescent Street and 502 Glenbrook Road in Stamford.



Parking is managed by the Stamford Department of Traffic, Transportation and Parking.

Daily parking is \$3 per day. Permit fees are \$45/month for residents, \$90/month for non-residents. There is a waiting list for this lot but precise numbers and duration were unavailable.

The station is served by CTtransit Routes 328 and 334.

There are 156 spaces in this lot. On the date of observations there were 37 open permit spaces and three open spaces designated for persons with disabilities.

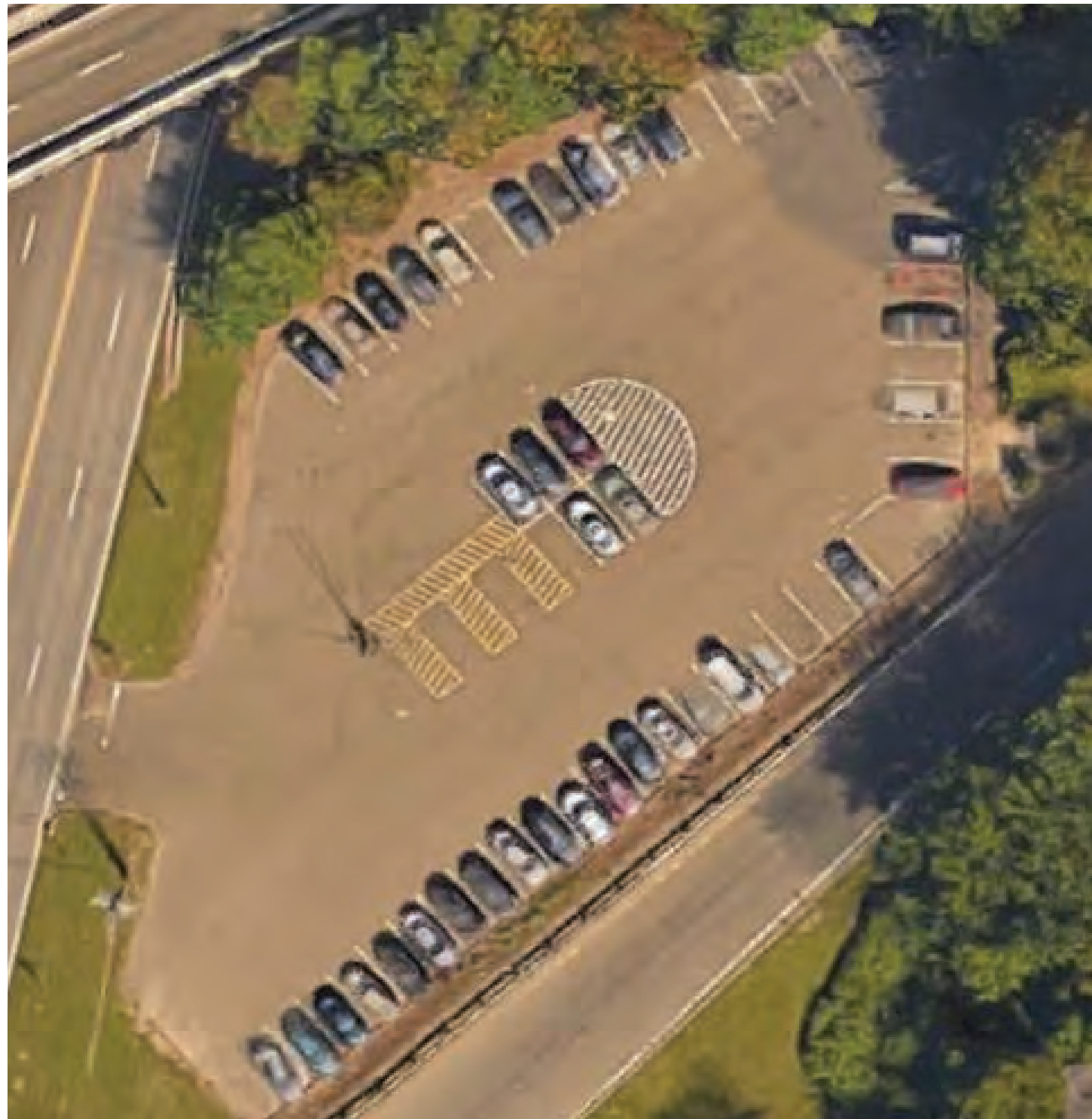
Amenities include bike racks, seating, covered waiting areas and waste receptacles.



**Key Observations:** The lot surface was cracked with weeds popping through from below and should be repaved. The striping appeared to be freshly painted. Spaces were labeled clearly for permit holders. Signage inside of the lot was in good condition.



## Route 15 at Exit 35 Park and Ride Lot



Route 15 at Exit 35 park and ride lot is located at:



High Ridge Road at its intersection with the Merritt Parkway at 41.1116N, 73.5462W in Stamford.

There were 18 spaces in the general parking area and 3 empty spaces designated for persons with disabilities in the 55 space facility.

The lot is served by CTtransit Route 331.

The lot is managed by CTDOT and there is no fee to park.

The lot has damaged curbing and cracked pavement. Debris was observed on its margins of the lot including broken tile and bent u channel posts. There are no amenities other than overhead lighting.



**Key Observations:** This lot should be restriped, as some areas have faded over time.



# Springdale Metro-North Train Station



## The Springdale Metro-North Station is located at:



886 Hope Street in Stamford at 41.0888°N, 73.5178°W. There are 211 spaces in this lot.

At the time of the field visit there was one open daily parking space, 6 open spaces designated for persons with disabilities and 52 open permit spaces.

Parking is managed by the Stamford Department of Traffic, Transportation and Parking. Daily parking is \$3 per day. Permit fees are \$45/month for residents, \$90/month for non-residents. There is a waiting list but exact numbers were not available at the time of publication.

The location is served by CTtransit Route 334.



Amenities include bike racks, seating, covered waiting areas and waste receptacles.



**Key Observations:** The pavement was cracked and weedy along areas of runoff and storm drains. The striping of spaces makes it easy to distinguish between permit and daily spaces. This lot is easily accessible for persons with disabilities as the location is flat and the platform is not far above ground level. Accessible ramps and platforms are present.



# Stamford Transportation Center



## Stamford Transportation Center is located at:



490 Washington Boulevard in Stamford at 41.0469°N, 73.5421°W. This station is the second busiest station stop on the New Haven Line.

There is a planned project to replace the current Stamford Parking Garage. The current facility has 1437 permit/daily spaces and 42 spaces dedicated to persons with disabilities.

The new parking facilities will contain a minimum of 1,000 parking spaces for commuter parking. Station Place will be upgraded to include better pedestrian and bicyclist access. After the original garage has been replaced, commuter parking for more than 2,200 cars will be provided.

A surface lot is located nearby on South State Street with 102 permit and 2 ADA spaces. The lot is fenced but in poor condition with potholed and cracked pavement, damaged and worn signage, rusted bollards and minimal/worn striping. There were two open spaces designated for persons with disabilities and 31 open permit spaces. Parking Fees are \$70 per month. There is no waiting list for permits at this lot.

CTDOT owns and manages this facility. The Parking Structure is operated by Fusco Management Co.

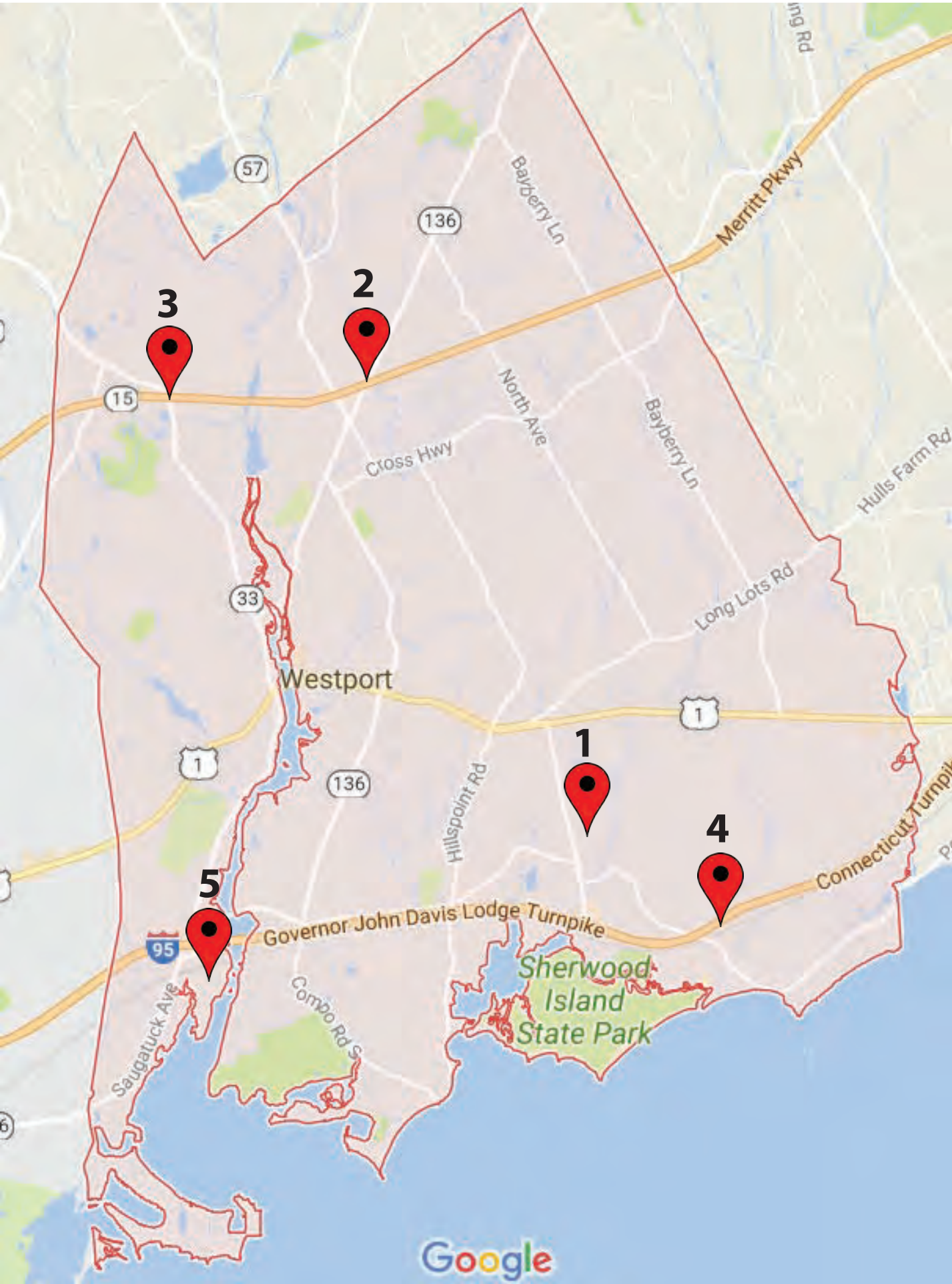
At the time of observations there were 62 daily spaces open at the parking structure. Parking Fees are \$3 per day and \$70 per month. There is a waiting list of 180 names (about 9 months to a year). Station amenities include covered waiting areas, seating, ticket agent, retail shops, taxi services, bus transit information, MTA police substation and car rentals.

**Key Observations:** The State of Connecticut Department of Transportation was in the process of addressing several of the key concerns at this lot when observations took place. Several construction projects related to increasing parking capacity and access to the facility were underway. These projects obstructed some parking and access to the entrance and exit of the Transportation Center. However, a few key areas that need improvement are related to the South State Street surface lot. The pavement in this lot needs to be repaired to address the various cracks and potholes. These issues block several spaces, causing commuters to park elsewhere in the lot. The maintenance issues could be driving the utilization of this surface lot. With regard to the main Transportation Center location, the construction projects should improve the long term accessibility of the station for all types of commuters. The increased parking will draw more commuters to the location, which will emphasize the need for routine maintenance and upkeep at the Transportation Center platform, the parking garage and the neighboring surface lot in order to account for the continued wear and tear.

There are multiple transit connections here:

- The parking facilities are adjacent to the CT TRANSIT Stamford Division main transfer station, where 18 local fixed routes meet as well as regional buses to Norwalk and the I-Bus to White Plains.
- During the peak period there are over 400 trips made to/from the STC by private shuttle buses to over 60 destinations within a 2 mile radius.
- Amtrak's Vermonter, Acela Express and Northeast Regional service have a stop here.
- Building and Land Technology provides the free Harbor Point Trolley downtown circulator route which serves the Station.
- Greyhound Bus operates a terminal for intercity bus services at 30 Station Place just south of the parking structure.
- Zipcars are available at the nearby privately operated Gateway Garage on Pulaski St. and Washington Blvd.





# WESTPORT

Park and Ride Lot Locations

Number	Location	Capacity
1	I-95 @ Exit 18	87
2	Route 15 @ Exit 41	99
3	Route 15 @ Exit 42	43

Train Station Lot locations

Number	Location	Capacity
4	Greens Farms MNRR Station, 2 Post Office lane	481
5	Saugatuck MNRR Station, 1 Railroad Place	1356



# Greens Farms Metro-North Train Station



## The Greens Farms station is located at:



2 Post Office Lane in Westport at 41.1223°N, 73.3152°W. The station building is in good condition. Amenities include vending machines, bike racks, benches and waste receptacles. There is a Post Office located in Lot 2.

There are three lots that serve this facility with a total of 481 spaces.

Lot 1 New Creek Rd. – There were 3 open spaces for daily parking and 44 open permit parking spaces in this 269 space lot.

Lot 2 (New York trackside) – one open permit space in this 156 space lot.

Lot 3 (New Haven trackside) – no open spaces in this 56 space lot.

Westport Transit's G1 and G2 shuttles (operated by Norwalk Transit District) serve this station.

There is a wait list for permits of just under two years. The Town of Westport raised their daily parking rate in April of 2011 from \$4 to \$5 dollars, and the annual permit fee from \$225 to \$325.



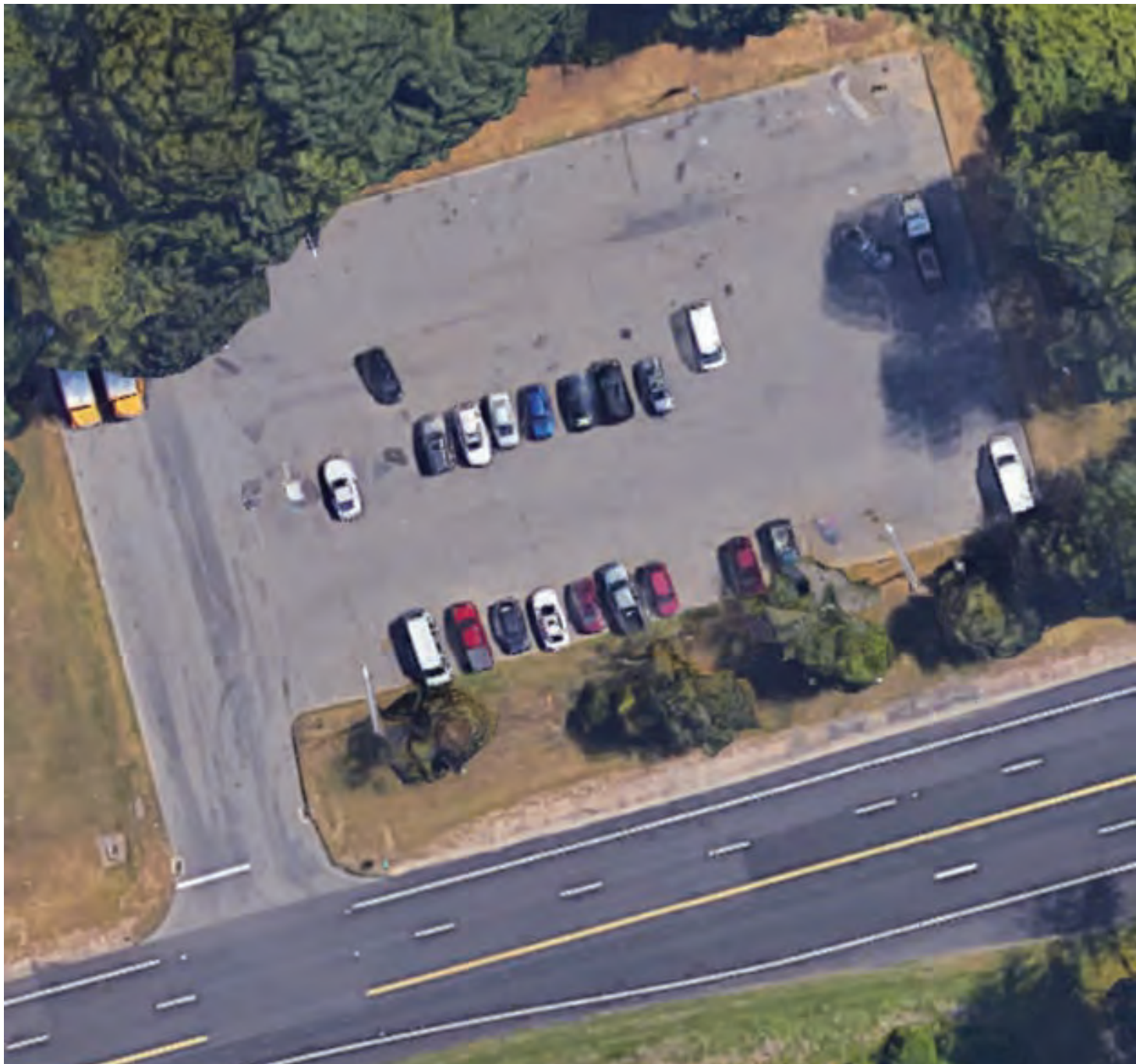
Parking policies are set by the governing body of the Town of Westport Office of the First Selectman while the Westport Police Department manages day to day parking operations. The police department's day to day responsibilities include managing and maintaining the facilities, parking lots, ticketing, and rail parking permits. The majority of maintenance work is performed by private contractors.



**Key Observations:** The signage for this station helps to easily identify the different lots as well as the hours for permit parking. The pavement near the station building is patched and areas are slightly cracked, but overall the lots are in good condition and do not seem to require significant maintenance.



# I-95 Exit 18 Park and Ride Lot



**I-95 Exit 18 Park and Ride Lot, Westport is located:**

on the Sherwood Island Connector just north of its intersection with Greens Farms Road in Westport at 41.1291°N, 73.3328°W.



- Striping in the lot is absent, which is consistent with observations by SWRPA dating back to 2005.
- Signage in the lot is damaged.
- Storm drains in the lot are significantly depressed below the level of the pavement.
- A hot water heater was dumped adjacent to the Southeast Corner of the lot.

57 general spaces and 1 space for persons with disabilities were available in the 87 space lot. There is no transit access here. There is no charge to park in this CTDOT managed lot.



**Key Observations:** Overall, this lot seems to require an increased level of maintenance work to address the key findings mentioned in this section. Striping has been absent in this lot since at least 2005. This lot needs to be properly striped. Signage should be repaired and the noted water heater needs to be removed.



## Route 15 at Exit 41 Park and Ride Lot



Route 15 at Exit 41 park and ride lot is located at:



41.1634°N, 73.3742°W on Route 33 and Sunny Lane in Westport off exit 41 of the Merritt Parkway.

There were 72 empty spaces in the general parking area of the 99 space lot.

There were 4 open spaces designated for persons with disabilities.

There was minimal trash and debris in the lot.



**Key Observations:** This park and ride lot was in good condition. The pavement seems relatively new and the striping is still bright.



# Route 15 at Exit 42 Park and Ride Lot



Route 15 at Exit 42 park and ride lot is located at:



Route 57 opposite the intersection with Big Pines Road in Westport. It is just off exit 42 of the Merritt Parkway at 41.1645°N, 73.3590°W.

There were 15 open spaces in the general parking area and two spaces designated for persons with disabilities in this 43 space lot.

There were trash and broken glass present in the lot.



A vintage phone receptacle was present with no payphone surrounded by rusted bollards, as also noted in the 2013 SWRPA observations.



An abandoned car was parked in the lot which had been tagged by the state police.

**Key Observations:** This lot requires restriping in certain areas, especially by the handicapped spaces. The paving was cracked and curbing was damaged. Also, the payphone stand still needs to be removed. The abandoned car should be removed as well to limit potential health and safety conflicts.



# Saugatuck Metro-North Train Station



## The Saugatuck Metro-North Station is located at:



1 Railroad Place at 41.1190°N, 73.3704°W in Westport. There are eight parking areas that serve the facility. There are a total of 1356 spaces in eight lots around the station.

Lot 1 (Park Street) – There were 2 permit spaces and 1 EV parking space open in the 324 space lot. The lot was in overall good condition.

Lot 2 (NY trackside) – There were 4 empty spaces for persons with disabilities, 1 spot for railroad use and 14 one hour spaces open in this 145 space lot. Pavement in this lot is cracked and needs restriping.

Lot 3 (NH trackside) -- Largest lot among those at this station at 468 spaces, there were 23 permit spaces, 5 spaces for persons with disabilities and 7 spaces dedicated to the car rental facility.

Lot 4 (Saugatuck Ave NH trackside) – 20 daily spaces were open in this 104 space lot.

Lot 5 (Riverside Ave East) – This 60 space lot had 2 open permit spaces. Pavement is cracked and the lot needs restriping.

Lot 6 (Riverside Ave West) – There were 8 hourly spaces open here in this 16 space lot. The base of the streetlight near the entrance is damaged.

Lot 7 (Franklin St.) – Half of this recently expanded 87 space lot was newly repaved, the remaining half had cracked pavement. There were 53 open permit spaces.

Lot 8 (Saugatuck Ave NY Trackside) – There were 4 daily spaces open in this 152 space lot. An adjacent unimproved parking lot was available for additional parking.

The Town of Westport raised their daily parking rate in April of 2011 from \$4 to \$5 dollars, and the annual permit fee from \$225 to \$325. Currently, there is a wait list of just under 2 years for a parking permit.



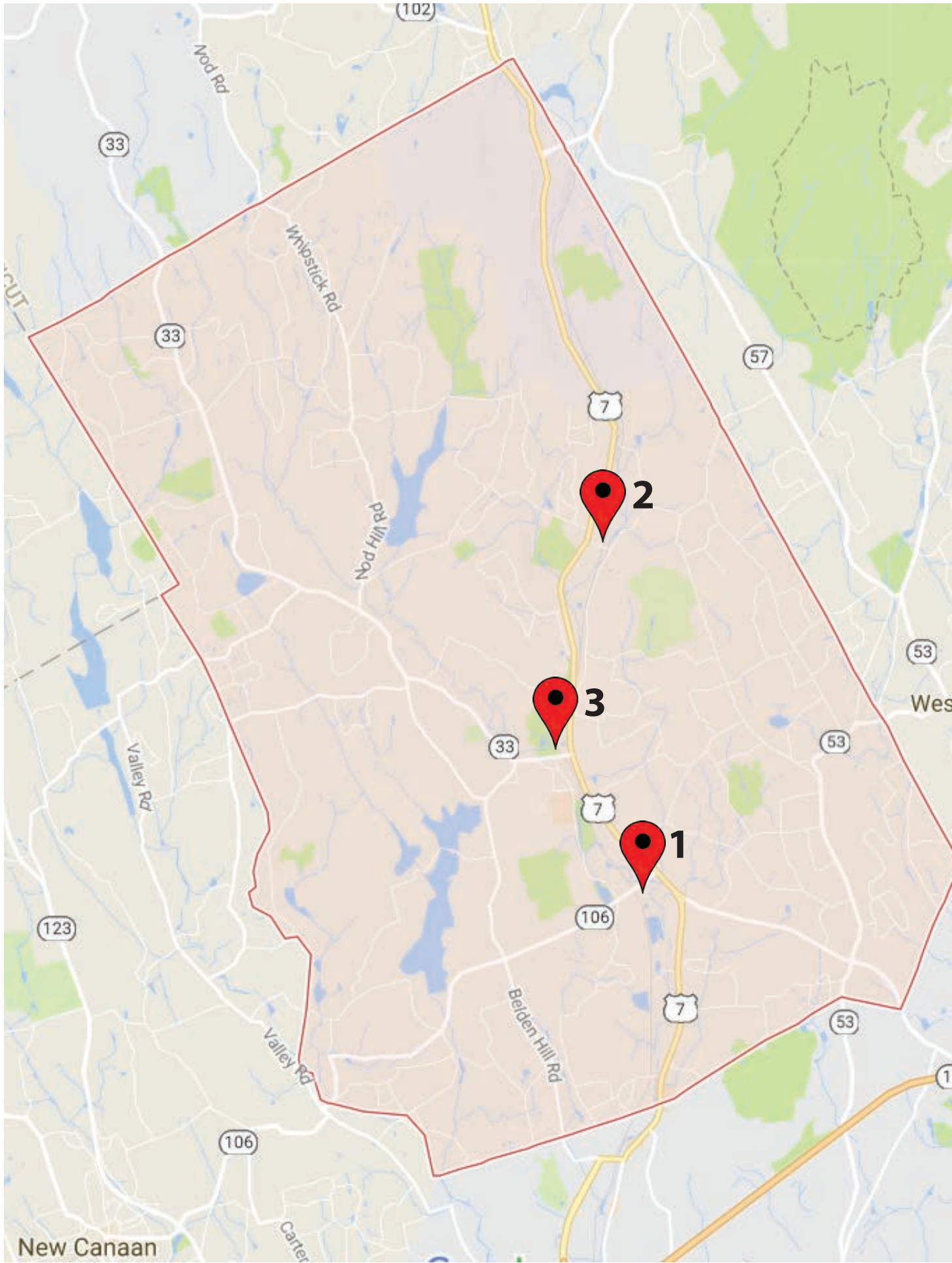
Parking policies are set by the governing body of the Town of Westport Office of the First Selectman while the Westport Police Department manages day to day parking operations. The police department's day to day responsibilities include managing and maintaining the facilities, parking lots, ticketing, and rail parking permits. The majority of maintenance work is performed by private contractors.



The station building is in good condition. Amenities include lending library, restrooms, vending machine, Avis car rental, Donut shop, benches, waste receptacles, elevator from street level, taxi stand and bicycle parking. The rail station facility is served by Westport Transit's/ Norwalk Transit District's S1, S2, S3 and S4 commuter shuttles as well as the Imperial Avenue commuter lot shuttle.

**Key Observations:** This lot could benefit from resurfacing and needs to be restriped. The signage displaying the hours for permit use and the distinction between the various lots offers a necessary convenience to commuters.





# WILTON

### Park and Ride Lot Locations

Number	Location	Capacity
1	Route 7 @ Wolfpit Road	52

### Train Station Lot Locations

Number	Location	Capacity
2	Cannondale MNRR Station, 22 Cannon Road	141
3	Wilton MNRR Station, 7 Station Road	251



# Cannondale Metro-North Train Station



## The Cannondale Station is located at:



41.2175°N, 73.4266°W at 22 Cannon Road in Wilton near Route 7. There is no fee for parking in this 141 space lot. All maintenance and security is managed by CTDOT. The station is served by the Danbury-Norwalk Route 7 Link.

The station building is unoccupied but included a heated waiting area. A separate building houses bathrooms. Structures are in good condition, but the main structure needs repainting.

There is no directional signage to the station from Route 7.

The lot was free from trash.



A bike rack (empty) and outdoor seating area were installed between the two structures.



There was one empty space in the lot in the general parking area (an additional space is striped but blocked by a utility pole) and 3 open spaces designated for persons with disabilities.



**Key Observations:** The lot is in poor condition with cracked and potholed pavement and exposed rebar from damaged curb stops. Curbing and islands are damaged and the lot needs restriping. This lot could benefit from resurfacing and needs to be restriped. The signage displaying the hours for permit use and the distinction between the various lots offers a necessary convenience to commuters.



# Wilton Metro-North Train Station



**Wilton Metro-North train station park and ride lot is located:**



off of Route 7 at 41.1961 °N, 73.4321°W near its intersection with Route 33 in Wilton.

The large L-shaped parking area has a capacity for 211 cars; there were 6 spaces in the general parking area and 6 open spaces designated for persons with disabilities.

There is no fee to park at this station. The train station is close, although not easily accessible to, nearby HARtransit operated Route 7 Link and Norwalk Transit District's 4 Route. A pedestrian access path between the station and Wilton Center is planned and will allow for easy connections to the two bus routes.

The building is in excellent condition with restrooms and a climate controlled interior.



All Maintenance and Security in this 251 space lot is managed by CTDOT.



**Key Observations:** The station area was clean and free of trash. Pavement was cracked and the lot needs restriping. Additionally, schedule information is posted and the area includes waste receptacles and newspaper vending machines. A shelter with a ticketed vending machine is installed adjacent to the station building. Overall, this lot offers several convenient amenities to commuters.



## Route 7 Wolfpit Road Park and Ride Lot



### The Wolfpit Road park and ride lot is located at:



41.1836°N, 73.4196°W with an entrance off Route 7 just south of its intersection with Wolfpit Road. The lot is near an entrance to the Norwalk River Valley Trail.

The lot has overhead lighting.

Signage in the lot was damaged.

A metal guardrail in the southwestern quadrant of the lot is damaged.

The lot had light trash present during observations.

The HARtransit-operated Route 7 Link and Norwalk Transit District's 4 Route can be accessed from this location.



There were 37 open spaces in the general parking area and 2 spaces for persons with disabilities in this 52 space lot.



**Key Observations:** The pavement in this lot is in poor condition and should be resurfaced. It may be worthwhile to address drainage patterns in the lot as the relatively flat grade of the location seems to have caused the cracking throughout the location. The lot needs to be restriped for all spaces and the signage and guardrail should be repaired.



Town	Station or Lot Name		Parking Space Distribution												Parking Permits					Type of Transit Connections Available*	Type of Amenities	Managing Authority(ies) of Lot	Latitude & Longitude Coordinates	Date Sampled	
			Daily			Permit Only			Handicap			Total Utilization			Cost of Parking			Permit Distribution							
			Empty	Capacity	Capacity as % of Total	Empty	Capacity	Capacity as % of Total	Empty	Capacity	Capacity as % of Total	*Total Lot Capacity	Total Empty	In Use	% Used	Daily	Monthly	Annual	# of Permits Issued						Length of Wait List
Bethel	Bethel Train Station	Danbury Branch Line	0	26	13.20%	41	165	83.76%	4	6	3.05%	197	45	152	77.16%	(SSPD)*	n/a	\$ 250.00	250	50 people	R, B	Sh, Pr, Bu, Se, Ph	Bethel DPW	41.3176 N, 73.4173 W	1/11/2017
Danbury	Danbury Train Station	Danbury Branch Line	6	12	8.22%	81	129	88.36%	4	5	3.42%	146	91	55	37.67%	\$ 9.00	n/a	\$ 250.00	139	no wait	R, B	Bu, Pr, T, Se, Br	Danbury Parking Authority, DPW	41.3961 N, 73.4488 W	12/1/2016
	Federal Rd. Park and Ride	---	78	110	95.65%	n/a	n/a	n/a	5	5	4.35%	115	83	32	27.83%	n/a	n/a	n/a	n/a	n/a	B	Sh	CTDOT	41.4229 N, 73.4195 W	1/11/2017
	I-84 @ Exit 1 Park and Ride	---	126	155	96.88%	n/a	n/a	n/a	5	5	3.13%	160	131	29	18.13%	n/a	n/a	n/a	n/a	n/a	B	Sh	CTDOT	41.3916 N, 73.5366 W	12/1/2016
	I-84 @ Exit 2 Park and Ride	---	42	104	92.86%	n/a	n/a	n/a	8	8	7.14%	112	50	62	55.36%	n/a	n/a	n/a	n/a	n/a	B	Sh	CTDOT	41.3915 N, 73.5203 W	12/1/2016
	Miry Brook Park and Ride	---	105	164	95.91%	n/a	n/a	n/a	7	7	4.09%	171	112	59	34.50%	n/a	n/a	n/a	n/a	n/a	B	none	CTDOT	41.3700 N, 73.4764 W	12/1/2016
	I-84 @ Segar St. Park and Ride	---	40	45	100.00%	n/a	n/a	n/a	n/a	n/a	n/a	45	40	5	11.11%	n/a	n/a	n/a	n/a	n/a	B	none	CTDOT	41.3856 N, 73.4753 W	12/1/2016
	White Turkey Rd. Ext. Park and Ride	---	36	72	96.00%	n/a	n/a	n/a	2	3	4.00%	75	38	37	49.33%	n/a	n/a	n/a	n/a	n/a	B	none	CTDOT	41.4285 N, 73.4112 W	1/11/2017
Darien	Darien Train Station	New Haven Main Line	0	330	51.72%	102	296	46.39%	0	12	1.88%	638	102	536	84.01%	\$ 4.00	\$ 65.00	\$ 400.00	735	6 years	R, B	Pr, Se, T, Bu	Darien Parking Authority, DPW, Plan&Zone	41.0769 N, 73.4718 W	5/24/2017
	Noroton Heights Train Station	New Haven Main Line	40	320	41.83%	17	440	57.52%	4	5	0.65%	765	61	704	92.03%	\$ 4.00	\$ 65.00	\$ 400.00	868	7.5 years	R, B	T, Se, Sh, Br, Bu	Darien Parking Authority, DPW, Plan&Zone	41.0687 N, 73.4970 W	5/24/2017
Greenwich	Cos Cob Train Station	New Haven Main Line	2	53	8.67%	50	555	90.83%	1	3	0.49%	611	53	558	91.33%	\$ 5.00	n/a	\$ 415.00	835	1.5 years	R	(ALL)	Greenwich Department of Parking Services	41.0299 N, 73.6000 W	6/8/2017
	Greenwich Train Station	New Haven Main Line	15	285	25.51%	102	823	73.68%	4	9	0.81%	1117	121	996	89.17%	\$ 5.00	n/a	\$ 655.00	851	1,355 people, 4 years	R, B	Bu, Se, Pr, Br	Greenwich Department of Parking Services	41.0214 N, 73.6252 W	6/8/2017
	Old Greenwich Train Station	New Haven Main Line	10	67	11.73%	43	498	87.22%	0	6	1.05%	571	53	518	90.72%	\$ 5.00	n/a	\$ 415.00	642*	3 years	R, B	Bu, Se, Br, T	Greenwich Department of Parking Services	41.0334 N, 73.5678 W	6/8/2017
	Riverside Train Station	New Haven Main Line	0	35	10.97%	10	280	87.77%	0	4	1.25%	319	10	309	96.87%	\$ 5.00	n/a	\$ 415.00	450	1.5 years	R	Se, Br, Bu, Ph, T	Greenwich Department of Parking Services	41.03174 N, 73.5872 W	6/8/2017
New Canaan	New Canaan Train Station	New Canaan Branch Line	0	146	25.61%	17	418	73.33%	0	6	1.05%	570	17	553	97.02%	\$ 5.00	n/a	\$ 612.00	770	627 people, 7 years	R	(ALL)	New Canaan Parking Bureau	41.1457 N, 73.4964 W	3/2/2017
	Talmadge Hill Train Station	New Canaan Branch Line	0	96	26.23%	57	270	73.77%	1	2	0.55%	366	58	308	84.15%	\$ 5.00	n/a	\$ 465.00	427	226 people, 1.5 years	R	Sh, Se, Br	New Canaan Parking Bureau	41.1162 N, 73.4974 W	3/2/2017
New Fairfield	Ball Pond Firehouse Park and Ride	---	8	12	100.00%	n/a	n/a	n/a	n/a	n/a	n/a	12	8	4	33.33%	n/a	n/a	n/a	n/a	n/a	B	none	Town of New Fairfield	41.4569 N, 73.5284 W	12/1/2016
	Company A Firehouse Park and Ride	---	21	30	100.00%	n/a	n/a	n/a	n/a	n/a	n/a	30	21	9	30.00%	n/a	n/a	n/a	n/a	n/a	B	none	New Fairfield Volunteer Fire Department	41. 4646 N, 73.4946 W	12/1/2016
Newtown	I-84 @ Exit 9 Park and Ride	---	23	50	94.34%	n/a	n/a	n/a	3	3	5.66%	53	26	27	50.94%	n/a	n/a	n/a	n/a	n/a	N	none	CTDOT	41.4282 N, 73.3546 W	1/11/2017
	I-84 @ Exit 11 Park and Ride	---	36	73	93.59%	n/a	n/a	n/a	3	5	6.41%	78	39	39	50.00%	n/a	n/a	n/a	n/a	n/a	N	none	CTDOT	41.4087 N, 73.2677 W	1/11/2017
Norwalk	East Norwalk Train Station	New Haven Main Line	0	10	5.38%	39	174	93.55%	1	2	1.08%	186	40	146	78.49%	n/a	\$ 68.00	n/a	202	136 people	R, B	Sh, Br, Se, Bu, Pr	Norwalk Parking Authority	41.1044 N, 73.4041 W	6/1/2017
	I-95 @ Exit 16 Park and Ride	---	3	33	94.29%	n/a	n/a	n/a	2	2	5.71%	35	5	30	85.71%	n/a	n/a	n/a	n/a	n/a	B	none	CTDOT	41.1087 N, 73.4077 W	3/30/2017
	Merritt 7 Train Station	Danbury Branch Line	17	86	97.73%	n/a	n/a	n/a	2	2	2.27%	88	19	69	78.41%	n/a	n/a	n/a	n/a	n/a	R, B	Br, Se, Sh	CTDOT	41.1471 N, 73.4278 W	3/9/2017
	Route 15 @ Exit 38 Park and Ride	---	12	39	97.50%	n/a	n/a	n/a	1	1	2.50%	40	13	27	67.50%	n/a	n/a	n/a	n/a	n/a	N	none	CTDOT	41.1338 N, 73.4576 W	3/9/2017
	Rowayton Train Station	New Haven Main Line	1	330	100.00%	41	330	100.00%	1	3	0.91%	330	43	287	86.97%	\$ 7.00	\$ 30.00	n/a	475	135 people, 3 - 4 years	R	Br, Bu, Se	Rowayton 6th Taxing District, CTDOT	41.0777 N, 73.4443 W	6/1/2017
	South Norwalk Train Station	New Haven Main Line, Danbury Branch Line	140	941	100.00%	140	941	100.00%	0	15	1.59%	941	280	661	70.24%	\$ 12.00	\$ 97.00	n/a	750	2 years	R, B	Bu, Se, Pr, Sh, T	Norwalk Parking Authority	41.0955 N, 73.4218 W	6/1/2017
Redding	West Redding Train Station	Danbury Branch Line	5	12	14.63%	10	65	79.27%	5	5	6.10%	82	20	62	75.61%	\$ 5.00	n/a	\$ 250.00	85	no wait	R	Sh, Br, Ph	Redding Police, First Selectman's Office, DPW	41.3251 N, 73.4353 W	2/2/2017
Ridgefield	Bark Park, Park and Ride	---	17	30	100.00%	n/a	n/a	n/a	0	0	0.00%	30	17	13	43.33%	n/a	n/a	n/a	n/a	n/a	B	none	Ridgefield Parks and Recreation Dept.	41.2803 N, 73.4896 W	2/2/2017
	Branchville Train Station	Danbury Branch Line	3	10	6.21%	0	140	86.96%	4	4	2.48%	161	7	154	95.65%	\$ 5.00	n/a	\$ 250.00	140	no wait	R, B	Se, Bu, Br	Ridgefield Parking Authority, Parks Dept., PD	41.2672 N, 73.4411 W	2/2/2017
	Jesse Lee Church Park and Ride	---	3	46	100.00%	n/a	n/a	n/a	0	0	0.00%	46	3	43	93.48%	n/a	n/a	n/a	n/a	n/a	B	none	Jesse Lee Church, CTDOT	41.2756 N, 73.4998 W	2/2/2017
Stamford	Glenbrook Train Station	New Canaan Branch Line	0	90	57.69%	37	63	40.38%	3	3	1.92%	156	40	116	74.36%	\$ 3.00	\$45.00, \$90.00	n/a	62	data not official	R, B	Sh, Se, Br	Stamford Dept. of Traffic, Transportation & Parking	41.0710 N, 73.5199 W	6/15/2017
	Route 15 @ Exit 35 Park and Ride	---	18	52	94.55%	n/a	n/a	n/a	3	3	5.45%	55	21	34	61.82%	n/a	n/a	n/a	n/a	n/a	B	none	CTDOT	41.1116 N, 73.5462 W	3/31/2017
	Springdale Train Station	New Canaan Branch Line	0	56	26.54%	52	149	70.62%	6	6	2.84%	211	58	153	72.51%	\$ 3.00	\$45.00, \$90.00	n/a	163	data not official	R, B	Sh, Se, Br	Stamford Dept. of Traffic, Transportation & Parking	41.0888 N, 73.5178 W	6/15/2017
	Stamford Transportation Center	New Haven Main Line, New Canaan Branch Line	62	1539	97.22%	31	1539	97.22%	2	44	2.78%	1583	95	1488	94.00%	\$ 3.00	\$ 70.00	n/a	1462	180 people, 1 year	R, B	(ALL)	CTDOT	41.0469 N, 73.5421 W	6/15/2017
Westport	Greens Farms Train Station	New Haven Main Line	3	111	23.08%	45	375	77.96%	0	5	1.04%	481	48	433	90.02%	\$ 5.00	n/a	\$ 325.00	4165	2 years	R, B	Bu, T, Br, Se	Westport Police Dept., Office of First Selectman	41.1223 N, 73.3152 W	5/31/2017
	I-95 @ Exit 18 Park and Ride	---	57	86	98.85%	n/a	n/a	n/a	1	1	1.15%	87	58	29	33.33%	n/a	n/a	n/a	n/a	n/a	N	none	CTDOT	41.1291 N, 73.3328 W	3/30/2017
	Route 15 @ Route 33 Park and Ride	---	72	95	95.96%	n/a	n/a	n/a	4	4	4.04%	99	76	23	23.23%	n/a	n/a	n/a	n/a	n/a	N	none	CTDOT	41.1634 N, 73.3742 W	3/30/2017
	Route 15 @ Exit 42 Park and Ride	---	15	41	95.35%	n/a	n/a	n/a	2	2	4.65%	43	17	26	60.47%	n/a	n/a	n/a	n/a	n/a	N	none	CTDOT	41.1645 N, 73.3590 W	3/13/2017
	Saugatuck Train Station	New Haven Main Line	24	184	13.57%	80	1064	78.47%	9	25	1.84%	1356	113	1243	91.67%	\$ 5.00	n/a	\$ 325.00	4165	2 years	R, B	Bu, Pr, T, Se, Sh, Br	Westport First Seictman's Office, PD	41.1190 N, 73.3704 W	5/23/2017
Wilton	Cannondale Train Station	Danbury Branch Line	1	136	96.45%	n/a	n/a	n/a	3	5	3.55%	141	4	137	97.16%	n/a	n/a	n/a	n/a	n/a	R, B	Bu, Pr, T	CTDOT	41.2175 N, 73.4266 W	2/22/2017
	Wilton Train Station	Danbury Branch Line	6	240	95.62%	n/a	n/a	n/a	6	11	4.38%	251	12	239	95.22%	n/a	n/a	n/a	n/a	n/a	R, B	Bu, Pr, T	CTDOT	41.1961 N, 73.4321 W	2/22/2017
	Wolfpit Road Park and Ride	---	37	50	96.15%	n/a	n/a	n/a	2	2	3.85%	52	39	13	25.00%	n/a	n/a	n/a	n/a	n/a	B	none	CTDOT	41.1836 N, 73.4196 W	2/22/2017



Transit Connections			
Municipality	Station or Park and Ride Lot Name	Type	Details
Bethel	Bethel Metro-North Station	Rail	Danbury Branch Line
		Bus	HARTransit 5 Route
Danbury	Danbury Metro-North Station	Rail	Danbury Branch Line
		Bus	HARTransit Routes 2, 7 and New Milford LOOP routes
	Federal Rd. Park and Ride	Bus	HARTransit Danbury-Brewster Shuttle to Harlem Line, 7, 4, and New Milford LOOP routes
	I-84 @ Exit 1 Park and Ride	Bus	HARTransit Danbury-Brewster Shuttle to Harlem Line and 3 route
	I-84 @ Exit 2 Park and Ride	Bus	HARTransit Danbury-Brewster Shuttle to Harlem Line and 3 route
	Miry Brook Park and Ride	Bus	HARTransit 7Link
	I-84 @ Segar St. Park and Ride	Bus	HARTransit 6 and Mall-Hospital LOOP routes
Darien	White Turkey Rd. Ext. Park and Ride	Bus	HARTransit Danbury-Brewster Shuttle to Harlem Line
	Darien Metro-North Station	Rail	New Haven Main Line
		Bus	CTtransit Route 344
	Noroton Heights Metro-North Station	Rail	New Haven Main Line
Greenwich		Bus	CTtransit Route 344
	Cos Cob Metro-North Station	Rail	New Haven Main Line
	Greenwich Metro-North Station	Rail	New Haven Main Line
		Bus	CTtransit 311, 971 I-Bus; NTD Greenwich Central and Greenwich West Loops
	Old Greenwich Metro-North Station	Rail	New Haven Main Line
		Bus	CTtransit 311, 324
New Canaan	Riverside Metro-North Station	Rail	New Haven Main Line
	New Canaan Metro-North Station	Rail	New Canaan Branch Line
	Talmadge Hill Metro-North Station	Rail	New Canaan Branch Line
New Fairfield	Ball Pond Firehouse Park and Ride	Bus	HARTransit New Fairfield-Southeast Shuttle to Harlem Line
	Company A Firehouse Park and Ride	Bus	HARTransit New Fairfield-Southeast Shuttle to Harlem Line
Newtown	I-84 @ Exit 9 Park and Ride	(NONE)	No transit access
	I-84 @ Exit 11 Park and Ride	(NONE)	No transit access
Norwalk	East Norwalk Metro-North Station	Rail	New Haven Main Line
		Bus	NTD Routes 8 and 11
	I-95 @ Exit 16 Park and Ride	Bus	NTD Routes 8 and 11
	Merritt 7 Metro-North Station	Rail	Danbury Branch Line
		Bus	NTD Merritt 7/Glover Ave Commuter Shuttle and Route 3
	Route 15 @ Exit 38 Park and Ride	(NONE)	No transit access
	Rowayton Metro-North Station	Rail	New Haven Main Line
	South Norwalk Metro-North Station	Rail	New Haven Main Line, Danbury Branch Line
Redding		Bus	NTD Merritt7/Glover Ave, Norwalk Hospital/Belden Ave, 10/20 Westport Rd and NCC Commuter shuttles, Route 10, Route 11 and Route 12
	West Redding Metro-North Station	Rail	Danbury Branch Line
Ridgefield	Bark Park, Park and Ride	Bus	HARTransit Ridgefield-Katonah Shuttle to Harlem Line
	Branchville Metro-North Station	Rail	Danbury Branch Line
		Bus	HARTransit 7Link
	Jesse Lee Church Park and Ride	Bus	HARTransit Ridgefield-Katonah Shuttle to Harlem Line
Stamford	Glenbrook Metro-North Station	Rail	New Canaan Branch Line
		Bus	CTtransit Routes 328 and 334
	Route 15 @ Exit 35 Park and Ride	Bus	CTtransit Route 331
	Springdale Metro-North Station	Rail	New Canaan Branch Line
		Bus	CTtransit Route 334
	Stamford Transportation Center	Rail	New Haven Main Line, New Canaan Branch Line; AMTRAK Acela Express, NE Regional, Vermonter
		Bus	CTtransit Stamford: Routes 311, 312, 313, 321, 324, 326, 327, 328, 331, 333, 334, 335, 336, 341,342, 344, 345, 351 and 971 I-BUS to Bee-Line and Metro-North Harlem Line
Westport		Bus	Greyhound Lines; Peter Pan; UCONN Stamford Shuttle; Harbor Point Trolley
	Greens Farms Metro North Station	Rail	New Haven Main Line
		Bus	Westport Transit G1 and G2 shuttles (operated by NTD)
	I-95 @ Exit 18 Park and Ride	(NONE)	No transit access
	Route 15 @ Route 33 Park and Ride	(NONE)	No transit access
	Route 15 @ Exit 42 Park and Ride	(NONE)	No transit access
	Saugatuck Metro-North Station	Rail	New Haven Main Line
Wilton		Bus	Westport Transit S1, S2, S3, S4 commuter shuttles and Imperial Avenue commuter lot shuttle (operated by NTD)
	Cannondale Metro-North Station	Rail	Danbury Branch Line
		Bus	HARTransit 7Link
	Wilton Metro-North Station	Rail	Danbury Branch Line
		Bus	HARTransit 7Link; NTD Route 4
Wolfpit Road Park and Ride		Bus	HARTransit 7Link; NTD Route 4



# Rail Station Parking Cost / Capacity Verification Form

Municipality
Station

Date
Verified By

Facility Name / Location					
Structure / Lot / On-street					
Daily Spaces (tallies)				Total	
Permit Spaces (tallies)				Total	
Handicapped Spaces (tallies)				Total	
Other Spaces (tallies)				Total	
Permit			Non-Permit		
Annual	Monthly	Daily	Daily	Hourly	Other
\$	\$	\$	\$	\$	\$

Facility Name / Location					
Structure / Lot / On-street					
Daily Spaces (tallies)				Total	
Permit Spaces (tallies)				Total	
Handicapped Spaces (tallies)				Total	
Other Spaces (tallies)				Total	
Permit			Non-Permit		
Annual	Monthly	Daily	Daily	Hourly	Other
\$	\$	\$	\$	\$	\$

Facility Name / Location					
Structure / Lot / On-street					
Daily Spaces (tallies)				Total	
Permit Spaces (tallies)				Total	
Handicapped Spaces (tallies)				Total	
Other Spaces (tallies)				Total	
Permit			Non-Permit		
Annual	Monthly	Daily	Daily	Hourly	Other
\$	\$	\$	\$	\$	\$

Facility Name / Location					
Structure / Lot / On-street					
Daily Spaces (tallies)				Total	
Permit Spaces (tallies)				Total	
Handicapped Spaces (tallies)				Total	
Other Spaces (tallies)				Total	
Permit			Non-Permit		
Annual	Monthly	Daily	Daily	Hourly	Other
\$	\$	\$	\$	\$	\$

Notes
-------