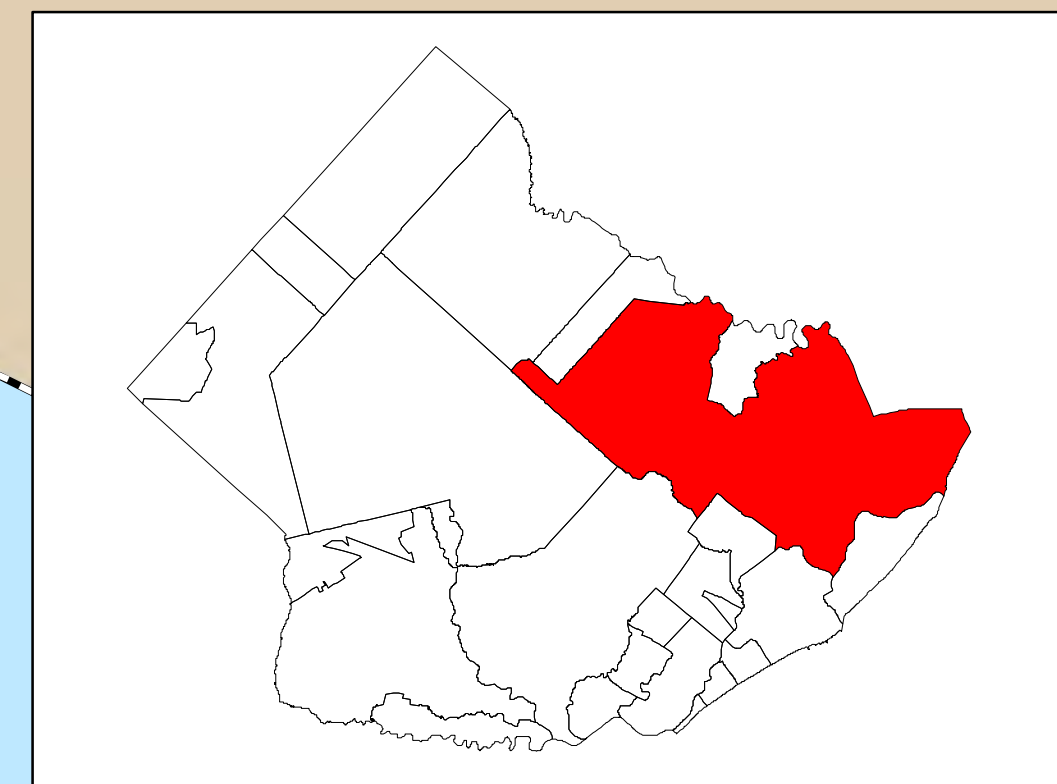


Galloway Municipal Zoning Boundaries December 2011 Atlantic County, NJ



BURLINGTON

MULLICA

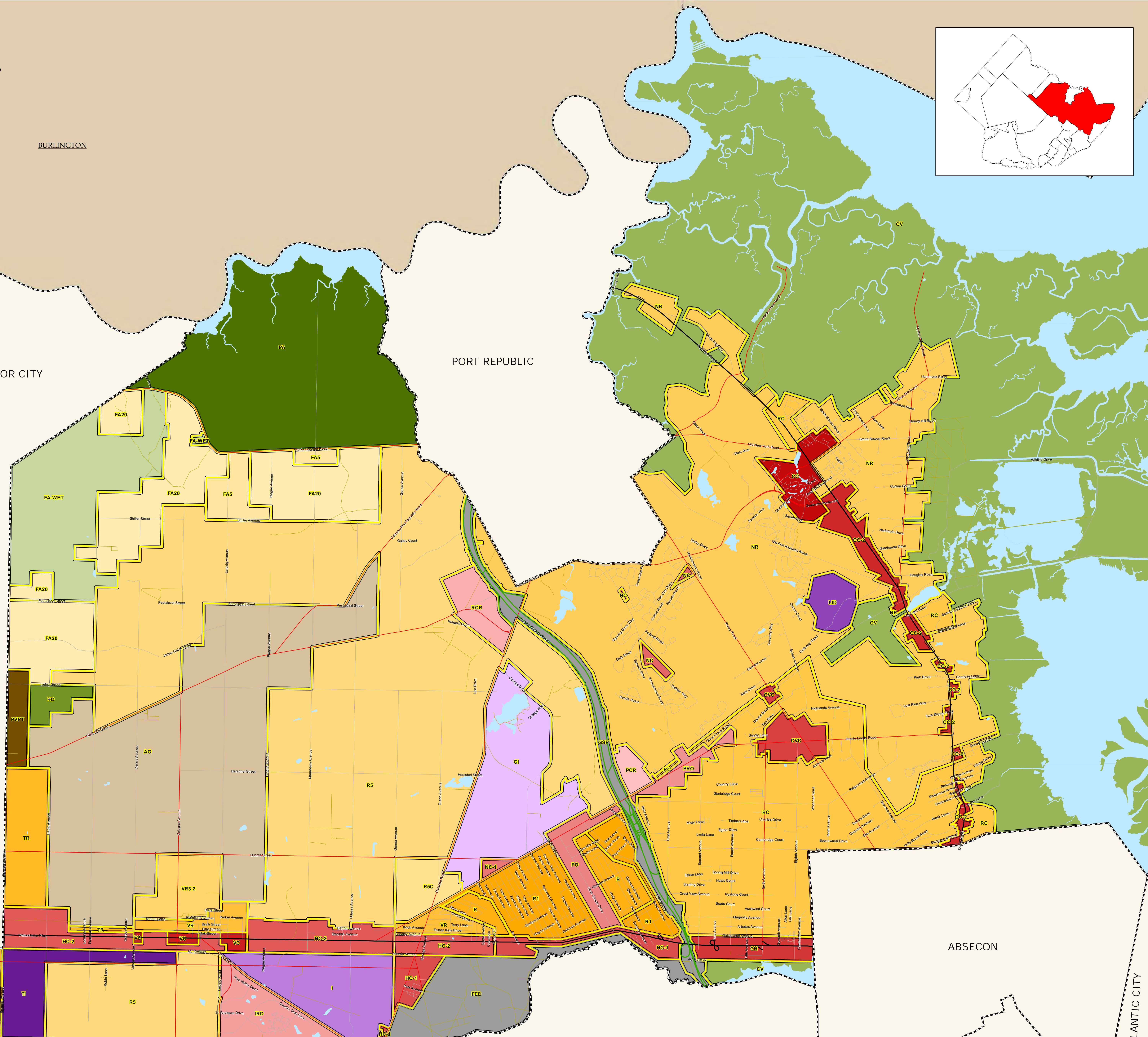
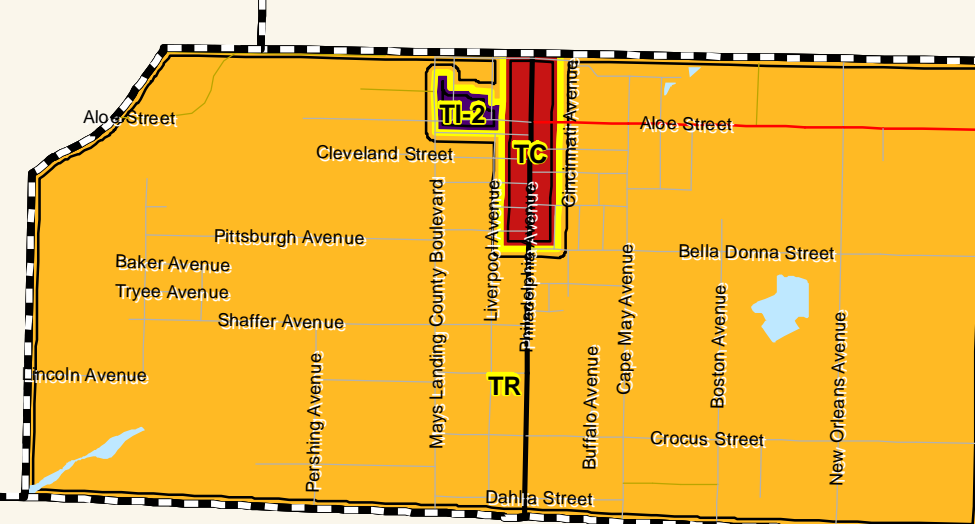
EGG HARBOR CITY

PORT REPUBLIC

Galloway Municipal Zoning

Zone	Description	Use	Base Lot	Min Lot	Min Density	Max Density	Revision Date	FAR	Total Acres
AG	Agricultural**	AGRICULTURAL	10 acres		0.10	0.10	5/10/2011	0.00	3833.85
CC	Community Commercial****	COMMERCIAL	10,000 sf	15,000 sf	1.25	4.00	5/10/2011	0.42	226.73
CC-2	Community Commercial-2*****	COMMERCIAL	20,000 sf	15,000 sf	0.00	0.00	5/10/2011	0.00	332.71
CH	Commercial Highway****	COMMERCIAL	20,000 sf		0.00	0.00	5/10/2011	0.42	200.85
CV	Conservation	CONSERVATION	5 acres		0.20	0.20	5/10/2011	0.00	32524.79
CVC	Community Village Commercial	COMMERCIAL	20,000 sf		0.00	0.00	5/10/2011	0.41	200.61
FA-WET	Forest Area	CONSERVATION	45 acres		0.02	0.02	5/10/2011	0.00	1234.60
FA20	Forest Area*	RESIDENTIAL	20 acres	1 acre	0.05	1.00	5/10/2011	0.00	1850.61
FAS	Forest Area*	RESIDENTIAL	5 acres	1 acre	0.20	1.00	5/10/2011	0.00	232.99
FED	Federal	TRANSPORTATION			0.00	0.00	5/10/2011	0.00	730.67
GI	Government Institution	INSTITUTIONAL	2 acres		0.00	0.00	5/10/2011	0.00	1005.45
GSP	Garden State Parkway	TRANSPORTATION			0.00	0.00	5/10/2011	0.00	505.36
HC-1	Highway Commercial-1	COMMERCIAL	1.15 acres		0.00	0.00	5/10/2011	0.41	303.25
HC-2	Highway Commercial-2	COMMERCIAL	2 acres		0.00	0.00	5/10/2011	0.41	895.51
I	Industrial	INDUSTRIAL	5 acres		0.00	0.00	5/10/2011	0.00	656.58
IRD	Industrial Residential Development	COMMERCIAL	3.2 acres	1 acre	0.30	8.00	5/10/2011	0.00	363.86
LID	Conditional Industrial	INDUSTRIAL	5 acres		0.00	0.00	5/10/2011	0.00	161.20
NC	Neighborhood Commercial	COMMERCIAL	1 acre		0.00	0.00	5/10/2011	0.51	43.20
NC-1	Neighborhood Commercial*****	COMMERCIAL	35,000 sf		0.00	0.00	5/10/2011	0.00	27.53
NR	Neighborhood Residential	RESIDENTIAL	2 acres		0.50	0.50	5/10/2011	0.00	7122.38
PA	Preservation Area	PRESERVATION	3.2 acres		0.30	0.30	5/10/2011	0.00	2690.18
PCR	Planned Commercial Recreation*****	COMMERCIAL	40 acres	50,000 sf	0.00	0.00	5/10/2011	0.00	78.35
PO	Planned Offices	COMMERCIAL	1.15 acres	50,000 sf	0.00	0.00	5/10/2011	0.41	224.09
PRO	Professional Offices	COMMERCIAL	1.15 acres	50,000 sf	0.00	0.00	5/10/2011	0.41	127.64
PVPT	Resort Development Area	AGRICULTURAL	10 acres		0.00	0.00	5/10/2011	0.00	147.38
R	Residential	RESIDENTIAL	0.14 acres		7.00	7.00	5/10/2011	0.00	275.45
R1	Residential	RESIDENTIAL	0.14 acres		7.00	7.00	5/10/2011	0.00	695.13
R5	Residential	RESIDENTIAL	5 acres		0.20	0.20	5/10/2011	0.00	8276.96
RSC	Rural Development Cluster	RESIDENTIAL	10 acres		0.20	0.20	5/10/2011	0.00	218.38
RC	Residential Compatibility	RESIDENTIAL	2 acres	1 acre	0.50	1.00	5/10/2011	0.00	3260.69
RCR	Resort Commercial Rural	COMMERCIAL	5 acres		0.00	0.00	5/10/2011	0.41	210.60
RD	Recreation Development	PARK	5 acres		0.00	0.00	5/10/2011	0.00	123.25
TC	Town Commercial	COMMERCIAL	0.3 acres		0.00	0.00	5/10/2011	0.41	28.22
TI	Town Industrial	INDUSTRIAL	5 acres		0.00	0.00	5/10/2011	0.40	382.18
TI-2	Town Industrial-2*****	INDUSTRIAL	1 acre	0.57 acre	0.00	0.00	5/10/2011	0.00	7.82
TR	Town Residential***	RESIDENTIAL	1 acre	0.27 acres	1.00	3.63	5/10/2011	0.00	1479.80
VC	Village Commercial***	COMMERCIAL	0.3 acres		0.00	0.00	5/10/2011	0.41	66.85
VR	Village Residential**	RESIDENTIAL	1 acres	0.27 acres	1.00	3.63	5/10/2011	0.00	264.41
VR3.2	Residential	RESIDENTIAL	3.2 acres		0.30	0.30	5/10/2011	0.00	314.34

*Single family dwelling units are permitted on 1 acre and 3.2 acre lots.
 **Single family dwelling units are permitted on 3.2 acres. Single family dwelling units are permitted on 1 acre lots at a density of 1du/40 acres if
 ***Minimum lot size for single family dwelling units without public water/sewer is 12,000 sf or 3.63 du/acre.
 ****Minimum lot size for single family dwelling units is 35,000 sf or 0.80 du/acre
 *****Residential uses are not permitted. Ordinance permits a maximum density of 1.25 du/acre.
 *****Community & Neighborhood Commercial on 20,000 sf lots. Professional Office uses on 15,000 sf lots. Residential permitted where existing.
 *****Professional offices; financial institutions; restaurants, excluding drive-thru facilities. Public and quasi-public schools and institutions of learning.
 *****40 acre base lot for planned commercial recreation complex; 50,000 sq ft for individual lots not part of a planned development as retail or
 *****Light industrial uses and contractor warehousing and office facilities are permitted uses on one acre lot sizes; no residential



ABSECON

ATLANTIC CITY

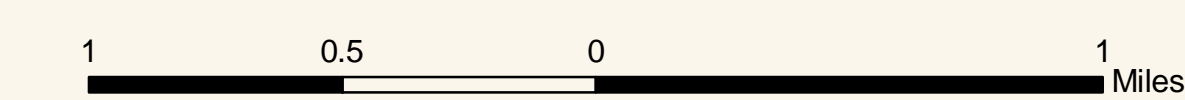
HAMILTON TOWNSHIP

EGG HARBOR TOWNSHIP

PLEASANTVILLE

Legend

- Zoning
 - Agricultural
 - Commercial
 - Conservation / Wetlands
 - Industrial / Institutional
 - Residential
 - Transportation
 - Water
- US & State Highways
- Garden State Parkway
- County Routes
- Municipal Streets
- Other
- Alley
- Municipal Boundary
- County Boundary



This map is for demonstration purposes only and was not developed in accordance with National Map Accuracy Standards. Any use of this product with respect to accuracy and precision shall be the sole responsibility of the user. The map was developed, in part, using New Jersey Department of Environmental Protection Geographic Information System (GIS) digital data, in conjunction with the Atlantic County Office of Geographic Information System, but this secondary product has not been verified by NJDEP and is not state authorized. The geographic accuracy and precision of the GIS data contained in the map has not been developed nor verified by a professional licensed land surveyor and shall not be used or intended to be used in matters requiring delineation and location of true ground horizontal and/or vertical controls. File: GZA_Zoning011.mxd 11/15/2011