

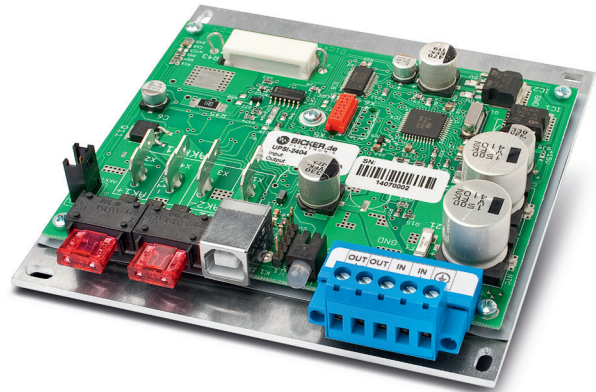
UPSI-2404

24 VDC / 6 A



- ✓ Continuous battery monitoring
- ✓ Battery capacitance display
- ✓ Battery lifetime display
- ✓ USB communication interface

The UPSI-2404 protects connected consumer loads from supply voltage fluctuations and interruptions. The μ C controlled DC UPS has a continuous battery monitoring which ensures that sufficient capacitance remains in the battery to guarantee the supply of consumer loads in case of power failure. Additionally the UPSI-2404 offers a load sensor and a timer function.



Technical data	
Input voltage	24 VDC (22.5...28 V)
Input current	6.7 A max.
Output voltage	In normal mode: app. 0.5 V below input voltage In battery mode: app. 29...19 VDC
Output current	6 A max.
Battery charge current	0.65 A max. (internal battery charger)
Charging method	UI characteristic, with temperature regulation
Protection	Deep discharge protection: 19 VDC \pm 2 % Overload protection at output: 9 A for 2 seconds, switch off Short-circuit protection: Switch off via μ C
Transfer time / limits	Mains / battery 20.5 VDC \pm 2 %, battery / mains 22 VDC \pm 2 %
Interface	USB (Standard B), internal USB
Type of battery	Cyclon/Hawker/lead-fleece
Temperature	Operating: -20...+70 °C / Storage: -40...+70 °C
Humidity	Operating: 10...85 % RH, non-condensing / Storage: 10...90 % RH, non-condensing
Dimensions (WxDxH)	119 x 114 x 24 \pm 0.5 mm
Weight (net)	0.25 kg

Product specific data	
LED display	3-colour-LED for „Power ok“ (green), „Power Fail“ (orange), „Battery low“ (red/orange flashing) and „Battery defect“ (red/green flashing), short circuit at output/overload (red)
Battery monitoring	Battery test is carried out in normal mode approx every 10 minutes, in case of „Battery defect“ notification the LED flashes red/green
Power consumption	App. 80 mA
Shutdown detection	Via UPS Software „UPSI Control Center“
Shutdown-suppression	During system start-up the shutdown signal is suppressed for app. 2 minutes.
Reboot-Funktion	If power fails and then returns during the shutdown mode of Windows®, the reboot function restarts the system after about 10 seconds.
Load sensor	Via UPS software „UPSI Control Center“ adjustable (0...20 W). When falling below the set load the UPS switches off after 5 seconds.
Timerfunktion	Via UPS software „UPSI Control Center“ adjustable in 2 minutes-steps from 2...20 Min. (in battery mode)
Back up time	App. 1.5 h at 1 A / app. 25 min at 3 A / app. 15 min at 5 A (measured at +20 °C with BP-1225)
UPS software	„UPSI Control Center“ (Windows® 7 or higher) to download at www.bicker.de (XP on request)

Optional Accessories

►►► For detailed information please visit our website www.bicker.de and refer to the article number.

BP-1225 | Battery pack

With CYCLON cells, 12 V / 2.5 Ah,
-30...+70 °C



CB-USB01 | USB cable 2.0

A/B connector, 500 mm



LC-R121R3PG | Battery pack

For UPSI-2402 and UPSI-2404,
12 V / 1.3 Ah, 0...+40 °C



LC-R122R2PD | Battery pack

For UPSI-2402 and UPSI-2404,
12 V / 2.2 Ah, 0...+40 °C



image similar

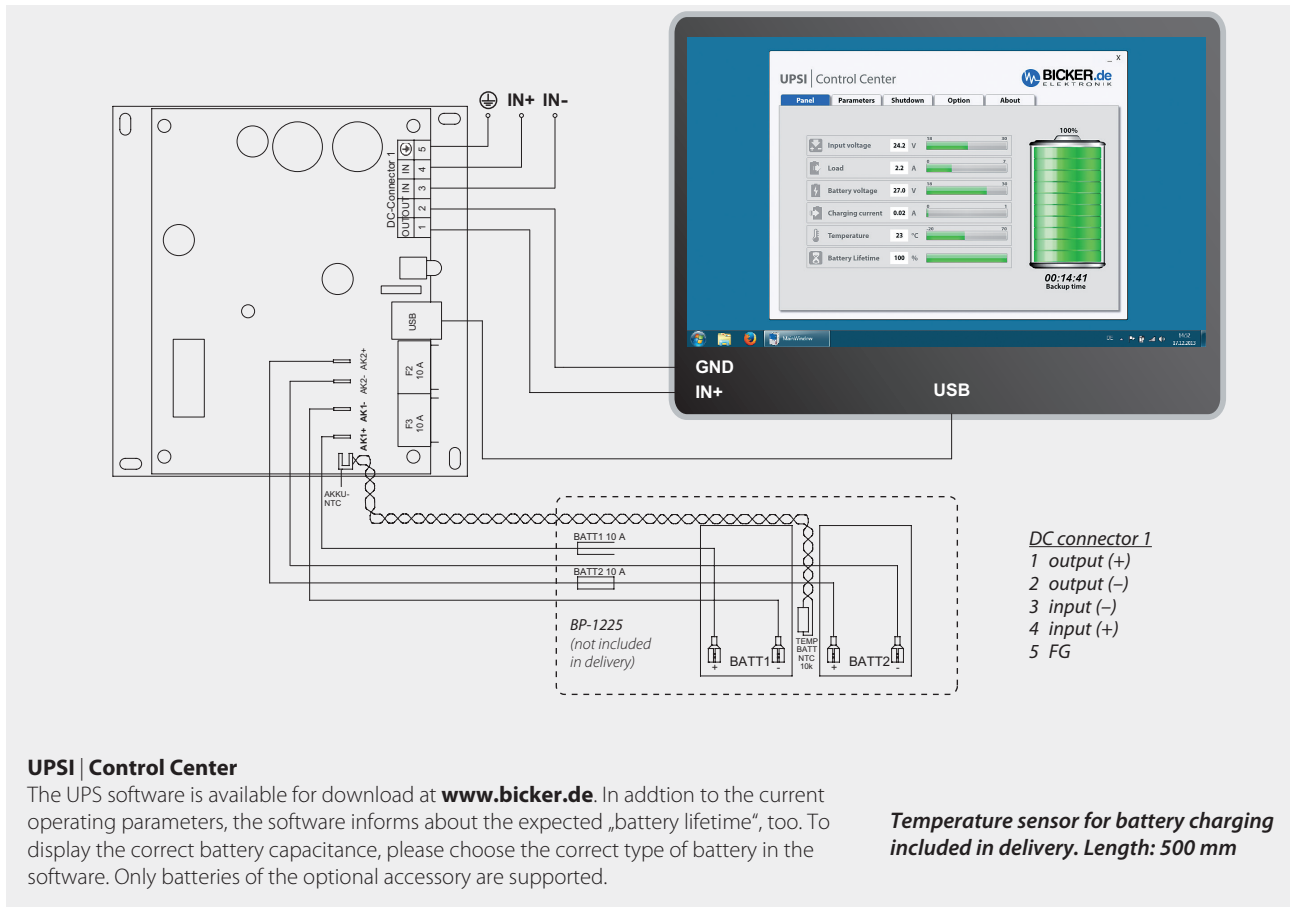
LC-R127R2PG1 | Battery pack

For UPSI-2402 and UPSI-2404,
12 V / 7.2 Ah, 0...+40 °C



image similar

Connection



Drawing UPSI-2404

