

The Sheffield College



SHEFFIELD CITY PARTNERSHIP BOARD

13TH MAY 2022

TRANSFORMING LIVES THROUGH LEARNING



STRATEGIC PLAN 2021-2025

Our vision:



Our mission:

Transforming lives through learning

Our ambitions:

LEARNING

To be recognised as a provider of high quality education and training by our communities and partners. We will:

- 1.1 Help students to 'Go Further,' putting them at the heart of everything we do
- 1.2 Have high aspirations and a culture of success, through a strong focus on excellence and continuous improvement
- 1.3 Celebrate and value diversity in a safe, supportive and inclusive learning environment
- 1.4 Support students to progress well through personalised learning, feedback and assessment approaches
- 1.5 Enable students to achieve their chosen next steps of study or employment, through flexible progression routes in a curriculum that anticipates and responds to local, regional and national priority needs
- 1.6 Listen to students, so that their views have a big influence on decision making within the college
- 1.7 Help students to achieve the best possible outcomes, gain industry specific skills, knowledge and behaviours for an ever-changing world

PARTNERSHIPS

To play a leading role locally, regionally and nationally, with a reputation as a strong and reliable partner. We will:

- 3.1 Be recognised for the provision of high quality, employment focused technical education and skills
- 3.2 Be a first choice with employers for education and training provision
- 3.3 Engage with, inform and influence the skills agenda locally and nationally through partnerships and relationships with relevant stakeholders
- 3.4 Establish college business centres in key priority areas with partner employers
- 3.5 Use our position as an anchor institution in the city to make a significant contribution to a) the development of the South Yorkshire Mayoral Combined Authority economy; and b) social cohesion and inclusion of all communities
- 3.6 Promote and celebrate the impact of our partnerships on the achievements of our students, staff and the college

PEOPLE

To be a place where people want to work, recognised for our inclusive and aspirational ethos. We will:

- 2.1 Continue to build strong values that are clearly understood and shared by all staff, with a focus on high expectations and continuous improvement
- 2.2 Recruit diverse and talented people that share our vision and values, through a strong employer brand, attractive job roles and a fair and rigorous selection process
- 2.3 Support all our people to achieve and maintain their well-being and their best performance, through a clear performance and development framework and continued investment in relevant high quality training
- 2.4 Support all our people to have a good work life balance through a combination of flexible working options and continuous review of our working practices
- 2.5 Provide clear career pathways for staff and identify and support talented people to develop and progress within the college, encouraging the development and promotion of minority groups
- 2.6 Continue to communicate well with our workforce, as well as listening to and acting on their voice - including amplifying the voice of underrepresented groups
- 2.7 Reward and recognise all our people in a fair, transparent, but flexible way

SUSTAINABILITY

To be a financially and environmentally sustainable organisation. We will:

- 4.1 Increase the number of students achieving qualifications and other outcomes, through targeted growth in our key markets and a strong commercial offer
- 4.2 Develop and implement a long-term green strategy to include a green skills curriculum and environmentally sustainable operations within the college
- 4.3 Provide excellent facilities and a great environment - both actual and virtual - for learning, teaching and assessment
- 4.4 Remain financially strong
- 4.5 Provide an efficient, effective and enjoyable working environment
- 4.6 Benchmark widely, so that we know how well we are doing in comparison to others in our sector

WHAT'S SO SPECIAL ABOUT FE?

EDUCATE AND TRAIN

1.7M
PEOPLE

1 MILLION
ADULTS
STUDY IN COLLEGES

AVERAGE AGE OF A
COLLEGE STUDENT IS

28
YEARS OLD

652,800
16 – 18
YEAR OLDS STUDY
IN COLLEGES

55,000
APPRENTICES
STUDY IN COLLEGES

EMPLOY
105,000
FULL-TIME
EQUIVALENT PEOPLE

WHAT'S SO SPECIAL ABOUT THE SHEFFIELD COLLEGE?

THE COLLEGE EMPLOYS
APPROXIMATELY
1,320 STAFF

2,000 OF OUR
STUDENTS ARE
APPRENTICES

THE TOTAL NUMBER OF ACCESS TO
UNIVERSITY LEVEL STUDENTS IN 2021/22 IS **350**

IN 2021/22:
WE HAVE OVER
14,000
STUDENTS AND
APPRENTICES
STUDYING WITH US

5,300
OF OUR STUDENTS ARE
AGED 16 TO 18

OVER 7,000
OF OUR STUDENTS
WERE AGED 19+

WHAT'S SO SPECIAL ABOUT THE SHEFFIELD COLLEGE?

WE OFFER ALMOST **600**
DIFFERENT QUALIFICATIONS:

- **130 APPRENTICESHIP PROGRAMMES**
- **VOCATIONAL DIPLOMAS**
- **A LEVELS**
- **ACCESS TO HE COURSES**
- **FOUNDATION AND HONOURS DEGREES**

WE HAVE

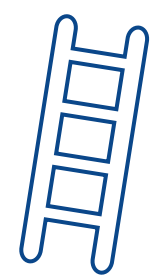
440

DEGREE LEVEL STUDENTS

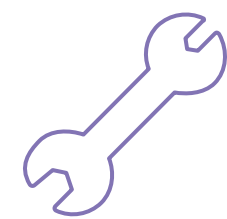
THE COLLEGE WORKS WITH ALMOST

2,500 EMPLOYERS

WHAT CURRICULUM DO WE OFFER?



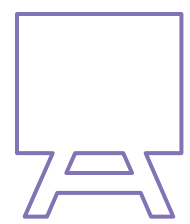
Building
Technologies



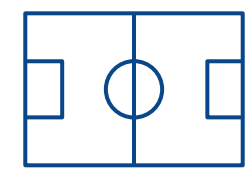
Advanced Vehicle,
Engineering & Digital
Technologies



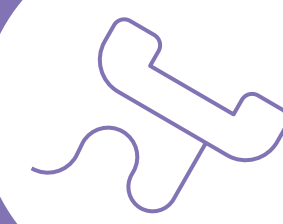
Health, Care &
Health Technologies



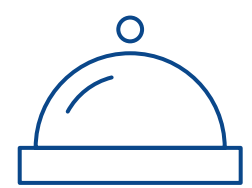
Arts & Creative
Industries



Fitness & Life
Sciences



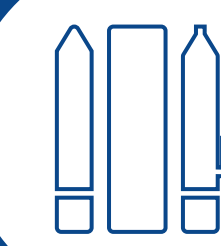
Service Industries



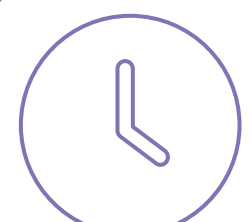
Events, Hospitality &
Food Technologies



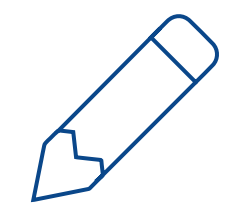
Adult English
& Maths



ESOL/EFL



Adult Employability



SEND and
Alternative Provision



Professional
Studies

SOUTH YORKSHIRE COLLEGES PARTNERSHIP

**TRAINEESHIP
PROVISION**

**INSTITUTE OF
TECHNOLOGY**

**DIGITAL SKILLS
BOOTCAMPS**

**BUSINESS
ENGAGEMENT &
APPRENTICESHIP
HUB**

The
Sheffield
College

CITY CENTRE ADULT PROVISION



**The
Sheffield
College**

CITY CENTRE ACADEMIC STUDIES CENTRE



The
Sheffield
College

ADVANCED TECHNOLOGY CENTRE



**The
Sheffield
College**

SUSTAINABLE CONSTRUCTION CENTRE



GO FURTHER