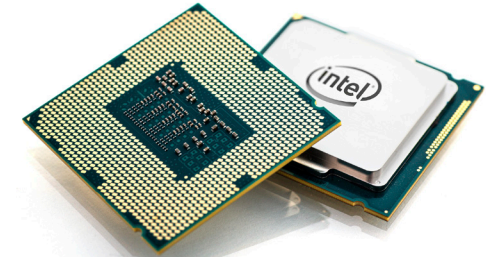
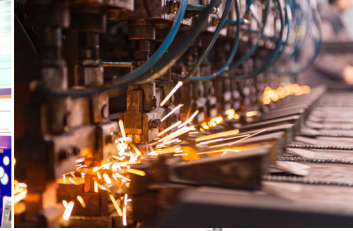
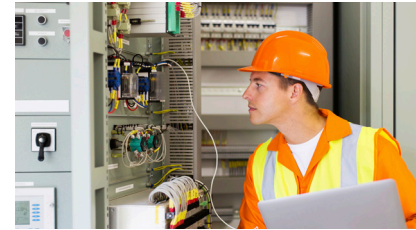
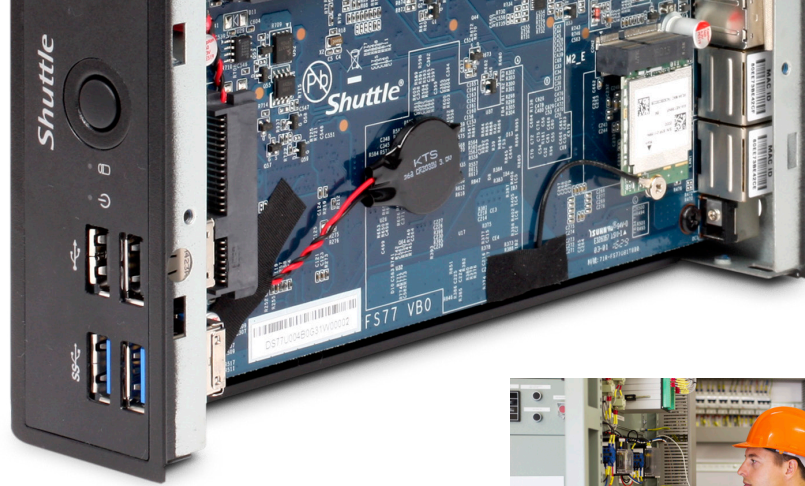
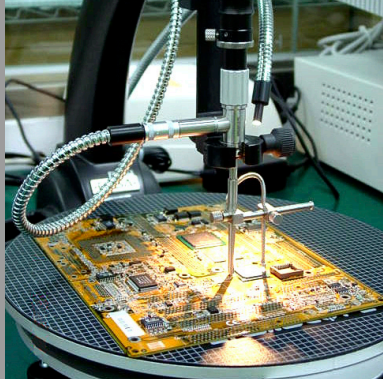


Shuttle[®]



PRODUCTS 2022



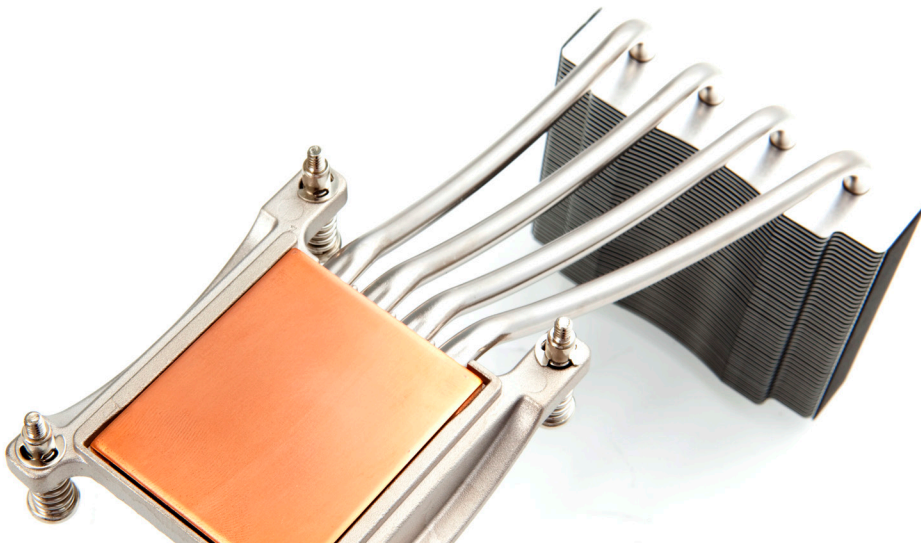


WELCOME TO THE WORLD OF SPACE-SAVING MINI PCs

It all began in 1983. We started early and have been a genuinely pioneering force in the industry since 2001. Over the past 21 years, we have launched an array of space-saving and energy-efficient PCs for every area of application. The unique feature of our machines is the use of sophisticated cooling concepts for minimum operating noise. We manufacture reliable Slim PCs, Mini PCs, and All-in-One PCs for the office – and for extremely demanding professional applications.

COMPANY PROFILE

Established in 1983 in Taiwan, we specialise in the development and production of space-saving Mini PCs. The stock market listed company is represented globally through subsidiaries in Germany, the USA, China and Japan. Since 2001 attractive PC solutions in an array of formats designed for virtually every area of application have been the main business focus of Shuttle. We aim to develop individual solutions for the demanding requirements of customers. Technical innovations such as new chipsets, processors and connections are regularly integrated in new models within a short time of product launch. The range of products has recently been expanded to include fanless Slim PCs.





MILESTONES

- 2021 — Shuttle releases Box-PCs
- 2020 — First Bar-Type Signage Display from Shuttle
- 2019 — Shuttle presents solution for edge computing
- 2018 — Shuttle adds 11.6" model to its All-in-One PC product range
- 2017 — Shuttle launches its first model with HDMI 2.0
- 2016 — Shuttle launches its first model with vPro technology
- 2015 — Shuttle launches its first model with IP54 certification
- 2014 — For the first time Shuttle offers ARM-based PCs
- 2013 — Shuttle celebrates its 30th anniversary since its establishment
- 2012 — Launch of particularly robust and fanless industrial PCs
- 2012 — Introduction of OMNINAS (NAS solutions)
- 2012 — Shuttle adds 18.5" model to its All-in-One PC product range
- 2011 — Shuttle launches the world's fastest Mini PC
- 2010 — Shuttle launches its first 1-litre PC (fanless)
- 2009 — Shuttle starts to use new production facilities in China
- 2009 — Shuttle starts development and production of OEM notebooks
- 2009 — Shuttle launches its first All-in-One PC (fanless)
- 2008 — Shuttle launches Mini PC with integrated touchscreen
- 2006 — Shuttle launches its first 3-litre PC
- 2005 — Shuttle opens branch office in China

- 2005 — Shuttle launches its first Media-Center XPC
- 2005 — First Mini PC in the world with two graphics cards in SLI mode
- 2005 — Tom's Hardware awards Shuttle 'Best SFF PC Maker'
- 2004 — Shuttle introduces XPC complete system solutions
- 2004 — Shuttle establishes Japan branch office
- 2004 — Over one million XPCs shipped
- 2002 — Shuttle introduces the patented 'I.C.E.' heatpipe cooling system
- 2001 — Shuttle launches first Shuttle XPC Mini PC
- 2000 — ISO-14001 certification
- 2000 — Shuttle Inc. becomes a publicly listed company (TAIEX: 2405)
- 1999 — ISO-9001 certification
- 1998 — Shuttle develops the world's first 17×17cm motherboard for OEM market
- 1997 — Shuttle establishes 3,500 m² production facilities in Taoyuan, Taiwan
- 1995 — Shuttle recognised as the world's 5th largest mainboard maker
- 1995 — ISO 9002 and TÜV certification
- 1990 — Shuttle Computer Handels GmbH established in Germany
- 1988 — Shuttle Computer Group USA established
- 1984 — Shuttle begins manufacturing motherboards in Taoyuan, Taiwan
- 1983 — Shuttle Inc., Taiwan established (formerly Holco)

SOLUTIONS FOR ANY KIND OF APPLICATIONS

Our space-saving Mini PCs are real multi-purpose machines. This is just a small selection of possible scenarios that Shuttle holds a solution for.

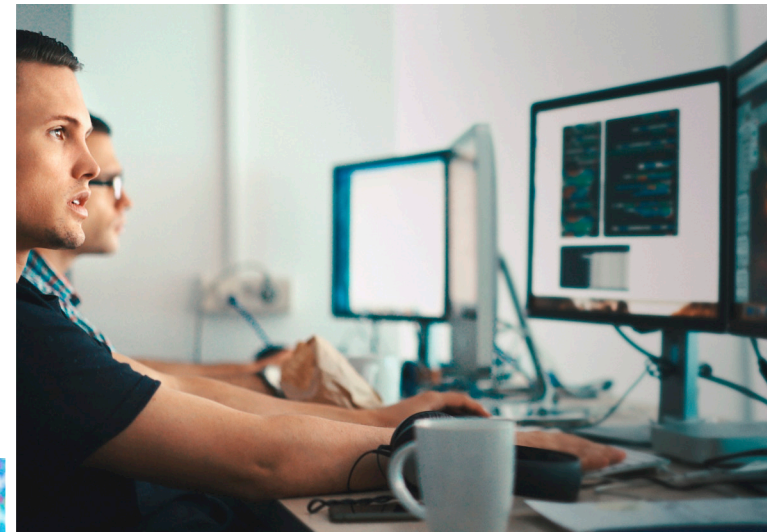


DIGITAL SIGNAGE

Digital advertising areas, information screens and electronic signs are now an integral part of everyday life. Shuttle supplies the right player for every scenario – and for a wide range of operating systems. These compact machines are all characterised by their robust design. They range from ultra-high-performance models and machines with innumerable ports and connections to low-energy, continuously running fanless devices. High-strength steel and a broad temperature spectrum enable installation even in difficult environments.

POS

The purchase of a POS system often represents a considerable capital investment. However, with Shuttle's energy-saving All-in-One PCs in your desired configuration, you save money. Thanks to the tilting pedestal and standard installation mount, these machines can be installed almost anywhere. And our new IP54-compliant models are now even more robust. Maximum flexibility in terms of choice of hardware and software enables the creation of a POS solution that exactly meets your requirements.



SERVER

As a UTM/firewall, file server, web server or mail server and much more – the Mini-PCs from Shuttle cut a fine figure. Two network connections (and even more via expansion cards) as well as Wi-Fi make it possible to set up versatile server services or integrate them into existing complex network structures. Powerful processors guarantee a high packet throughput rate and up to 128 GB of memory enable virtualisation. Shuttle offers various solutions in different chassis formats for your specific server.



INDUSTRY

Even in tough environments in which supreme reliability particularly matters, people choose products from Shuttle. Are you looking for fanless Mini-PCs for production environments and logistics centres? Perhaps robust technology for inter-linked control cabinets with lots of inputs and outputs? Even versions with superb performance for demanding real-time calculations in the area of image recognition and data capture are available. Allow yourself to be impressed by our variety of products. If you have any questions, we will be happy to advise you.

OFFICE

It is important to be able to work without disturbances and distracting noises. And a Shuttle slim desktop PC is the ideal companion at work – it stays discreetly in the background, but is also able to spring into action when needed. These tiny PC solutions meet your requirements precisely. You have a wide choice of processors, for example the energy-saving, dual-core Intel Celeron or the extremely powerful Intel Core i7 models. Is just 8 GB plenty for you or do you need 64 GB of memory? And what about the number of drives and network and data connections? Whatever your requirements, we have the right model for you.



GAMING

Over 60 frames per second, in highest resolution and with maximum depth of detail guarantee thrilling matches on the screen. The XPC cubes from Shuttle offer space for current Intel Core processors, up to 128 GB of RAM and the latest dual-slot graphics cards. In conjunction with a quick NVMe SSD, you can move on to the next map and a higher level without a long wait. One major advantage of Mini-PCs is their space-saving size. This means that a Shuttle XPC cube can swiftly be stored away in a small bag and then easily set up anywhere.

Robust Panel PCs

15.6" screen, single-touch, resistive

XPC ALL-IN-ONE



X50V7

X50V7U3

CASE CHARACTERISTICS

- Plastic case with integrated touchscreen
- Available in black or white
- Movable stand or 75/100 VESA mount
- Connectors on the side and bottom of the case
- One bay for a 2.5" HDD/SSD
- One slot for an NVMe SSD
- Status LEDs
- Camera with 2 megapixel
- Stereo speakers and microphone
- External power supply
- Fanless cooling
- IP54 protection of front panel
- Ambient temperature range 0–40 °C
- Air humidity range 10–90 %
- 4.2 × 39.1 × 32.7 cm (LWH)

PERFORMANCE FEATURES

Display	1366×768, resistive single-touch screen, 39.6 cm (15.6")	
Processor	Intel Celeron 4205U	Intel Core i3-8145U
Slots	1× M.2-2230, 1× M.2-2280	
Empty slots	1× M.2-2280	
Memory	Up to 2× 16 GB DDR4 SO-DIMM (32 GB)	
Graphics	Intel UHD Graphics 610	Intel UHD Graphics 620
Display connectors	1× HDMI 1.4b, 1× VGA	
Network	1× Gigabit Ethernet (Intel i211), Wi-Fi (ac), Bluetooth	
External connections	4× USB 3.2 Gen 1 (5 Gbit) type A, 2× USB 2.0 type A, audio, mic	
Internal connections	1× USB 2.0 Typ A, 1× SATA	
Drives	1× 2.5" SATA, 1× NVMe, SD-Cardreader	
Power supply	65 Watt, 19 Volt DC	
Supported operating voltage	12 Volt ±5 % und 19 Volt ±5 %	
OS support	Windows 10, Windows 11, Linux (64 Bit)	
Further information	go.shuttle.eu/r6zqb	go.shuttle.eu/qlgm6
Options	1× Parallel + 2× RS-232 or 1× Parallel + 4× RS-232 + 1× DIO	

Robust Panel PCs

15.6" screen, multi-touch, capacitive



XPC ALL-IN-ONE

P51U

P51U3

CASE CHARACTERISTICS

- Plastic case with integrated touchscreen
- Room for internal battery, hours of mobile operation
- Movable stand or 75/100 VESA mount
- Connectors on the side and bottom of the case
- One bay for a 2.5" HDD/SSD
- One slot for an NVMe SSD
- Camera with 2 megapixel
- Stereo speaker and microphone
- Always-On-Funktion
- External power supply
- Fanless cooling
- IP54 protection of front panel
- Ambient temperature range 0–40 °C
- Air humidity range 10–90 %
- 4.0 × 39.4 × 27.3 cm (LWH)

PERFORMANCE FEATURES

Display	1920×1080, capacitive 10-point multi-touch screen, 39.6 cm (15.6")	
Processor	Intel Celeron 4205U	Intel Core i3-8145U
Slots	1× M.2-2230, 1× M.2-2280	
Empty slots	1× M.2-2280	
Memory	Up to 2× 16 GB DDR4 SO-DIMM (32 GB)	
Graphics	Intel UHD Graphics 610	Intel UHD Graphics 620
Display connectors	1× HDMI 1.4b, 1× VGA	
Network	1× Gigabit Ethernet (Intel i211), Wi-Fi (ac), Bluetooth 4.2	
External connections	2× USB 3.2 Gen 1 (5 Gbit) type A, 2× USB 2.0 type A, 2× RS-232, audio, mic	
Internal connections	1× USB 2.0 type A, 1× I ² C, 1× SATA	
Drives	1× 2.5" SATA, 1× NVMe, SD card reader	
Power supply	65 Watt, 19 Volt DC	
Supported operating voltage	12 Volt ±5 % and 19 Volt ±5 %	
OS support	Windows 10, Windows 11, Linux (64 Bit)	
Further information	go.shuttle.eu/kihtn	go.shuttle.eu/u6j2k
Options	NFC module, 2× RS-232, Li-Ion battery	



19.5" screen, multi-touch, capacitive



P92U

P92U3

P92U5

CASE CHARACTERISTICS

Plastic case with integrated touchscreen
Available in black or white
Movable stand or 75/100 VESA mount
Connectors on the side and bottom of the case
One bay for a 2.5" HDD/SSD
One slot for an NVMe SSD
Camera with 2 megapixel
Stereo speaker and microphone
Always on jumper
External power supply
Fanless cooling
IP54 protection of front panel
Ambient temperature range 0–40 °C
Air humidity range 10–90 %
4.4 × 48.7 × 32.1 cm (LWH)

PERFORMANCE FEATURES

Display	1600×900, capacitive 10-point multi-touch screen, 39.6 cm (19.5")		
Processor	Intel Celeron 5205U	Intel Core i3-10110U	Intel i5-10210U
Slots	1× M.2-2230, 1× M.2-2280		
Empty slots	1× M.2-2280		
Memory	Up to 2× 32 GB DDR4 SO-DIMM (64GB)		
Graphics	Intel UHD Graphics for 10th Gen Intel Processors		
Display connectors	1× HDMI 1.4b, 1× VGA		
Network	1× Gigabit Ethernet (Realtek RTL8821CE-CG), Wi-Fi (ac), Bluetooth 4.1		
External connections	4× USB 3.2 Gen 1 (5 Gbit) type A, 2× USB 2.0 type A, audio, mic		
Internal connections	1× USB 2.0 type A, 1× I ² C, 1× SATA		
Drives	1× 2.5" SATA, 1× NVMe, SD card reader		
Power supply	65 Watt, 19 Volt DC		
Supported operating voltage	12 Volt ±5 % and 19 Volt ±5 %		
OS support	Windows 10, Windows 11, Linux (64 Bit)		
Further information	go.shuttle.eu/mDASL	go.shuttle.eu/fZomA	go.shuttle.eu/Ckyac
Options	NFC module, 1× Parallel + 2× RS-232 or 1× Parallel + 4× RS-232 + 1× DIO		

Robust Panel PCs

11.6" screen, multi-touch, capacitive



XPC ALL-IN-ONE

P20U

CASE CHARACTERISTICS

- Plastic case with integrated touchscreen
- Detachable cable collector box
- Movable stand or 75/100 VESA mount
- Connectors on the side and bottom of the case
- One bay for a 2.5" HDD/SSD
- One slot for an NVMe SSD
- Camera with 1 megapixel
- Speaker and microphone
- External power supply
- Fanless cooling
- IP54 protection of front panel
- Ambient temperature range 0–40 °C
- Air humidity range 10–90 %
- 5.0 × 29.9 × 27.1 cm (LWH)

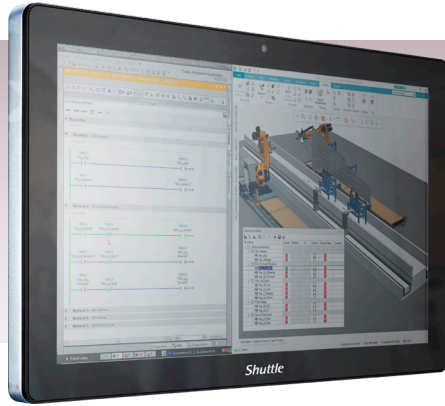
PERFORMANCE FEATURES

Display	1366×768, capacitive 10-point multi-touch screen, 29.5 cm (11.6")
Processor	Intel Celeron 3865U
Slots	1× M.2-2230, 1× M.2-2280
Empty slots	1× M.2-2280
Memory	Up to 2× 16 GB DDR4 SO-DIMM (32 GB)
Graphics	Intel HD Graphics 610
Display connectors	1× HDMI 1.4b, 1× VGA
Network	1× Gigabit Ethernet (Intel i211), Wi-Fi (n), Bluetooth 4.1
External connections	2× USB 3.2 Gen 1 (5 Gbit) type A, 4× USB 2.0 type A, 2× RS-232, audio, mic
Internal connections	1× USB 2.0 type A, I ² C, 1× SATA
Drives	1× 2.5" SATA, 1× NVMe, SD card reader
Power supply	65 Watt, 19 Volt DC
Supported operating voltage	12 Volt ±5 % and 19 Volt ±5 %
OS support	Windows 10, Windows 11, Linux (64 Bit)
Further information	go.shuttle.eu/ayu4z
Options	NFC module, 2× RS-232

Heavy-duty Panel PCs

21.5" screen, multi-touch, capacitive

PANEL-PC



P21WL01

CASE CHARACTERISTICS

Heavy aluminium housing with integrated touch screen
Modular housing
100×100 VESA mount
Connectors on the bottom of the case, protected by cover
One bay for a 2.5" HDD/SSD
One slot for an NVMe SSD
Camera with 2 megapixel
External power supply
Fanless cooling
IP65 protection of front panel
Ambient temperature range 0–40 °C
Air humidity range 20–80 %
4.9 × 54.3 × 33.4 cm (LWH)

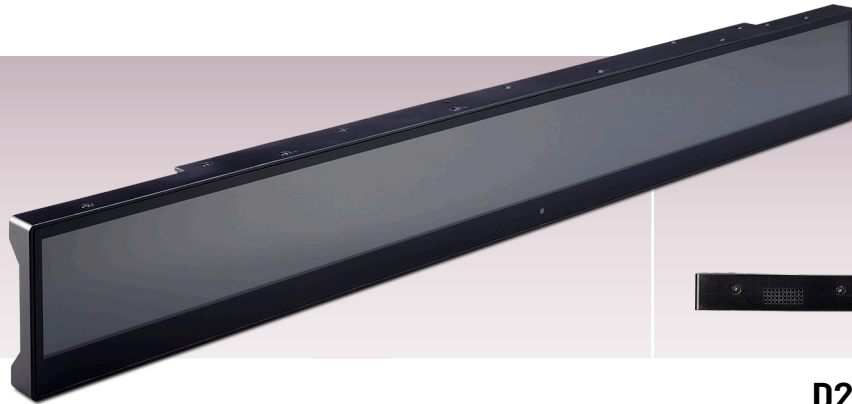
PERFORMANCE FEATURES

Display	1920×1080, capacitive 10-point multi-touch screen, 54.6 cm
Processor	Intel Core i7-8665UE, Intel Core i7-8565U, Intel Core i5-8365UE, Intel Core i5-8265U, Intel Core i3-8145UE Intel Celeron 4305UE
Slots	1× M.2-2230, 1× M.2-2280
Empty slots	1× M.2-2280
Memory	Up to 2× 32 GB DDR4 SO-DIMM (64 GB)
Graphics	Intel HD Graphics 610 or 620 (depending on the selected processor)
Display connectors	1× HDMI 1.4b, 1× DVI-I
Network	2× Gigabit Ethernet (Intel i211, Intel i219LM), Wi-Fi (ac), Bluetooth 4.2
External connections	4× USB 3.2 Gen 1 (5 Gbit) type A, 3× RS-232, audio, mic
Internal connections	1× SATA
Drives	1× 2.5" SATA, 1× NVMe
Power supply	90 Watt, 19 Volt DC
Supported operating voltage	19 Volt ±5 %
OS support	Windows 10, Windows 11, Linux (64 Bit)
Further information	go.shuttle.eu/pe7s2
Options	

Bar-type Displays

Biometric signage solution

SMART
SIGNAGE



CASE CHARACTERISTICS

Plastic case with integrated display
Rail for VESA and clamp mount
Connectors on the side and on the bottom
Camera with 2 megapixel
Speaker
External power supply or PoE power source
Cascading power connections
Fanless cooling
IP54 protection of front panel
Ambient temperature range 0–40 °C
Air humidity range 10–90 %
2.9 × 60.3 × 7.5 cm (LWH)

PERFORMANCE FEATURES

	D230 (Standalone)	D230 (Server-based)
Display	1920×158 (23.1")	
Processor	Rockchip RK3399, Cortex A72 Dual-Core, A53 Quad-Core (ARM)	
Slots	—	M.2-3042 (for LTE module)
Empty slots	—	M.2-3042 (for LTE module)
Memory	2 GB	
Graphics	Mali-T864	
Display connectors	—	
Network	1× Ethernet, Wi-Fi-ac, Bluetooth 5.0	
External connections	1× USB 2.0 Typ A, Audio	
Internal connections	—	
Drives	16 GB Flash, SD card reader	
Power supply	24 Watt, 12 Volt DC or PoE (IEEE 802.3at)	
Supported operating voltage	12 Volt ±5 % and 19,5 Volt ±5 % (PoE 48 Volt)	
Operating system	Android 7.1 ('Nougat')	
Further information	go.shuttle.eu/8ksvw	
Options	Concatenation Accessory Kit	

Heavy-duty Box PCs

BOX-PC



Fanless industrial PC, modular connectors



BPCWL02

CASE CHARACTERISTICS

Multi-reinforced aluminium and steel housing
Individual operating positions, ready for VESA/wall mount
Connectors on the front and rear
One slot for an NVMe SSD
External power supply
Weight 2850 g
Fanless cooling
Ambient temperature range 0–40 °C
Air humidity range 0–90 %
16.9 × 25.5 × 5.7 cm (LWH)

PERFORMANCE FEATURES

Processor	Intel Core i7-8665UE, Intel Core i7-8565U, Intel Core i5-8365UE, Intel Core i5-8265U, Intel Core i3-8145UE, Intel Celeron 4305UE
Slots	1× M.2-2230, 1× M.2-2280
Empty slots	1× M.2-2280
Memory	Up to 2× 32 GB DDR4 SO-DIMM (64 GB)
Graphics	Intel HD Graphics 610 or 620 (depending on the selected processor)
Display connectors	1× HDMI 1.4b (further connections modularly expandable)
Network	2× Gigabit Ethernet (Intel i211, Intel i219LM)
External connections	4× USB 3.2 Gen 1 (5 Gbit) type A, 1× RS-232, audio, mic
Internal connections	—
Drives	1× NVMe
Power supply	90 Watt, 19 Volt DC
Supported operating voltage	19 Volt ±5 %
OS support	Windows 10, Windows 11, Linux (64 Bit)
Further information	go.shuttle.eu/yozeq
Options	Two additional graphics ports, up to three additional COM ports, up to eight additional USB 2.0 ports, DIN rail mount, ear-mount

Compact Embedded PCs

Suitable for control cabinets, fanless



EDGE

EN01J3

EN01J4

CASE CHARACTERISTICS

- Steel chassis for different operating positions
- Desktop PC, ready for VESA-/DIN rail and wall mount
- Connectors on the side and rear
- One slot for an LTE/4G module
- Slot for a nano SIM card
- Recovery-Button (EN01B only)
- Standard Euroblock 2-pin power supply connector
- Status-LED
- Weight 480 g
- Fanless cooling (except EN01B)
- Ambient temperature range -20-65 °C (EN01J3/EN01J4 0-40 °C)
- Air humidity range 10-90 %
- 9.2 × 5.4 × 9 cm (LWH)

PERFORMANCE FEATURES

Processor	Celeron J3355	Pentium J4205
Slots	1× M.2-3032 B	
Empty slots	1× M.2-3032 B	
Memory	4 GB	8 GB
Graphics	Intel HD Graphics 500	Intel HD Graphics 505
Display connectors	1× HDMI 1.4b	
Network	1× Gigabit Ethernet (Realtek RTL8119I-CG)	
External connections	2× USB 3.2 Gen 1 (5 Gbit) type A, 1× Micro USB 2.0	
Internal connections	I/O header with two serial ports, 4× GPIO, I ² C	
Drives	64 GB Flash, SD card reader	
Power supply	—	
Supported operating voltage	12 Volt ±5 % to 19 Volt ±5 %	
OS support	Windows 10, Windows 11, Linux (64 Bit)	
Further information	go.shuttler.eu/mrwc1	go.shuttler.eu/42eor
Options	HDMI capture card, PoE module, PSE module, LTE antennas, power supply	

Robust Mini PCs

1.3 litre format, fanless

XPC SLIM



DS20U

DS20U3

DS20U5

DS20U7

CASE CHARACTERISTICS

Steel chassis for different operating positions
Stand for vertical operation and VESA-/wall mount
Connectors on the front and rear
One bay for a 2.5" HDD/SSD
One slot for an NVMe SSD
Status LEDs
Remote power on connector
Always on jumper
External power supply
Weight 1,430–1,500 g
Fanless cooling
Ambient temperature range 0–40 °C
Air humidity range 10–90 %
20.0 × 16.5 × 3.95 cm (LWH)

PERFORMANCE FEATURES

	DS20U	DS20U3	DS20U5	DS20U7
Processor	Intel Celeron 5205U	Intel Core i3-10110U	Intel Core i5-10210U	Intel Core i7-10510U
Slots		1× M.2-2230, 1× M.2-2280		
Empty slots		1× M.2-2230, 1× M.2-2280		
Memory		Up to 2× 32 GB DDR4 SO-DIMM (64 GB)		
Graphics		Intel UHD Graphics		
Display connectors		1× HDMI 2.0b, 1× DisplayPort 1.2, 1× VGA		
Network		2× Gigabit Ethernet (Intel i211 + i219LM)		
External connections	4× USB 3.2 Gen 1 (5 Gbit) type A, 4× USB 2.0 type A, 1× RS-232, audio, mic, Wi-Fi antennas	4× USB 3.2 Gen 2 (10 Gbit) type A, 4× USB 2.0 type A, 1× RS-232, audio, mic, Wi-Fi antennas		
Internal connections		1× SATA		
Drives		1× 2.5" SATA, 1× NVMe, SD card reader		
Power supply		65 Watt, 19 Volt DC		
Supported operating voltage		12 Volt ±5 % and 19 Volt ±5 %		
OS support		Windows 10, Windows 11, Linux (64 Bit)		
Further information	go.shuttle.eu/vcKHN	go.shuttle.eu/Fxplu	go.shuttle.eu/VZq5Q	go.shuttle.eu/jborN
Options	WiFi ac & Bluetooth module, LTE kit, DIN rail mount, 19" 2U rack mount kit, cable for external power button			

Robust Mini PCs

1.3 litre format, fanless



XPC SLIM

DL20N

DL20N6

CASE CHARACTERISTICS

- Steel chassis for different operating positions
- Desktop PC, ready for VESA- / wall mount
- Connectors on the front and rear
- One bay for a 2.5" HDD/SSD
- One slot for an NVMe SSD
- Status LEDs
- Remote power on connector
- Always on jumper
- External power supply
- Weight 1,300 g
- Fanless cooling
- Ambient temperature range 0–40 °C
- Air humidity range 10–90 %
- 19.0 × 16.5 × 4.3 cm (LWH)

PERFORMANCE FEATURES

	DL20N	DL20N6
Processor	Intel Celeron N4505	Intel Pentium Silver N6005
Slots	1× M.2-2230, 1× M.2-2280	
Empty slots	1× M.2-2280	
Memory	Up to 2× 8 GB DDR4 SO-DIMM (16 GB)	
Graphics	Intel UHD Graphics	
Display connectors	1× HDMI 2.0b, 1× DisplayPort 1.4a, 1× VGA	
Network	1× Gigabit Ethernet (Intel i211)	
External connections	2× USB 3.2 Gen 2 (10 Gbit) type A, 2× USB 3.2 Gen 1 (5 Gbit) type A, 2× USB 2.0 type A, 2× RS-232, audio, mic,	
Internal connections	1× SATA	
Drives	1× 2.5" SATA, 1× NVMe, SD card reader	
Power supply	40 Watt, 19 Volt DC	
Supported operating voltage	12 Volt ±5 % and 19 Volt ±5 %	
OS support	Windows 10, Windows 11, Linux (64 Bit)	
Further information	go.shuttle.eu/ZNxKL	go.shuttle.eu/c274H
Options	Wi-Fi (ac) & Bluetooth, LTE kit, DIN rail mount, vertical stand, 19" 2U rack mount kit, cable for external power button	

Robust Mini PCs

1.3 litre format, heatpipe cooling

XPC SLIM



DA320

CASE CHARACTERISTICS

Steel chassis for different operating positions
Desktop PC, ready for VESA-/ wall mount
Connectors on the front and rear
One bay for a 2.5" HDD/SSD
One slot for an NVMe SSD
Status LEDs
Remote power on connector
Always on jumper
External power supply
Weight 1,300 g
Heatpipe cooling
Two linear controlled fans (60 mm)
Ambient temperature range 0–50 °C
Air humidity range 10–90 %
19.0 × 16.5 × 4.3 cm (LWH)

PERFORMANCE FEATURES

Processor socket	Socket AM4, TDP max. 65 Watt
Processor compatibility	AMD APUs of the Ryzen 2000/3000 R5 / R3 and Athlon 2000 series
Slots	1× M.2-2230, 1× M.2-2280
Empty slots	1× M.2-2230, 1× M.2-2280
Memory	Up to 2× 16 GB DDR4 SO-DIMM (32 GB)
Graphics	Integrated in processor
Display connectors	1× HDMI 2.0a, 2× DisplayPort 1.2
Network	2× Gigabit Ethernet (Realtek RTL8111H)
External connections	6× USB 3.2 Gen 1 (5 Gbit) type A, 1× USB 2.0 type A, audio, mic
Internal connections	VGA, 1× SATA
Drives	1× 2.5" SATA, 1× NVMe, SD card reader
Power supply	120 Watt, 19 Volt DC
Supported operating voltage	19 Volt ±5 %
OS support	Windows 10, Windows 11, Linux (64 Bit)
Further information	go.shuttle.eu/pw79v

Options	VGA connector, Wi-Fi (ac) & Bluetooth, LTE kit, DIN rail mount, vertical stand, 19" 2U rack mount kit, cable for external power button
---------	--

Robust Mini PCs

1.3 litre format, heatpipe cooling



DH470



DH410S



DH410

XPC SLIM

PERFORMANCE FEATURES

Processor socket	LGA 1200, TDP max. 65 Watt		
Processor compatibility	Intel Core i3/i5/i7/i9, Pentium, Celeron (10 th Generation, 'Comet Lake')		
Slots	1× M.2-2230, 1× M.2-2280		
Empty slots	1× M.2-2230, 1× M.2-2280		
Memory	Up to 2× 32 GB DDR4 SO-DIMM (64 GB)		
Graphics	Integrated in processor		
Display connectors	1× HDMI 2.0a, 2× DisplayPort 1.2	1× HDMI 1.4b, 1× DisplayPort 1.2	1× HDMI 2.0a, 1× DisplayPort 1.2
Network	2× Gigabit Ethernet (Intel i210-AT)	1× Gigabit Ethernet (Realtek 8111H)	2× Gigabit Ethernet (Intel i210-AT)
External connections	4× USB 3.2 Gen 2 (10 Gbit) type A, 3× USB 3.2 Gen 1 (5 Gbit) type A, 1× USB 3.2 Gen 1 (5 Gbit) type C, 2× RS-232, audio, mic	3× USB 3.2 Gen 1 (5 Gbit) Typ A, 1× USB 3.2 Gen 1 (5 Gbit) Typ C, 4× USB 2.0 Typ A, audio, mic	4× USB 3.2 Gen 1 (5 Gbit) type A, 4× USB 2.0 type A, 2× RS-232, audio, mic
Internal connections	VGA, 1× SATA		
Drives	1× 2.5" SATA, 1× NVMe, SD card reader		
Power supply	90 Watt, 19 Volt DC		
Supported operating voltage	19 Volt ±5 %		12 Volt ±5 % and 19 Volt ±5 %
OS support	Windows 10, Windows 11, Linux (64 Bit)		
Further information	go.shuttle.eu/ln1p	go.shuttle.eu/a0fns	go.shuttle.eu/hk1la
Options	VGA connector, Wi-Fi (ac) & Bluetooth, LTE kit, DIN rail mount, vertical stand, 19" 2U rack mount kit, cable for external power button	VGA connector, Wi-Fi (ac) & Bluetooth, LTE kit, VESA mount, DIN rail mount, vertical stand, 19" 2U rack mount kit, cable for external power button	VGA connector, Wi-Fi (ac) & Bluetooth, LTE kit, DIN rail mount, vertical stand, 19" 2U rack mount kit, cable for external power button

1.3 litre format, multi-screen support

XPC SLIM



DH02U

DH32U

DH32U5

CASE CHARACTERISTICS

Steel chassis for different operating positions
Desktop PC, ready for VESA-/ wall mount
Connectors on the front and rear
One bay for a 2.5" HDD/SSD
One slot for an NVMe SSD
Status LEDs
Remote power on connector
Always on jumper
External power supply
Weight 1,030 g
Heatpipe cooling
Two linear controlled fans (60 and 50 mm)
Ambient temperature range 0–50 °C
Air humidity range 10–90 %
19.0 × 16.5 × 4.3 cm (LWH)

PERFORMANCE FEATURES

	DH02U	DH32U	DH32U5
Processor	Intel Celeron 3865U	Intel Pentium Gold 7505	Intel Core i5-1135G7
Slots		1× M.2-2230, 1× M.2-2280	
Empty slots		1× M.2-2230, 1× M.2-2280	
Memory	Up to 2× 16 GB DDR4 SO-DIMM (32 GB)	Up to 2× 32 GB DDR4 SO-DIMM (64 GB)	
Graphics	NVIDIA GeForce GTX 1050, 4 GB	Intel UHD Graphics for 11 th Gen Intel Core™ Processors	
Display connectors		4× HDMI 2.0b	
Network	1× Gigabit Ethernet (Intel i211)	2× Gigabit Ethernet (Intel i210)	
External connections	4× USB 3.2 Gen 1 (5 Gbit) type A, 2× USB 2.0 type A, 1× RS-232, audio, mic	4× USB 3.2 Gen 1 (10 Gbit) type A, 4× USB 3.2 Gen 1 (5 Gbit) type A, 2× RS-232, audio, mic	
Internal connections		Audio I/O, VGA, 1× SATA	
Drives	1× 2.5" SATA, 1× NVMe	1× 2.5" SATA, 1× NVMe, SD card reader	
Power supply	120 Watt, 19 Volt DC	90 Watt, 19 Volt DC	
Supported operating voltage		19 Volt ±5 %	
OS support		Windows 10, Windows 11, Linux (64 Bit)	
Further information	go.shuttle.eu/p4oje	go.shuttle.eu/bThZN	go.shuttle.eu/AKms3
Options	Wi-Fi (ac) & Bluetooth, DIN rail mount, vertical stand, 19" 2U rack mount kit, cable for external power button		

Robust Mini PCs

3 litre format, heatpipe cooling



XPC SLIM

XH310R

XH310RV

XH410G

CASE CHARACTERISTICS

- Steel chassis for different operating positions
- Desktop PC, ready for VESA- / wall mount
- Connectors on the front and rear
- One to four 2.5" drive bays (SSD/HDD)
- One slot for an NVMe SSD
- One bay for an optical slimline drive (except XH110G)
- Status LEDs
- Remote power on connector (depending on model)
- Always on jumper
- External power supply
- Weight 2,200 g
- Heatpipe cooling
- Two linear controlled fans (60 mm)
- Ambient temperature range 0–50 °C
- Air humidity range 10–90 %
- 23.8 × 20.0 × 7.25 cm (LWH)

PERFORMANCE FEATURES

Processor socket	LGA 1151v2, TDP max. 65 Watt	LGA 1200, TDP max. 65 Watt
Processor compatibility	Intel Core i3/i5/i7/i9, Pentium, Celeron (8 th /9 th Generation, 'Coffee Lake')	
Slots	1× M.2-2230, 1× M.2-2280	1× M.2-2230, 1× M.2-2280, 1× PCI-Express-×16-3.0
Empty slots	1× M.2-2230, 1× M.2-2280	1× M.2-2230, 1× M.2-2280, 1× PCI-Express-×16-3.0
Memory	Up to 2× 16 GB DDR4 SO-DIMM (32 GB)	Up to 2× 32 GB DDR4 SO-DIMM (64 GB)
Graphics	Integrated in processor	
Display connectors	1× HDMI 2.0a, 1× DisplayPort 1.2, 1× VGA	1× HDMI 2.0a, 1× VGA
Network	2× Gigabit Ethernet (Intel i211)	1× Gigabit Ethernet (Intel i219LM)
External connections	4× USB 3.2 Gen 1 (5 Gbit) type A, 4× USB 2.0 type A, 2× RS-232, audio, mic	4× USB 3.2 Gen 1 (5 Gbit) type A, 4× USB 2.0 type A, audio, mic
Internal connections	1× USB 2.0, eDP, 3× SATA, 2× RS-232, LPC	1× SATA
Drives	2× 2.5" SATA, 1× Slimline SATA, 1× NVMe	1× 2.5" SATA, 1× NVMe
Power supply	90 Watt, 19 Volt DC	
Supported operating voltage	12 Volt ±5 % and 19 Volt ±5 %	
OS support	Windows 10, Windows 11, Linux (64 Bit)	
Further information	go.shuttle.eu/1o6yk	go.shuttle.eu/82f0s
Options	Wi-Fi (ac) & Bluetooth, vertical stand, VESA mount, 3× RS-232, 3.5" HDD rack, cable for external power button	Wi-Fi (ac) & Bluetooth, vertical stand, VESA mount, 3.5" HDD rack, cable for external power button
		Wi-Fi (ac) & Bluetooth, RS-232, vertical stand, cable for external power button

Cube format

Compact workstations, heatpipe cooling



XPC CUBE



SH510R4

SH570R6

SH570R6 Plus

CASE CHARACTERISTICS

Aluminium case
Desktop PC
Connectors on the front and rear
2 Bays for 3.5" HDD/SSD (4 Bays for 2.5" HDD/SSD with optional drive holder)
One slot for an NVMe SSD
One bay for optical 5.25" drive
Status LEDs
Remote power on connector (depending on model)
Internal power supply
Weight 3,500 g
Heatpipe cooling
One linear controlled fan (92 mm)
Ambient temperature range 0-40 °C
Air humidity range 10-90 %
33.2 × 21.5 × 19.0 cm (LWH)

PERFORMANCE FEATURES

Processor socket	LGA 1200, TDP max. 125 Watt	
Processor compatibility	Intel Core i3/i5/i7/i9, Pentium, Celeron (10 th /11 th Generation, 'Comet Lake' & 'Rocket Lake')	
Slots	1× M.2-2230, 1× M.2-2280, 1× PCIe-×16-4.0, 1× PCIe-×1-3.0	1× M.2-2230, 1× M.2-2280, 1× PCIe-×16-3.0, 1× PCIe-×4-4.0
Empty slots	1× M.2-2230, 1× M.2-2280, 1× PCIe-×16-4.0, 1× PCIe-×1-3.0	1× M.2-2230, 1× M.2-2280, 1× PCIe-×16-3.0, 1× PCIe-×4-3.0
Memory	Up to 2× 32 GB DDR4 DIMM (64 GB)	Up to 4× 32 GB DDR4 DIMM (128 GB)
Graphics	Integrated in processor	
Display connectors	1× HDMI 2.0b, 1× DisplayPort 1.4, 1× VGA	1× HDMI 2.0b, 2× DisplayPort 1.4
Network	1× Gigabit Ethernet (Intel i219LM)	2× Gigabit Ethernet (Intel i210AT, Intel i219LM Phy)
External connections	4× USB 3.2 Gen 1 (5 Gbit) type A, 4× USB 2.0 type A, audio, mic, Remote-Power-On	4× USB 3.2 Gen 2 (10 Gbit) type A, 4× USB 3.2 Gen 1 (5 Gbit) type C, 3× USB 3.2 Gen 1 (5 Gbit) type A, 4× USB 2.0 type A, audio, mic
Internal connections	1× RS-232, 1× USB 2.0, 4× SATA, fan connector	RS-232, 2× USB 2.0, 4× SATA, fan connector
Drives	3× 2.5" SATA/2× 3.5" SATA/1× 5.25" SATA, 1× NVMe	4× 2.5" SATA/2× 3.5" SATA/1× 5.25" SATA, 1× NVMe
Power supply	300 Watt	500 Watt
Supported operating voltage	100 Volt to 240 Volt	
OS support	Windows 10, Windows 11, Linux (64 Bit)	
Further information	go.shuttle.eu/ZI8of	go.shuttle.eu/C3QHi go.shuttle.eu/cyF6p
Options	PSU 500 Watt, RS-232, Wi-Fi (ac) & Bluetooth, 2.5" HDD/SSD expansion frame, cable for external power button	RS-232, Wi-Fi (ac) & Bluetooth, 2.5" HDD/SSD expansion frame

Compact mini server, for 4 HDDs



XPC CUBE

SZ270R8

SH370R8

SH570R8

CASE CHARACTERISTICS

Aluminium case
Desktop PC
Connectors on the front and rear
4 bays for 3.5" HDD/SSD (alternatively 2.5" HDD/SSD with optional drive holder)
One to two slots for NVMe SSDs
Status LEDs
Remote power on connector (depending on model)
Internal power supply
Weight 3,500 g
Heatpipe cooling
Two linear controlled fans (92 mm and 80 mm)
Ambient temperature range 0–40 °C
Air humidity range 10–90 %
33.2 × 21.5 × 19.0 cm (LWH)

PERFORMANCE FEATURES

Processor socket	LGA 1151, TDP max. 95 Watt	LGA 1151v2, TDP max. 95 Watt	LGA 1200, TDP max. 125 Watt
Processor compatibility	Intel Core i3/i5/i7, Pentium, Celeron (6 th /7 th Generation, 'Skylake/Kaby Lake')	Intel Core i3/i5/i7/i9, Pentium, Celeron (8 th /9 th Generation, 'Coffee Lake')	Intel Core i3/i5/i7/i9, Pentium, Celeron (10 th /11 th Generation, 'Comet Lake' & 'Rocket Lake')
Slots	1× M.2-2230, 2× M.2-2280, 1× PCIe-×16-3.0, 1× PCIe-×4-3.0	1× M.2-2230, 1× M.2-2280, 1× PCIe-×16-3.0, 1× PCIe-×4-3.0	1× M.2-2230, 1× M.2-2280, 1× PCIe-×16-3.0, 1× PCIe-×4-4.0
Empty slots	1× M.2-2230, 2× M.2-2280, 1× PCIe-×16-3.0, 1× PCIe-×4-3.0	1× M.2-2230, 1× M.2-2280, 1× PCIe-×16-3.0, 1× PCIe-×4-3.0	1× M.2-2230, 1× M.2-2280, 1× PCIe-×16-3.0, 1× PCIe-×4-3.0
Memory	Up to 4× 32 GB DDR4 DIMM (128 GB)		
Graphics	Integrated in processor		
Display connectors	1× HDMI 1.4b, 2× DisplayPort 1.2	1× HDMI 2.0a, 2× DisplayPort 1.2	1× HDMI 2.0b, 2× DisplayPort 1.4
Network	2× Gigabit Ethernet (Intel i211)		2× Gigabit Ethernet (Intel i210AT, Intel i219LM Phy)
External connections	6× USB 3.2 Gen 1 (5 Gbit) type A, 4× USB 2.0 type A, audio, mic	4× USB 3.2 Gen 2 (10 Gbit) type A, 4× USB 3.2 Gen 1 (5 Gbit) type A, 2× USB 2.0 type A, audio, mic	4× USB 3.2 Gen 2 (10 Gbit) type A, 1× USB 3.2 Gen 1 (5 Gbit) type C, 3× USB 3.2 Gen 1 (5 Gbit) type A, 4× USB 2.0 type A, audio, mic
Internal connections	1× RS-232, 2× USB 2.0, 4× SATA, fan connector		
Drives	4× 2.5"/3.5" SATA, 2× NVMe	4× 2.5"/3.5" SATA, 1× NVMe	
Power supply	500 Watt		
Supported operating voltage	100 Volt to 240 Volt		
OS support	Windows 10, Windows 11, Linux (64 Bit)		
Further information	go.shuttle.eu/rvs5g	go.shuttle.eu/f5v8r	go.shuttle.eu/3Fvr4
Options	RS-232, Wi-Fi (ac) & Bluetooth, 2.5" HDD/SSD expansion frame		

Compact Desktop PCs

Space-saving format

XPC NANO



NC10U

NC10U3

NC10U5

NC10U7

CASE CHARACTERISTICS

- Plastic case for different operating positions
- Stand for vertical operation and VESA-/wall mount
- Connectors on the front, side and rear
- One bay for a 2.5" HDD/SSD
- One slot for an NVMe SSD
- Status LEDs
- Always on jumper
- External power supply
- Weight 400 g
- Heatpipe cooling
- One linear controlled fan (50 mm)
- Ambient temperature range 0–40 °C
- Air humidity range 10–90 %
- 14.2 × 14.2 × 4.2 cm (LWH)

PERFORMANCE FEATURES

	NC10U	NC10U3	NC10U5	NC10U7
Processor	Intel Celeron 4205U	Intel Core i3-8145U	Intel Core i5-8265U	Intel Core i7-8565U
Slots		1× M.2-2230, 1× M.2-2280		
Empty slots		1× M.2-2280		
Memory		Up to 2× 16 GB DDR4 SO-DIMM (32 GB)		
Graphics	Intel UHD Graphics 610	Intel UHD Graphics 620		
Display connectors		1× HDMI 2.0a, 1× DisplayPort 1.2		
Network		1× Gigabit Ethernet (Intel i211), Wi-Fi (n)		
External connections		1× USB 3.2 Gen 1 (5 Gbit) type A, 1× USB 3.2 Gen 1 (5 Gbit) type C, 2× USB 2.0 type A, 1× RS-232, audio/mic combo		
Internal connections		1× SATA		
Drives		1× 2.5" SATA, 1× NVMe, SD card reader		
Power supply		65 Watt, 19 Volt DC		
Supported operating voltage		19 Volt ±5 %		
OS support		Windows 10, Windows 11, Linux (64 Bit)		
Further information	go.shuttle.eu/47yk0	go.shuttle.eu/dse2m	go.shuttle.eu/d2jpc	go.shuttle.eu/k4b5l
Options	Wi-Fi (ac) & Bluetooth, DIN rail mount			

Compact Embedded PCs



Android-based, fanless



NS02AV2

NS02EV2

XPC NANO

CASE CHARACTERISTICS

- Plastic case for different operating positions
- Desktop PC, ready for VESA-/wall mount
- Connectors on the front and rear
- Status LEDs
- Remote power on connector
- External power supply or PoE power source
- Weight 270 g
- Fanless cooling
- Ambient temperature range 0–40 °C
- Air humidity range 10–90 %
- 14.1 × 14.1 × 2.9 cm (LWH)

PERFORMANCE FEATURES

Processor	Rockchip RK3368 Octa-Core Cortex-A53 (ARM)	
Slots	—	
Empty slots	—	
Memory	2 GB DDR3L	4 GB DDR3L
Graphics	PowerVR SGX6110	
Display connectors	1× HDMI 2.0	
Network	1× Gigabit Ethernet (Realtek RTL8211F-CG), Wi-Fi (n), Bluetooth 5.0	
External connections	4× USB 2.0 type A, Audio	
Internal connections	—	
Drives	16 GB Flash, SD card reader	
Power supply	24 Watt, 12 Volt DC	PoE (IEEE 802.3at)
Supported Operating Voltage	12 Volt ±5 %	36-57 Volt
Operating system	Android 8.1 ('Oreo')	
Further information	go.shuttle.eu/eUZPg	go.shuttle.eu/KRaDw
Options	DIN rail mount	

* Errors, technical specifications subject to change. All brand names are property of their respective owners.



Shuttle Computer Handels GmbH · Fritz-Strassmann-Str. 5 · 25337 Elmshorn · Germany
Phone: +49 (0)4121-476 860 · E-Mail: sales@shuttle.eu

V1/2022

www.shuttle.eu