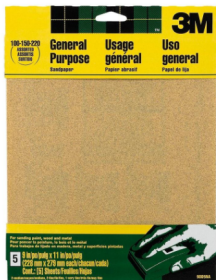


Drawing Heads and Portraits

With Kevin Wueste

Materials I like..

- Tombow B, 2b-4b Graphite Pencils (wood encased)
- Staedtler 2mm clutch pencil and HB, B and 2b leads
- Staedtler barrel sharpener for the above
- Fine grit sandpaper (hardware store – suggest 100 grain+)
- Aformat long-lead pencil sharpeners



3M >
9 in. x 11 in. 100, 150, 220 Grit Medium,
Fine and Very Fine Aluminum Oxide Sand
Paper (5 Sheets-Pack)

★★★★★ (51) Write a Review Questions & Answers (5)

- Assorted pack perfect for skipping grits between sanding steps
- Use on paint, wood, metal, plastic, fiberglass, drywall or more
- Use with sanding blocks, tools, or by hand

\$2.96
/package

Save up to \$100* on your qualifying purchase.
Apply for a Home Depot Consumer Card

How to Get It



Smooth and even

Roll over image to zoom in



Materials



Blick Studio Hardbound Sketchbook

4.8 106 Reviews | Write A Review

SAVE 39-53% off List!

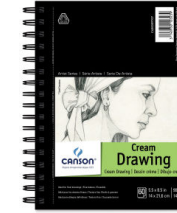
\$8.55 - \$8.95

Just the thing for those quick sketches and drawings, in the studio or in the field. This economical yet high-quality sketchbook contains 108 pages of acid-free, cream-colored 65 lb (98 gsm) paper with excellent tooth for all dry media techniques. The pages are bound in a durable hea...

[+ READ MORE](#)

Browse Related :

- Blick Studio Sketch Pads
- Blick Wirebound Sketchbook



Canson Artist Series Drawing Books

4.5 13 Reviews | Write A Review

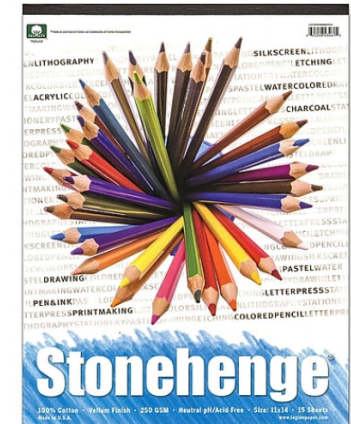
\$9.05 - \$15.80

Canson Artist Series Drawing Books feature a heavyweight sketch paper that is smudge-resistant and erases cleanly. The paper is a classic cream color with a nice tooth for graphite, colored pencils, and pen-and-ink. Each wirebound book holds 60 sheets of 90 lb (147 gsm) true size paper that is micro-perforated for easy removal. These books also feature a removable half sheet with tips and techniques from some of the most noted artists of the day. After removal, the sheet can be used as a bookmark.

[- READ LESS](#)

[Item Specs](#)

- Sketchbook – Blick/Utrecht plan white paper sketchbooks are “ok” ;-)- solid quality
- Sketchbook – Canson artist Series books – 90lb paper higher Quality vs the blick book.. But a bit more tooth..
- Drawing Papers – Stonehenge white and “rising” papers – excellent!
- Drawing papers – Strathmore 400 Drawing (cream) and Canson Drawing paper – both are excellent. (good for graphite and charcoals). - see the example – note that there are zillions “” of these papers and 500 is NOT better ..
- I like to buy at Jerrysartarama and Blinks.. If you can – support you local art store.. (Michaels is a last resort!)..
- **Toned papers:** for charcoals: Canson Mi Tientes (grey middle tones like: Steel grey, Felt Grey, Sky Blue and light blue) – or a pad of Strahmore artagain toned paper (will have many tones – but start with greys.. – this is a good paper for graphite and white chalk (generals “white Charcoal”)



Mi-Tientes
Steel Grey

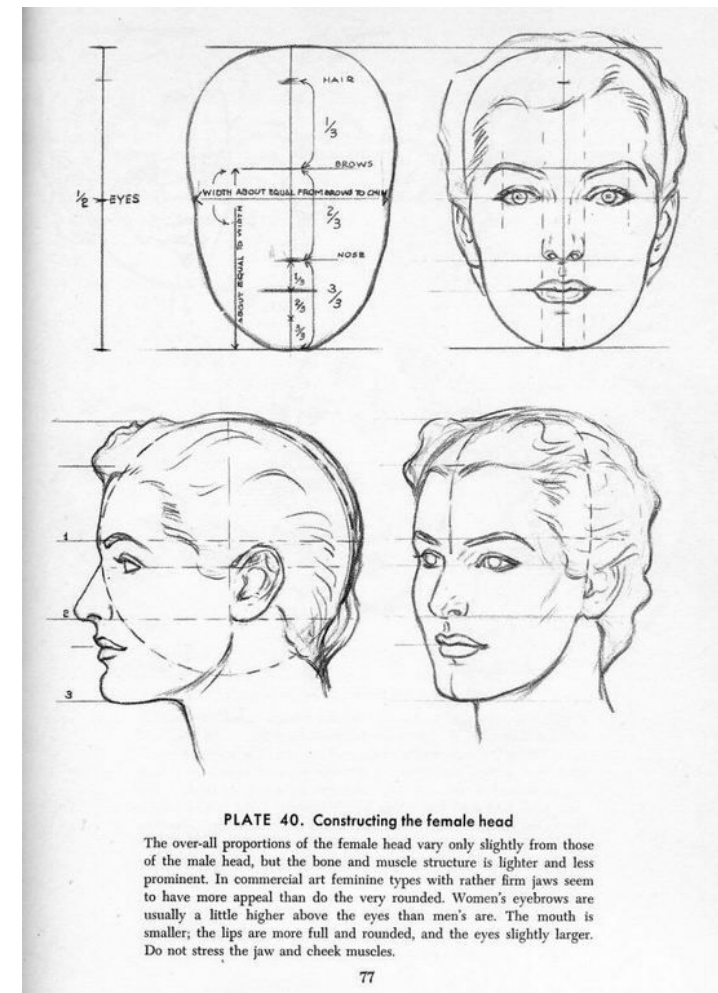
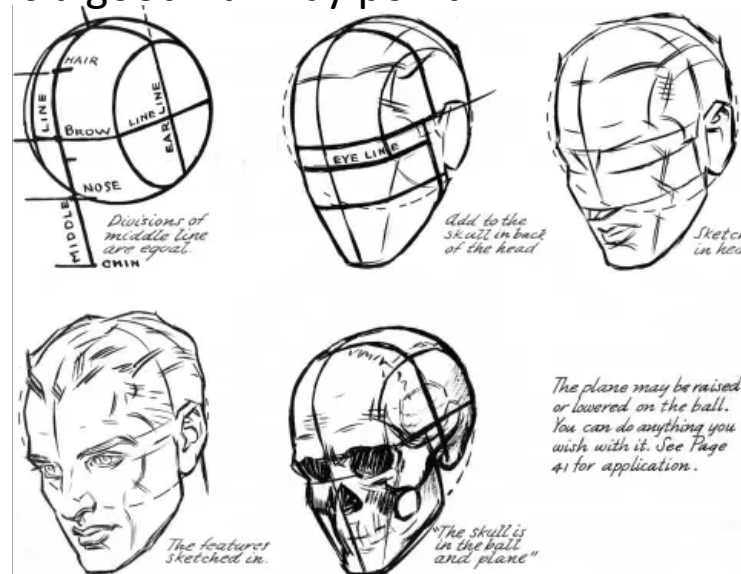
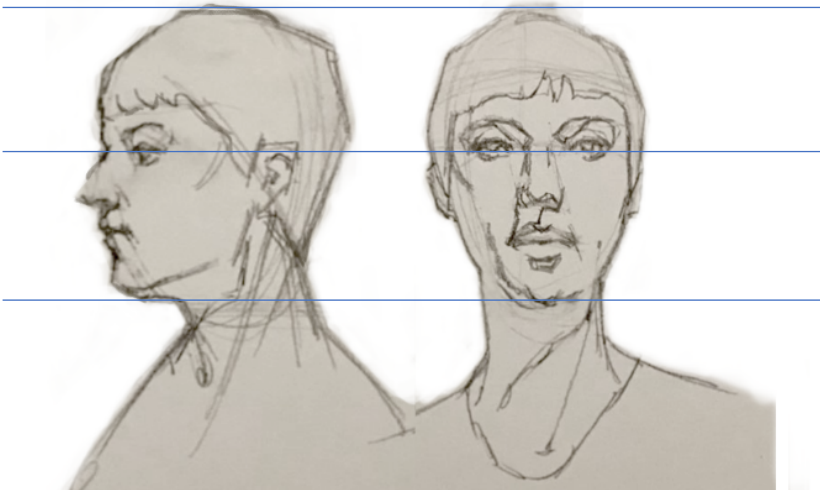
Basics of head construction:

The head is basically an oval; It's wider from the profile view

- The Inner tear-duct is a good half-way point from crown to chin.
 1. The hairline to the brow ridge = $\frac{1}{3}$
 2. Brow-ridge to bottom of nose = $\frac{1}{3}$
 3. Bottom of nose to chin = $\frac{1}{3}$

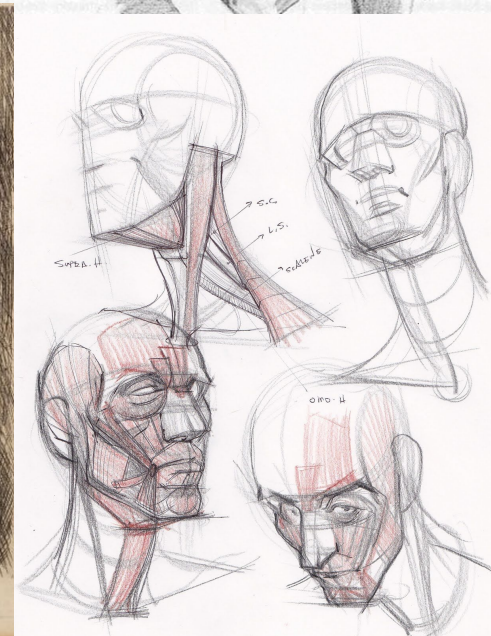
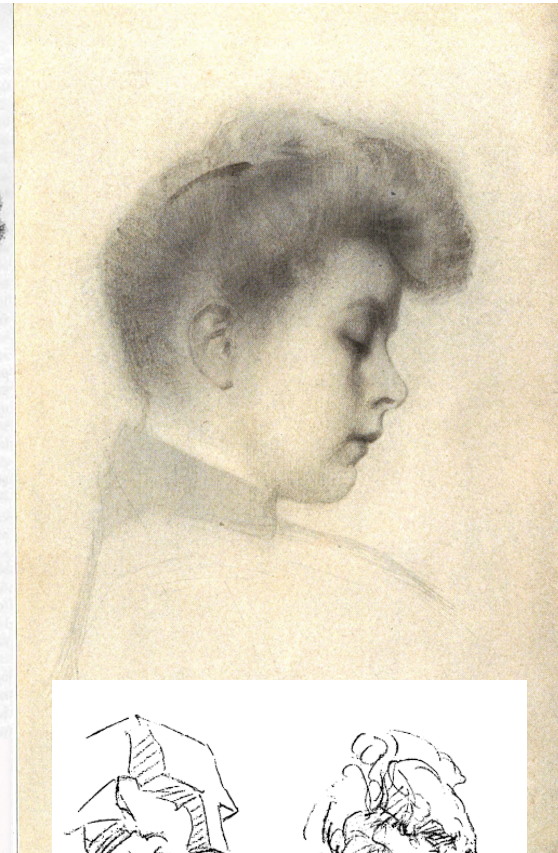
The ear tends to line up with the eyelid (top) and bottom of nose (bottom)

In a profile the back of eye, to front of ear is a good halfway point – then to back of skull/hair.



Who to look to for master copies and ideas and inspiration ?

- Andrew Loomis – one of the fathers of modern drawing and measuring standards.
- George Bridgman – Art Students League teacher – constructionist
- John H. Vanderpoel – classicist.
- Steven Hampton – Modern “blender”
- Also: Glen Orbik, Anthony Ryder, Russian and Chinese masters, Anders Zorn, John Singer Sargent, Charles Dan Gibson, Norman Rockwell



Next week's homework:

- Graphite drawing on white paper from one of the provided references
- Suggest that everyone prints the photo (do not draw from ipad/computer – it will hinder you not help you at the beginning)
- Print in black and white – even if color reference!
- Measure to find half-way points
- Map in your contours and shadow-shapes
 - Shadows may have a medium tone – but nothing super dark.
 - Use HB, B and 2b or 3b Pencils. Kneaded eraser. No blending of anything needed – don't be tempted to grab Kleenex, swabs etc.. Just pencil and eraser ;-)
- Spend about 1-3 hours. No tracing – I'll know and it's not any use for learning !!!
- Homework is due Wednesday following class by 6pm PST - so I have time to critique them by the following Sunday.

