

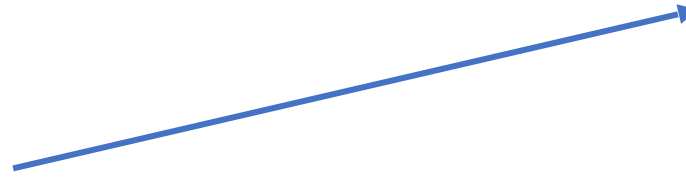
Week 2 Discussion and demonstration:

Week 2: Shadow and light: how to think about the idea of realism and the head/portrait using a single light source. Hatching and volume and Hair (time allowing) will be explored.

Kevin M. Wueste

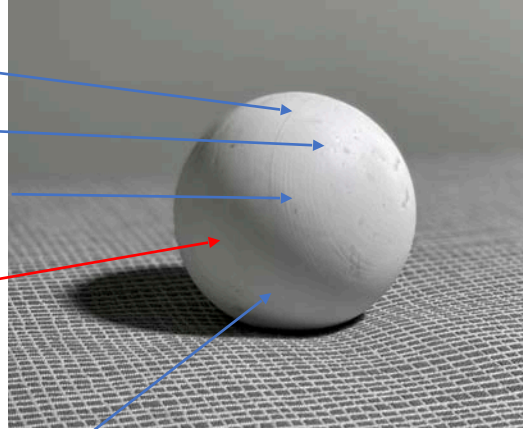
How you should be drawing..

- Vertical is best!
 - Richeson table-top easel – a rock! As in: stable!
- Drafting table or portable is second best! –
 - Pro-draft portable drafting table designed by Martin.
- Flat is worst best!
 - Either of the above is a minor investment and will serve drawing, watercolor, oil etc



The components of light:

1. Light
2. Highlight
3. Middle-tone /half-tone
 1. I call it “transitional”
4. Shadow
5. Reflected light (almost never as bright as anything in the light!)



These are the key values needed to create dimensional drawings.

Note: becoming skilled at Value Scales,

Gradients and Spheres (or an Egg) are good practice !! In each medium – it will help you learn your tools!

- Value Scale
- Gradient Scale
- Sphere with Single Light Source



Graphite on UK Cartridge paper. 1 hour.

A note on blending and graphite handling:

- I don't blend with graphite
- No stumps, paper towels, brushes, tortillons..
- I use a sharp pencil and pointy kneaded eraser.
 - Sometimes on toned paper I will use a soft brush to drop edges.
- The problem with blending is it destroys control and can break your nice gradations into big blobs of grey.
- To avoid “shine” of graphite early in your drawings – work in gentle layers, from harder pencils to softer, later.
 - You cannot totally avoid it.. As graphite is a lubricant. But you can limit it.

Can you spot
the 5 values
here ?
(hint, there's
probably
several
hundred
values ! 😊



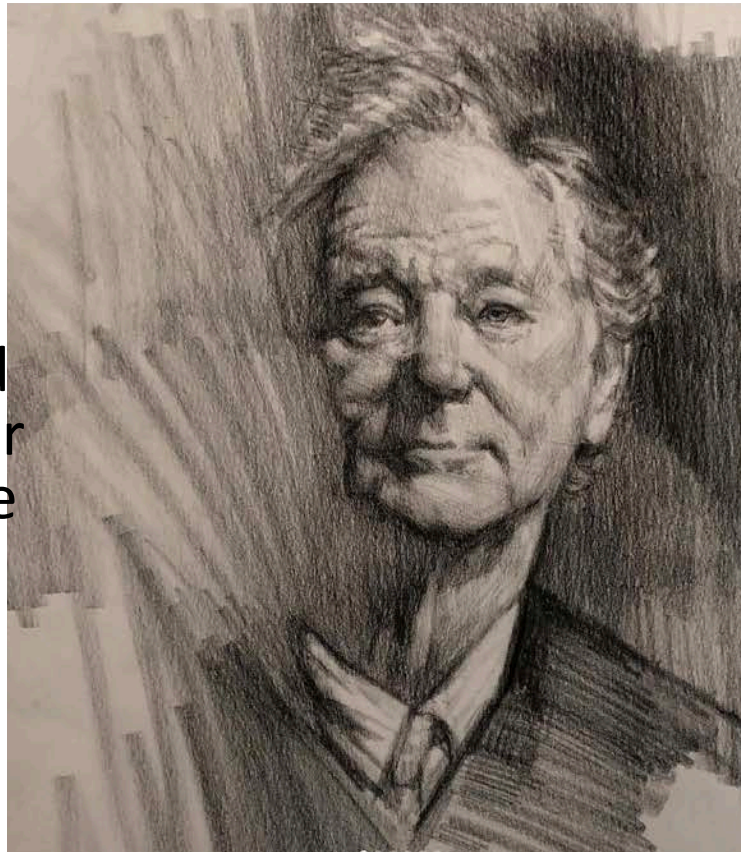
Value thoughts..

- To make a light thing – have a dark thing near by
- Terminators are “fuzzy but clear” and gradate slightly more subtly toward the light..
- Values are **wide** from the edge of shadow to the light
- Values are **narrow** in shadow
- The human form (head, body, etc.,) is **ALWAYS** turning – away from the light or from the shadow.



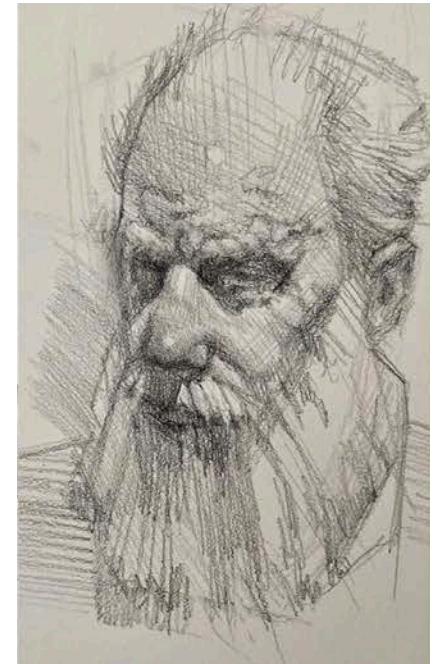
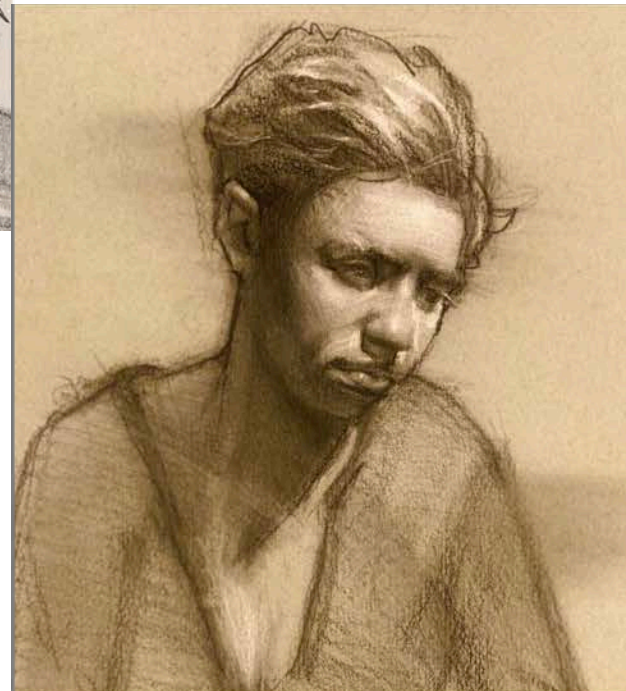
Terminators.. Core Shadows.. Form Shadow Edges..

- A terminator is the edge of a form where light is no longer present. (NASA orig.,)
- Terminators are an art-form unto themselves.. They are thin, thick, fuzzy, lost, found and everything in between..
- They cross bone, muscle and tendon and change character depend on the texture of the form.



Hair – Masses of volume and light

- Do – draw masses of value and shape
- Do use dark hair as a shadow shape
- Highlights are zigzag-y (not so bright on dark hair!)
- Yes there can be terminators on hair
- Blonde hair needs darks nearby (background) to look brighter..



Artists to consider –part II

- Robert McGinnis
- Robert McGuire
- Michael Johnson
- Coby Whitmore



Week 3 homework :

- Value and hair focus.. It's ok if you do less as long as what you DO shows careful consideration for the form and value..
- Get a nice block-in
- Render a shape to completion..
- Do the next one..
- *3-5 hours suggested. Graphite on white paper. A sphere and 5 value scale are recommended (small in the corner opposite of your hand). References will be available later by tomorrow.*

