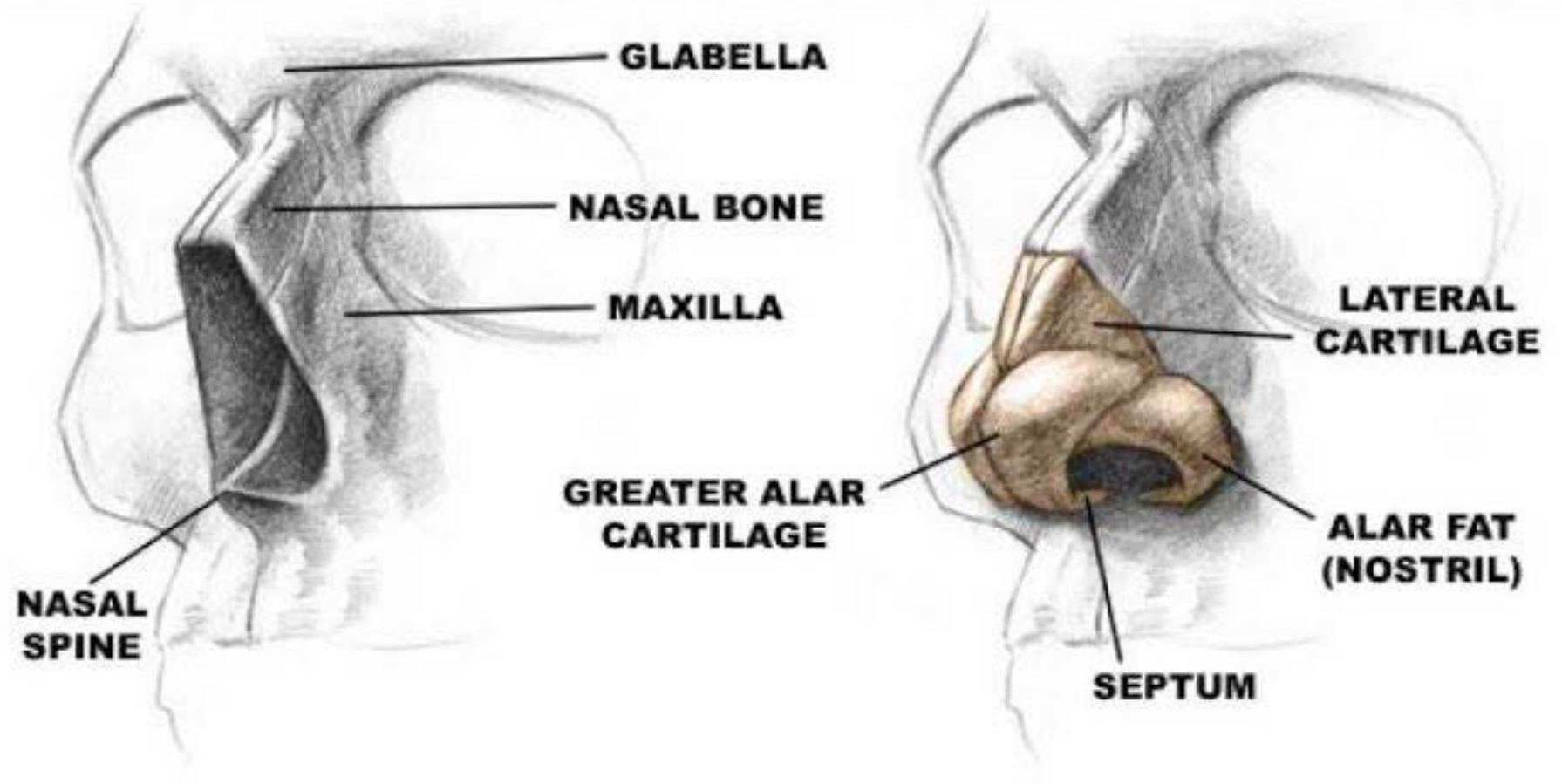


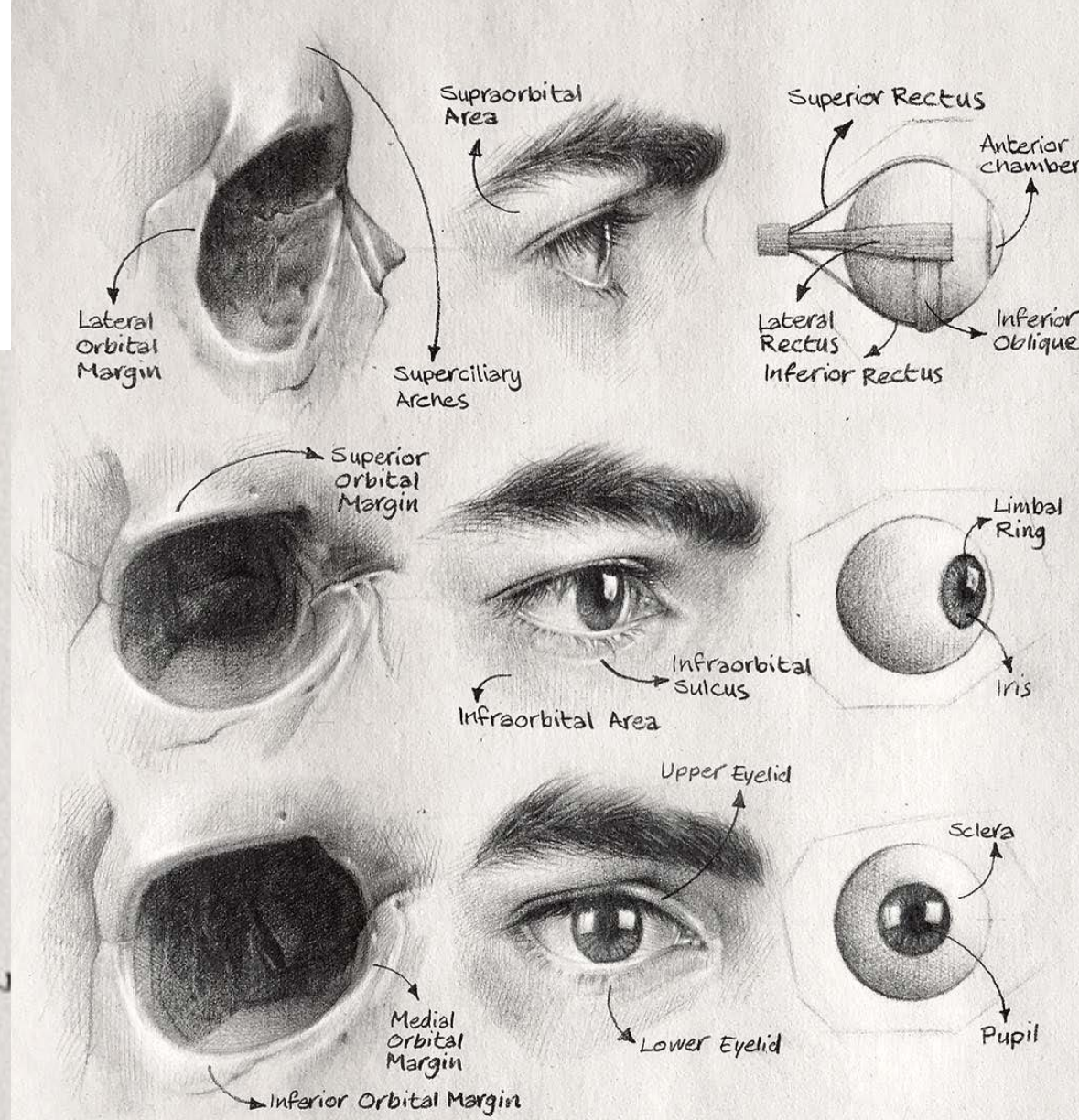
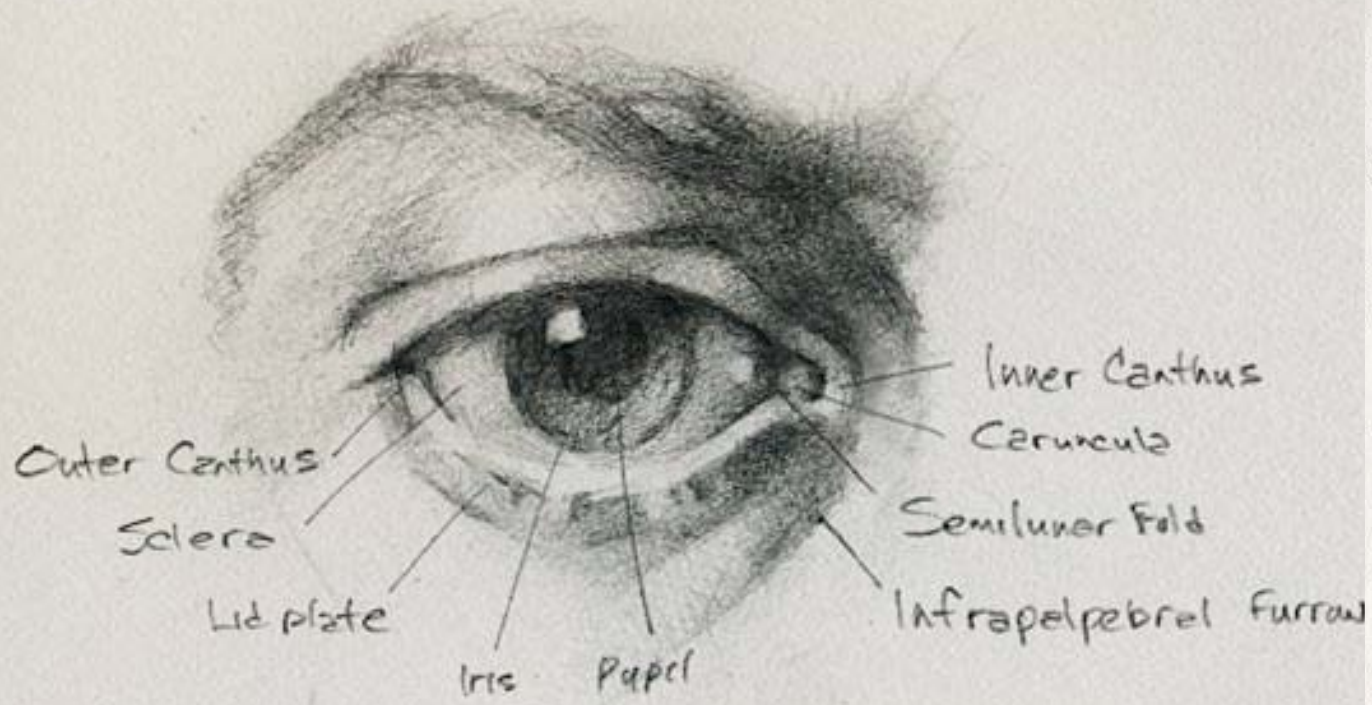
Week 4 discussion:  
Ear and Mouth! Fun fun funner!

Kevin Wueste  
Instructor

# Some Nose Anatomy for last week!



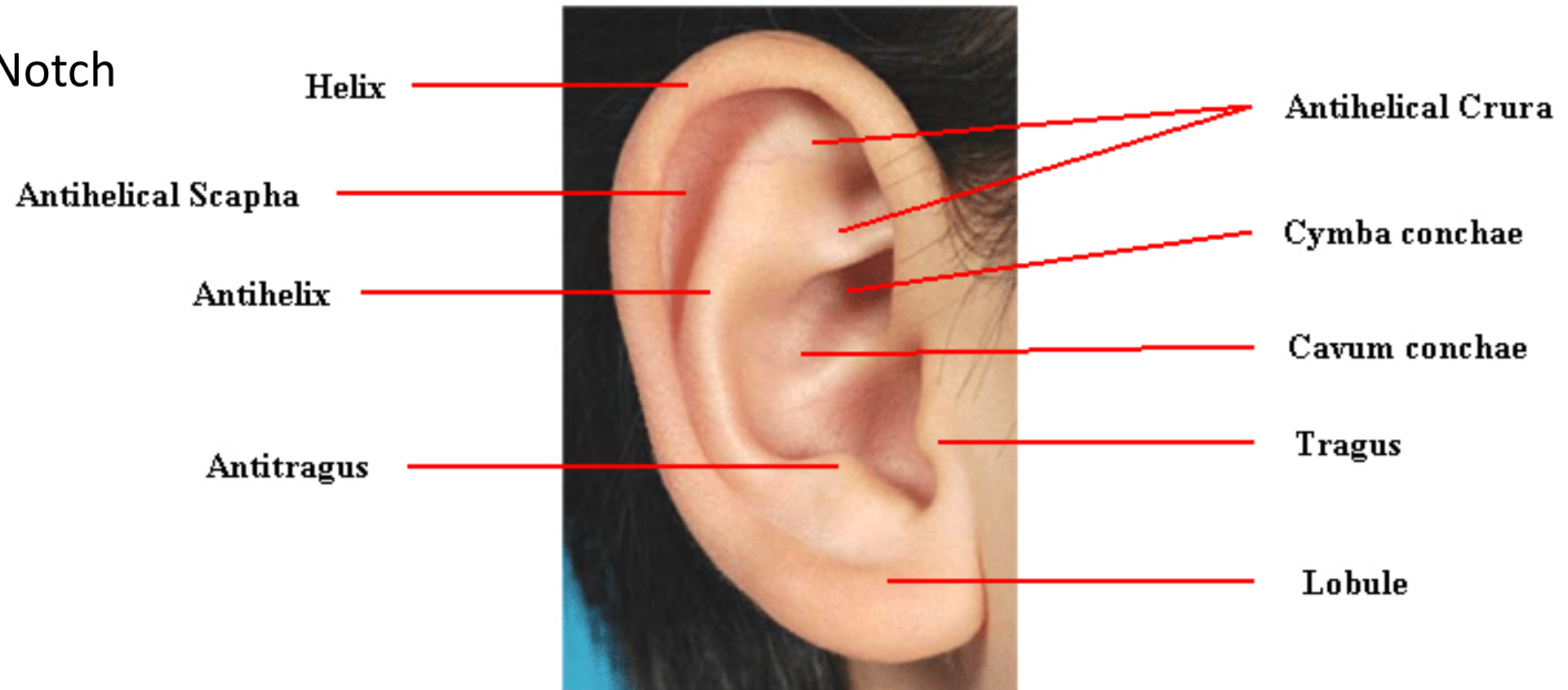
# Some artist's eye anatomy:



*Justin*  
2018

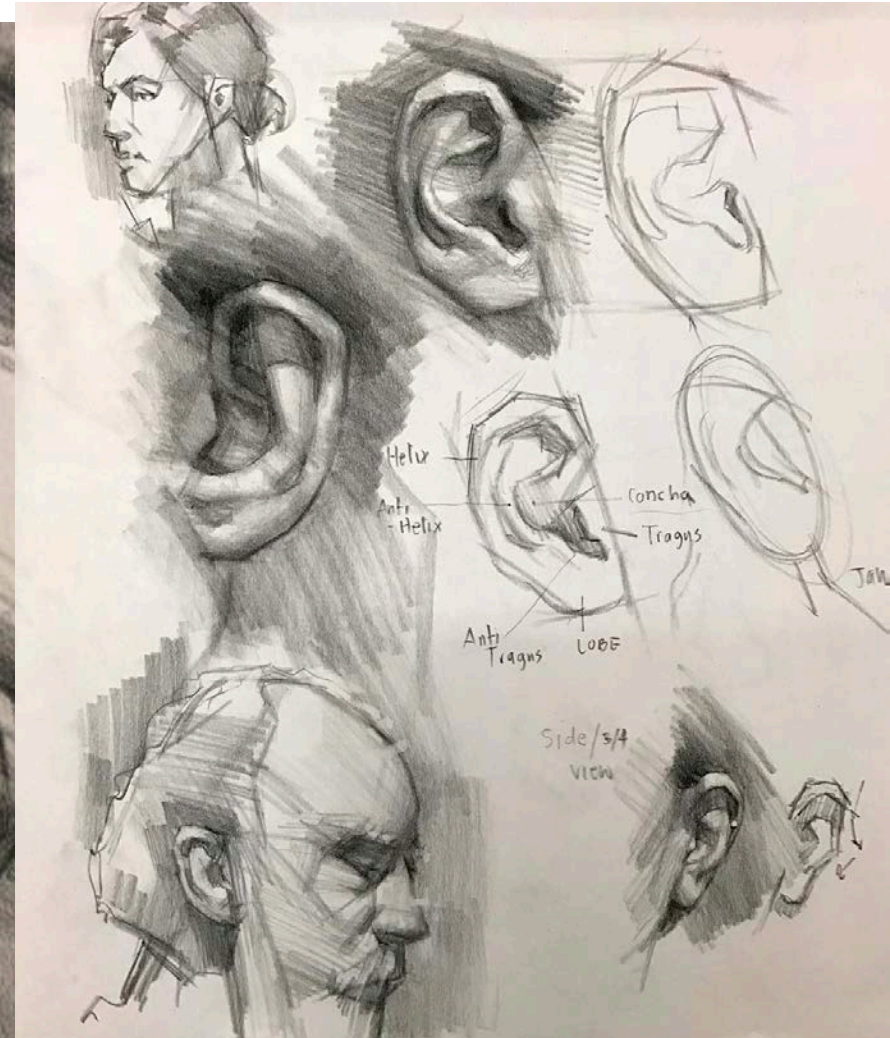
# Ear anatomy

- Helix
- Anti-Helix
- Tragus/Tragal Notch
- Anti-tragus
- Concha

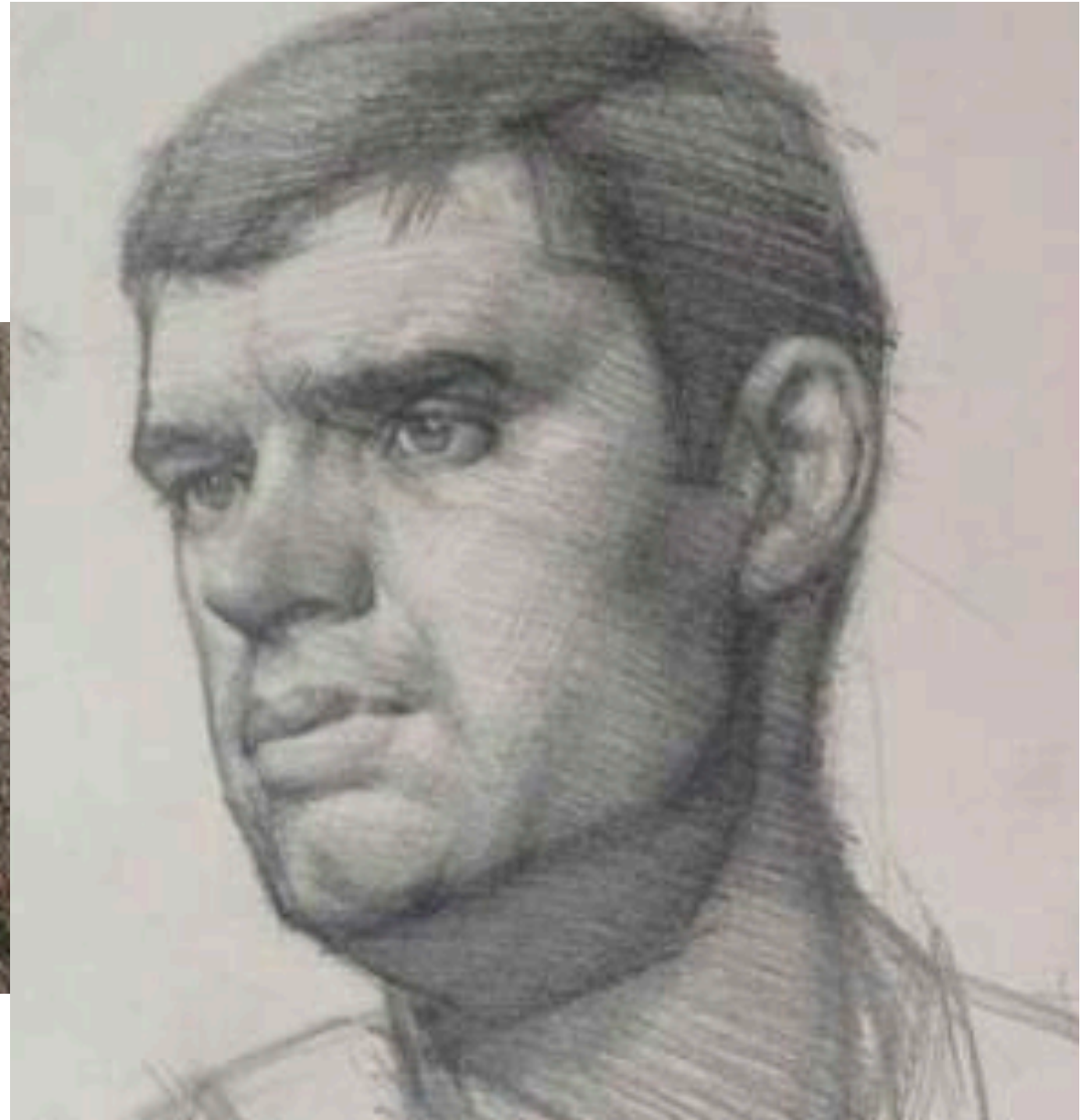
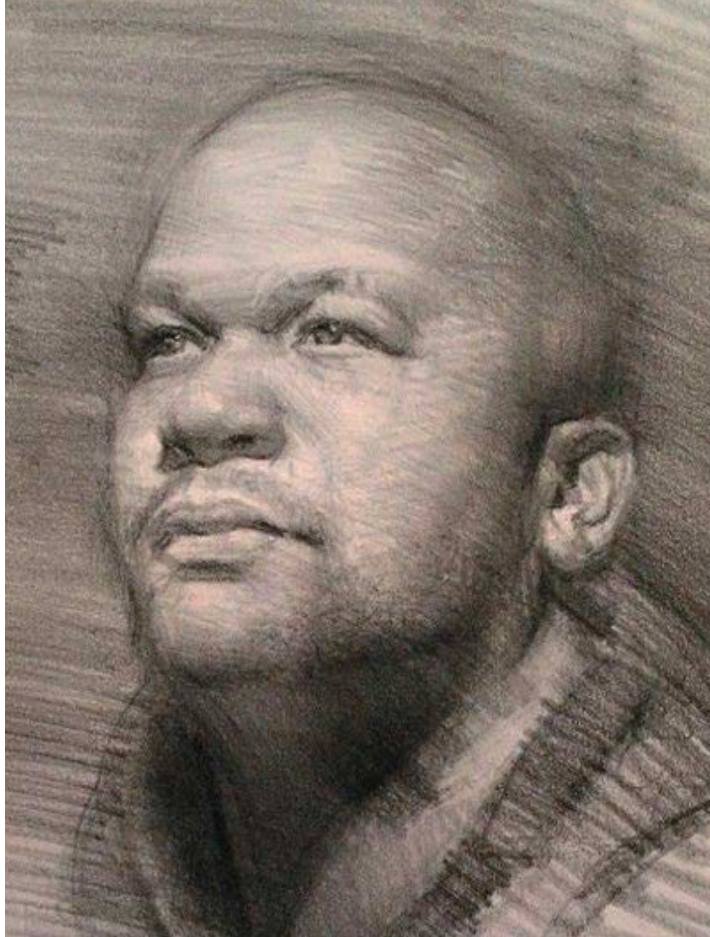


# The ear

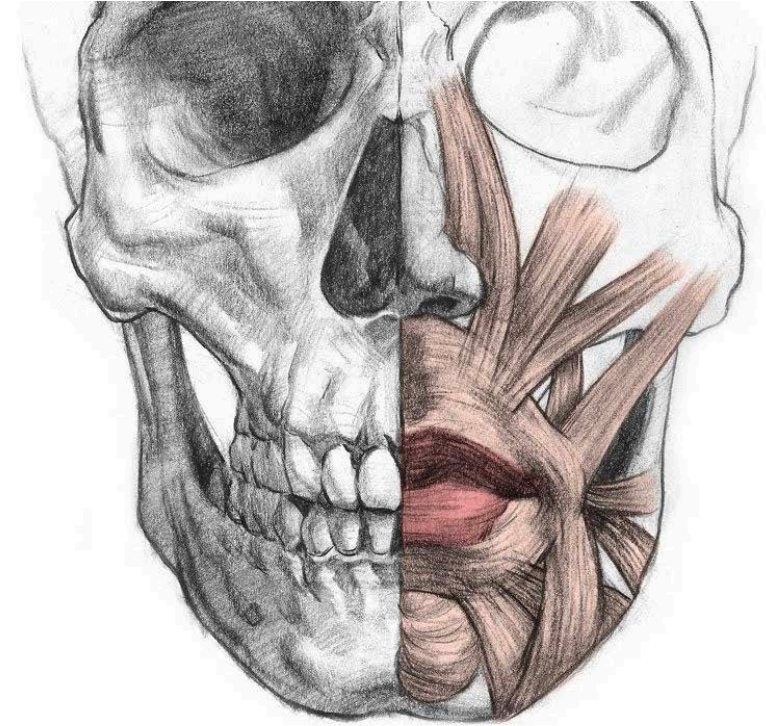
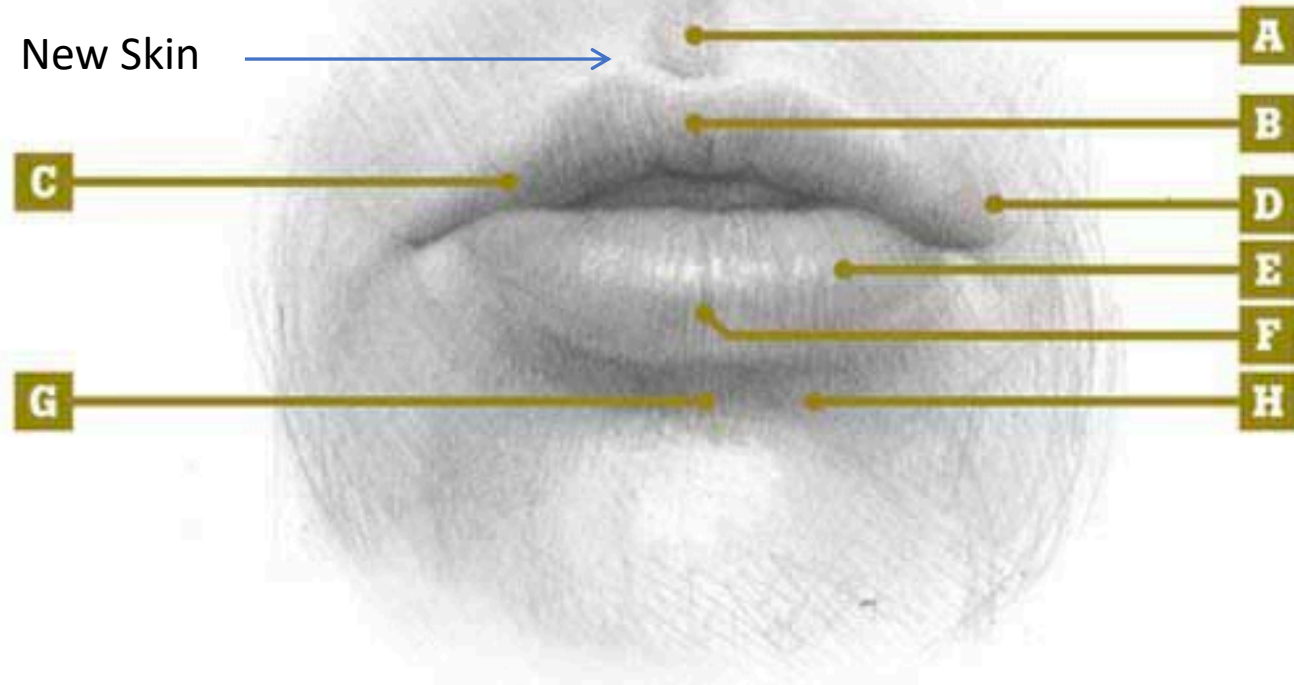
- The ear is an oval-esque shape
- Sits Back on the jaw line
- Softer edges mostly.. Lost and found are useful..
- Don't tell anyone but: no one except you and me will know if you did not get the ear "likeness" to be exact! ;-)
- Locate the ear by measuring /comparing eye widths.



Ears..



# Mouth anatomy..



- A. Philtrum
- B. Fubercle of the upper lip-beak
- C. Vermilion zone
- D. Node
- E. Lobe of the lower lip
- F. Groove of the lower lip
- G. Mentolabial furrow
- H. Pillar of the mouth

“Cupid’s bow” - Philtrum and Tubercle of upper lip.

# The mouth...

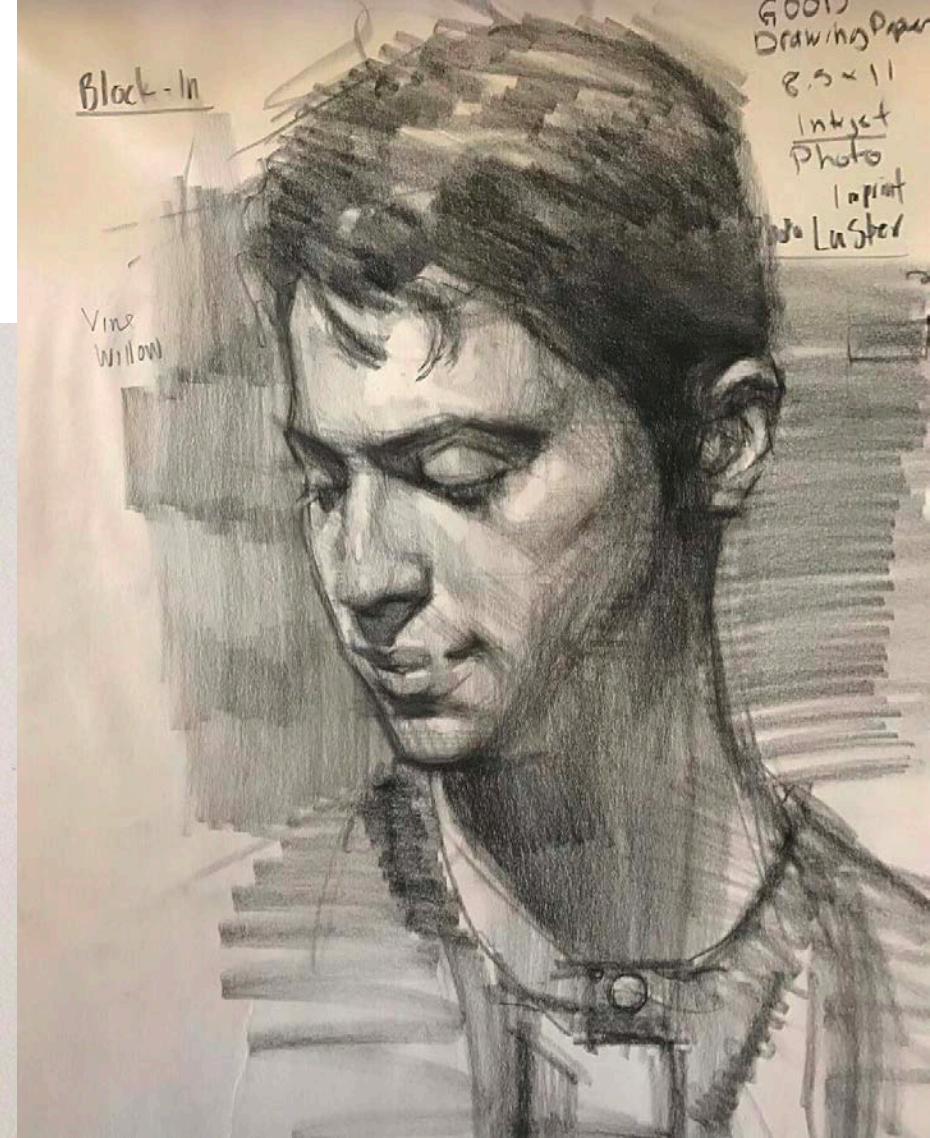
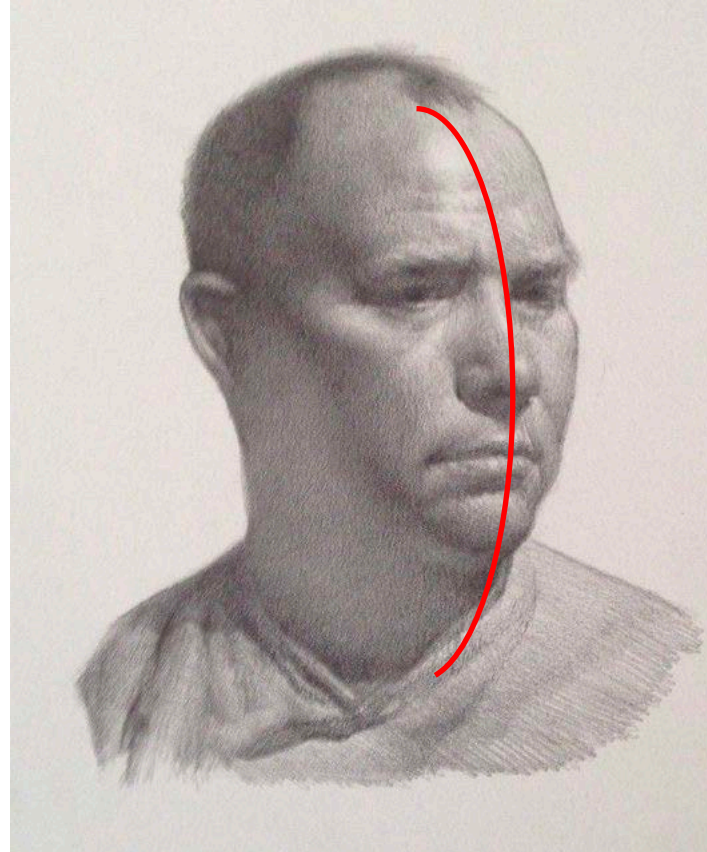
- Look for the line-up first! ( eyes, nose, mouth)
- New artists tend to elongate the philtrum – measure to verify
- Darker accents at the sides and middle
- The lips are tubular and roll with the light





# Mouth stuff continued

- Look for the wrap-arounds
  - Sad mouth when we look up ( or older person)
  - Happy mouth when we look down at them (or younger person –yes it's true!)
- Keep an eye out for the center line of the head!



Next week – a lovely portrait with focus on ear and mouth ( but all things should be developed as time allows.) On white paper !

- HB, B, 2B, 3b .. Kneaded eraser
  - If you can find the firmer “*al-dente*” “Design kneaded eraser – I like them better.
  - Peel off magic rub 1960 by Sanford ( discontinued).. All the new ones are about 1/5<sup>th</sup> as good.. So if you research – that is the one I like the most.
- Reminder our final assignment will be on toned paper and I will demo that next week. Strathmore “artagain” middle value paper ( gray tone) is my suggested paper.
  - Generals white charcoal (white chalk) pencils
  - A long fibered filbert hog bristle brush can be useful..

