

SUPER Neighborhood RESOURCE ASSESSMENT



	Super Neighborhood		Houston	
	2000	2017	2000	2017
Pop. characteristics				
Total population	40,209	52,509	1,953,631	2,267,336
Persons per sq. mile	7,446	9,721	3,166	3,394
Age of Population				
Under 5 years	6%	10%	8%	8%
5- 17 years	9%	13%	19%	17%
18- 64 years	78%	69%	64%	65%
65 and over	7%	8%	9%	10%
Ethnicity				
Non Hispanic Whites	49%	31%	31%	25%
Non Hispanic Blacks	11%	14%	25%	22%
Hispanics	30%	43%	37%	44%
Non Hispanic Asians	7%	9%	6%	7%
Non Hispanic Others	3%	3%	1%	2%
Income				
Under \$25,000	30%	30%	33%	26%
\$25,000 to \$49,999	34%	28%	31%	25%
\$50,000 to \$99,999	26%	25%	24%	26%
Over \$100,000	11%	17%	12%	23%
Median Household Income	\$41,172	\$47,138	\$36,616	\$49,399
Educational Status				
No Diploma	16%	18%	30%	22%
High School Diploma	13%	17%	20%	23%
Some College	26%	23%	23%	23%
Bachelor's or Higher	45%	42%	27%	32%
Housing and Households				
Total housing units	23,650	26,730	782,378	943,183
Occupied	90%	89%	92%	89%
Vacant	10%	11%	8%	11%
Total households	21,308	23,816	717,945	838,950
Family households	7,903	11,443	457,549	491,778
Median Housing Value	\$142,403	\$248,225	\$79,300	\$149,000

Description

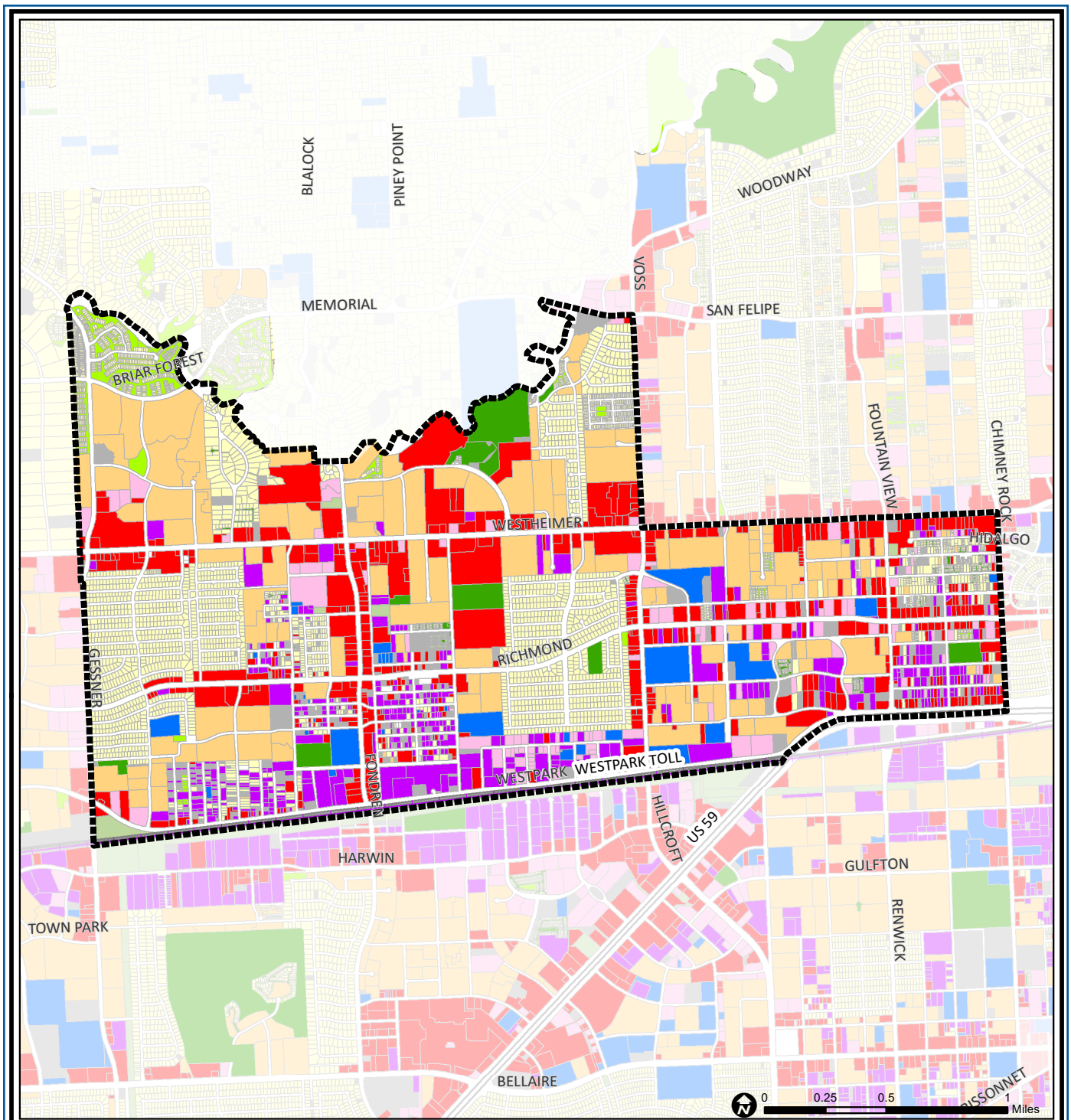
The Mid West super neighborhood is located directly south of Piney Point Village, and is bordered on the south by the Southern Pacific Railroad track. The area contains a mix of single-family, condominiums, apartments, and office/commercial uses. Major commercial activity occurs along Westheimer, Richmond, and Fondren roads. The northwest corner of this neighborhood, known as Woodlake, consists of mixed commercial and high density residential uses. Tanglewilde and Briar Meadow (on both sides of Richmond Avenue) are the largest single-family subdivisions in the area.

Highlights

- ✓ Houston City Council Districts F, J & G
- ✓ Alief Independent School District
- ✓ Houston Independent School District
- ✓ Spring Branch Independent School District
- ✓ 8 Police beats (includes bordering beats)
- ✓ 3,457 acres (5.40 sq. miles)



PLANNING & DEVELOPMENT DEPARTMENT



Mid-West: Land Use

- | | | |
|-----------------------------|------------------------------|-------------------------|
| Freeway | Commercial | Parks and Open Space |
| Rail Road | Office | Undeveloped |
| Super Neighborhood Boundary | Industrial | Agricultural Production |
| Single-family Residential | Public and Institutional | Open Water |
| Multi-family Residential | Transportation and Utilities | Unknown |

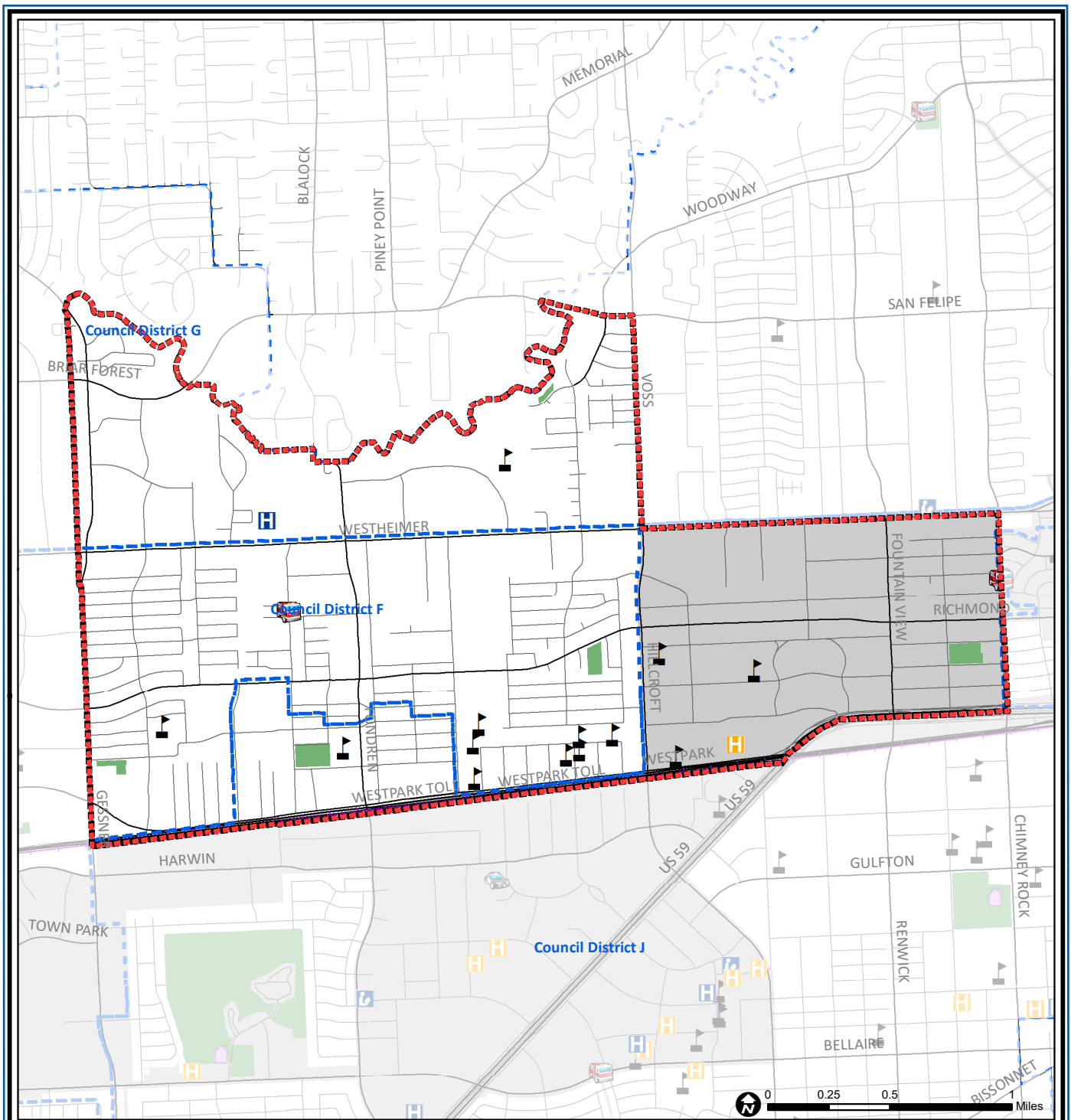
Source: City of Houston GIS Database,
Harris County Appraisal District

Date: May 24, 2019

This map is made available for reference purposes only and should not be substituted for a survey product. The City of Houston will not accept liability of any kind in conjunction with its use.



**PLANNING &
DEVELOPMENT
DEPARTMENT**



Mid-West: Public Facilities

- | | | |
|-----------------------------|-------------------------|---------------------|
| Super Neighborhood Boundary | Airports | Rail Road |
| Community Centers | Harris County Hospitals | Metro Rail Stations |
| Fire Station | Private Hospitals | Metro Rail Line |
| Police Station | Other Health Facilities | Parks |
| School | Library | TIRZ |

Source: City of Houston GIS Database

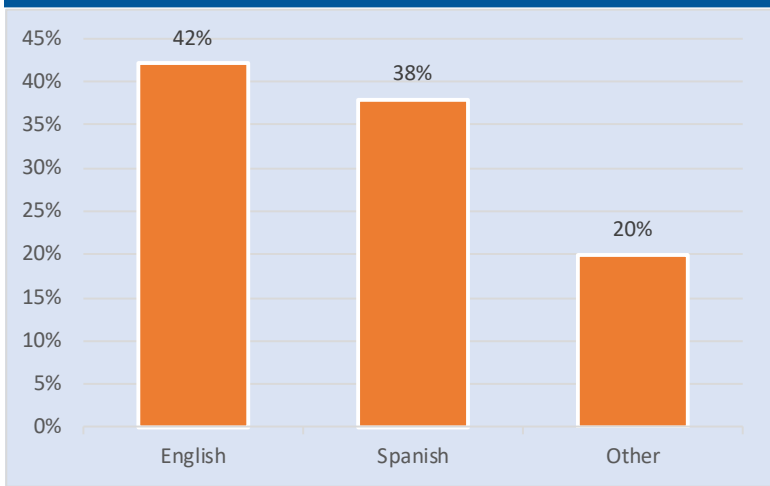
Date: June 2019

This map is made available for reference purposes only and should not be substituted for a survey product. The City of Houston will not accept liability of any kind in conjunction with its use.

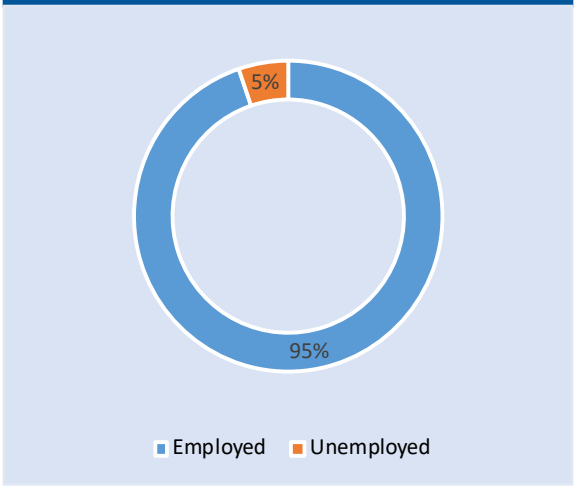


PLANNING & DEVELOPMENT DEPARTMENT

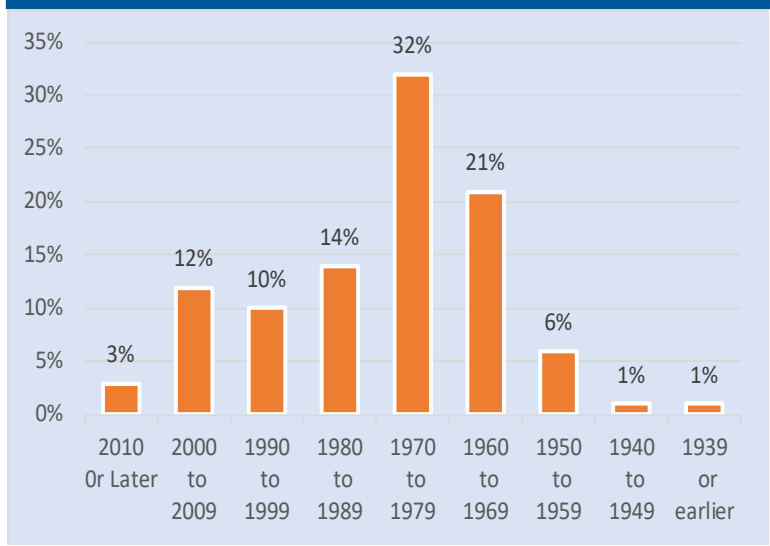
Language Spoken at Home



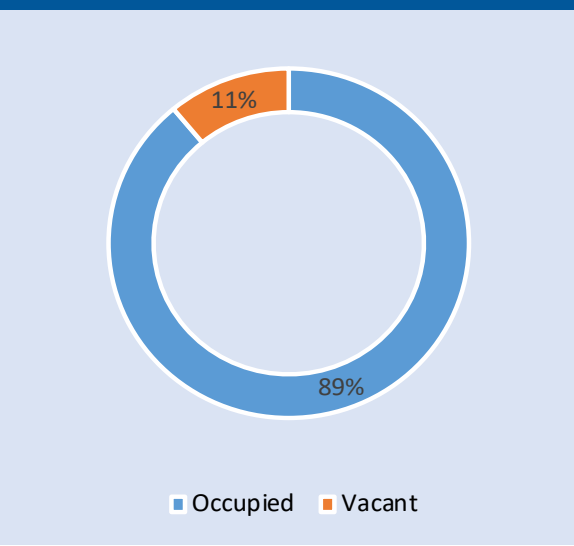
Employment Status



Housing Units by Year Built



Housing Occupancy



Source: U.S. Census Bureau, 2000 American Community Survey, 2013-2017 Estimates

