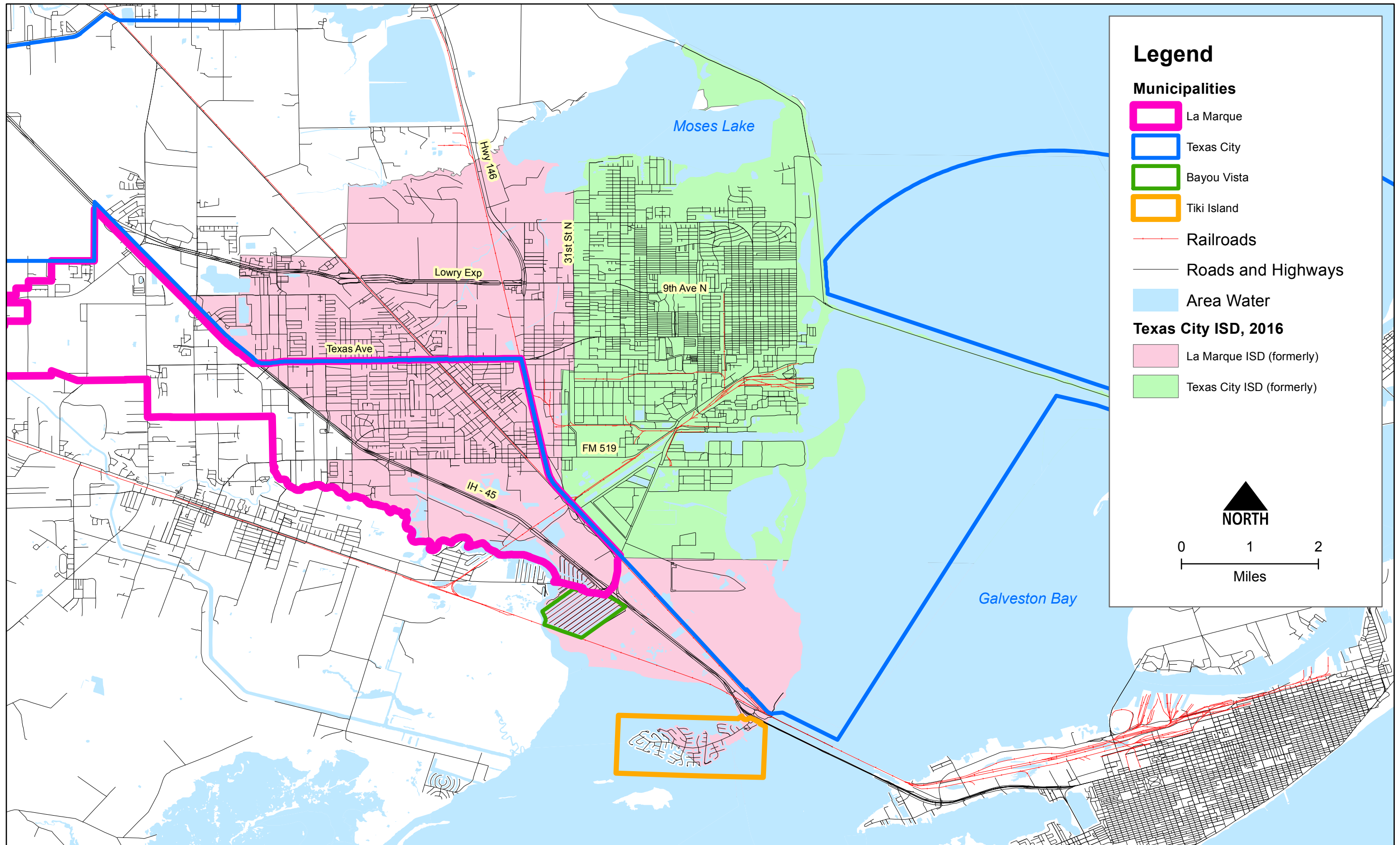
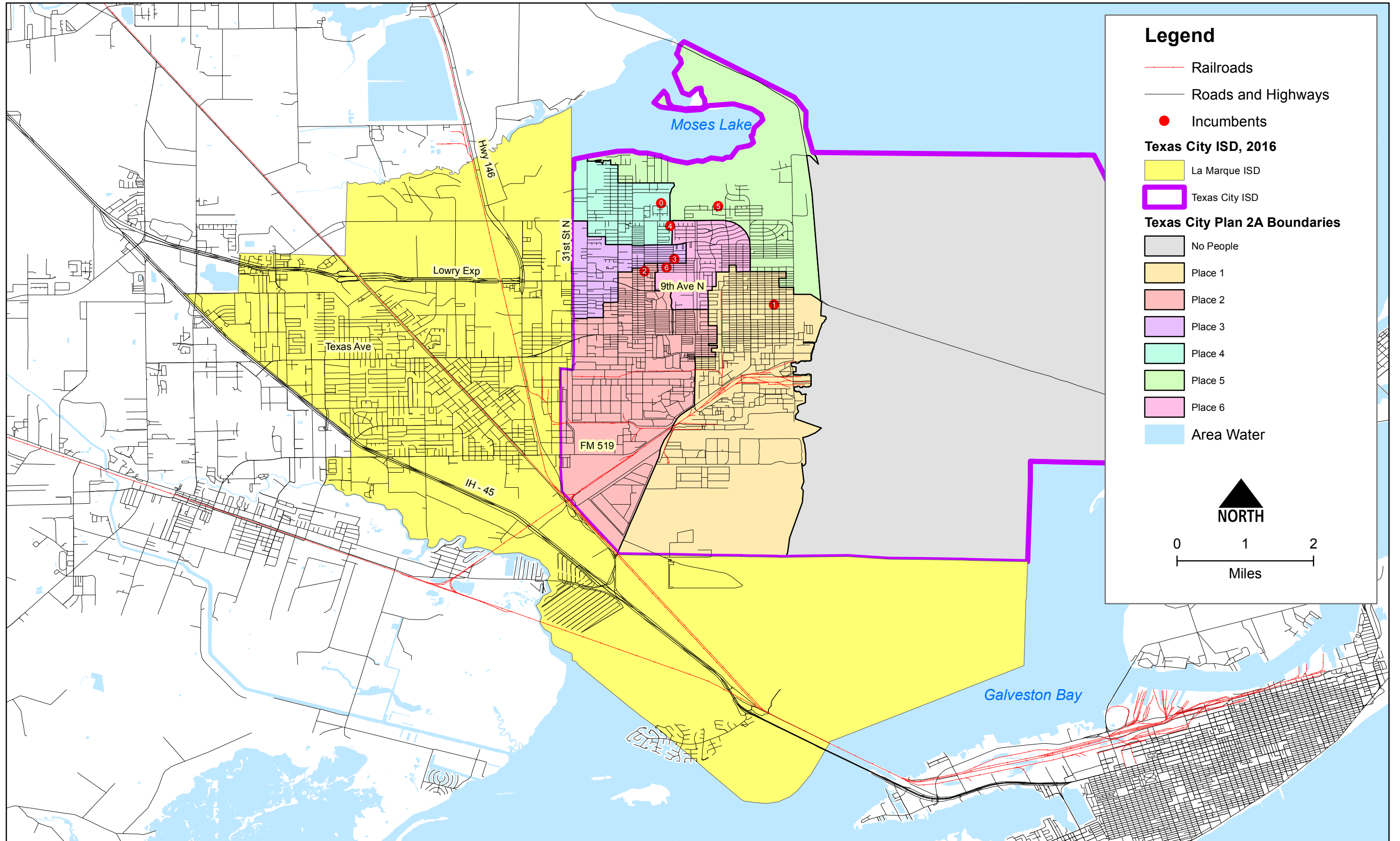


Map 1. Texas City ISD, 2016

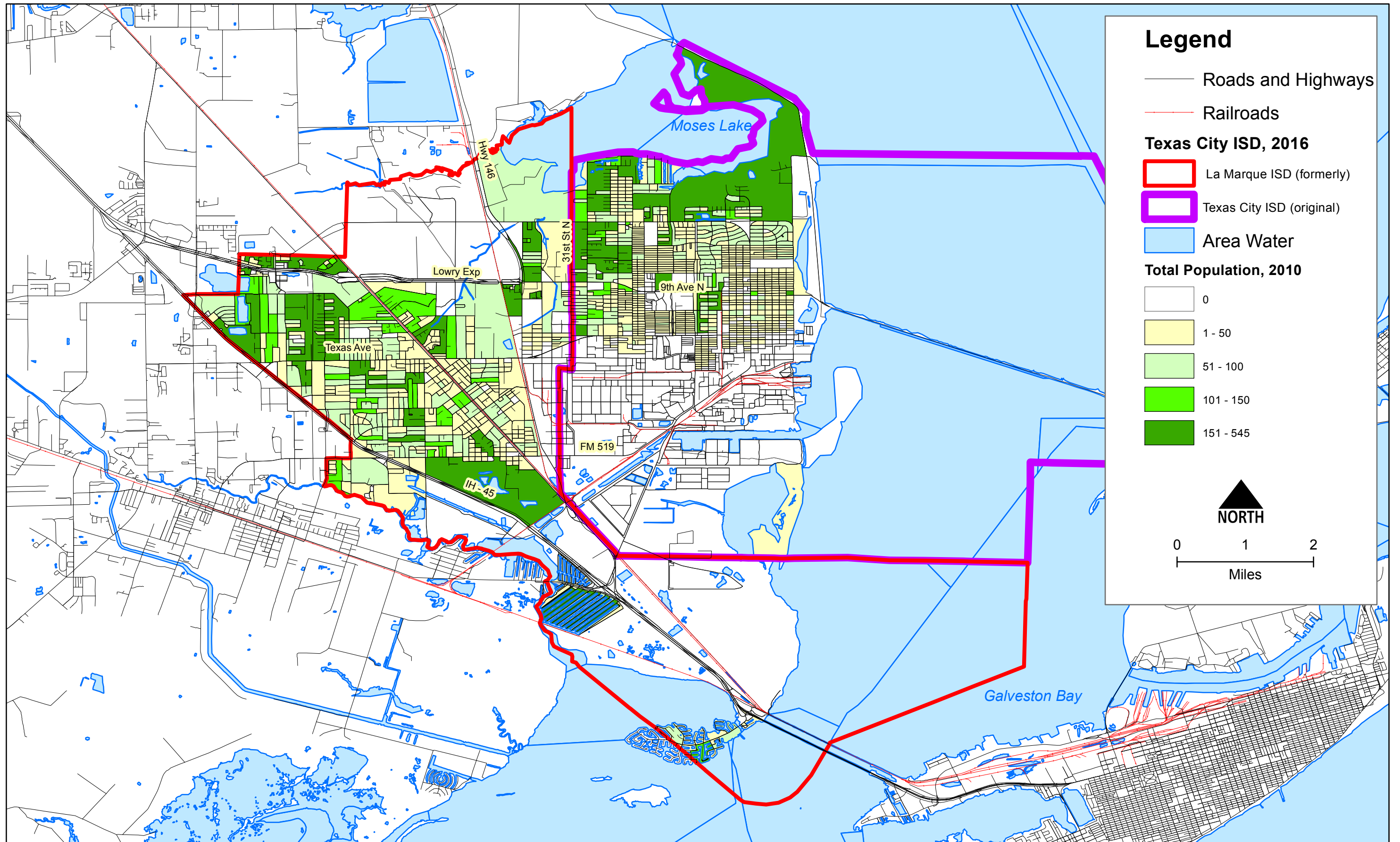


# Map 2. 2015 Boundaries

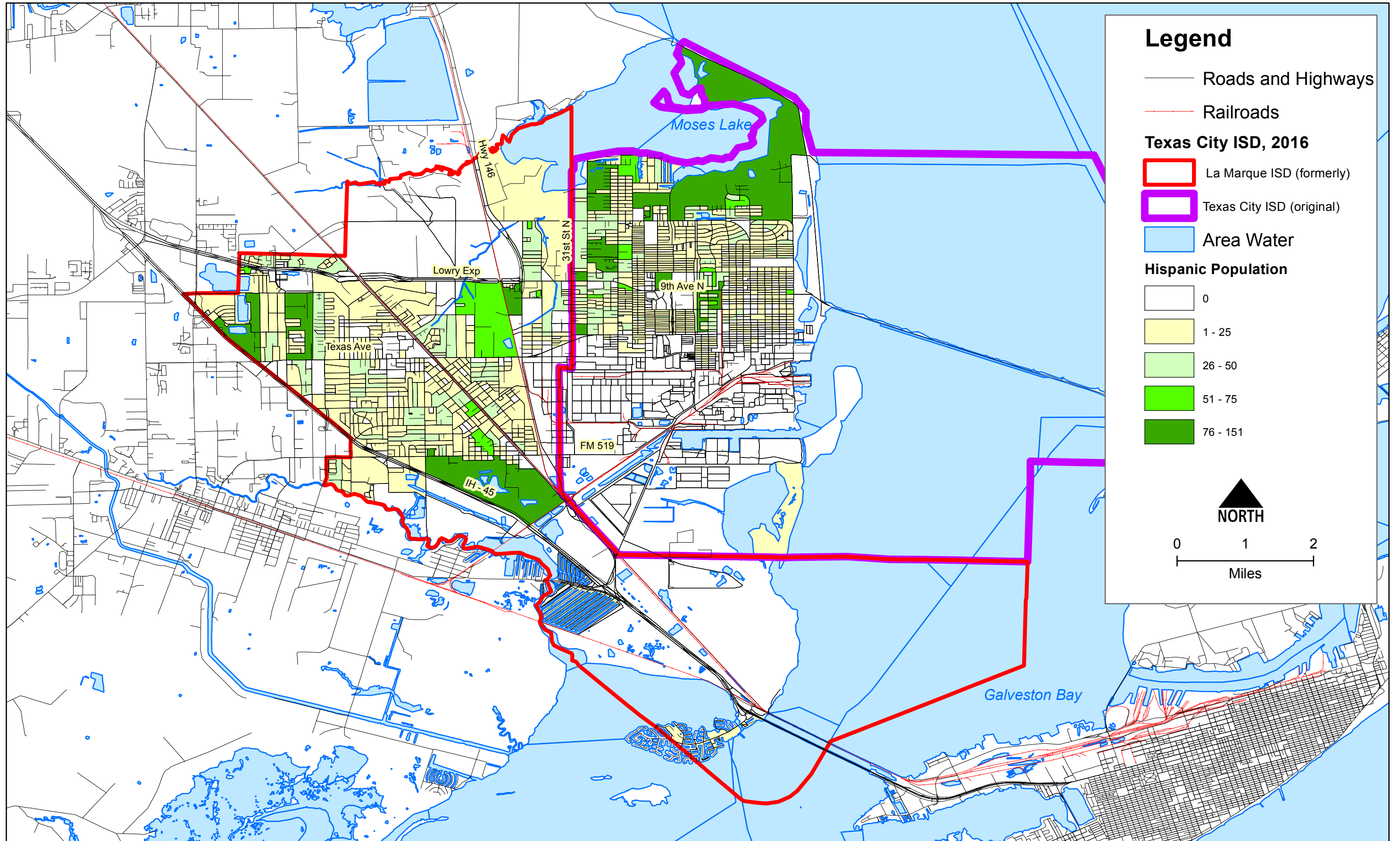




Map 3. All Persons by Census Block, 2010

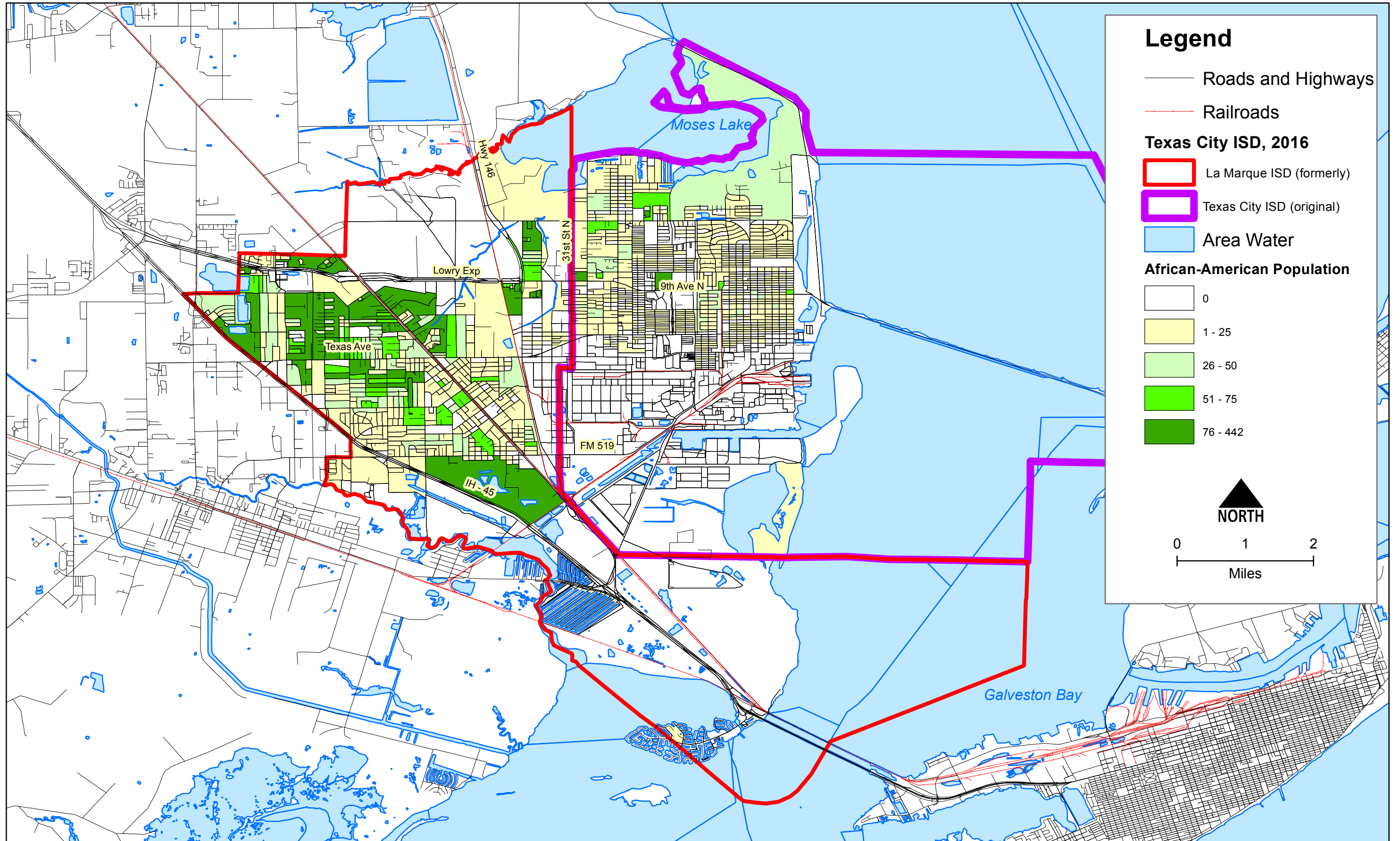


Map 4. Hispanic Population by Census Block, 2010

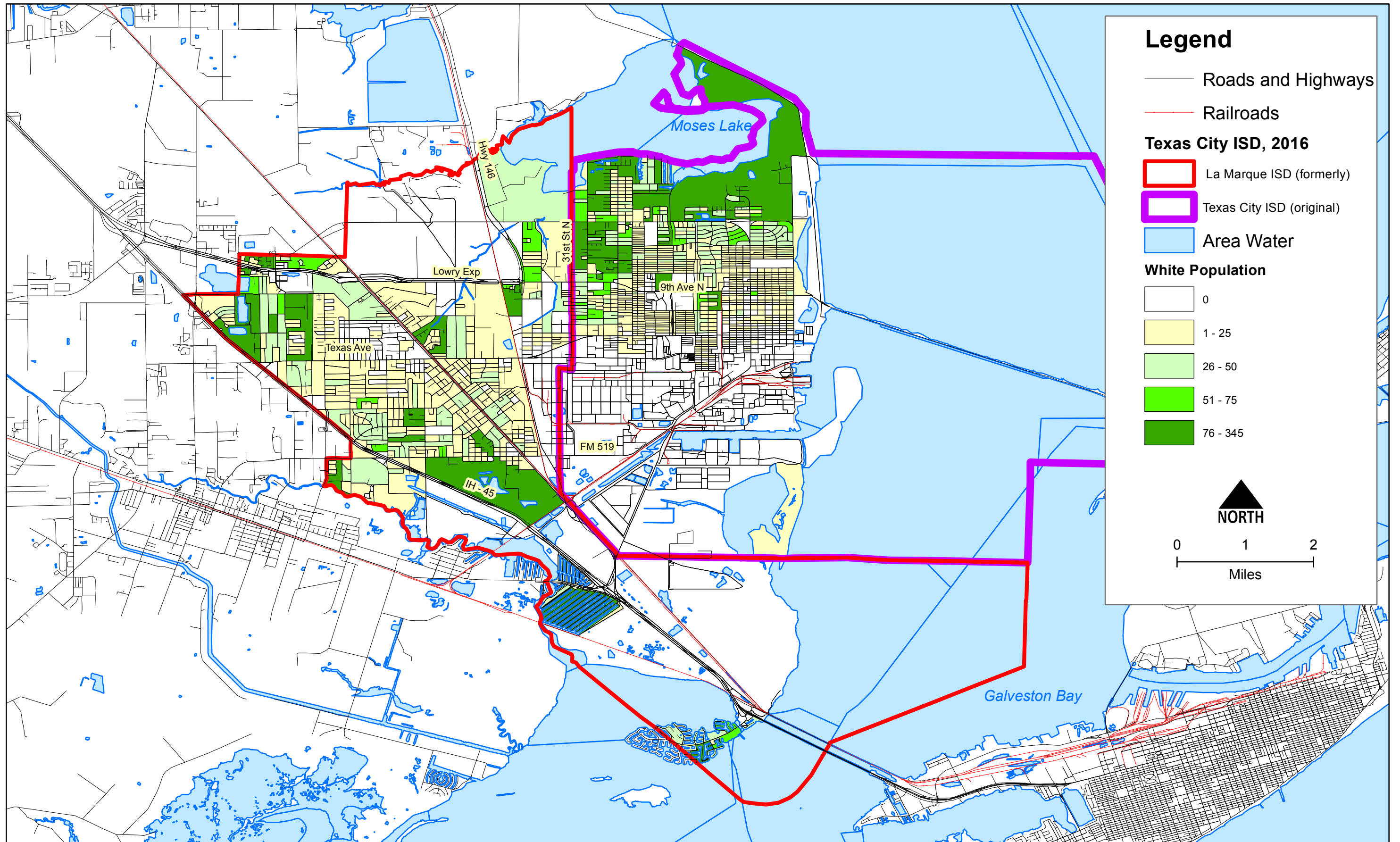




Map 5. African-American Population by Census Block, 2010

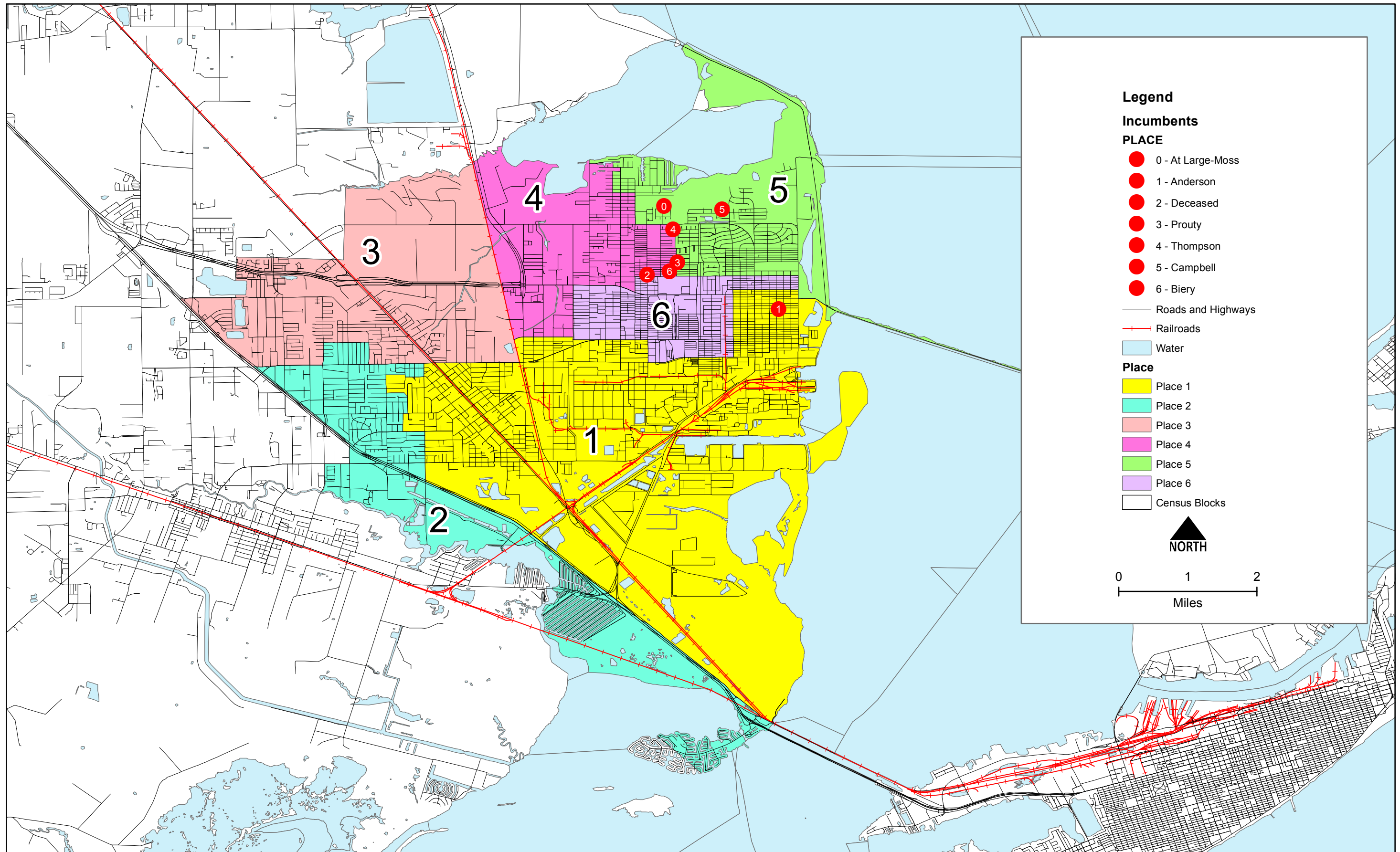


Map 6. White Population by Census Block, 2010





# Plan 6 - 1 (C)--October 7, 2016



Place 1	9148	2532	2770	3624
Place 2	9070	1370	4472	3028
Place 3	9305	1284	2316	5470
Place 4	9484	2625	4476	2074
Place 5	9167	2511	5424	997
Place 6	8849	3749	3323	1600



## 6-1 Plan "C" October 7, 2016

District	Total	Hispanic	Non-Hispanic		
			White	Af. Amer.	"Other"
1	9148	2532	2770	3624	222
2	9070	1370	4472	3028	200
3	9305	1284	2316	5470	235
4	9484	2625	4476	2074	309
5	9167	2511	5424	997	235
6	8849	3749	3323	1600	177
All	55,023	14,071	22,781	16,793	1378

Optimum: 9171

District	Deviation	Hispanic	Non-Hispanic		
			White	Af. Amer.	"Other"
1	-0.25%	27.7%	30.3%	39.6%	2.4%
2	-1.10%	15.1%	49.3%	33.4%	2.2%
3	1.46%	13.8%	24.9%	58.8%	2.5%
4	3.41%	27.7%	47.2%	21.9%	3.3%
5	-0.04%	27.4%	59.2%	10.9%	2.6%
6	-3.51%	42.4%	37.6%	18.1%	2.0%
All		25.6%	41.4%	30.5%	2.5%

Deviation: 6.92%

## 2010 Population for Texas City and La Marque ISDs

	<b>Texas City ISD</b>	<b>La Marque ISD</b>	<b>Total</b>
All	27,405	27,618	55,023
Hispanic	6,752	7,319	14,071
Non-Hispanic White	15,859	6,922	22,781
Non-Hispanic African American	4,307	12,486	16,793
Non-Hispanic Other	487	891	1,378
% Hispanic	24.6%	26.5%	25.6%
% Non-Hispanic White	57.9%	25.1%	41.4%
% Non-Hispanic African American	15.7%	45.2%	30.5%
% Non-Hispanic Other	1.8%	3.2%	2.5%

Source: PL 94-171, 2010