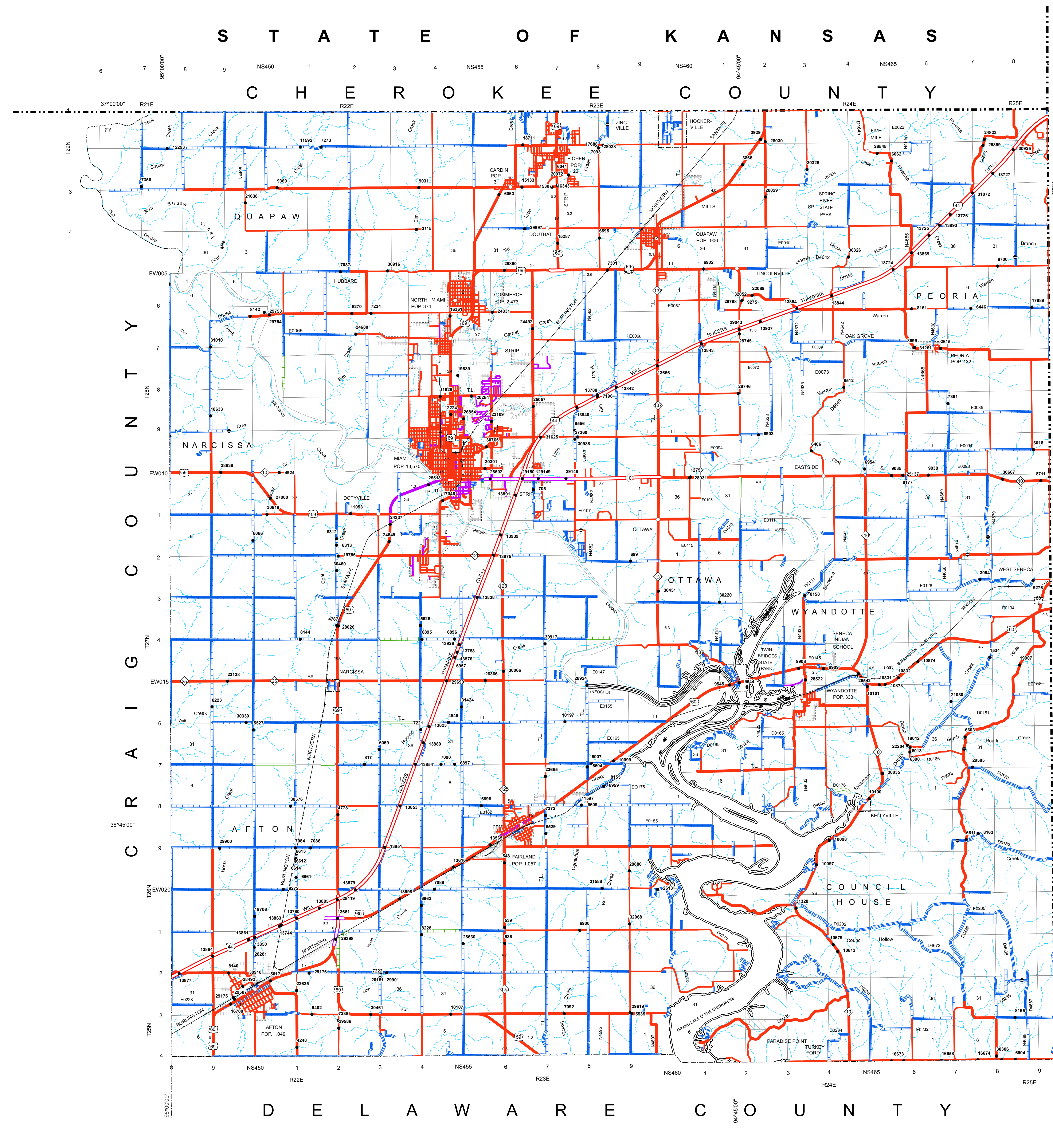
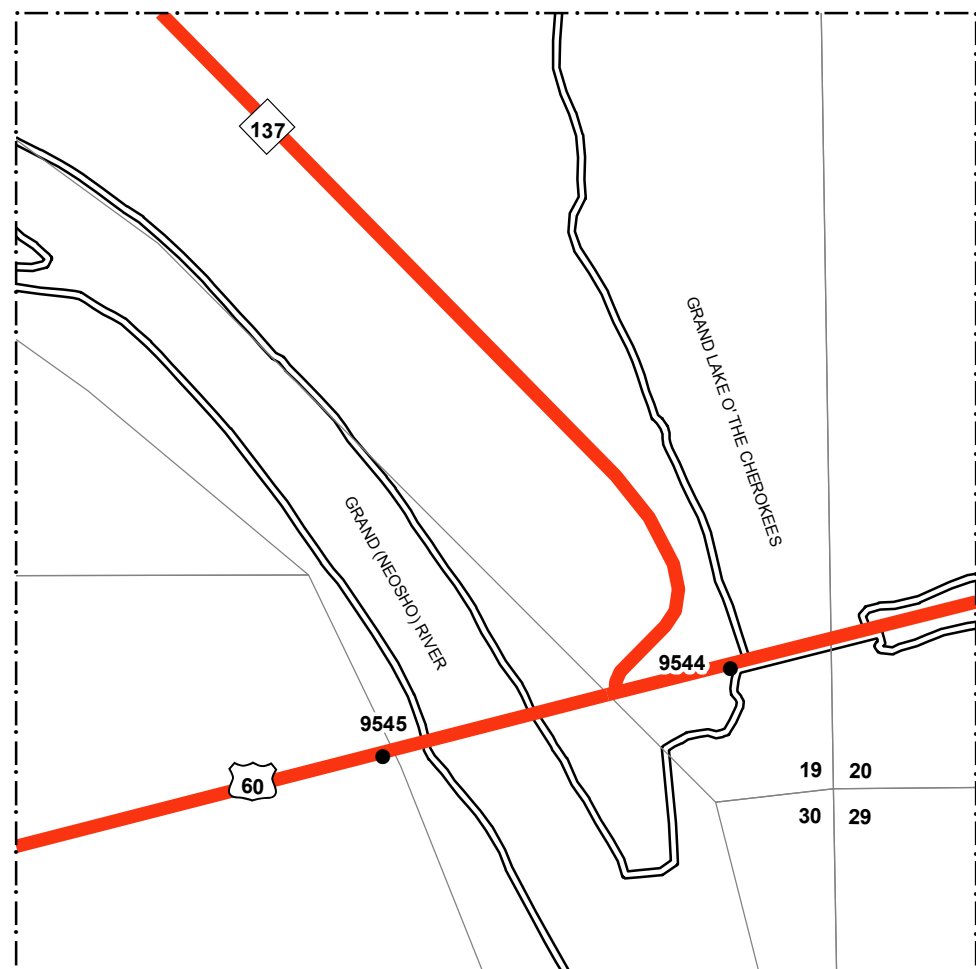


S T A T E O F K A N S A S

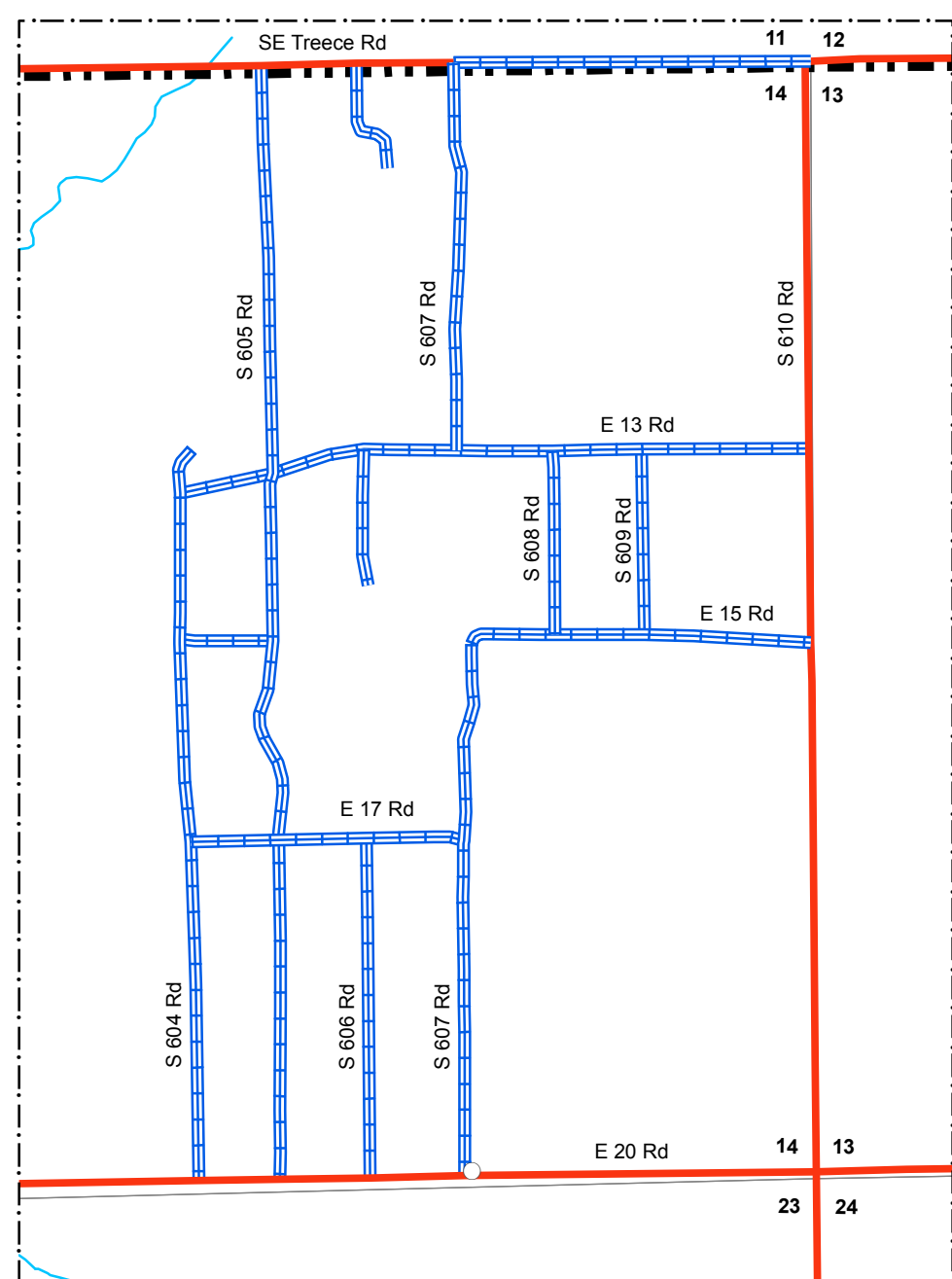
C H E R O K E E C O U N T Y



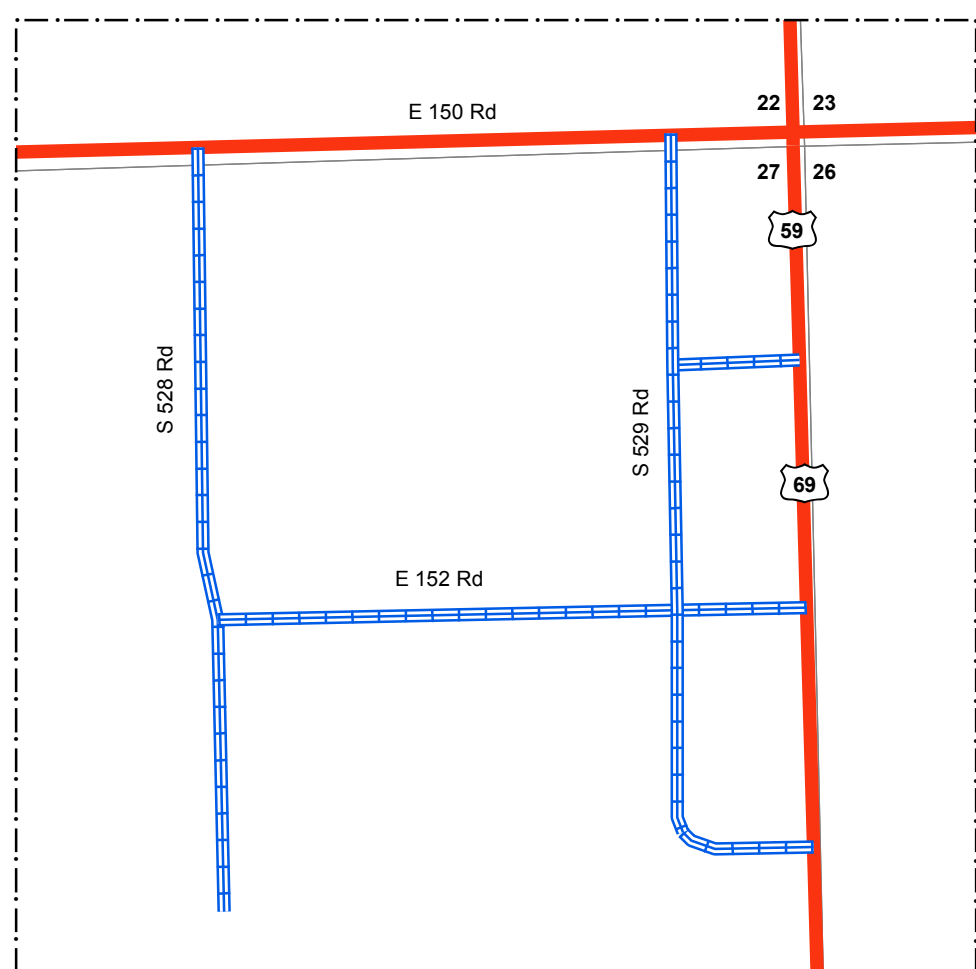
D E L A W A R E C O U N T Y



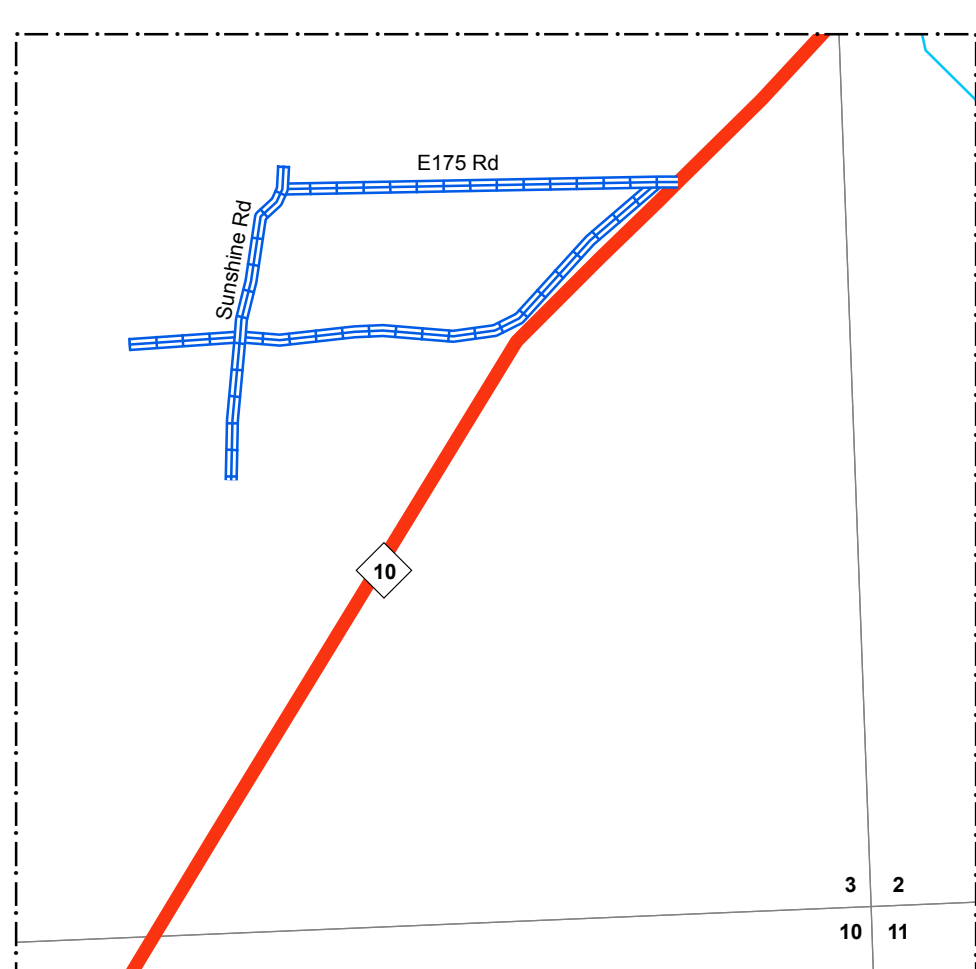
TWIN BRIDGES STATE PARK
SEC. 19, T 29 N, R 24 E



HOCKERVILLE
SEC. 14, T 29 N, R 23 E

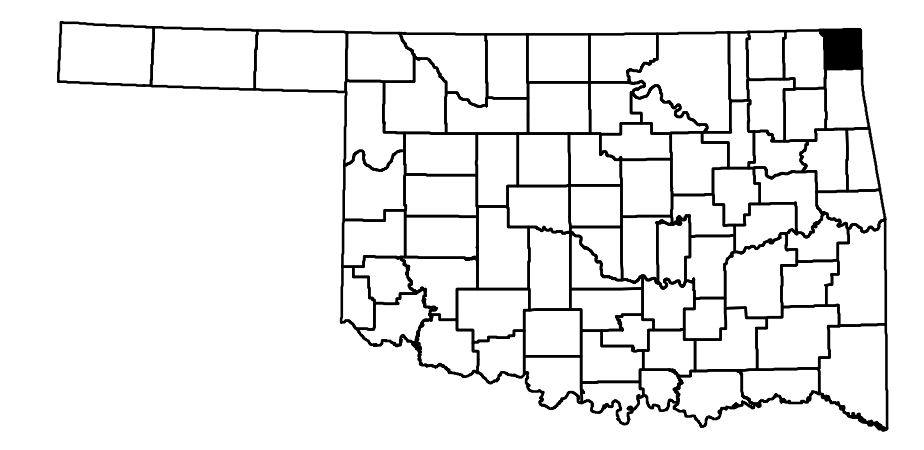


NARCISSA
SEC. 27, T 27 N, R 22 E



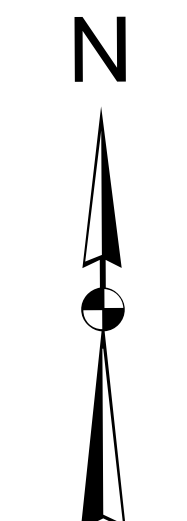
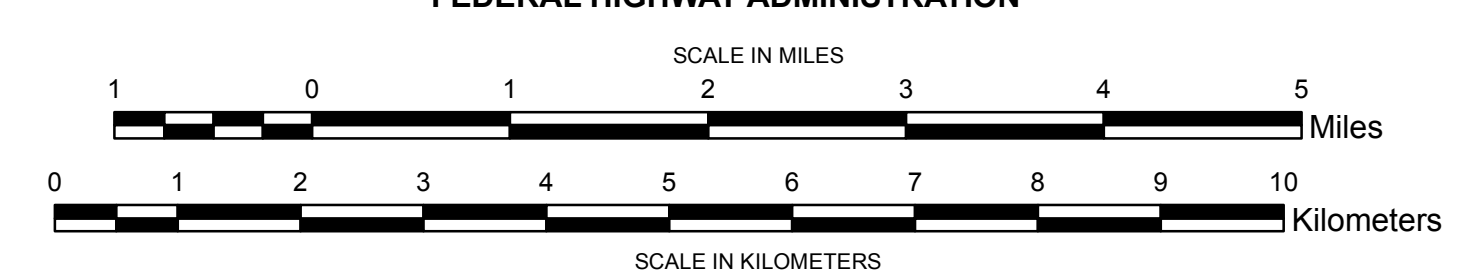
KELLYVILLE
SEC. 3, T 26 N, R 24 E

- Legend**
- Interstate Highway
 - US Highway
 - State Highway
 - Divided Highway - Asphalt
 - Divided Highway - Concrete
 - Asphalt
 - Concrete
 - Gravel
 - Grade & Drain
 - Unimproved
 - Railroad
 - State Line
 - County Line
 - Section Line
 - Corporate Limit
 - Wildlife Management Area
 - Wildlife Refuge
 - River or Stream
 - Lake or Reservoir
 - Bridges
 - Low Water Crossing
 - Natural Elevation Point



GENERAL HIGHWAY MAP OTTAWA COUNTY OKLAHOMA

PREPARED BY THE
OKLAHOMA DEPARTMENT OF TRANSPORTATION
STRATEGIC ASSET AND PERFORMANCE
MANAGEMENT DIVISION
IN COOPERATION WITH THE
U.S. DEPARTMENT OF TRANSPORTATION
FEDERAL HIGHWAY ADMINISTRATION



Copies of this map are available for public use at nominal cost.
Address:
OKLAHOMA DEPARTMENT OF TRANSPORTATION
PRINTING SERVICES Phone (405) 521-2586
200 N.E. 21st STREET
OKLAHOMA CITY, OKLAHOMA 73105-3204

This map indicates those roads known to the Department to be open to public travel. Placement of a road on the map has no relationship to maintenance responsibility by any level of government.

ALL DATA CURRENT AS OF DATE LISTED BELOW
October 2, 2018

ALL RIGHTS RESERVED

COMPUTER GENERATED