

2018

# A3 Sportback e-tron<sup>®</sup>

Quick Questions & Answers



**Introduction to your A3 e-tron<sup>®</sup>**

**MMI<sup>®</sup> Controls**

**Navigation**

**Climate Control & Cruise Control**

**Audi smartphone interface**

**Bluetooth<sup>®</sup> & Voice Recognition**

**e-tron<sup>®</sup> Charging & Driving Modes**



- 1. Start Engine Stop (with Convenience Key)**  
With the key fob in the vehicle, pressing this button starts the engine and shuts the engine off when the vehicle is in Park.
- 2. MMI® Controls**  
MMI controls consist of a control knob with joystick, control buttons and function buttons. Turn the control knob to the left or right and press it to make a selection in the MMI.
- 3. Navigation**  
Get started with setting destinations and discover more as you become familiar with the interface.
- 4. Electromechanical Parking Brake**  
Pull the switch up to engage the parking brake. To disengage, place your foot on the brake and push down on the switch.
- 5. Climate Control**  
Set preferences for temperature, airflow distribution and recirculation. Use in AUTO or Manual mode.
- 6. Voice Recognition**  
Press the TALK button on the steering wheel to activate Voice Recognition in the MMI.
- 7. USB Ports**  
Two USB Ports - one located underneath center armrest and another in center console, allow for connections to the MMI, Audi smartphone interface and allows for device charging.
- 8. Media**  
Select the MEDIA function to access available media from connected sources (e.g., Bluetooth audio, USB, and more).
- 9. Steering Wheel Controls**  
Assist with navigating through a variety of vehicle functions. To select a menu item, press the thumbwheel.
- 10. Instrument Cluster/Audi Virtual Cockpit**  
Displays vehicle system and function information. Menu selections can be accessed using either the MMI control knob or the multifunction steering wheel controls.
- 11. Cruise Control**  
The stalk allows you to set a preferred speed to be maintained above 15 mph. (Optional Adaptive Cruise Control allows a speed to be set and maintained between 20 - 95 mph.)

## Introduction to your A3 e-tron®

### MMI® Controls

### Navigation

### Climate Control & Cruise Control

### Audi smartphone interface

### Bluetooth® & Voice Recognition

### e-tron® Charging & Driving Modes

# MMI® Controls

## Center Console

The Audi Multi Media Interface (MMI) can be controlled from the center console as well as the steering wheel controls. There are input redundancies to allow you to access MMI functions in the way that best suits you.

### 1. MMI Control Knob/Touchpad

The rotary pushbutton/touchpad allows you to browse menus and zoom in and out of map views by rotating the knob, and select items by pressing the knob. Enter alphanumeric information by writing with your finger on the touchpad. The MMI will display your entry.

- ▶ To enter a space, swipe left-to-right. To delete a character, swipe right-to-left.

The knob can also be shifted in four directions:

**Up:** Opens the speller to enter alphanumeric information (e.g., navigation address).

**Down:** Moves down through a menu.

**Left/Right:** Opens Selection and options menu, same as control buttons.

### 2. Control Buttons

**Left:** The left control button opens the Selection menu to call up further functions for individual menu items (e.g., RADIO).

**Right:** The right control button opens the Options menu to select and confirm specific functions for individual menu items.

### 3. NAV/MAP TEL Function Switch

**NAV/MAP:** Toggle up repeatedly on the NAV/MAP to switch the display between Navigation input mode and Map mode.

**TEL:** Toggle down to enter the Telephone menu to access the Contact directory.

### 4. MENU Button

Opens the selection menu in a given function (e.g., RADIO, TEL, NAV, etc.).

### 5. RADIO/MEDIA Function Switch

**RADIO:** The RADIO menu allows you to select or manage radio options, including presets and equalization. Toggle up repeatedly to move through radio bands (AM, FM, SAT).

**MEDIA:** Allows you to select auxiliary devices and manage music and video content in folders, playlists and tracks. Toggle down repeatedly to move through the available Media sources (e.g., Bluetooth, SD, DVD, etc.).

### 6. BACK Button

Moves back through the menu hierarchy in reverse order of your recent selections. When entering text, pressing BACK will delete a character. Pressing and holding will remove all characters on a line.

### 7. Infotainment Control

Turns the MMI Infotainment system on and off and controls volume. Tilting the knob to the right or left will move through tracks or preset radio stations. Pressing briefly mutes audio. Press and hold to turn system off.



## ⚠ Warnings: MMI® Controls

- ▶ Only use the Infotainment system when traffic conditions permit and always in a way that allows you to maintain complete control over your vehicle.
- ▶ Adjust the volume of the audio system so that signals from outside the vehicle, such as police and fire sirens, can be heard easily at all times.

# MMI® Controls

## Navigation

## Climate Control & Cruise Control

## Audi smartphone interface

## Bluetooth® & Voice Recognition

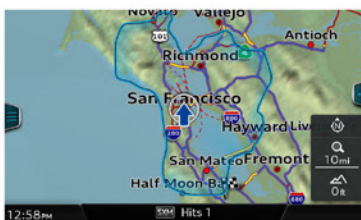
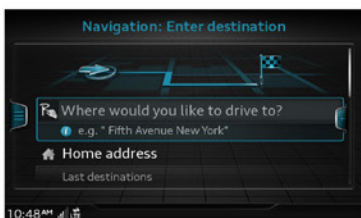
## e-tron® Charging & Driving Modes

# Audi Navigation

## Setting a Destination

Your MMI Navigation system has extraordinary capabilities to enhance your drive with user-definable views, routing selections and more. Get started with setting destinations and discover more as you become familiar with the interface.

1. Toggle the NAV/MAP switch to open the Destination entry input screen.
2. Use the touchpad to write the address or Point Of Interest name, or shift the control knob forward to open the speller and enter information by manually selecting letters and numbers. Press the BACK button to return to writing mode.
3. Available addresses will appear as information is entered, filtering to show only addresses meeting the currently entered information.
4. Select appropriate address, then select Start route guidance.
  - ▶ Additional destination features can be seen by pressing the left control button.
  - ▶ To cancel route guidance, select the right control button and select Cancel route guidance from menu.



Map outline signifies the maximum distance the e-tron can travel with its present battery charge in EV (electric driving) mode.

## Alternative Routes

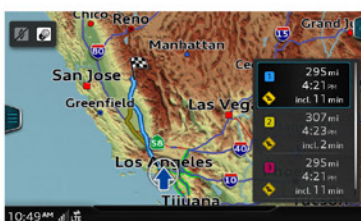
The Navigation system can display additional alternative routes based on speed, economy and traffic congestion. When this feature is enabled, alternative routes will always be displayed when route guidance is active.

To enable Alternative routes:

1. Select the NAV/MAP function.
2. Press the right control button and choose Navigation settings.
3. Select Show alternative routes to place a check mark in the box to enable this feature.

To select Alternative routes while route guidance is active:

1. Press the right control button » choose Show alternative routes.
  - ▶ If available, up to three route suggestions will be displayed and can be selected via the control knob (Route type: fast 1, fast alternative 2, economic route 3).



## Additional Settings

Additional settings can be configured within the Options menu using the right control button.

- ▶ Map settings include display settings to change between Standard and Google Earth view as well as 2D and 3D modes.
- ▶ Route criteria allows you to set the mode of travel to include or avoid roads such as HOV lanes, Toll roads and more.
- ▶ Voice guidance allows you to configure responses from Complete to Shortened, along with voice guidance volume.

**Note:** Always pay careful attention to the road, and do not drive while distracted. Enter destinations while vehicle is stationary away from traffic. When pressing the iNav button, the last navigation announcement will be repeated.

### Warnings: Navigation

- ▶ The demands of traffic require your full attention.
- ▶ Obey all traffic laws when driving.
- ▶ The route calculated by the Navigation system is a recommendation for reaching your destination.

## Navigation

## Climate Control & Cruise Control

## Audi smartphone interface

## Bluetooth® & Voice Recognition

## e-tron® Charging & Driving Modes

# 3-Zone Climate Control



## System Controls

Press any button or turn the temperature dial to activate the system.

### 1. AUTO

Your Climate Control system will help the cabin maintain your selected temperature by regulating the temperature, fan speed and airflow.

- ▶ When AUTO is selected, A/C will come on automatically to condition and dehumidify the cabin's interior.

### Synchronize Zones

Pressing the AUTO button for two seconds will synchronize the driver and passenger controls to the same temperature, fan speed and airflow.

### 2. HI/LO

When HI or LO are selected in AUTO mode as the desired temperature, the system will run continuously, heating or cooling with the fan at high speed.

### 3. Heated Seats

To warm up more quickly on a cool morning, turn on your heated seats.

### 4. Air Distribution

Direct airflow to defrost, panel and floor vents or a combination by selecting the appropriate airflow button or buttons.

### 5. Recirculation

The recirculation function helps prevent outside air and odors from entering the cabin. It may also be used in conjunction with A/C to cool the cabin more quickly. Do not leave the system in recirculation mode for extended driving.

### 6. Turning the System Off

Pressing the FAN button turns the system off.

### 7. Vent Flow

- ▶ To adjust the airflow amount, turn the ridged outer adjustment ring.
- ▶ To stop the airflow, turn the adjusting ring all the way to the right.
- ▶ To adjust the airflow direction, turn the air vent grille insert.



# Cruise Control

## Activate

To activate, pull the control stalk toward you to put it in the ON position.

## Set Cruising Speed

At your desired speed, press the SET button at the end of the stalk. The set speed, along with CRUISE, is shown in the Audi Virtual Cockpit or instrument cluster.

## Changing Speed

There are several ways to change your speed:

- ▶ Accelerate or decelerate, then press the SET button again.
- ▶ Push the stalk up or down one detent to increase/decrease speed in 1 mph increments.
- ▶ Push the stalk up or down to the second detent and release to increase/decrease speed in 5 mph increments.

- ▶ Hold the stalk up or down to increase/decrease speed; release when desired speed is reached.

## Cancel/Resume

1. To cancel, press the brake pedal or push the stalk slightly away from you to the CANCEL position.
2. The CRUISE light will go off.
3. To resume, pull the stalk toward you; you will return to your set speed.

*Your most recently set speed remains in memory until you turn Cruise Control or your Audi off.*



## ⚠ Warnings: Climate Control

- ▶ Poor visibility can lead to accidents.
- ▶ For safer driving, keep all windows free of ice, snow and fog.
- ▶ Become familiar as quickly as possible with the correct use and function of the Climate Control system, especially with the defrosting and defogging function.
- ▶ When the temperature is below freezing, only use the windshield washer system after the windshield has been warmed by the Climate Control system. The washer fluid could freeze on the windshield and impair visibility.
- ▶ You should not use the recirculation mode for an extended period since no fresh air is drawn in. With the air-conditioning switched off, the windows can fog up, which increases the risk of an accident.
- ▶ Individuals with reduced sensitivity to pain or temperature could develop burns when using the seat heating function. To reduce the risk of injury, these individuals should not use seat heating.

## ⚠ Warnings: Cruise Control

- ▶ Always pay attention to the traffic around you when the Cruise Control system is in operation. You are always responsible for your speed and the distance between your vehicle and other vehicles.
- ▶ For safety reasons, Cruise Control should not be used in the city, in stop-and-go traffic, on winding roads and when road conditions are poor (such as ice, fog, gravel, heavy rain and hydroplaning), because this increases the risk of an accident.
- ▶ Switch the Cruise Control off temporarily when driving in turning lanes, highway exits or in construction zones.
- ▶ Please note that unconsciously "resting" your foot on the accelerator pedal prevents the Cruise Control from braking. This is because pressing the accelerator pedal overrides the Cruise Control system.
- ▶ If a brake system malfunction such as overheating occurs when the Cruise Control system is switched on, the braking function in the system may be switched off. The rest of the Cruise Control system functions remain active as long as the CRUISE indicator light is on.
- ▶ You should only resume the stored speed if it is not too high for existing traffic conditions. Otherwise you increase the risk of an accident.

# Climate Control & Cruise Control

## Audi smartphone interface

## Bluetooth® & Voice Recognition

## e-tron® Charging & Driving Modes

# Audi smartphone interface

## Connecting

You can connect your Apple® iPhone or Android™ phone to the MMI. Certain content on your phone will be adapted to the Infotainment system display while driving and can be operated through the MMI controls\*. This gives you the benefit of the familiarity with your phone's system combined with the MMI display.

### To connect:

1. The vehicle must be stationary with the ignition on.
2. Connect your smartphone with a manufacturer approved cable to either USB port. Before using Android Auto™, you must download the Android Auto app from the Google Play™ Store. You must have an active Google account and internet connection.
3. You will see a connection prompt in the MMI.
4. Using the control knob, select to activate the device.
5. Respond to prompts as necessary from both the MMI, as well as the smartphone.

Once connected, you have access to the apps displayed on the screen. Select the apps using the MMI control knob.

*\*Not all apps will work with the Audi smartphone interface, and some functions may be limited. The functions that can be used depend on the operating system version and the software of the app being used. Some MMI functions may not be available when Apple CarPlay™ or Android Auto™ is active. Refer to [apple.com/ios/carplay/](http://apple.com/ios/carplay/) or [android.com/autof/](http://android.com/autof/) for additional information.*

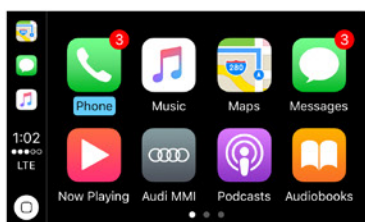
## Apple CarPlay™ Operation

- ▶ If a Bluetooth connection is active when CarPlay® is activated, it will disconnect Bluetooth and use CarPlay exclusively for telephone connectivity.
- ▶ MMI control knob function:
  - ▶ Turn the knob and press to open selected apps and control functions within that app.
  - ▶ Shift the knob down or up to change levels to access apps more quickly. Shift the control knob to the right to advance to the next screen.
- ▶ Press and hold the BACK button to return to the active app menu.



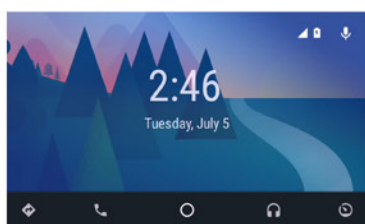
## With Apple CarPlay™ and Android Auto™ you can:

- ▶ Activate Siri® Voice Control or Talk to Google with a long press of the TALK button on the steering wheel.
- ▶ Make and receive calls.
- ▶ Send and receive text messages.
- ▶ Set reminders.
- ▶ Get turn-by-turn navigation.
- ▶ See recent places.
- ▶ Listen to music.



## Android Auto™ Operation

- ▶ If you had not previously paired your phone with Bluetooth, it will be paired automatically with your MMI system\*\*.
- ▶ MMI control knob function:
  - ▶ Shifting the knob down will change usage from within an open app allowing you to select another app.
  - ▶ Turning the knob and pressing will open the selected app.
  - ▶ Shifting left or right within an active app will open additional features or settings. For example, shifting to the right will activate Talk to Google.



- ▶ Use your fingers to “pinch” or “spread” the view using the MMI touchpad. Press to select a location to begin route guidance.

\*\*The Android phone may prompt to acknowledge additional requests.

## Access to Apple CarPlay™ and Android Auto™

If you have an active Apple CarPlay or Android Auto session and have accessed another MMI function and wish to return:

1. Select the MENU function button.
2. Scroll using the MMI control knob to select Apple CarPlay or Android Auto from the Menu.

## Connection Manager

If your device is presently using MMI Media as the source and you wish to activate Apple CarPlay or Android Auto instead:

1. Select the MENU function button.
2. Scroll using the MMI control knob to select Audi smartphone interface. This will open the Connection Manager.
3. To activate, scroll to Audi smartphone and press the control knob, and place a check in the box for your device. Remove the check to deactivate from the Audi smartphone interface.



- ▶ The Connection Manager can also be accessed by selecting Menu » Settings » Connection Manager.

### Note:

Always pay careful attention to the road, and do not drive while distracted. Audi smartphone interface features require compatible device, operating systems, and mobile app. CarPlay™ requires iPhone 5 or newer. For Android Auto™, visit [g.co/autocheck](http://g.co/autocheck) on your phones browser to see if it is compatible. Siri™ must be enabled on device to activate Siri features. Standard text and data usage rates apply. See mobile app provider for terms and privacy. Android Auto™ is a trademark of Google Inc. Apple CarPlay™ is a trademark of Apple Inc.

### ⚠ Warnings: Audi smartphone interface

- ▶ Only use the Infotainment system when traffic conditions permit and always in a way that allows you to maintain complete control over your vehicle.
- ▶ Always make sure that you follow the instructions and heed the WARNINGS in this Manual. It is in your interest and in the interest of your passengers.
- ▶ Always keep the complete Owner's Literature in your Audi when you lend or sell your vehicle so that this important information will always be available to the driver and passengers.
- ▶ Always keep the Owner's Literature handy so that you can find it easily if you have questions. Driving requires your complete and undivided attention. As the driver, you have complete responsibility for safety in traffic. Never operate mobile devices while driving, because this increases the risk of an accident.

# Audi smartphone interface

## Bluetooth® & Voice Recognition

## e-tron® Charging & Driving Modes

# Bluetooth® Pairing

## Pairing a Compatible Device

Bluetooth pairing is a one-time procedure. Once paired, your phone will automatically connect when you start your vehicle\*. Your contact list will automatically synchronize, allowing you to access contacts and make and receive calls through the Infotainment system. For information regarding phone compatibility, visit [audiusa.com/bluetooth](http://audiusa.com/bluetooth).

1. Switch ignition to Accessories mode.
2. Activate your phone's Bluetooth and set to pairing or discovery mode.
3. In the list of available devices, select the Audi MMI listing for the vehicle.
4. When the prompt appears in the MMI, select Accept using the control knob.
5. Confirm the PIN matches and select Yes in response to the prompt.
6. Select Pair on your device.

\*Some phones may require an additional response to prompts to allow full connectivity.

## Wireless Audio Streaming

Streams music wirelessly via a Bluetooth connection. To connect a device (or additional devices), follow the pairing instructions above. Once paired, Bluetooth audio player is established automatically.

To stream audio:

- ▶ Select MEDIA » press left control button » select Bluetooth as the source.
- ▶ Use the BACK button to browse within playlists, Artists, Songs, etc.



Two active phones can be connected simultaneously to receive calls through the MMI, giving you primary and secondary devices. To change the order of devices:

1. Select the TEL function.
2. Press the right control button.
3. Select Switch Main and Additional phone.
4. This will also make the contact list from the new primary phone active.

If the primary phone is in use, the Secondary phone will only receive calls from the phone, not the MMI system.



# Voice Recognition

## Call by Name

When using Voice Recognition, speak in a normal voice, facing forward. Keep cabin noise to a minimum.

1. Press the TALK button on the steering wheel. A beep will sound.
2. Say "Call" <Name from directory> (e.g., "Call John Smith").

3. After system response, confirm request by saying, "Yes." The number will be dialed. You may also say "Cancel," to cancel the call.
  - ▶ If multiple numbers are stored for a given contact, the system will ask which you wish to dial. To avoid this, indicate it in your initial request (e.g., "Call John Smith, mobile").

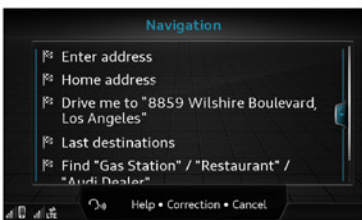
## Entering a Destination in Navigation

1. Press the TALK button on the steering wheel. A beep will sound.
2. Say "Drive me to" and speak entire address; e.g., "eight eight five nine Wilshire Boulevard, Los Angeles." (Speak in single digits.)
  - ▶ If your destination is in another state, say, "Change state" when prompted to enter address.
3. The system will locate the address and confirm. Say "Yes" after the command to begin route guidance.
4. The system will repeat the address for confirmation and ask if you would like to start route guidance. After the tone, say "Yes" and guidance will begin.

There are three ways to cancel Voice Recognition:

- ▶ Say "Cancel" at the voice prompt.
- ▶ Press any button on the MMI controls.
- ▶ Or, press and hold the TALK button on steering wheel until you hear "Cancel."

No navigation prompts or traffic announcements are given when a dialog is running. Refer to your Owner's Manual for additional Voice Recognition commands.



### Note:

#### Bluetooth® Pairing

Apple products connected via the USB cable will disable Bluetooth audio. To reestablish Bluetooth audio, disconnect the USB cable and select the device from the Media/Source menu. Bluetooth® pairing requires compatible device. See your phone's Owner's Manual for specific Bluetooth activation instructions. Vehicle must be stationary with the parking brake engaged while performing this operation. Once paired, the Bluetooth symbol appears in the MMI screen along with network strength bars, and it will be displayed whenever a paired phone is connected to the Infotainment system.

#### ⚠ Warnings: Bluetooth® Pairing & Voice Recognition

- ▶ Only use the Infotainment system when traffic conditions permit and always in a way that allows you to maintain complete control over your vehicle.
- ▶ Medical experts warn that cell phones can interfere with the function of pacemakers. Always maintain a minimum distance of 20 centimeters between the cell phone antenna and the pacemaker.
- ▶ Do not carry the cell phone in a pocket directly over the pacemaker when the phone is switched on. Switch the cell phone off immediately if you suspect it may be interfering with the pacemaker.
- ▶ Do not use the Voice Recognition system in emergencies because your voice may change in stressful situations. It may take longer to dial the number or the system may not be able to dial it at all. Dial the emergency number manually.
- ▶ Switch your cell phone off in areas where there is a risk of an explosion. These locations are not always clearly marked. This may include gas stations, fuel and chemical storage facilities or transport vehicles, or locations where fuel vapors (such as propane or gasoline vapor in vehicles or buildings), chemicals or large quantities of dust particles (such as flour, sawdust or metal) may be present in the air. This also applies to all other locations where you would normally turn your vehicle engine off.
- ▶ The demands of traffic require your full attention.
- ▶ Because your phone works with radio signals, a connection cannot be guaranteed under all circumstances. Do not rely on only your phone when it comes to essential communication (such as a medical emergency).
- ▶ Always follow the instructions given by emergency personnel during an emergency call and only end the call when they instruct you to do so.

# Bluetooth® & Voice Recognition

# e-tron® Charging & Driving Modes

# Charging Your e-tron®

Charging can be accomplished using the portable charging unit included with the vehicle or a commercial charging station. Full charging times will vary depending on charging station voltage, current level of the battery, ambient temperature and other variables. You may charge the vehicle when there is a partial charge in the battery.

## To plug in an e-tron:

1. The charging port is under the Audi rings on the vehicle front grille.
2. To open the charging port, the vehicle must be unlocked.
3. Turn the dial in the second ring to the left, and the four rings will slide open, revealing the charging port.
4. Remove the rubber cap and insert the charging plug fully into the port until the latch clicks. No electricity flows until the cable is connected and the connection is verified.
  - ▶ A power plug indicator light in the instrument cluster illuminates when the e-tron is being charged.
  - ▶ The e-tron's gas-electric hybrid drive system will not turn on if the cable is connected to the vehicle, although you may still operate accessories.

## Portable Charger

The charger included with your e-tron is capable of using either a 120V or 240V electrical power source. To use portable charger:

1. First, plug the charger into an electrical outlet. Then plug the e-tron charging port into the vehicle.
2. The power indicator will flash blue during self-test, then turn white.
3. The message "Unplugged" will appear in the display.
4. The status LED will then turn green and the message, "Plugged and Charging" will appear.
  - ▶ Power level may be set to 50% to reduce overall electrical load.
  - ▶ You may enter a PIN code to prevent unauthorized use of the charger.



## e-tron Charging

There are two selectable charging modes located next to the charging port:

- (A) Scheduled charging.
- (B) Direct or immediate charging.

If no timer is set, direct charging begins automatically when the charge cable is plugged in.

(C) LED charge status.



LED	Charging Status
Blinking green	Indicates there is a programmed charging time.
Pulsing green	Indicates the vehicle is charging.
Solid green	e-tron is fully charged.
Flashing yellow	Gear selector is not in Park.
Solid yellow	No power to the charger.
Flashing red	Charging malfunction.
Solid red	Charging connector is incorrectly connected.

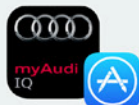


To learn more about how to operate the features within your Audi.

**TEXT 2018A3 to 38981**

Do not text and drive.  
Message and data rates may apply.

To learn more about your features, call your Audi technologist.  
1-855-750-TECH (8324).



You can have Audi feature information on demand with the myAudi IQ app, which delivers video demos for your Audi. Download the iOS app\* now and put Audi knowledge in your pocket.

\*Requires iOS 7.0 or later and available on iPad\* only.

\*e-tron mobile app available in Google Play or Apple App Store, depending on brand of smartphone.

\*\*Electric drive up to 80 mph.

\*\*\*Navigation system is needed in vehicle to complete preferred charging using the MMI system.

Note:  
Please see the Owner's Manual for complete instructions and safety warnings.

### ⚠ Warnings: e-tron® Charging

- ▶ Sockets that are installed incorrectly can cause electric shock or fire when charging the high-voltage battery using the vehicle charging connection.
- ▶ Installation and setup of the household connection for the Audi e-tron charging system may only be performed by a qualified electrician. The qualified electrician is thereby fully responsible for adhering to applicable standards and regulations.
- ▶ Make sure that the selected charging connection is suitable for drawing 16 amps.
- ▶ Make sure that the household socket is grounded and shielded from water.
- ▶ Always check the functionality of the GFI outlet before connecting the charging cable.
- ▶ Never use a damaged GFI outlet.
- ▶ The Audi e-tron charging system may only be used with a properly grounded power network. It cannot be used with non-grounded power networks (such as IT networks).
- ▶ Please follow the safety precautions in the assembly instructions for the Audi charging dock or the Audi Charging clips.
- ▶ If you are not familiar with the sockets or the electrical installation or it has not been checked by qualified experts, never use it for charging. Even very low charging currents can cause serious damage and in particular fires if the socket or electrical installation is in bad condition. If necessary, get expert assistance from a qualified electrical installation specialist.
- ▶ Incorrect handling of the connector contacts can cause electric shock or fire.
- ▶ Do not touch the contacts on the vehicle charging port and on the Audi e-tron charging system.
- ▶ Do not insert any objects in the vehicle charging port or in the Audi e-tron charging system.
- ▶ Protect the sockets and connectors against any moisture, water and other fluids.
- ▶ Using a damaged or incorrect charging cable or a damaged or incorrect socket, using the Audi e-tron charging system incorrectly or disregarding the safety precautions could cause short circuiting, electric shock, explosions, fires or burns.
- ▶ Do not use the Audi e-tron charging system if it is damaged and/or dirty. Check the cable and connector for damage and dirt before using.
- ▶ The Audi e-tron charging system must only be connected to sockets that are installed correctly and that are not damaged as well as to electrical installations that have no faults.
- ▶ Do not use any extension cords, cable reels, power strips or (travel) adapters.
- ▶ Disconnect the Audi e-tron charging system from the power network during a thunderstorm.
- ▶ Do not modify or repair any electrical components.
- ▶ Never immerse the Audi e-tron charging system and connectors in water.
- ▶ The Audi e-tron charging system must only be cleaned when the control unit is completely disconnected from the power supply and from the vehicle. Use a dry towel to clean.
- ▶ If a 110-volt household socket is used for charging, only connect one vehicle at a time to the same circuit. Use a different circuit if an additional vehicle needs to be charged at the same time. Note the maximum permitted current draw for the circuit. Contact a qualified electrical technician if there is any doubt.
- ▶ The components in the Audi e-tron charging system can trigger sparks, which can cause flammable or explosive fumes to ignite.
- ▶ To reduce the risk of explosions, especially in garages, make sure the control unit is at least 19 inches (50 cm) above the floor when charging.
- ▶ Do not use the Audi e-tron charging system in areas at risk for explosions.
- ▶ The Audi e-tron charging system is only suited for use on Audi vehicles and vehicles within the Volkswagen Group. Using the device on vehicles made by another manufacturer is not authorized.
- ▶ Always remove the power cable from the socket before changing the power cable or vehicle cable.
- ▶ Always follow the instructions given when charging the high-voltage battery. Do not remove the vehicle charging cable from the socket during the charging process. End the charging process before removing the vehicle charging cable from the socket.
- ▶ The Audi e-tron charging system may only be used as one unit composed of power cables, the control unit and vehicle cable. We recommend using only cables approved by Audi.
- ▶ If the vehicle charging cable is not secured or positioned correctly, it can slide out of place and endanger vehicle occupants when braking, when changing directions, or in an accident.
- ▶ Never transport the Audi e-tron charging system or the special charging cable unsecured.
- ▶ Store the Audi e-tron charging system or the special charging cable in the storage bag in the luggage compartment.
- ▶ Always transport the storage bag in the luggage compartment and never in the passenger compartment (for example the seats or in front of them).
- ▶ There is an error in the control unit if the LED is red. Disconnect the control unit from the power supply.

### ⚠ Warnings: Driving Modes

- ▶ Never leave the vehicle unattended in drive-ready mode with the gear engaged. The vehicle can start moving ("creeping") even if the gasoline engine is switched off, since the electric motor is still operating. This may cause collisions and severe or fatal injuries.



# Charging Your e-tron®

Charging can be accomplished using the portable charging unit included with the vehicle or a commercial charging station. Full charging times will vary depending on charging station voltage, current level of the battery, ambient temperature and other variables. You may charge the vehicle when there is a partial charge in the battery.

## To plug in an e-tron:

1. The charging port is under the Audi rings on the vehicle front grille.
2. To open the charging port, the vehicle must be unlocked.
3. Turn the dial in the second ring to the left, and the four rings will slide open, revealing the charging port.
4. Remove the rubber cap and insert the charging plug fully into the port until the latch clicks. No electricity flows until the cable is connected and the connection is verified.
  - ▶ A power plug indicator light in the instrument cluster illuminates when the e-tron is being charged.
  - ▶ The e-tron's gas-electric hybrid drive system will not turn on if the cable is connected to the vehicle, although you may still operate accessories.

## Portable Charger

The charger included with your e-tron is capable of using either a 120V or 240V electrical power source. To use portable charger:

1. First, plug the charger into an electrical outlet. Then plug the e-tron charging port into the vehicle.
2. The power indicator will flash blue during self-test, then turn white.
3. The message "Unplugged" will appear in the display.
4. The status LED will then turn green and the message, "Plugged and Charging" will appear.
  - ▶ Power level may be set to 50% to reduce overall electrical load.
  - ▶ You may enter a PIN code to prevent unauthorized use of the charger.



## e-tron Charging

There are two selectable charging modes located next to the charging port:

- (A) Scheduled charging.
- (B) Direct or immediate charging.

If no timer is set, direct charging begins automatically when the charge cable is plugged in.

(C) LED charge status.



LED	Charging Status
Blinking green	Indicates there is a programmed charging time.
Pulsing green	Indicates the vehicle is charging.
Solid green	e-tron is fully charged.
Flashing yellow	Gear selector is not in Park.
Solid yellow	No power to the charger.
Flashing red	Charging malfunction.
Solid red	Charging connector is incorrectly connected.

## Preferred Charging (Scheduling)

Scheduling allows you to charge the vehicle during off-peak energy demand. You may set scheduling times using the e-tron app\*, or MMI Navigation plus (optional)\*\*.

To set a charging timer, select: MENU button » Vehicle » left control button » Charge » right control button » Program timer.

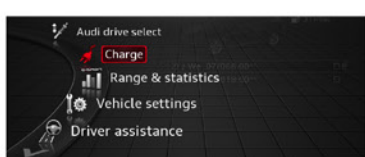
1. Select Individual timer or Repeat timer.
2. Set the departure time, the date or day of the week.
3. Press the BACK button.
4. To activate the desired timer, confirm setting with the control knob. A ✓ appears in the box.

## Air Conditioning/Heat Scheduling

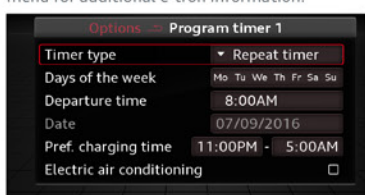
You may also schedule Climate Control activation to cool or heat the cabin prior to your departure from the Program timer. Checking the Electric air conditioner box will enable this feature. When activated, the Climate Control system will heat or cool the vehicle to reach your set temperature at your departure time. This will help to maximize the battery life and driving range.

## e-tron® Mobile App

The mobile app can be used to schedule repeat charging events or individual events, and expected departure times\*. Audi connect® is not required to schedule charging with the mobile app.



Select Range and Statistics from the vehicle menu for additional e-tron information.



Audi A3 e-tron connect App available in iTunes and Google Play Store.

## Stopping a Charge

You may unplug the charging cord from the port at any time. To unlock the vehicle charging connector, press the release and remove the vehicle charging connector. Always cap and close the port when not charging.

## Power Usage Displays

You can monitor the estimated miles available for both electric and gas engine drive modes. You can also monitor current energy transfer from the electric and gas engines, and regenerative "brake" power flow to the battery.

## Driver Information System (DIS)

Press the left thumbwheel on the steering wheel to display driver information available in the vehicle menu. The range display shows (1) electric motor range or combined total range, (2) gasoline engine range and (3) electric motor range. The top of the display will indicate the EV driving mode status. (4) Displays EV modes: active EV, standby EV, or currently unavailable EV.



## Power Meter

The power meter is located in the instrument cluster in place of the tachometer and shows the current demand for electricity or fuel, as well as the current battery charge level. When the vehicle is turned on, the needle will indicate e-tron READY.



## Energy Flow Display

To view the status of power transfer from the gas engine and from/to the battery, press MENU » Vehicle » Left control button » Audi drive select. The A3 e-tron image will indicate current power flow.



# Driving Modes

These modes can be selected by toggling the EV switch in the center dash panel. The modes will display in the MMI Navigation plus (optional) display or DIS. If the battery is fully charged or discharged, some modes may not be available.

## EV (electric driving)

The e-tron operates off of electric power only. EV Mode is the default mode for the e-tron and is best in city and stop-and-go driving or relatively short distances. When the battery becomes discharged, the e-tron switches to gas power.

## Hybrid (use battery charge)

Combines both electric and gas-engine power, although the electric motor and battery are used as much as possible in this mode. The gas engine may turn off at full stops to maximize fuel economy.

## Battery Hold (maintain charge)

This mode is used to save battery power and uses gas engine power almost exclusively. Regenerative braking will supply some charging to the battery.

## Tips for Efficient Driving

Your driving mode strategy will vary depending on driving conditions and will impact vehicle fuel economy.

- ▶ Selecting Sport while in EV mode will automatically switch the system to Hold Battery mode. Sport mode will deplete the battery more quickly.
- ▶ Pushing the accelerator fully to the floor while in EV mode will engage the gasoline engine in a "kick-down" for greater acceleration at higher speeds and remain in Hold Battery mode unless switched back to EV mode.
- ▶ Coasting with the accelerator released while in Hybrid mode switches off the gas engine and disengages power. The electric motor will act as a generator to help charge the battery.



## Indicator Lights

MY18-A3-02

For additional information on Indicator lights, refer to your vehicle's Owner's Manual.

	Central indicator light, Audi pre sense		Electromechanical parking brake		Electromechanical steering		Transmission
	Brake system		Hill hold assist		Suspension control		Electromechanical parking brake
	Electromechanical parking brake		Tire pressure		Power top		Electromechanical parking brake
	Cooling system		Tire pressure		Active lane assist		Electromechanical parking brake
	Engine oil pressure		Engine control		Side assist		Hill hold assist
	Alternator		Engine control		Pre sense		Speed warning system
	Safety belt		Malfunction indicator lamp (MIL)		e-tron: system warning		Cruise control system
	Electromechanical steering		Engine speed limitation		e-tron: driving power		Adaptive cruise control
	Steering lock		Engine oil level (MIN)		e-tron: driving power		Adaptive cruise control
	Engine stop while driving		Engine oil sensor		e-tron: driving power		Active lane assist
	Transmission		Battery charge		e-tron: vehicle sound		Side assist
	Hood		Tank system		e-tron: charging system		Pre sense
	Adaptive cruise control		Washer fluid level		Turn signals		High beam assistant
	e-tron: system warning		Windshield wipers		Turn signals		High beam assistant
	e-tron: charging system		Remote control key		Cruise control system		High beams
	Central indicator light, brake booster		Driver's door		Adaptive cruise control		e-tron: electric drive ready mode
	Electronic Stabilization Control (ESC)		Battery in remote control key		Adaptive cruise control		e-tron: electric drive ready mode
	Electronic Stabilization Control (ESC)		Bulb failure indicator		Adaptive cruise control		e-tron: charging system
	Electronic Stabilization Control (ESC)		Headlight range control system		Adaptive cruise control		e-tron: charging system
	ABS OFF		Adaptive light		Active lane assist		e-tron: gasoline engine
	Anti-lock braking system (ABS)		Light/rain sensor		Start/Stop system		e-tron: tank system
	Safety systems		Transmission		Start/Stop system		e-tron: charging system
	Brake pads		Steering lock		Convenience key		Engine start system
	Brake pads		Engine start system		Engine start system		

Audi Customer Support (800) 822-2834

The information within this guide must be used in conjunction with the information in the Audi Owner's Manual. Refer to your vehicle's Owner's Manual for all information and warnings. By using this guide, you acknowledge that you are aware of and have read the warnings and information provided in the Owner's Manual on the topics in this guide and will use this information to augment that material. Always pay careful attention to the road, and do not drive while distracted.

©2017 Audi of America, Inc. All rights reserved.