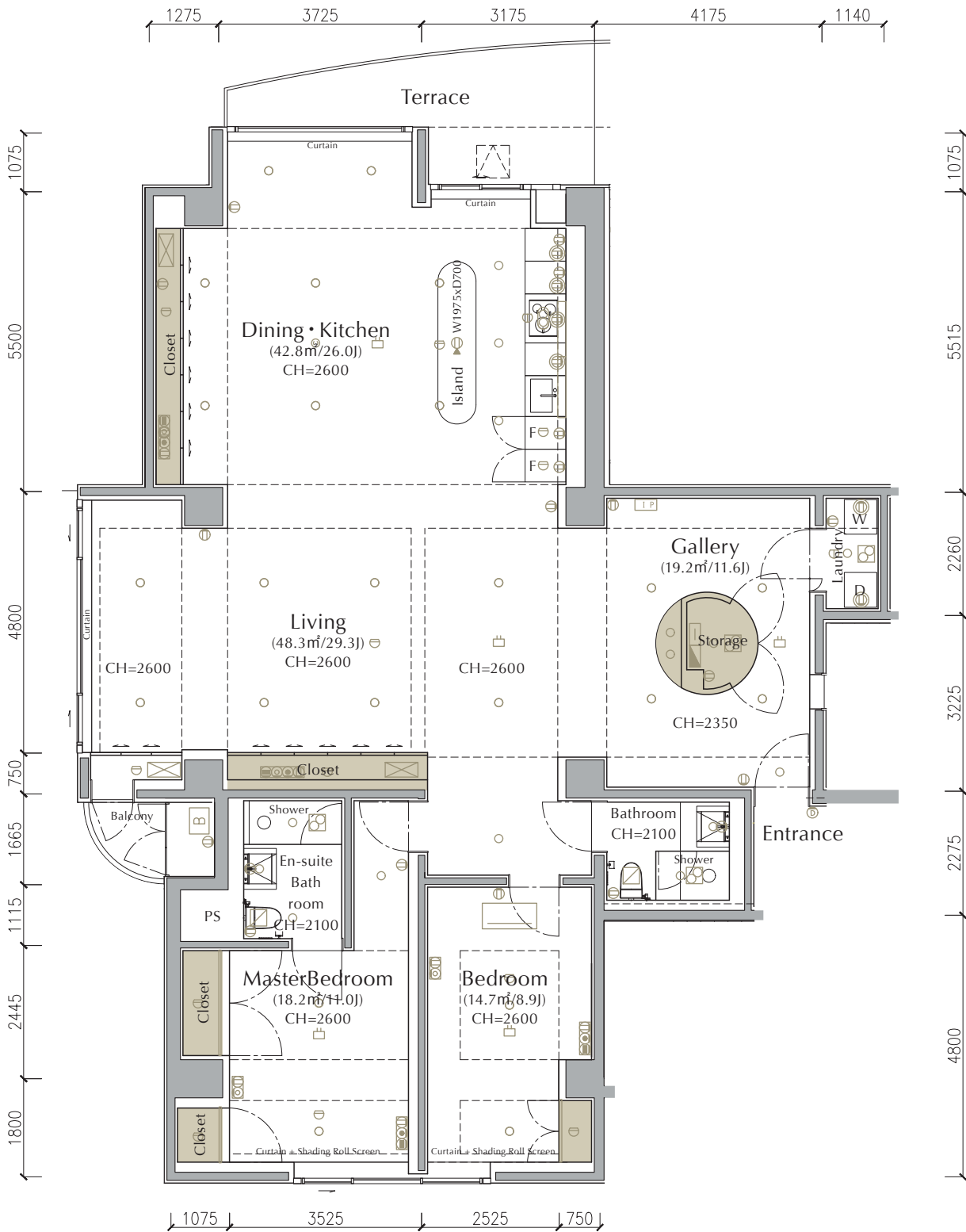


THE AVIOR

EAST RESIDENCE

Unit Number **1C**



Scale 1/110



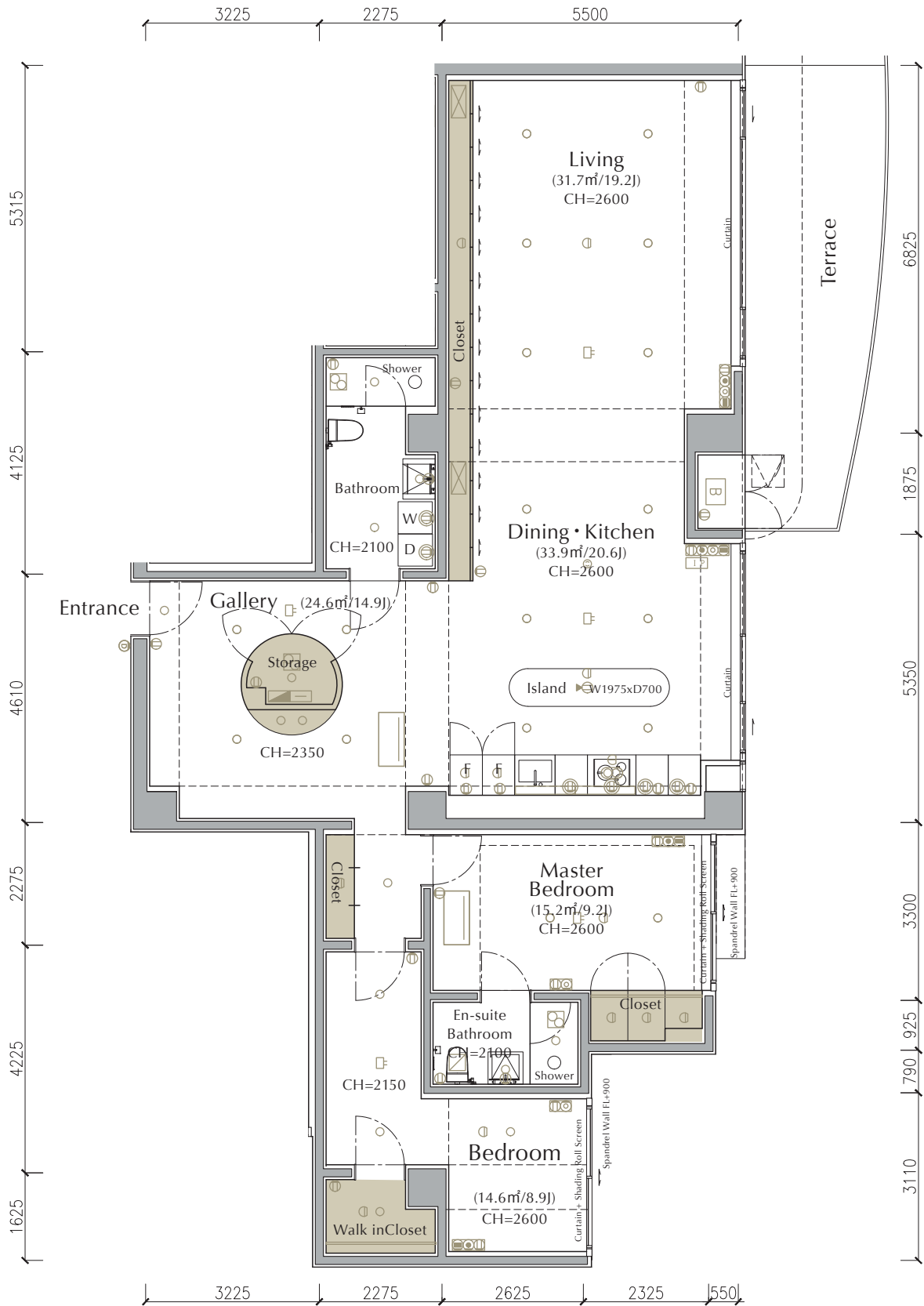
Due to potential changes in construction, the dimensions inside each units, partition wall position, storage size, tatami number display, ceiling height and equipment are subject to change. (As of October 1, 2018)

施工上の理由等により各住戸内の寸法、間仕切壁位置、収納部サイズ、畳数表示、天井高さ、設備機器配置に変更が生じる可能性があります。(2018.10.01現在)

THE AVIOR

EAST RESIDENCE

Unit Number **1D**



Scale 1/110

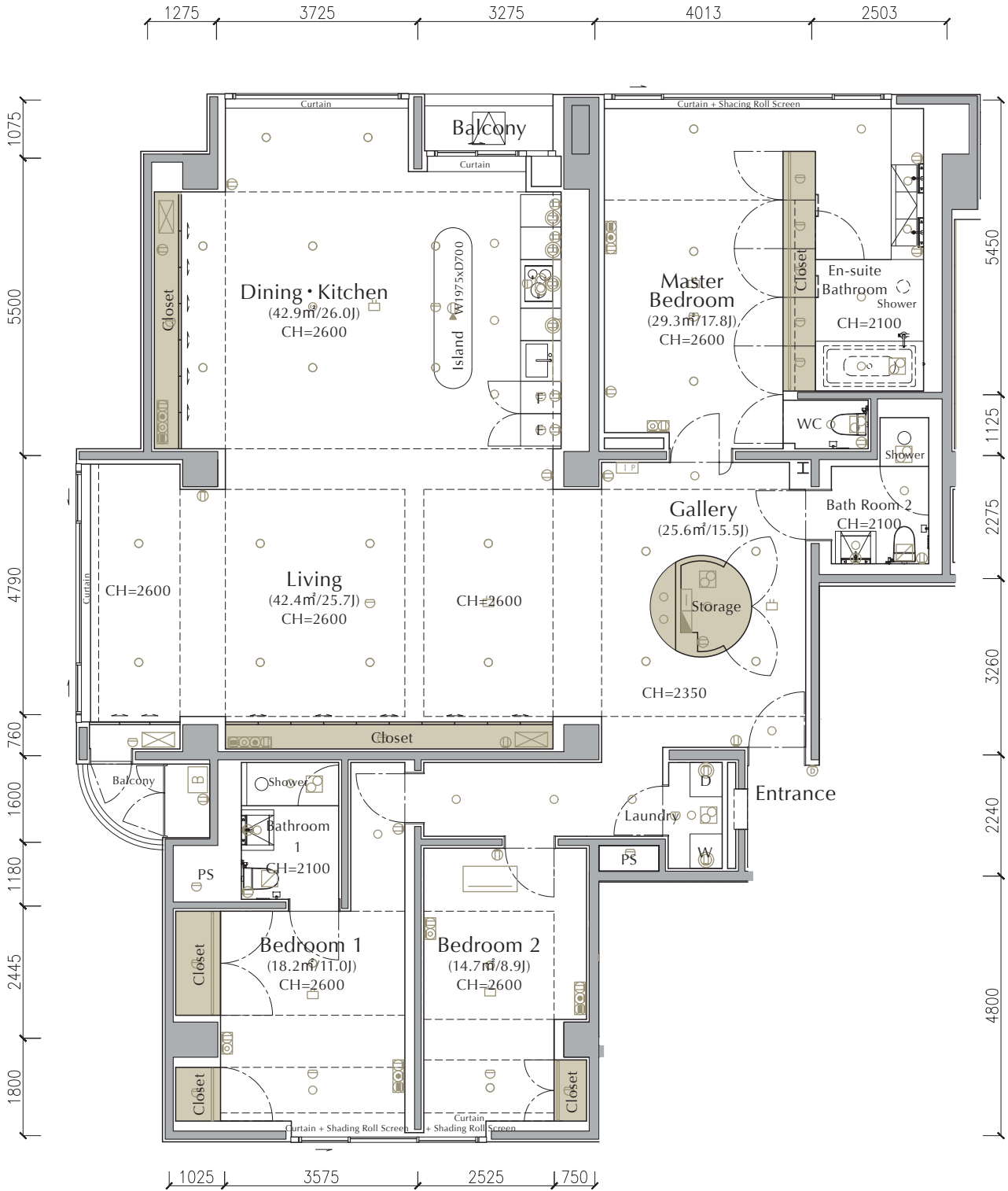
Due to potential changes in construction, the dimensions inside each units, partition wall position, storage size, tatami number display, ceiling height and equipment are subject to change. (As of October 1, 2018)

施工上の理由等により各住戸内の寸法、間仕切壁位置、収納部サイズ、畳数表示、天井高さ、設備機器配置に変更が生じる可能性があります。(2018.10.01現在)

THE AVIOR

EAST RESIDENCE

Unit Number **2C**



Scale 1/110



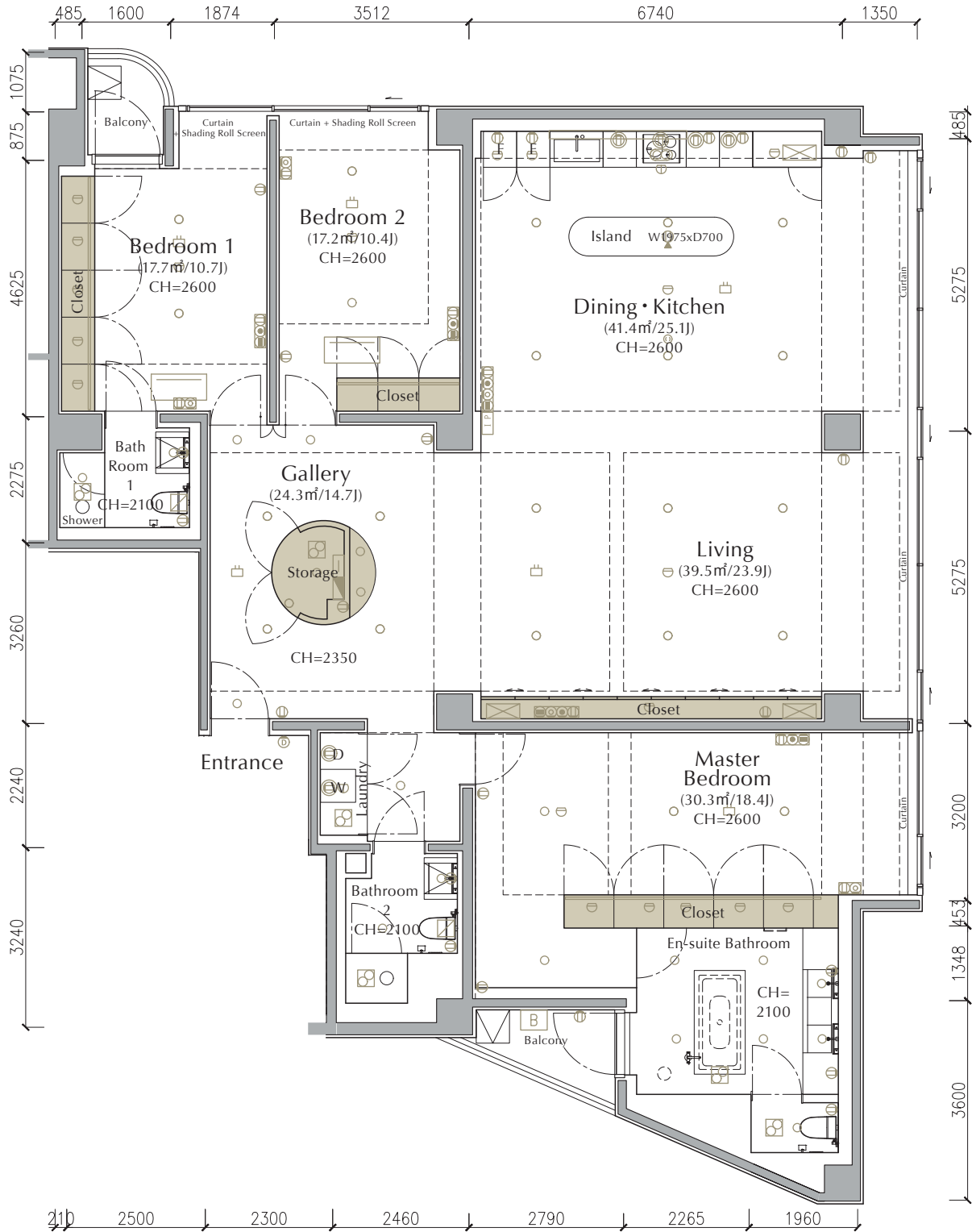
Due to potential changes in construction, the dimensions inside each units, partition wall position, storage size, tatami number display, ceiling height and equipment are subject to change. (As of October 1, 2018)

施工上の理由等により各住戸内の寸法、間仕切壁位置、収納部サイズ、畳数表示、天井高さ、設備機器配置に変更が生じる可能性があります。(2018.10.01現在)

THE AVIOR

EAST RESIDENCE

Unit Number **2D**



Scale 1/110



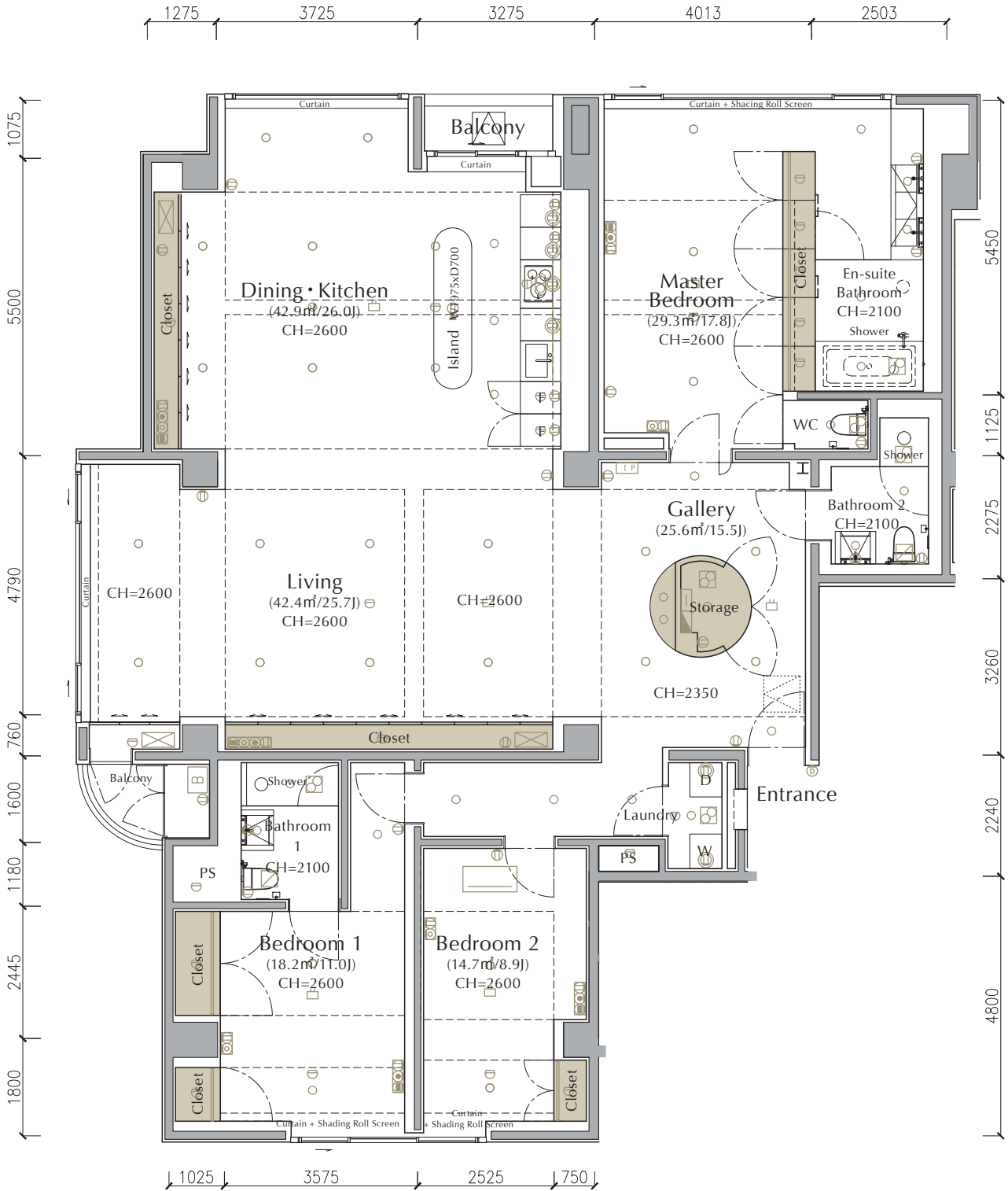
Due to potential changes in construction, the dimensions inside each units, partition wall position, storage size, tatami number display, ceiling height and equipment are subject to change. (As of October 1, 2018)

施工上の理由等により各住戸内の寸法、間仕切壁位置、収納部サイズ、畳数表示、天井高さ、設備機器配置に変更が生じる可能性があります。(2018.10.01現在)

THE AVIOR

EAST RESIDENCE

Unit Number **3C**



Scale 1/110



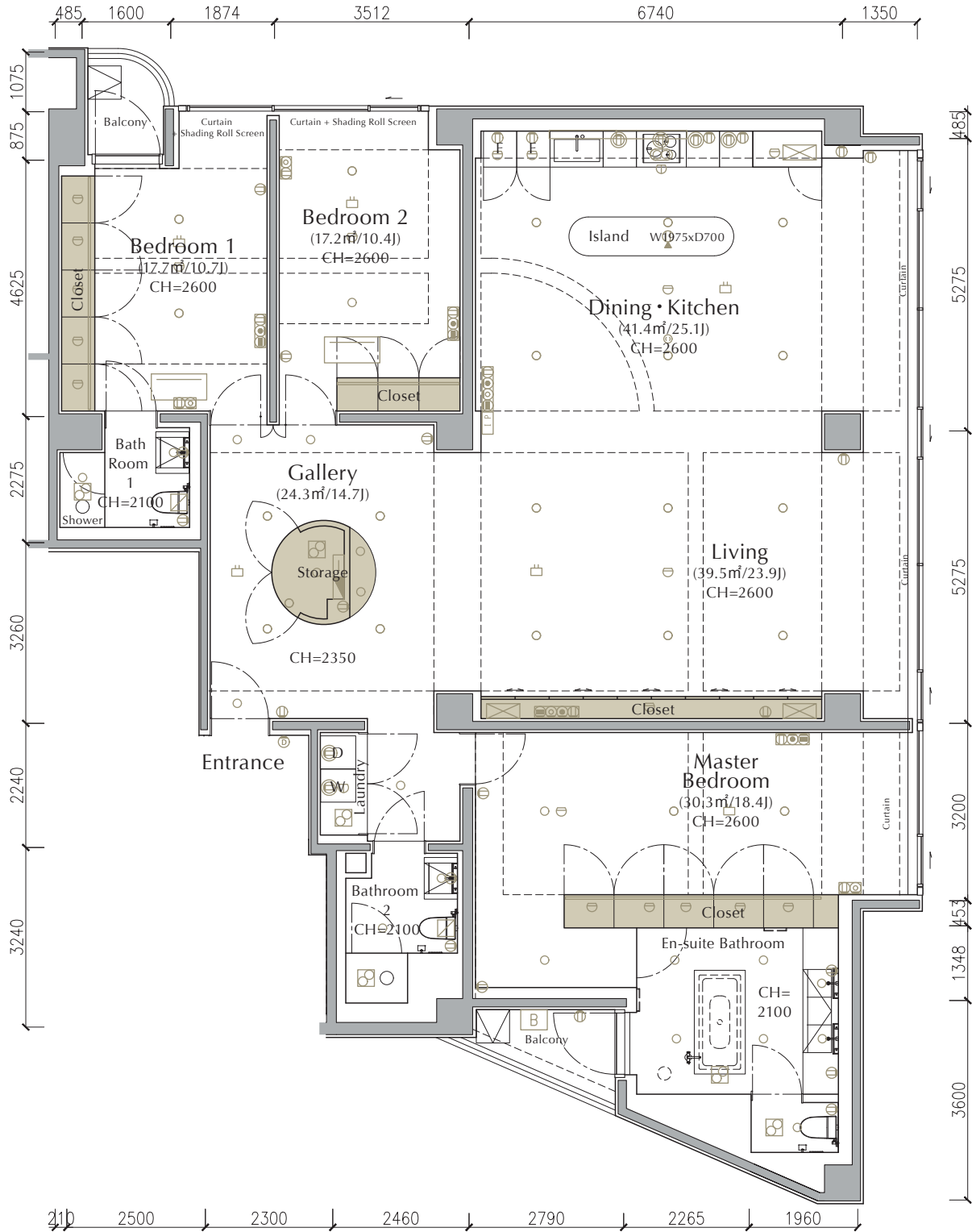
Due to potential changes in construction, the dimensions inside each units, partition wall position, storage size, tatami number display, ceiling height and equipment are subject to change. (As of October 1, 2018)

施工上の理由等により各住戸内の寸法、間仕切壁位置、収納部サイズ、畳数表示、天井高さ、設備機器配置に変更が生じる可能性があります。(2018.10.01現在)

THE AVIOR

EAST RESIDENCE

Unit Number **3D**



Scale 1/110



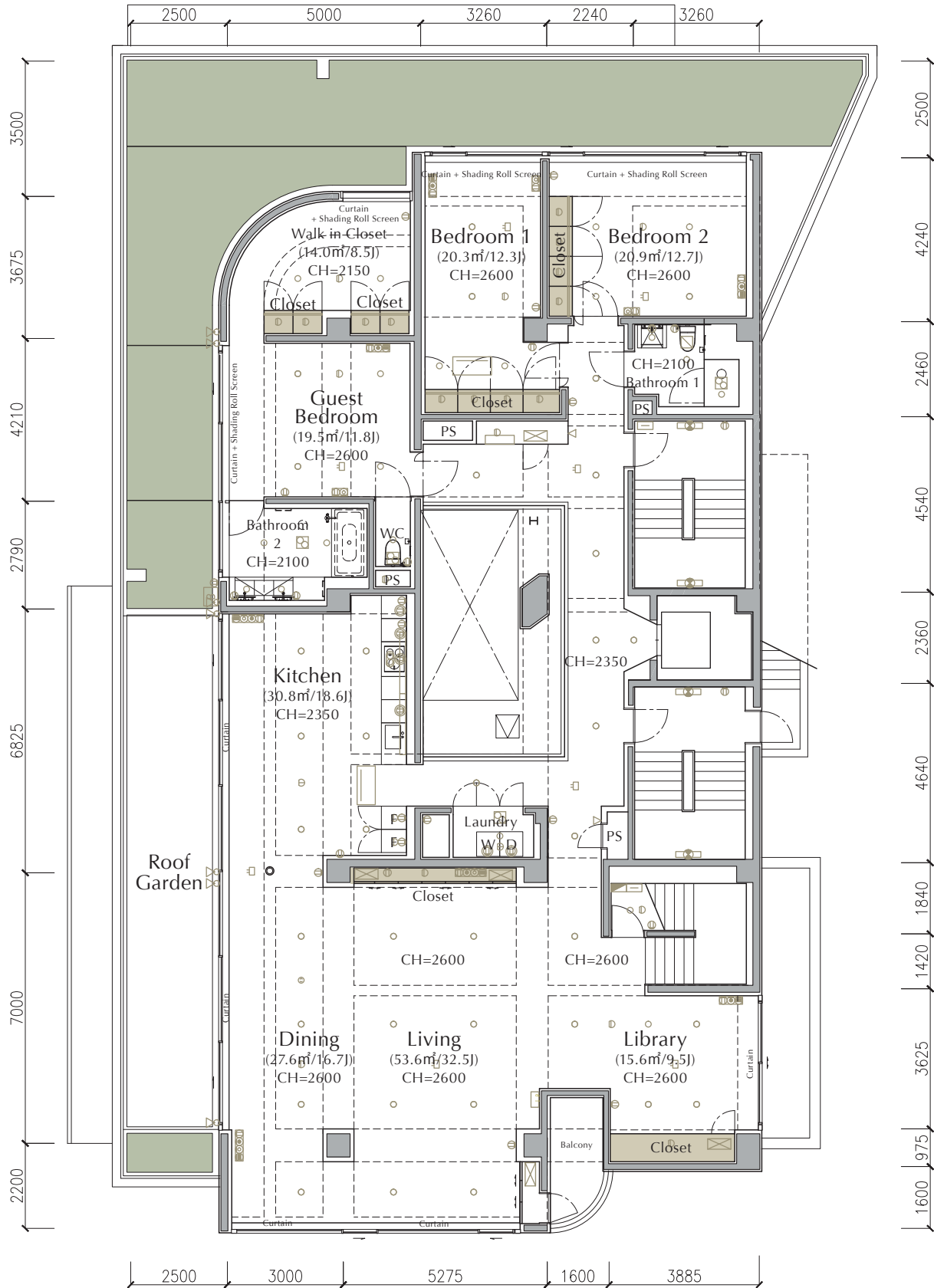
Due to potential changes in construction, the dimensions inside each units, partition wall position, storage size, tatami number display, ceiling height and equipment are subject to change. (As of October 1, 2018)

施工上の理由等により各住戸内の寸法、間仕切壁位置、収納部サイズ、畳数表示、天井高さ、設備機器配置に変更が生じる可能性があります。(2018.10.01現在)

THE AVIOR

EAST RESIDENCE

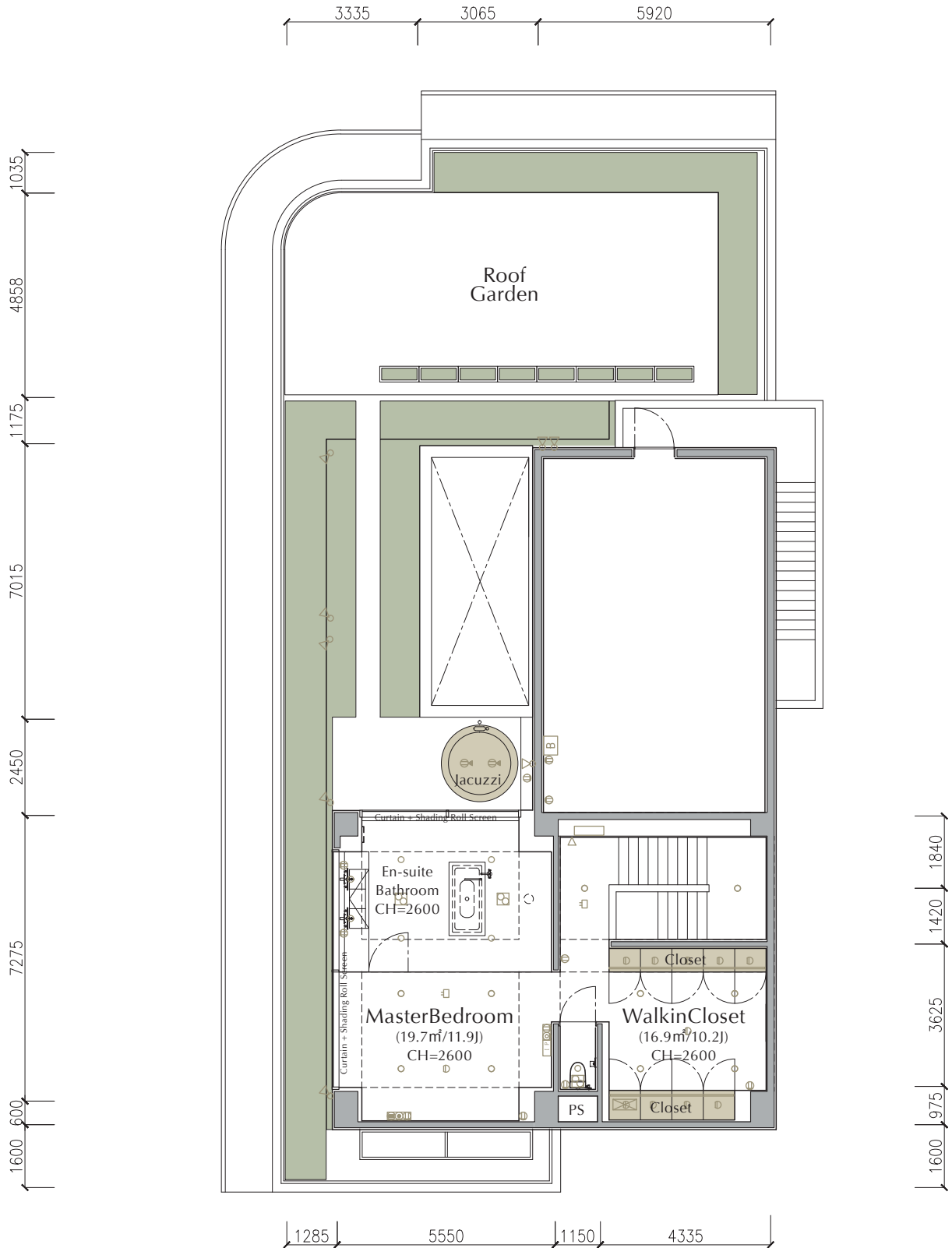
Lower Floor



Scale 1/150



Upper Floor



Due to potential changes in construction, the dimensions inside each units, partition wall position, storage size, tatami number display, ceiling height and equipment are subject to change. (As of October 1, 2018)

施工上の理由等により各住戸内の寸法、間仕切壁位置、収納部サイズ、畳数表示、天井高さ、設備機器配置に変更が生じる可能性があります。(2018.10.01現在)