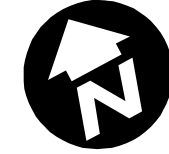
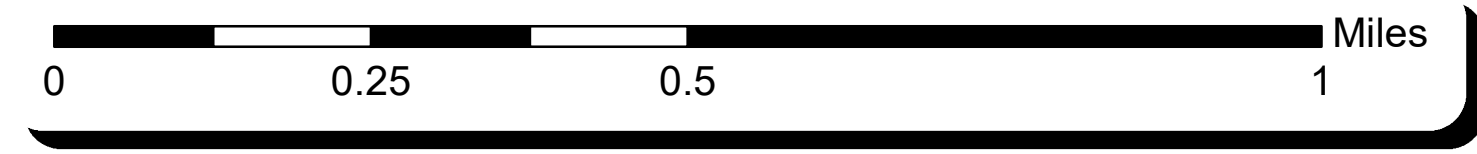


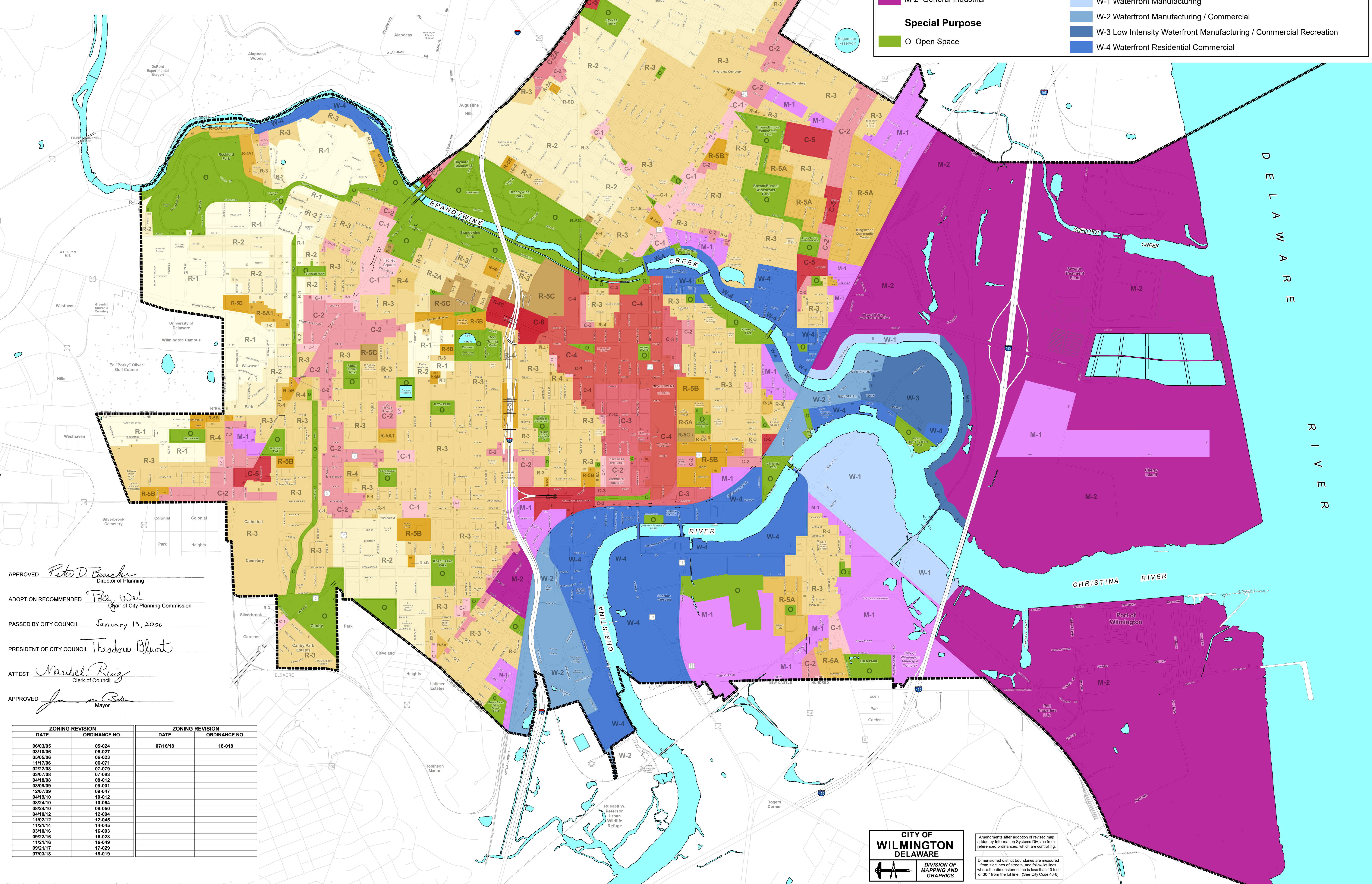


CITY OF WILMINGTON ZONING MAP

THIS MAP IS SUPPLEMENTED BY "SUPPLEMENTAL BUILDING ZONE MAP - FLOOD DISTRICTS AND HISTORIC DISTRICTS"



- | Commercial | | Residential | |
|------------------------------|---|-------------|--|
| | C-1 Neighborhood Shopping | | R-1 One-Family Detached Dwellings |
| | C-1-A Neighborhood Commercial | | R-2 One-Family Semi-Detached Dwellings |
| | C-2 Secondary Business Commercial Centers | | R-2-A One-Family Detached and Semi-detached Dwellings with Conversions |
| | C-2-A Secondary Office and Business Centers | | R-3 One-Family Row Houses |
| | C-3 Central Retail | | R-4 Row Houses with Conversions |
| | C-4 Central Office | | R-5-A Low Density Apartment Houses |
| | C-5 Heavy Commercial | | R-5-B Medium Density Apartment Houses |
| | C-6 Special Commercial | | R-5-C High Density Apartment Houses |
| Manufacturing and Industrial | | Waterfront | |
| | M-1 Light Manufacturing | | W-1 Waterfront Manufacturing |
| | M-2 General Industrial | | W-2 Waterfront Manufacturing / Commercial |
| Special Purpose | | | W-3 Low Intensity Waterfront Manufacturing / Commercial Recreation |
| | O Open Space | | W-4 Waterfront Residential Commercial |



APPROVED *Peter D. Buscher*
Director of Planning

ADOPTION RECOMMENDED *Polly Weil*
Chair of City Planning Commission

PASSED BY CITY COUNCIL *January 19, 2006*

PRESIDENT OF CITY COUNCIL *Theodore Blunt*

ATTEST *Maribel Ruiz*
Clerk of Council

APPROVED *Jan M. Saha*
Mayor

| ZONING REVISION | | ZONING REVISION | |
|-----------------|---------------|-----------------|---------------|
| DATE | ORDINANCE NO. | DATE | ORDINANCE NO. |
| 06/03/05 | 05-024 | 07/16/18 | 18-018 |
| 03/10/06 | 05-027 | | |
| 05/05/06 | 06-023 | | |
| 11/17/06 | 08-071 | | |
| 02/22/08 | 07-079 | | |
| 03/07/08 | 07-083 | | |
| 04/18/08 | 08-012 | | |
| 03/09/09 | 09-001 | | |
| 12/07/09 | 09-047 | | |
| 04/19/10 | 10-012 | | |
| 08/24/10 | 10-054 | | |
| 08/24/10 | 08-050 | | |
| 04/10/12 | 12-004 | | |
| 11/02/12 | 12-045 | | |
| 11/21/14 | 14-045 | | |
| 03/10/16 | 16-003 | | |
| 09/22/16 | 16-028 | | |
| 11/21/16 | 16-049 | | |
| 09/21/17 | 17-029 | | |
| 07/03/18 | 18-019 | | |

CITY OF WILMINGTON
DELAWARE

DIVISION OF MAPPING AND GRAPHICS

Amendments after adoption of revised map added by Information Systems Division from referenced ordinances, which are controlling.

Dimensioned district boundaries are measured from sidelines of streets and follow lot lines where the dimensioned line is less than 10 feet or 30' from the lot line. (See City Code 41-6)