

Icons and Symbols on the Twitter App

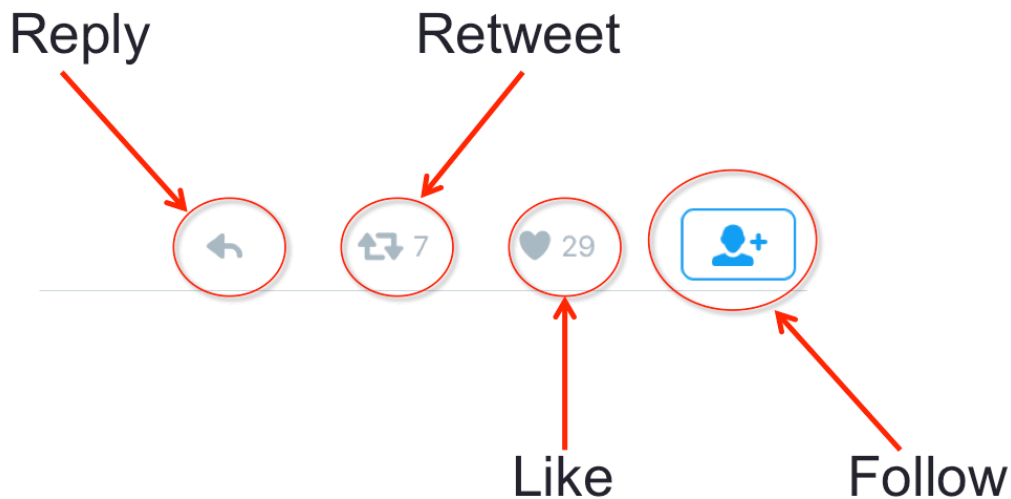
In this tutorial you will learn:

- Icons and symbols used on the Twitter app

Introduction

There are many icons and symbols on the Twitter app for your smartphone. The icons and symbols displayed in this tutorial originate from an iPhone, but they're pretty much like the icons on an Android phone—except for color. Knowing these icons and symbols will help you become a Twitter expert.

Basic Icons

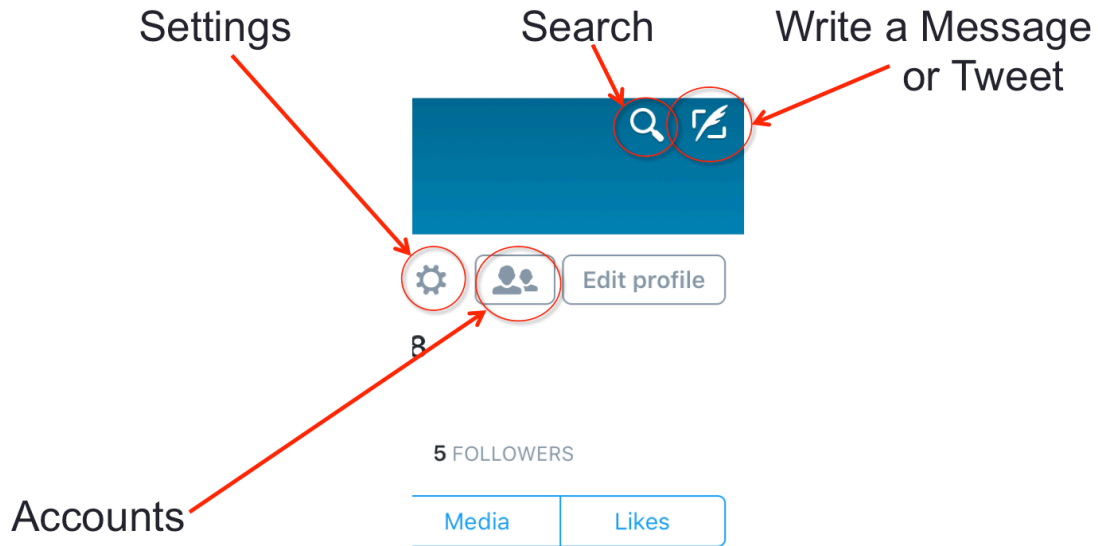


The icons reply, retweet, like, and follow normally show up under tweets.

- The backward arched arrow is the reply icon, use the icon to reply to another Twitter user or tweet.
- The box made out of two arrows is the retweet button. Click on this icon to retweet.
- The heart signifies the like icon. Use this icon to show appreciation for the given tweet.

- The person with a plus sign is the follow icon. Use this icon to follow a Twitter user.

Me Page Icons



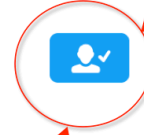
- Click on the settings icon that looks like a cog or gear to change your settings, view lists, look at drafts, find Twitter help, or sign out.
- Click the search icon to search Twitter for certain tweets or other users.
- To write a tweet or message, click on the icon that looks like a feathered pen.
- If you have more than one Twitter account, you can use the accounts icon that looks like two people to add more than one account to use on your Twitter App.

Following Icons

Follow Someone



Following



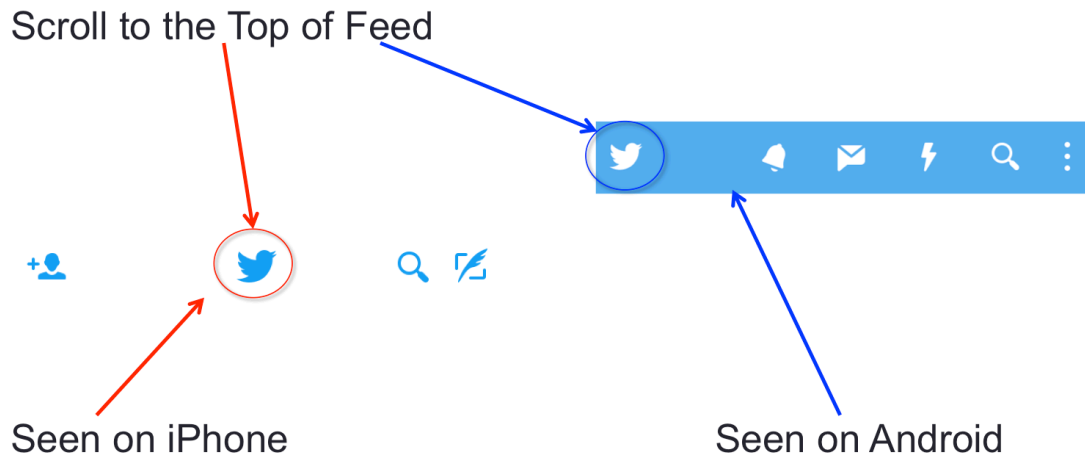
Click Here to Also Unfollow

These two icons appear very frequently in the twitter app.

- The icon with the person and the plus sign signifies that you can follow someone, while the check marked one indicates that you are already following this Twitter user.

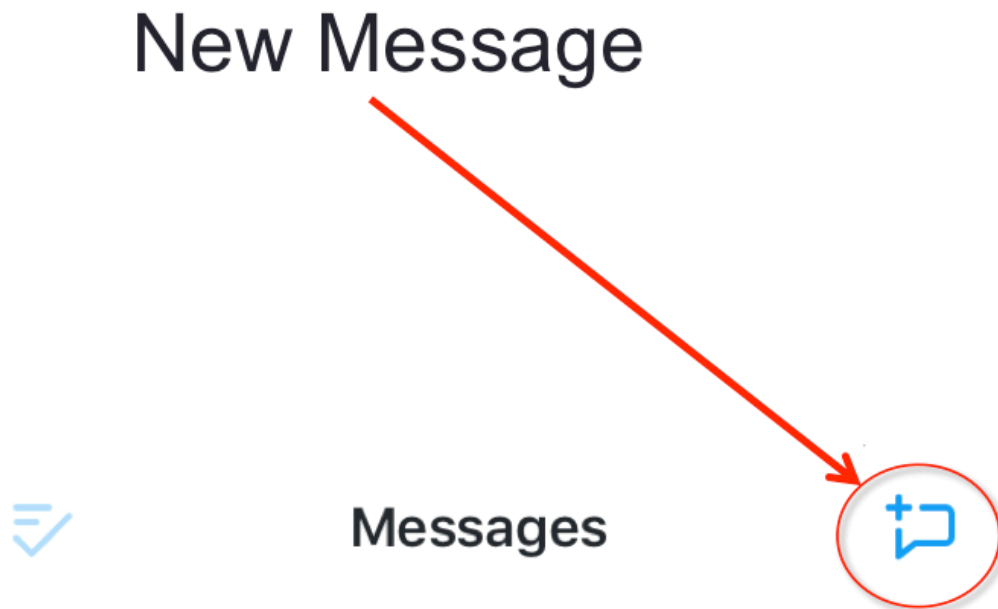
If you want to unfollow a person that you are already following, simply click on the blue check marked person. Twitter will ask you if you wish to unfollow this user, and you just need to click unfollow to do so.

The Twitter Bird Icon



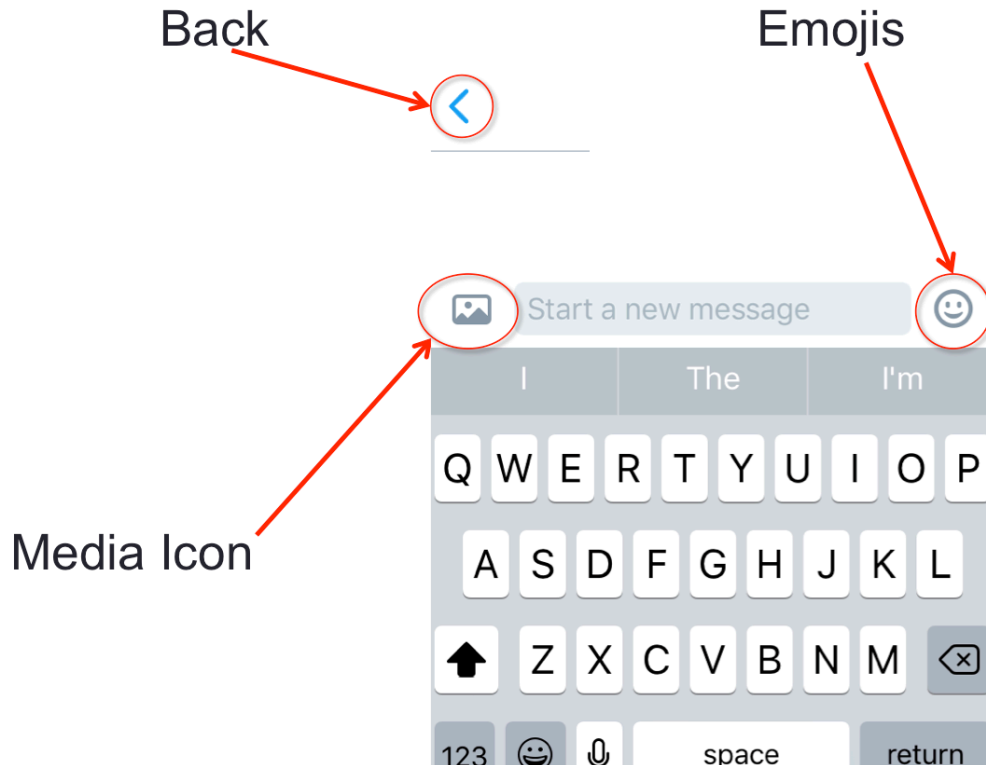
At the very top of your Home Page, you can see a twitter bird; if you click on this icon it will automatically scroll up to the top of your home feed for you.

Message Page Icons



After clicking your Messages Page, you can find an icon in the top right hand corner.

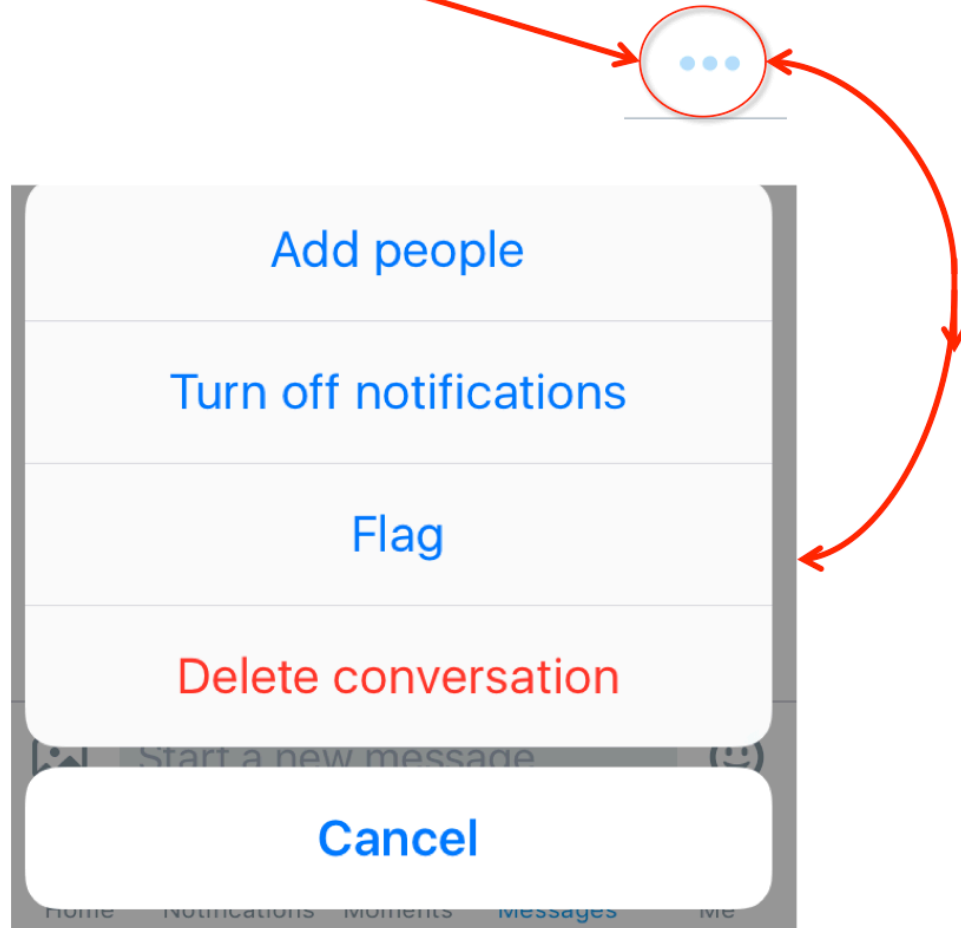
- This new message icon is a speech bubble with a plus sign in the upper left corner. Use the new messages icon to write a new message to other users.



Under your messages tab, you will find many different helpful icons.

- The backward arrow icon will lead you back to your messages and back to the previous Twitter page you were on.
- The icon that looks like two mountains and a sun is your media icon; you can use it to go into your devices photo gallery and choose a picture to use in your message.
- The smiley face is an icon that lets you pick emojis to add to your messages.

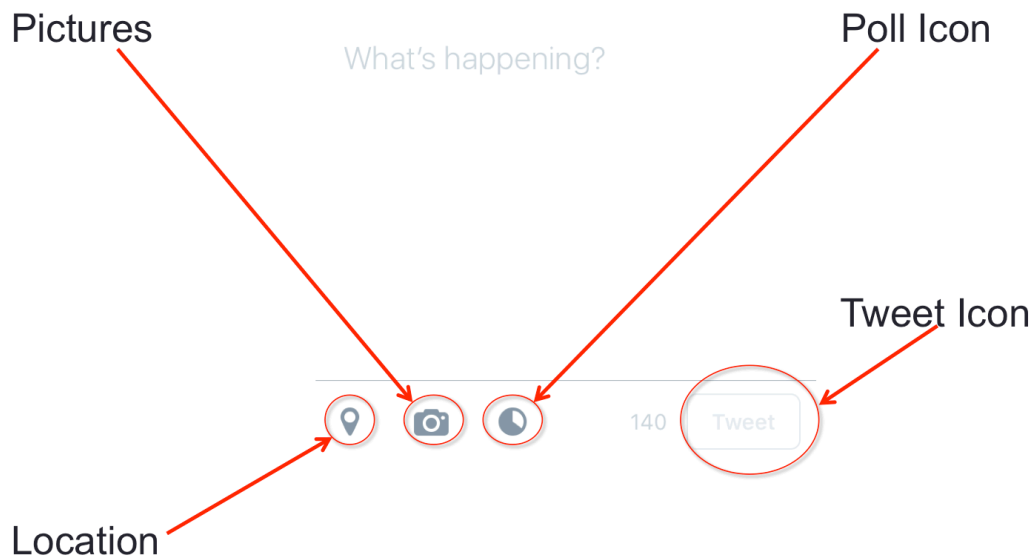
Extra Options



Here is another Message Page icon you should know.

- Click on the ellipses in the top right corner, if you want to access extra message options for the user's message you had just clicked on. The bottom image will appear, giving you extra options for what to do with the conversation. These extra options include: add people, turn off notifications, flag, delete conversation, and cancel.

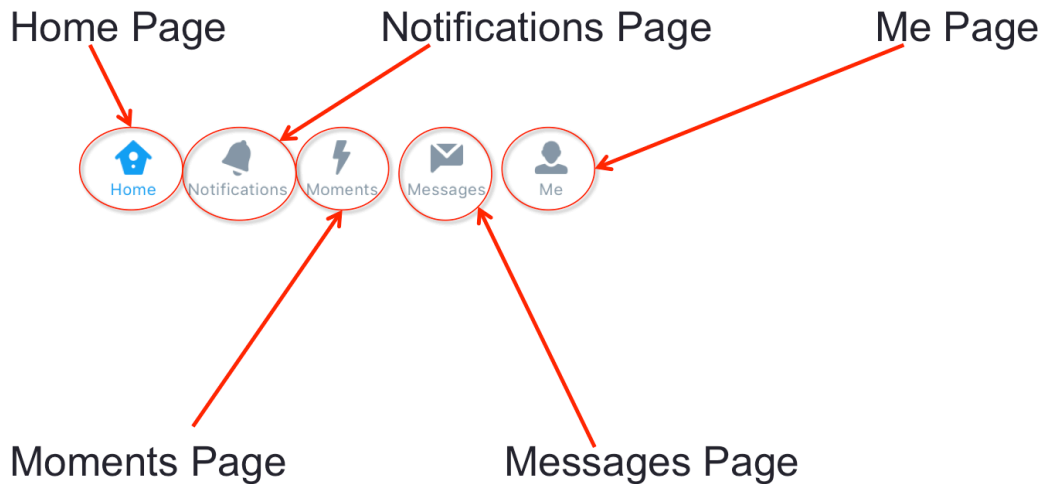
Tweet Icons



When you are going to write a Tweet, you have many different icons to pick from.

- The camera image can be used to scroll through your photos that you can post in your tweet.
- The upside down raindrop is the location icon, and you can use this icon to allow Twitter to use your location to show local content, improve recommendations, and more.
- The pie chart in the middle of the screen is your poll icon. This icon can be used to create a poll for your tweet. You only have the ability to write a minimum of two and a maximum of four different choices.
- There is an icon that is a box with the word "tweet" on it, click on this icon to post your tweet.

Page Icons



The icons displayed here can be seen on your iPhone, if you have an Android the icons look almost identical only they are a different color and do not have the words below them.

- To get to your Home Page, click on the icon that looks like a house.
- Your Notifications Page icon looks like a bell.
- To get to the Moments Page, click on the icon that looks like a lightning bolt.
- The speech bubble mixed with an envelope icon will lead you to your Messages Page.
- To get to your Me Page, click on the icon that looks like a person.