

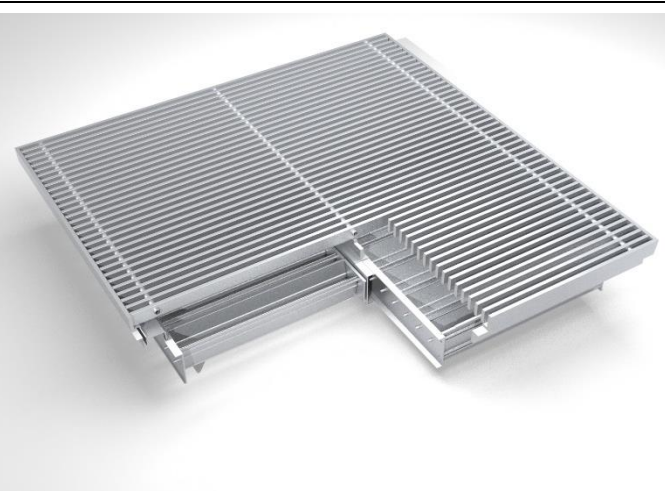
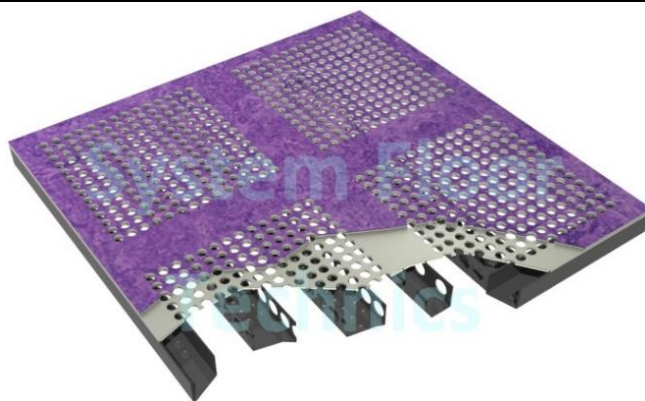
PERFORATED (VENTILATION) PANELS – TECHNICAL SPECIFICATIONS

Introduction

For both system floor BW792 and SB1973 floor panels can be carried out as perforated panel for the use of air conditioning systems. Depending on the demands of the equipment System Floor Technics is able to deliver the right ventilation panel for every situation.

Because every technical installation is different, System Floor Technics offers a wide range of ventilation panels. To adjust the airflow thru panels, they can be equipped with (stepless) adjustable volume controls.

The choice for a specific panel can be made on base of esthetical and/or technical needs. Panels can be suited with the same finish to the “normal” floor panels but it is also possible to choose for luxury alloy or high loadable industrial gratings.

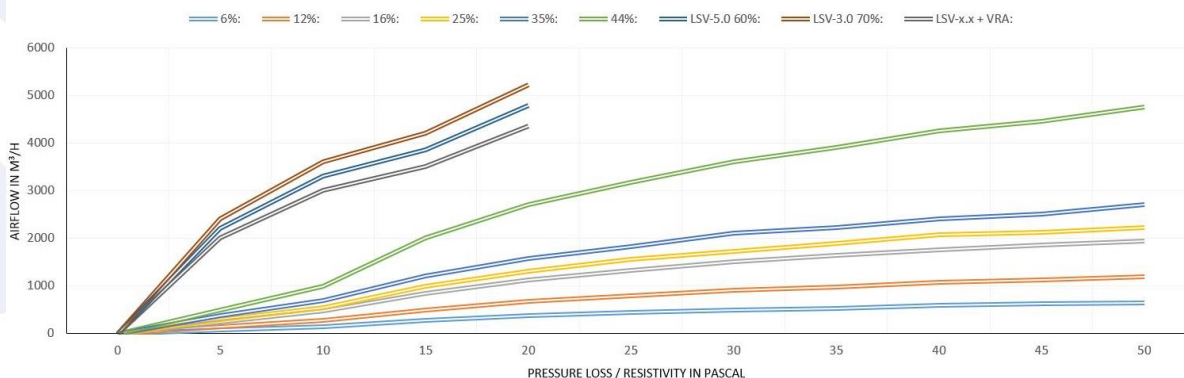


Materials

Depending on technical and/or esthetical needs panels can be carried out in different materials:

- High density chipboard (780 kg/m³) bottom alu foil 0,05 mm or steel plate 0,5 mm, pierced 12 mm, airflow 6%
- Powder coated steel ventilation panels made out of U-profiles, pierced 11 mm, airflow 12%
- Powder coated steel ventilation panels made out of U-profiles, pierced 11 mm, airflow 16%
- Powder coated steel ventilation panels made out of U-profiles, pierced 12,5 mm, airflow 25%
- Powder coated steel ventilation panels made out of U-profiles, pierced 12,5 mm, airflow 35%
- Powder coated steel ventilation panels made out of U-profiles, pierced 12,5 mm, airflow 44%
- Anodized alu grating, rod thickness 3/5 mm, airflow 70/60%
- Galvanized steel industrial grating, mesh 30 x 30 mm, airflow 80%

FLOW CHART VENTILATION PANELS



In the diagram above the airflow rates of our ventilation panels are indicated. Your installer and/or ICT company can indicate exactly which airflow rate is required. NOTE: When a raised access floor is equipped with ventilation panels without taking precautions, the fire resistance classification (F30, F60) does no longer apply. This is due to an open connection between the plenum (under raised floor) and the space above the raised floor and thereby the requirement for fire: oxygen.



Finish

Ventilation panels made out of chipboard and steel can be carried out with equal finish to the other “normal” floor panels. Aforementioned panels can sometimes even be equipped with carpet, although carpet reduces the airflow of panels.

Subject to changes

system floor technics
 advice, delivery and installation of raised access floors

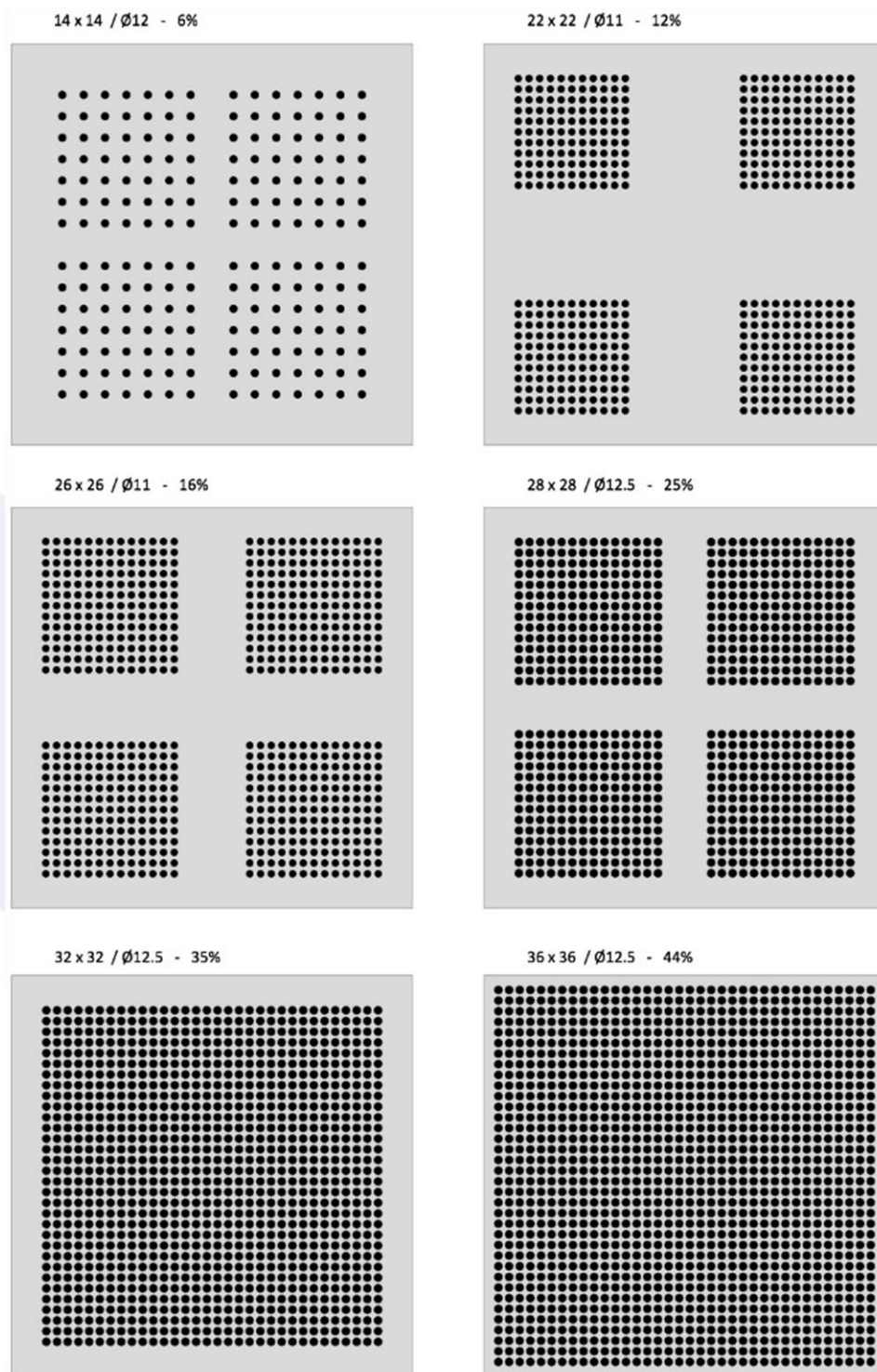
Voltastraat 82, Doetinchem The Netherlands ■ P.O. Box 415 7000 AK Doetinchem The Netherlands ■ **T +31 (0)314 32 75 75**
 F +31 (0)314 36 32 20 ■ E info@systemfloortechnics.nl ■ I www.systemfloortechnics.nl ■ Payment details NL57 INGB 0693 1193 81
 G-nr. NL68 INGB 0996 0481 46 ■ BIC INGBNL2A ■ Commercial register 09056564 ■ VAT registration number NL008810266B01

PERFORATED (VENTILATION) PANELS – TECHNICAL SPECIFICATIONS

Below you can find our “standard” chipboard and steel ventilation panels.

Please contact us for further information: call +31314-32 75 75 or make an appointment.

Specifications of “standard” chipboard and steel ventilation panels:



Subject to changes

system floor technics
 advice, delivery and installation of raised access floors

Voltastraat 82, Doetinchem The Netherlands ■ P.O. Box 415 7000 AK Doetinchem The Netherlands ■ **T +31 (0)314 32 75 75**
 F +31 (0)314 36 32 20 ■ E info@systemfloortechnics.nl ■ I www.systemfloortechnics.nl ■ Payment details NL57 INGB 0693 1193 81
 G-nr. NL68 INGB 0996 0481 46 ■ BIC INGBNL2A ■ Commercial register 09056564 ■ VAT registration number NL008810266B01