

PLAN 2695

Total Living Area: 2695 sq. ft.

Beds: 4
Full Baths: 2
Half Baths: 1

Garages: 2
Stories: 2



BROHNHOMES.COM



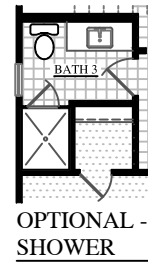
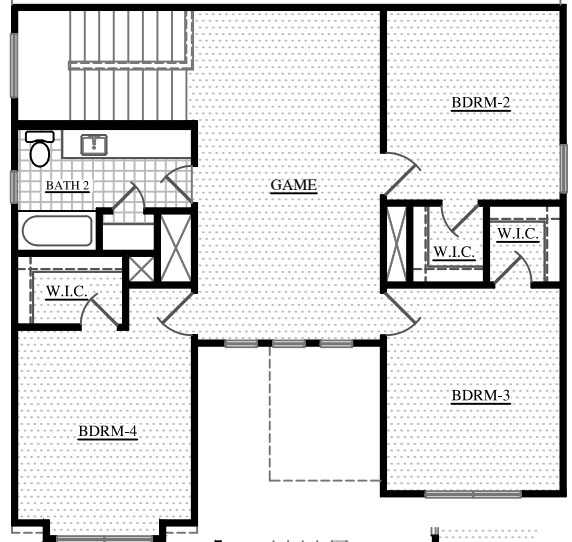
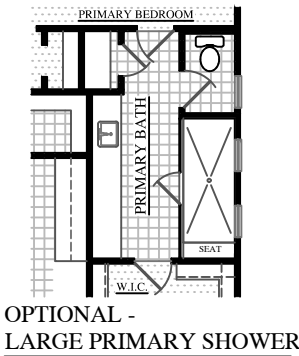
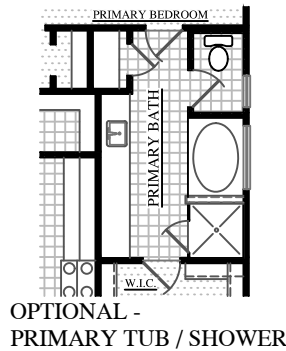
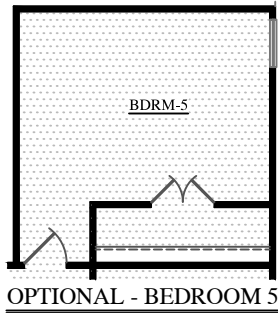
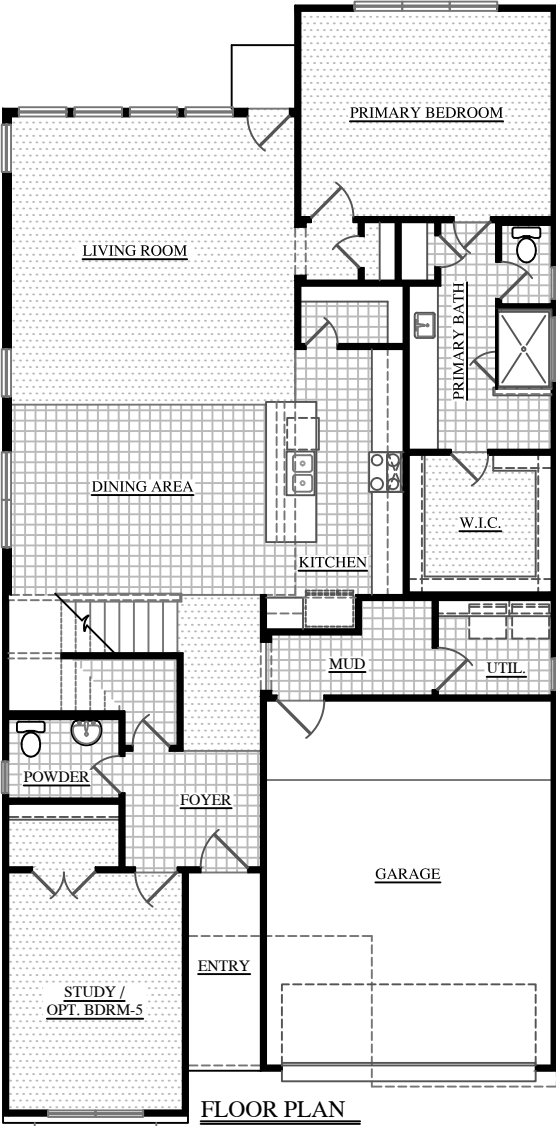
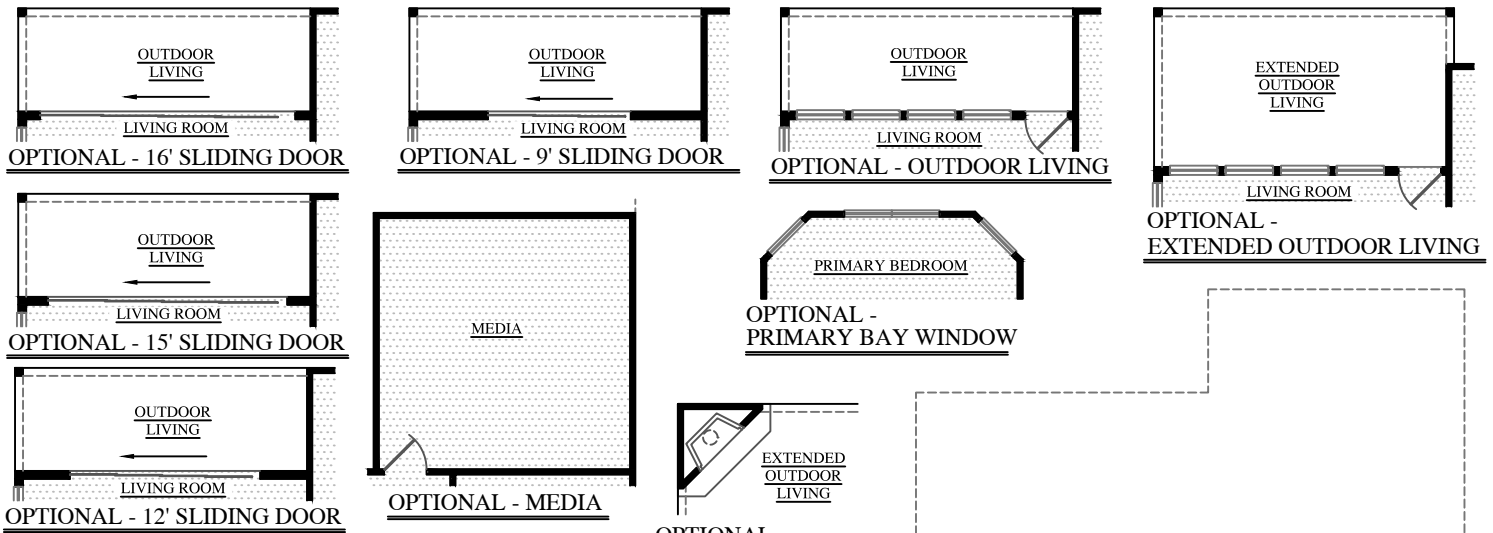
Front Elevation "A"



Front Elevation "B"

Clayton Properties Group, Inc. Formerly known and Qualified to do business in Texas as CMH Parks Inc. DBA Brohn Homes reserves the right to make changes to pricing, floor plans, specifications, features, dimensions, elevations, and incentives without prior notice. Stated dimensions and square footages are approximate and should not be used as representation of the home's precise or actual size. Copyright © 2014 Clayton Properties Group, Inc. Formerly known and Qualified to do business in Texas as CMH Parks Inc. DBA Brohn Homes.





PLAN 2695

Total Heated (A) - 2,695 sq. ft.
 Total Heated (B) - 2,675 sq. ft.

