

PLAN 2311

Total Living Area: 2311 sq. ft.

Beds: 3
Full Baths: 2
Half Baths: 1

Garages: 2
Stories: 2



BROHNHOMES.COM



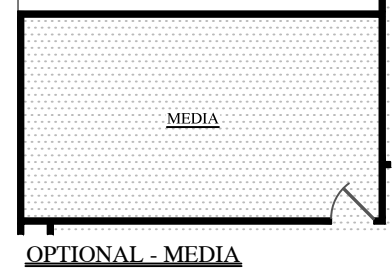
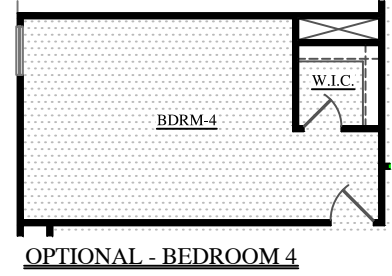
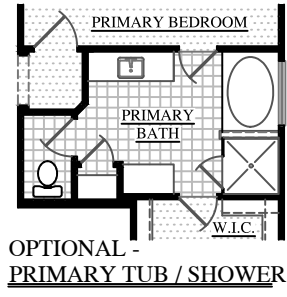
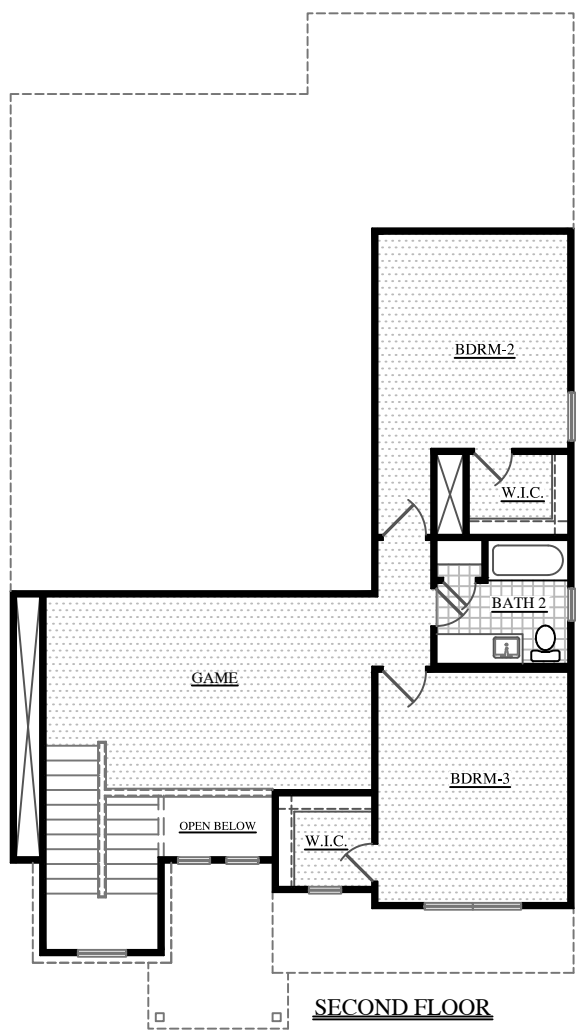
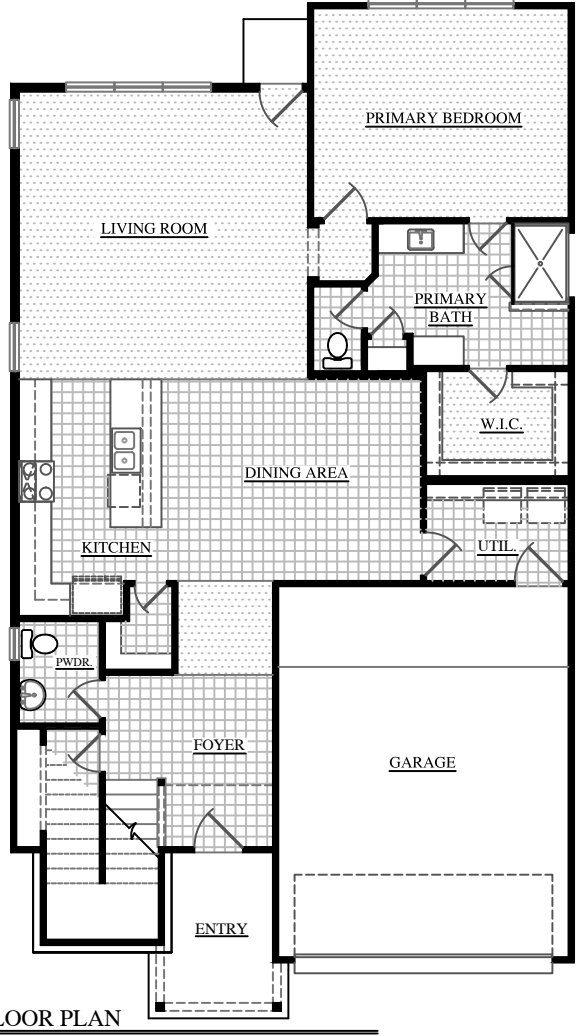
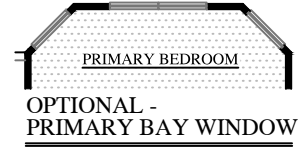
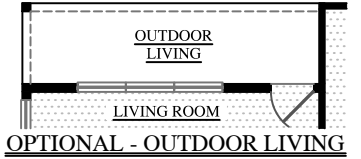
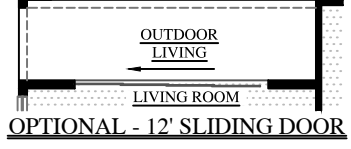
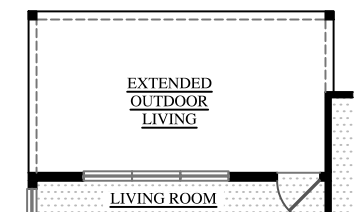
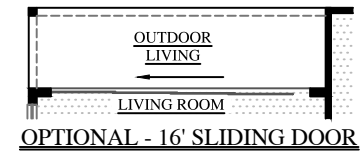
Front Elevation "A"



Front Elevation "B"

Clayton Properties Group, Inc. Formerly known and Qualified to do business in Texas as CMH Parks Inc. DBA Brohn Homes reserves the right to make changes to pricing, floor plans, specifications, features, dimensions, elevations, and incentives without prior notice. Stated dimensions and square footages are approximate and should not be used as representation of the home's precise or actual size. Copyright © 2014 Clayton Properties Group, Inc. Formerly known and Qualified to do business in Texas as CMH Parks Inc. DBA Brohn Homes.





TILE
CARPET

PLAN 2311

Total Heated (A) - 2,311 sq. ft.
Total Heated (B) - 2,311 sq. ft.

