



Rebate Days!

Get a \$25 Gift Card!
(with a \$50 purchase of qualifying
BIC® Writing Products)

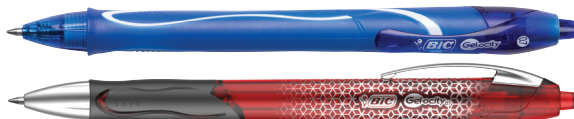
Highlighters



- Super bright fluorescent ink
- Chisel tip for broad highlighting or fine underlining
- Won't dry out if left uncapped for up to 8 hours
- ACMI approved, non-toxic



Gel Pens



Gel-ocity® Quick Dry Gel Pen

- Quick drying ink protects against smearing
- Comfortable full grip barrel
- 0.7mm medium point

Gel-ocity® Ultra Gel Pen

- Water, fade and fraud resistant
- Smooth ink flow with bold, vivid colors
- Comfortable grip
- 0.7mm medium point

Permanent Markers



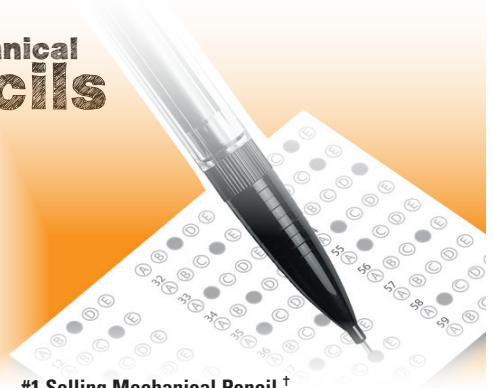
Intensity® Fine & Ultra-Fine

- Won't Dry Out*
- Low odor
- Non-slip grip
- Long-lasting, bold color
- ACMI approved, non-toxic

Intensity® Metal Pro™

- Ultra-fade & Water Resistant
- Marks on most surfaces (including wood, glass, metal, plastic)
- Quick drying, jet black ink

Mechanical Pencils



#1 Selling Mechanical Pencil †

Always ready, sharp and accurate, BIC® #2 Mechanical Pencils are the smart choice. Perfect for Standardized Tests.

For mail-in submissions only, mail to:

BIC® Stationery Dealer Rebate - ESS
PO Box 7770
Melville, NY 11775-7770

* When cap is left off for 2 weeks (classic colors: Blue, Black, Red & Green)

† Source: The NPD Group/Retail Tracking Service/U.S. Actual Unit Sales/Jan-Dec 2018

To receive your gift card:

Go to <http://bicwritingrebate.com/ESS> complete the online submission form and upload your original dated invoice with qualifying BIC Writing Products circled, listing a minimum of \$50 for each \$25 gift card requested. The invoice must clearly show: 1) Purchase date from July 1, 2020 – December 31, 2020; 2) At least \$50 of any BIC Writing Products purchased through an eligible reseller in a single transaction (before tax). If your invoice is too long to fit in one image, you may upload multiple images.

Or: Mail this original, fully completed redemption certificate with original dated invoice or packing slip with qualifying BIC Writing Products circled, listing a minimum of \$50 for each \$25 gift card requested to the address at right.

Receive: A \$25 Gift Card (for each \$50 spent, limit 4) by mail or email (Gift Card terms & conditions will apply).

Limited Time Offer! -

Valid only from July 1 - December 31, 2020

HIGHLIGHTERS

BIC® BRITE LINER® HIGHLIGHTER

| | |
|---------------|--|
| BICBL11YW | BIC® Brite Liner® Highlighter, Pocket, Chisel Tip, Yellow, DZ |
| BICBL11BE | BIC® Brite Liner® Highlighter, Pocket, Chisel Tip, Blue, DZ |
| BICBL11GN | BIC® Brite Liner® Highlighter, Pocket, Chisel Tip, Green, DZ |
| BICBL11OE | BIC® Brite Liner® Highlighter, Pocket, Chisel Tip, Orange, DZ |
| BICBL11PK | BIC® Brite Liner® Highlighter, Pocket, Chisel Tip, Pink, DZ |
| BICBL200YW | BIC® Brite Liner® Highlighter, Pocket, Chisel Tip, Yellow, 200 CT |
| BICBL241AST | BIC® Brite Liner® Highlighter, Pocket, Chisel Tip, Assorted, 24 CT |
| BICBL241YW | BIC® Brite Liner® Highlighter, Pocket, Chisel Tip, Yellow, 24 CT |
| BICBLP51WASST | BIC® Brite Liner® Highlighter, Pocket, Chisel Tip, Assorted, 5 CT |
| BICBLMG11YW | BIC® Brite Liner® Highlighter, Tank, Chisel Tip, Yellow, DZ |
| BICBLMG11AST | BIC® Brite Liner® Highlighter, Tank, Chisel Tip, Assorted, DZ |
| BICBLMG41ASST | BIC® Brite Liner® Highlighter, Tank, Chisel Tip, Assorted, 4 CT |
| BICBLMG36-YEL | BIC® Brite Liner® Highlighter, Tank, Chisel Tip, Yellow, 36 CT |
| BICBLMG36-AST | BIC® Brite Liner® Highlighter, Tank, Chisel Tip, Assorted, 36 CT |

BIC® BRITE LINER® GRIP HIGHLIGHTER

| | |
|---------------|--|
| BICGBL11YW | BIC® Brite Liner® Grip Highlighter, Pocket, Chisel Tip, Yellow, DZ |
| BICGBLP51ASST | BIC® Brite Liner® Grip Highlighter, Pocket, Chisel Tip, Assorted, 5 CT |

BIC® BRITE LINER® RETRACTABLE HIGHLIGHTER

| | |
|---------------|---|
| BICBLR11YW | BIC® Brite Liner® Retractable Highlighter, Pocket, Chisel Tip, Yellow, DZ |
| BICBLRP51ASST | BIC® Brite Liner® Retractable Highlighter, Pocket, Chisel Tip, Assorted, 5 CT |

DRY ERASE MARKERS

BIC® INTENSITY® BOLD DRY ERASE MARKER

| | |
|---------------|---|
| BICDEC11BK | BIC® Intensity® Bold Dry Erase Marker, Tank, Chisel Tip, Black, DZ |
| BICDEC11BE | BIC® Intensity® Bold Dry Erase Marker, Tank, Chisel Tip, Blue, DZ |
| BICDEC11GN | BIC® Intensity® Bold Dry Erase Marker, Tank, Chisel Tip, Green, DZ |
| BICDEC11RD | BIC® Intensity® Bold Dry Erase Marker, Tank, Chisel Tip, Red, DZ |
| BICDECP41ASST | BIC® Intensity® Bold Dry Erase Marker, Tank, Chisel Tip, Assorted, 4 CT |
| BICDEC11BK | BIC® Intensity® Bold Dry Erase Marker, Pocket, Fine Point, Black, DZ |
| BICDECF41ASST | BIC® Intensity® Bold Dry Erase Marker, Pocket, Fine Point, Assorted, 4 CT |

BIC® INTENSITY® LOW ODOR DRY ERASE MARKER

| | |
|----------------|---|
| BICGDE11BK | BIC® Intensity® Low Odor Dry Erase Marker, Pocket, Fine Point, Black, DZ |
| BICGDE11BE | BIC® Intensity® Low Odor Dry Erase Marker, Pocket, Fine Point, Blue, DZ |
| BICGDE11GN | BIC® Intensity® Low Odor Dry Erase Marker, Pocket, Fine Point, Green, DZ |
| BICGDE11RD | BIC® Intensity® Low Odor Dry Erase Marker, Pocket, Fine Point, Red, DZ |
| BICGDEP41ASST | BIC® Intensity® Low Odor Dry Erase Marker, Pocket, Fine Point, Assorted, 4 CT |
| BICGDE30AST | BIC® Intensity® Low Odor Dry Erase Marker, Pocket, Fine Point, Assorted, 30 CT |
| BICGDE175BK | BIC® Intensity® Low Odor Dry Erase Marker, Pocket, Fine Point, Black, 175 CT |
| BICGDEM11BK | BIC® Intensity® Low Odor Dry Erase Marker, Tank, XL Bullet Tip, Black, DZ |
| BICGDEM11BE | BIC® Intensity® Low Odor Dry Erase Marker, Tank, XL Bullet Tip, Blue, DZ |
| BICGDEM11GN | BIC® Intensity® Low Odor Dry Erase Marker, Tank, XL Bullet Tip, Green, DZ |
| BICGDEM11RD | BIC® Intensity® Low Odor Dry Erase Marker, Tank, XL Bullet Tip, Red, DZ |
| BICGDEMP41ASST | BIC® Intensity® Low Odor Dry Erase Marker, Tank, XL Bullet Tip, Assorted, 4 CT |
| BICGDEMP36-AST | BIC® Intensity® Low Odor Dry Erase Marker, Tank, XL Bullet Tip, Assorted, 36 CT |

BIC® INTENSITY® ADVANCED DRY ERASE MARKER

| | |
|-----------------|--|
| BICGELI11BK | BIC® Intensity® Advanced Dry Erase Marker, Tank, Chisel Tip, Black, DZ |
| BICGELI11BE | BIC® Intensity® Advanced Dry Erase Marker, Tank, Chisel Tip, Blue, DZ |
| BICGELI11GN | BIC® Intensity® Advanced Dry Erase Marker, Tank, Chisel Tip, Green, DZ |
| BICGELI11RD | BIC® Intensity® Advanced Dry Erase Marker, Tank, Chisel Tip, Red, DZ |
| BICGELIP41AST | BIC® Intensity® Advanced Dry Erase Marker, Tank, Chisel Tip, Assorted, 4 CT |
| BICGELITP121AST | BIC® Intensity® Advanced Dry Erase Marker, Tank, Chisel Tip, Assorted, 12 CT |
| BICGELITP241AST | BIC® Intensity® Advanced Dry Erase Marker, Tank, Chisel Tip, Assorted, 24 CT |
| BICGELITP241BK | BIC® Intensity® Advanced Dry Erase Marker, Tank, Chisel Tip, Black, 24 CT |
| BICGELIPP121AST | BIC® Intensity® Advanced Dry Erase Marker, Pocket, Fine Point, Assorted, 12 CT |

PERMANENT MARKERS

BIC® INTENSITY® PERMANENT MARKER

| | |
|----------------|---|
| BICGPM11BK | BIC® Intensity® Permanent Marker, Fine Point, Black, DZ |
| BICGPM11BE | BIC® Intensity® Permanent Marker, Fine Point, Blue, DZ |
| BICGPM11RD | BIC® Intensity® Permanent Marker, Fine Point, Red, DZ |
| BICGPM241BK | BIC® Intensity® Permanent Marker, Fine Point, Black, 24 CT |
| BICGPM200BK | BIC® Intensity® Permanent Marker, Fine Point, Black, 200 CT |
| BICGPMAP12ASST | BIC® Intensity® Permanent Marker, Fine Point, Fashion Assorted, 12 CT |

PERMANENT MARKERS CONTINUED

BIC® INTENSITY® PERMANENT MARKER

| | |
|----------------|---|
| BICGXMP361ASST | BIC® Intensity® Permanent Marker, Fine Point, Fashion Assorted, 36 CT |
| BICGPM11BK | BIC® Intensity® Permanent Marker, Tank, Chisel Tip, Black, DZ |
| BICGPM11-AST | BIC® Intensity® Permanent Marker, Tank, Chisel Tip, Assorted, DZ |
| BICGPM36-BK | BIC® Intensity® Permanent Marker, Tank, Chisel Tip, Black, 36 CT |
| BICGPM36-AST | BIC® Intensity® Permanent Marker, Tank, Chisel Tip, Assorted, 36 CT |
| BICGPMU11BK | BIC® Intensity® Permanent Marker, Ultra Fine Point, Black, DZ |
| BICGPMU11BE | BIC® Intensity® Permanent Marker, Ultra Fine Point, Blue, DZ |
| BICGPMU11RD | BIC® Intensity® Permanent Marker, Ultra Fine Point, Red, DZ |
| BICGPMUP12ASST | BIC® Intensity® Permanent Marker, Ultra Fine Point, Fashion Assorted, 12 CT |

BIC® INTENSITY® RETRACTABLE PERMANENT MARKER

| | |
|------------|---|
| BICPMR11BK | BIC® Intensity® Retractable Permanent Marker, Fine Point, Black, DZ |
|------------|---|

BIC® INTENSITY® METAL PRO™ PERMANENT MARKER

| | |
|--------------|--|
| BICPMIPK11BK | BIC® Intensity® Metal Pro™ Permanent Marker, Pocket, Black, DZ |
| BICPMIPJ11BK | BIC® Intensity® Metal Pro™ XL Permanent Marker, Jumbo, Black, 1 EA |

PENCILS AND MECHANICAL PENCILS

BIC® PENCIL MECHANICAL PENCILS

| | |
|---------------|--|
| BICMP11 | BIC® Pencil Xtra Smooth, 0.7mm, DZ |
| BICMP48BK | BIC® Pencil Xtra Smooth, 0.7mm, 48 CT |
| BICMP320BK | BIC® Pencil Xtra Smooth, 0.7mm, 320 CT |
| BICMPFG11 | BIC® Pencil Xtra Comfort, Grip, 0.5mm, DZ |
| BICMPG11 | BIC® Pencil Xtra Comfort, Grip, 0.7mm, DZ |
| BICMPG36BK | BIC® Pencil Xtra Comfort, Grip, 0.7mm, 36 CT |
| BICMPF11 | BIC® Pencil Xtra Precision, Clear Barrels, 0.5mm, DZ |
| BICMPLMFP241 | BIC® Pencil Xtra Precision, Metallic Barrels, 0.5mm, 24 CT |
| BICMPLP241 | BIC® Pencil Xtra Sparkle, 0.7mm, 24 CT |
| BICMPLWS11BLK | BIC® Pencil Xtra Strong, Yellow Barrels, 0.9mm, DZ |
| BICMPLWP241 | BIC® Pencil Xtra Strong, Colorful Barrels, 0.9mm, 24 CT |

BIC® VELOCITY® ORIGINAL MECHANICAL PENCIL

| | |
|------------|---|
| BICMV511BK | BIC® Velocity® Original, 0.5mm, DZ |
| BICMV711BK | BIC® Velocity® Original, Blue Barrel, 0.7mm, DZ |
| BICMV11BK | BIC® Velocity® Original, 0.9mm, DZ |

BIC® VELOCITY® MAX MECHANICAL PENCIL

| | |
|---------------|---------------------------------|
| BICMPMX5P21 | BIC® Velocity® Max, 0.5mm, 2 CT |
| BICMPMX5P51 | BIC® Velocity® Max, 0.5mm, 5 CT |
| BICMPMX7P21BK | BIC® Velocity® Max, 0.7mm, 2 CT |
| BICMPMX7P51 | BIC® Velocity® Max, 0.7mm, 5 CT |
| BICMPMX9P21 | BIC® Velocity® Max, 0.9mm, 2 CT |

BIC® VELOCITY® SIDE CLIC™ MECHANICAL PENCIL

| | |
|--------------|--|
| BICMPFSC11BK | BIC® Velocity® Side Clic™ Mechanical Pencil, 0.5mm, DZ |
| BICMPSC11BK | BIC® Velocity® Side Clic™ Mechanical Pencil, 0.7mm, DZ |

BIC® EVOLUTION® GRAPHITE PENCIL

| | |
|-------------|---|
| BICPGEBP241 | BIC® Evolution® #2 Pencil, Grey Barrel, 24 CT |
| BICPGEYP241 | BIC® Evolution® #2 Pencil, Yellow Barrel, 24 CT |

GEL PENS

BIC® GEL-OCITY® ORIGINAL GEL PEN

| | |
|---------------|--|
| BICRLC11BK | BIC® Gel-ocity® Original, Medium Point (0.7mm), Black, DZ |
| BICRLC11BE | BIC® Gel-ocity® Original, Medium Point (0.7mm), Blue, DZ |
| BICRLC241BK | BIC® Gel-ocity® Original, Medium Point (0.7mm), Black, 24 CT |
| BICRLCAP21AST | BIC® Gel-ocity® Original, Medium Point (0.7mm), Fashion Assorted, 2 CT |

BIC® GEL-OCITY® QUICK DRY GEL PEN

| | |
|-----------------|---|
| BICRGLCG11BK | BIC® Gel-ocity® Quick Dry, Medium Point (0.7mm), Black, DZ |
| BICRGLCG11BE | BIC® Gel-ocity® Quick Dry, Medium Point (0.7mm), Blue, DZ |
| BICRGLCG11AST | BIC® Gel-ocity® Quick Dry, Medium Point (0.7mm), Assorted, DZ |
| BICRGLCGA11AST | BIC® Gel-ocity® Quick Dry, Medium Point (0.7mm), Fashion Assorted, DZ |
| BICRGLCGAP81AST | BIC® Gel-ocity® Quick Dry, Medium Point (0.7mm), Fashion Assorted, 8 CT |

BIC® GEL-OCITY® ULTRA PEN

| | |
|-------------|---|
| BICRGU11BK | BIC® Gel-ocity® Ultra, Medium Point (0.7mm), Black, DZ |
| BICRGU11BE | BIC® Gel-ocity® Ultra, Medium Point (0.7mm), Blue, DZ |
| BICRGU11AST | BIC® Gel-ocity® Ultra, Medium Point (0.7mm), Assorted, DZ |

REDEMPTION CERTIFICATE

Please Print Clearly. Proper delivery depends on complete address. Fields with an * are required.

| | | | |
|--|--|------------|-------|
| _____ | | _____ | |
| *First Name | | *Last Name | |
| _____ | | _____ | |
| *Business Name/Department | | *Email | |
| _____ | | _____ | |
| *Business Street Address | | | |
| _____ | | _____ | |
| *City | | *State | *Zip |
| _____ | | _____ | _____ |
| *Office supply Dealer Name (where you purchased) _____ | | | |

Terms: Offer expires December 31, 2020. Requests must be postmarked or received online by January 4, 2021 received by January 13, 2021. Reproductions of certificate, invoices or packing slips are not valid. Invalid or multiple requests will not be returned or honored. Please allow 8-10 weeks for delivery. Limit four (4) rebate requests per company, per department, per address.

No Post Office Boxes allowed, only street or rural route addresses are acceptable. Hand print. Incomplete or illegible certificates will be denied. No mechanical reproductions or name and address labels accepted. BIC is not responsible for late, lost, misdirected, mutilated or postage due claims. Offer valid only in the U.S. and D.C. Invalid or multiple requests will not be returned or honored. Fraudulent submission could result in Federal prosecution under the U.S. Mail Fraud Statutes (18 United States Code, Sections 1341 and 1342). Not responsible for lost or misdirected mail. Void where prohibited, taxed or restricted by law. Consumer pays sales tax. All redemption certificates will be held and used in accordance with the Terms and Conditions of this Rebate Offer and BIC's Privacy Policy located at www.shopbic.com. For questions about your rebate email BICDealerRebate@dja.com.

By checking here I agree to receive mail and/or email communications from BIC