

# PLAN 2418

Total Living Area: 2418 sq. ft.

Beds: 3  
Full Baths: 2  
Half Baths: 1

Garages: 2  
Stories: 2



[BROHNHOMES.COM](http://BROHNHOMES.COM)



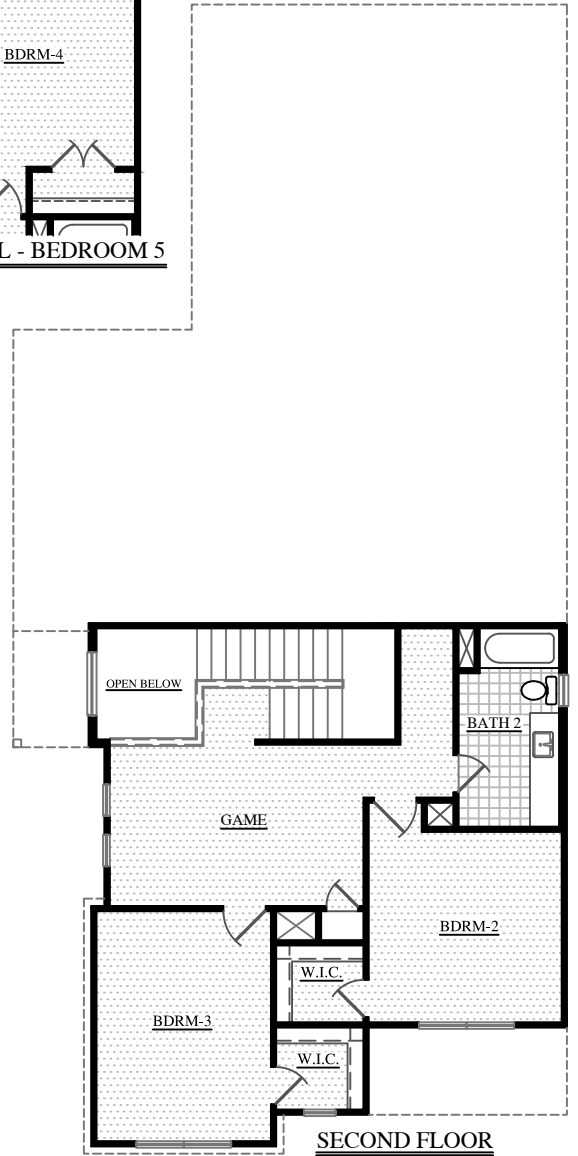
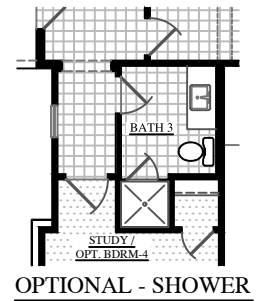
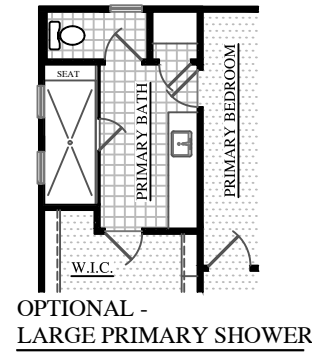
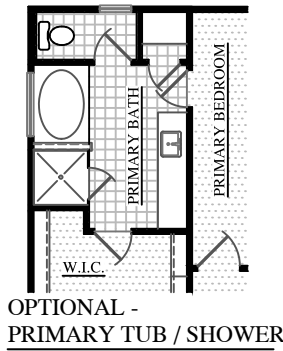
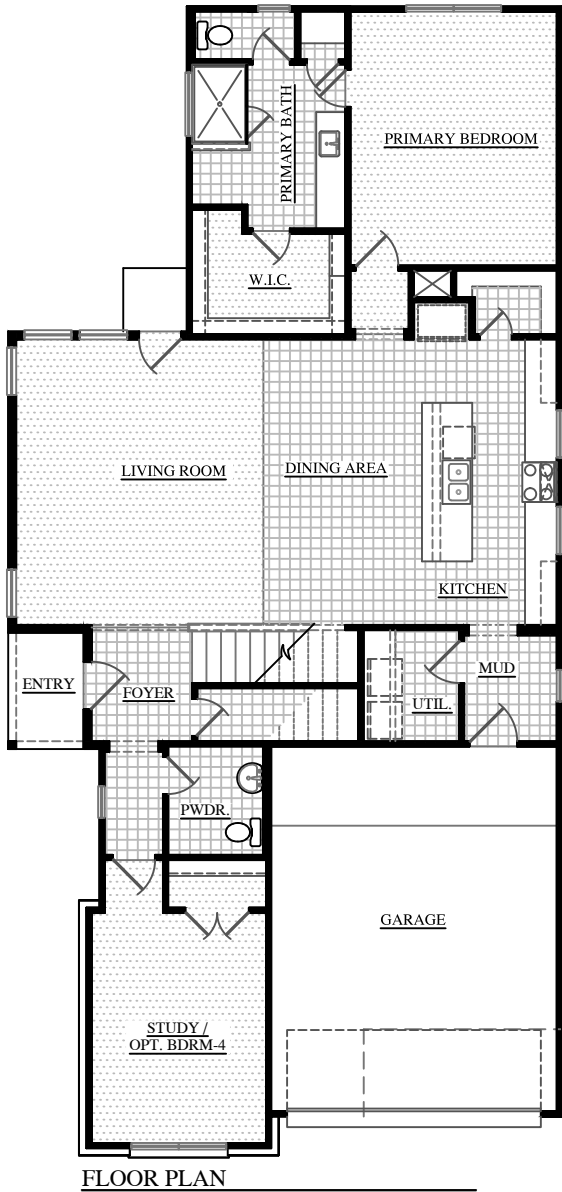
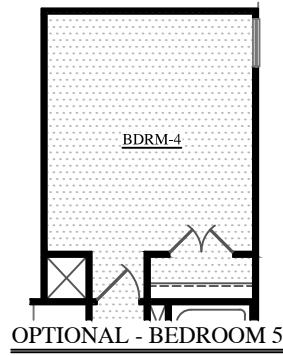
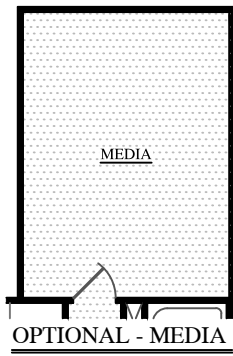
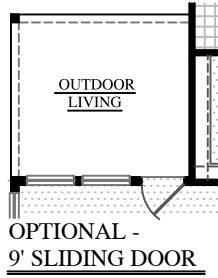
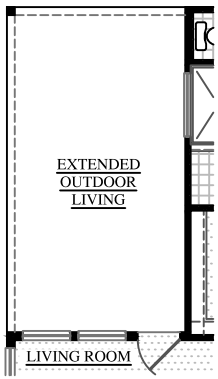
Front Elevation "A"



Front Elevation "B"

Clayton Properties Group, Inc. Formerly known and Qualified to do business in Texas as CMH Parks Inc. DBA Brohn Homes reserves the right to make changes to pricing, floor plans, specifications, features, dimensions, elevations, and incentives without prior notice. Stated dimensions and square footages are approximate and should not be used as representation of the home's precise or actual size. Copyright © 2014 Clayton Properties Group, Inc. Formerly known and Qualified to do business in Texas as CMH Parks Inc. DBA Brohn Homes.





-  TILE
-  CARPET

# PLAN 2418

Total Heated (A) - 2,418 sq. ft.  
 Total Heated (B) - 2,424 sq. ft.

