

Local library starts with deposit of 150 books

Twenty-three years ago, three enterprising women, realizing the need for library books to supply the school children and acting as the library committee of the Church Guild of the Mesa Congregational church (which is now consolidated with the Plymouth Congregational church under the latter's name) succeeded in getting an initial deposit of 150 books from the County Library. Thus the Angeles Mesa Branch Library was begun. The women responsible were Mrs. H. A. Barre, Mrs. Rudolph Meyers and Mrs. Henry M. Lannan, Sr.

Under the terms of its agreement with the County, the Library Committee was responsible for the books and agreed to keep the library open first two, then later three, afternoons a week. It was then located at Fifty-fourth street and Sixth avenue. But so fast was its growth that in less than a year the three women found that they could no longer handle the project. Ac-

cordingly with the endorsement of the Angeles Mesa Improvement Association, they succeeded in having Joseph F. "Doc" Zica appointed as custodian.

June 15, 1917, saw the West Coast territory, which included the library site, annexed to the City of Los Angeles, and during the year 1918-19, the Los Angeles Public Library took over the county station, making it a sub-branch with Mr. Zica still custodian.

At that time the first record of circulation of books was made. During the year ending June 1919, the Library had 127 subscribers, owned 290 books, and 4710 books were circulated.

Grows With Community

It is interesting to note that the growth of the library is coincident with the growth of the community. As late as 1917, both sides of Fifty-fourth street were planted with vegetables. However, soon after the war, the section built up rapidly with the result that since 1919 homes have been erected on practically every lot.

It was natural after this building activity started that even the energetic Mr. Zica was unable to cope with the library demands. During 1923 the Angeles Mesa Improvement Association was successful in having the library moved to a store building at 2616 West Fifty-fourth street.

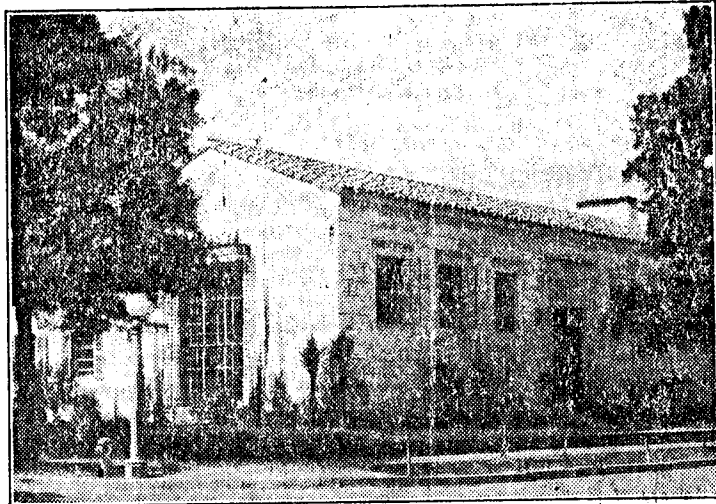
Circulation Increases

When Miss Frances Woodworth was appointed librarian in 1927, the book collection had increased so greatly that it became apparent that the small store building was entirely inadequate. With the funds obtained from the 1925 library bond issue, the present building was erected at Fifty-second street and Fifth avenue.

The library is a beautiful California Renaissance structure, featuring a fireplace faced with colorful Mexican tile and a Douglas fir ceiling. Inscribed in the metal grill of the large studio window are the words: "Translated reading into living."

In August, 1935 Mrs. Elza M. Blanchard was appointed branch librarian. During the seventeen years of its existence as a branch of the public library, the number of books circulated yearly by the Angeles Mesa library has grown from 4710 in 1919 to 210,602 in 1936 and the staff has increased from one person to nine persons. It is now open from 9 A. M. to 9 P. M. daily and from 9 A. M. to 1 P. M. on Saturdays, and serves the district from Jefferson on the north to Slauson on the south, and from Western Avenue west to the city limits. It has a book stock of over 19,000 books, supplemented by many current magazines and pamphlets.

Growth of library traced



Angeles Mesa Branch of the Los Angeles Public Library, located at Fifty-second street and Fifth avenue.

Motion picture studios take part in police show

When the people of Los Angeles gather at the Coliseum the night of July 9 for the third annual police show, more than a parade of police officers, patrol wagons and ambulances will greet them, if the word of Chief of Police James E. Davis is to be taken.

Two shows in the past couple of years have merely been a build-up for the one to be staged this year. A major studios are co-operating, according to Deputy Chief Homer B. Cross, in charge of the show, and 26 divisions of the police force will be on display as well as a number of specialized divisions such as the motorcycle stunt team, the internationally famous pistol team and hi-jinks by the band and drill team.

It will be a show of Los Angeles' Own. But aside from the po-

lice there will be a film show of proportions never witnessed. The Paramount Studio is to furnish the famous Luau wedding feast, ceremonial dances and songs, with 250 natives in the dance and band. The scene is from the show "Waikiki Dedding!" Against a background of studio sets, authentic in every detail, the scene will be produced.

It will be but one of a number of famous scenes presented by the major studios for the "Night in Hollywood" feature of the show. Enough acts to fill more than three hours of the kind of entertainment few of those who visit studios are able to see, will be given. The show from the studio angle is particularly designed to appeal to the people who want to see what goes on behind the walls of a great studio.

PWA may cease to provide crossing guards

The Federal Works Progress Administration very likely will cease providing guards for school children at street intersections with the ending of the present school year, it was learned at the W.P.A. headquarters this week.

If such guards are forthcoming at the reopening of schools after the vacation they probably will have to be provided by the Los Angeles County Relief Administration. Since schools have been closing there are only about 900 persons now employed in this activity out of 1250 at the beginning.

Because of physical shortcom-

ings, most of the men engaged in the work are to be dismissed, while some will be transferred to work that can be found for them. The ones dismissed will be given certifications to LACRA for the dole which the state financed body provides for unemployed legally entitled to that form of public relief.

INSTALL SIGNALS

Street Traffic Engineer Dorsey, under instructions from the City Council, is to install traffic signals at the intersection of Sunset Boulevard and Kingsley Drive as soon as equipment is available.

THE NEW

"General" WATER HEATERS

Element saves the bank

With a 10 year GUARANTEE

New Safety! Longer Life! Economy!

100% Safe and Economical . . . exclusive "Radio Valve" finger-tip control—affords you these advantages and more . . .

APPROVED SAFETY EQUIPMENT ASSOCIATION

BING SHOP
VE. 7236