



Grand Opening Celebration

for the

Angeles Mesa Branch

Los Angeles Public Library

2700 W. 52nd Street

Friday, December 15

10:00 a.m.



**LOS ANGELES
PUBLIC LIBRARY**

Angeles Mesa Branch Library History

The Angeles Mesa Branch Library had its beginnings in 1914 as a book depository in a storefront at 54th Street and 6th Avenue. Established by the Mesa Congregational Church guild, its original collection encompassed 150 books donated by the County Library.

When the area was annexed to the City of Los Angeles in 1918, the Los Angeles Public Library (LAPL) assumed management of this County Station. Soon after, the library moved to new quarters in Mesa Pharmacy, 2800 W. 54th Street, where drugstore proprietor Joseph F. Zika also served as library custodian. The branch served 127 cardholders, owned 290 books and recorded a circulation of 4,710 that year.

On October 9, 1928, the historic Angeles Mesa Branch building was dedicated and opened. Located at 2700 W. 52nd Street, the 4,750-square-foot facility cost approximately \$35,000 to build and furnish. With its "California Renaissance," architecture, it was "a building to vie in beauty and usefulness with any of the branch libraries in the city," according to a branch librarian at the time.

By 1949, the annual circulation had risen to 179,354. When LAPL was divided into regions in 1950, Angeles Mesa was the second largest branch in the Southwest. In the ensuing years, the branch library continued to be responsive to the needs of the community.

In 1992, the branch's historic building was closed in compliance with the Los Angeles City Building and Safety Commission's earthquake hazard reduction order. Its masonry was unreinforced and did not meet seismic safety codes. Temporary quarters were set up at the Angeles Mesa Elementary School library until a larger temporary facility was leased at 2400 W. 54th St.

As part of the Library's Branch Library Building Project, made possible by the passage of Proposition #1, the 1989 Library Bond Issue, and Housing and Community Development Block Grant funds, the historic branch is now structurally reinforced, renovated, and expanded to 6,000 square feet. Froehlich, Kow & Gong, Architects designed the renovation of the facility. It features a new multipurpose room and is air conditioned, carpeted, accessible to the disabled, and has increased electrical capacity to accommodate modern library technology, including LAPL's new automated circulation system and computerized catalog which provides information about books available within the entire LAPL system.

The Angeles Mesa branch library is located in the Sixth Council District, represented by Councilmember Ruth Galanter.

Historia de la Biblioteca Sucursal de Angeles Mesa

La Biblioteca Sucursal de Angeles Mesa tuvo sus comienzos en 1914 como un depósito para libros en una tienda en la Calle 54 y la 6^a Avenida. Establecida por la comunidad de la Iglesia Congregacional Mesa, su colección original abarcaba 150 libros donados por la Biblioteca del Condado.

Cuando el área fué añadida a la Ciudad de Los Angeles en 1918, la Biblioteca Pública de Los Angeles (LAPL) tomó el manejo de esta estación del Condado. Poco después, la biblioteca se trasladó a un nuevo edificio en la Farmacia Mesa, ubicada en 2800 W. 54 St., donde el propietario de la farmacia, Joseph F. Zika, también servía como guardián de la biblioteca. La sucursal servía a 127 miembros, era propietaria de 290 libros y anotó una circulación de 4,710 libros prestados ese año.

El 9 de octubre, 1928, el edificio histórico de la Sucursal de Angeles Mesa fué abierto y dedicado. Ubicado en 2700 W 52nd St., el edificio de 4,750 pies cuadrados costó aproximadamente \$35,000 para construir y amueblar. Con su arquitectura en stilo de "Renacimiento Californiano" era "un edificio que competía en belleza y utilidad con cualquiera de las bibliotecas sucursales en la ciudad," según una bibliotecaria de la sucursal de aquel tiempo.

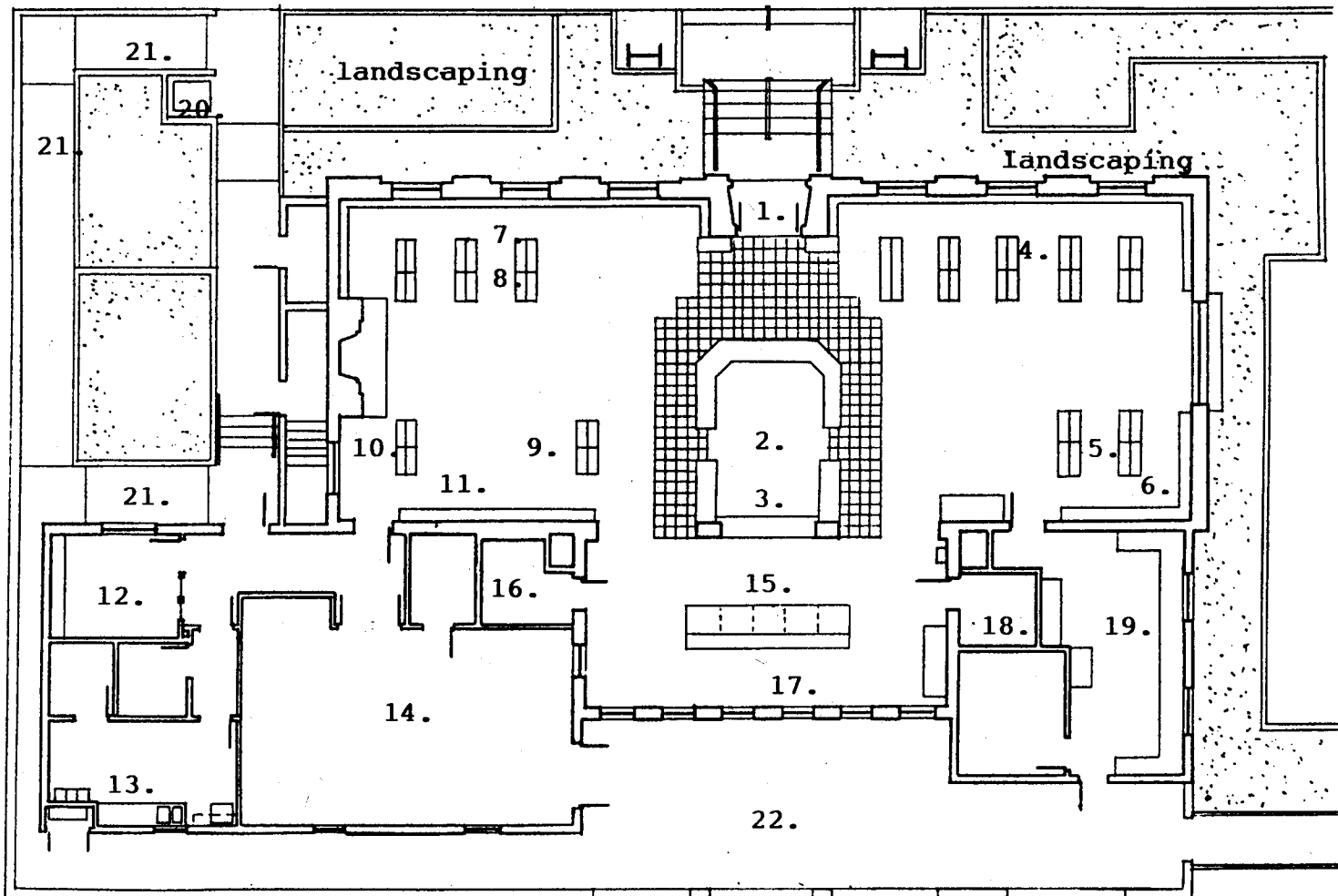
Por el 1949, la circulación anual había aumentado a 179,354. Cuando la LAPL se dividió en regiones en 1950, Angeles Mesa era la segunda sucursal más grande en el Suroeste. En los años siguientes, la biblioteca sucursal continuó respondiendo a las necesidades de la comunidad.

En 1992 se cerró el edificio histórico de la sucursal de acuerdo con la orden para reducción de peligro sísmico de la Comisión de Seguridad y Edificios de la Ciudad de Los Angeles. Su mampostería no estaba reforzada y no cumplía con los códigos de seguridad sísmica. Se estableció alojamiento temporal en la biblioteca de la Escuela Elemental de Angeles Mesa hasta que un edificio temporal más grande se alquiló en 2400 W 54 St.

Como parte del Proyecto de Construcción de Bibliotecas Sucursales, hecho realidad por la promulgación de la Proposición #1, el Bono Bibliotecario de 1989, y fondos para Alojamiento y Desarrollo Comunitario, la sucursal histórica ahora está reforzada, renovada y expandida a 6,000 pies cuadrados. Los Arquitectos Froehlich, Kow y Gong diseñaron la renovación del edificio. Tiene un salón para usos múltiples, aire acondicionado, alfombra, acceso a los incapacitados, y más capacidad eléctrica para acomodar la tecnología moderna bibliotecaria incluyendo el nuevo sistema automatizado de circulación, y el catálogo electrónico que provee información acerca de libros disponibles dentro de todo el sistema de la LAPL.

La Biblioteca Sucursal de Angeles Mesa está ubicada en el Sexto Distrito Municipal representado por la Concejal Ruth Galanter.

ANGELES MESA BRANCH LIBRARY



FLOOR PLAN

- | | | | |
|-----|---------------------------------|-----|--|
| 1. | MAIN ENTRANCE | 12. | SENIOR LIBRARIAN'S OFFICE |
| 2. | CIRCULATION DESK | 13. | STAFF LOUNGE |
| 3. | INFORMATION DESK | 14. | MULTI-PURPOSE ROOM |
| 4. | ADULT & YOUNG ADULT NON-FICTION | 15. | AUDIO VISUAL CENTER/ ON-LINE CATALOGUE |
| 5. | MAGAZINES | 16. | MEN'S RESTROOM |
| 6. | ADULT FICTION | 17. | REFERENCE COLLECTION |
| 7. | CHILDREN'S NON-FICTION | 18. | WOMEN'S RESTROOM |
| 8. | PRE-SCHOOL/ PICTURE BOOKS | 19. | STAFF WORKROOM |
| 9. | CHILDREN'S FICTION | 20. | OUTDOOR BOOK DROP |
| 10. | YOUNG ADULT FICTION/ CLASSICS | 21. | DISABLED ACCESS |
| 11. | VIDEOS | 22. | PATIO |

PROGRAM

MASTER OF CEREMONIES

John W. Mack

President, Los Angeles Urban League

FLAG SALUTE

Crenshaw High School Color Guard

INVOCATION

The Reverend Arabella Bowman, Bethesda Temple

WELCOME

Susan Goldberg Kent, City Librarian

ENTERTAINMENT

Mrs. Franklin's Dance Troupe, Angeles Mesa Elementary School

GUEST SPEAKERS

Ruth Galanter, Councilmember, Sixth District

Olivia Cueva-Fernández, President, Board of Library Commissioners

Parker C. Anderson, General Manager, City of Los Angeles

Community Development Department

Henrietta Kearney, President, Friends of the Angeles Mesa Branch Library

Helen Lastra, Fifth Grade Student, Angeles Mesa Elementary School

RIBBON CUTTING

REFRESHMENTS

Friends of the Angeles Mesa Branch Library

Chris Cakes and Catering

SPECIAL EVENTS IN THE LIBRARY

Norman Johnson Trio - 10:30 a.m.

Grandparents and Books storytelling - 1:00 - 5:00 p.m.

We Tell Stories - 3:00 p.m.

Thanks to View Park Florist for providing floral center pieces.

MAYOR OF LOS ANGELES
Richard J. Riordan

COUNCILMEMBER - SIXTH DISTRICT
Ruth Galanter

BOARD OF LIBRARY COMMISSIONERS
Olivia Cueva-Fernández, President
Lucy McCoy, Vice President
Robert Burkett
Gary Ross

CITY LIBRARIAN
Susan Goldberg Kent

DIRECTOR OF BRANCHES
Carmen Martinez

ASSISTANT DIRECTOR OF BRANCHES
Fontayne Holmes

PRINCIPAL LIBRARIAN
BRANCH CONSTRUCTION PROJECTS
Juliana Cheng

CENTRAL/SOUTHERN REGIONAL MANAGER
Barbara Clark

BRANCH LIBRARIAN
Cathy Chang

BRANCH STAFF
Estelle Ichino, Children's Librarian; **Sybil Blazej-Yee**, Young Adult Librarian;
Sasshua Hollomon, **Yolanda Blackwell**, Clerk Typists; **Elvira Clarke**,
Library Clerical Assistant; **Ruth Culpepper**, **Darryl Nixon**,
Rosalva Vargas, Messenger Clerks