

GENERAL PARTICULARS



Name	: Helena
Ex.Name/s	: Eemslift Christiaan, BBC Islander, Islander, Seaboard Endeavour, Delta
Owners	: AW Shipping Ltd
Built	: 1998, Zhejiang Shipyard
Flag	: Gibraltar
Home Port	: Gibraltar
Call Sign	: ZDPV9
IMO Number	: 9183491
Length Overall	: 100.94 m
Beam	: 16.40 m
Draught Fully Laden	: 6.24 m
Air Draught in Ballast/Loaded	: 36.50 m
Grain / Bale Capacity	: 224500 cbft / 6330 cbm
Dwat	: 4,924 mts
Dwcc Summer / Winter	: 4,350 mts / 4,250 mts
GT / NT	: 3862 / 1901
Class	: Lloyds Register LMC UMS, 100A1, Strengthened for Heavy Cargoes, Container Cargoes in Holds, on Upper Deck and on Hatch Covers, LI
P&I	: West of England
Speed / Consumption	: 14 knots on 14t/day IFO 180CST, MDO 2.5t/day working cargo

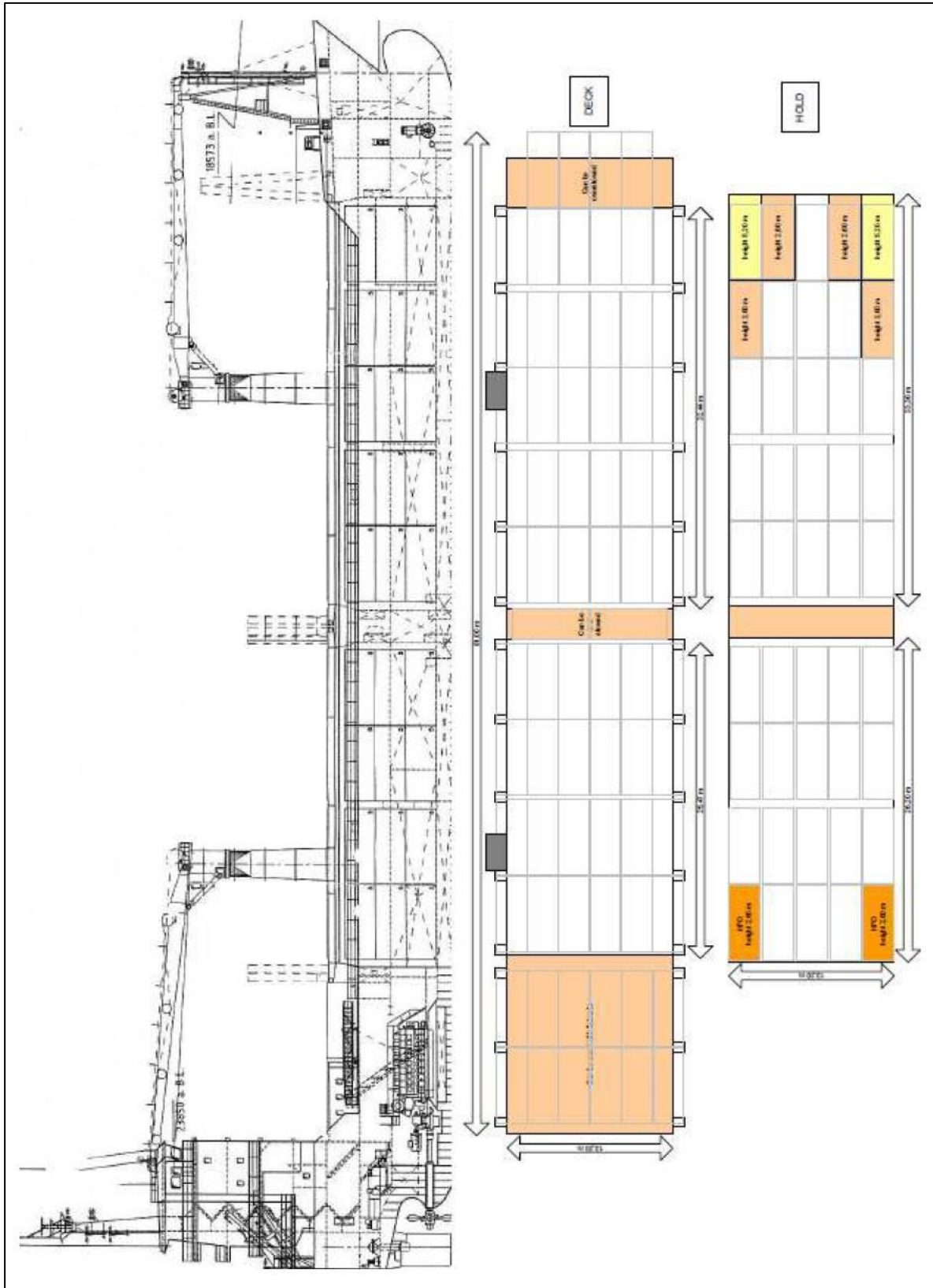
HOLDS / HATCHES

Vessel Type	: SID / Box / Geared		
Gear	: 2x 40 mtn, combinable 80 mtn, situated port side		
Holds	: 1 – 33.42 m * 13.20 m * 8.40 m / 2 – 26.27 m * 13.20 m * 8.40 m		
Hatches	: 1 – 32.44 m * 13.20 m / 2 – 25.47 m * 13.20 m, Kvaerner folding type		
Max Length on Deck	: 81.00 m		
Tanktops	: Steelfloored		
Permissible Loads	: Max 12.00 mtn per m ² // Max 2.0 mtn per m ² on deck		
Airchanges	: 6 per hour basis empty hold		
Reefer Plugs	: 36		
Stackload			
	TEU	FEU	
Deck	40 / 50 mtn	60 mtn	
Hold	72 mtn	90 mtn	
Container Intake			
	TEU	FEU+TEU	HC
Deck	239	115+18	99
Hold	125	56+13	36
TTL	364	171+31	135

COMMUNICATION

Telephone	: +44 7711 880 114
Email	: master@helena.awships.com

All particulars believed to be correct and given in good faith, but without guarantee



All particulars believed to be correct and given in good faith, but without guarantee