

# USBFlux

Version: 1.0

Date: June 22, 2018



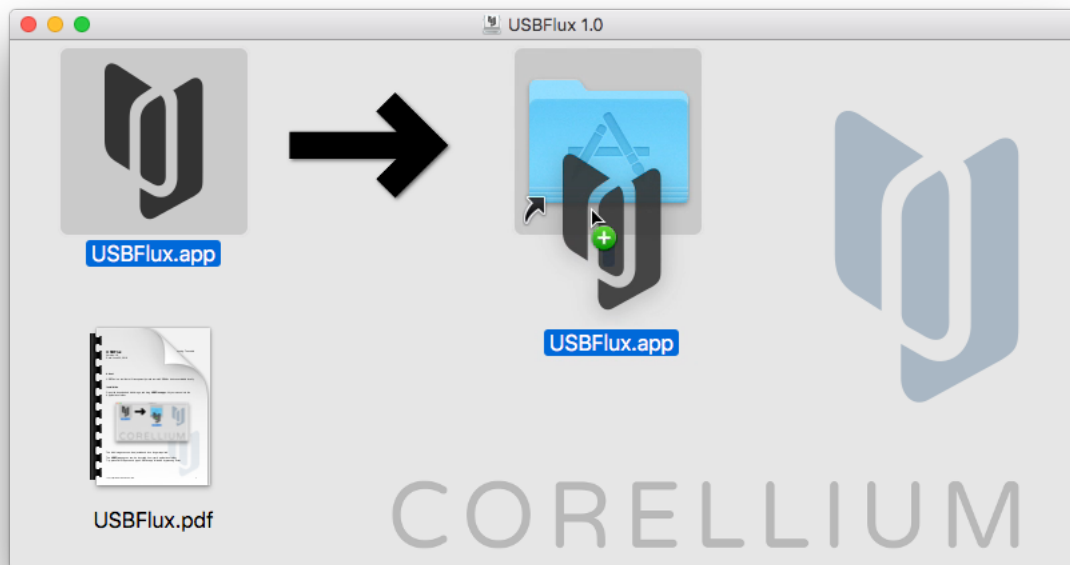
CORELLIUM

## About

USBFlux is a tool that will transparently make remote USBMux devices available locally.

## Installation

Open the downloaded disk image, and drag **USBFlux.app** with your mouse into the Applications folder:



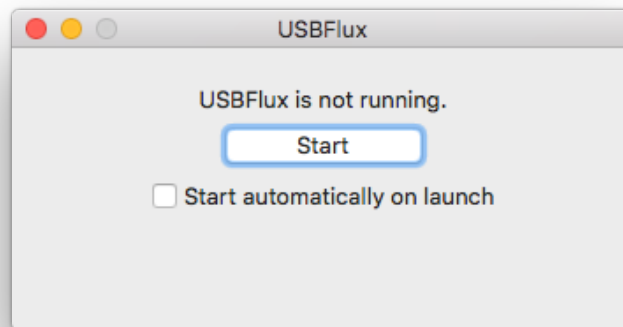
The disk image can now be ejected and is no longer required.

The **USBFlux** app can now be launched from your Applications folder.

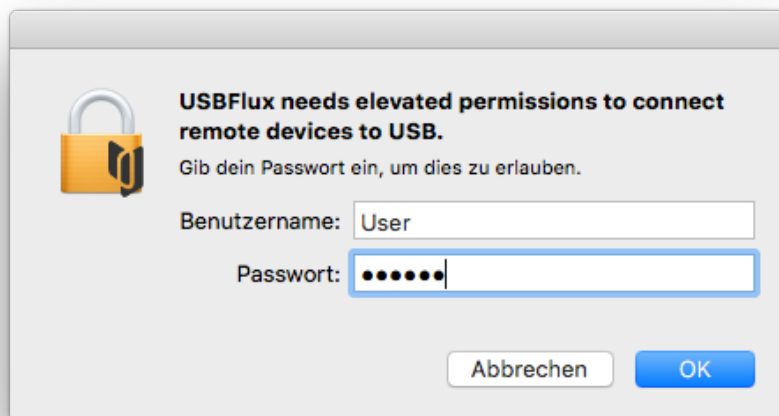
Tip: press CMD+Space and type USBFlux.app followed by pressing Enter.

## Usage

When launching USBFlux.app for the first time USBFlux will not be running. To enable USBFlux, just click Start.

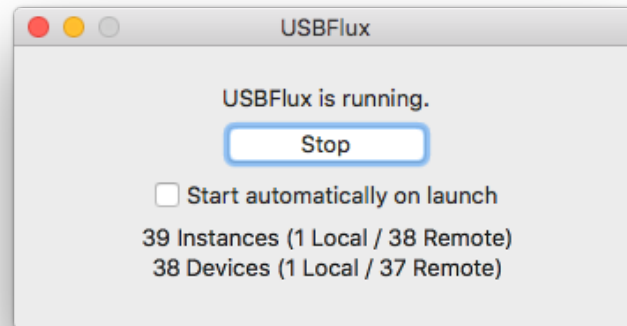


The first time USBFlux is started you have to grant permissions so it can be properly configured. Enter your password, and hit OK.



This is a one-time setup and you will not have to enter your password again under normal circumstances.

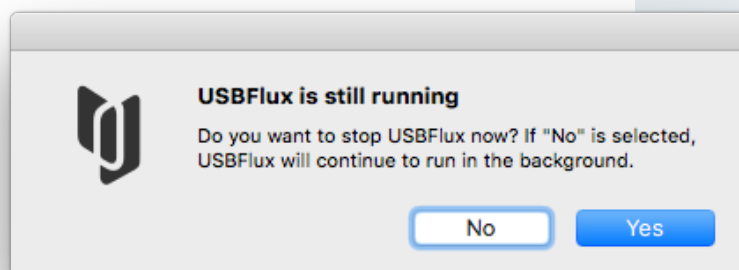
USBFlux is now running and it will show the current status, including the number of connected devices:



Important: All applications that use USBMux devices, like Xcode, need to be restarted to be able to pick up the remote device that are now made available through USBFlux. You also have the option to start USBFlux automatically when the app is started, just tick the checkbox "Start automatically on launch".

To stop USBFlux, click Stop. Also in this case USBMux-aware applications - like Xcode - have to be restarted to function properly again.

USBFlux runs in the background so that the USBFlux app can be closed while still providing access to the remote devices. If you close the USBFlux app you will be prompted if you want to keep it running in the background or not:



Select 'No' to keep it running, or 'Yes' to stop it.