



## Youth participation in public affairs in Hong Kong

Research Office  
Legislative Council Secretariat

# Numbers & Figures

ISSF04/17-18

In recent years, there has been increasing participation of young people aged 18-35 in local public affairs, attributable to rising educational attainment and growing civic awareness of youth in Hong Kong. This issue of **Numbers and Figures** highlights their socioeconomic profile and participation in the Legislative Council and District Council Elections and advisory and statutory bodies in Hong Kong.

**Table 1 – Socioeconomic profile of youth aged 18-35 in 2016**

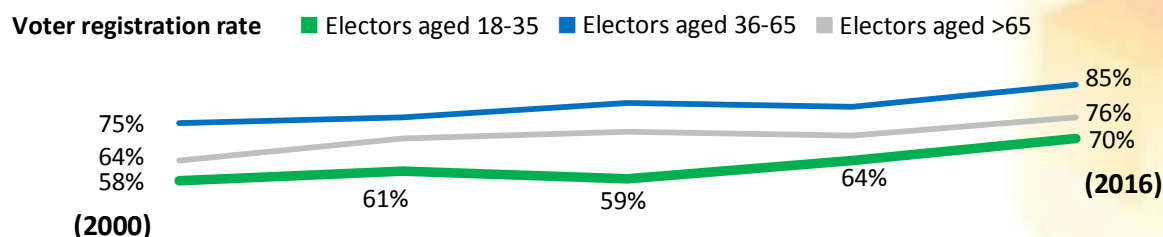
	Youth aged 18-35	Total population
<b>Population</b>		
– Number of persons	1 794 500 (24.3%) <sup>(1)</sup>	7 377 100
– Average annual growth during 2007-2016	-0.1%	0.7%
– Cumulative growth during 2007-2016	-1.6%	6.3%
<b>Educational attainment</b>		
– Secondary and below	62.0%	68.4%
– Post-secondary and above	38.0%	31.6%
<b>Economically active population</b>		
– Labour force participation rate	73.8%	61.1%
– Unemployment rate	5.0%	3.4%
<b>Income</b>		
– Median of monthly employment earnings (HK\$)	15 000	15 000
<b>Proportion of employed persons by occupation</b>		
– Managers and professionals	17.9%	19.2%
– Associate professionals	27.8%	19.9%
– Other occupations	54.3%	60.9%

Note: (1) As a percentage share of the total population.

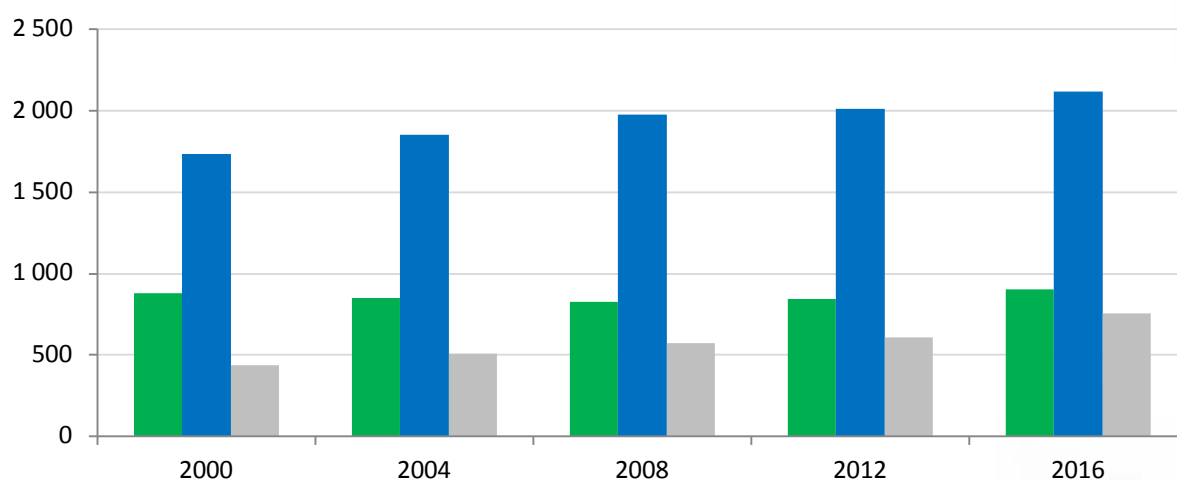
Source: Census and Statistics Department.

## Part A – Pattern of voting behaviour

### Figure 1 – Voter registration for Legislative Council Elections, 2000-2016



**Number of registered electors ('000)** ■ Electors aged 18-35 ■ Electors aged 36-65 ■ Electors aged >65



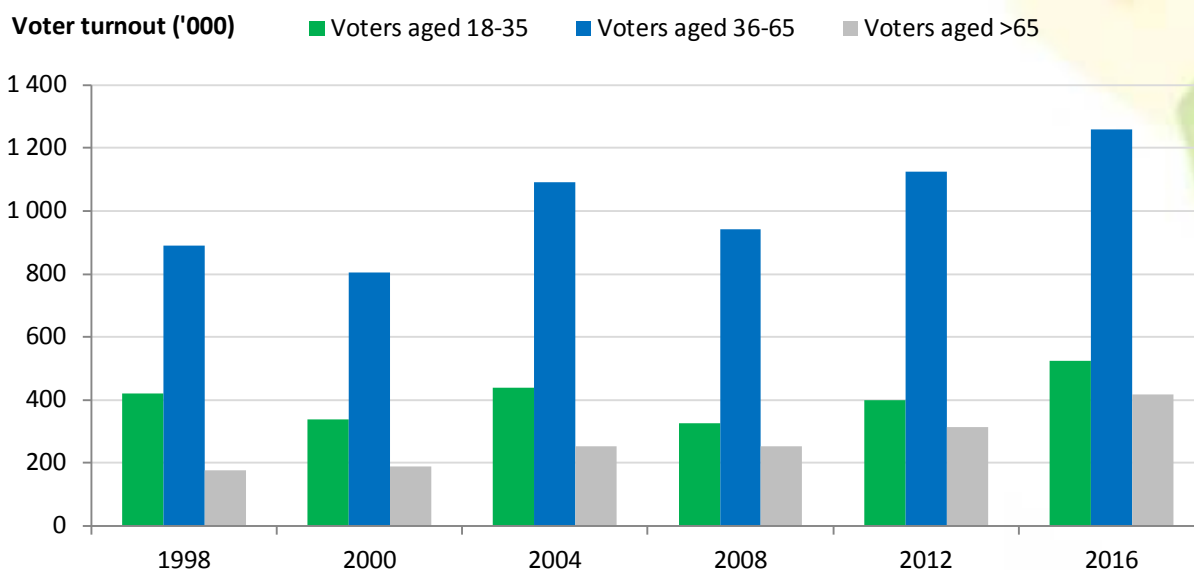
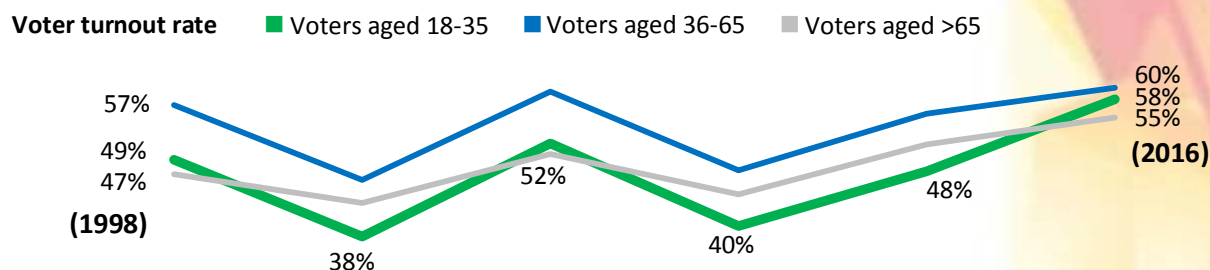
	2000	2004	2008	2012	2016
<b>Estimated number of eligible electors<sup>(1)</sup></b>	4 525 015	4 539 800	4 661 700	4 711 900	4 789 700
– Aged 18-35	<b>1 513 192</b>	<b>1 383 800</b>	<b>1 386 700</b>	<b>1 316 700</b>	<b>1 293 500</b>
– Aged 36-65	2 332 256	2 426 100	2 473 300	2 536 100	2 498 700
– Aged >65	679 567	729 900	801 700	859 100	997 500
<b>Number of registered electors<sup>(2)</sup></b>	3 055 378 (67.5%)	3 207 227 (70.6%)	3 372 007 (72.3%)	3 466 201 (73.6%)	3 779 085 (78.9%)
– Aged 18-35	<b>881 933</b> <b>(58.3%)</b>	<b>848 796</b> <b>(61.3%)</b>	<b>823 880</b> <b>(59.4%)</b>	<b>842 020</b> <b>(63.9%)</b>	<b>905 049</b> <b>(70.0%)</b>
– Aged 36-65	1 737 495 (74.5%)	1 852 155 (76.3%)	1 974 973 (79.9%)	2 014 850 (79.4%)	2 117 635 (84.7%)
– Aged >65	435 950 (64.2%)	506 276 (69.4%)	573 154 (71.5%)	609 331 (70.9%)	756 401 (75.8%)

Notes: (1) Estimated number of Hong Kong permanent identity card holders.

(2) Figures in parentheses denote voter registration rate.

Sources: Census and Statistics Department and Electoral Affairs Commission.

**Figure 2 – Voter turnout in Legislative Council Elections, 1998-2016**

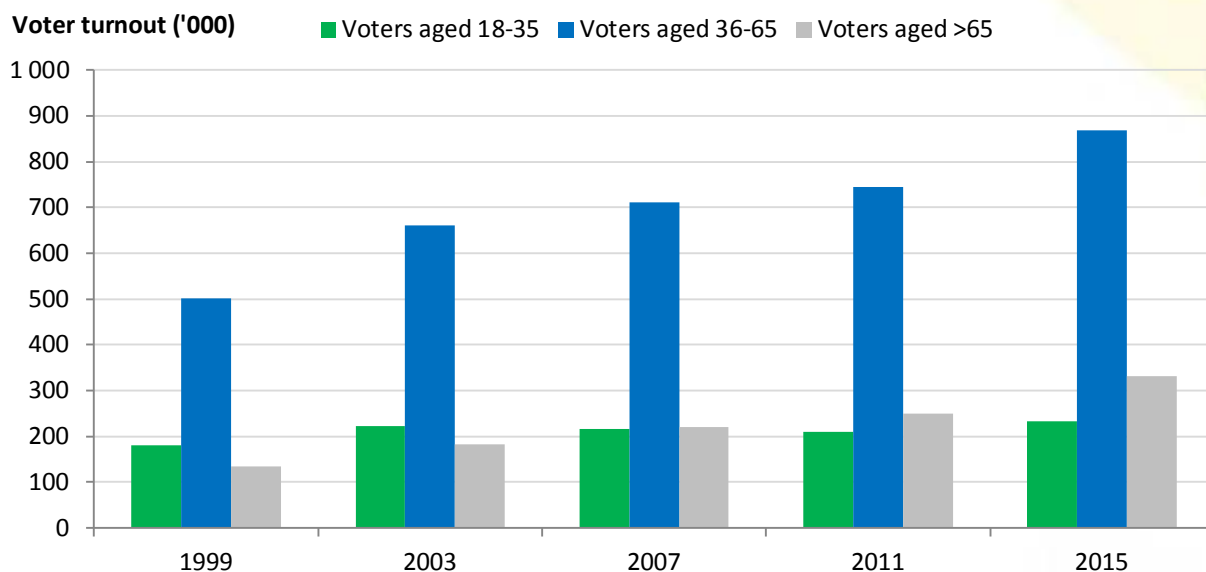
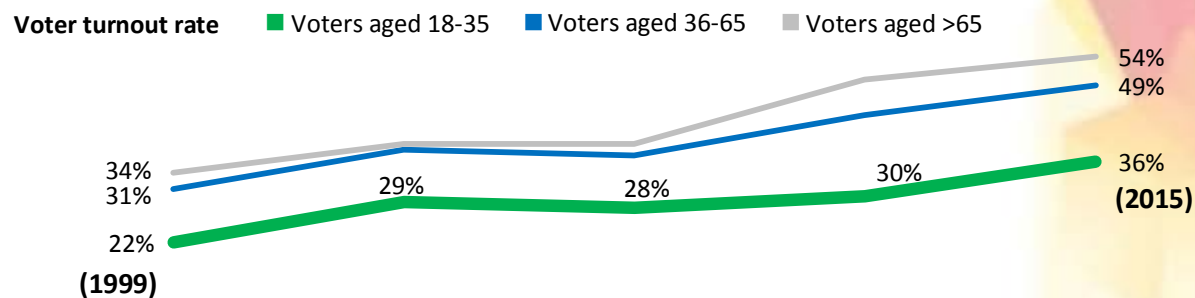


	1998	2000	2004	2008	2012	2016
<b>Total number of registered electors</b>	2 795 371	3 055 378	3 207 227	3 372 007	3 466 201	3 779 085
– <b>Aged 18-35</b>	<b>854 576</b> <b>(30.6%)<sup>(1)</sup></b>	<b>881 933</b> <b>(28.9%)</b>	<b>848 796</b> <b>(26.5%)</b>	<b>823 880</b> <b>(24.4%)</b>	<b>842 020</b> <b>(24.3%)</b>	<b>905 049</b> <b>(23.9%)</b>
– <b>Aged 36-65</b>	1 564 036 (56.0%)	1 737 495 (56.9%)	1 852 155 (57.7%)	1 974 973 (58.6%)	2 014 850 (58.1%)	2 117 635 (56.0%)
– <b>Aged &gt;65</b>	376 759 (13.5%)	435 950 (14.3%)	506 276 (15.8%)	573 154 (17.0%)	609 331 (17.6%)	756 401 (20.0%)
<b>Voter turnout rate (all age groups)</b>	54.5%	43.6%	55.6%	45.2%	53.0%	58.3%
– <b>Aged 18-35</b>	<b>49.2%</b>	<b>38.3%</b>	<b>51.6%</b>	<b>39.8%</b>	<b>47.6%</b>	<b>57.9%</b>
– <b>Aged 36-65</b>	57.0%	46.4%	59.0%	47.7%	55.8%	59.5%
– <b>Aged &gt;65</b>	47.2%	43.1%	50.1%	44.3%	51.4%	55.3%

Note: (1) Figures in parentheses denote the proportion of the respective elector age group in the total number of registered electors. They may not add up to the total due to rounding.

Source: Electoral Affairs Commission.

**Figure 3 – Voter turnout in District Council Elections, 1999-2015**



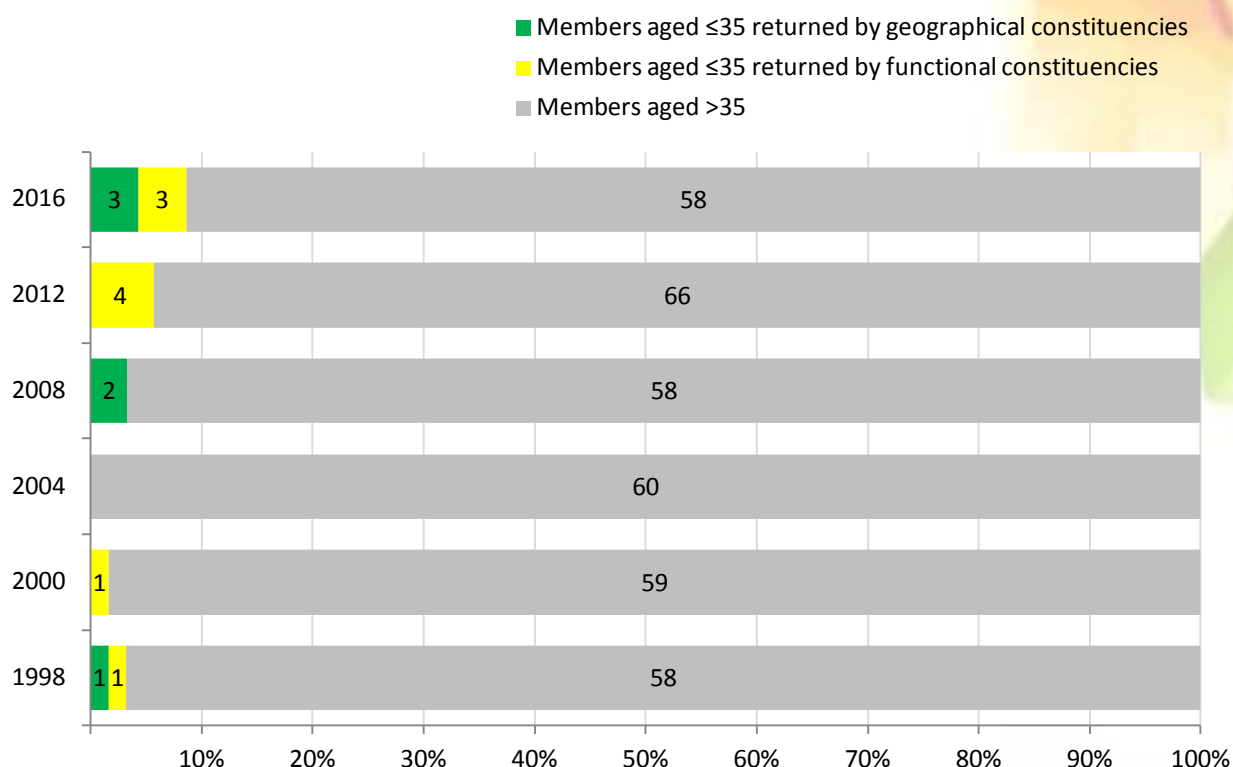
	1999	2003	2007	2011	2015
<b>Total number of registered electors</b>	2 832 524 (100%)	2 973 612 (100%)	3 295 826 (100%)	3 560 535 (100%)	3 693 942 (100%)
– <b>Aged 18-35</b>	<b>830 834</b> <b>(29.3%)<sup>(1)</sup></b>	<b>759 410</b> <b>(25.5%)</b>	<b>787 886</b> <b>(23.9%)</b>	<b>860 045</b> <b>(24.2%)</b>	<b>872 197</b> <b>(23.6%)</b>
– <b>Aged 36-65</b>	1 603 268 (56.6%)	1 740 741 (58.5%)	1 945 861 (59.0%)	2 075 832 (58.3%)	2 093 581 (56.7%)
– <b>Aged &gt;65</b>	398 422 (14.1%)	473 461 (15.9%)	562 079 (17.1%)	624 658 (17.5%)	728 164 (19.7%)
<b>Voter turnout rate (all age groups)</b>	28.8%	35.9%	34.9%	41.5%	47.0%
– <b>Aged 18-35</b>	<b>21.8%</b>	<b>29.2%</b>	<b>27.5%</b>	<b>29.8%</b>	<b>36.2%</b>
– <b>Aged 36-65</b>	31.2%	38.0%	36.6%	43.9%	48.9%
– <b>Aged &gt;65</b>	33.8%	38.6%	39.2%	49.7%	54.4%

Note: (1) Figures in parentheses denote the proportion of the respective elector age group in the total number of registered electors. They may not add up to the total due to rounding.

Source: Electoral Affairs Commission.

## Part B – Participation in Legislative Council and District Council Elections

**Figure 4 – Legislative Council Members aged 35 and below returned by different electoral methods, 1998-2016<sup>(1), (2), (3)</sup>**



Remarks: The figures in the bars refer to the actual number of seats.

	Members aged 35 and below returned by geographical constituencies		Members aged 35 and below returned by functional constituencies		Total number of Members aged 35 and below	
	Number	% share	Number	% share	Number	% share
1998	1	5.0%	1	3.3%	2	3.3%
2000	0	–	1	3.3%	1	1.7%
2004	0	–	0	–	0	–
2008	2	6.7%	0	–	2	3.3%
2012	0	–	4	11.4%	4	5.7%
2016	3 <sup>(1), (2), (3)</sup>	8.6%	3	8.6%	6	8.6%

Notes: (1) According to the Judgment of the Court of First Instance of the High Court on 15 November 2016, Sixtus LEUNG Chung-hang and YAU Wai-ching have been disqualified from assuming the office of a Member of the Legislative Council ("LegCo"), and have vacated the same since 12 October 2016, and are not entitled to act as a Member of LegCo.

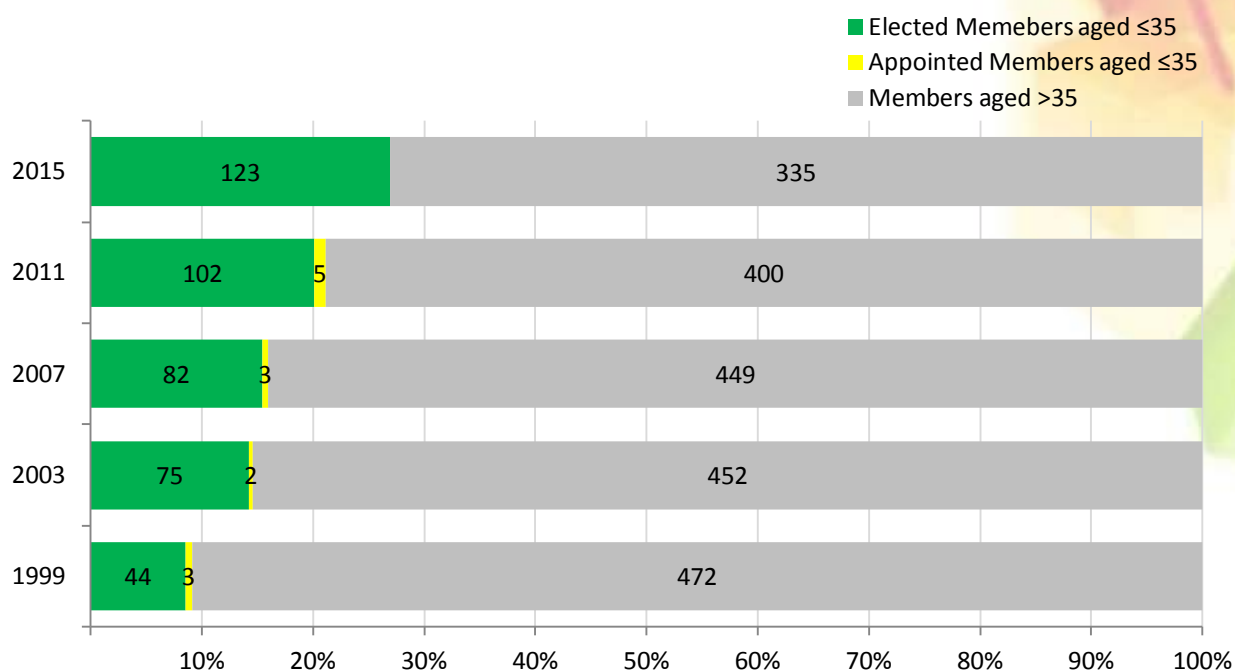
(2) According to the Judgement of the Court of First Instance of the High Court on 14 July 2017, LEUNG Kwok-hung, Nathan LAW Kwun-chung, YIU Chung-yim and LAU Siu-lai have been disqualified from assuming the office of a Member of LegCo, and have vacated the same since 12 October 2016, and are not entitled to act as a Member of LegCo.

(3) Among the six Members disqualified, three of them aged 35 and below and three aged above 35 in 2016.

Sources: Census and Statistics Department, Electoral Affairs Commission, and 香港選舉資料匯編(Various years).



**Figure 5 – District Council<sup>(1)</sup> Members aged 35 and below returned by different electoral methods, 1999-2015**



Remarks: The figures in the bars refer to the actual number of seats.

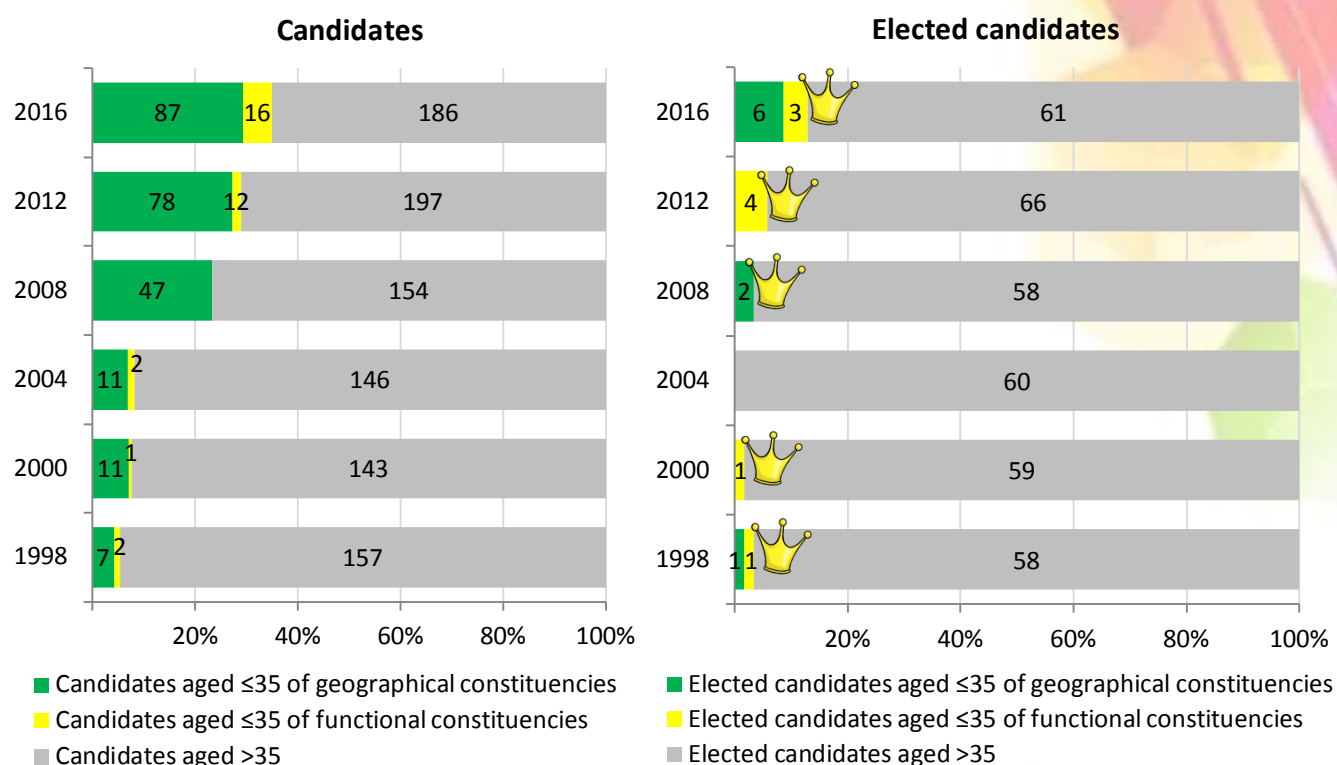
	Elected Members aged 35 and below		Appointed Members aged 35 and below		Total number of Members aged 35 and below	
	Number	% share	Number	% share	Number	% share
1999	44	11.3%	3	2.9%	47	9.1%
2003	75	18.8%	2	2.0%	77	14.6%
2007	82	20.2%	3	2.9%	85	15.9%
2011	102	24.8%	5	7.4%	107	21.1%
2015	123	28.5%	— <sup>(2)</sup>	—	123	26.9%

Notes: (1) District Council was renamed District Council in January 2000, consequential to the 1998 review of the structure and function of district organization to underline their vital role in district administration.

(2) The appointment system was abolished from the commencement of the Fifth District Councils on 1 January 2016, following the passage of the District Council (Amendment) Bill 2013 by the Legislative Council on 22 May 2013.

Sources: Census and Statistics Department, Electoral Affairs Commission, and 香港選舉資料匯編 (various years).

**Figure 6 – Candidates and elected candidates aged 35 and below in Legislative Council Elections, 1998-2016**



Remarks: The figures in the bars refer to the actual number of candidates and seats.

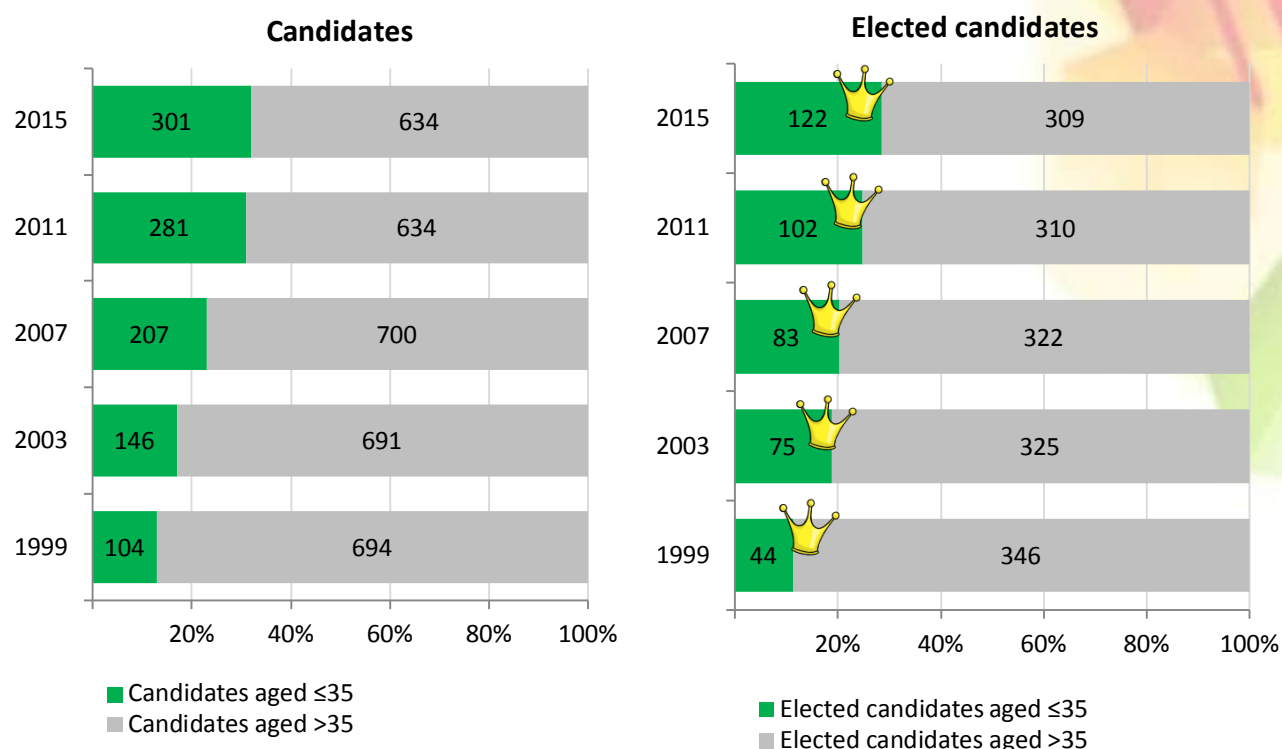
	1998			2000			2004 <sup>(1)</sup>		2008		2012		2016	
	GC	FC	EC	GC	FC	EC	GC	FC	GC	FC	GC	FC	GC	FC
Number of candidates aged ≤35	7	2	0	11	1	0	11	2	47	0	78	12	87	16
Total number of candidates	81	60	25	88	57	10	88	71	142	59	216	71	213	76
Percentage share of candidates aged ≤35	5.4%			7.7%			8.2%		23.4%		31.4%		35.6%	
Number of elected candidates aged ≤35	1	1	0	0	1	0	0	0	2	0	0	4	6	3
Total number of elected candidates	20	30	10	24	30	6	30	30	30	30	35	35	35	35
Percentage share of elected candidates aged ≤35	3.3%			1.7%			–		3.3%		5.7%		12.9%	

Note: (1) In the 2004 LegCo elections, the election committee constituency ceased to exist with its seats transferred to the directly elected geographical constituencies. Since then, LegCo has equal numbers of Members returned from the geographical and the functional constituencies.

Remarks: GC = geographical constituency; FC = functional constituency; and EC = Election Committee.

Sources: Census and Statistics Department, Electoral Affairs Commission and 香港選舉資料匯編 (various years).

**Figure 7 – Candidates and elected candidates aged 35 and below in District Council Elections, 1999-2015**



Remarks: The figures in the bars refer to the actual number of candidates and seats.

	1999	2003	2007	2011	2015
Number of candidates aged ≤35	104	146	207	281	301
Total number of candidates	798	837	907	915	935
Percentage share of candidates aged ≤35	13.0%	17.4%	22.8%	30.7%	32.2%
Number of elected candidates aged ≤35	44	75	83	102	122
Total number of elected candidates	390	400	405	412	431
Percentage share of elected candidates aged ≤35	11.3%	18.8%	20.5%	24.8%	28.3%

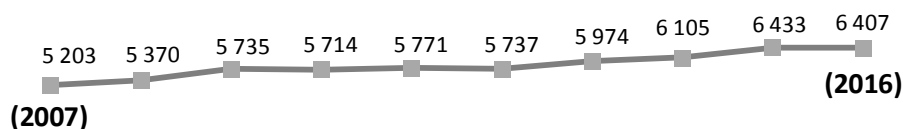
Sources: Census and Statistics Department, Electoral Affairs Commission and 香港選舉資料匯編 (various years).



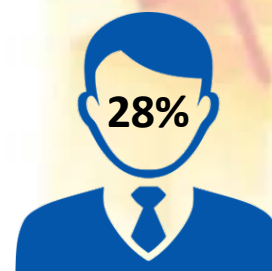
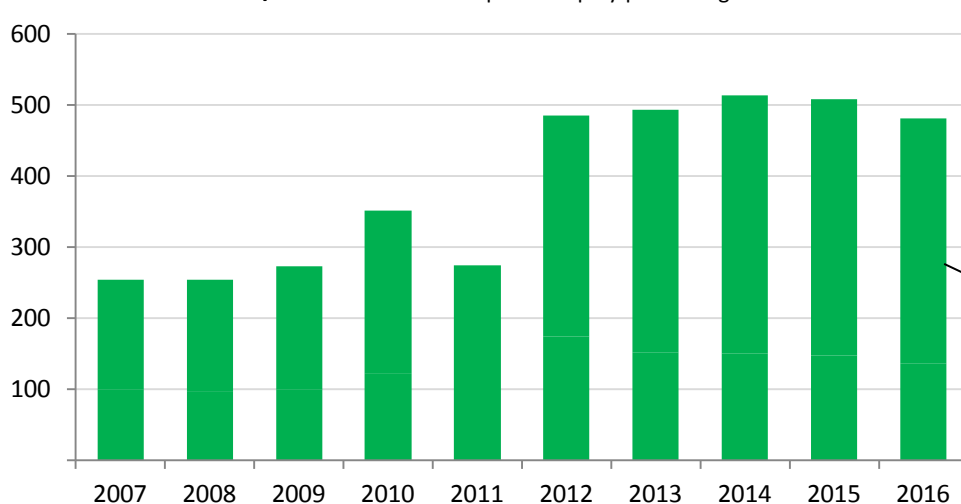
## Part C – Membership in Advisory and Statutory Bodies ("ASBs"<sup>(1)</sup>)

### Figure 8 – Number of ASBs' membership taken up by persons aged 35 and below,<sup>(2)</sup> 2007-2016

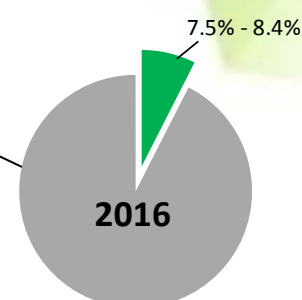
Total number of ASB membership



Number of membership



Percentage share of persons aged ≤35 who serve more than one ASB in 2016<sup>(3)</sup>



Percentage share of membership taken up by persons aged ≤35

	Total number of members (A)	Total number of members who provided information on age (B)	Number of members aged ≤35 (C)	% share of members aged 35 and below	
				(C)/(B)	(C)/(A)
2007 <sup>(4)</sup>	5 203	4 894	254	5.2%	4.9%
2008	5 370	4 950	254	5.1%	4.7%
2009	5 735	5 225	273	5.2%	4.8%
2010	5 714	5 217	351	6.7%	6.1%
2011	5 771	5 364	275	5.1%	4.8%
2012	5 737	5 227	486	9.3%	8.5%
2013	5 974	5 402	494	9.1%	8.3%
2014	6 105	5 519	514	9.3%	8.4%
2015	6 433	5 775	508	8.8%	7.9%
2016	6 407	5 746	481	8.4%	7.5%

Notes: (1) ASBs include (a) advisory boards and committees; (b) non-departmental public bodies; (c) regulatory boards and bodies; (d) appeal boards; (e) advisory and management boards of trusts, funds and funding schemes; (f) public corporations; and (g) miscellaneous boards and committees. Their functions include giving advice to the Government or performing public functions which otherwise would be performed by government departments. Membership comprises both Government officials and members of the public, while the figures in this section solely cover members of the public.

(2) At the time of the first appointment to respective ASB.

(3) Appointed members of the public can serve a maximum of six ASBs at any one time but not for more than six years on the same ASB.

(4) Figures as at end-December of each year.

Source: Home Affairs Bureau.

## References

1. *Census and Statistics Department.* (2017) Available from: [http://www.censtatd.gov.hk/home/index\\_tc.jsp](http://www.censtatd.gov.hk/home/index_tc.jsp) [Accessed December 2017].
2. *Electoral Affairs Commission.* (2017) Available from: <http://www.eac.gov.hk/> [Accessed December 2017].
3. GovHK. (2017) *The Government of the Hong Kong Special Administrative Region Gazette.* Various years. Available from: <http://www.gld.gov.hk/egazette/english/whatsnew/whatsnew.html> [Accessed December 2017].
4. Home Affairs Bureau. (2017) *District, Community and Public Relations.* Available from: [http://www.hab.gov.hk/en/policy\\_responsibilities/District\\_Community\\_and\\_Public\\_Relations/advisory.htm](http://www.hab.gov.hk/en/policy_responsibilities/District_Community_and_Public_Relations/advisory.htm) [Accessed December 2017].
5. 葉天生編：《香港選舉資料匯編：1996年－2000年》，香港，香港中文大學香港亞太研究所 2001年3月版。
6. 葉天生編：《香港選舉資料匯編：2001年－2004年》，香港，香港中文大學香港亞太研究所 2005年12月版。
7. 葉天生編：《香港選舉資料匯編：2005年－2012年》，香港，香港中文大學香港亞太研究所 2015年2月版。
8. 雷競璇、沈國祥編：《香港選舉資料匯編：1982年－1994年》，香港，香港中文大學香港亞太研究所 1995年1月版。
9. 雷競璇、沈國祥編：《香港選舉資料匯編：1995年》，香港，香港中文大學香港亞太研究所 1996年4月版。

---

Research Office  
Information Services Division  
Legislative Council Secretariat  
18 December 2017  
Tel: 2871 2134

---

*Numbers and Figures are compiled for Members and Committees of the Legislative Council. They are not legal or other professional advice and shall not be relied on as such. Numbers and Figures are subject to copyright owned by The Legislative Council Commission (The Commission). The Commission permits accurate reproduction of Numbers and Figures for non-commercial use in a manner not adversely affecting the Legislative Council, provided that acknowledgement is made stating the Research Office of the Legislative Council Secretariat as the source and one copy of the reproduction is sent to the Legislative Council Library. The paper number of this issue of Numbers and Figures is ISSF04/17-18.*