

# Quick Start Guide

RDR-HX900

Follow the three steps below to connect, setup and make recordings on your DVD recorder.

**step1 Hookup**

**step2 Setup**

**step3 Record!**

©2004 Sony Corporation  
Printed in Malaysia

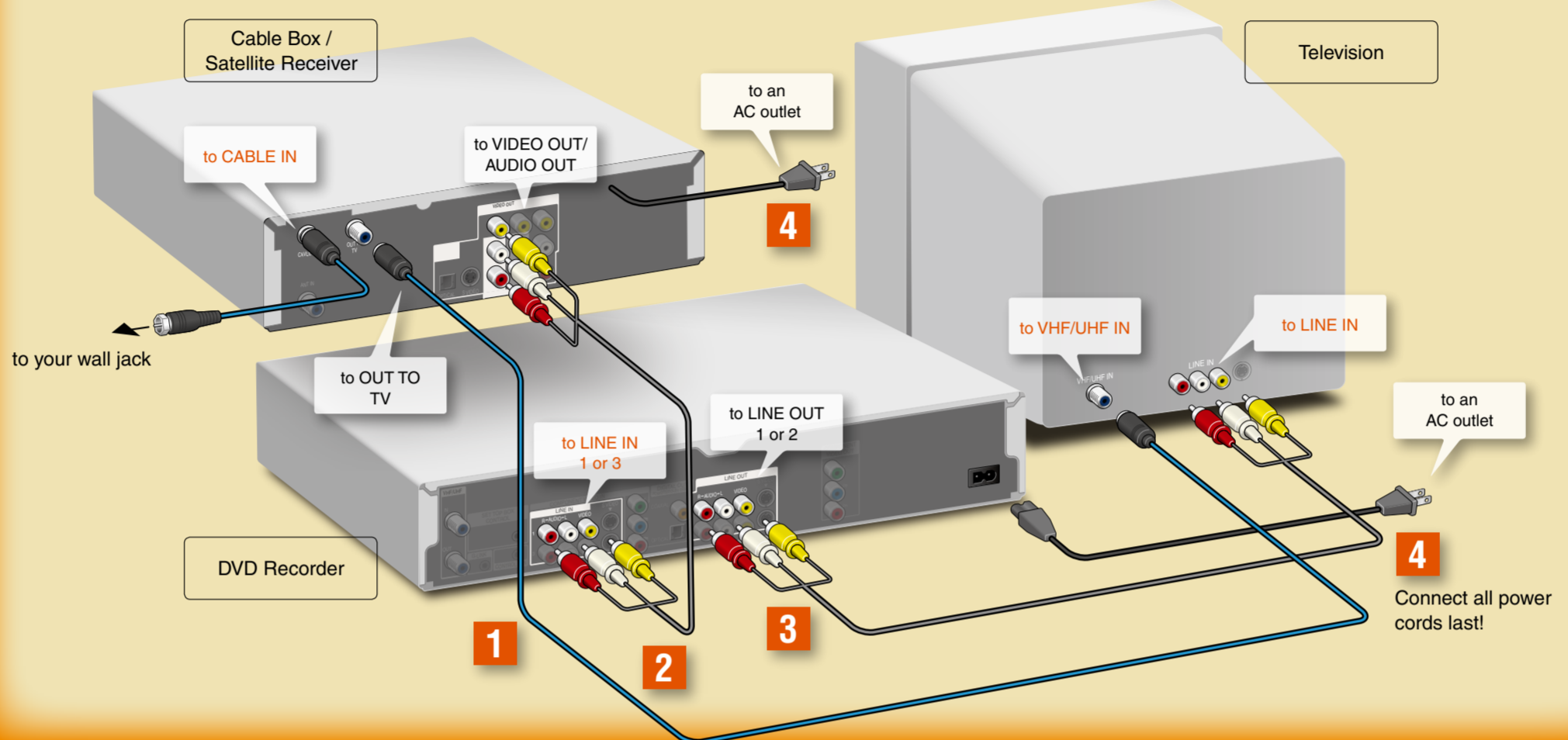
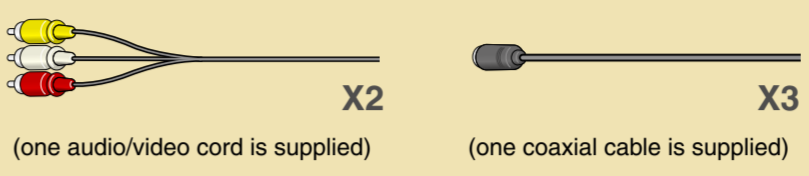
2-187-190-11(1)

# step1 Hookup

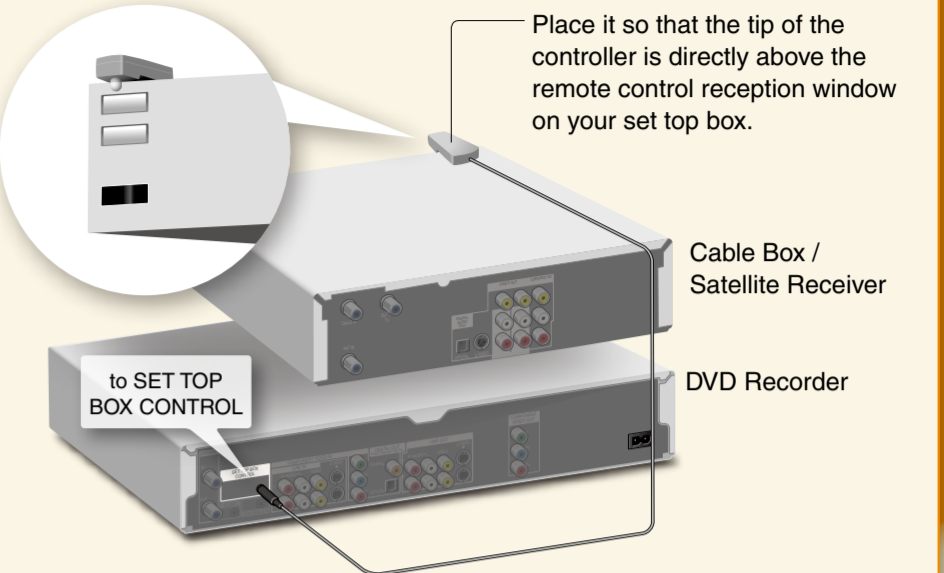
## Basic A

**You have a:**  
Cable Box with Video / Audio Output  
-or-  
Satellite Receiver

**You will need:**

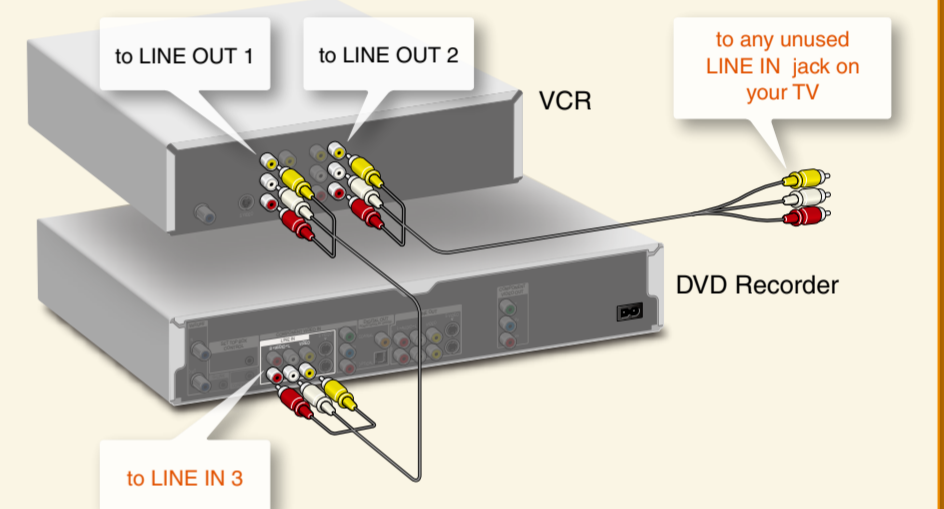


## Connecting the Set Top Box controller



You can have the recorder change the channel of your cable box or satellite receiver to the channel you want to record, just before the timer recording starts. Connect the Set Top Box controller(supplied), and select "Yes" in step 9 of Setup on the next page.

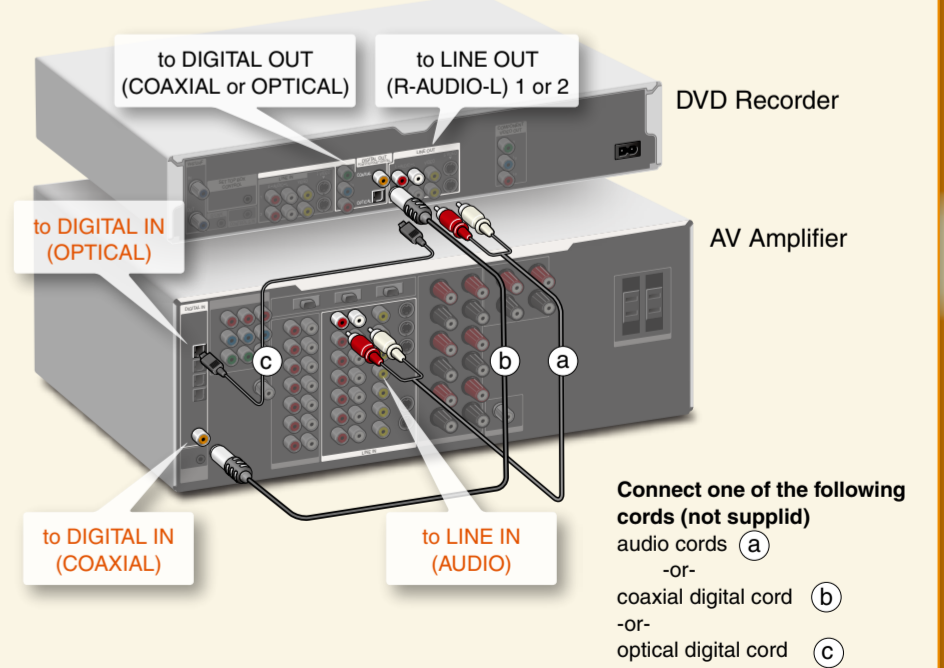
## Connecting a VCR or similar device



To record your video tapes to a DVD, connect an audio/video cable (not supplied) to the LINE OUT 1 jacks on your VCR to the LINE 3 IN jacks on the recorder. To just watch your video tapes, connect your VCR's LINE OUT 2 jacks directly to any unused LINE IN jack on your TV.

**NOTE**  
Do not connect your VCR between this DVD recorder and your TV. If you do not first connect your VCR to the recorder, you will be unable to watch pictures from your recorder.

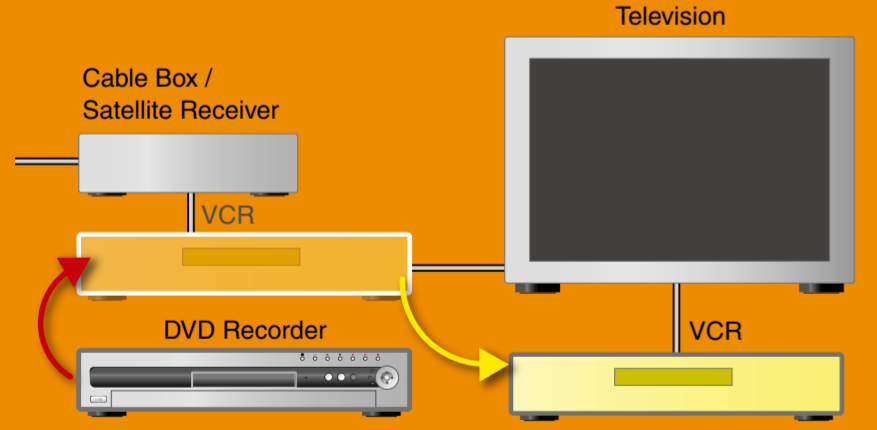
## Connecting an AV amplifier (receiver)



Connecting to an AV amplifier (receiver) with audio cords will enable you to enjoy the TV's surround effects of this recorder, while connecting with digital cords will enable you to listen to Dolby Digital or DTS surround effects. For further explanations, see "Connecting the Audio Cords" in the Operating Instructions.

## Before hookup

**1 Disconnect your VCR**  
If you have been using a VCR, you do not need to disconnect all of your equipment. Just disconnect your VCR and connect the DVD recorder in its place.



If you plan to use your VCR, reconnect it by following the instructions in "Connecting a VCR or similar device" on this page.

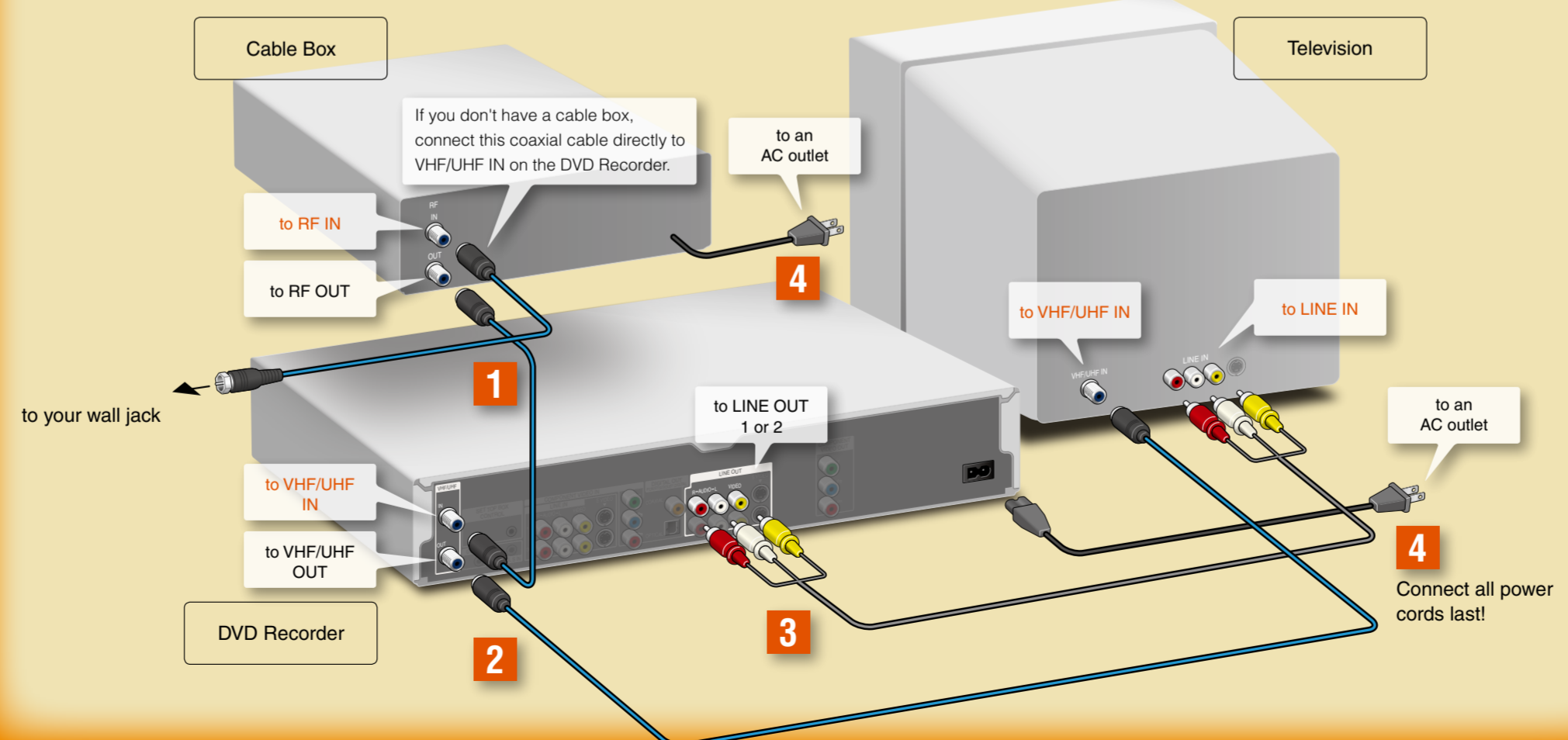
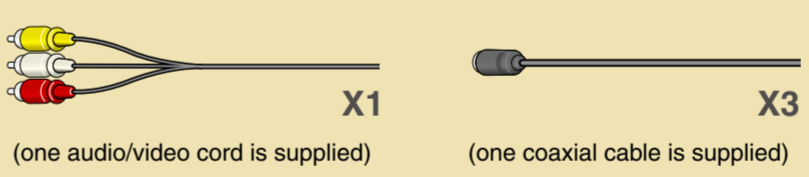
**2 Select a connection**  
Select one of the following two types of basic connections according to the type of equipment you have.

- Basic A**  
Cable Box with Video/Audio Output  
- or -  
Satellite Receiver
  - Basic B**  
Cable (cable box without video/audio output)  
- or -  
Antenna
- Proceed to Step 1 and begin!

## Basic B

**You have a:**  
Cable (cable box without video / audio output)  
-or-  
Antenna

**You will need:**



# step2 Setup

The Easy Setup display automatically appears on your TV screen when you turn on your recorder for the first time. Follow the steps below to make the minimum number of basic adjustments to use the recorder. If you make a mistake, press RETURN ↵.

**1** Turn on your TV and any other connected equipment such as your cable box or satellite receiver.

**2** Press I/O on the remote.

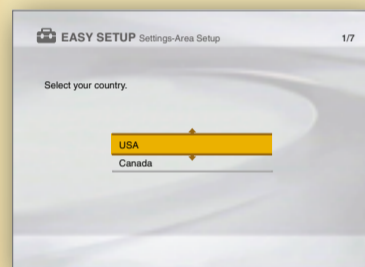
**3** Press the input selector on your TV so that the signal from the recorder appears on your TV screen.



If "Initial settings necessary to operate the DVD recorder will be made. You can change them later using Setup." does not appear on your TV screen, select "Easy Setup" from "SETUP" in the System Menu.

**4** Press the ENTER button.

**5** Press ↑/↓ to select your country, then press ENTER.



**6** Press ←/→/↑/↓ to enter your zip code number, then press ENTER.

**7** Press ↑/↓ to select a language for the on-screen display, then press ENTER.

**8** Press ←/→/↑/↓ to enter the current date and time, and press ENTER. Press ↑/↓ to set the month and press →. Set the day, year, hour, and minutes in the same way.

**9** Press ↑/↓ to select whether or not you want to use the Set Top Box control function, then press ENTER.

**10a** Find the brand code of your cable box or satellite receiver in the "Cable Box/Satellite Receiver Brand Code" list of the Operating Instructions and enter it here. Then press ENTER.

**11a** Press ↑/↓ to select the cable box/ satellite receiver output channel, then press ENTER.

If you connected your cable box or satellite receiver to the DVD recorder's audio/video input, select the "Line" number you connected to. If you connected to the DVD recorder's antenna input, select the "ch (channel)" used to receive the signal from the cable box.

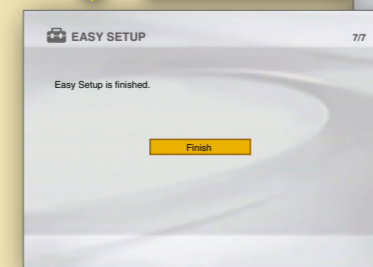
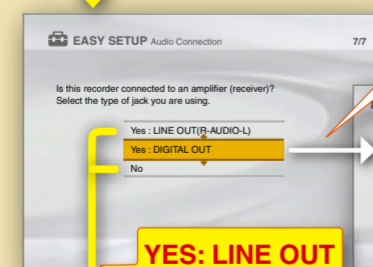
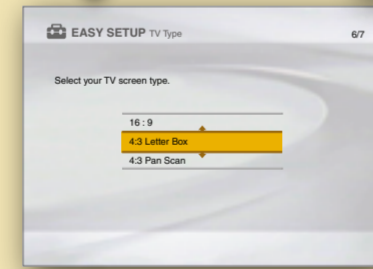
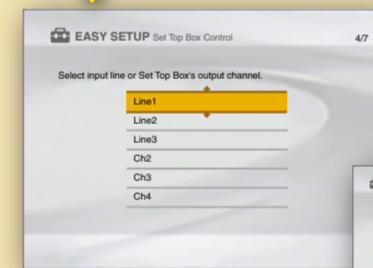
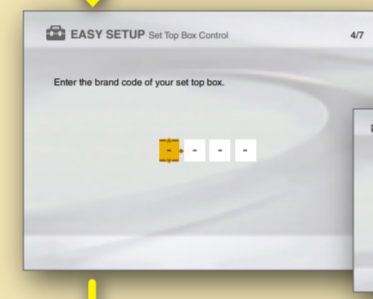
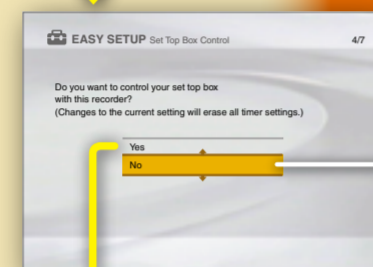
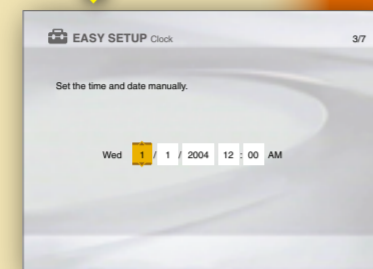
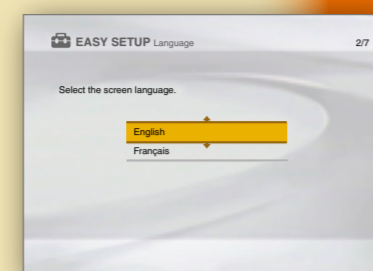
**12** Press ↑/↓ to select the type of TV you have, then press ENTER.

If you have a wide-screen TV, select "16:9." If you have a standard TV, select either "4:3 Letter Box" (shrink to fit) or "4:3 Pan Scan" (stretch to fit). This will determine how "wide-screen" images are displayed on your TV.

**13a** Press ↑/↓ to select whether or not you connected to an AV amplifier(receiver), then press ENTER.

If you did not connect to an AV amplifier (receiver), select "No." If you connected using just an audio cord, select "Yes: LINE OUT (R-AUDIO-L)." If you connected using a digital optical or coaxial cord, select "Yes: DIGITAL OUT."

**14** When "Finish" appears, press ENTER to complete Easy Setup.



## Test your Set Top Box controller

If you connected a Set Top Box controller, do the following:

**1** Point the remote at the recorder (not at the cable box/satellite receiver).

**2** Press CH+/- and confirm that the channel changes on the cable box/ satellite receiver window.

If the recorder does not control your cable box or satellite receiver, see "If you cannot get the recorder to control your cable box/ satellite receiver" at the end of "Step 7: Easy Setup" in the Operating Instructions.

**10b** Press ↑/↓ to select whether or not you have a cable connection, and press ENTER.

If you have cable, select "Cable." If not, select "Antenna."

**11b** The Tuner Preset function starts searching for all receivable channels. This may take a couple of minutes.

**13b** Press ↑/↓ to select the type of signal you want to send to your AV amplifier (receiver), then press ENTER.

If your AV amplifier has a Dolby Digital or DTS decoder, select "Dolby Digital" or "On." If not, select "D-PCM" or "Off."

# step3 Record!



## Insert a Disc

**1** Press OPEN/CLOSE and place a recordable DVD on the disc tray.

**hint**

**Don't know what's going on?** Look at your TV screen, not the front panel display. Messages explaining the current status of the DVD recorder will appear on your TV screen. Note that the remote does not work while "LOAD" is flashing, so be patient!

**2** Press OPEN/CLOSE again to close the disc tray.

"LOAD" will appear for about a minute in the DVD recorder's front panel display. See "Quick Guide to Disc Types" in the Operating Instructions for more details about the differences between disc types.

## Record a TV Program

The following explains how to record a current TV program. For instructions on how to set the timer, see "Timer Recording" in the Operating Instructions.

**1** Press CH+/- to select a channel.

The channel number appears in the front panel display



If you are not using the Set Top Box controller:

- If you connected your cable box or satellite receiver to the Line 1 input of the DVD recorder, press CH+/- until "L1" appears in the front panel display. Then select a channel on your cable box or satellite receiver
- If you connected your cable box to the DVD recorder's antenna input jack, select channel 2, 3 or 4, whichever channel is used to receive the signal from the cable box. Then select a channel on your cable box.

**2** Press REC MODE repeatedly to select the recording mode: HQ, HSP, SP, LP, EP or SLP.

HQ offers the best quality picture, but with the shortest recording time. Recording time increases with each successive mode, but the picture quality gradually deteriorates.

**hint**

**How much disc space do I have?** You can check information about the disc, such as the remaining disc space, by pressing TOOLS while the disc is inserted and selecting "Disc Info" from the displayed TOOLS menu.

**3** Press REC.

The recorder automatically searches for recordable disc space, and starts recording. To stop recording, press REC STOP.

## Play the Recorded TV Program

**1** Press TITLE LIST.

The TITLE LIST menu appears.



**2** Press ↑/↓ to select the title you want to play and press ENTER. The sub-menu appears.



**3** Press ↑/↓ to select "Play" and press ENTER.

Playback starts from the beginning of the title.

**hint**

**What to see a visual list of the recorded titles?** Press the ZOOM +/- buttons to display a thumbnail picture of each title's first scene.



## Remove the Disc

**1** Press OPEN/CLOSE.

"INFO WRITE" flashes in the front panel display for about a minute while an electronic index of the recorded contents is written on the disc.

**2** Remove the disc when the disc tray opens, and press OPEN/CLOSE again to close the disc tray.

**hint**

**Want to play the DVD on the DVD equipment?** To play the disc on other DVD equipment, you may need to finalize the disc. See "Using the 'Disc Info' Screen" in the Operating Instructions.

**Now that you have familiarized yourself with the DVD recorder, try the functions below by following the explanations in the Operating Instructions.**

**Copy a VCR tape to a DVD**  
See "Recording From a VCR or Similar Device"

**Play the beginning of a title while it is being recorded**

See "Chasing Playback/Simultaneous Rec and Play"

