

DAMAGE ASSESSMENT: MANBIJ, ALEPPO GOVERNORATE, SYRIA

Analysis with WorldView-2 Data Acquired 07 September 2016 and 30 September 2010 and WorldView-3 Data Acquired 30 August 2016

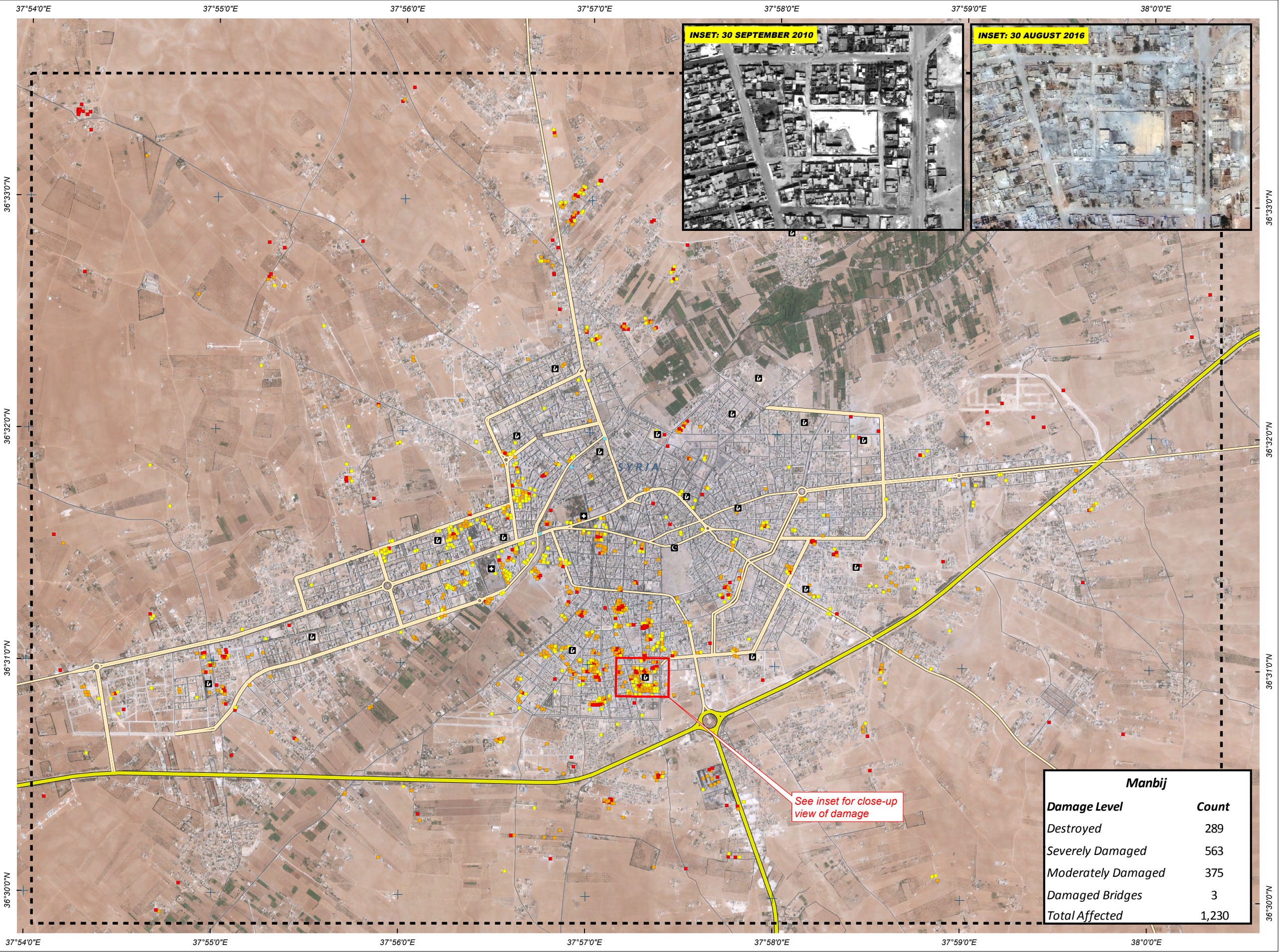
This map illustrates satellite-detected areas of severe and moderate damage to the town of Manbij, Syria. Using WorldView-2 and WorldView-3 satellite imagery acquired 7 September 2016 and 30 August 2016 and 30 September 2010 WorldView-2 imagery as a reference, UNITAR-UNOSAT identified a total of 1,230 potentially damaged structures. Approximately 289 of these were destroyed, 563 severely damaged, 375 moderately damaged. Additionally, a total of 3 damaged bridges were observed. Damage is heaviest in the southern portion of the central area of the town but also quite frequent along the western and northern access roads, and elsewhere. This is a preliminary analysis and has not yet been validated in the field. Please send ground feedback to UNITAR - UNOSAT.

Complex
Emergency

Production Date:
19/09/2016

Version 1.0

Activation Number:
CE20130604SYR



LEGEND

Destroyed

Severe Damage

Moderate Damage

Damaged Bridge

Highway / Primary Road

Secondary Road

Local / Urban Road

Analysis Extent

School

Medical Facility

Mosque

Map Scale for A3: 1:30,000

0

125

250

500

750

1,000

Meters

Satellite Data (1): WorldView-2
Imagery Dates: 07 September 2016
Resolution: 50cm
Copyright: DigitalGlobe
Source: US Department of State, Humanitarian Information Unit, NextView License
Satellite Data (2): WorldView-3
Imagery Date: 30 August 2016
Resolution: 40cm
Copyright: DigitalGlobe
Source: US Department of State, Humanitarian Information Unit, NextView License
Satellite Data (3): WorldView-2, WorldView-1
Imagery Date: 30 September 2010, 21 August 2010
Resolution: 50cm
Copyright: DigitalGlobe
Source: US Department of State, Humanitarian Information Unit, NextView License
Road Data : OSM
Other Data : USGS, UNCS, NASA, NGA
Analysis : UNITAR / UNOSAT
Production : UNITAR / UNOSAT
Analysis conducted with ArcGIS v10.3

Coordinate System: WGS 1984 UTM Zone 37N
Projection: Transverse Mercator
Datum: WGS 1984
Units: Meter

The depiction and use of boundaries, geographic names and related data shown here are not warranted to be error-free nor do they imply official endorsement or acceptance by the United Nations. UNOSAT is a program of the United Nations Institute for Training and Research (UNITAR), providing satellite imagery and related geographic information, research and analysis to UN humanitarian and development agencies and their implementing partners.

This work by UNITAR/UNOSAT is licensed under a Creative Commons Attribution-NonCommercial-ShareAlike 3.0 Unported License.

United Nations Institute for Training and Research

Contact Information: unosat@unitar.org
24/7 Hotline: +41 75 411 4998
www.unitar.org/unosat

Manbij	
Damage Level	Count
Destroyed	289
Severely Damaged	563
Moderately Damaged	375
Damaged Bridges	3
Total Affected	1,230