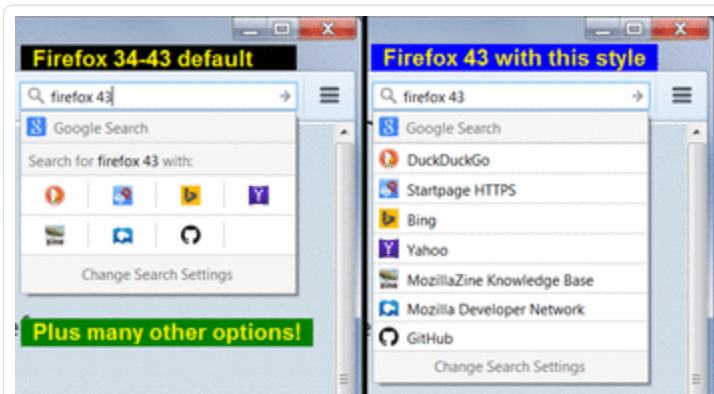


userstyles.org - Firefox Search Bar Show Engine Names (Firefox 43)



More screenshots: [Vertical spacing options - difference](#), [Turn optional sections of the panel on and off](#), [Overlay default search engine name on search bar](#)

If you have multiple search engine plugins for the same site, having only an icon may be annoying. This style shows a more classic list-style display. Developed and tested on Firefox 43.

To try different options *after* you install the style, reload the page until you get a green Update button, then you can choose a different option and update to it.

- Vertical spacing above and below icons
 - Standard 4 pixel whitespace
 - Narrow 2 pixel whitespace
 - Tight 1 pixel whitespace
- Hide the "Search for..." line above the non-default search engines?
 - Yes, hide it
 - No, show it
- Hide the "Add ..." line for a site's own search engine?
 - No, show it
 - Yes, hide it
- Hide the "Change Search Settings" line at the bottom?
 - No, show it
 - Yes, hide it
- Show "Search using ..." tooltip text in or above the search box?
 - No thanks
 - Yes, in the bar
 - Yes, above the bar

+ Update with Stylish

Advertisement

Author	Jefferson	Installs (this week)	45
License		Installs (total)	45
Created	Dec 22, 2015	Average rating	
Updated	Dec 25, 2015	Show CSS	

[Edit](#) [Delete](#) [Stats](#)

Notes

Change Log:

2015-12-21 Initial version (+ minor modification to shorten row heights)
2015-12-24 Tweak sizes and positions, added install-time options for hiding various parts
2015-12-24 Added option for search box tooltip (e.g., Search using DuckDuckGo)
2015-12-25 Tweaked Search Bar tooltips to avoid overflowing the available space

Feedback



Discussions

[Ask a new question or add a review for this style.](#)

[Very nice fix for the "new Search Bar" in Firefox 34 and later - IMO necessary for Firefox 43-plus](#) by [the-edmeister](#), December 25, 2015



[Advanced](#)

[Browse](#)

[My account](#)

[Help](#)

[Forum](#)

Related Themes

[URL Bar Dropmarker Double-wide](#)

[Shrink New Tab Thumbnails - Firefox](#)

[Bookmarks Menu in Multiple Columns](#)

More [Browser themes](#)

Advertisement

[Contact the admin.](#)

userstyles.org - Editing Firefox Search Bar Show Engine Names (Firefox 43)

- Read [tips on making user styles](#).
- To specify which URLs will have the style applied, use [the Mozilla @-moz-document format](#). If you're using Chrome, you can use the "To Mozilla Format" button to generate the code.
- Styles for sites with adult content are not allowed.
- Styles adding adult content to sites are not allowed.
- Do not post other people's content without their permission.
- If you decide to stop maintaining your style, please [delete it](#) rather than blanking it out. By deleting, you can make it so your style doesn't come up in searches while still being accessible via direct access for your current users.

Name

Firefox Search Bar Show Engine Names (Firefox 43)

Description - *A brief (3-4 sentences) description of the style. [Some HTML allowed.](#)*

If you have multiple search engine plugins for the same site, having only an icon may be annoying. This style shows a more classic list-style display. Developed and tested on Firefox 43.

To try different options <i>after</i> you install the style, reload the page until you get a green Update button, then you can choose a different option and update to it.

Additional Info (Optional) - *Release notes, versioning info, change log, instructions, credits, etc. [Some HTML allowed.](#)*

Change Log:

2015-12-21 Initial version (+ minor modification to shorten row heights)
 2015-12-24 Tweak sizes and positions, added install-time options for hiding various parts
 2015-12-24 Added option for search box tooltip (e.g., Search using DuckDuckGo)
 2015-12-25 Tweaked Search Bar tooltips to avoid overflowing the available space

CSS *Enable source editor*

```
@namespace url(http://www.mozilla.org/keymaster/gatekeeper/there.is.only.xul);
/*
HELLO! This script has optional settings that you can try out if you return to its page:
https://userstyles.org/styles/122214/firefox-search-bar-show-engine-names-firefox-43
*/
/* Make the one-off buttons span the full width */
.searchbar-engine-one-off-item[tooltiptext] {
  width: 100% !important;
  height: 24px !important;
  background-image: none !important;
  padding-left: 6px !important;
  box-sizing: content-box !important;
}
/* Hide the empties */
.searchbar-engine-one-off-item:not([tooltiptext]) {
  display: none !important;
}
```

```

/* Fix up borders */
.searchbar-engine-one-off-item[tooltipstext], .addengine-item {
  border-bottom: 1px solid #ccc !important;
}
.search-setting-button.search-panel-header, .addengine-item,
.search-panel-header.search-panel-current-input {
  border-top: none !important;
  max-height: 26px !important;
  min-height: 16px !important;
  padding-top: 1px !important;
}
/* Insert descriptive name for search engine plugin */
.searchbar-engine-one-off-item[tooltipstext]::after {
  content: attr(tooltipstext);
  margin: 12px 6px 0px !important;
  display: block !important;
}
/* Fix icon positioning */
.searchbar-engine-one-off-item[tooltipstext] > .button-box {
  display: inline-flex !important;
  width: 16px !important;
  max-width: 16px !important;
}
.searchbar-engine-one-off-item[tooltipstext] > .button-box > .button-icon {
  margin-top: 4px !important;
  margin-left: -1px !important;
}
/* User style options */
/*[[vertspace]]*/
/*[[searchfor]]*/
/*[[addengine]]*/
/*[[chgsettings]]*/
/*[[tooltipstext]]*/

```

Example URL (Optional) *Provide a URL that is affected by this style*

Style Settings (Optional) [Need help with style settings?](#)

- ↓

×

Vertical spacing above and below icons

vertspace

- ↓

×

Standard 4 pixel whitespace

std

 Default

```

/* Standard spacing (built-in above) */

```

- ↑

↓

×

Narrow 2 pixel whitespace

narrow

 Default

```

/* Narrow spacing */
.searchbar-engine-one-off-item[tooltipstext] {
  height: 20px !important;
}
.searchbar-engine-one-off-item[tooltipstext]::after {
  margin-top: 10px !important;
}
.searchbar-engine-one-off-item[tooltipstext] > .button-box > .button-icon {
  margin-top: 2px !important;
}

```

```

}
.search-panel-header.search-panel-current-input,
.search-panel-header.search-panel-current-engine {
  padding: 0 6px !important;
  max-height: 20px !important;
}

```



Tight 1 pixel whitespace **tight** Default

```

/* Tight spacing */
.searchbar-engine-one-off-item[tooltiptext] {
  height: 18px !important;
}
.searchbar-engine-one-off-item[tooltiptext]::after {
  margin-top: 9px !important;
}
.searchbar-engine-one-off-item[tooltiptext] > .button-box > .button-icon {
  margin-top: 1px !important;
}
.search-panel-header.search-panel-current-input,
.search-panel-header.search-panel-current-engine,
.search-setting-button.search-panel-header,
.search-setting-button.search-panel-header > .button-box {
  padding: 0 6px !important;
  max-height: 18px !important;
}

```

o Add Option



Hide the "Search for..." line above the non-default search engines?



Yes, hide it **hidesearchfor** Default

```

.search-panel-header.search-panel-current-input {
  display: none !important;
}

```



No, show it **showsearchfor** Default

```

/* Not hiding "Search for ..." */

```

o Add Option



Hide the "Add ..." line for a site's own search engine?



No, show it **showengine** Default

```

/* Not hiding "Add ..." engine */

```



Yes, hide it **hideengine** Default

```
#PopupSearchAutoComplete .addengine-item {
  display: none !important;
}
```

○ Add Option

↑ ↓ ✕

Hide the "Change Search Settings" line at the bottom? **chgsettings**

○ ↓

No, show it **showchg** Default

```
/* Not hiding "Change Search Settings" */
```

○ ↑

Yes, hide it **hidechg** Default

```
.search-setting-button.search-panel-header {
  display: none !important;
}
```

○ Add Option

↑ ✕

Show "Search using ..." tooltip text in or above the search box? **tooltiptext**

○ ↓ ✕

No thanks **ttno** Default

```
/* Search bar tooltip text only visible on mouseover */
```

○ ↑ ↓ ✕

Yes, in the bar **ttinbar** Default

```
/* Overlay search bar tooltip text in the search bar */
#searchbar {
  position: relative !important;
}
.searchbar-textbox[tooltiptext]:not(:hover):not([focused]):after {
  content: attr(tooltiptext);
  font-style: italic;
  color: #888;
  background-color: inherit;
  display: inline-block;
  padding-left: 4px;
  position: absolute;
  bottom: 3px;
  right: 8px;
  z-index: 1000;
  white-space: pre;
  direction: rtl;
  max-width: calc(100% - 40px);
  overflow-x: hidden;
}
```

}

Yes, above the bar ttabove Default

```

/* Overlay search bar tooltip text above the search bar */
#searchbar {
  position: relative !important;
}
.searchbar-textbox[tooltiptext]:not([focused]):after {
  content: attr(tooltiptext);
  font-style: italic;
  font-size: 11px;
  color: #888;
  background-color: transparent;
  display: inline-block;
  position: absolute;
  top: 0;
  margin-top: -12px;
  right: 3px;
  z-index: 1000;
  white-space: pre;
  direction: rtl;
  max-width: calc(100% - 6px);
  overflow-x: hidden;
  text-overflow: ellipsis;
}

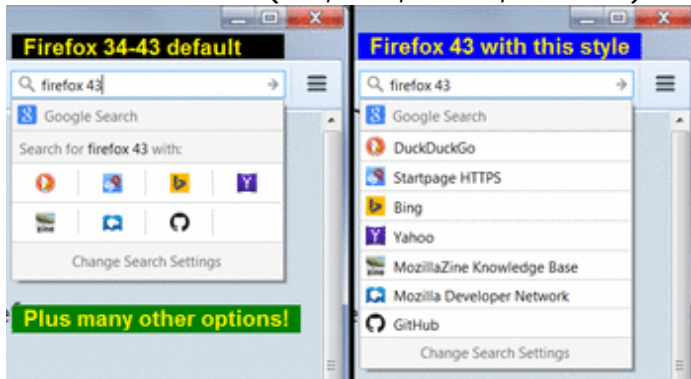
```

Add Option

-

Primary Screenshot This screenshot will be displayed on your style page and in search results. It should clearly represent what the site or app looks like with your style applied. [More info on screenshots.](#)

- Automatically generate screenshot (Automatic screenshot not yet taken.)
- Use this screenshot (GIF, PNG, or JPG, < 200KB):



Remove

Change:

- No screenshots

Additional Screenshots (Optional) Other screenshots to demonstrate what your style does.

Description	Upload	Remove	Current Image
-------------	--------	--------	---------------

Description	Upload	Remove	Current Image
Vertical spacing options - difference	Browse...	<input type="checkbox"/>	122214 additional 18009
Turn optional sections of the panel on and off	Browse...	<input type="checkbox"/>	122214 additional 18010
Overlay default search engine name on search bar	Browse...	<input type="checkbox"/>	122214 additional 18011
	Browse...		
	Browse...		

[Pledge](#) Campaign ID (Optional)

License

By posting styles to userstyles.org, you are at minimum allowing people to use your styles for personal use. You may be more specific in what you allow by choosing a license. This setting defines the license for this style; you may also define a default license for all your styles on [your user page](#). You can use the [Creative Commons License Chooser](#) to help you pick a Creative Commons license. Be sure you understand the licenses before you choose them as they may not be revokable.

- Use my default (currently CC BY - Creative Commons Attribution)
- [CC0 - Public Domain](#)
- [CC BY - Creative Commons Attribution](#)
- [CC BY-SA - Creative Commons Attribution-ShareAlike](#)
- [CC BY-ND - Creative Commons Attribution-NoDerivs](#)
- [CC BY-NC - Creative Commons Attribution-NonCommercial](#)
- [CC BY-NC-SA - Creative Commons Attribution-NonCommercial-ShareAlike](#)
- [CC BY-NC-ND - Creative Commons Attribution-NonCommercial-NoDerivs](#)
- No Redistribution

[Save](#)

[→](#)

[Advanced](#)

[Browse](#)

[My account](#)

[Help](#)

[Forum](#)

Advertisement

[Contact the admin.](#)