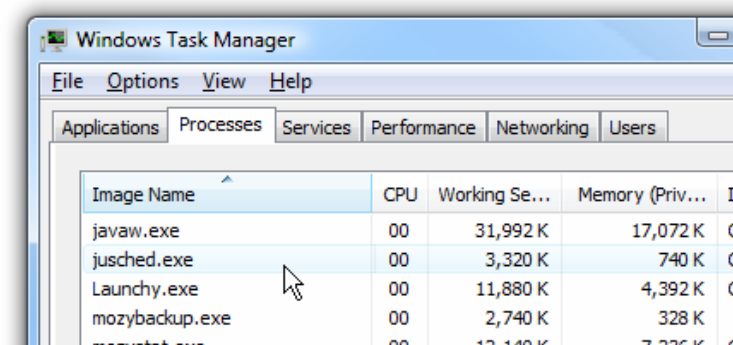


What is jused.exe?

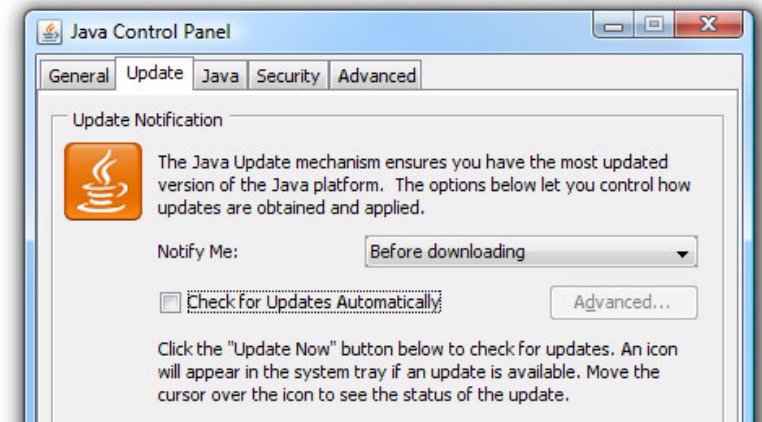
This process is the Java Update Scheduler, which is a process that checks once a month whether there are new updates to Java, and uses a lot of memory. It is not doing critical updates considering it only checks once a month.

To get rid of it or shut it off you'll need to go to the Control Panel.

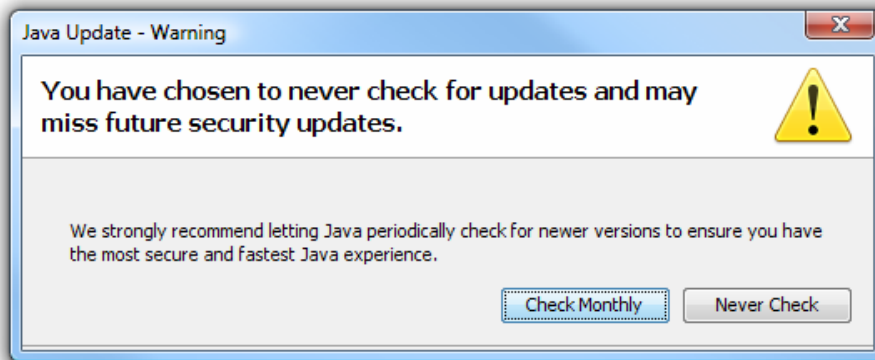
Go to Start, highlight & click on Control Panel, and then click on the Java icon (for XP); in Vista click on Additional Options, and then click on Java.



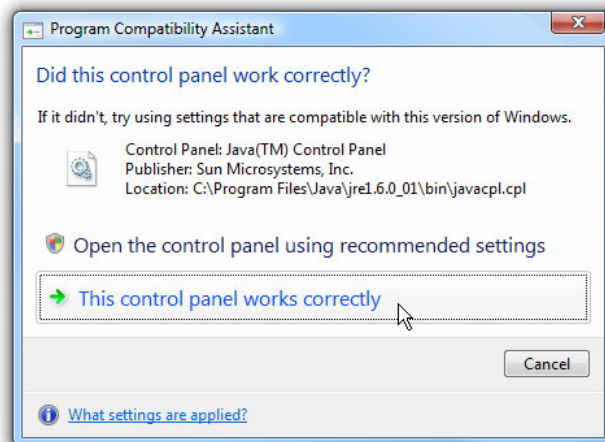
This should open the Java Control Panel. Click the Update tab; look for "Check for Updates Automatically" and uncheck the box.



You'll receive a warning message, which you do NOT need to worry about~
click "Never Check".

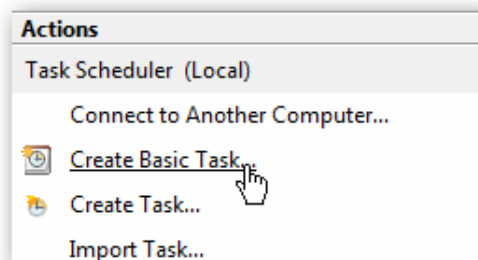


The next box that will pop up is another error message, click
"This control panel works correctly".

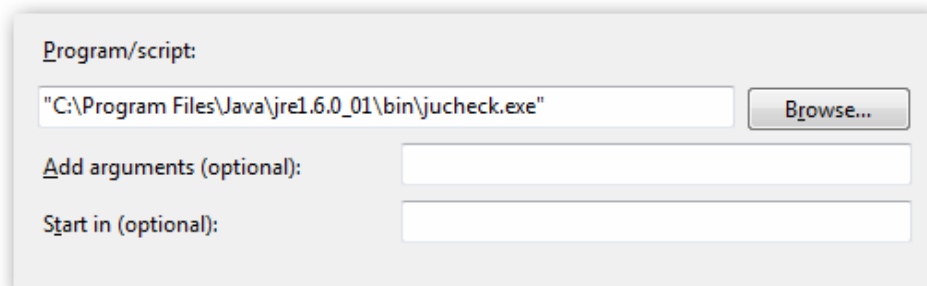


If you would like the updates, use the Task Scheduler to schedule Java Update Check:

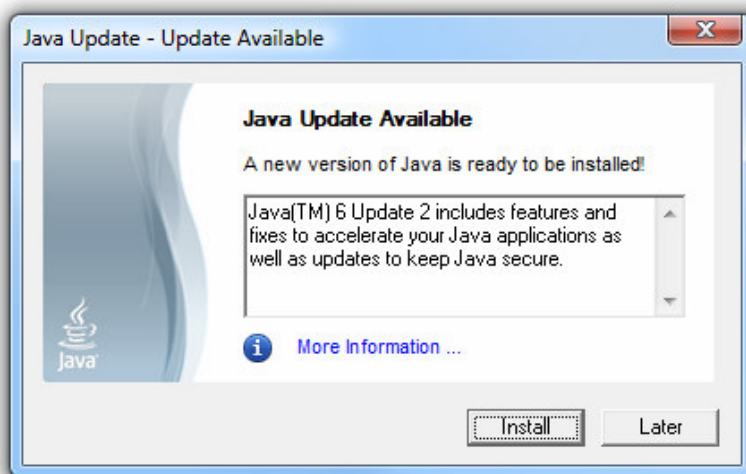
Go to Start, highlight & click on Search, and when the window pops up, type in *Task Scheduler*. This opens another window, click on Create Basic Task.



The scheduler's wizard will pop up; follow the step-by-step directions to pick a month and date. When the "Start a Program" screen appears, in the box labeled "Program/script" type in "C:\Program Files\Java\jre1.6.0_01\bin\jucheck.exe" This ensures that the jucheck.exe is running in the Java directory.



Every month the Scheduler will run and a pop-up window will appear letting you know if there is a new version or updates needed.



Resources/References

This white paper was adapted from "The Geek" at the How-To-Geek, Computer Help from Friendly How-To-Geek's website informational section. You may visit that website by clicking on the link below:

<http://www.howtogeek.com/howto/windows-vista/what-is-juschedexe-and-why-is-it-running/>



Maui Tech Girl