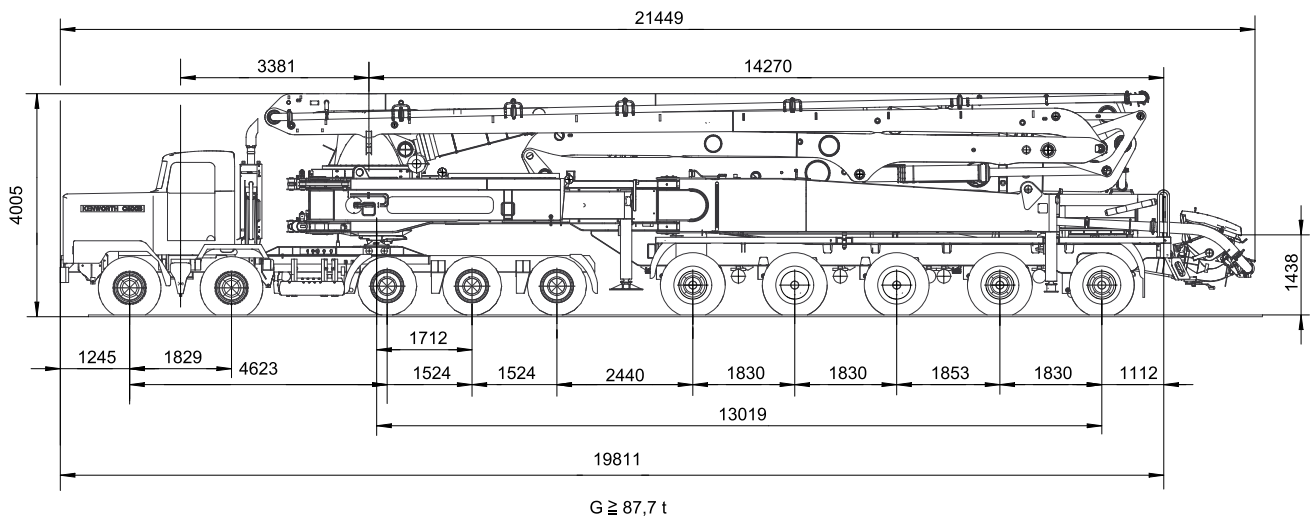


# Truck-mounted concrete pump

# BSS 70-5.16 H .16 H LS .20 H

Output up to 200 m<sup>3</sup>/h  
Delivery pressure up to 130 bar



## Technical Data

Boom M 70 - 5		
Reach height	m	69,3
Horiz.Reach	brutto	m 65,1
	netto	m 59,6
Reach depth. max.	m	51,4
Unfolding height	m	24,5
Endhose length	m	3
Number of arms		5
Folding system	Roll Z-Faltung (RZ)	
Delivery line	DN 117/5,5 Proline 67 HRC	

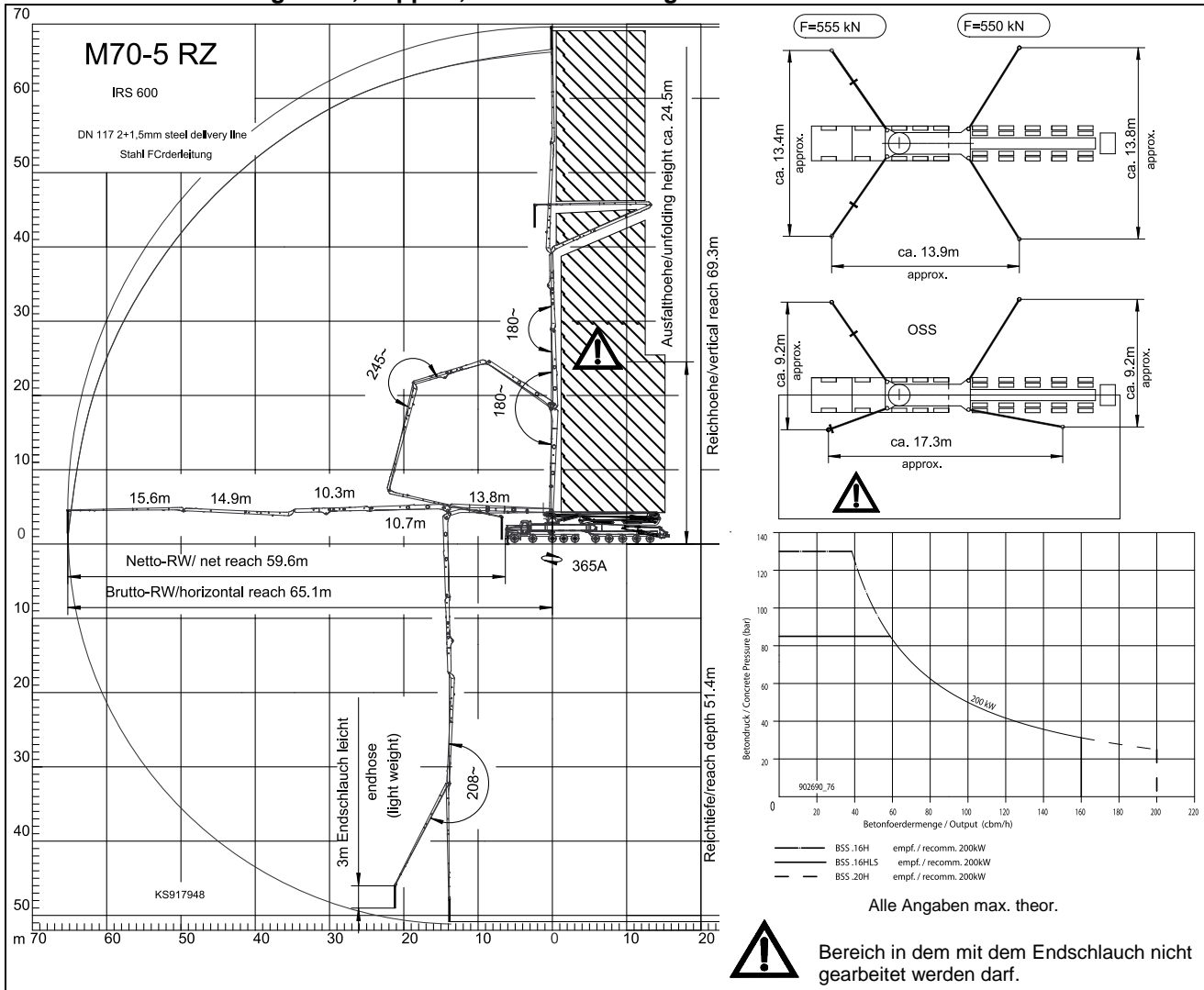
Deliveryline boom max. 85 bar.  
All data maximum theoretical.

Pump	BSF	.16 H	.16 H LS	.20 H
Output	m <sup>3</sup> /h	160/108*	160	200
Delivery pressure	bar	85/130*	85	85
Strokes	1/min.	31/21*	26	26
Delivery cyl.	∅ mm	230	250	280
Stroke	mm	2100	2100	2100

\* rod side / piston side. Max. output and max. concrete pressure cannot be operated simultaneously.

Engine data	
Tractor	Kenworth C500B, 370 kW (500 HP)
Slaveengine	Deutz TCD2015V6, 330 kW (450 HP)

## Reach Information diagram, Support, Performance diagram



### Delivery scope - Standard

- EPS / EOC (Ergonic Pump System / Output Control)
- EBC (Ergonic Boom Control) 5 arms
- EGD (Ergonic Graphic Display in control box)
- Remote control with EGD-RC (Ergonic Graphic Display on remote control)
- OSS (One Side Support)
- display for the independent power unit
- Agitator control by radio remote control
- central lubrication boom electrically
- central lubrication hopper, electrically
- concrete line DN 117, 5,5" PM 2015 twin layer
- connections for hydraulic emergency supply
- diagnose interface, central for electric and hydraulic
- diesel tank in supp. leg rear right side
- water tank in supp. leg rear left side
- flashlights for 4 support legs front and rear
- flushing water pump 160 l/min 25 bar
- hard metal wear parts kit
- spotlights 4x for illumination support area
- timber wood 16x1000
- Teleservice
- Vibrator, electrical
- and much more

Please see quotation for exact serial delivery scope